

Introduction

Purpose

This document provides instructions for installing the Weatherproofing Kit M07933K001 and sealing the Electronics Cabinet on Atlas™ 9800 dispensers and pumping units.

Table of Contents

Topic	Page
Introduction	1
Important Safety Information	3
Installation of the Weatherproofing Kit	5

Required Tools

Figure 1: Tools



The following tools are required for the installation of the kit:

- Phillips® screwdriver
- 3/16" Allen Wrench
- Ratchet and 1/2" Socket
- Roll Pin Punch
- Hammer
- Dry rags
- Cleaning solution or isopropyl alcohol
- Loctite (light or medium strength)
- Petroleum jelly or Silicone lubricant

Parts List

The following table lists the parts included in the M07933K001 kit.

Item	Description	Part Number	Quantity
1	New Bezels	M05291A00X (Configured based on Unit Serial Number)	2
2	Tube 3M™ 2084 Sealant	END 1456	1
3	Gasket Strip	027078	5 feet
4	TopKAT™ Base Gaskets	M07800B001	2

Related Documents

Document Number	Title	GOLD Library
MDE-4334	Atlas Start-up/Service Manual	Gasboy Atlas Pumps/Dispensers
MDE-4363	Atlas Owner's Manual	Gasboy Atlas Pumps/Dispensers

Warranty

For information on warranty, refer to MDE-4255 Gasboy®'s Warranty Policy Statement. If you have any warranty-related questions, contact Gasboy's Warranty Department at its Greensboro location.

Important Safety Information

This section introduces the hazards and safety precautions associated with installing, inspecting, maintaining or servicing this product. Before performing any task on this product, read this safety information and the applicable sections in this manual, where additional hazards and safety precautions for your task will be found. Fire, explosion, electrical shock or pressure release could occur and cause death or serious injury if these safe service procedures are not followed.

Preliminary Precautions


You are working in a potentially dangerous environment of flammable fuels, vapors, and high voltage or pressures. Only trained or authorized individuals knowledgeable in the related procedures should install, inspect, maintain or service this equipment.




Emergency Total Electrical Shut-Off

The first and most important information you must know is how to stop all fuel flow to the pump and island. Locate the switch or circuit breakers that shut-off all power to all fueling equipment, dispensing devices, and submerged turbine pumps (STPs).

⚠ WARNING

 The EMERGENCY STOP, ALL STOP, and PUMP STOP buttons at the cashier's station WILL NOT shut off electrical power to the pump/dispenser.

 This means that even if you activate these stops, fuel may continue to flow uncontrolled.

You must use the TOTAL ELECTRICAL SHUT-OFF in the case of an emergency and not only these cashier station "stops."

Total Electrical Shut-Off Before Access

Any procedure requiring access to electrical components or the electronics of the dispenser requires total electrical shut-off of that unit. Know the function and location of this switch or circuit breaker before inspecting, installing, maintaining, or servicing Gasboy equipment.

Evacuation, Barricading and Shut-Off

Any procedures requiring accessing the pump/dispenser or STPs requires the following three actions:



- An evacuation of all unauthorized persons and vehicles using safety tape, cones or barricades to the effected units
- A total electrical shut-off of that unit

Read the Manual

Read, understand and follow this manual and any other labels or related materials supplied with this equipment. If you do not understand a procedure, call a Gasboy Authorized Service Contractor or call the Gasboy Service Center at 1-800-444-5529. It is imperative to your safety and the safety of others to understand the procedures before beginning work.

Follow the Regulations

There is applicable information in NFPA 30A; *Automotive and Marine Service Code*, NFPA 70; *National Electrical Code (NEC)*, OSHA regulations and federal, state, and local codes which must be followed. Failure to install, inspect, maintain or service this equipment in accordance with these codes, regulations and standards may lead to legal citations with penalties or affect the safe use and operation of the equipment.

Replacement Parts

Use only genuine Gasboy replacement parts and retrofit kits on your pump/dispenser. Using parts other than genuine Gasboy replacement parts could create a safety hazard and violate local regulations.

Safety Symbols and Warning Words

This section provides important information about warning symbols and boxes.

Alert Symbol



This safety alert symbol is used in this manual and on warning labels to alert you to a precaution which must be followed to prevent potential personal safety hazards. Obey safety directives that follow this symbol to avoid possible injury or death.

Signal Words

These signal words used in this manual and on warning labels tell you the seriousness of particular safety hazards. The precautions that follow must be followed to prevent death, injury or damage to the equipment



DANGER - This signal word is used to alert you to a hazard to unsafe practice which will result in death or serious injury



WARNING - This alerts you to a hazard or unsafe practice that could result in death or serious injury.



CAUTION with Alert symbol - This signal word designates a hazard or unsafe practice which may result in minor injury.

CAUTION without Alert symbol - When used by itself, CAUTION designates a hazard or unsafe practice which may result in property or equipment damage.

Working With Fuels and Electrical Energy

Prevent Explosions and Fires

Fuels and their vapors will become explosive if ignited. Spilled or leaking fuels cause vapors. Even filling customer tanks will cause explosive vapors in the vicinity of dispenser or island.

Important Safety Information

No Open Flames



Open flames from matches, lighters, welding torches or other sources can ignite fuels and their vapors.



No Sparks - No Smoking

Sparks from starting vehicles, starting or using power tools, burning cigarettes, cigars or pipes can also ignite fuels and their vapors. Static electricity, including an electrostatic charge on your body, can cause a spark sufficient to ignite fuels and their vapors. After getting out of a vehicle, touch the metal of your vehicle to discharge any electrostatic charge before you approach the dispenser island.

Working Alone

It is highly recommended that someone who is capable of rendering first aid be present during servicing. Be familiar with Cardiopulmonary Resuscitation (CPR) methods if you are working with or around high voltages. This information is available from the American Red Cross. Always advise the station personnel about where you will be working, and caution them not to activate power while you are working on the equipment. Use the OSHA tag out and lock out procedures. If you are not familiar with this requirement, refer to information in the service manual and OSHA documentation.

Working With Electricity Safely

Ensure to use safe and established practices in working with electrical devices. Poorly wired devices may cause a fire, explosion or electrical shock. Ensure grounding connections are properly made. Ensure that sealing devices and compounds are in place. Ensure not to pinch wires when replacing covers. Follow OSHA Lock-Out and Tag-Out requirements. Station employees and service contractors need to understand and comply with this program completely to ensure safety while the equipment is down.

Hazardous Materials

Some materials present inside electronic enclosures may present a health hazard if not handled correctly. Ensure to clean hands after handling equipment. Do not place any equipment in mouth.

WARNING

This area contains a chemical known to the State of California to cause cancer.

WARNING

This area contains a chemical known to the State of California to cause birth defects or other reproductive harm.

IMPORTANT: Oxygen may be needed at scene if gasoline has been ingested or inhaled. Seek medical advice immediately.

Emergency First Aid

Informing Emergency Personnel

- Compile the following information for emergency personnel:
- Location of accident (for example, address, front/back of building, and so on).
- Nature of accident (for example, possible heart attack, run over by car, burns, and so on).
- Age of victim (for example, baby, teenager, middle-age, elderly).
- Whether or not victim has received first aid (for example, stopped bleeding by pressure, and so on).
- Whether or not a victim has vomited (for example, if swallowed or inhaled something, and so on).

WARNING



Gasoline ingested may cause unconsciousness and burns to internal organs.
Do not induce vomiting.
Keep airway open.
Oxygen may be needed at scene.
Seek medical advice immediately.

WARNING



Gasoline inhaled may cause unconsciousness and burns to lips, mouth and lungs.
Keep airway open.
Seek medical advice immediately.

WARNING



Gasoline spilled in eyes may cause burns to eye tissue.
Irrigate eyes with water for approximately 15 minutes.
Seek medical advice immediately

WARNING



Gasoline spilled on skin may cause burns.
Wash area thoroughly with clear/water.
Seek medical advice immediately.

IMPORTANT: Oxygen may be needed at scene if gasoline has been ingested or inhaled. Seek medical advice immediately.

Lockout/Tagout

Lockout/Tagout covers servicing and maintenance of machines and equipment in which the unexpected energization or start up of the machine(s) or equipment or release of stored energy could cause injury to employees or personnel. Lockout/Tagout applies to all mechanical, hydraulic, chemical or other energy, but does not cover electrical hazards. Reference Subpart S of 29 CFR Part 1910 - Electrical Hazards, 29 CFR Part 1910.333 contains specific Lockout/Tagout provision for electrical hazards.

Installation of the Weatherproofing Kit

To install the Weatherproofing kit for 9800K Series pumps, proceed as follows:

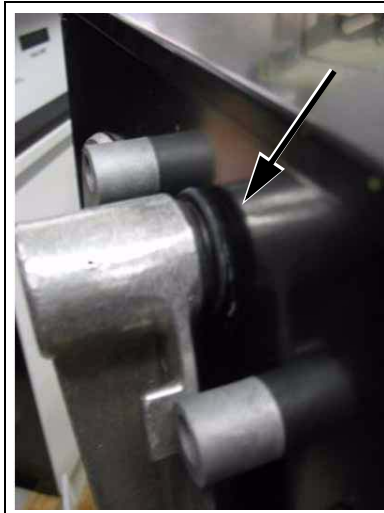
- 1 Reinstall the grommet that seals the area around the reset shaft.
- 2 Apply the sealant to the corner locations inside the Electronics Cabinet.
- 3 Apply the Gasket Strip to the outside of the Rain Gutter.
- 4 Install the new bezels.
Note: If the unit has a TopKAT mounted on it, perform step 5.
- 5 Install the gaskets between the TopKAT and its base and also between the TopKAT base and the dispenser unit.

Removal and Reinstallation of the Reset Grommet

To remove and reinstall the Reset Grommet, proceed as follows:

- 1 Locate the round Reset Grommet at the Reset shaft. See [Figure 2](#).
- 2 Remove the front bezel from both sides of the unit.

Figure 2: Round Reset Grommet



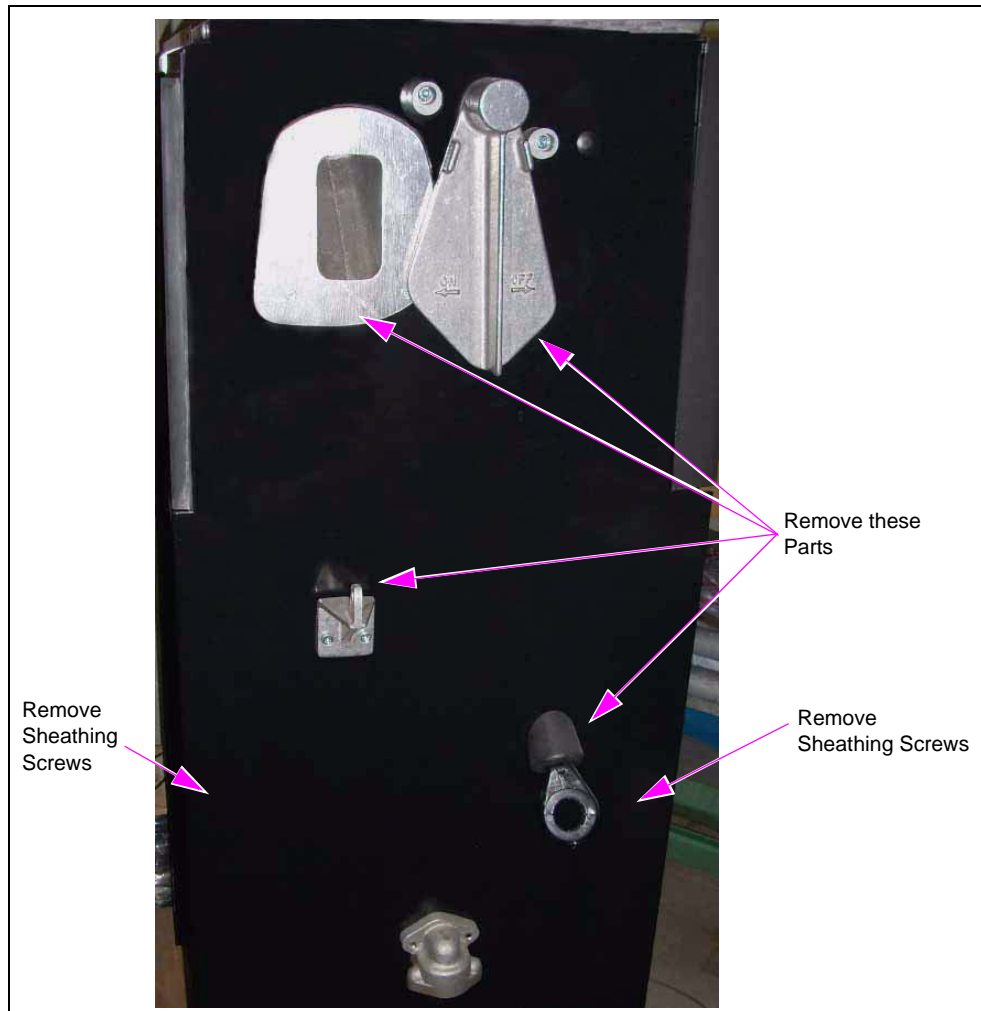
- 3 Remove the four screws holding the top sheathing in place. Do not remove the top sheathing.
- 4 Remove the Reset Handle by driving out the Roll Pin. See [Figure 3 on page 6](#).

Figure 3: Removal of the Reset Handle



- 5 Remove the Nozzle Boot, Reset Handle Stops, and small black plastic plug. See [Figure 4](#).

Figure 4: Nozzle Boot, Reset Handle Stops, and Small Black Plastic Plug



- 6 Remove the side sheathing screws (located inside the frame).

- 7 Remove the Hose Retriever or Blanking Plate by removing the two nuts inside the frame.
- 8 Remove the grommet (lubricate the Reset Shaft, if necessary).
- 9 Raise the top sheathing up slightly and pull the side sheathing away from the frame.
Note: Ensure that you do not bend the side sheathing.
- 10 Hold the side sheathing away from the frame to reinstall the grommet between the side sheathing and frame (apply a small amount of lubricant for easy installation of the grommet over the shaft). Place the larger diameter of the grommet against the frame. See [Figure 5](#).

Figure 5: Installation of the Grommet Over the Shaft



- 11 Carefully relax the side sheathing and fit it over the Reset Shaft and grommet. See [Figure 6](#).

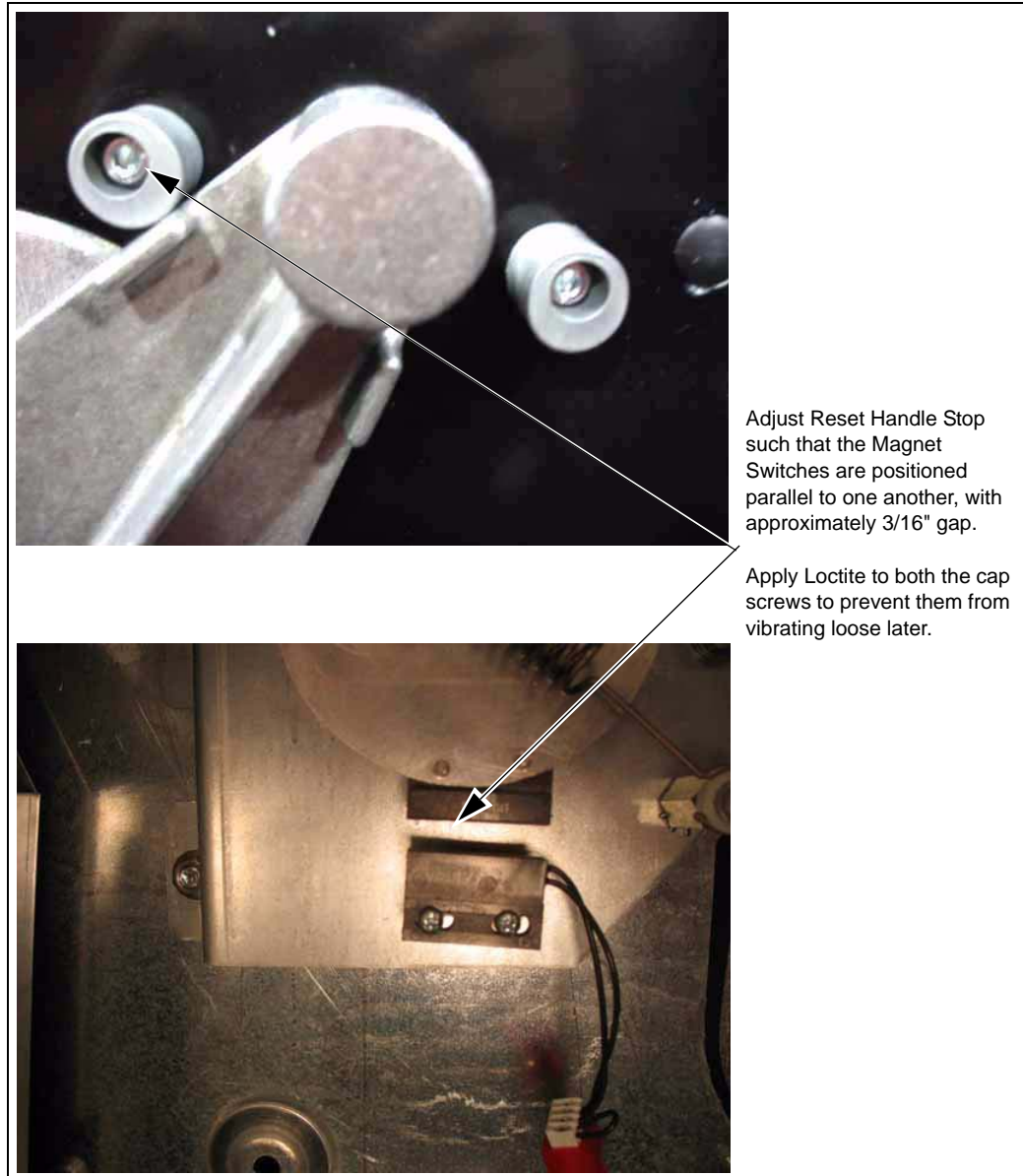
Figure 6: Reset the Shaft and Grommet



- 12** Reinstall the hardware that was removed in steps 5 to 7.

Note: On electronic units, when reinstalling the Reset Handle Stops, ensure that you adjust the stop rotation such that the magnetic switches inside the head are properly aligned. Proper alignment means the magnet switches should be positioned parallel to each other with a gap of approximately 3/16" (see Figure 3 on page 6 and Figure 4 on page 6). Loctite should be applied to both the cap screws used to install the stops so they do not vibrate later.

Figure 7: Adjustment of the Reset Handle



- 13** If the unit is Dual Hose, repeat steps 1 to 12 for the other side.

Application of the Sealant in the Electronics Cabinet

To apply the sealant in the Electronics Cabinet, proceed as follows:

- 1 Before applying the sealant provided in the kit (3M 2084 Metal Sealant), use rags and cleaner (or alcohol) to clean and dry the surfaces to be sealed. Then, apply the sealant at all locations identified in [Figure 8](#) and [Figure 9](#) on page 10.
- 2 Apply the sealant to fill gaps in all four bottom corners and all four top corners inside the cabinet. See [Figure 8](#).

Figure 8: Application of the Sealant - Top Corners

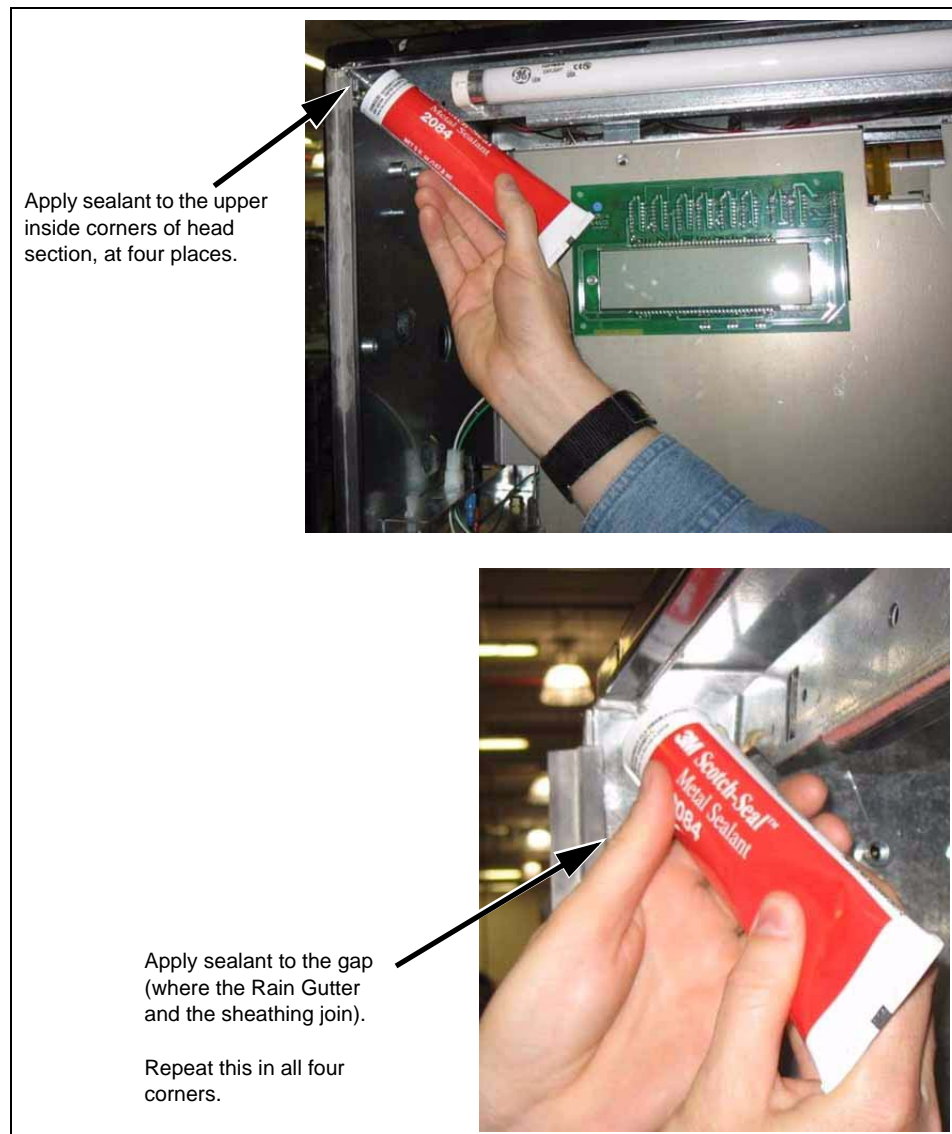


Figure 9: Application of the Sealant - Bottom Corners



Application of the Gasket Strip Across the Front Edge of the Rain Gutter

To apply the Gasket Strip across the front edge of the Rain Gutter, proceed as follows:

- 1 Measure and cut the Gasket Strip from the Kit (027078) to the correct length to fit across the front of the Rain Gutter.
- 2 Clean the front surface of the Rain Gutter.
- 3 Apply a thin bead of sealant across the front surface of the Rain Gutter. See [Figure 10](#).

Figure 10: Application of the Sealant - Front Surface



- Carefully apply the Gasket Strip to the front surface of the Rain Gutter. See [Figure 11](#).

Figure 11: Application of the Gasket Strip



- Wipe away any excess sealant when finished.
- Repeat steps 1 to 5 for the other side of the unit.

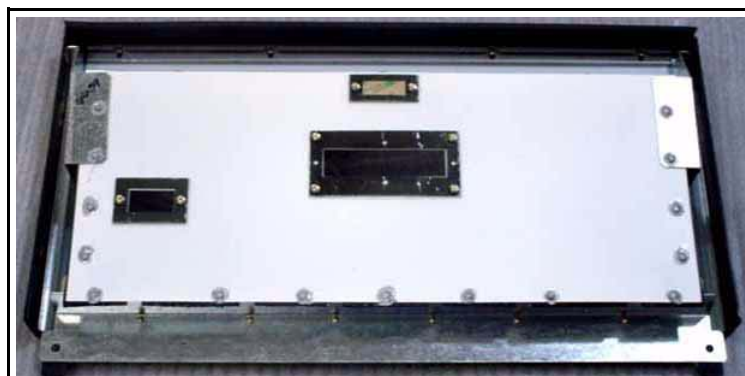
Installation of New Bezels

To install the new bezels, proceed as follows:

Note: If the unit has the TopKAT option, complete the steps in “[Installation of TopKAT Base Gaskets](#)” on page 12 before installing new bezels.

The improved bezels have neoprene gaskets around all the lenses, and also between the dial face and the bezel. The screws have been sealed. Additionally, a bulb gasket has been factory installed along the top edge of the bezel.

Figure 12: Improved Bezels with Neoprene Gaskets



- 1 Reinstall both the new bezels using the original fasteners. Ensure that the bezel sits snugly down on the unit.

Figure 13: Installation of New Bezels



- 2 Dispose the old bezels properly.

Installation of TopKAT Base Gaskets

To install TopKAT base gaskets, proceed as follows:

- 1 Lower the dispenser display panel.
- 2 Disconnect all power and signal lines from inside the TopKAT. Carefully pull these wires back down into the dispenser head. Ensure that you do not scrape wire insulation or damage terminations.
- 3 Remove the bolts inside the TopKAT that hold it to the Mounting Base. Carefully lay the TopKAT on its side, resting it on a cloth on top of the dispenser.
- 4 Remove both cross braces from inside the dispenser to expose the TopKAT mounting bolts.
- 5 Remove TopKAT mounting bolts to free the TopKAT Mounting Base from the dispenser.
- 6 Remove any old taped Gasket Strips from both sides of the Mounting Base and clean both the surfaces.
- 7 Remove the adhesive backing from the TopKAT Mounting Base Gaskets (M07800B001) and apply one to each side of the Mounting Base. Ensure that you line up the bolt holes on the gaskets to the bolt holes on the Mounting Base.
- 8 Reinstall the Mounting Base to the top of the dispenser.

- 9** Route the TopKAT wiring back up into the TopKAT.
- 10** Reinstall the TopKAT to the Mounting Base.
- 11** Reconnect all power and signal wires inside the TopKAT.
- 12** Reinstall the cross braces inside the dispenser.
- 13** Test all dispenser and TopKAT functionality.
- 14** Close the dispenser display panels and TopKAT doors.
- 15** Install the dispenser bezels.

The installation of the Weatherproofing kit is complete.

Phillips® is a registered trademark of Phillips Screw Company. Gasboy® is a registered trademark of Gasboy International. Atlas™ and TopKAT™ are trademarks of Gasboy International. 3M™ and Scotch-Seal™ are trademarks of 3M.



© 2007 GASBOY
7300 West Friendly Avenue · Post Office Box 22087
Greensboro, North Carolina 27420
Phone 1-800-444-5529 · <http://www.gasboy.com> · Printed in the U.S.A.
MDE-4687 Weatherproofing Instructions for Atlas™ 9800 Units · August 2007