

**Mechanical Totalizer Kits
K35489, K35490, K94580 for
The Advantage® Series**

Installation

Purpose

This document provides instructions for installing mechanical totalizers in The Advantage Series units manufactured without mechanical totalizers. Order one kit per product intake meter.

Kit Number	Unit of Measure
K35489	U.S. gallons
K35490	liters
K94580	Imperial gallons

Related Documents

MDE-2531	Pump and Dispenser Start-Up and Service
PT-1728	The Advantage Series Illustrated Parts Manual

Required Tools

- drift pin
- hammer
- lithium grease
- pliers
- socket set, U.S.

Parts List

Part Number	Description	Qty
T18464-G2	Assembly, cover plate and totalizer gears (U.S. gallon)	1 (K35489 kit only)
T18464-G3	Assembly, cover plate and totalizer gears (metric)	1 (K35490 kit only)
T18464-G4	Assembly, cover plate and totalizer gears (Imperial gallon)	1 (K94580 kit only)
N20965-12	Gear, counter	1
K77558-28	Cotter hair pin	1

Read All Related Documentation



Reviewing all related procedures before you begin work is important. Read and understand all related manuals thoroughly. If you do not understand a procedure, call 1-800-743-7501 for Gilbarco Tele-Support.

Read NFPA 30A and NFPA 70

Before servicing equipment, read and understand applicable information in the following codes:

- The National Electric Code (NFPA 70)
- The Automotive and Marine Service Code (NFPA 30A)
- Any national, state and local codes that may apply.

Failure to service equipment in accordance with NFPA 30A and NFPA 70 may adversely effect the safe use and operation of the system.



Safety Information



Alert Symbol

This is a standard alert symbol. When you see this symbol, along with the following signal words, be alert to the potential for personal injury or damage to equipment.

Signal Words

These signal words alert you to important safety hazards.

 DANGER
The hazard or unsafe practice will result in severe injury or death.

 WARNING
The hazard or unsafe practice may result in severe injury or death.

 CAUTION
The hazard or unsafe practice could result in minor injury or damage to equipment .

Safety Symbols

The following safety symbols are used in Gilbarco manuals to alert you to important safety hazards and precautions.



No Smoking

Sparks and embers from burning cigarettes or pipes can ignite fuels and their vapors.



No Open Flames

Open flames from matches, lighters, welding torches, etc. can ignite fuels and their vapors.



No Power Tools

Sparks from power tools (such as drills) can ignite fuels and their vapors.



No Vehicles In The Area

Moving vehicles in the area during service can create a potential for personal injury to you or others. Sparks from starting vehicles can ignite fuels and their vapors.



Turn Power Off

Live power to a dispensing device creates a potential shock hazard. Always turn power off to the dispensing device and associated STPs when servicing the unit.



No People In The Area

Unauthorized people in the area during service can create a potential for personal injury to you and them.



Use Safety Barricades

Unauthorized people or vehicles in the work area are dangerous. Always use safety cones or barricades, safety tape and your vehicle to block the work area.



Wear Eye Protection

Spraying fuel from residual pressure in the lines can cause serious eye injuries. Always wear eye protection.

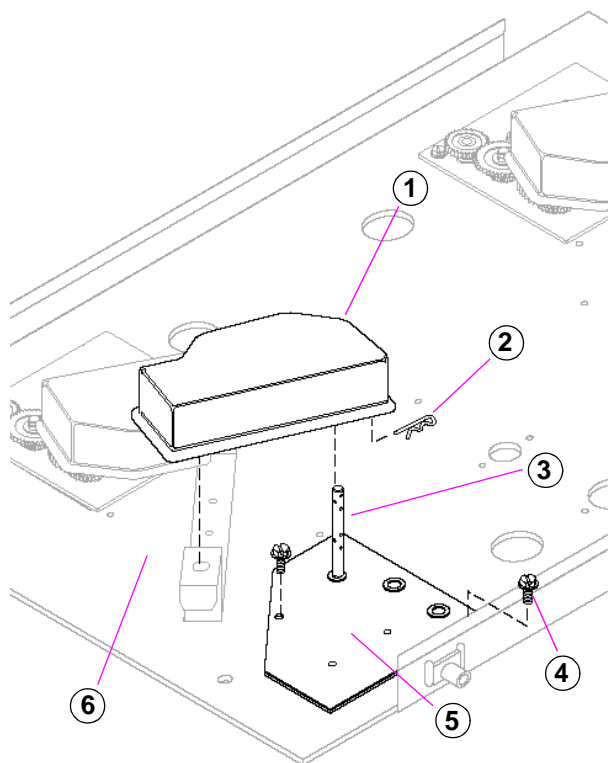
Installation

Use the following procedure to install a mechanical totalizer assembly for each product intake meter.



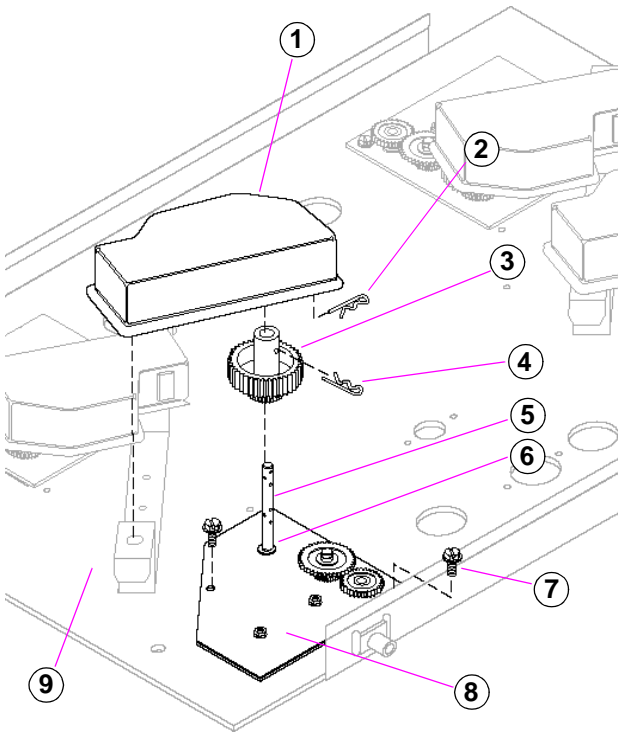
Before You Begin

- 1 Read all instructions before beginning.
- 2 Observe the following safety precautions.
 - Barricade the work area.
 - Do not allow vehicles or unauthorized people in work area.
 - Do not permit smoking or open flames in work area.
 - Do not use power tools in work area.
 - Wear protective gear while performing this installation.
- 3 Record all electronic totals.
- 4 Turn off all power to the unit, unit lights and STPs.
 - Use system circuit breakers.
 - Multiple disconnects may be required.
 - Isolate each pump at distribution box.



Removing Cover Plate

- 1 Open the main door. See MDE 2531 Pump and Dispenser Start-Up and Service Manual for instructions on opening main door.
- 2 Remove and retain cotter hair pin (2) holding pulser (1) onto pulser drive shaft (3).
- 3 Lift pulser (1) until it clears drive shaft (3) and rotate out of the way.
- 4 Remove screws (4) and cover plate (5) from air gap plate (6). Retain screws. Discard cover plate.



Installing Mechanical Totalizer

- 1 Install T18464-GX cover plate and totalizer gear assembly (8) onto pulser drive shaft (5).
Note: Parts fit snugly. Lubricate inner surface of bushing with a small amount of lithium grease, if necessary. If bushing (6) comes out, use a drift pin to carefully replace bushing.
- 2 Install and tighten the two screws (7) securing the cover plate (8) to the air gap plate (9).
- 3 Install N20965-12 counter gear (3) and K77558-28 cotter pin (4) onto the pulser drive shaft (5).
- 4 Position the pulser (1) on the pulser drive shaft (5) and secure with cotter pin (2).
- 5 Close the main door.

Testing Totalizer

- 1 Return the unit to operation.
- 2 Dispense 5 gallons of fuel into an approved container. Compare electronic totals to mechanical totals.

