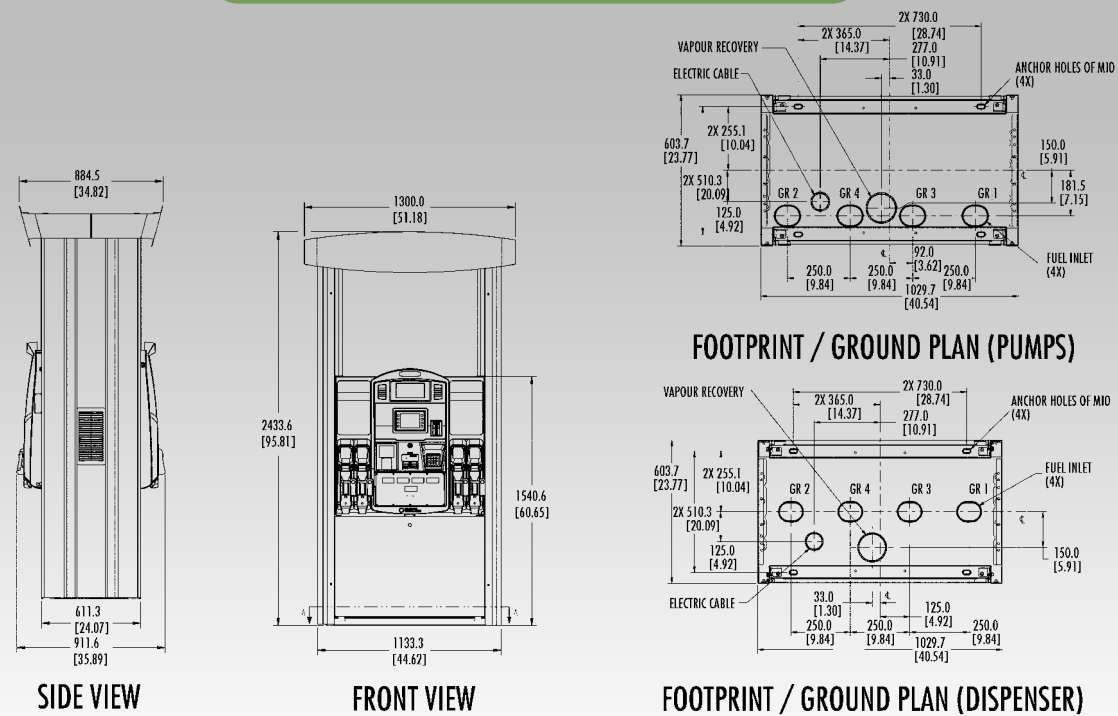


Technical Specifications



See MDE for full footprints and elevations.

Horizon is designed to minimize maintenance costs, maximize longevity, protect the security of your forecourt, and delight your customers with long-lasting good looks and features that include:

State-of-the-art customer convenience and branding features

- > Available integrated payment
- > Unlimited custom graphic options
- > A narrower profile for a more pleasant, open, and secure forecourt environment

Attractive and Long-lasting Image

- > Polycarbonate upper door and Polyester coated lower door decal prevent rust
- > Standard 4-year corrosion warranty on exterior surfaces

Enhanced, Secure Pulser

- > End-to-end encryption
- > Lift-off detection
- > Robust physical security features

Dependable Electronics

- > Tested at -40°C to +70°C, with 95% RH
- > No information lost during power outages
- > Dependable LED backlighting on displays

V+ Low-Drift Meter

- > The most accurate and lowest drift positive displacement meter in the world
- > Fixed stroke length by design
- > Highly tuned, wear-resistant materials

Shipping Information

WEIGHTS AND DIMENSIONS				
Grades of Fuel	1	2	3	4
Suction	300 kg	320 kg	340 kg	360 kg
Pressure	340 kg	400 kg	460 kg	520 kg
Shipping Dimensions	1016mm x 1219mm x 2489mm			

New ideas.

New opportunities.



New Horizons.



The new Horizon offers the world's most accurate positive displacement fuel meter. A durable display board with a large 38mm readout and LED backlighting. A secure interface pulser (SIP) that can save retailer thousands every year. And it uses those forecourt-proven German hydraulic engineering to dispense up to four different types of fuel. But that's just the beginning.

Every new Horizon also comes with new branding opportunities. Unprecedented expansion possibilities and technological innovation, today and tomorrow. And new sales. Lots of them. Because, as fuel retailers all over the world have discovered, new Horizons create new opportunities. Where will they take you?

Behind every successful forecourt.

Frequently Asked Questions

Q: I've been happy with my C-frame dispensers for years. Why should I change?

A: Horizon represents a new generation of dispenser technology that does more for your brand, your customers, and your bottom line. With expanded branding capabilities, integrated payment, and other innovations, it offers your customers a better experience, helps to keep labor costs down, and reduces image refresh and other maintenance costs.

Q: It looks great. But will I still be happy with it years from now?

A: First and foremost, Horizon is designed for durability. With long-lasting electronics, rust-proof polycarbonate exterior doors and exceptionally durable graphics, it is designed for maximum uptime and minimal repair costs for years to come. And because Horizon uses the same reliable components as Europe's most popular SK700 dispenser, you can be sure that any replacement parts you do need will be readily available and reasonably priced.

Q: What options are available?

A: With a wide variety of branding and merchandising opportunities coming in the near future, Horizon's value to your business will continue to grow. Replaceable polycarbonate panels mean that it is easy to upgrade to today's integrated payment inside the pump, and it will be easy to upgrade to future features as they become available.

Q: How do I know Horizon will do what it promises?

A: Using components from the world's most trusted dispenser lines, Horizon components have already proved themselves at over 200,000 sites around the world.

Q: Where is the Horizon made?

A: The Horizon is built in the USA, with full ATEX/MID certifications, and will also be built in Salzkotten, Germany.

www.gilbarco.eu/horizon