

## Introduction

### Purpose

This manual provides supplemental information for the following documents:

- *MDE-5100 Passport Cashier Workstation Using the RV042 Firewall Router*
- *MDE-5536 Passport Cashier Workstation Using the SZR or MNSP Firewall Router*
- *MDE-5537 Passport Combined Cashier/Manager Workstation Using the SZR or MNSP Firewall Router*
- *MDE-5539 Passport Enhanced Dispenser Hub 2 (Passport V10 or Later) with SZR and MNSP Firewall Router*
- *MDE-5541 Passport Standalone Manager Workstation with SZR or MNSP Firewall*

### Intended Users

This manual is intended for Authorized Service Contractors (ASCs) who install Passport™ systems.

### Table of Contents

Topic	Page
<a href="#">Introduction</a>	1
<a href="#">Important Safety Information</a>	3
<a href="#">Federal Communications Commission (FCC) Warning</a>	5
<a href="#">Hazardous Zones</a>	5
<a href="#">UL Approvals, System Requirements, and Component Specifications</a>	5
<a href="#">Before Installing Passport System</a>	6
<a href="#">Parts List</a>	9
<a href="#">Appendix: Procedure to Change POSIFLEX Monitor (LM-3110E) Resolution Setting</a>	16

### Related Documents

Document Number	Title	GOLD <sup>SM</sup> Library
MDE-2149	Warranty Return Materials Authorization Form	<ul style="list-style-type: none"> <li>• Gilbarco® Forms</li> <li>• Encore and Eclipse</li> </ul>
MDE-3620	Point of Sale Systems Site Preparation Manual	Site Prep
MDE-3816	Passport Hardware Start-up and Service Manual	<ul style="list-style-type: none"> <li>• Passport</li> <li>• Service Manual</li> </ul>
MDE-4822	Passport Enhanced Dispenser Hub Installation Instructions	<ul style="list-style-type: none"> <li>• Passport</li> <li>• Service Manual</li> </ul>
MDE-4891	Enhanced Dispenser Hub (Passport V8.02+) Installation Poster	Passport
MDE-4910	Passport Enhanced Dispenser Hub Connections Manual	Passport
MDE-5083	Passport Hardware Start-up and Service Manual for PX60 Platform	Passport
MDE-5100	Passport Cashier Workstation Using the RV042 Firewall Router	Passport

<b>Document Number</b>	<b>Title</b>	<b>GOLD<sup>SM</sup> Library</b>
MDE-5155	7-Eleven® Standalone Enhanced Dispenser Hub (EDH) Quick Reference Installation Poster	7-Eleven
MDE-5536	Passport Cashier Workstation Using the SZR or MNSP Firewall Router	Passport
MDE-5537	Passport Combined Cashier/Manager Workstation Using the SZR or MNSP Firewall Router	Passport
MDE-5539	Passport Enhanced Dispenser Hub 2 (Passport V10 or Later) with SZR and MNSP Firewall Router	Passport
MDE-5541	Passport Standalone Manager Workstation with SZR or MNSP Firewall Router	Passport

## Abbreviations and Acronyms

<b>Term</b>	<b>Description</b>
ASC	Authorized Service Contractor
CAT5	Category 5
CWS	Cashier Workstation
D-Box	Distribution Box
DEF	Diesel Exhaust Fluid
EDH	Enhanced Dispenser Hub
EMC™	Environmental Management Console
FCC	Federal Communications Commission
GOLD	Gilbarco Online Documentation
GSM	Gilbarco Security Module
ISO	International Organization for Standardization
LAN	Local Area Network
LCD	Liquid Crystal Display
MWS	Manager Workstation
NEC®	National Electrical Code
NFPA	National Fire Protection Association
OSHA	Occupational Safety and Health Administration
POS	Point of Sale
RAS	Remote Access Service
RFID	Radio Frequency Identification
STP	Submersible Turbine Pump
SZR	Secure Zone Router
UL®	Underwriters' Laboratories
UPS	Uninterruptible Power Supply
USB	Universal Serial Bus
VGA	Video Graphics Array
VPN	Virtual Private Network
VSAT	Very Small Aperture Terminal

# Important Safety Information

**Notes: 1) Save this Important Safety Information section in a readily accessible location.**

**2) Although Diesel Exhaust Fluid (DEF) is non-flammable, Diesel is flammable. Therefore, for DEF cabinets that are attached to Diesel dispensers, follow all the notes in this section that pertain to flammable fuels.**

This section introduces the hazards and safety precautions associated with installing, inspecting, maintaining, or servicing this product. Before performing any task on this product, read this safety information and the applicable sections in this manual, where additional hazards and safety precautions for your task will be found. Fire, explosion, electrical shock, or pressure release could occur and cause death or serious injury, if these safe service procedures are not followed.


## Preliminary Precautions


You are working in a potentially dangerous environment of flammable fuels, vapors, and high voltage or pressures. Only trained or authorized individuals knowledgeable in the related procedures should install, inspect, maintain, or service this equipment.

## Emergency Total Electrical Shut-Off

The first and most important information you must know is how to stop all fuel flow to the pump/dispenser and island. Locate the switch or circuit breakers that shut off all power to all fueling equipment, dispensing devices, and Submerged Turbine Pumps (STPs).

**⚠ WARNING**

 The EMERGENCY STOP, ALL STOP, and PUMP STOP buttons at the cashier's station WILL NOT shut off electrical power to the pump/dispenser. This means that even if you activate these stops, fuel may continue to flow uncontrolled.

 You must use the TOTAL ELECTRICAL SHUT-OFF in the case of an emergency and not the console's ALL STOP and PUMP STOP or similar keys.

## Total Electrical Shut-Off Before Access

Any procedure that requires access to electrical components or the electronics of the dispenser requires total electrical shut off of that unit. Understand the function and location of this switch or circuit breaker before inspecting, installing, maintaining, or servicing Gilbarco equipment.

## Evacuating, Barricading, and Shutting Off

Any procedure that requires access to the pump/dispenser or STPs requires the following actions:



- An evacuation of all unauthorized persons and vehicles from the work area
- Use of safety tape, cones, or barricades at the affected unit(s)
- A total electrical shut-off of the affected unit(s)

## Read the Manual

Read, understand, and follow this manual and any other labels or related materials supplied with this equipment. If you do not understand a procedure, call the Gilbarco Support Center at 1-800-800-7498. It is imperative to your safety and the safety of others to understand the procedures before beginning work.

## Follow the Regulations

Applicable information is available in National Fire Protection Association (NFPA) 30A; *Code for Motor Fuel Dispensing Facilities and Repair Garages*, NFPA 70; *National Electrical Code (NEC)*, Occupational Safety and Health Administration (OSHA) regulations and federal, state, and local codes. All these regulations must be followed. Failure to install, inspect, maintain, or service this equipment in accordance with these codes, regulations, and standards may lead to legal citations with penalties or affect the safe use and operation of the equipment.

## Replacement Parts

Use only genuine Gilbarco replacement parts and retrofit kits on your pump/dispenser. Using parts other than genuine Gilbarco replacement parts could create a safety hazard and violate local regulations.

## Safety Symbols and Warning Words

This section provides important information about warning symbols and boxes.

### Alert Symbol



This safety alert symbol is used in this manual and on warning labels to alert you to a precaution which must be followed to prevent potential personal safety hazards. Obey safety directives that follow this symbol to avoid possible injury or death.

### Signal Words

These signal words used in this manual and on warning labels tell you the seriousness of particular safety hazards. The precautions below must be followed to prevent death, injury, or damage to the equipment:



**DANGER:** Alerts you to a hazard or unsafe practice which will result in death or serious injury.



**WARNING:** Alerts you to a hazard or unsafe practice that could result in death or serious injury.



**CAUTION with Alert symbol:** Designates a hazard or unsafe practice which may result in minor injury.

**CAUTION without Alert symbol:** Designates a hazard or unsafe practice which may result in property or equipment damage.

## Working With Fuels and Electrical Energy

### Prevent Explosions and Fires

Fuels and their vapors will explode or burn, if ignited. Spilled or leaking fuels cause vapors. Even filling customer tanks will cause potentially dangerous vapors in the vicinity of the dispenser or island.

DEF is non-flammable. Therefore, explosion and fire safety warnings do not apply to DEF lines.

## Important Safety Information

### No Open Fire



Open flames from matches, lighters, welding torches, or other sources can ignite fuels and their vapors.

### No Sparks - No Smoking



Sparks from starting vehicles, starting, or using power tools, burning cigarettes, cigars, or pipes can also ignite fuels and their vapors. Static electricity, including an electrostatic charge on your body, can cause a spark sufficient to ignite fuel vapors. Every time you get out of a vehicle, touch the metal of your vehicle, to discharge any electrostatic charge before you approach the dispenser island.

### Working Alone

It is highly recommended that someone who is capable of rendering first aid be present during servicing. Familiarize yourself with Cardiopulmonary Resuscitation (CPR) methods, if you work with or around high voltages. This information is available from the American Red Cross. Always advise the station personnel about where you will be working, and caution them not to activate power while you are working on the equipment. Use the OSHA Lockout/Tagout procedures. If you are not familiar with this requirement, refer to this information in the service manual and OSHA documentation.

### Working With Electricity Safely

Ensure that you use safe and established practices in working with electrical devices. Poorly wired devices may cause a fire, explosion, or electrical shock. Ensure that grounding connections are properly made. Take care that sealing devices and compounds are in place. Ensure that you do not pinch wires when replacing covers. Follow OSHA Lockout/Tagout requirements. Station employees and service contractors need to understand and comply with this program completely to ensure safety while the equipment is down.

### Hazardous Materials

Some materials present inside electronic enclosures may present a health hazard if not handled correctly. Ensure that you clean hands after handling equipment. Do not place any equipment in the mouth.

#### WARNING

The pump/dispenser contains a chemical known to the State of California to cause cancer.

#### WARNING

The pump/dispenser contains a chemical known to the State of California to cause birth defects or other reproductive harm.



Gilbarco Veeder-Root encourages the recycling of our products. Some products contain electronics, batteries, or other materials that may require special management practices depending on your location. Please refer to your local, state, or country regulations for these requirements.

## In an Emergency

### Inform Emergency Personnel

Compile the following information and inform emergency personnel:

- Location of accident (for example, address, front/back of building, and so on)
- Nature of accident (for example, possible heart attack, run over by car, burns, and so on)
- Age of victim (for example, baby, teenager, middle-age, elderly)
- Whether or not victim has received first aid (for example, stopped bleeding by pressure, and so on)
- Whether or not a victim has vomited (for example, if swallowed or inhaled something, and so on)

#### WARNING



Gasoline/DEF ingested may cause unconsciousness and burns to internal organs. Do not induce vomiting. Keep airway open. Oxygen may be needed at scene. Seek medical advice immediately.

#### WARNING

DEF generates ammonia gas at higher temperatures. When opening enclosed panels, allow the unit to air out to avoid breathing vapors. If respiratory difficulties develop, move victim away from source of exposure and into fresh air. If symptoms persist, seek medical attention.

#### WARNING



Gasoline inhaled may cause unconsciousness and burns to lips, mouth, and lungs. Keep airway open. Seek medical advice immediately.

#### WARNING



Gasoline/DEF spilled in eyes may cause burns to eye tissue. Irrigate eyes with water for approximately 15 minutes. Seek medical advice immediately.

#### WARNING



Gasoline/DEF spilled on skin may cause burns. Wash area thoroughly with clear water. Seek medical advice immediately.

#### WARNING

DEF is mildly corrosive. Avoid contact with eyes, skin, and clothing. Ensure that eyewash stations and safety showers are close to the work location. Seek medical advice/recommended treatment if DEF spills into eyes.

**IMPORTANT:** Oxygen may be needed at scene if gasoline has been ingested or inhaled. Seek medical advice immediately.

### Lockout/Tagout

Lockout/Tagout covers servicing and maintenance of machines and equipment in which the unexpected energization or start-up of the machine(s) or equipment or release of stored energy could cause injury to employees or personnel. Lockout/Tagout applies to all mechanical, hydraulic, chemical, or other energy, but does not cover electrical hazards. Subpart S of 29 CFR Part 1910 - Electrical Hazards, 29 CFR Part 1910.333 contains specific Lockout/Tagout provision for electrical hazards

## Federal Communications Commission (FCC) Warning

### IMPORTANT INFORMATION

This equipment has been tested and found to comply with the limits for a Class A digital device pursuant to Part 15 of the FCC Rules. These limits are designed to provide reasonable protection against harmful interference when the equipment is operated in a commercial environment. This equipment generates, uses, and can radiate radio frequency energy, and if not installed and used in accordance with the instruction manual, may cause harmful interference to radio communications. Operation of this equipment in a residential area is likely to cause harmful interference in which case the user will be required to correct the interference at his own expense. Changes or modifications not expressly approved by the manufacturer could void the user's authority to operate this equipment.

The long term characteristics or the possible physiological effects of radio frequency electromagnetic fields have not been investigated by Underwriters' Laboratories (UL) Inc.

## Hazardous Zones

All Passport system components are NOT for use over hazardous zones with the exception of the EDH and Distribution Box (D-Box), which can be mounted over hazardous zones.

### WARNING

The Passport minitower contains no user serviceable parts. Due to the high energy components within the enclosure, service of the minitower must be performed by Gilbarco ASCs only.

## UL Approvals, System Requirements, and Component Specifications

### UL Approvals

UL File#	Gilbarco International Organization for Standardization (ISO) 9001:2000 Registration
A8120	Gilbarco is an EN ISO 9001:2000, BS EN ISO 9001:2000, ANSI/ASQC Q9001:2000 Registered Organization.
E165027	The Passport system is listed by UL and meets the requirements of UL Standard 60950 Information Technology Equipment including Electrical Business Equipment.

## System Requirements

This section provides the system requirements of the Passport system.

### Electrical Service

System	Voltage Requirements	Current Requirements
Uninterruptible Power Supply (UPS), Cashier Workstation [CWS (refer to <a href="#">Note 1</a> )]	120 VAC, 60 Hz	20 A (supplying two isolated ground receptacles)
UPS, Combined CWS/Manager Workstation (MWS), or Standalone MWS and Report Printer (refer to <a href="#">Note 2</a> )	120 VAC, 60 Hz	20 A branch circuit (supplying four isolated ground receptacles)

Notes: 1) Power two UPS units for a maximum of two CWS, per 20 A circuit.

2) Power one UPS unit for a maximum of one Combined CWS/MWS or Standalone MWS, and one Report Printer, per 20 A circuit.

### Operating Environment

Aspect	Limits
Temperature*	50 to 104 °F (10 to 40 °C)
Relative Humidity	10 to 80%
Altitude	Sea level to 10,000'

\* Thermal printers must use Gilbarco-specified paper.

### Storage Environment

Aspect	Limits
Temperature	-22 to 131 °F (-30 to 55 °C)
Relative Humidity	5 to 95% (non-condensing)
Altitude	Sea level to 30,000'

## Before Installing Passport System

This section provides the following information for installing a POS system:

- [“Unpacking Equipment”](#)
- [“Preliminary Preparation”](#) on [page 7](#)
- [“Mounting Locations”](#) on [page 7](#)
- [“Routing Data Cables”](#) on [page 8](#)

Read this section thoroughly before installing the system.

### Unpacking Equipment

Upon delivery, unpack all system devices and inspect each device for damage. Check device Model and Serial Numbers with the packing list. You must report all evident shipping damage to the carrier. Gilbarco warranty does not cover shipping damage.

*Note: Damage resulting from improper storage voids the Gilbarco warranty.*

After you have inspected the system equipment, store it indoors in its original shipping carton, until the installation. This protects the equipment from dirt and damage.

## Charging UPS

Unpack and connect the UPS to an AC power outlet, and allow the battery to charge when you are setting up the other Passport System components.

After charging for about 40 minutes, the UPS will be able to provide up to 15 minutes of backup power. After about two hours, the UPS changes from Fast Charge to Trickle Charge. The UPS requires approximately four hours to charge completely.

## Transporting Equipment

Always transport the equipment to a site in its original packaging, to avoid damage to the shock sensitive components such as hard disk drives.

## Returning Equipment

All equipment or components returned under Gilbarco warranty policy or for repair, must be packaged properly to avoid shipping damage.

- Return the equipment in its original shipping container. If the original materials are not available, use a durable reinforced corrugated box and suitable packing material (polyfoam chips, polyurethane foam chips, or polystyrene foam chips).
- Fill the bottom of the container with at least 2 inches of packing material.
- Ensure that the device is firmly packed.
- Include a description of the malfunction or damage, and return that with shipping information.
- Prepare a Warranty Return Materials Authorization Form (for more information, refer to *MDE-2149 Warranty Return Materials Authorization*) to ship with the device.

*Note: Gilbarco recommends that returned equipment be insured. Gilbarco inspects all returned equipment for any damage caused during return shipment. The customer is responsible for all repair costs of damage to the equipment caused by improper packing during return shipment.*

## Preliminary Preparation

Inspect the site and all system equipment before the equipment installation. Ensure that all the required materials are present and the site meets all installation criteria, as specified in this manual and in *MDE-3620 Point of Sale Systems Site Preparation Manual*.

## Mounting Locations

To mount and connect the equipment, refer to the appropriate installation poster (refer to “[Introduction](#)” on [page 1](#)). Following guidelines must be followed when installing the equipment:

- All equipment (except the equipment located in the Manager’s office) must be accessible to the site operators and service technicians.
- Install all equipment in an enclosed, weatherproof structure. Ambient room temperature must not exceed 104 °F (40 °C) or fall below 50 °F (10 °C). The maximum ambient temperature may be allowed only if the equipment is allowed free air flow.
- Do not install the equipment in areas exposed to direct sunlight. Provide shading if direct sunlight exposure exists.
- Do not expose equipment to high humidity or where liquid spills may occur.

- The Virtual Private Network (VPN) LAN Router (Q13708-07B), LAN Router (Q13708-05), and/or VPN Firewall Router (Q13078-08B) must be installed in a place where the Power button cannot be pushed and turned off unintentionally. If power to the VPN LAN Router, LAN Router, or VPN Firewall Router is lost, then fuel dispensers, VSAT, Back Office PC, and Passport workstations will be unable to communicate with each other.
- All Passport System components are NOT for use over hazardous zones with the exception of the EDH, and D-Box, which can be mounted over hazardous zones.
- The EDH must be installed near the Combined MWS or CWS #1. For more information, refer to *MDE-4822 Passport Enhanced Dispenser Hub Installation Instructions*.

### CAUTION

PA0421 VeriFone® MX915 PIN Pads must be installed within 90 meters of the LAN switch.

## Routing Data Cables

Follow these guidelines when routing data cables:

- Allow sufficient space to route cables between the equipment.
- Do not route data cables in the same conduit as AC wiring or near sources of interference such as fluorescent lights, compressor wiring, and so on.
- Do not coil, bend, or tie-wrap together surplus lengths of LAN or data cables. Install shorter cables, if required. Use Velcro®-type cable-ties.
- Do not tie-wrap data cables to AC conduit to avoid surge and spike noise coupling.
- Do not coil or tie-wrap data cable and AC line cords together.
- Long Gilbarco data cables can be routed in plastic slotted raceways or wire mold, if required.

### CAUTION

Devices such as PIN Pads, Car Wash, Tank Monitor™, and Price Sign Controllers will be connected to the EDH (after Passport V8.02 or later software upgrade) through an RS-232 connection. Gilbarco recommends an RS-232 line booster for these devices if the Category 5 (CAT5) cable distance (run) is between 50 and 100 feet. If the CAT5 cable distance (run) is greater than 100 feet, an RS-232 line booster will be required along with an additional booster for every additional 50 feet.

## Assistance

If you have any problems with site installation, contact the Gilbarco Distributor or ASC responsible for completing the site installation and the system start-up.



# Parts List

## Hardware

The following table lists the hardware for Passport PX52:

Item	Part Number	Description	CWS		Combined CWS/MWS		Standalone MWS	
			Qty	Standard (S) Optional (O)	Qty	Standard (S) Optional (O)	Qty	Standard (S) Optional (O)
			0	N/A	1	S	1	S
Server	PA0324PS52A ~ OR ~ PA0324PS52D	6' Power Cord, RAS Modem and Phone Line Cord, 6' included.	0	N/A	1	S	1	S
USB-RS-232 Converter	M01700B103	USB-RS-232 Converter 8-port, 2m USB Cable included.	1	S	1	S	1	S
LAN Hub/Router	Q13708-01A ~ OR ~ Q13708-05(B)	LAN Hub 8-port with 6' DC Power Supply Cord  LAN Router 8-port with 6' DC Power @Supply Cord and 6' LAN Patch Cable included	0	N/A	1	O	1	O
	~ OR ~		0	N/A	1	S	1	S
UPS	PA04240000	Secure Zone Router (SZR)	0	N/A	1	S	1	S
	PA03310004	UPS, 6' USB Cable, and 6' Power Cord included (for V4 and later)	1	O	1	O	1	O
EDH2	PA0419000X	Dispenser Hub, Power Supply, and two 6' LAN Patch Cords included	0	N/A	1	S	1	S
D-Box	PA03060020	D-Box, Power Cable, 6' included	0	N/A	1	O	1	O
Monitor (Non-touchscreen)	PA03390800 See Note 4	9.7-inch Color Liquid Crystal Display (LCD) Monitor with 12 Volt Adapter and Video Graphics Array (VGA) Cable	0	N/A	0	N/A	1	S

Notes: 1) USB to RS-232 Converter, choose 16-port converter, if Tank Monitor is required for the order.

2) CAT5 cable must be ordered separately. XX = 10, 25, and 50' (maximum) recommended without line booster. Allow 10' (maximum) as special; do not order this, if line booster is chosen.

3) Required for installation of Passport V8.02 and later.

4) For setting the Posiflex monitor resolution, refer "Appendix: Procedure to Change POSIFLEX Monitor (LM-3110E) Resolution Setting" on page 16.

**Parts List**

Item	Part Number	Description	CWS				Combined CWS/MWS				Standalone MWS			
			Qty	Standard (S)	Optional (O)	Qty	Standard (S)	Optional (O)	Qty	Standard (S)	Optional (O)	Qty	Standard (S)	Optional (O)
Report Printer	PA03400008	Brother® HL-L2370DW Report Printer	0	N/A	N/A	1	S	1	S	1	S	1	S	
Gilbarco Security Module (GSM)	PA0258XXXXXXX	GSM, DC Cable, 6' to Power Supply, and AC Cable, 6' to Wall. The 10' Q13850-10 CAT5 Cables and Gender Menders are included in the GSM. The 04B Gender Mender is included on the Harness.	0	N/A	N/A	1	O	1	O	1	O	1	O	
	Q13180-20BS	Gender Mender at USB Converter, Pack of 5 (included with the Server)	0	N/A	N/A	1	S	1	S	1	S	1	S	
Car Wash Interface Cable parts	N/A	Car Wash Controller (Order from third-party)	0	N/A	N/A	0	N/A	0	N/A	0	N/A	0	N/A	
	Q13850-XX (see Note 2)	CAT5 Cable (to USB Converter)	0	N/A	N/A	1	O	1	O	1	O	1	O	
	Q13241-102	Line Booster Kit, 50' and 100' CAT5 Cables, Gender Menders, and Power Supply included (order separately, for Cable greater than 50' or special 100')	0	N/A	N/A	1	O	1	O	1	O	1	O	
	Q13180-17BS	Gender Mender, Ryko® Code A Wash 4 and Unitec®, bag of 5 only (packed in Combined and Standalone Install Kits)	0	N/A	N/A	1	N/A	1	N/A	1	Ref	1	Ref	
	Q13180-16BS	Gender Mender, Code A Wash 3 bag of 5 only (packed in Combined and Standalone Install Kits)	0	N/A	N/A	1	N/A	1	N/A	1	Ref	1	Ref	
	Q13180-20BS	Gender Mender at USB Converter, pack of 5 (included with the server)	0	N/A	N/A	1	N/A	1	N/A	1	Ref	1	Ref	
Dial Network Modem	PA02960009	Modem, MultiTech® 56k v.92	0	N/A	N/A	1	O	1	O	1	O	1	O	
	Q13240-09	6' Modem Cable (to USB Converter)	0	N/A	N/A	1	O	1	O	1	O	1	O	

Notes: 1) USB to RS-232 Converter, choose 16-port converter, if Tank Monitor is required for the order.

2) CAT5 cable must be ordered separately. XX = 10, 25, and 50' (maximum) recommended without line booster. Allow 10' (maximum) as special, do not order this, if line booster is chosen.

3) Required for installation of Passport V8.02 and later.

4) For setting the Posiflex monitor resolution, refer "Appendix: Procedure to Change POSIFLEX Monitor (LM-3110E) Resolution Setting" on page 16.

Item	Part Number	Description	CWS			Combined CWS/MWS			Standalone MWS			
			Qty	Standard (S) Optional (O)	Standard (S) Optional (O)	Qty	Standard (S) Optional (O)	Standard (S) Optional (O)	Qty	Standard (S) Optional (O)	Standard (S) Optional (O)	
Satellite Dish Interface Cable Parts	Q13850-06	LAN Patch Cable, 6' (packed in Combined and Standalone Install Kits)	0	N/A	N/A	1	N/A	1	Ref	1	Ref	N/A
	Q13850-C06	LAN Crossover Patch Cable, 6' (may be required when using Q13708-05 Router)	0	N/A	N/A	1	N/A	1		1		N/A
Client	PA0324PC52B ~ OR ~ PA0324PC52D	PC52 Client, Recovery Disk, Keyboard, Mouse, and 6' Power Cord included	0-5	O	O	0	N/A	0		0		N/A
	PA01570080	5.5-ft fixed RJ12 Passport Black Case Drawer with Media Slots and 31-Ohm Solenoid	1	S	S	1	S	0		0		N/A
Cash Drawer	Q13174-06	Mounting Brackets	0	O	O	0	O	0		0		N/A
	Q13174-12	Locking Cover for Insert Tray	1	O	O	1	O	0		0		N/A
Thermal Printer	PA04270013	Thermal Printer with Power Supply, 6' DC Cord, 6' Power Cord included. Printer Serial Cable in Install Kits	1	S	S	1	S	0		0		N/A
	PA02710303, PA02710403, PA02710513A	Cashier Scanner, 4' Coiled Serial Cable, DC Cable, 2m to Wall Power Supply included. Printer Serial Cable is included in the Cable Harness Assembly	1	O	O	1	O	0		0		N/A
Customer Display	PA03270103A PA03270400	Customer Display, 4' Serial Cable, and DC Cable 8' to 115 VAC Wall Power Supply included	1	S	S	1	S	0		0		N/A
	PA03440104	15" LCD Touchscreen, 5' 6" Video Cable, 5' 6" Serial Cable, 6' Power Cord, and 2m Audio Cable included	1	S	S	1	S	0		0		N/A
PIN Pad with Card Reader	PA0411000XXX PA0412000XXX PA0421100XXX	PIN Pad with Card Reader	1	O	O	1	O	0		0		N/A
	M01627B003	PIN Pad Pedestal	1	O	O	1	O	0		0		N/A
PIN Pad RFID Reader (Mat)	C00016-011PPE	RFID Mat Reader	1	O	O	1	O	0		0		N/A

Notes: 1) USB to RS-232 Converter, choose 16-port converter, if Tank Monitor is required for the order.

2) CAT5 cable must be ordered separately. XX = 10, 25, and 50' (maximum) recommended without line booster. Allow 10' (maximum) as special, do not order this, if line booster is chosen.

3) Required for installation of Passport V8.02 and later.

4) For setting the Posiflex monitor resolution, refer "Appendix: Procedure to Change POSIFLEX Monitor (LM-3110E) Resolution Setting" on page 16.

**Parts List**

Item	Part Number	Description	CWS		Combined CWS/MWS				Standalone MWS	
			Qty	Standard (S) Optional (O)	Standard (S) Optional (O)	Qty	Standard (S) Optional (O)	Standard (S) Optional (O)	Qty	Standard (S) Optional (O)
			0	N/A	0	1	0	1	1	0
C-2 D-Box Conversion Kit	Q13241-118	D-Box (PA0261) Cable Kit for C-2 to Passport Conversion	0	N/A	0	1	0	1	1	0

- Notes: 1) USB to RS-232 Converter, choose 16-port converter, if Tank Monitor is required for the order.  
 2) CAT5 cable must be ordered separately. XX = 10, 25, and 50' (maximum) recommended without line booster. Allow 10' (maximum) as special, do not order this, if line booster is chosen.  
 3) Required for installation of Passport V8.02 and later.  
 4) For setting the Posiflex monitor resolution, refer "Appendix: Procedure to Change POSIFLEX Monitor (LM-3110E) Resolution Setting" on page 16.

The following table lists the hardware for PX60:

Item	Part Number	Description	CWS				Combined CWS/MWS	
			Qty	Standard (S)		Qty	Standard (S)	
				Optional (O)	Optional (O)		Optional (O)	Optional (O)
Passport POS Software	KS7XX-YYY	Passport POS Application Software	0	N/A	N/A	1	S	
Server	PA0324PB60	PS60 Server, Recovery Disk, Keyboard, Mouse, 6' Power Cord, RAS Modem, and Phone Line Cord, 6' included	0	N/A	N/A	1	S	
Combined Install Kit	PA0324PS65	PS65 EDGE Server	0	N/A	N/A	1	O	
	M01462K002Q	Combined Install Kit	0	N/A	N/A	1	S	
Cashier Install Kit	M01462K001Q	Cashier Install Kit	1	S	S	0	N/A	
LAN Router	Q13708-05B	LAN Hub 8-port with 6' DC Power Supply Cord (previous part number- Q13708-01)	0	N/A	N/A	1	O	
SZR	PA0424000X	SZR with 6-inch DC Power Supply Cord	0	N/A	N/A	1	O	
QWERTY Keyboard and Mouse	Q13181-09	USB QWERTY Keyboard and Mouse	1	S	S	1	S	
UPS	PA03310004	UPS, 6' USB Cable, and 6' Power Cord included	1	S	S	1	S	
EDH	PA0419XXXX	PE60 EDH, Power Supply and two 6' LAN Patch Cords included	0	N/A	N/A	1	S	
D-Box	PA03060020	Two-wire D-Box, Power Cable, 6' included	0	N/A	N/A	1 - 4	O	
	PA03380000	Wayne® D-Box	0	N/A	N/A	1 - 2	O	
	PA03380001	Tokheim® D-Box	0	N/A	N/A	1	O	
Report Printer	PA03400008	Brother HL-L2370DW Report Printer (USB Cable in Install Kits)	0	N/A	N/A	1	S	
Clients	PA0324PC60	PC60 Client, Recovery Disk, Keyboard, Mouse, Mouse Pad, and 6' Power Cord included	0 - 5	S	S	N/A	O	
Cash Drawer	PA01570080	5.5-ft fixed RJ12 Passport Black Case Drawer with Media Slots and 31-Ohm Solenoid	1	S	S	1	S	
	Q13174-12	Locking Cover for Insert Tray	1	O	O	1	O	
Thermal Printer	PA04270013	Thermal Printer with Power Supply, 6' DC Cord, and 6' Power Cord	1	S	S	1	S	

**Parts List**

Item	Part Number	Description	CWS		Combined CWS/MWS	
			Qty	Standard (S) Optional (O)	Qty	Standard (S) Optional (O)
Scanner	PA02710303,	Scanner, Coiled Serial Cable, 4' and DC Cable, 2 m to Wall Power Supply Included	1	O	1	O
	PA02710403,					
	~ OR ~ PA02710513A					
Customer Display	PA03270103A	Customer Display, Serial Cable, 4' and DC Cable, 8' to 115 VAC Wall Power Supply included	1	S	1	S
	PA03270400					
PIN Pad with Card Reader	PA0411000XXX	PIN Pad with Card Reader, 9' RS-232 Cables and Power Supply with 6' DC Cable included	1	S	1	S
	PA0412000XXX					
	PA0420000XXXX					
	PA0421100XXX					
PIN Pad Pedestal	M14572K001	PIN Pad Pedestal, iSC250	1	O	1	O
	M14572K003	PIN Pad Pedestal MX915 (New Installation)				
	M01627B011	PIN Pad Pedestal MX915 (Replacing an iSC250)				
USB/Serial Converter	M01700B104B	USB to RS-232 Converter, Single Port	1 - 2	O	1 - 2	O

## Components Shipped with Minitowers

The following table contains a complete list of Passport components packed in the minitowers:

Part Number	Description	CWS	Combined CWS/MWS	Standalone MWS
Q11121-07	Power Strips	1	1	1
Q11121-10	Power Strips	0	1	0
Q13180-20B	Gender Mender at USB Converter, Bag of 5, Server [Environmental Management Console (EMC), Price Sign, Car Wash, GSM, and Spare]	0	1	1
Q13850-06	LAN Patch Cable, 6' [2-PSXX (LAN Wall Outlet and Patch Panel to Router) and 2-Satellite (LAN Wall Outlet and Patch Panel)]	1	2	2
Q13850-C06	LAN Crossover Patch Cable, 6'	0	1	1
M02964A001	Label Sheet, Site Peripheral Marking	0	1	1

## Appendix: Procedure to Change POSIFLEX Monitor (LM-3110E) Resolution Setting

To change the resolution setting, proceed as follows:

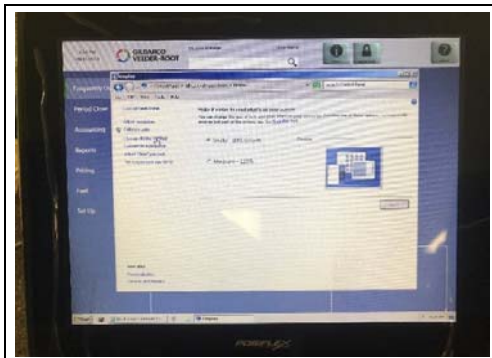
- 1 Connect the power cable and power up the monitor. From the Control Panel, navigate to the **Display** tab (see [Figure 1](#)).

**Figure 1: Connecting Power Cable and Navigating to Display Tab**



- 2 Select **Change display settings** (see [Figure 2](#)).

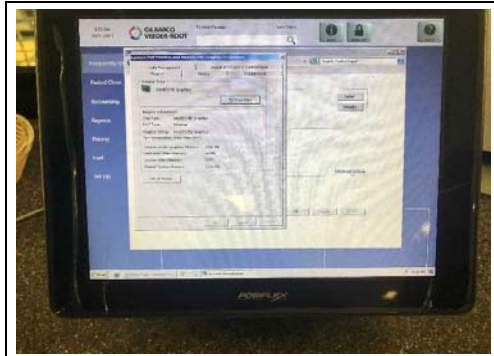
**Figure 2: Selecting Change Display Settings**





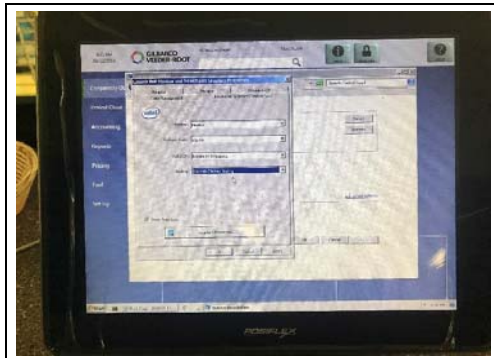
- 3 Select the **Advanced** tab. A new window with multiple tabs open (see [Figure 3](#)).

**Figure 3: Selecting Advanced Tab**



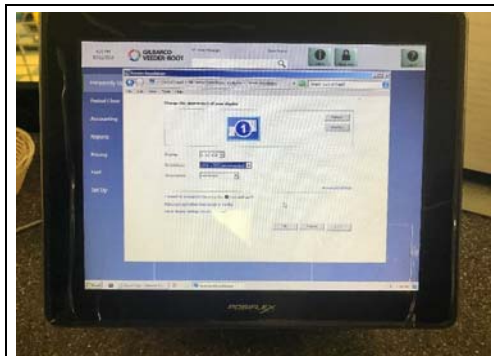
- 4 Navigate to the **Intel® HD Graphics Control Panel** tab. Set values as shown in figure and click **Apply** (see [Figure 4](#)).

**Figure 4: Setting Display Values**



- 5 Click **OK** (see [Figure 5](#)).

**Figure 5: Display Resolution Applied**



The resolution setting procedure is now complete.

*EMC™, Tank Monitor™, and Passport™ are trademarks of Gilbarco Inc. Gilbarco® is a registered trademark of Gilbarco Inc. GOLD<sup>SM</sup> is a service mark of Gilbarco Inc.*

*All product names, logos, and brands are the property of their respective owners and are for identification purposes only. Use of these names, logos, and brands does not imply endorsement.*



© 2020 Gilbarco Inc.  
7300 West Friendly Avenue · Post Office Box 22087  
Greensboro, North Carolina 27420  
Phone (336) 547-5000 · <http://www.gilbarco.com> · Printed in the USA  
MDE-3839Q Passport™ System Installation Addendum · December 2020