

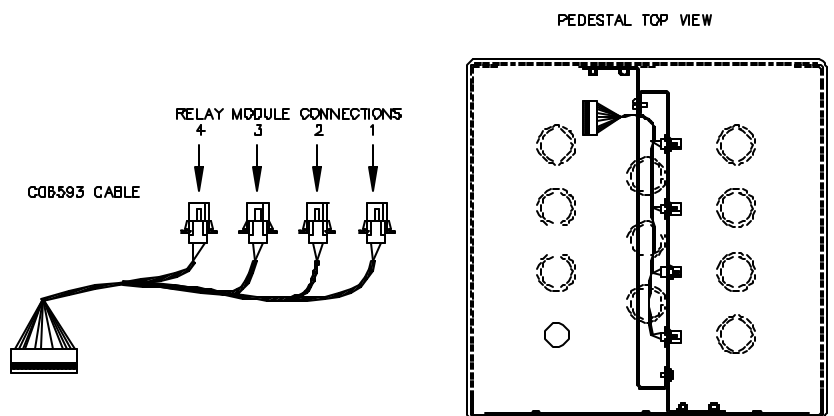
INSTALLING AN ISLANDER 4-HOSE PEDESTAL PUMP CONTROL UNIT

This C06653 kit contains all the hardware necessary to install a 4-hose pedestal pump control unit into an Islander pedestal. This kit includes:

Item	P/N	Description	Item	P/N	Description
1	C06600	Cage Assy., 3 Slot PCU Card	10	C08237	Connector, 12-position TB/PG
2	C06591	Cable Assy., DC PWR Ped. PCU	11	C08528	Connector, 8-position TB/PG (Qty 2)
3	C06593	Cable Assy., 4 Relay Control	12	C04035	Screw, #6-32 x 1/4" (Qty 4)
4	C06567	Cable Assy., PCU Comm.	13	068843	Washer, #6 Locking
5	C04037	Screw, #8-32 x 3/8" (Qty 9)	14	C32731	Plate, Silk-Screened Escutcheon
6	C06594	Relay Module Assy. (Qty 4)	15	067126	Washer, #8 PLTD (Qty 3)
7	C02418	Decal, Nos. 1-2-3-4 White	16	068842	Washer, #8 Locking (Qty 9)
8	C05040	Power Supply Assy.	17	C02293	Decal, Nos. 1-2-3-4 Black
9	C06595	Cable Assy., AC P/S, Head	18	C06757	Surge Protector Assembly

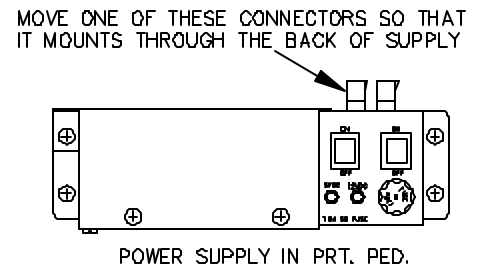
1. Switch off power to the Islander and disconnect all AC power to the unit. Remove the screws that secure the side covers on the pedestal and remove the covers.

2. Install the C06593 Relay Control Cable. This cable has four connectors in graduated lengths. On the left side of the pedestal, start with the longest of the four connectors and attach it to the rightmost square opening in the support bracket so that the pins are pointing away from the center of the pedestal. Repeat for all connectors from longest to shortest. Run the cable between the two support brackets to the card cage side. See drawing at right.



3. Install the C05040 power supply using four of the C04037 screws and 068842 locking washers. Do not tighten the corner screw that holds the power supply cover, as you will need to remove the cover to connect the cable to the card cage assembly.

If you are installing the power supply into a printer pedestal, one of the AC power connectors on the top of the supply must be moved so that it is mounted through the back of the supply. On the printer pedestal, there is a connector for the AC power coming from terminal block TB2. It must go through the opening in the mounting bracket and plug into the moved connector at the back of the power supply before the supply is installed.



4. Install the C06594 relay module assemblies. Connect the cables to the relay control cable installed in Step 2. Apply the numbers from the C02418 decal to the relay modules. Numbering is 1 2 3 4 from left to right.

5. Install the C06600 card cage assembly using three of the C04037 screws, 067126 washers, and 068842 locking washers. Connect the relay control cable 12-pin connector to P2 of the motherboard in the card cage assembly.

6. Install the C06591 DC power cable. Connect one end to P1 on the motherboard in the card cage assembly. Remove the power supply cover. Connect the other end of the cable to P1 of the power supply board. Replace power supply cover.

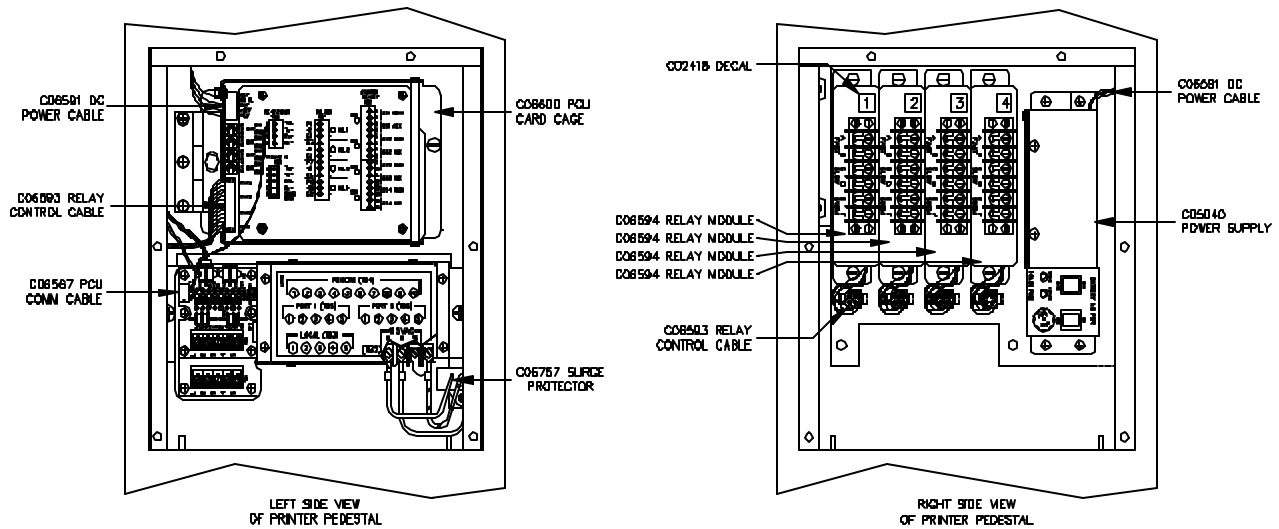
7. On the PCU CPU board, set the address switches to match to site's configuration. Set the jumpers on the Pump I/O board to match the pulsers being used. Refer to the *Islander II Installation Manual C35963*. Install the C32731 escutcheon plate using the C04035 screws and the 068843 washer. The washer goes on the screw closest to TBR connector. In a non-printer pedestal, apply the number 1 of the C02293 decal to the escutcheon plate.
8. Install the C06567 PCU comm. cable from TBK on the Pump I/O board to P3 on the RS485 Protection board. If the unit has 2 protection boards, the cable connects to the upper board.
9. On a printer pedestal, the C06595 cable is not needed and you can skip this step. On a printer pedestal, the C06595 AC power cable must be installed.

The existing AC power cable runs from TB2 to a connector near the AC power switch inside the Islander head (inside right partition). Disconnect the end located near the AC power switch and reconnect it to one of the connectors at the top of the PCU power supply.

Install the new C06595 cable by connecting one end to the other connector on the PCU power supply and the other end to the connector located near the AC power switch in the head (where you removed the old cable).

10. While facing the terminal block/bracket assembly, with TB2 on it, locate an unused captive nut in the sheet metal (several inches below and to the right). Install the C06757 surge protector using a C04037 screw and 068842 lockwasher. Terminate the green/yellow wire from the surge protector to Ground of TB2 and the black wires from the surge protector to Hot and Neutral on TB2.
11. For pump wiring to the Pump Control Unit, refer to the *Islander II Installation Manual C35963*. Once wiring is complete and verified, re-connect the AC power to the Islander. Switch on AC power to the Islander and PCU power supply. After wiring has been completed and tested, replace pedestal side covers.

Printer Pedestal



Non-Printer Pedestal

