

# Legacy™ Commercial Series Specifications

## Available Models and Weights

Model Number	Description	Weight
JC10	1-Grade, 1-Hose, Standard Flow Pump	
JC11	1-Grade, 2-Hose, Standard Flow Pump	
JC12	2-Grade, 2-Hose, Standard Flow Pump	460lbs./209kgs.
JC13	1-Grade, 1-Hose, High Flow Pump	
JC15	2-Grade, 2-Hose, High Flow Pump	
JCA0	1-Grade, 1-Hose, Standard Flow Dispenser	
JCA1	1-Grade, 2-Hose, Standard Flow Dispenser	
JCA2	2-Grade, 2-Hose, Standard Flow Dispenser	310lbs./141kgs.
JCA3	1-Grade, 1-Hose, High Flow Dispenser	
JCA4	1-Grade, 2-Hose, High Flow Dispenser	
JCA5	2-Grade, 2-Hose, High Flow Dispenser	

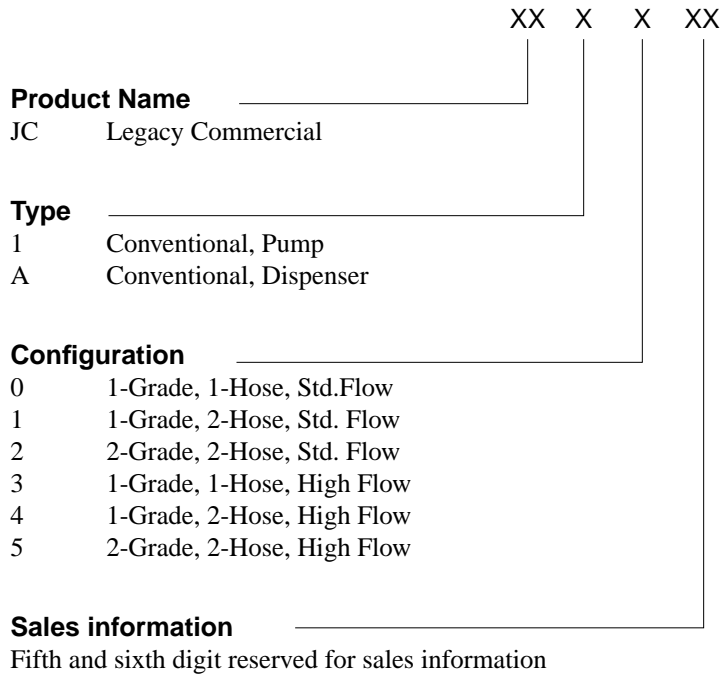
## Load Table

Field Wiring Diagram (Attached)	Voltage Rating
FE-322	110/115/120VAC
FE-323	380VAC Three Phase
FE-324	220/230/240VAC

## Operating Environment

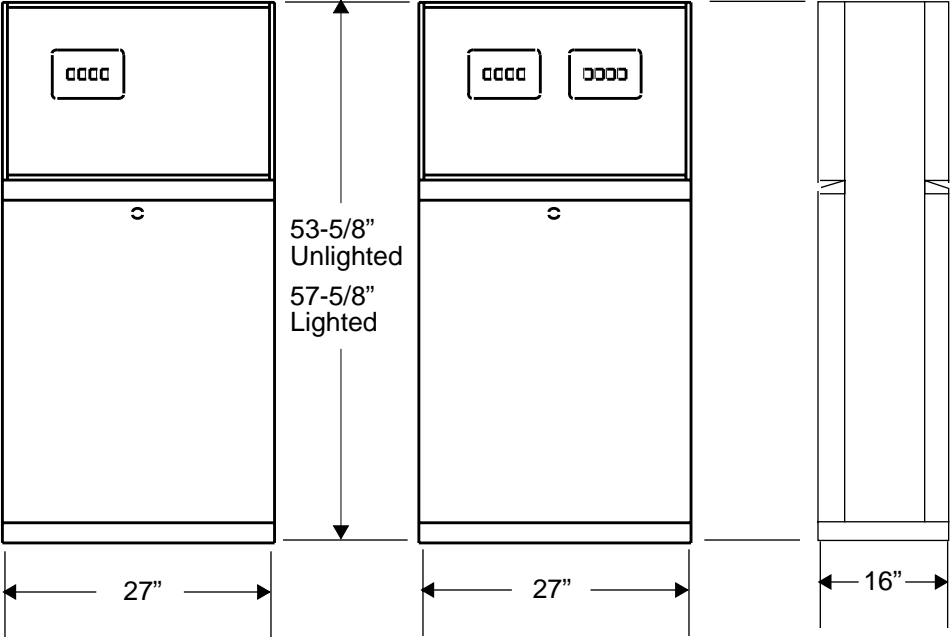
Environment	Range
Relative humidity	20% to 95% Non-condensing
Minimum outside ambient temperature	-22°F (-30°C)
Maximum outside ambient temperature	131°F (55°C)

## Model Number Breakdown



Options	Order Entry Items
Mechanical Reset	Lower Doors
Lighted	Dial Faces
Pulsers	Uppers
Hand Drive	Filter
Spring Retriever	Hoses & Hose Clamps
Flexmast Mount	Breakaways
Visible Discharge Indicator	Nozzles
Hose Hook	Decals
	Brands

Legacy Commercial - Elevation



# Legacy Commercial Pump and Dispenser - Foundation Diagrams

(Models JC10, JC11, JC12, JC13, JC15, JCA0, JCA1, JCA2, JCA3, JCA4, JCA5)

## PRODUCT INLET LOCATIONS

## NOTES:

- 1 ▷ FOR A DOUBLE-POPPET SHEAR VALVE MAKE INLET UNION HEIGHT AT 2-7/16" (+0, -1/4).
- 2 ▷ WHEN USING A DOUBLE-POPPET SHEAR VALVE USE INLET TUBE KIT K94294 (1G1H OR 2G2H) OR K94295 (1G2H), WHICH WILL POSITION THE UNION AT 2-7/16" INSTEAD OF 1-9/16".

## PUMPS

A	INLET FROM TANK
B	NOT USED
C	NOT USED
D	NOT USED
POSITION	FUNCTION

1-GRADE, 1-HOSE - JC10, JC13, JH10, JH13, JM10, JM13

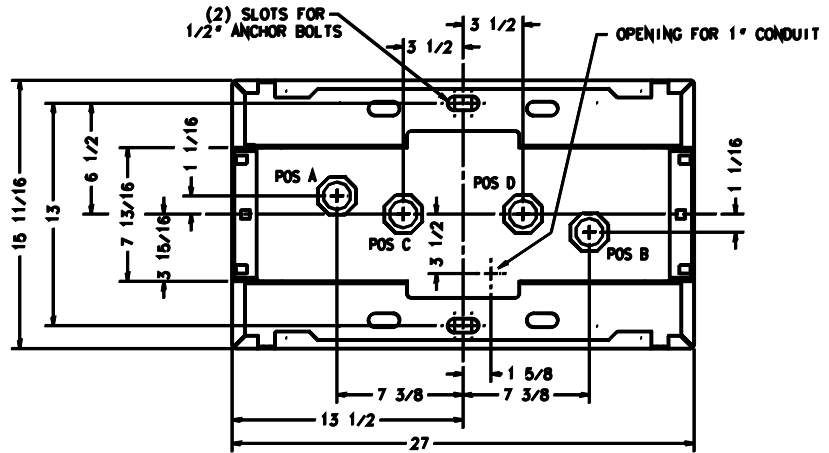
A	INLET FROM TANK
B	NOT USED
C	NOT USED
D	NOT USED
POSITION	FUNCTION

1-GRADE, 2-HOSE - JC11, JH11, JM11

A	INLET FROM TANK
B	INLET FROM TANK
C	NOT USED
D	NOT USED
POSITION	FUNCTION

2-GRADE, 2-HOSE - JC12, JC15, JH12, JH15, JM12, JM15

## TOP VIEW



## DISPENSERS

A	NOT USED
B	NOT USED
C	INLET FROM TANK
D	NOT USED
POSITION	FUNCTION

1-GRADE, 1-HOSE - JCA0, JCA3, JHA0, JHA3, JMA0, JMA3

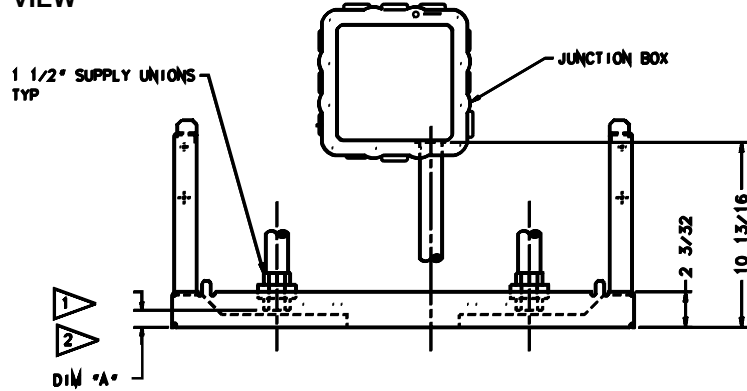
A	NOT USED
B	NOT USED
C	INLET FROM TANK
D	NOT USED
POSITION	FUNCTION

1-GRADE, 2-HOSE - JCA1, JCA4, JHA1, JHA4, JMA1, JMA4

A	NOT USED
B	NOT USED
C	INLET FROM TANK
D	INLET FROM TANK
POSITION	FUNCTION

2-GRADE, 2-HOSE - JCA2, JCA5, JHA2, JHA5, JMA2, JMA5

## FRONT VIEW



DIMENSION "A":  
 FOR PUMPS 1" +0/-1/4"  
 FOR DISPENSERS 1-9/16" +0/-1/4"







