

Dimension® Series

One, Two, Three and Four Grade Dispensers

Model Numbers

D00	Dimension One-Grade (One-Sided)
D01	Dimension One-Grade (Two-Sided)
D02	Dimension Two-Grade (One-Sided)
D03	Dimension Two-Grade (Two-Sided)
D04	Dimension Three-Grade (One-Sided)
D05	Dimension Three-Grade (Two-Sided)
D0E	Dimension Four-Grade (One-Sided)
D0G	Dimension Four-Grade (Two-Sided)

Load Table

See attached wiring diagrams:	
FE-317	Dimension Series Dispensers 120VAC
FE-318	Dimension Series Dispensers 240VAC

Operating Environment

Relative Humidity	20% to 95% non-condensing
Minimum Outside Ambient Temperature	-22°F (-30°C)
Maximum Outside Ambient Temperature	131°F (55°C)

Performance Requirements

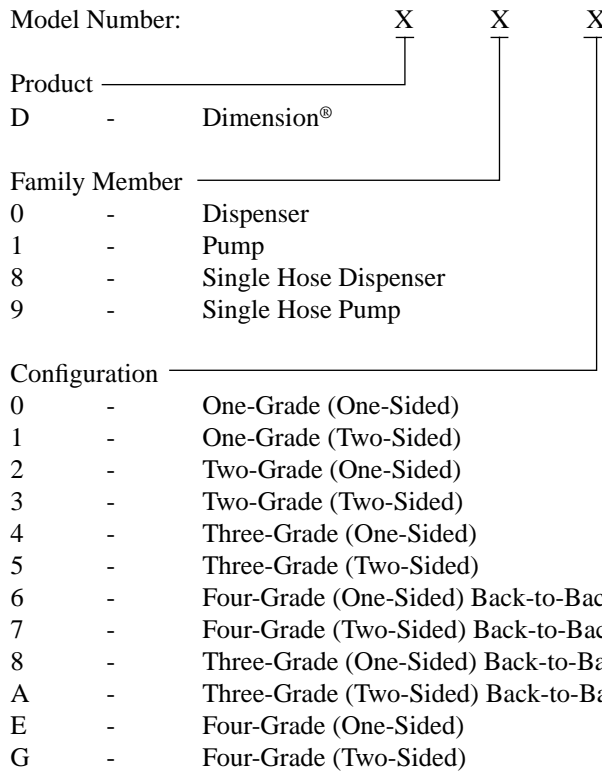
Minimum Delivery Rate*	10 gpm @ 26 psi inlet pressure (45 lpm @ 76kg/cm ² inlet pressure)
Meter Accuracy	± 0.25% from 1.5 to 15 gpm (5.7 to 57 lpm)

* Actual flow rates will depend on your specific installation and accessories used.

Weights

One-Grade	900 est. pounds/410 est. kilograms
Two-Grade	1,100 est. pounds/500 est. kilograms
Three-Grade	1,225 est. pounds/560 est. kilograms
Four-Grade	1,650 est. pounds/750 est. kilograms

Model Number Breakdown



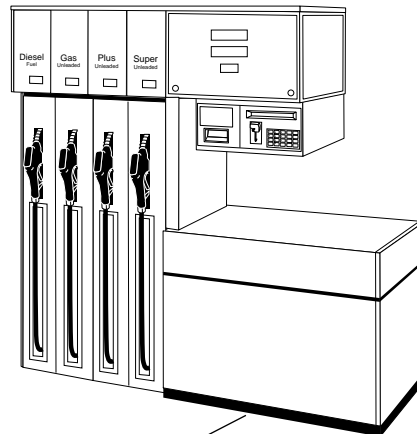
Options:

- Push-To-Start Nozzle
- Lever Activated Nozzle
- CRIND™ *
- Customer Programmable Preset *
- Cash/Credit
- Mechanical Totalizers
- Gallon Totalizers
- Metric Totalizers

* Cannot have both CRIND and Customer Programmable Preset

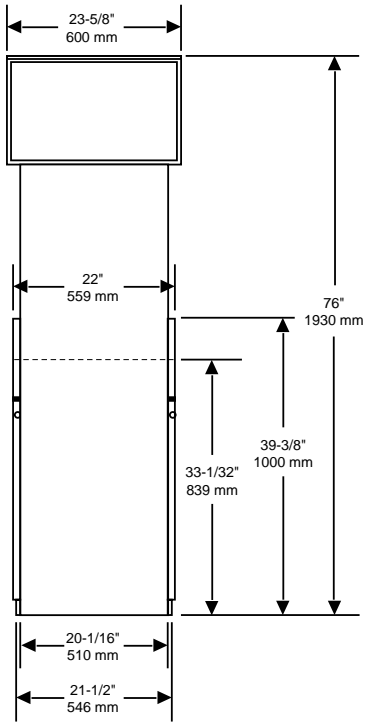
Serial Number/Model Number Plate Location

Standard

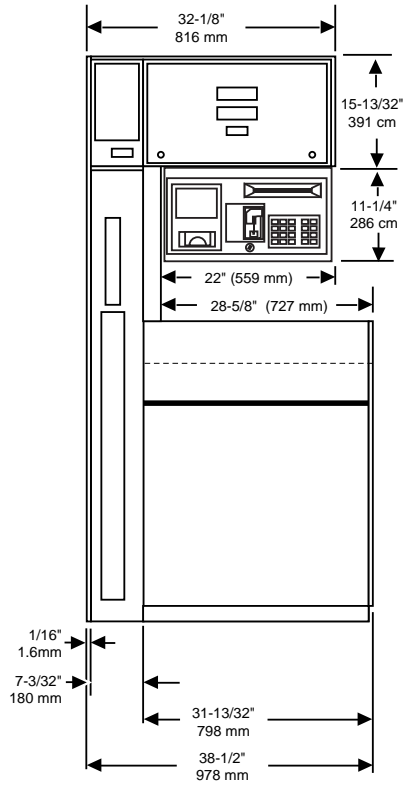


Elevation - Standard Configuration

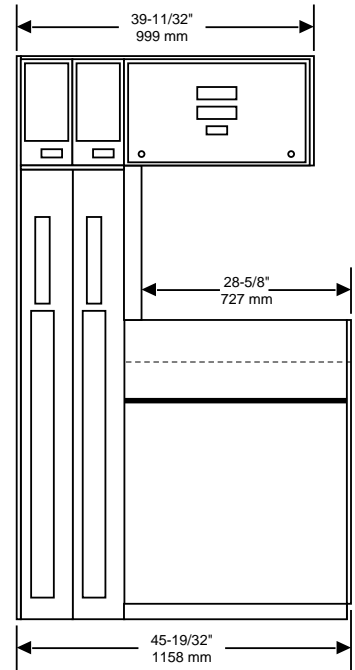
Side View



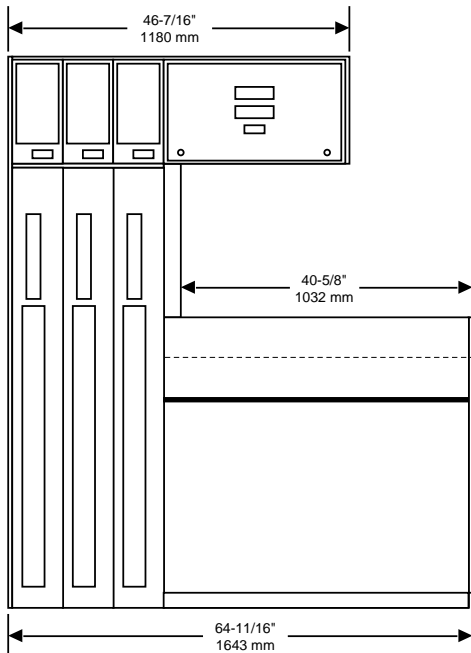
One-Grade Dispenser



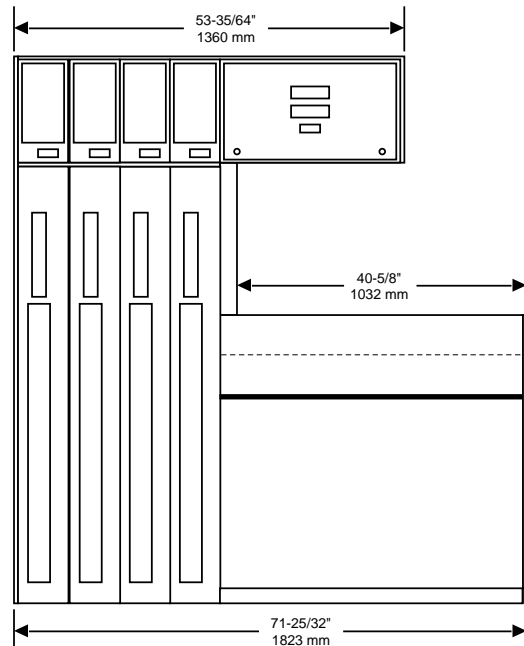
Two-Grade Dispenser



Three-Grade Dispenser

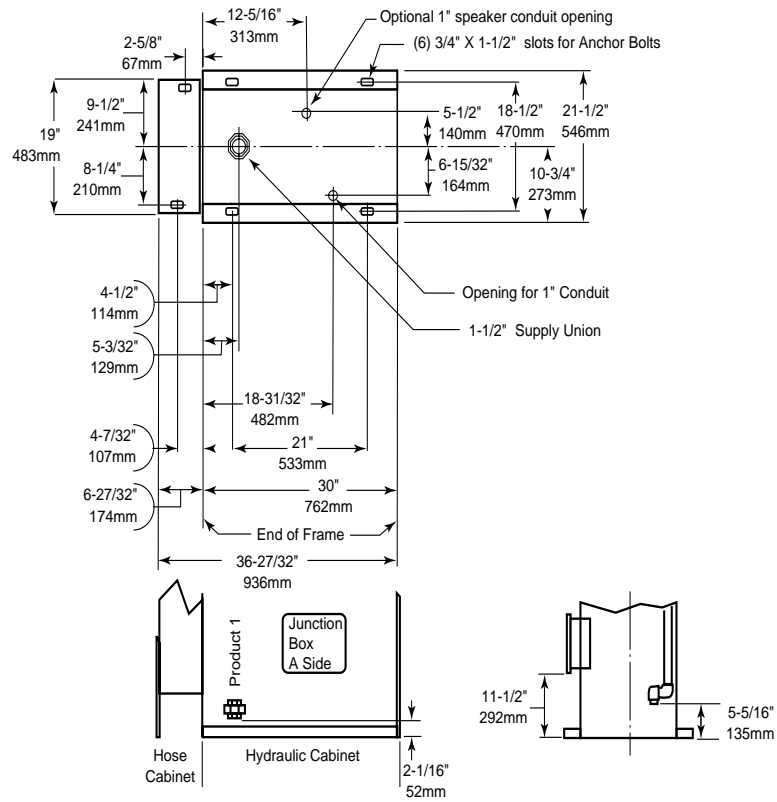


Four-Grade Dispenser

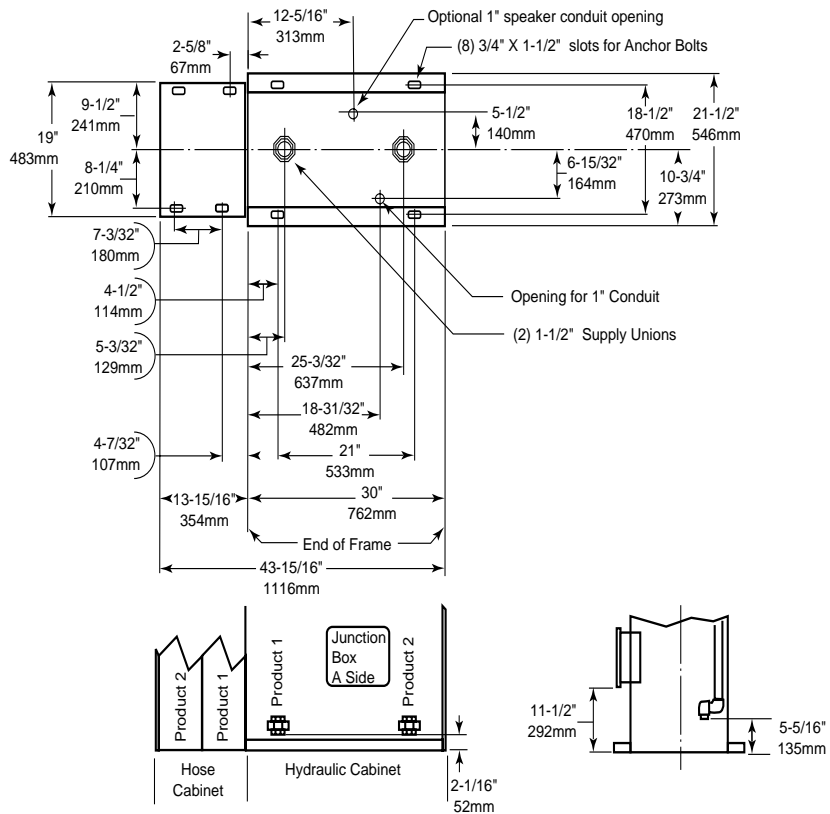


Footprint - Standard Configuration

One-Grade

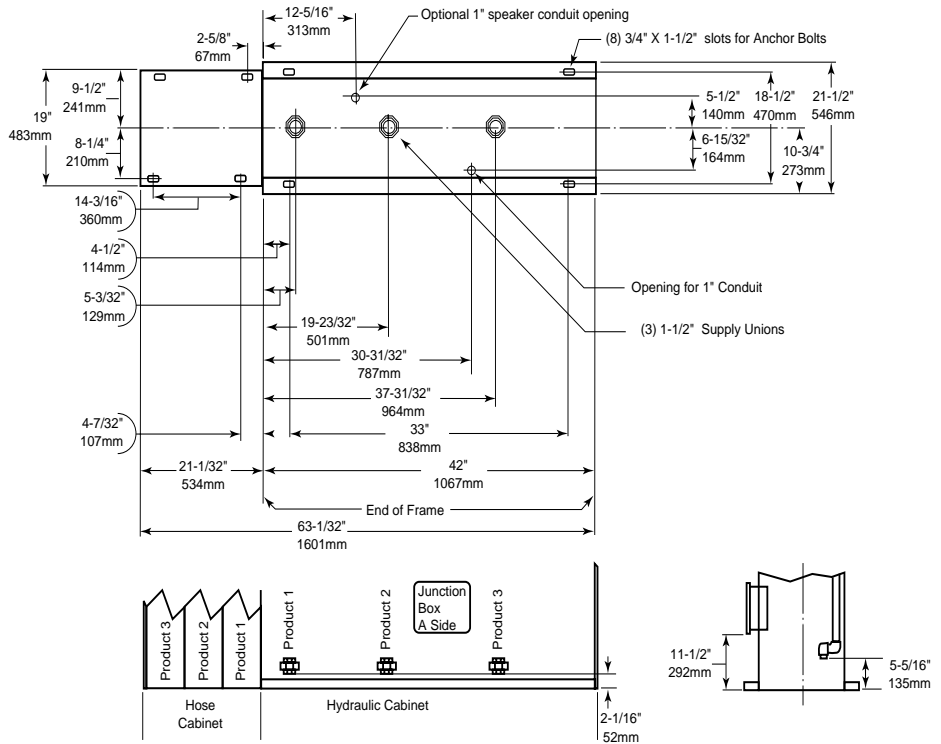


Two-Grade



Standard Configuration

Three-Grade



Four-Grade

