

684 Commercial Pumps and Dispensers

Model No.	Description
684-R/684-1	Single One-Product Standard Gallonage Pump
684-S/684-5	Single One-Product High Gallonage Pump
684-3	Single One-Product High Gallonage Dispenser

Load Table

See attached wiring diagrams:

FE-294	Dispensers with Manual Reset 120VAC
FE-295	Dispensers with Manual Reset 240VAC
FE-300	Single & Dual 2-Product Pumps with Manual Reset 120VAC
FE-301	Single & Dual 2-Product Pumps with Manual Reset 240VAC

Operating Environment

Relative Humidity.....	20% to 95% non-condensing
Minimum Outside Ambient Temperature.....	-22°F (-30°C)
Maximum Outside Ambient Temperature	104°F (40°C)

Performance Requirements

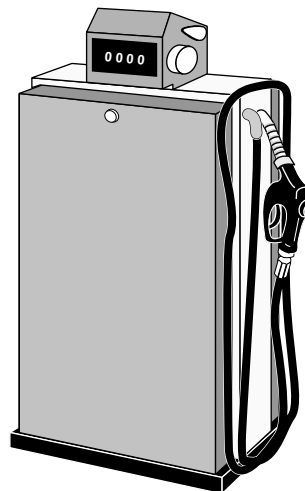
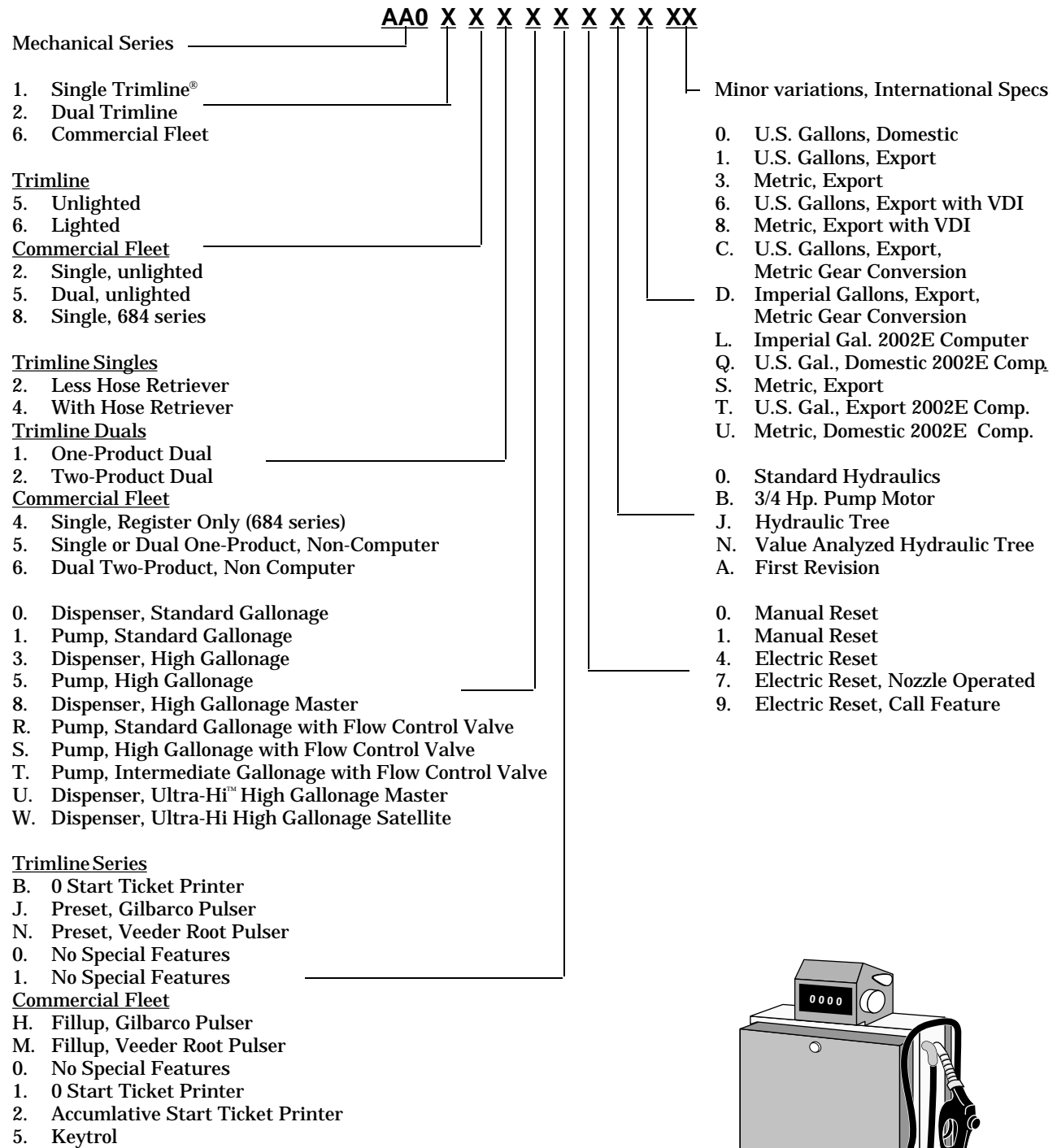
Minimum Delivery Rate (Std. Gal.).....	10 gpm @ 35 psi inlet pressure	
.....	(38 lpm @ 102 kg/cm ² inlet pressure)	
Minimum Delivery Rate (High Gal.)	23 gpm @ 35 psi inlet pressure	
.....	(87 lpm @ 102 kg/cm ² inlet pressure)	
Meter Accuracy	± .25% from 1.5 to 15 gpm (5.7 to 57 lpm)	

Weights

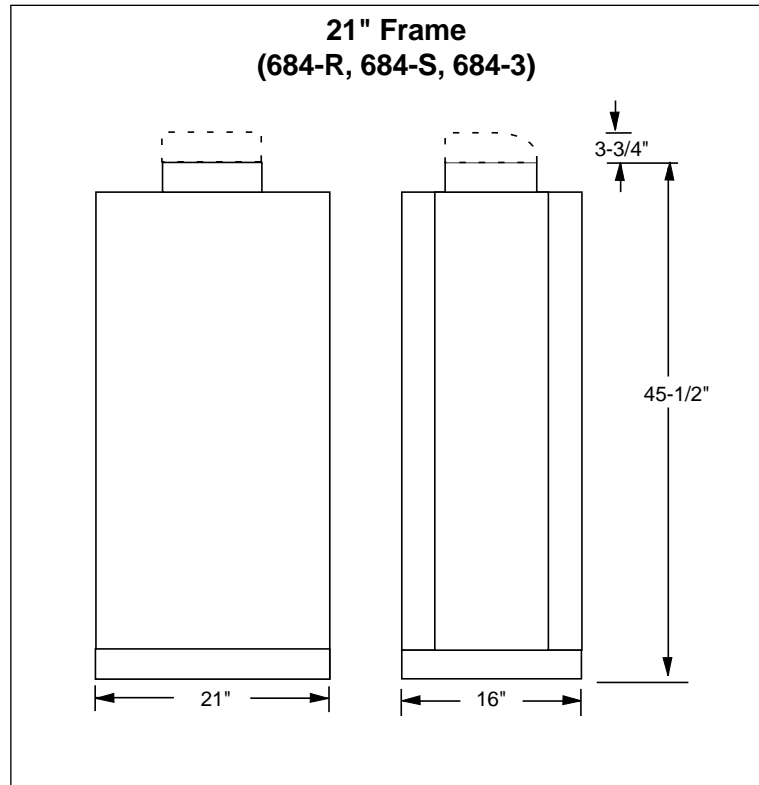
Single One-Product

Standard Gallonage Pump Weight.....	300 pounds/135 kilograms
High Gallonage Pump Weight.....	300 pounds/135 kilograms
High Gallonage Dispenser Weight	225 pounds/102 kilograms

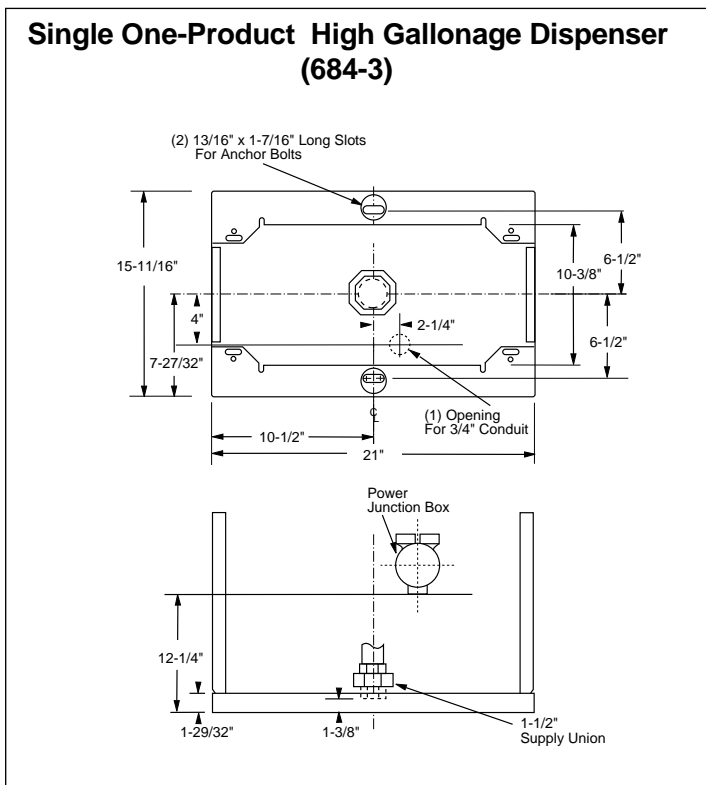
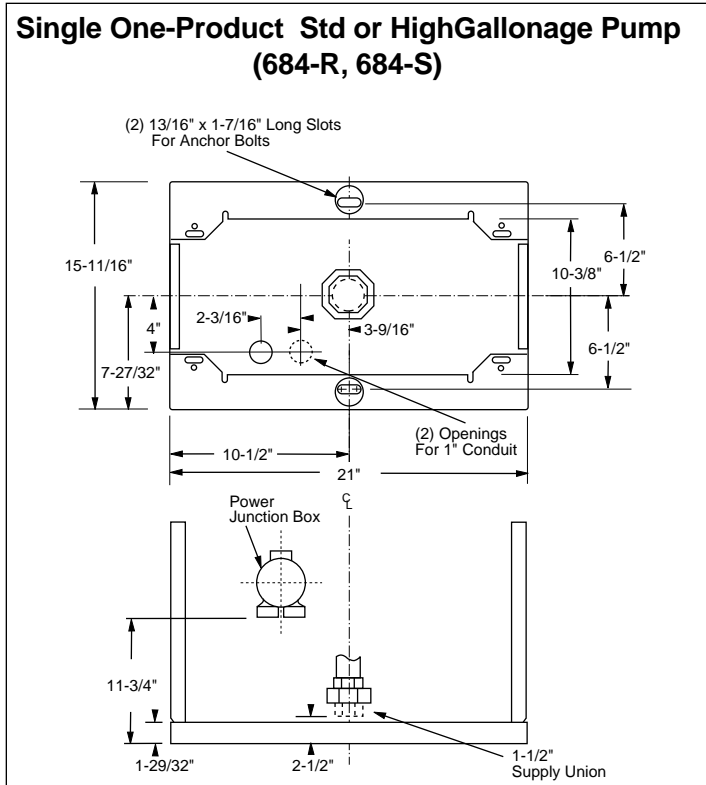
Model Number Breakdown



Commercial 684 Series



Commercial 684 Series





Warning!



Dangerous environment.
Highly flammable and explosive fuels are present.
Failure to observe all safety precautions could result in serious injury or death.
Observe all safety precautions as outlined in Gilbarco's manuals.

Field Wiring Installation Notes

- Install a single EMERGENCY POWER CUTOFF control to remove AC power from site dispensing equipment and STP's simultaneously.
(The control is an additional safety feature, and not a substitute for NEC/NFPA30A circuit breaker requirements.)
 - Label the EMERGENCY POWER CUTOFF switch and instruct owner to keep area clear of obstacles.
- Install a system Earth Ground.
- Install power breakers to each circuit leading to the dispenser and STP or self-contained pump motors. They must be capable of simultaneously disconnecting hot and neutral conductors.
- The junction boxes only show field wiring connections . Cap all unused wires. Local and National Electrical Codes may apply.
- Use the same phase of electrical power for all dispensers.
- Use 1" rigid metallic conduit to run wires. Install per NEC for hazardous locations.
- Wires- 14AWG. Motor Wiring - min. 12AWG
System ground - wire is 12AWG.
Power loading and distance run may require larger wire size.

Note: In Canada switching neutral is contrary to the Canadian electrical code, reference part 1, rule 14-014.