

PHASE-TWO™  
Mag Plus Probe Float Kit  
For Phase Separation Detection

**Assembly Guide**

# Notice

---

Veeder-Root makes no warranty of any kind with regard to this publication, including, but not limited to, the implied warranties of merchantability and fitness for a particular purpose.

Veeder-Root shall not be liable for errors contained herein or for incidental or consequential damages in connection with the furnishing, performance, or use of this publication.

Veeder-Root reserves the right to change system options or features, or the information contained in this publication.

This publication contains proprietary information which is protected by copyright. All rights reserved. No part of this publication may be photocopied, reproduced, or translated to another language without the prior written consent of Veeder-Root.

Contact TLS Systems Technical Support for additional troubleshooting information at 800-323-1799.

## **DAMAGE CLAIMS / LOST EQUIPMENT**

Thoroughly examine all components and units as soon as they are received. If any cartons are damaged or missing, write a complete and detailed description of the damage or shortage on the face of the freight bill. The carrier's agent must verify the inspection and sign the description. Refuse only the damaged product, not the entire shipment.

Veeder-Root must be notified of any damages and/or shortages within 30 days of receipt of the shipment, as stated in our Terms and Conditions.

## **VEEDER-ROOT'S PREFERRED CARRIER**

1. Contact Veeder-Root Customer Service at 800-873-3313 with the specific part numbers and quantities that were missing or received damaged.
2. Fax signed Bill of Lading (BOL) to Veeder-Root Customer Service at 800-234-5350.
3. Veeder-Root will file the claim with the carrier and replace the damaged/missing product at no charge to the customer. Customer Service will work with production facility to have the replacement product shipped as soon as possible.

## **CUSTOMER'S PREFERRED CARRIER**

1. It is the customer's responsibility to file a claim with their carrier.
2. Customer may submit a replacement purchase order. Customer is responsible for all charges and freight associated with replacement order. Customer Service will work with production facility to have the replacement product shipped as soon as possible.
3. If "lost" equipment is delivered at a later date and is not needed, Veeder-Root will allow a Return to Stock without a restocking fee.
4. Veeder-Root will NOT be responsible for any compensation when a customer chooses their own carrier.

## **RETURN SHIPPING**

For the parts return procedure, please follow the appropriate instructions in the "General Returned Goods Policy" pages in the "Policies and Literature" section of the Veeder-Root **North American Environmental Products** price list. Veeder-Root will not accept any return product without a Return Goods Authorization (RGA) number clearly printed on the outside of the package.

**Introduction**

Important Requirements for Phase-Two Float Kit ..... 1  
Contractor Certification Requirements ..... 1  
Related Manuals ..... 2  
Safety Precautions ..... 3  
Safety Symbols ..... 3

**Phase-Two Float Kit Contents** ..... 4

**Assembling Kit Components onto Probe**

Attaching Probe Canister Stabilizer Rings (4-Inch Risers) ..... 5  
Assembling Floats onto Probe Shaft ..... 6  
Installing Probe in the Tank ..... 7  
    New Installations ..... 7  
    Retrofit Instructions..... 7

**Figures**

Figure 1. Identifying Phase-Two Float Kit Components ..... 4  
Figure 2. Installing Probe Canister Spacer Rings..... 5  
Figure 3. Example installation of Probe Floats and White Boot ..... 6

**Tables**

Table 1. Phase-two Float Kit (With Seal Kit) - P/N 886100-0X0 ..... 4



## Introduction

This manual describes how to identify and assemble the components of the Mag Plus Probe Phase-Two Float Kit on either a new Mag Plus probe or an existing Mag Plus probe (for retrofit restrictions, see Note 2 in the "Important Requirements for Phase-Two Float Kit" paragraph below).

Instructions are included for assembling the Phase-Two Float Kit components onto the probe's shaft, attaching spacer rings to the probe's canister, and attaching the probe's cable to the canister.

For guidelines on site preparation, instructions on installing the probe into a tank, and instructions on connecting wiring from the probe to the console, you must refer to the appropriate Veeder-Root Site Preparation and Installation manual. For Setup information, you must refer to the appropriate Veeder-Root Setup manual.

### Important Requirements for Phase-Two Float Kit

---

- 1. The Phase-Two Float Kit requires V30B software or later in the TLS-350 and V3A software or later in the TLS-450.**
- 2. You can retrofit existing Mag Plus probes with the Phase-Two Float Kit under the following conditions:**
  - Only probes having Form Numbers 8463xx-1xx, -2xx, or -3xx (Mag7, Mag8 or Mag9) are compatible with the Phase-Two Float Kit.**
  - Existing canister spacers, floats and boot must be discarded.**
- 3. The float selection entered during in-tank setup must be as follows:**

Console	Probe Float Setup Location	Selection
TLS-350	Mode: Setup, Function: In-Tank Setup, Step: Float Size	4.0 IN. PS
TLS-450	Setup button, Devices button, Probes tab, Float Type field	4.0 IN Phase Separation

- 4. The minimum tank water level measured by the Mag Plus Probe with Phase-Two Float Kit is 0.38 of an inch.**

### Contractor Certification Requirements

---

Veeder-Root requires the following minimum training certifications for contractors who will install and setup the equipment discussed in this manual:

**Installer (Level 1) Certification:** Contractors holding valid Installer Certification are approved to perform wiring and conduit routing; equipment mounting; probe, sensor and carbon canister vapor polisher installation; wireless equipment installation; tank and line preparation; and line leak detector installation.

**ATG Technician (Level 2/3 or 4) Certification:** Contractors holding valid ATG Technician Certifications are approved to perform installation checkout, startup, programming and operations training, system tests, troubleshooting and servicing for all Veeder-Root Series Tank Monitoring Systems, including Line Leak Detection. In addition, Contractors with the following sub-certification designations are approved to perform installation checkout, startup, programming, system tests, troubleshooting, service techniques and operations training on the designated system.

- Wireless 2
- Tall Tank

**VR Vapor Products Certification:** Contractors holding a certification with the following designations are approved to perform installation checkout, startup, programming, system tests, troubleshooting, service techniques and operations training on the designated system.

- ISD – In Station Diagnostics
- PMC – Pressure Management Control
- CCVP - Veeder-Root Vapor Polisher
- Wireless – ISD/PMC Wireless
- A current Veeder-Root Technician Certification is a prerequisite for the VR Vapor Products course.

**Warranty Registrations** may only be submitted by selected Distributors.

## Related Manuals

---

After assembly, consult the appropriate Site Prep and Installation Manual for your console prior to installing the probe in the tank:

- 576013-879 TLS-3XX Site Prep and Installation Manual
- 576013-623 TLS-3XX Setup Manual
- 577013-879 TLS-4XX Site Prep and Installation Manual

## Safety Precautions

Retain and follow all product safety and operating instructions. Observe all warnings on the product and in the operating instructions.



**FAILURE TO COMPLY WITH THE FOLLOWING WARNINGS AND SAFETY PRECAUTIONS COULD CAUSE DAMAGE TO PROPERTY, ENVIRONMENT, RESULTING IN SERIOUS INJURY OR DEATH.**

Heed service markings: Opening or removing the console cover may expose you to electric shock. Servicing of Veeder-Root equipment must be done by Veeder-Root authorized service contractors.

Use product with approved equipment. This product should be used only with Veeder-Root components.

## Safety Symbols

The following safety symbols may be used throughout this manual to alert you to important safety hazards and precautions.

 <p><b>EXPLOSIVE</b> Fuels and their vapors are extremely explosive if ignited.</p>	 <p><b>FLAMMABLE</b> Fuels and their vapors are extremely flammable.</p>
 <p><b>ELECTRICITY</b> High voltage exists in, and is supplied to, the device. A potential shock hazard exists.</p>	 <p><b>TURN POWER OFF</b> Live power to a device creates a potential shock hazard. Turn Off power to the device and associated accessories when servicing the unit.</p>
 <p><b>USE SAFETY BARRICADES</b> Unauthorized people or vehicles in the work area are dangerous. Always use safety cones or barricades, safety tape, and your vehicle to block the work area.</p>	 <p><b>NO PEOPLE IN THE AREA</b> Unauthorized people in the area during service can create a potential for personal injury to you and them.</p>
 <p><b>WEAR EYE PROTECTION</b> Wear eye protection when working with pressurized fuel lines or epoxy sealant to avoid possible eye injury.</p>	 <p><b>GLOVES</b> Wear gloves to protect hands from irritation or injury.</p>
 <p><b>WARNING</b> Heed the adjacent instructions to avoid damage to equipment, property, environment or personal injury.</p>	 <p><b>READ ALL RELATED MANUALS</b> Knowledge of all related procedures before you begin work is important. Read and understand all manuals thoroughly. If you do not understand a procedure, ask someone who does.</p>

# Phase-Two Float Kit Contents

The Mag Plus Probe Phase-Two Float Kit contents are listed in Table 1 and the kit components can be identified in Figure 1.

**Table 1. Phase-two Float Kit (With Seal Kit) - P/N 886100-0X0**

Qty.	Description	Part Number
1	Cable	330272-00X
1	Gasoline Float - 4 inch	331719-001
1	Phase-Two Water Detector	333168-001
1	White Boot	333246-001
2	Canister Spacers	331555-001
1	Cable Seal Kit	330020-067

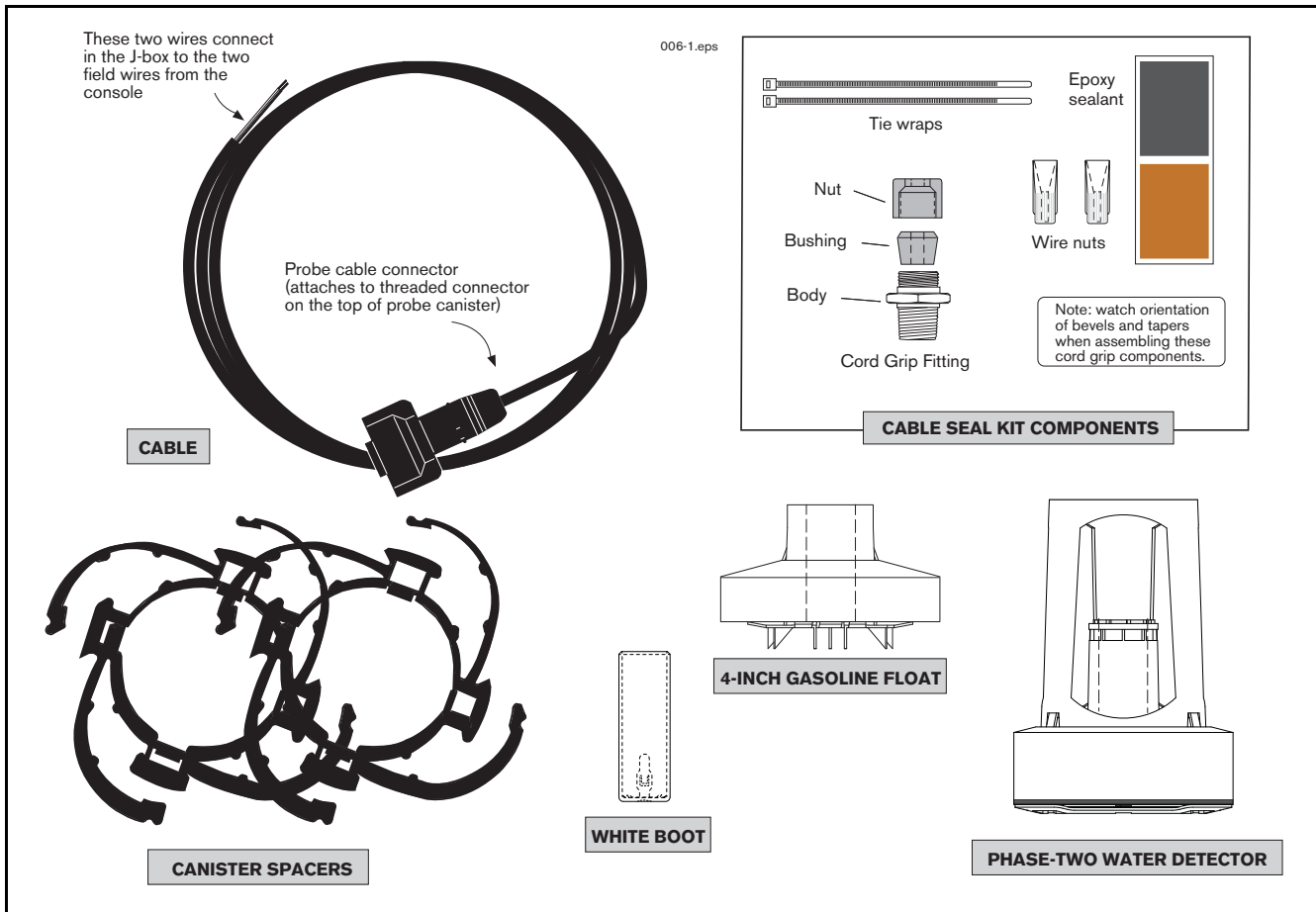


Figure 1. Identifying Phase-Two Float Kit Components



## Assembling Kit Components onto Probe

### Attaching Probe Canister Stabilizer Rings (4-Inch Risers)



1. Remove a new probe from its shipping container, or remove a probe to be retrofitted from its tank. Lay the probe on the surface in an area of the site protected from vehicle traffic. If you are retrofitting a probe, remove and discard the existing canister rings, floats and boot. ONLY the white boot is compatible with the Phase-Two Float Kit.
2. Open the Phase-Two Float Kit. Set the adjustable arms of the rings for a 4-inch riser (see Figure 2) as required. Install the two stabilizer rings onto the probe canister as shown in the figure. Note: you must slide the bottom ring up over the probe shaft and onto the lower end of the canister.

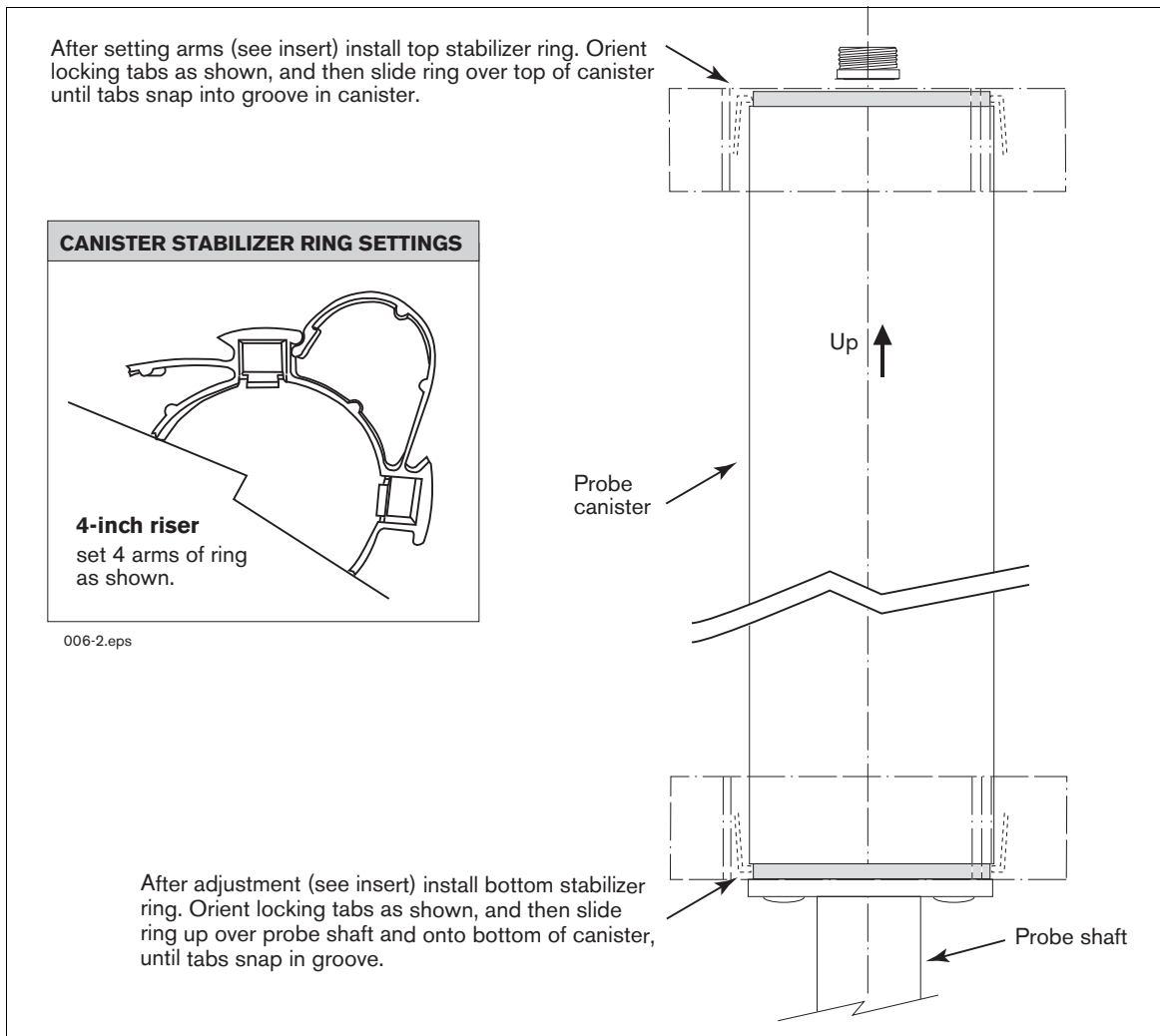


Figure 2. Installing Probe Canister Spacer Rings

## Assembling Floats onto Probe Shaft

The Gasoline Float, Phase-Two Water Detector and the White Boot must be assembled on the probe shaft in the exact sequence and orientation shown in Figure 3.

### IMPORTANT!

**Failure to push the boot as far as possible onto the probe shaft could cause the boot and float(s) to fall into the tank. The boot must be pushed on until it “locks” on the probe shaft.**

Handle the probe carefully. Striking or dropping the probe will result in loss of calibration and could cause permanent damage.

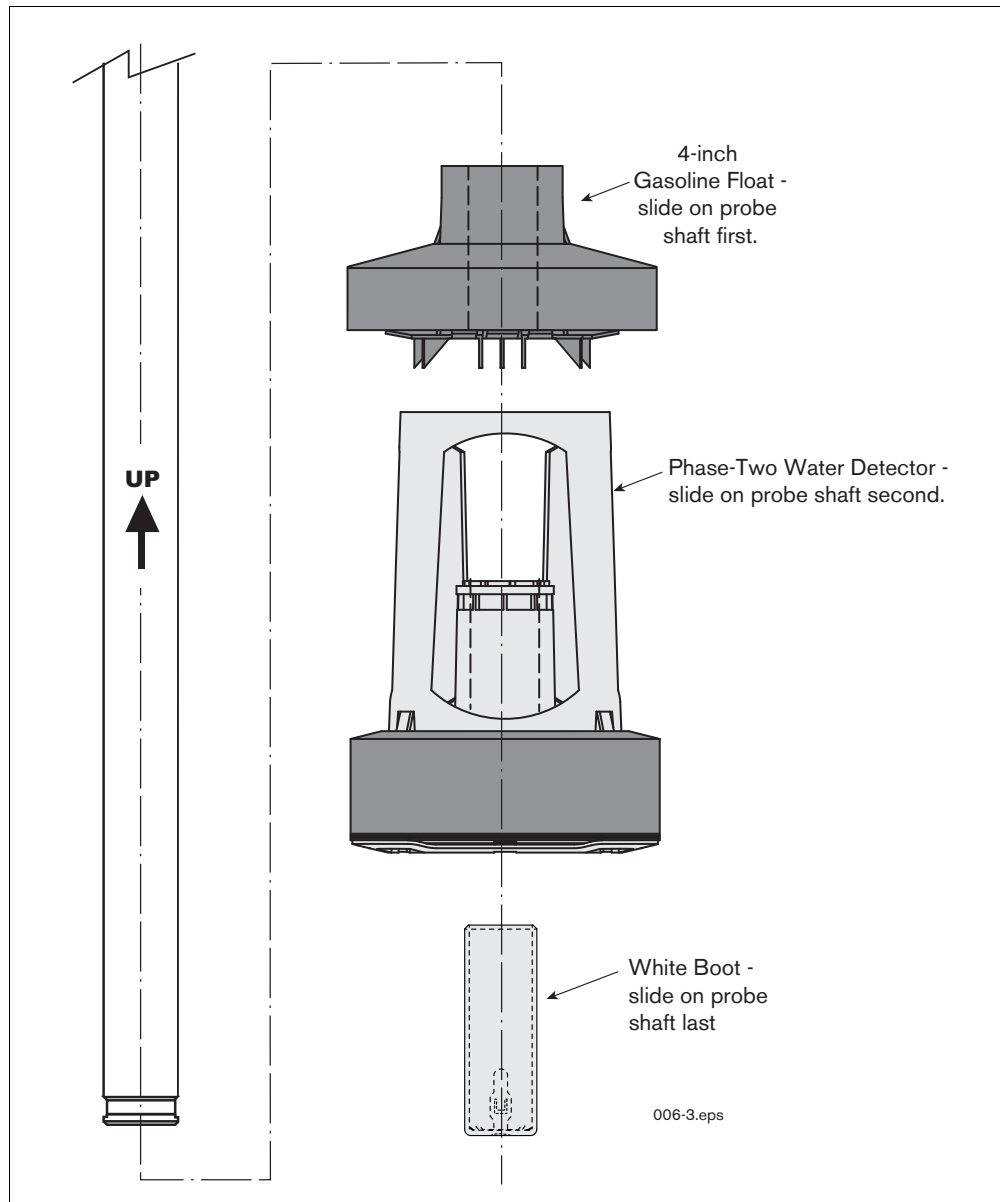


Figure 3. Example installation of Probe Floats and White Boot

## Installing Probe in the Tank

---



### NEW INSTALLATIONS

1. Insert the probe into the tank. Attach the cable connector to the threaded connector on top of the probe canister and tighten down the integral nut.
2. Save the remaining wiring kit components and refer to the console's Site Prep manual for instructions on connecting the probe cable to the field wiring from the console.
3. Refer to the TLS-3XX Setup manual or to the TLS-4XX console's Online help to program the float size selection in the console as per Note 3 in "Important Requirements for Phase-Two Float Kit" on page 1.

### RETROFIT INSTRUCTIONS

1. Insert the probe into the tank. Attach the existing cable connector to the threaded connector on top of the probe canister and tighten down the integral nut.
2. Refer to the TLS-3XX Setup manual or to the TLS-4XX console's Online help to reprogram the float size selection in the console as per Note 3 in "Important Requirements for Phase-Two Float Kit" on page 1.

