

# TLS2 Software Upgrade Instructions

## Parts Required

- V/R Kit number 330020-422
- #15 Torx screw driver

## Procedure

- 1** Turn off power to the TLS2 Console. Using the #15 Torx screwdriver, remove the upper and lower Torx screws from the console cover's right side. Swing the console cover open (to the left).
- 2** Locate the 3 system software chips U19, U22, and U25 (see Figure 1).

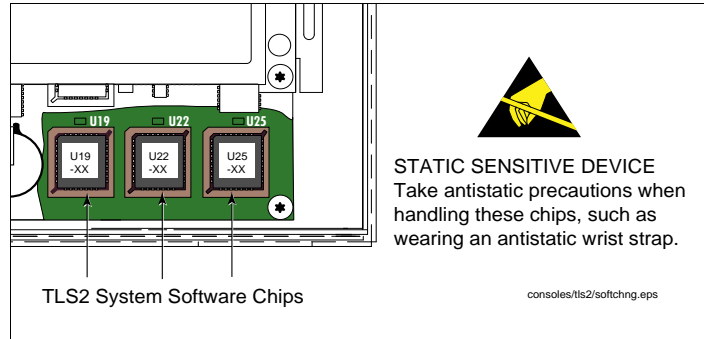


Figure 1 TLS2 System Software Chips

- 3** Following the instructions in Figure 2, remove U19, U22, and U25 from their sockets using the chip removal tool in the kit.

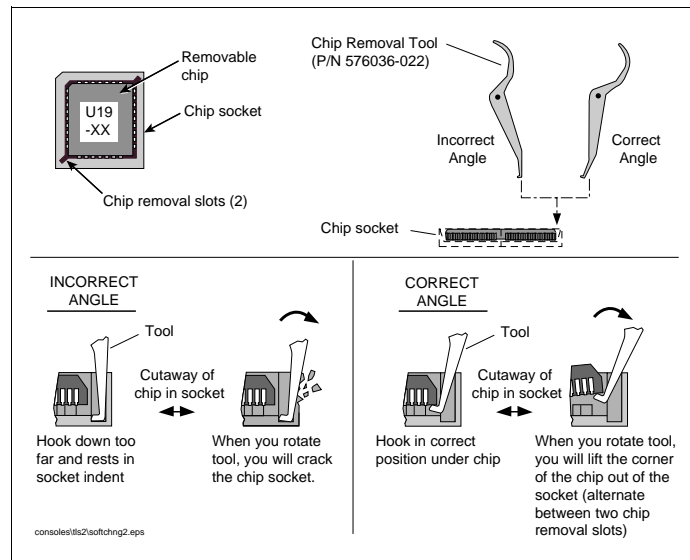


Figure 2 Removing Chips

- 4** With the 3 old software chips removed, insert each of the upgrade chips (U19, U22, and U25) in their respective sockets (align the chip's angled corner with the angled corner of its socket (see Figure 3).

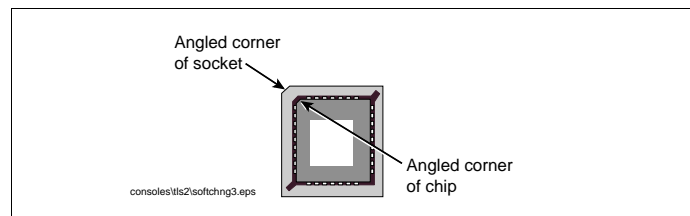


Figure 3 Aligning Chip In Socket

- 5** Verify that you have U19, U22, and U25 in the proper sockets (see Figure 1). Close the cover and replace 2 Torx screws. Turn On power to the TLS2 Console. The system will autoupdate the software during the boot up.