

## Introduction

### Purpose

This manual provides installation instructions for the following kits:

- M07494K001 - Vapor Recovery Kit for 9823K
- M07494K004 - Vapor Recovery Kit for 9123K

*Note: Vapor Recovery Kits do not include high hose retriever, hose, nozzle, swivel, and breakaway.*

### IMPORTANT INFORMATION

Read all instructions before beginning the installation. Ensure that you read and obey all warnings and safeguards as outlined in the [“Important Safety Information”](#) on [page 3](#). Before performing any work that may produce sparks (for example, drilling, use of power tools, and so on), place the dispenser at a safe distance from flammable materials.

### Table of Contents

Topic	Page
<a href="#">Introduction</a>	<a href="#">1</a>
<a href="#">Important Safety Information</a>	<a href="#">3</a>
<a href="#">Installation of the Vapor Recovery Kit for Models 9123K and 9823K</a>	<a href="#">5</a>
<a href="#">Vapor Recovery with High-hose Retriever</a>	<a href="#">7</a>

### Required Tools

The following tools are required for the installation of the Vapor Recovery Kit for models 9123K and 9823K:

- Phillips® screwdriver
- Straight blade screwdriver

## Related Documents

Document Number	Title	GOLD <sup>SM</sup> Library
MDE-4255	Gasboy® Warranty Policy Statement	Gasboy

## Abbreviations and Acronyms

Term	Description
DEF	Diesel Exhaust Fluid
NEC	National Electrical Code
NFPA	National Fire Protection Association
OSHA	Occupational Safety and Health Administration
STP	Submersible Turbine Pump
TAC	Technical Assistance Center

## Parts List

The following table lists the parts included in Vapor Recovery Kits:

Item	Description	Part Number	Quantity	
			M07494K001	M07494K004
1	Bushing, Reduced Hex Head, 1" X 3/4"	K02297	1	1
2	Nipple, 3/4" X 6 1/2" Long	R11496-70	1	1
3	Casting Splitter, VR EMCO WHEATON®	G049980	1	1
4	Street Elbow, 3/4" X 90 Degrees	K21703	1	1
5	Nipple, 3/4" X 3 1/2" Long	R11496-75	1	1
6	Standard Pipe Elbow, 3/4" x 90 Degrees	K02311	1	1
7	Nipple, 3/4" X 4 3/8" Long	R11496-84	1	1
8	Grommet, 1.5" OD x 7/8"	N15941-44	1	1
9	Label Gasboy VR Hose	M04039B003	1	1
10	Screw Hex Head Washer, 1/4"-20 x 1/2"	K85736-51	4	4
11	Adapter Non Swivel, EMCO WHEATON	G064551	1	1
12	O-ring, .676" I.D. x .070" W	G049013	2	2
13	Nozzle Boot VR 9120	G003317	N/A	1
14	Nozzle Hook VR	G003719	N/A	1
15	Screw Oval Pan Head, 8-32 x 5/8"	K50599-26	N/A	2

## Warranty

For information on warranty, refer to *MDE-4255 Gasboy® Warranty Policy Statement*. If you have any warranty-related questions, contact Gasboy's Warranty Department at its Greensboro location.

# Important Safety Information

Notes: 1) Important Safety Information section in a readily accessible location.

2) Although DEF is non-flammable, Diesel is flammable. Therefore, for DEF cabinets that are attached to Diesel dispensers, follow all the notes in this section that pertain to flammable fuels.




This section introduces the hazards and safety precautions associated with installing, inspecting, maintaining, or servicing this product. Before performing any task on this product, read this safety information and the applicable sections in this manual, where additional hazards and safety precautions for your task will be found. Fire, explosion, electrical shock, or pressure release could occur and cause death or serious injury, if these safe service procedures are not followed.

## Preliminary Precautions

You are working in a potentially dangerous environment of flammable fuels, vapors, and high voltage or pressures. Only trained or authorized individuals knowledgeable in the related procedures should install, inspect, maintain, or service this equipment.

## Emergency Total Electrical Shut-Off

The first and most important information you must know is how to stop all fuel flow to the pump/dispenser and island. Locate the switch or circuit breakers that shut off all power to all fueling equipment, dispensing devices, and Submerged Turbine Pumps (STPs).

	<b>WARNING</b>
	The EMERGENCY STOP, ALL STOP, and PUMP STOP buttons at the cashier's station WILL NOT shut off electrical power to the pump/dispenser. This means that even if you activate these stops, fuel may continue to flow uncontrolled.
	You must use the TOTAL ELECTRICAL SHUT-OFF in the case of an emergency and not the console's ALL STOP and PUMP STOP or similar keys.

## Total Electrical Shut-Off Before Access

Any procedure that requires access to electrical components or the electronics of the dispenser requires total electrical shut off of that unit. Understand the function and location of this switch or circuit breaker before inspecting, installing, maintaining, or servicing Gilbarco equipment.

## Evacuating, Barricading, and Shutting Off

Any procedure that requires access to the pump/dispenser or STPs requires the following actions:



- An evacuation of all unauthorized persons and vehicles from the work area
- Use of safety tape, cones, or barricades at the affected unit(s)
- A total electrical shut-off of the affected unit(s)

## Read the Manual

Read, understand, and follow this manual and any other labels or related materials supplied with this equipment. If you do not understand a procedure, call the Gilbarco Technical Assistance Center (TAC) at 1-800-743-7501. It is imperative to your safety and the safety of others to understand the procedures before beginning work.

## Follow the Regulations

Applicable information is available in National Fire Protection Association (NFPA) 30A; Code for Motor Fuel Dispensing Facilities and Repair Garages, NFPA 70; National Electrical Code (NEC), Occupational Safety and Health Administration (OSHA) regulations and federal, state, and local codes. All these regulations must be followed. Failure to install, inspect, maintain, or service this equipment in accordance with these codes, regulations, and standards may lead to legal citations with penalties or affect the safe use and operation of the equipment.

## Replacement Parts

Use only genuine Gilbarco replacement parts and retrofit kits on your pump/dispenser. Using parts other than genuine Gilbarco replacement parts could create a safety hazard and violate local regulations.

## Safety Symbols and Warning Words

This section provides important information about warning symbols and boxes.




### Alert Symbol



This safety alert symbol is used in this manual and on warning labels to alert you to a precaution which must be followed to prevent potential personal safety hazards. Obey safety directives that follow this symbol to avoid possible injury or death.

### Signal Words

These signal words used in this manual and on warning labels tell you the seriousness of particular safety hazards. The precautions below must be followed to prevent death, injury, or damage to the equipment:

-  **DANGER:** Alerts you to a hazard or unsafe practice which will result in death or serious injury.
-  **WARNING:** Alerts you to a hazard or unsafe practice that could result in death or serious injury.
-  **CAUTION with Alert symbol:** Designates a hazard or unsafe practice which may result in minor injury.
- CAUTION without Alert symbol:** Designates a hazard or unsafe practice which may result in property or equipment damage.

## Working With Fuels and Electrical Energy

### Prevent Explosions and Fires

Fuels and their vapors will explode or burn, if ignited. Spilled or leaking fuels cause vapors. Even filling customer tanks will cause potentially dangerous vapors in the vicinity of the dispenser or island.

DEF is non-flammable. Therefore, explosion and fire safety warnings do not apply to DEF lines.

## Important Safety Information

### No Open Fire



Open flames from matches, lighters, welding torches, or other sources can ignite fuels and their vapors.

### No Sparks - No Smoking



Sparks from starting vehicles, starting, or using power tools, burning cigarettes, cigars, or pipes can also ignite fuels and their vapors. Static electricity, including an electrostatic charge on your body, can cause a spark sufficient to ignite fuel vapors. Every time you get out of a vehicle, touch the metal of your vehicle, to discharge any electrostatic charge before you approach the dispenser island.

### Working Alone

It is highly recommended that someone who is capable of rendering first aid be present during servicing. Familiarize yourself with Cardiopulmonary Resuscitation (CPR) methods, if you work with or around high voltages. This information is available from the American Red Cross. Always advise the station personnel about where you will be working, and caution them not to activate power while you are working on the equipment. Use the OSHA Lockout/Tagout procedures. If you are not familiar with this requirement, refer to this information in the service manual and OSHA documentation.

### Working With Electricity Safely

Ensure that you use safe and established practices in working with electrical devices. Poorly wired devices may cause a fire, explosion, or electrical shock. Ensure that grounding connections are properly made. Take care that sealing devices and compounds are in place. Ensure that you do not pinch wires when replacing covers. Follow OSHA Lockout/Tagout requirements. Station employees and service contractors need to understand and comply with this program completely to ensure safety while the equipment is down.

### Hazardous Materials

Some materials present inside electronic enclosures may present a health hazard if not handled correctly. Ensure that you clean hands after handling equipment. Do not place any equipment in the mouth.

#### **WARNING**

The pump/dispenser contains a chemical known to the State of California to cause cancer.

#### **WARNING**

The pump/dispenser contains a chemical known to the State of California to cause birth defects or other reproductive harm.



Gilbarco Veeder-Root encourages the recycling of our products. Some products contain electronics, batteries, or other materials that may require special management practices depending on your location. Please refer to your local, state, or country regulations for these requirements.

## In an Emergency

### Inform Emergency Personnel

Compile the following information and inform emergency personnel:

- Location of accident (for example, address, front/back of building, and so on)
- Nature of accident (for example, possible heart attack, run over by car, burns, and so on)
- Age of victim (for example, baby, teenager, middle-age, elderly)
- Whether or not victim has received first aid (for example, stopped bleeding by pressure, and so on)
- Whether or not a victim has vomited (for example, if swallowed or inhaled something, and so on)

#### **WARNING**



Gasoline/DEF ingested may cause unconsciousness and burns to internal organs. Do not induce vomiting. Keep airway open. Oxygen may be needed at scene. Seek medical advice immediately.

#### **WARNING**

DEF generates ammonia gas at higher temperatures. When opening enclosed panels, allow the unit to air out to avoid breathing vapors. If respiratory difficulties develop, move victim away from source of exposure and into fresh air. If symptoms persist, seek medical attention.

#### **WARNING**



Gasoline inhaled may cause unconsciousness and burns to lips, mouth, and lungs. Keep airway open. Seek medical advice immediately.

#### **WARNING**



Gasoline/DEF spilled in eyes may cause burns to eye tissue. Irrigate eyes with water for approximately 15 minutes. Seek medical advice immediately.

#### **WARNING**



Gasoline/DEF spilled on skin may cause burns. Wash area thoroughly with clear water. Seek medical advice immediately.

#### **WARNING**

DEF is mildly corrosive. Avoid contact with eyes, skin, and clothing. Ensure that eyewash stations and safety showers are close to the work location. Seek medical advice/recommended treatment if DEF spills into eyes.

**IMPORTANT:** Oxygen may be needed at scene if gasoline has been ingested or inhaled. Seek medical advice immediately.

### Lockout/Tagout

Lockout/Tagout covers servicing and maintenance of machines and equipment in which the unexpected energization or start-up of the machine(s) or equipment or release of stored energy could cause injury to employees or personnel. Lockout/Tagout applies to all mechanical, hydraulic, chemical, or other energy, but does not cover electrical hazards. Subpart S of 29 CFR Part 1910 - Electrical Hazards, 29 CFR Part 1910.333 contains specific Lockout/Tagout provision for electrical hazards.

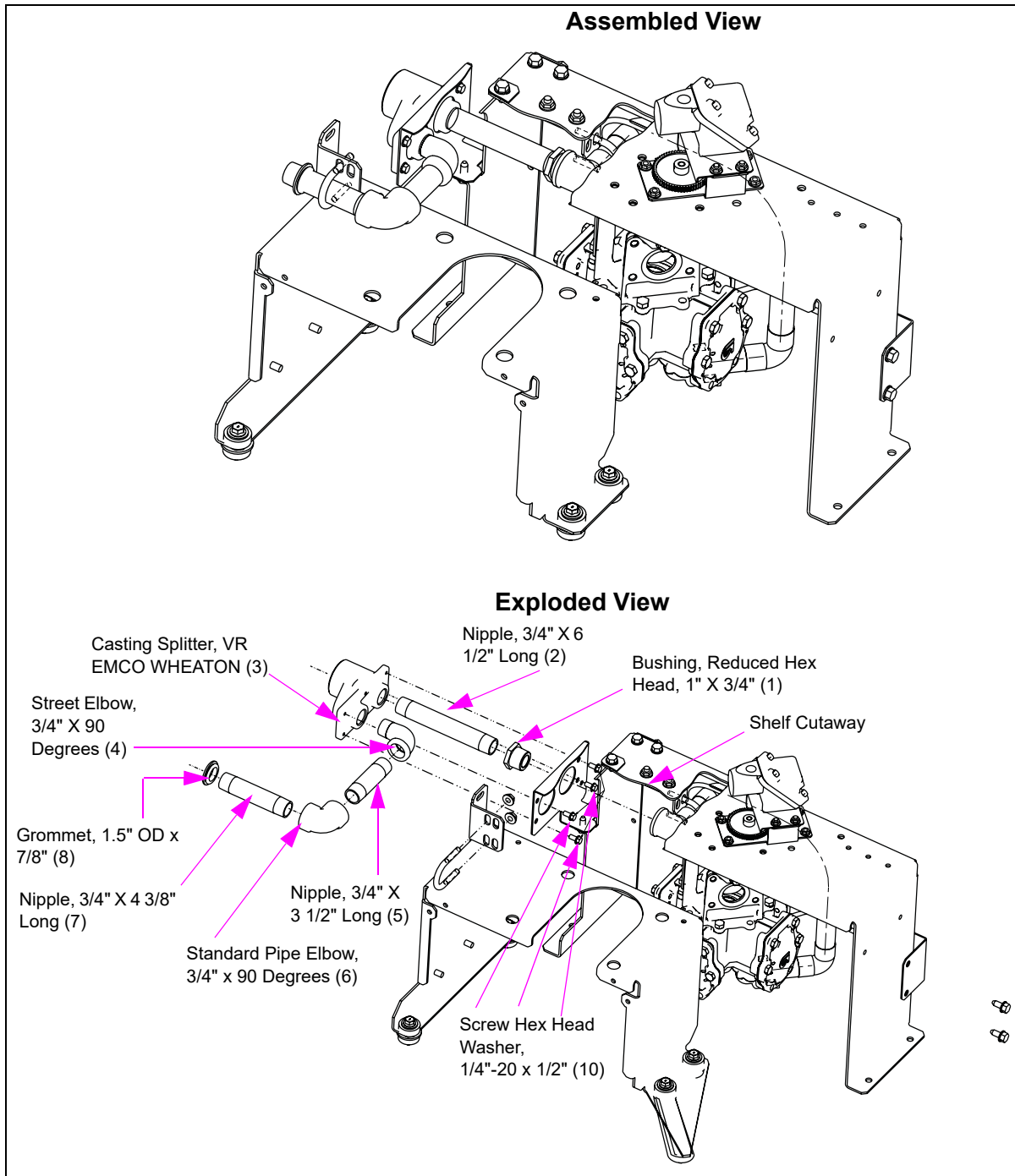
# Installation of the Vapor Recovery Kit for Models 9123K and 9823K

To install the Vapor Recovery Kit for models 9123K and 9823K, proceed as follows:

## Installing the Discharge Assembly

- 1 Remove the front door panel.  
*Note: A key is required to remove the front door panel.*
- 2 Remove the rear door panel.  
*Note: A key is required to remove the rear door panel.*
- 3 Remove four nuts from the top cover assembly and remove the top cover.
- 4 Remove the discharge pipe nipple from the discharge elbow.
- 5 Install the new Vapor Recovery Discharge Assembly as shown in [Figure 1](#) on [page 6](#).

Figure 1: Assembled and Exploded View



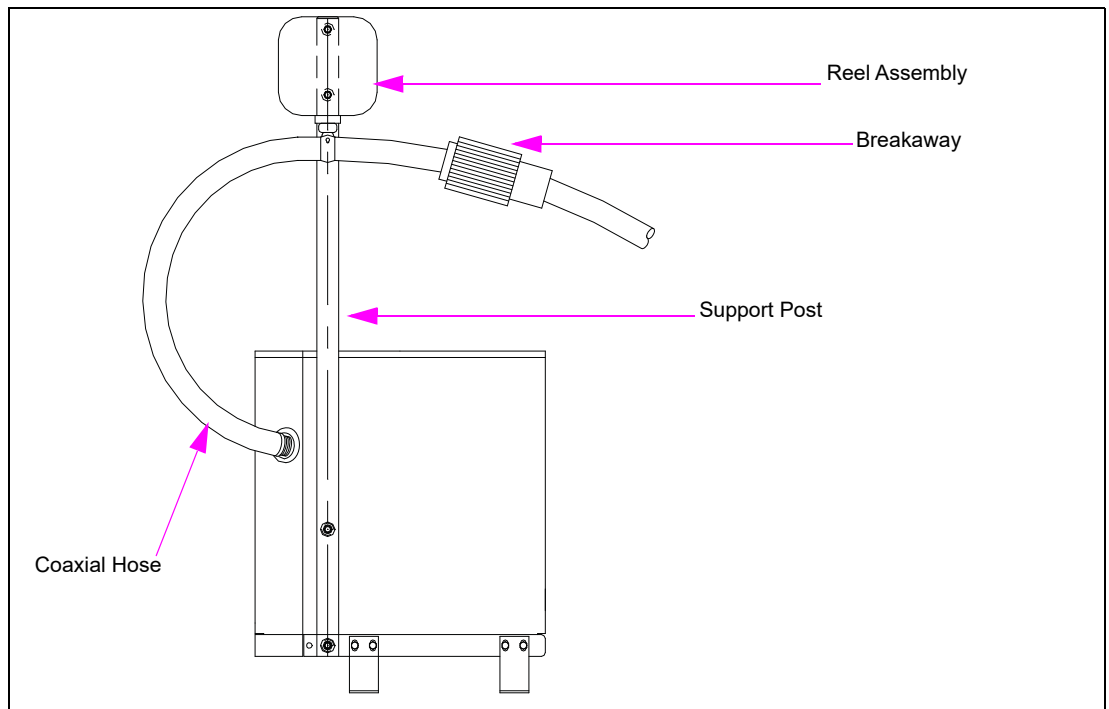
- 6 For 9123K, remove two 8-32 screws from the nozzle boot casting. Install the vapor recovery nozzle boot (item 13 in “Parts List” on page 2) with the same screws.
- 7 For 9123K, remove two 1/4-20 bolts from the nozzle hook assembly and remove the nozzle hook. Install the vapor recovery nozzle hook (item 14 in “Parts List” on page 2) with the same 1/4-20 bolts.

- 8 Re-install the dispenser top cover by replacing the four nuts removed in [step 3](#) on [page 5](#).
- 9 Re-install the rear door panel and front door panel removed in [step 2](#) and [step 1](#) on [page 5](#) respectively.

The installation of the Vapor Recovery Kit is complete.

## Vapor Recovery with High-hose Retriever

Figure 2: Vapor Recovery with High-hose Retriever



*Gasboy® is a registered trademark of Gilbarco Inc.*

*All product names, logos, and brands are the property of their respective owners and are for identification purposes only. Use of these names, logos, and brands does not imply endorsement.*



© 2021 Gilbarco Inc.

7300 West Friendly Avenue · Post Office Box 22087  
Greensboro, North Carolina 27420

Phone (336) 547-5000 · <http://www.gilbarco.com> · Printed in the U.S.A.

MDE-4619B Vapor Recovery Kit Installation Instructions for Models 9123K and 9823K · March 2021