



# WIRING DIAGRAMS

## MAGNETIC STARTER WIRING DIAGRAMS FOR 30 AMP, 110/220 VOLT COILS

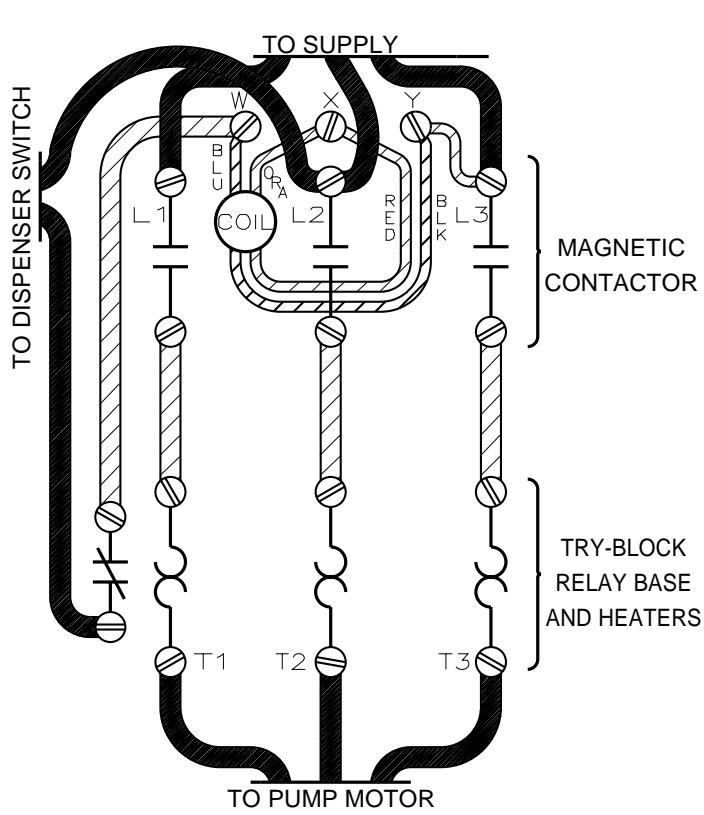
**CAUTION** Disconnect all power to the unit before installing or repairing. Voltages present in the starter control box can cause severe electrical shock.

### NOTE:

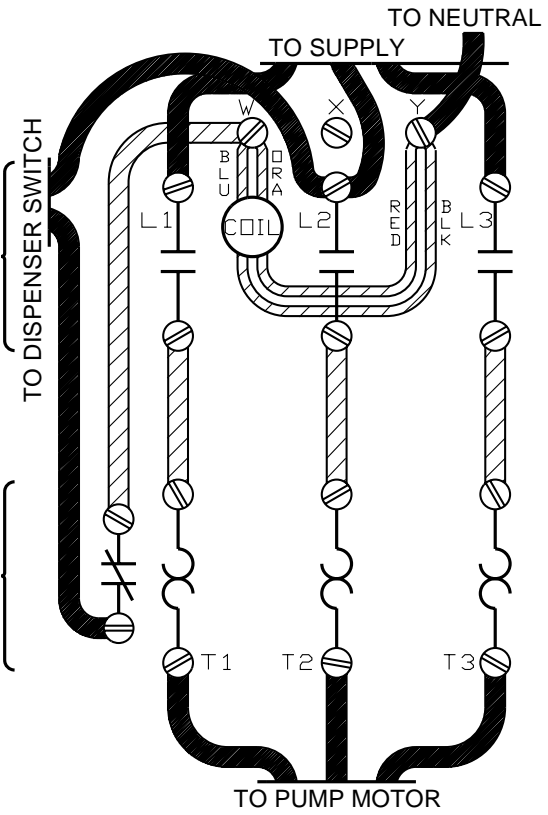
1. These starters are 3 phase, full voltage across the line starters. Check with the local power company to see if their power source is adequate for your requirements.
2. If nuisance tripping occurs, check for proper heaters, loose connections, severe arcing or pitting of contacts.
3. **CAUTION** Be sure power is disconnected before performing this procedure.

If the pump rotates backwards as evidenced by low pressure and flow, correct rotation by reversing any two of the three pump leads.

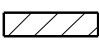


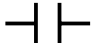


4. These starters are designed to be used with copper wire DO NOT USE ALUMINUM WIRE.
5. Installation procedures may vary. Refer to your local electrical code for proper installation regulations.
6. Remove the tubular blocks before applying power to the starter.

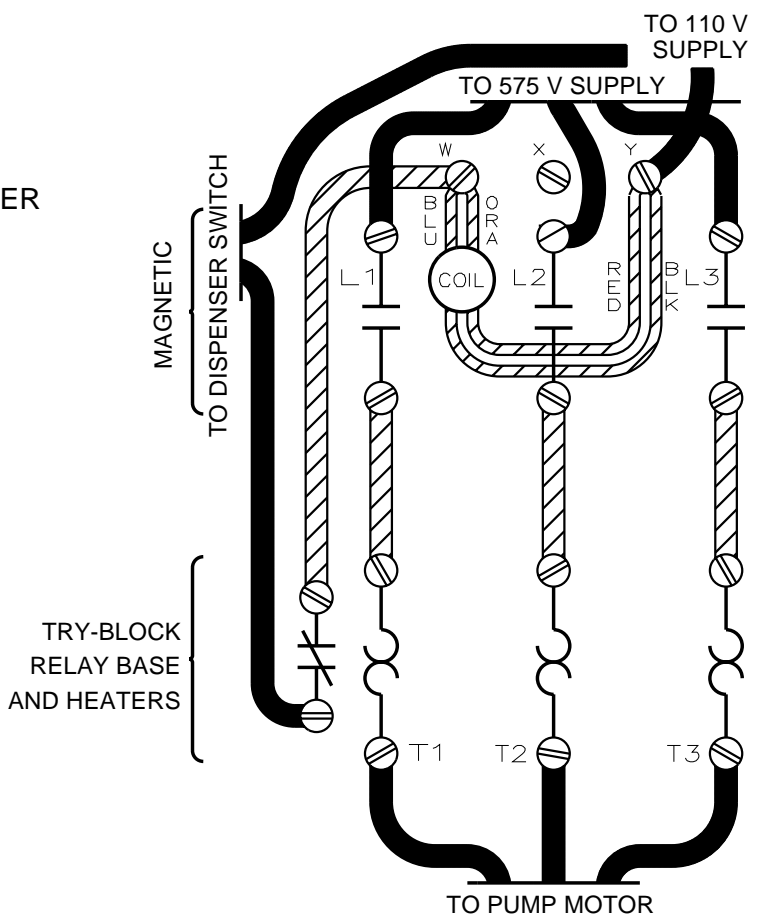


**NOTE:** COIL ABOVE IS WIRED FOR 220V TO PUMP MOTOR, 220V TO DISPENSER SWITCH



**NOTE:** COIL ABOVE IS WIRED FOR 220V TO PUMP MOTOR, 110V TO DISPENSER SWITCH

-  WIRING INSTALLED BY MANUFACTURER
-  WIRE ADDED BY INSTALLER
-  SCREW TERMINAL
-  NORMALLY OPEN CONTACT
-  NORMALLY CLOSED CONTACT
-  OVERLOAD HEATER



**NOTE:** COIL ABOVE IS WIRED FOR 575V TO PUMP MOTOR, 110V TO DISPENSER SWITCH



125 Powder Forest Drive • Simsbury, CT 06070  
Tel: (860) 651-2700 • Fax: (860) 651-2719