

Salesmaker™ Pro Blender

Model No.	Description
AB2011A	Salesmaker Pro Blender, Full Vapor
AB2021A	Salesmaker Pro Blender, Non Vapor
AB2031A	Salesmaker Pro Blender, Vapor Ready

Note: Single sided units are indicated by a one in the third digit.

Load Table

See attached wiring diagrams.

FE-188D Salesmaker Pro Blender

Operating Environment

Relative Humidity 20% to 95% non-condensing
 Minimum Outside Ambient Temperature..... -22°F (-30°C)
 Maximum Outside Ambient Temperature 113°F (45°C)

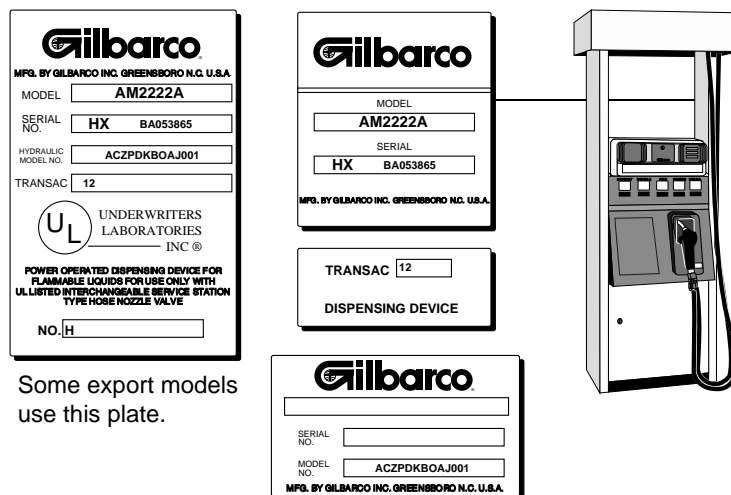
Performance Requirements

Minimum Delivery Rate 10 gpm @ 35 psi inlet pressure
 (38 lpm @ 102 kg/cm² inlet pressure)
 Meter Accuracy ± .25% from 1.5 to 15 gpm (5.7 to 57 lpm)
 Blend Accuracy ± 1% from .5 to 15 gpm (1.9 to 5.7 lpm)

Weights

Salesmaker Pro Blender

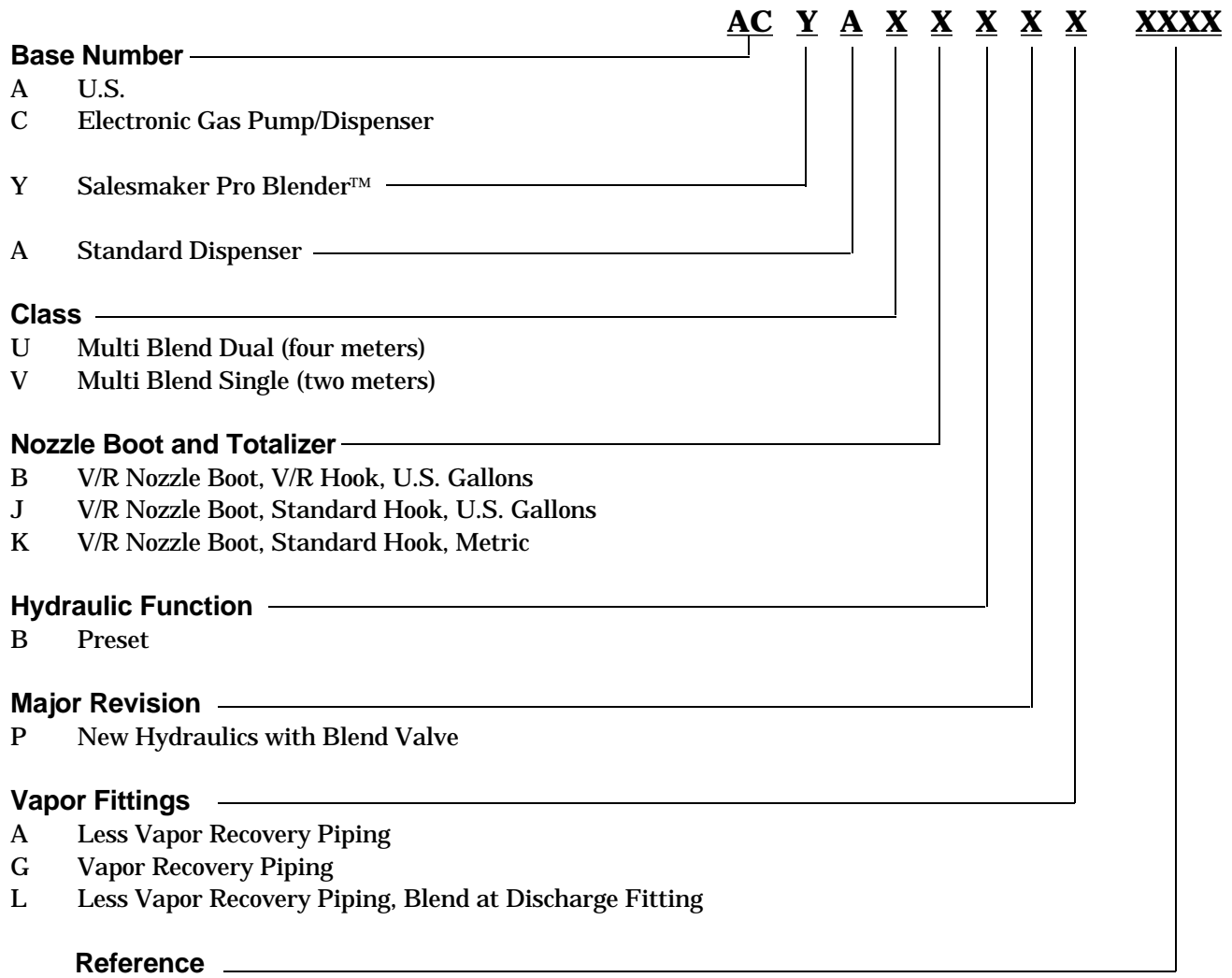
Dispenser Weight 740 pounds/333 kilograms



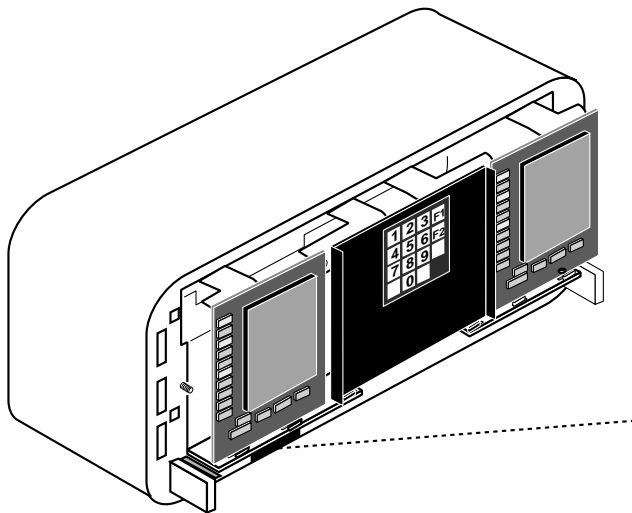
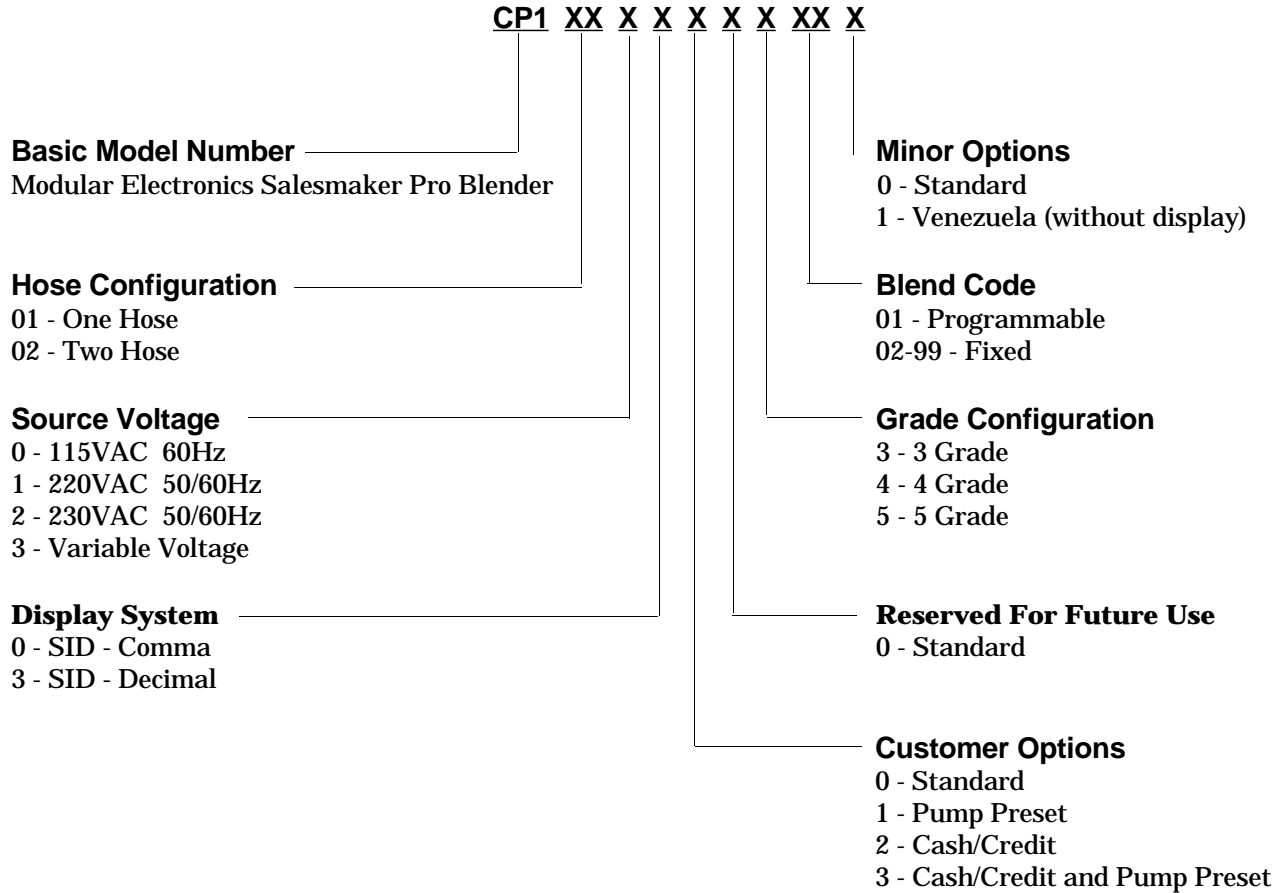
Some export models use this plate.

Model Number Breakdown • Hydraulics

The model number is attached to a plate on the corresponding module.



Model Number Breakdown • Electronics



Thirteen digit electronics model number is stamped on plate attached to bottom of electronics module.

Elevation/Footprint

Salesmaker Pro Blender™

Screening Specifications

Lower Doors

Overall: 27.38" H x 28.92" W
(Total Blank Area)

Front Surface: 24.58" H x 26.12" W

Canopy Option (Screening Area)

Front Surface: 9.31" H x 38.62" W

Side Surface: 9.31" H x 31.12" W

Brand Panels

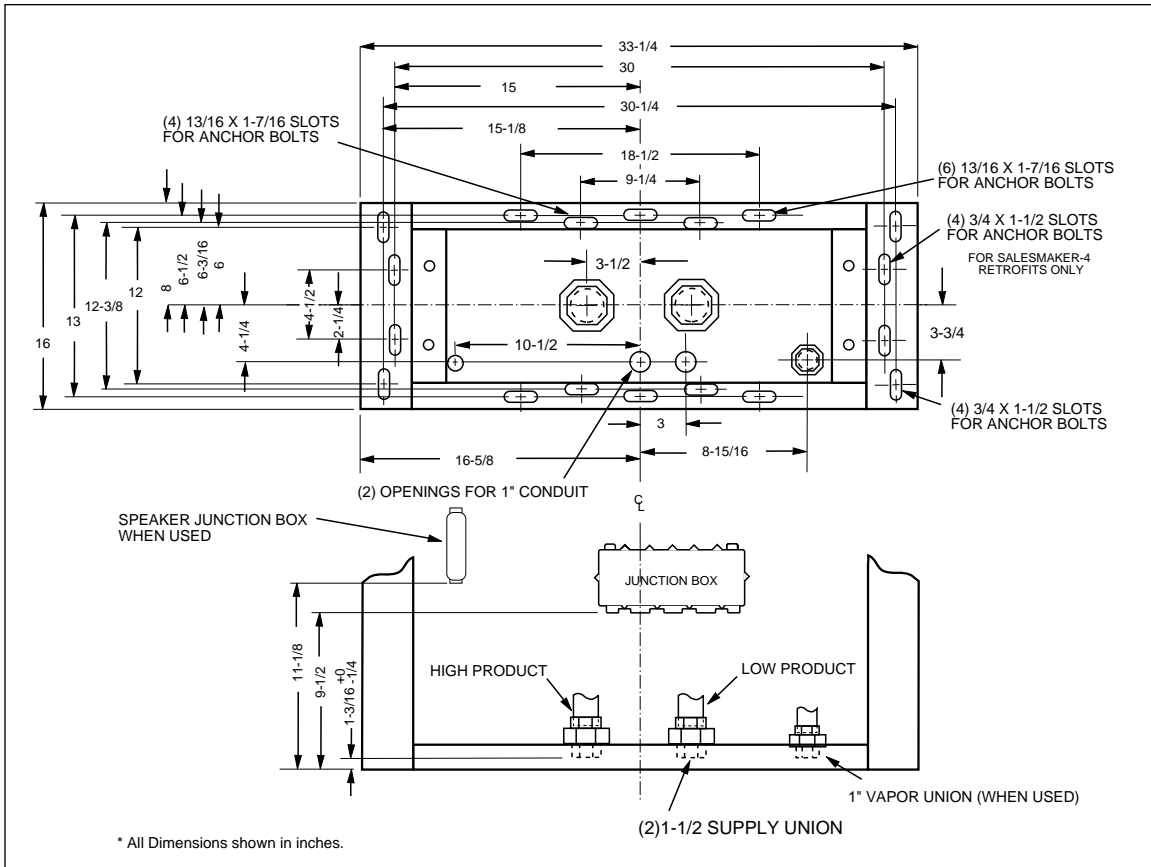
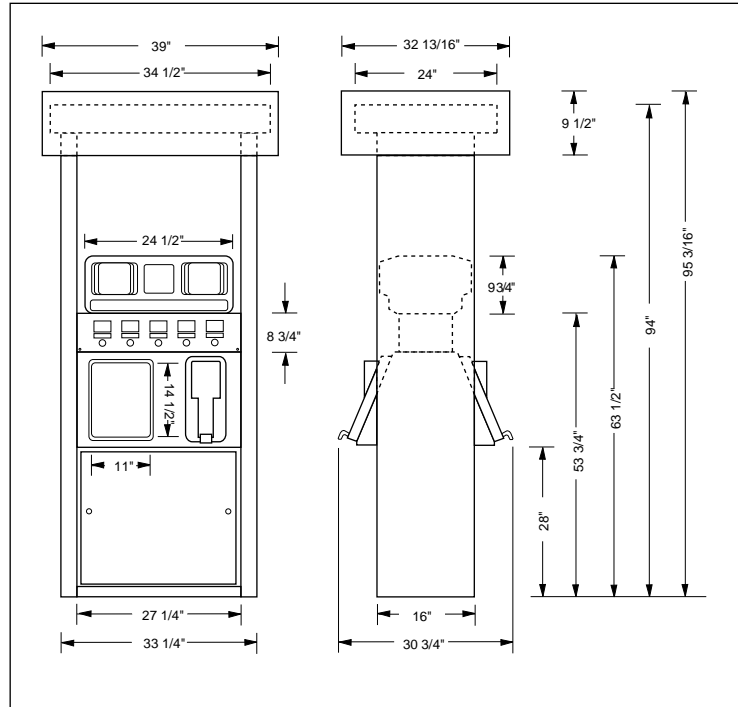
Overall: 2.24" H x 28.92" W
(Total Blank Area)

Screening Area: 1.86" H x 20.88" W
(Maximum Viewing Area)

Octane Decal Size

Overall: 2.25" H x 2.75" W

Screening Area: 2" H x 2.5" W



* All Dimensions shown in inches.