

## INSTALLATION INSTRUCTIONS: HARD DRIVE OPTION KIT C05986

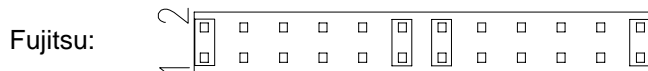
This kit should contain the following:

Item	P/N	Description	Item	P/N	Description
1	C34412	Bracket, HD Support	6	C01159	Washer, #4 Locking (Qty 2)
2	C09162	Hard Disk Drive, SCSI	7	C03473	Nut, #4-40 Hex Keps (Qty 2)
3	C04035	Screw, #6-32 x 1/4" (Qty 4)	8	C05984	Cable Assy., HD Ribbon
4	068843	Washer, #6 Locking (Qty 4)	9	C05552	Cable Assy., HD Power
5	C01152	Screw, #4-40 x 1/4" (Qty 2)	10	C34410	Cover Bracket

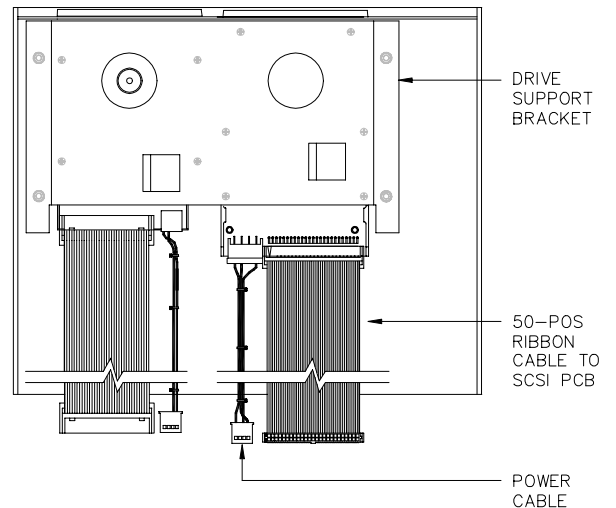
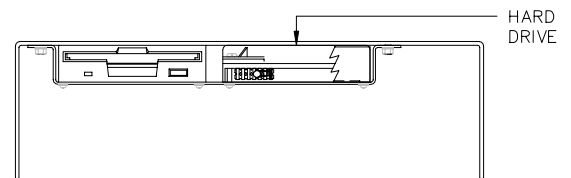
System Requirements: C05852 CPU PCB containing a Dsite chip (U36) of version 4.0F. The hard drive is not compatible with the C05328 CPU PCB. If your system does not meet this requirement, consult your sales representative.

**Important: Before you begin, make sure you have copies of your Release and Applications disks and a backup of your site data. Change your command search path in SYS\_PAR, page 9 to default (spacebar) and save this change.**

1. Turn off power to the unit and remove the cover.
2. Remove spot-welded cover plate, if present, from Drive B position on base.
3. Remove the original disk drive support bracket from the cover.
4. If the disk drive support mounting bracket already has mounting holes for a hard drive, skip to the next step. If not, relocate the original 3-1/2" drive to the new support bracket (item 1).
5. Verify that the drive is jumpered as shown below:



6. Mount the new hard drive to the drive support bracket using four screws and washers (items 3 & 4). Mount cover bracket (item 10) to drive support bracket using two screws, washers, and nuts (items 5, 6 and 7).
7. Mount the drive support bracket onto the cover.
8. Adjust the position of the drive and drive support bracket so the cover slides easily onto the base.
9. Plug the 68-pin to 50-pin adapter into the hard drive. Then plug the 50-position ribbon cable (item 8) into P14 of the CPU PCB and plug the opposite end into the adapter.
10. Plug the power cable into the power supply, and then into the hard drive.
11. On the CPU Board, close DIP switch 1, position 2 to enable the hard drive.
12. Reinstall the cover, without mounting screws, and turn on the power. You should hear the hard drive begin to spin.
13. Reinstall the cover mounting screws.



## Installing Your SC II Software on Your New Hard Drive

1. Insert the Applications disk into drive A. Type **A:BIN/RCP A: C:**. This will copy the Applications disk to the hard drive.
2. Remove Applications disk from drive A and insert the Release disk. Type **RCP A: C:**. This will copy the Release disk to the hard drive.
3. Remove the Release disk from drive A. If you have other disks containing files you want on the hard drive, insert the disk into the A drive and type **RCP A: C:**