

The Advantage® Dual, and Quad Dispenser Foundation Compared to Tokheim Foundation



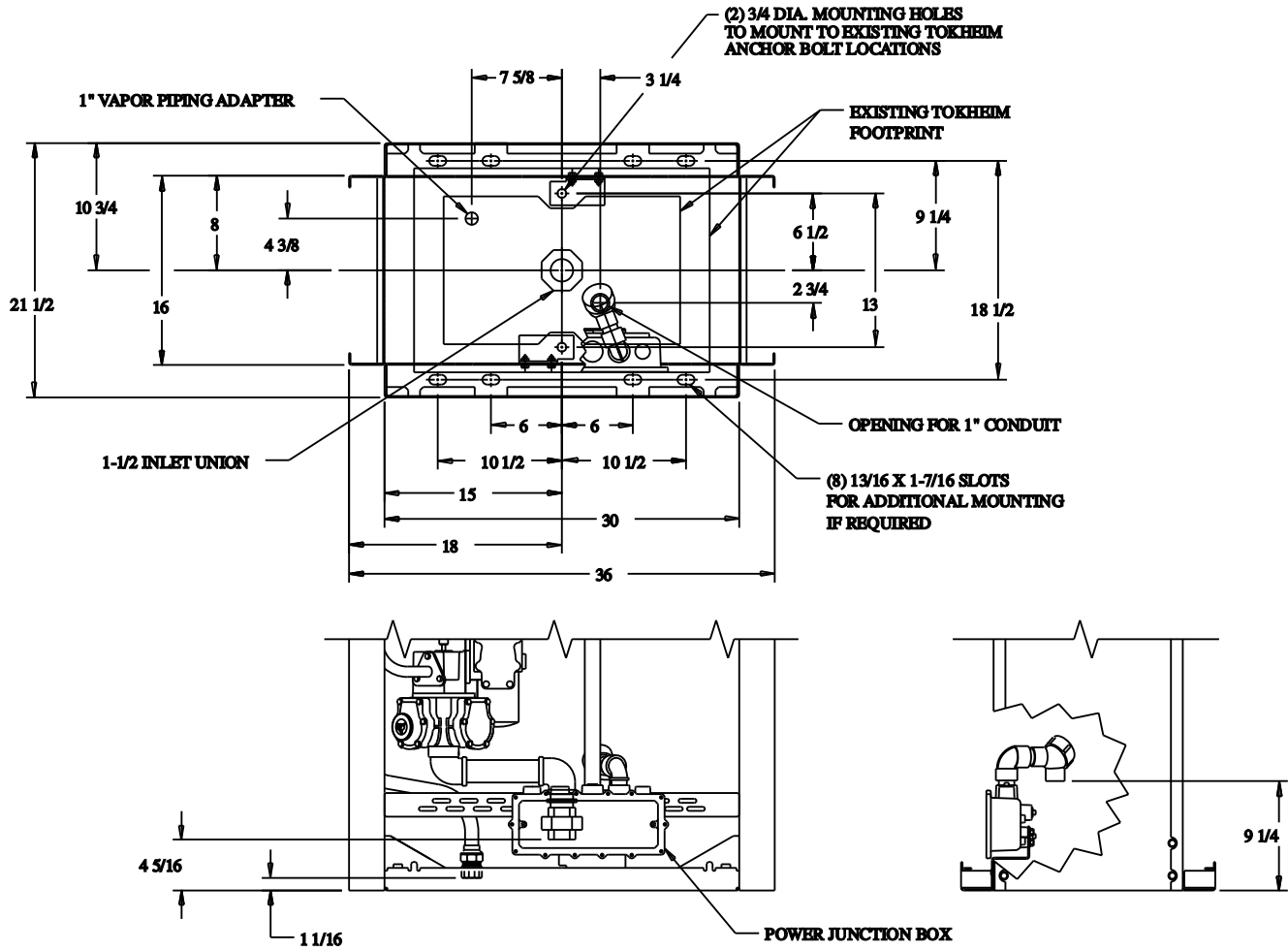
This is not a standalone document.

Further Technical Information

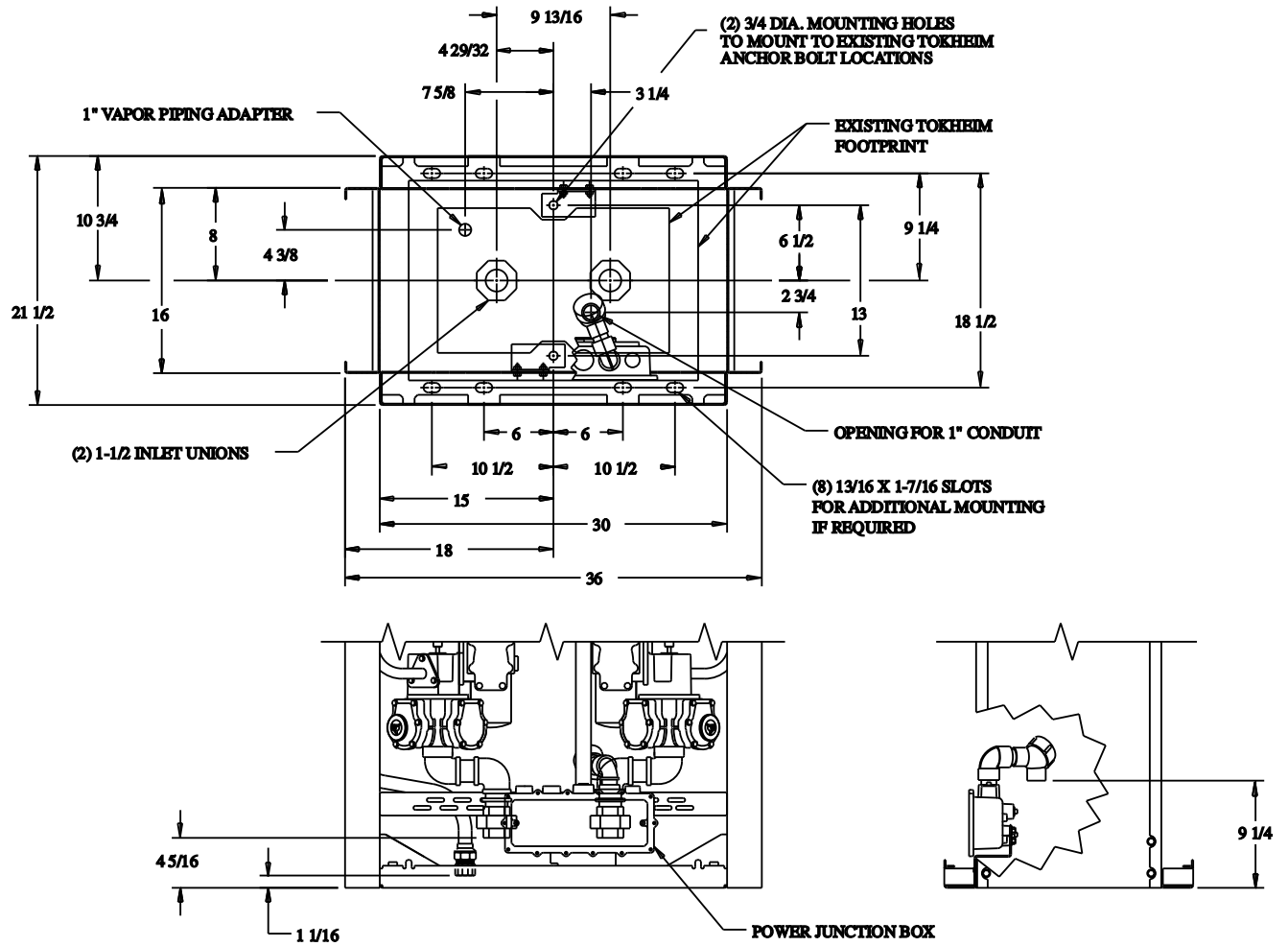
Refer to the enclosed documentation kit for MDE-2530 Pump and Dispenser Installation manual, and MDE-2530-05 Pump and Dispenser Installation Addenda. The base installation manual will provide instructions on how to install units. The Advantage Dual, Super-Hi™ Dual and Quad Dispenser '-05' addenda will inform you of specific model numbers, weights, elevation dimensions, wiring diagrams, etc.

Comparison Foundation Diagrams

The Advantage Dual Dispenser to Tokheim



The Advantage Quad Dispenser to Tokheim



Installation Hints - ARCO

Distribution Box


PA02610000010 - Accommodates 12 fueling stations and requires (1) Q11542-53 50' cable.

PA02610000020 - Accommodates 24 fueling stations and requires (1) Q11542-53 50' cable per 12 fueling stations.

Pump Access Module (PAM)

PA02410010001 - Accommodates up to 36 fueling stations.

Electrical Information

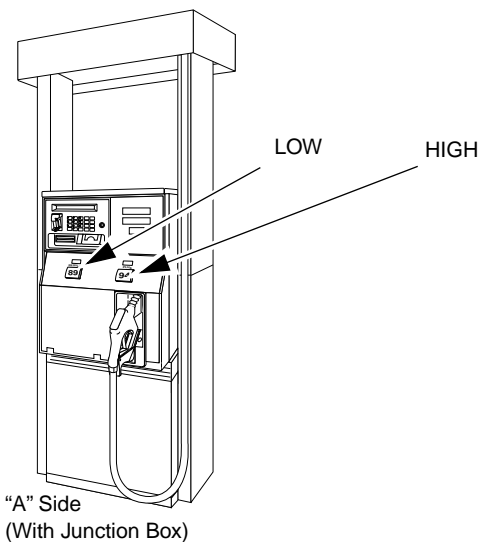
	IMPORTANT
<p>Cross phasing possible. Do not connect two dispensers on opposite phase circuits. Do not operate Tokheim and Gilbarco pumps at same time. If Cross phased, Hydraulic Interface board will receive 230V and burn-out Maintain spare Hydraulic Interface boards.</p>	

Shear Valve - To - Union Installation

- 1 Remove 1-1/2" union and nipple from dispenser inlet, prior to placing unit on island.
- 2 Install union on top of shear valve, once dispenser is on island.
- 3 Determine and install required length nipple between union and inlet elbow.

Product Branding/Inlet Orientation

This section describes how to keep the 'appearance' of high product branding located on right hand side of pricing area.



Units With Molded Door

Right Hand Inlet Piped For High-Product

Factory units of The Advantage Quad single-hose dispensers are configured for ‘high-product inlets’ to be piped on right hand side of unit (as viewed from the “A” side).

Product Configuration Items	A-Side		B-Side	
	Left Hand	Right Hand	Left Hand	Right Hand
PPU Door Branding	MID	HIGH	MID	HIGH
STP/Inlet Product	STP1/LOW	STP2/HIGH	STP2/HIGH	STP1/LOW
Pump Handle connector		1		1
Grade Select connector	1	2	1	2
T18698 PPU Bd. Jumper Location	A	B	AC	BC

Left Hand Inlet Piped For High-Product

If your island has a unit piped for ‘high-product inlet’ to be on left hand side of unit, your dispenser must be “grade mapped” differently. Follow these steps to correct your configuration.

- 1 At dispenser, swap PPU addressing and grade select connections on both sides as shown.

Product Configuration Items	A-Side		B-Side	
	Left Hand	Right Hand	Left Hand	Right Hand
PPU Door Branding	MID	HIGH	MID	HIGH
STP/Inlet Product	STP1/HIGH	STP2/LOW	STP2/LOW	STP1/HIGH
Pump Handle connector		1		1
Grade Select connector	2	1	2	1
T18698 PPU Bd. Jumper Location	B	A	BC	AC

- 2 At console, grade map both sides of console so G1= high octane price and G2= low octane price.
- 3 At STP Control and Isolation Relay Boxes, wire STP1 to turn on HIGH product STP and wire STP2 to turn on LOW product STP.

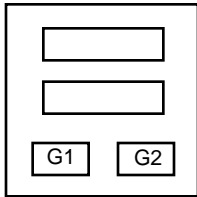
Units With Metal Door

PPU's are located on main display board. Programming functions change grade locations with this door as opposed to jumpers and connector changes on the molded door.

Right Hand Inlet Piped For High-Product

Product Configuration Items	A-Side		B-Side	
	Left Hand	Right Hand	Left Hand	Right Hand
PPU Door Branding	LOW	HIGH	LOW	HIGH
STP/Inlet Product	STP1/LOW	STP2/HIGH	STP2/HIGH	STP1/LOW

Set to 0



PPU Mapping

Command Code 12, Function Code 5
Default set to "0".

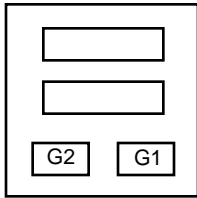
Valve/STP Mapping

Command Code 17, Function Code 3
During a 'Cold Start' error code 4350 will flash. Program to "1". This will keep low product on left hand side and high product on right hand side. For units with inlet pipes reversed/backwards.

Left Hand Inlet Piped For High-Product

Product Configuration Items	A-Side		B-Side	
	Left Hand	Right Hand	Left Hand	Right Hand
PPU Door Branding	LOW	HIGH	LOW	HIGH
STP/Inlet Product	STP1/HIGH	STP2/LOW	STP2/LOW	STP1/HIGH

Set to 1



PPU Mapping

Command Code 12, Function Code 5
Program to "1". This will reverse the grades.

Valve/STP Mapping

Command Code 17, Function Code 3
During a 'Cold Start' error code 4350 will flash. Program to "2". This will reverse the G1/G2 valves and STP controls. Consequently, low product becomes right hand side and high product on left hand side.