

VAPOR RECOVERY OVERHEAD RETRACTOR INSTALLATION INSTRUCTIONS

MODEL NUMBER 884-048-5

The Red Jacket Overhead Retractor is certified for use in Stage II vapor recovery installations under Executive Order G-70-15-D of the California Air Resources Board.

BOX INSTALLATION

The Red Jacket Overhead Retractor 884-048-5 is intended to be mounted onto a 4.50-inch wide by .25-inch thick bar.

IT IS THE RESPONSIBILITY OF THE INDIVIDUAL PERFORMING THE INSTALLATION TO COMPLY WITH ALL LOCAL CODES AND SAFTY REGULATIONS REGARDING GASOLINE AND VAPORS.

1. Install crossbar at the desired height.
2. The mounting bracket will require two holes or a slot that will accommodate the two 3/8-16 bolts located 4-inches, on center, apart as shown in Figure 2.
3. Mount the Red Jacket Retractor Box using the two 3/8-16 x 1-inch long hex, socket-head bolts, two flat washers, and two lockwashers, all included with retractor, as shown in Figure 2.

HOSES AND SWIVELS

Fluid Hose -- 5/8-inch inside diameter, U.L. listed for gasoline. Twelve-foot length.*

Vapor Hose -- 5/8-inch inside diameter, U.L. listed for gasoline. Length as needed to permit natural drainage when hanging, but sufficient to avoid strain on the hose at the dispenser.

* The hose length referenced is based on a standard softwall hose. Mounting configuration, hose type and climate may affect flexibility of the hose.

Swivels -- 360° in line, .495-inches minimum inside diameter, one on each end of the hoses.

Hose Ties -- Minimum of five, Punduit DHC 1.12 x 1.75 or equivalent.

1. Adjust the clamp to comply with the 10-inch maximum loop at the nozzle and secure. See Figure 1.
2. Pull the hose to its full length. It should extend completely and then retract completely.
3. If adjustment is required in the spring tension, remove the four screws from the cover, extend cable approximately 18 inches, wind or unwind one turn at a time and repeat step 2.

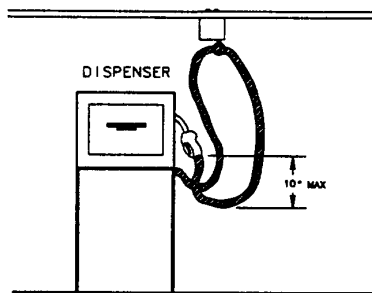


FIGURE 1

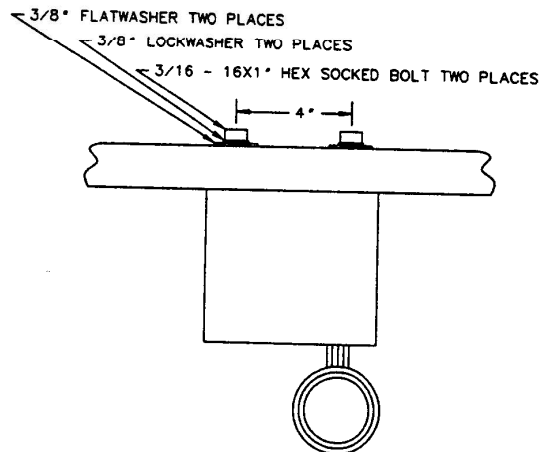


FIGURE 2

WARRANTY

RED JACKET OVERHEAD RETRACTOR

This warranty is a LIMITED warranty. Anything in the warranty notwithstanding, IMPLIED WARRANTIES FOR PARTICULAR PURPOSE AND MERCHANTABILITY SHALL BE LIMITED TO THE DURATION OF THE EXPRESS WARRANTY. MANUFACTURER EXPRESSLY DISCLAIMS AND EXCLUDES ANY LIABILITY OF CONSEQUENTIAL OR INCIDENTAL DAMAGES FOR BREACH OF ANY EXPRESS OR IMPLIED WARRANTY.

WARRANTY

Red Jacket Overhead Retractors are guaranteed as to workmanship, material and performance when properly installed, used and cared for. Should any part, or parts, prove defective within 90 days from date of installation, it will be replaced F.O.B. destination without charge, provided the part (or parts) is returned transportation charges prepaid. No allowance will be made for labor, transportation, or other charges incurred in the replacement or repair of defective parts by customer. We will not be responsible for labor charges, loss, or damages caused by the use of this product. This warranty does not apply when damage is caused by careless handling, improper installation or normal wear and tear.



by  VEEDER-ROOT

125 Powder Forest Drive • Simsbury, CT 06070
Tel: (860) 651-2700 • Fax: (860) 651-2719

042-122 Rev. B