

# Insite360 FuelQuest Visibility Software

## Solving Problems through Actionable Insights



The majority of fuel station owners track site-level inventory, compliance, and alarm condition information on a site-by-site basis. For owners and operators of fuel station networks this data gathering process is time consuming and can delay access to critical information that may cause run-outs, theft, or other unscheduled downtime.

Insite360 FuelQuest Visibility software solutions provide actionable insight into fueling networks, enabling operators to monitor, configure, and control their entire network. It connects users to their network of automatic tank gauges via any web-enabled computer, tablet, or mobile device.

### Visibility across your entire network

- Dashboards provide network data at-a-glance for managing issues and exceptions
- Real time alarm notifications help owners maximize site uptime
- Easy access to complete site history and analytics including inventory, delivery, alarms and compliance
- Remote diagnostic tools and services reduce frequency of dispatches and reduce time on site for repairs
- Browser-based portal enables remote access via multiple devices any time, from anywhere

### Insightful Network and Site Reports

- Inventory
- Deliveries
- Reconciliation
- Flow\*
- Alarms
- Compliance
- Site Communication
- Custom reporting

### Solutions within the Insite360 FuelQuest Visibility

- Inventory monitoring provides a current snapshot of available fuel assets
- Compliance reports keep track current compliance status and previous test results
- Reconciliation reports periodic variance and maintain a record for trend analysis
- Equipment Maintenance notifies users of malfunction or equipment alarms
- Flow Monitoring reports when nozzle throughput is low or dispensers are unused



The Insite360 FuelQuest Visibility software is securely hosted and managed by Veeder-Root and can be accessed 24/7/365 by any web-enabled device. Compatible tank gauges include; Veeder-Root TLS-450 PLUS, TLS-450, TLS-350 Series, TLS-300 Series, TLS 2 Series, and any other ATG that supports Veeder-Root Serial Interface Protocol.\*\*

\*Requires Business Inventory Reconciliation (BIR) equipment to be installed on TLS-350 / TLS-450 / TLS-450PLUS ATGs

\*\*Not all Insite360 FuelQuest Visibility functionality will be available on non-Veeder-Root ATGs.

# Insite360 FuelQuest Inventory Forecasting Software

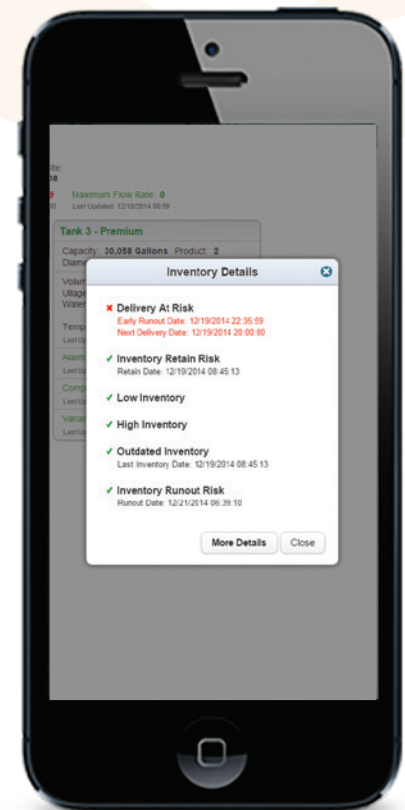
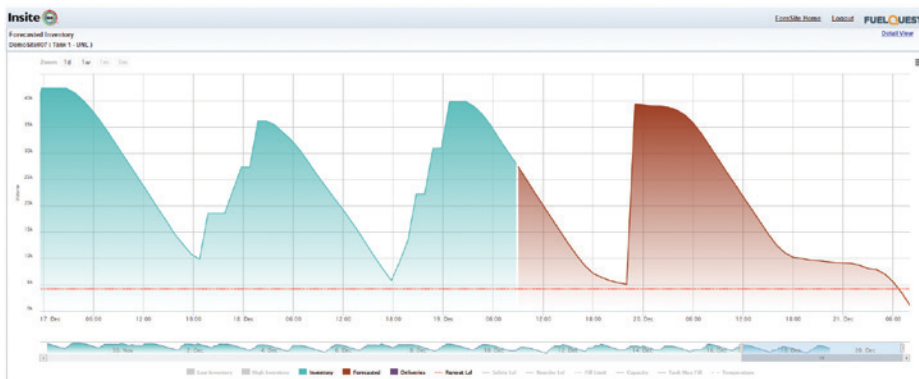
The Insite360 FuelQuest Inventory Forecasting software works with the Visibility solutions to ensure the effective and efficient management of fuel inventory.

Even the best fuel plans, leveraging the most accurate and complete data at the time, can be disrupted by subsequent changes in supply and demand. Once a plan is being executed and orders have been placed, it can be difficult to judge the effectiveness of the plan, and make mid-course corrections to avoid run-out and retain situations.

Using predictive analytics, Insite360 FuelQuest Inventory Forecasting provides a forward-looking and continuously adaptive estimate of when a fuel site will need additional inventory. By comparing this predicted run-out period to the next planned fuel delivery, Inventory Forecasting gives fuel managers the opportunity to make corrections before a problem gets expensive or revenue is lost. Stations can avoid run-outs and retains and can improve the efficiency – and profitability – of their planning and operations.

## Key Features

- Real-Time Supervisory View – Accurate visibility into the performance of fuel replenishment plans
- Operations Rules – Customizable rules for evaluating inventory status, projected usage, potential retain/run-out events and plan deviations
- Inventory Exceptions – Early warning indicators of out-of-tolerance inventory conditions
- Supervisor Drill Down – Inventory, order, delivery, and sales data captured via automated polling, scheduled import or manual entry
- Usage Planning - Fine-tune forecast assumptions for one-time and recurring events



*Identify at risk deliveries with time to adjust plans.*