



# **GASBOY**

---

## **SERIES 8800E WIRING DIAGRAMS FOR CONNECTION TO SERIES 1000 FUEL MANAGEMENT SYSTEM**

**T24278**

**REV. 9123**

Copyright 2003 by Gasboy International LLC All rights reserved.  
The information in this document is confidential and proprietary. No further disclosure shall be made without permission from Gasboy International LLC. Gasboy International LLC believes that the information in this document is accurate and reliable. However, we assume no responsibility for its use, nor for any infringements of patents or other rights of third parties resulting from its use. We reserve the right to make changes at any time without notice.

**GASBOY INTERNATIONAL LLC LANSDALE, PA**

# IMPORTANT WARNINGS AND SAFEGUARDS

Gasoline and petroleum products are flammable. To avoid injury or death to persons or damage to equipment or property, follow these listed warnings and other warnings and precautions outlined in this manual when installing, using, or working around this equipment. Check with GASBOY Technical Services for compatibility of liquids with pump materials.

## TURN OFF AND LOCK OUT ALL POWER TO PUMP BEFORE PERFORMING SERVICE, MAINTENANCE OR IN THE EVENT OF A FUEL SPILL.

All products must be installed by a qualified installer and used in conformance with all building, fire, and environmental codes and other safety requirements applicable to its installation and use, including, but not limited to, NFPA 30, NFPA 30A, NFPA 395 & NFPA 70. A qualified installer is familiar with fuel systems installations under the above stated building, fire, and environmental codes and other safety requirements for the particular type of installation.

This product is only part of a fuel dispensing system and additional equipment and accessories, such as, but not limited to, breakaway connectors, shear valves, pressure regulators, flow limiters, and other safety devices may be necessary to meet the applicable codes.

For maximum safety, we recommend that all employees be trained as to the location and procedure for turning off power to the entire system. Instructions regarding proper operation of the equipment along with the appropriate safety warnings should be posted in plain view at the fuel island.

Before performing service or maintenance (including changing of fuel filters or strainers) or in the event of a fuel spill, turn off and lock out all power to the system. In battery-powered pumps, disconnect power source. In submersible pump applications, turn off and lock out power at the master panel and close any impact valves to the submersible pump and any other dispensers which use that submersible pump. AC power can feed back into a shut-off dispenser when dispensers share a common submersible pump or starter relay. Also block islands so no vehicles can pull up to the dispenser when the dispenser is being worked on.

**DO NOT** use Teflon tape for any pipe threads in the product.

**DO NOT** use consumer pumps for pumping fuel or additives into aircraft.

**DO NOT** use commercial pumps for direct fueling of aircraft without filters and separators necessary to ensure product purity.

**DO NOT** use where sanitary design is required (for food products for human consumption) or with water-based liquids.

**DO NOT** smoke near the pump or when using the pump.

**DO NOT** use near open flame or electrical equipment which may ignite fumes.

**DO NOT** permit the dispensing of gasoline or other petroleum products into a vehicle with its motor running.

**DO NOT** permit the dispensing of gasoline or other petroleum products into unapproved containers or into approved containers in or on vehicles including trucks. All containers must be filled on the ground to prevent static discharge. Always use Approved and Listed hoses and nozzles with electric pumps and dispensers.

**DO NOT** block open the nozzle in any manner. Nozzles shall conform to UL and NFPA code requirements for attended or unattended service.

**DO** ensure that the pump is equipped with proper filters based on the product being dispensed and its intended use.

**DO** wear safety goggles and protective clothes when dispensing any liquid which may be potentially harmful or hazardous.

**DO** keep all parts of body and loose clothing clear of belts, pulleys, and other exposed moving parts at all times.

**DO** require washing and changing of clothes if fuel is spilled on a person or

his/her clothing. Keep away from open flames, sparks, or people smoking.

**DO** provide a receptacle for catching product from pump/meter when servicing.

**DO** clean up product spills on the driveway. Turn off and lock out all power prior to cleanup.

**DO** insure pump is properly grounded.

**DO** insure hose is compatible with fluid being dispensed.

**DO** inspect hose, nozzle, and pump on a regular basis for wear, damage, or other conditions which may create a safety or environmental hazard.

**DO** make sure all pipe threads are properly cut and the inside reamed to remove burrs. Use UL classified gasoline-resisting compound on all joints of gasoline handling piping. Sealing compound must also be resistant to Gasohol (Ethanol and Methanol). Use gasoline-resistant pipe compound on male threads only; pipe compound used on female threads can be squeezed into the supply line where it can enter the product stream and become lodged in the pump or meter.

**DO** ensure that junction box covers are in place and properly tightened. Mating surfaces between the box and cover must be free of dirt, nicks, and scratches. All unused entries into the junction box must be properly plugged.

---

## ABOUT THESE WIRING DIAGRAMS

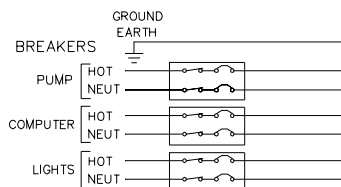
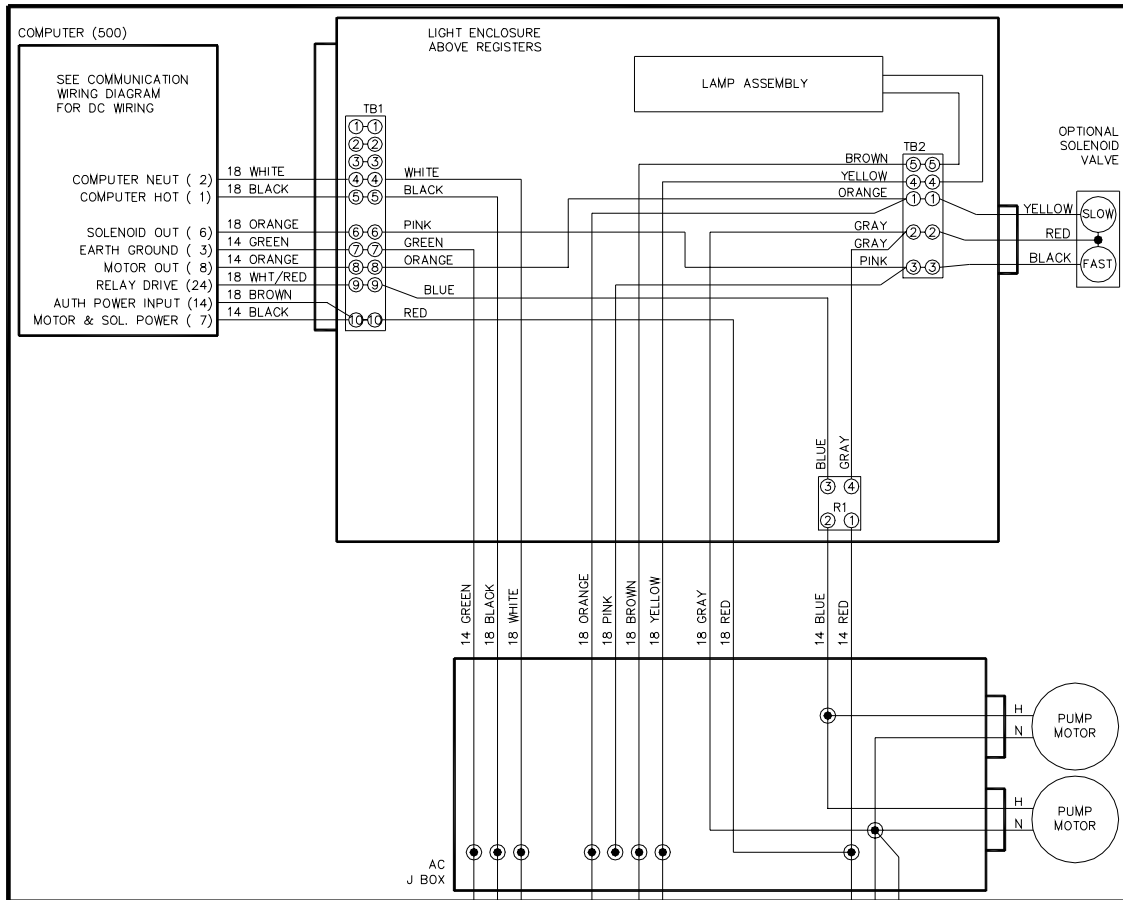
---

This document contains the applicable wiring diagrams for connecting Series 8800E pumps and dispensers to a Series 1000 fuel management system. Be sure to follow all guidelines and restrictions in both the *Series 8800E Installation/Operation Manual* and the *Series 1000 Installation Manual*.

The diagrams included are listed below:

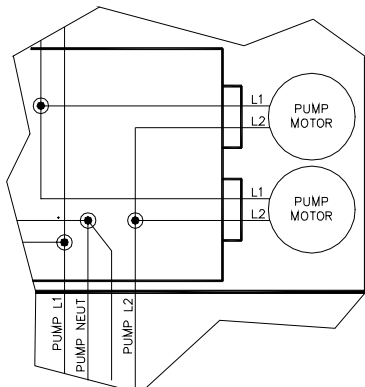
8840E, 8853EHC.....	2
8840E, 8853EHC, 380V .....	3
8850E .....	4
8853E .....	5
8853E, 380V.....	6
8853ETW1.....	7
8853ETW1, 380V .....	8
8853ETW1M, 8853ETW2.....	9
8853ETW1M, 8853ETW2, 380V .....	10
8840EX, 8850EX, 8853EX .....	11
8853EXTW1 .....	12
8853EXTW2 .....	13
DC Wiring – Single .....	14
DC Wiring – Twin.....	15

Models: 8840E, 8853EHC

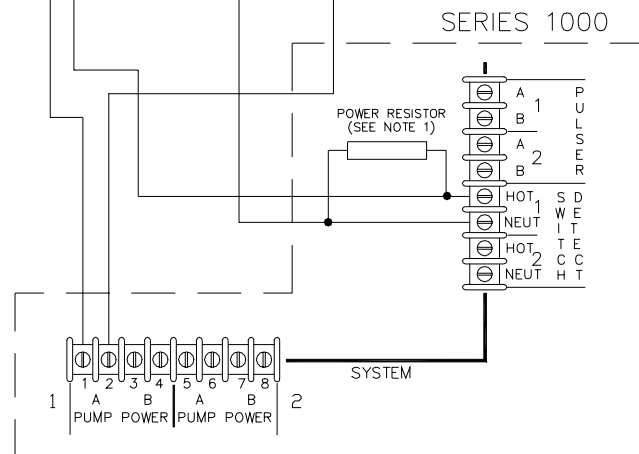


NOTES

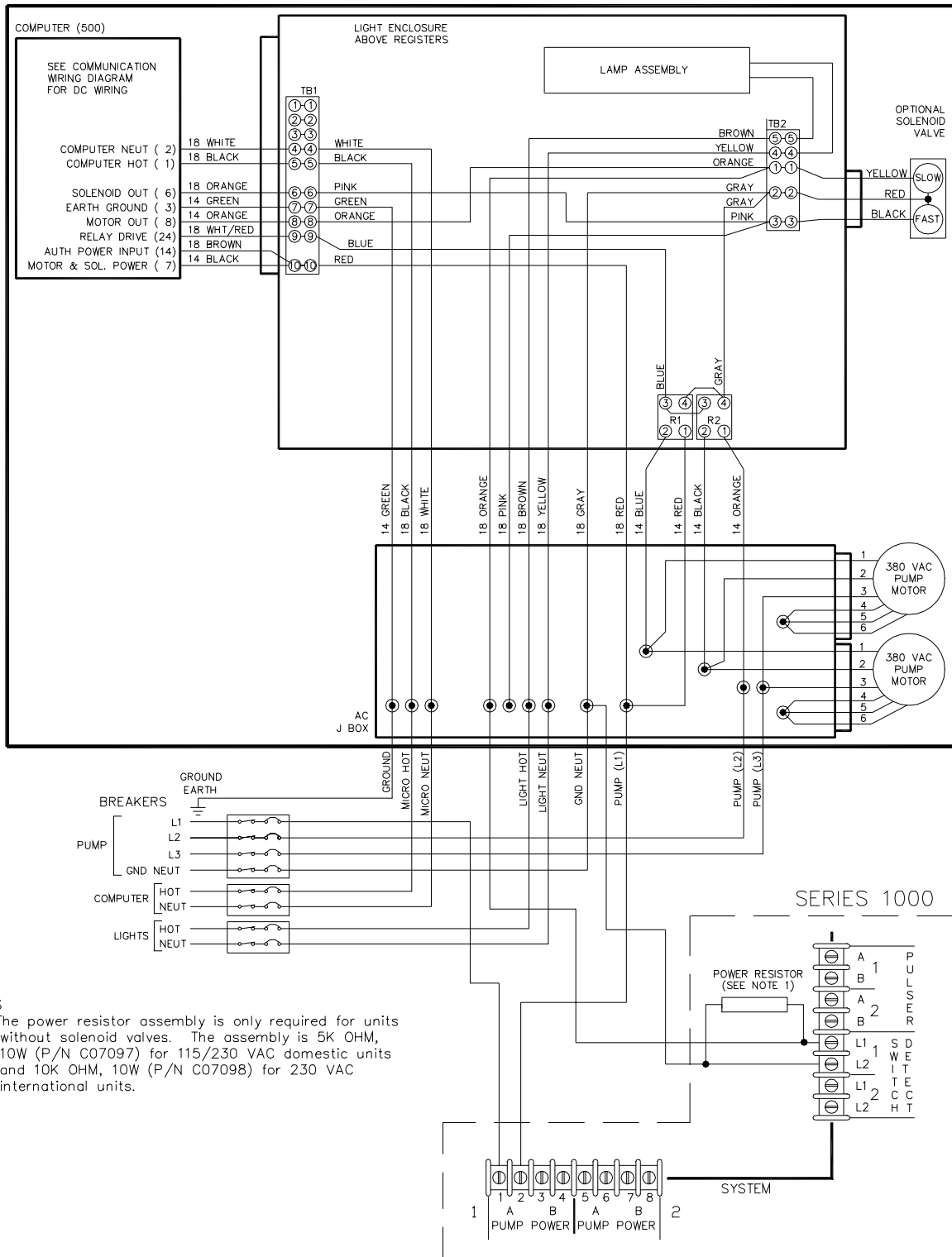
- The power resistor assembly is only required for units without solenoid valves. The assembly is 5K OHM, 10W (P/N C07097) for 115/230 VAC domestic units and 10K OHM, 10W (P/N C07098) for 230 VAC international units.



NOTE: IF UNIT IS SET FOR 115 VAC, PUMP MOTORS MUST BE WIRED FOR 230 VAC. CONNECT NEUTRAL WIRE OF MOTORS TO L2 OF 230 VAC FEED.



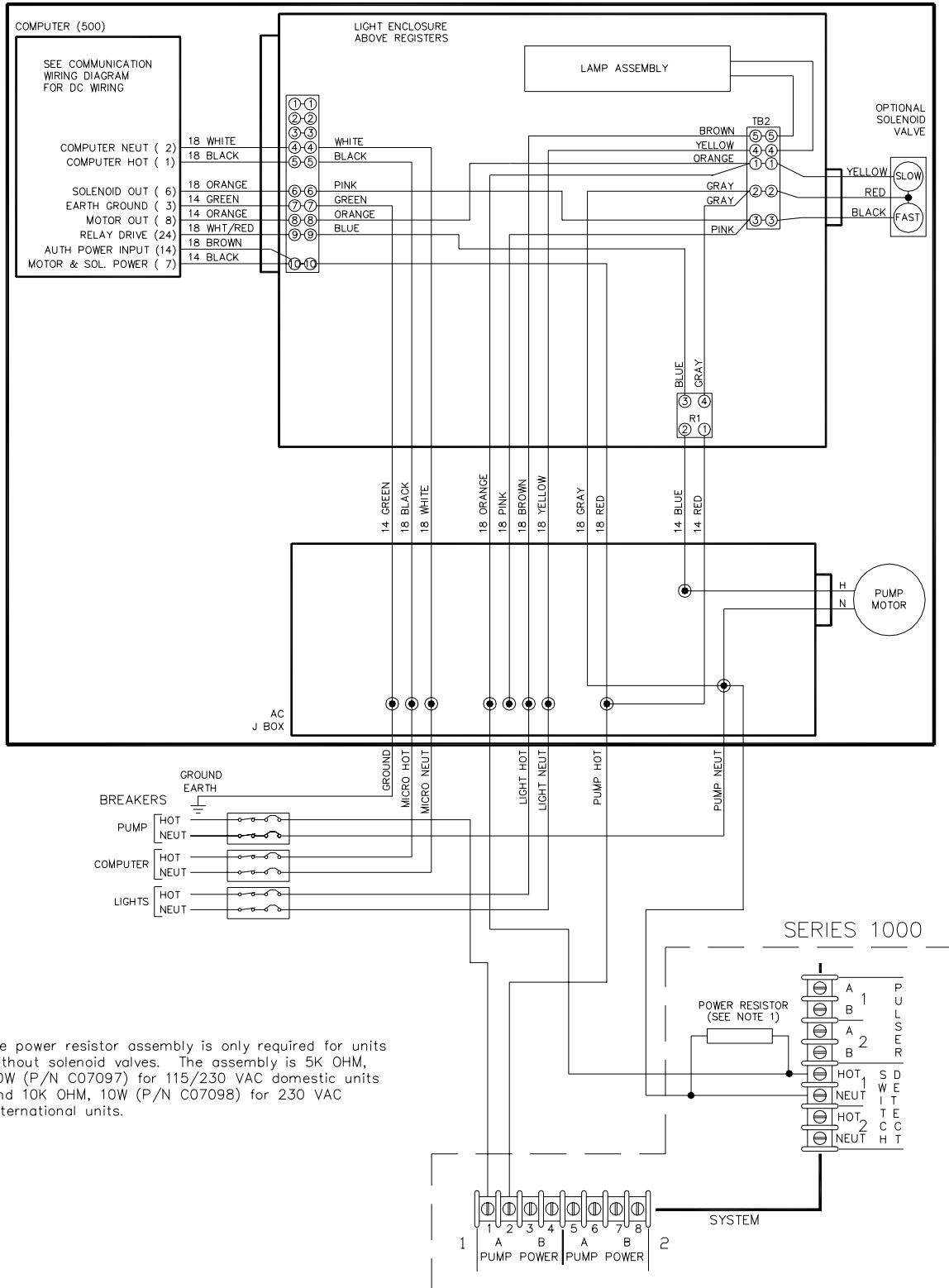
Models: 8840E 380V, 8853EHC 380V



NOTES

1. The power resistor assembly is only required for units without solenoid valves. The assembly is 5K OHM, 10W (P/N C07097) for 115/230 VAC domestic units and 10K OHM, 10W (P/N C07098) for 230 VAC international units.

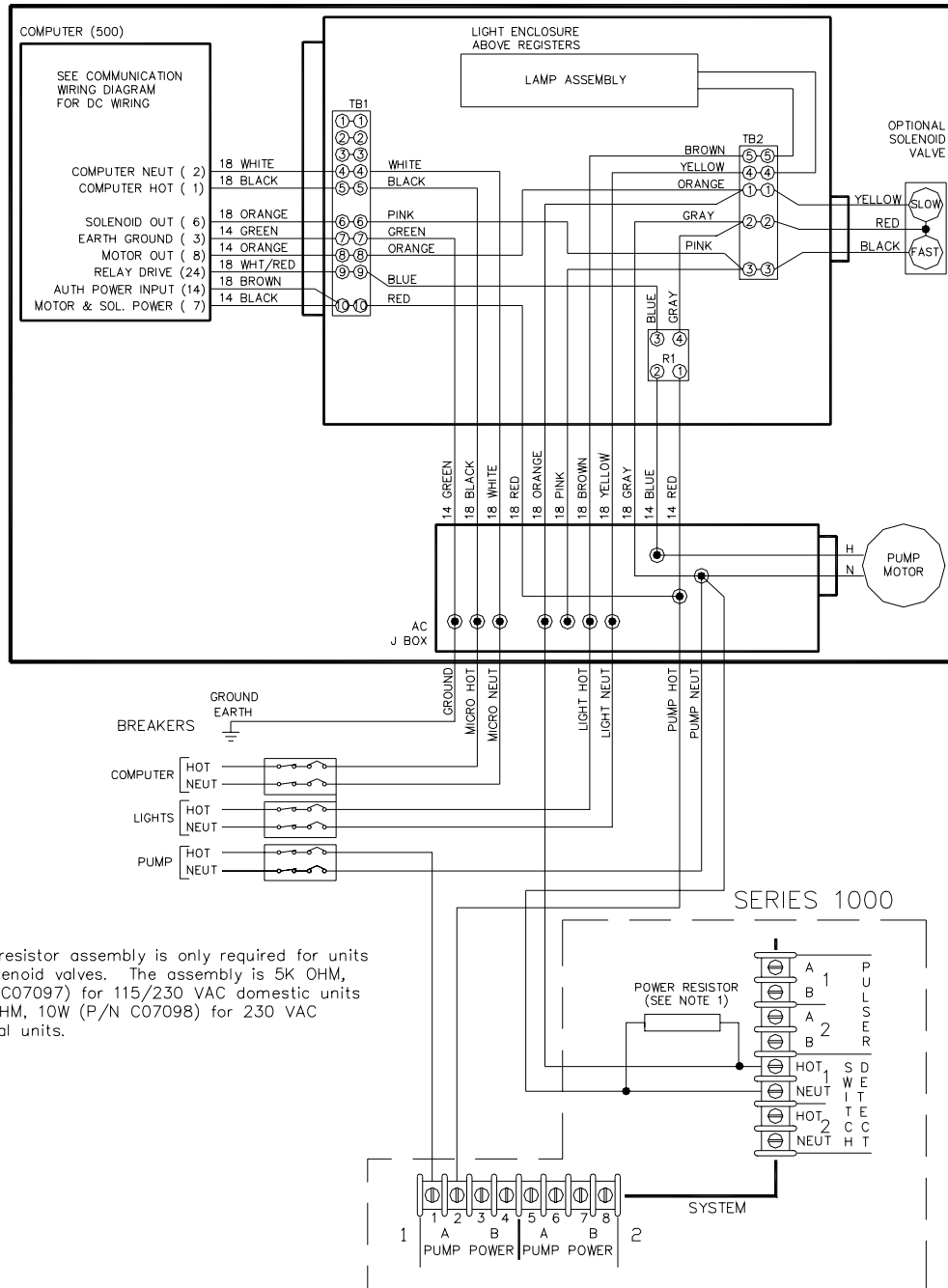
Models: 8850E



NOTES

1. The power resistor assembly is only required for units without solenoid valves. The assembly is 5K OHM, 10W (P/N C07097) for 115/230 VAC domestic units and 10K OHM, 10W (P/N C07098) for 230 VAC international units.

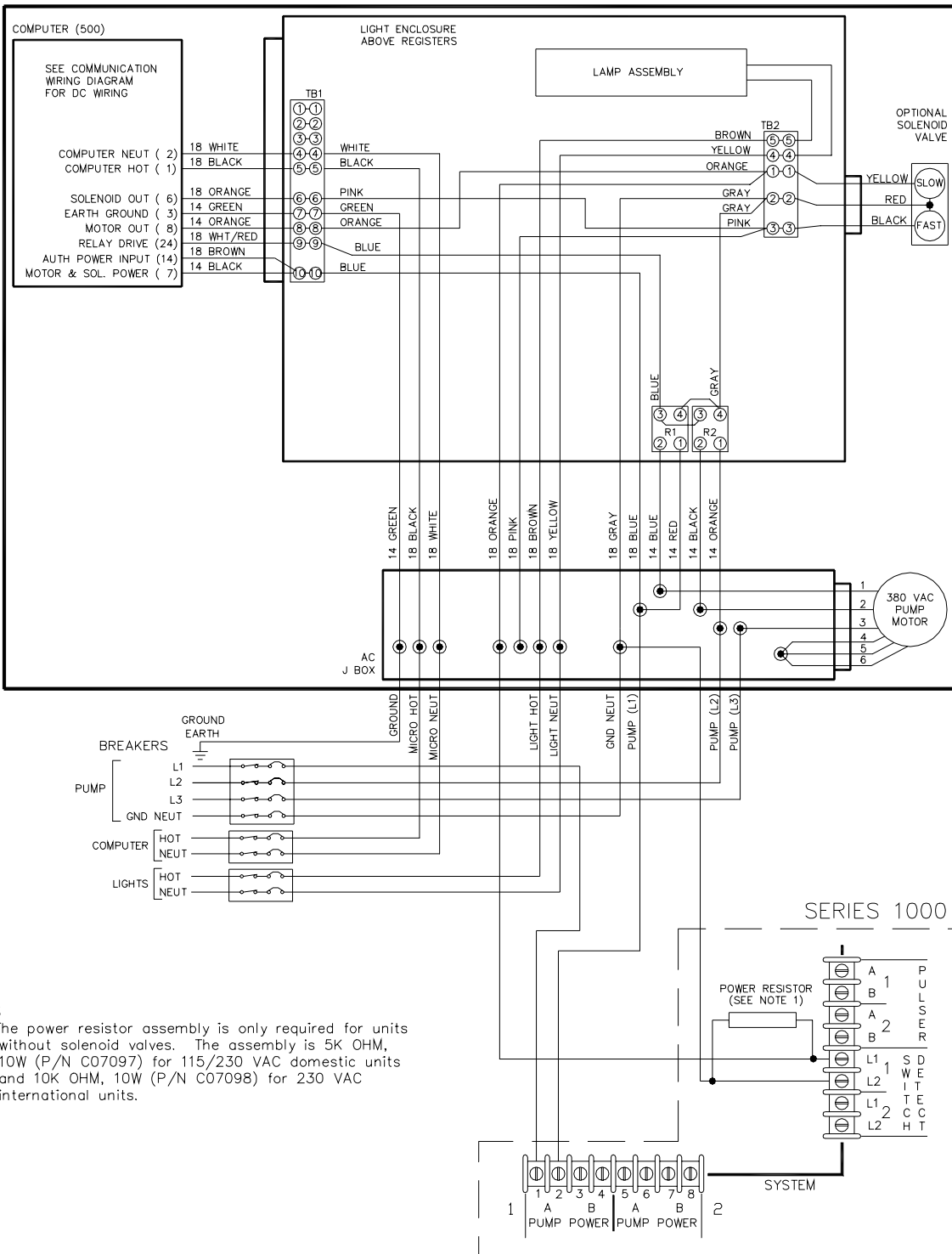
Models: 8853E



NOTES

1. The power resistor assembly is only required for units without solenoid valves. The assembly is 5K OHM, 10W (P/N C07097) for 115/230 VAC domestic units and 10K OHM, 10W (P/N C07098) for 230 VAC international units.

Models: 8853E 380V

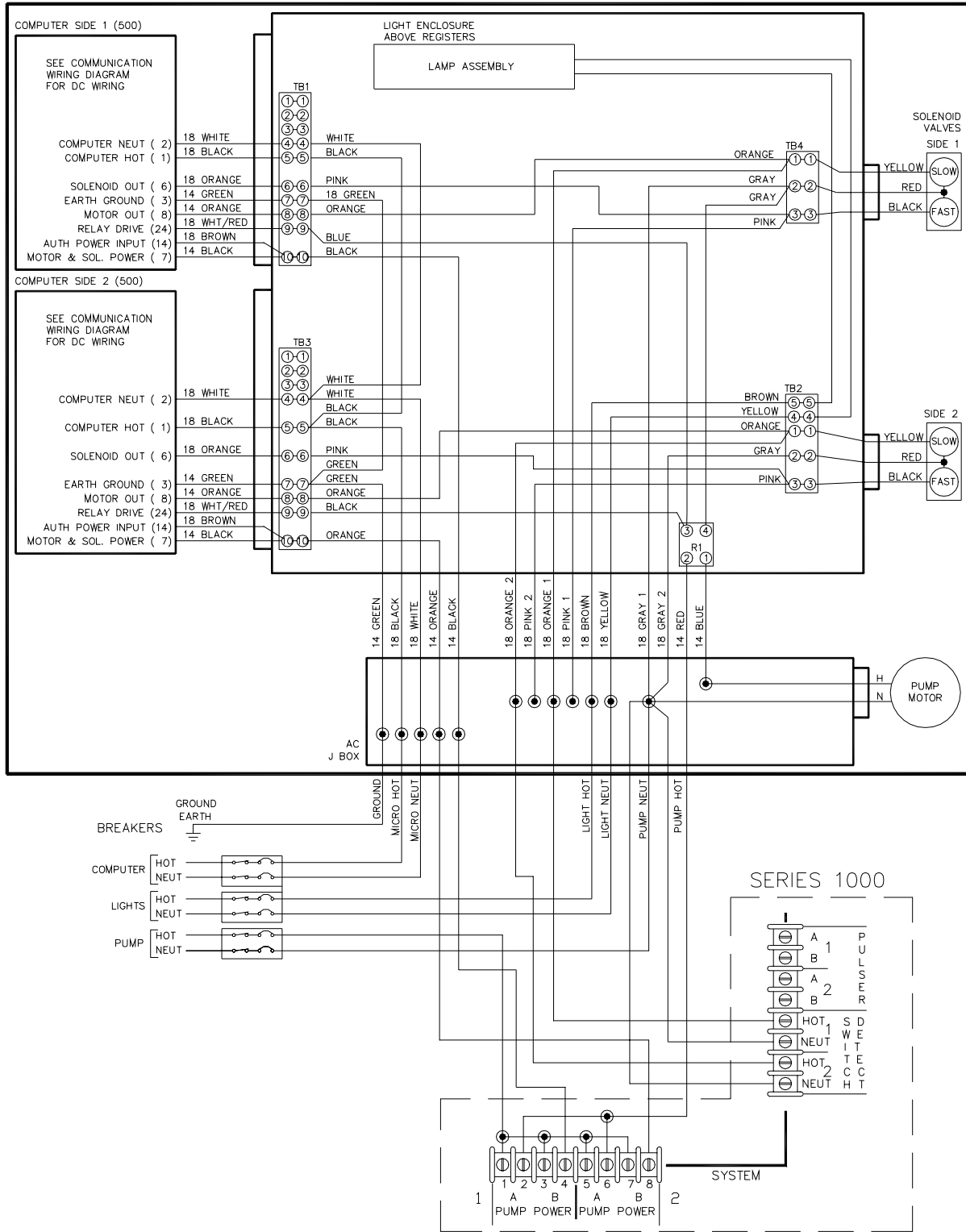


NOTES

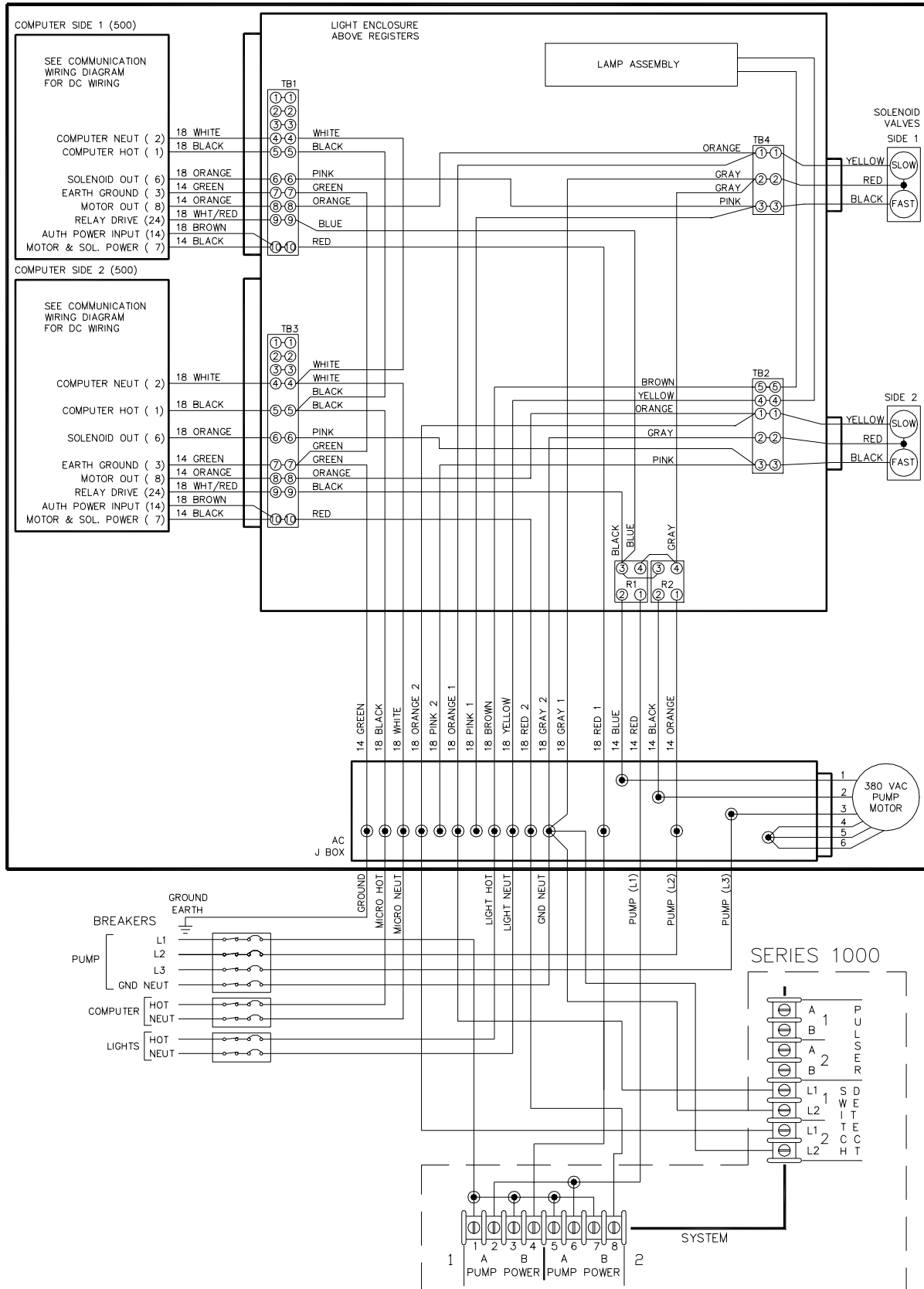
1. The power resistor assembly is only required for units without solenoid valves. The assembly is 5K OHM, 10W (P/N C07097) for 115/230 VAC domestic units and 10K OHM, 10W (P/N C07098) for 230 VAC international units.



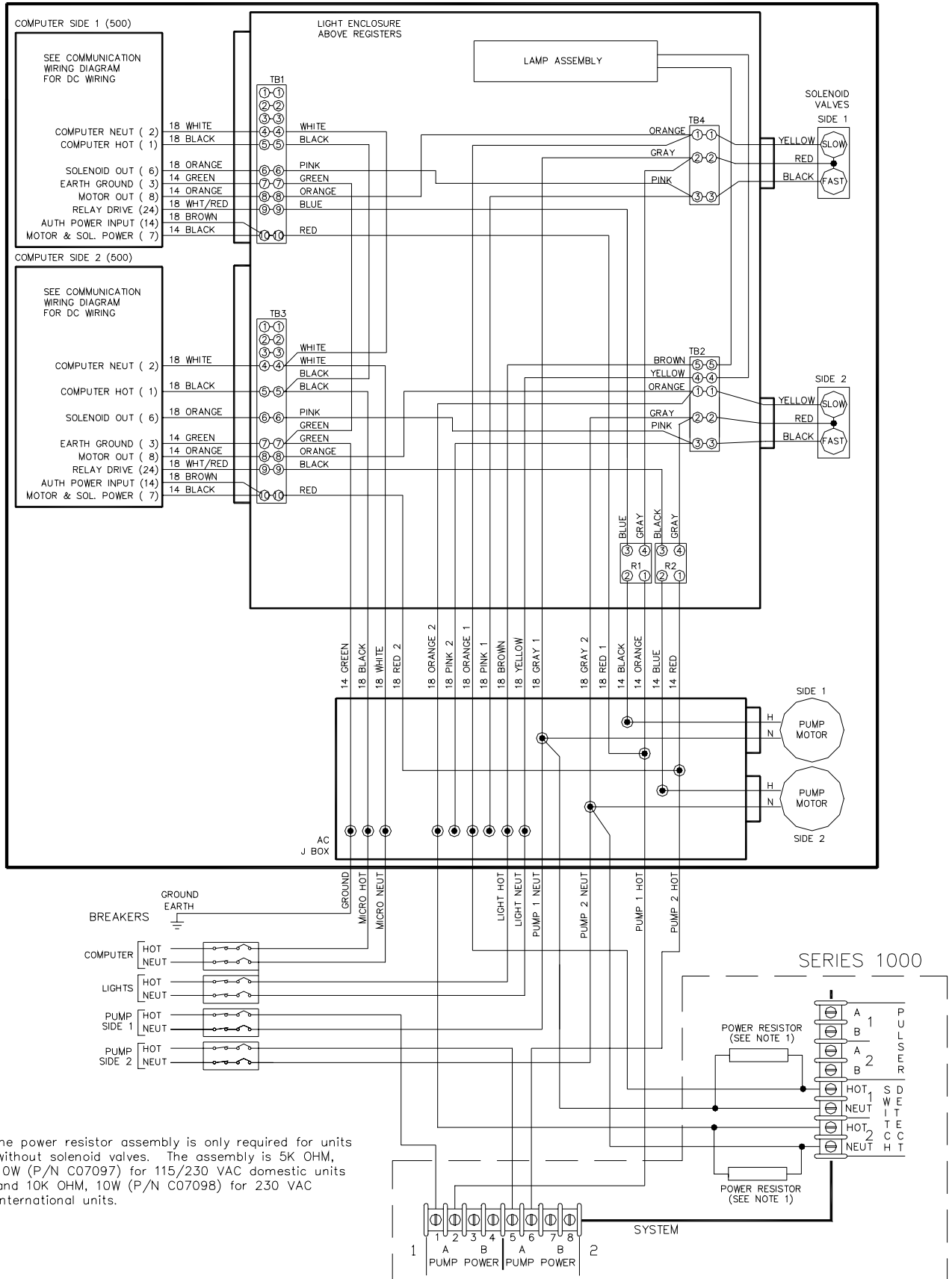
Models: 8853ETW1



Models: 8853ETW1 380V



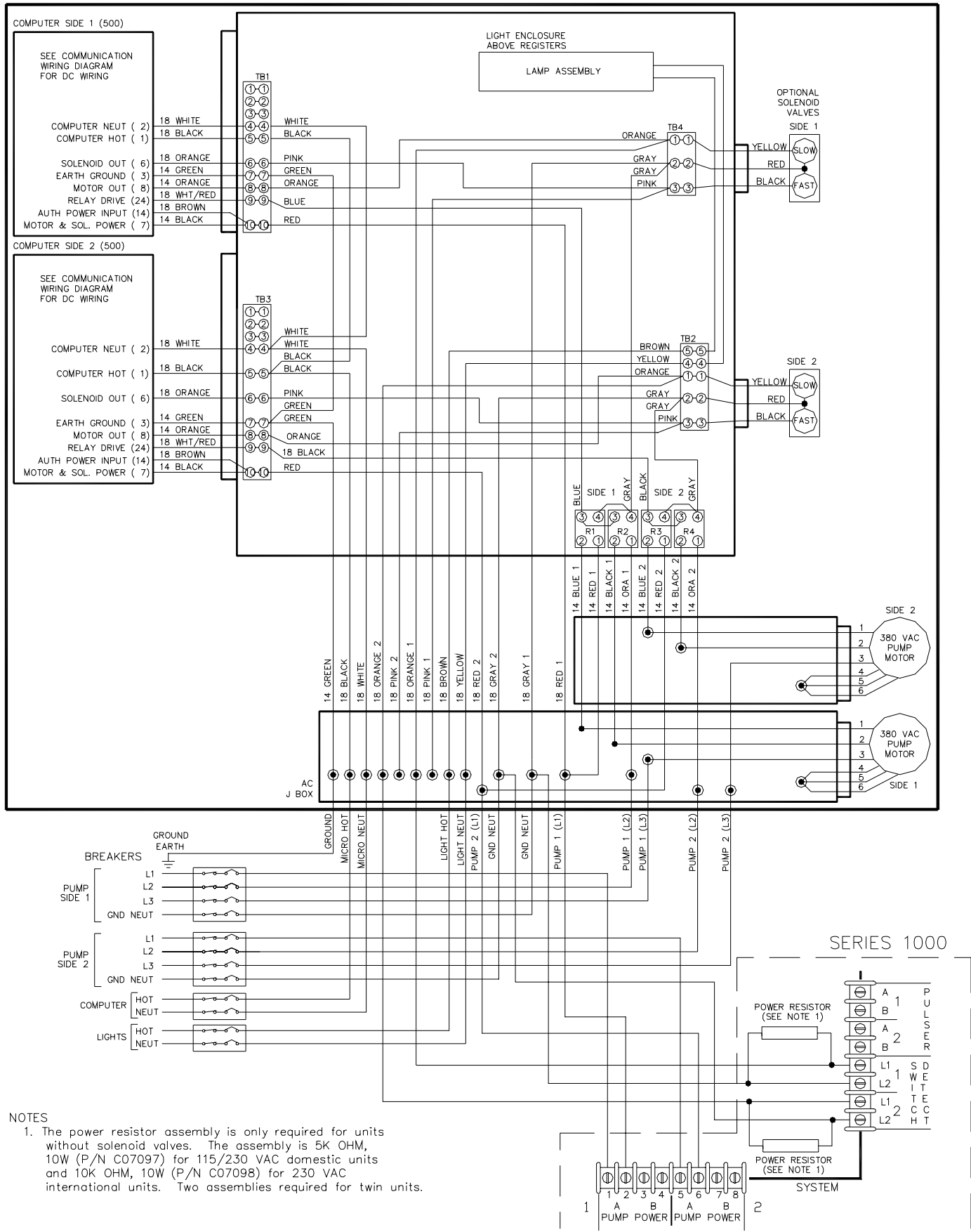
Models: 8853ETW1M, 8853ETW2



NOTES

1. The power resistor assembly is only required for units without solenoid valves. The assembly is 5K OHM, 10W (P/N C07097) for 115/230 VAC domestic units and 10K OHM, 10W (P/N C07098) for 230 VAC international units.

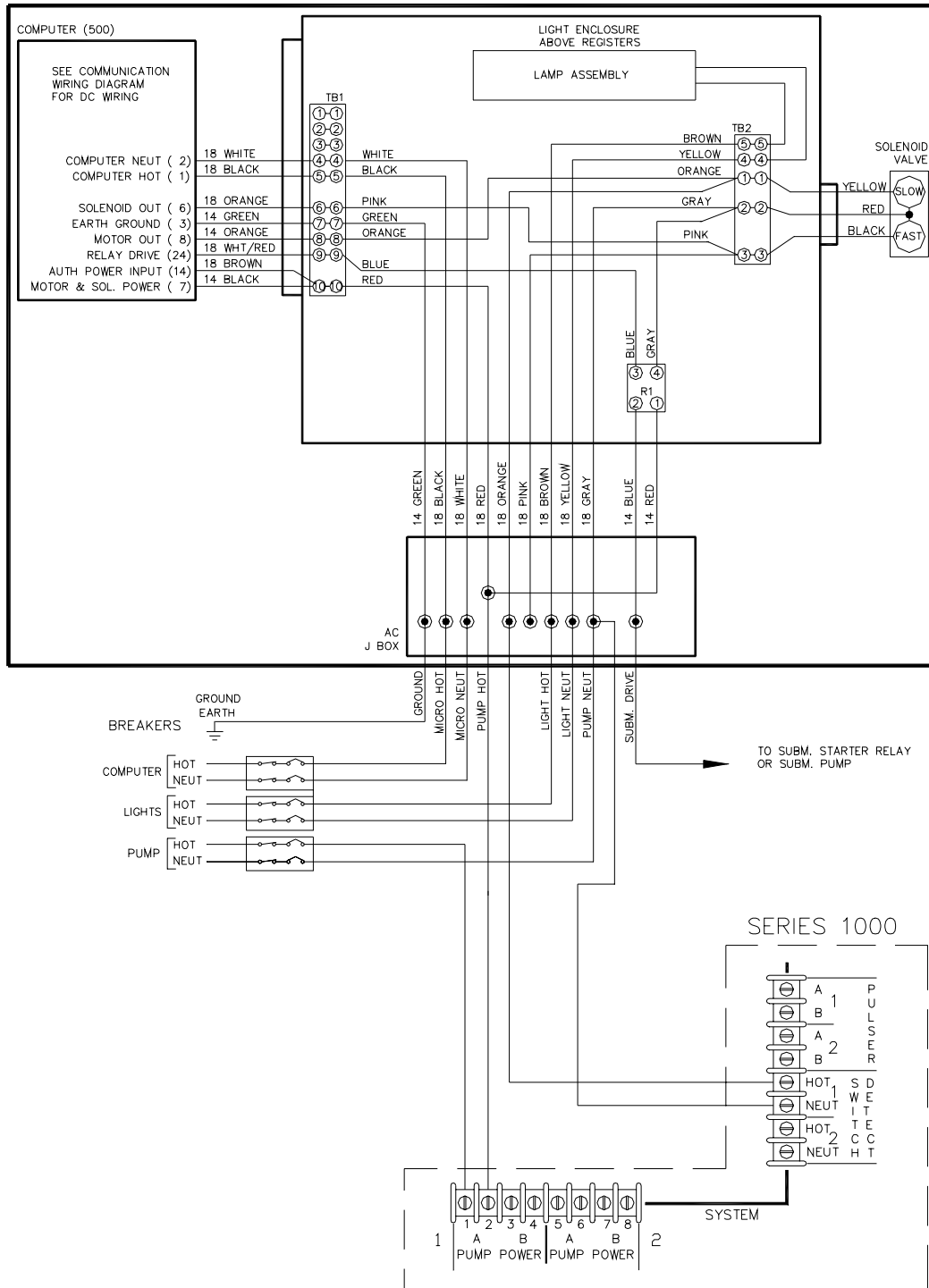
Models: 8853ETW1M 380V, 8853ETW2 380V



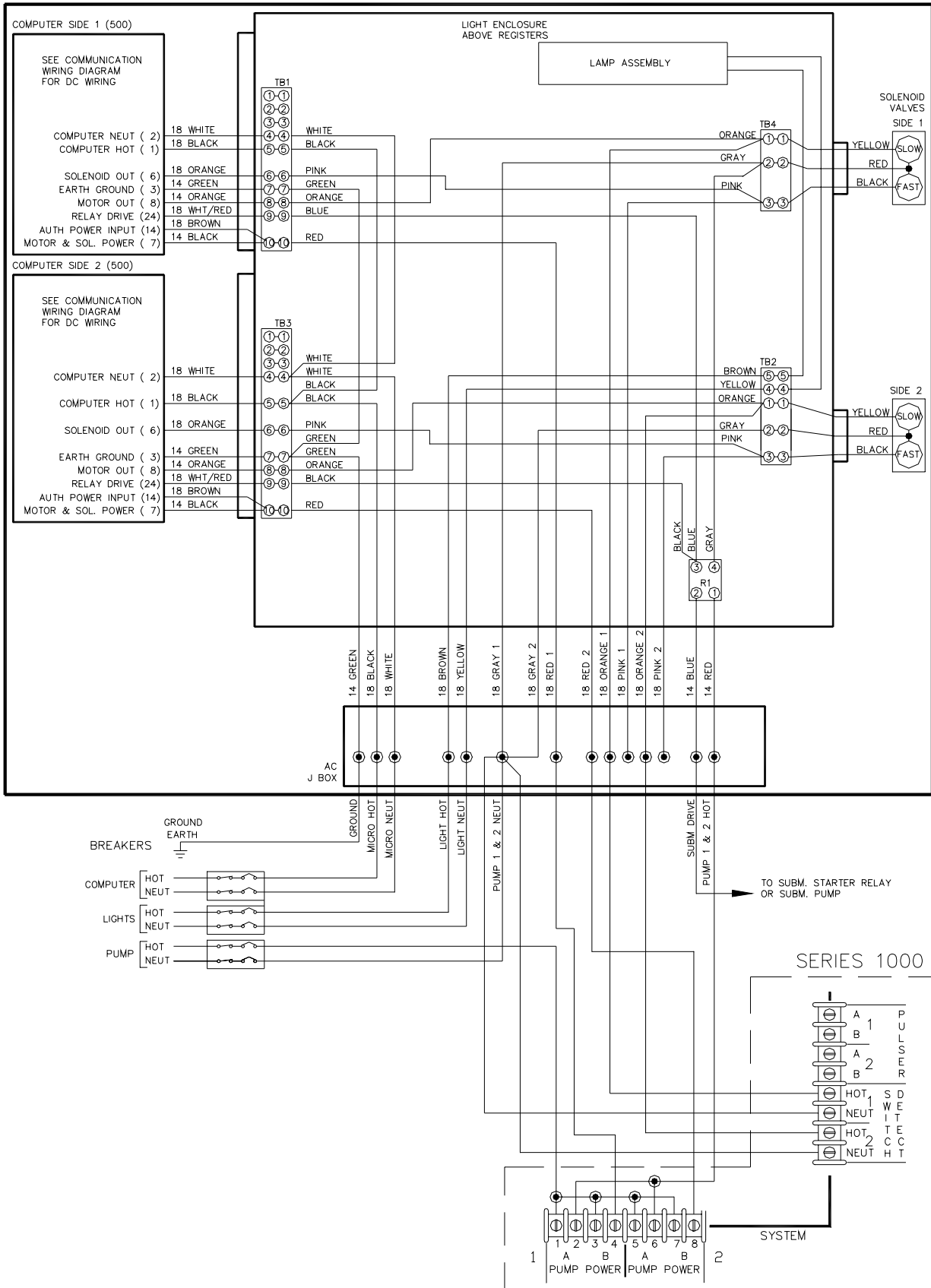
NOTES

1. The power resistor assembly is only required for units without solenoid valves. The assembly is 5K OHM, 10W (P/N C07097) for 115/230 VAC domestic units and 10K OHM, 10W (P/N C07098) for 230 VAC international units. Two assemblies required for twin units.

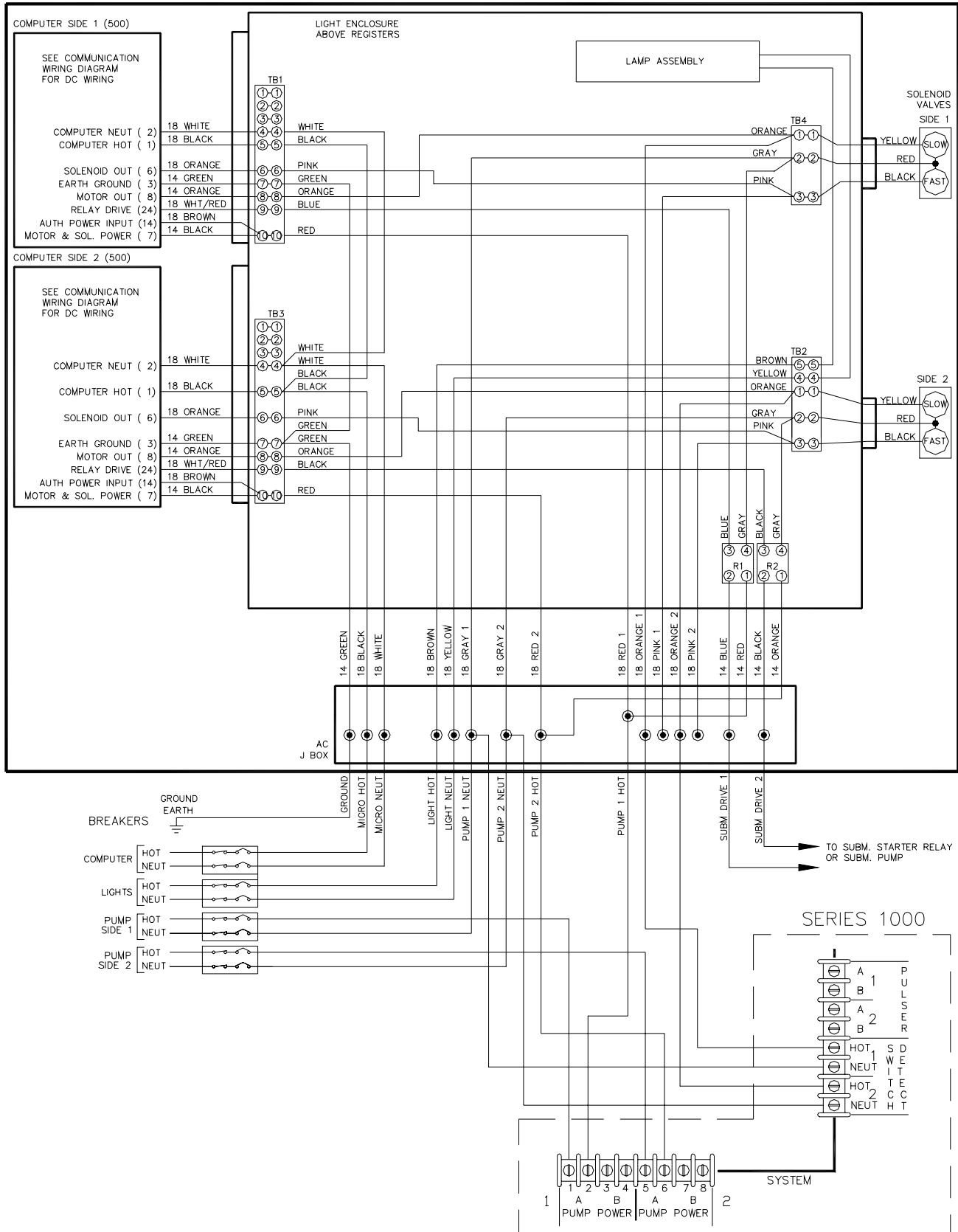
Models: 8840EX, 8850EX, 8853EX



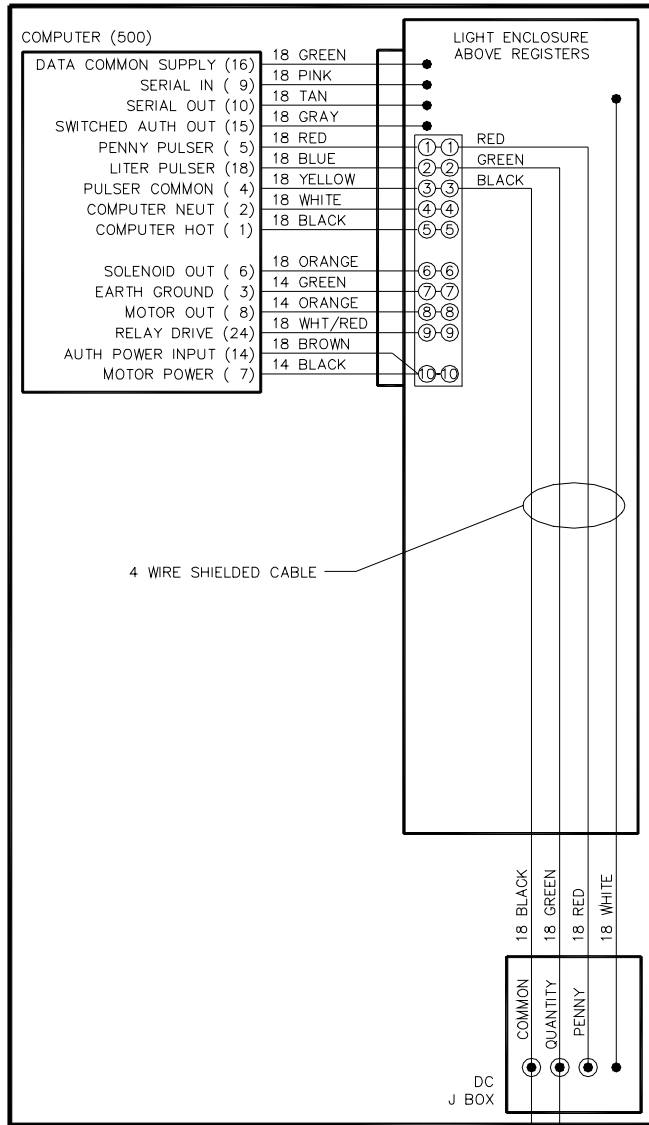
Models: 8853EXTW1



Models: 8853EXTW2



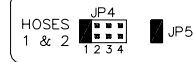
DC Wiring - Single



SERIES 1000 PUMP CONTROL  
JUMPER SETTINGS

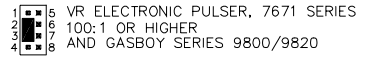
ADDRESS CONFIGURATION

- JP4 - PUMP CONTROL ADDRESS
- JP5 - 60 HZ ENABLE

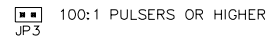


PULSER CONFIGURATION

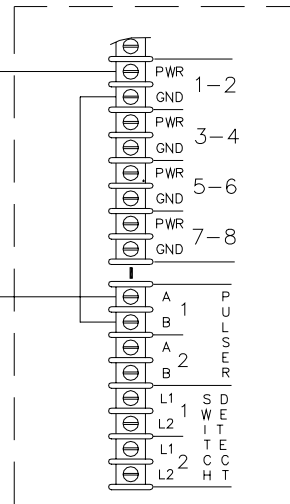
- JP1 - SIDE 1 (HOSE 1 OR 3 OR 5 OR 7)
- JP2 - SIDE 2 (HOSE 2 OR 4 OR 6 OR 8)



PULSE RATE (DEBOUNCE)

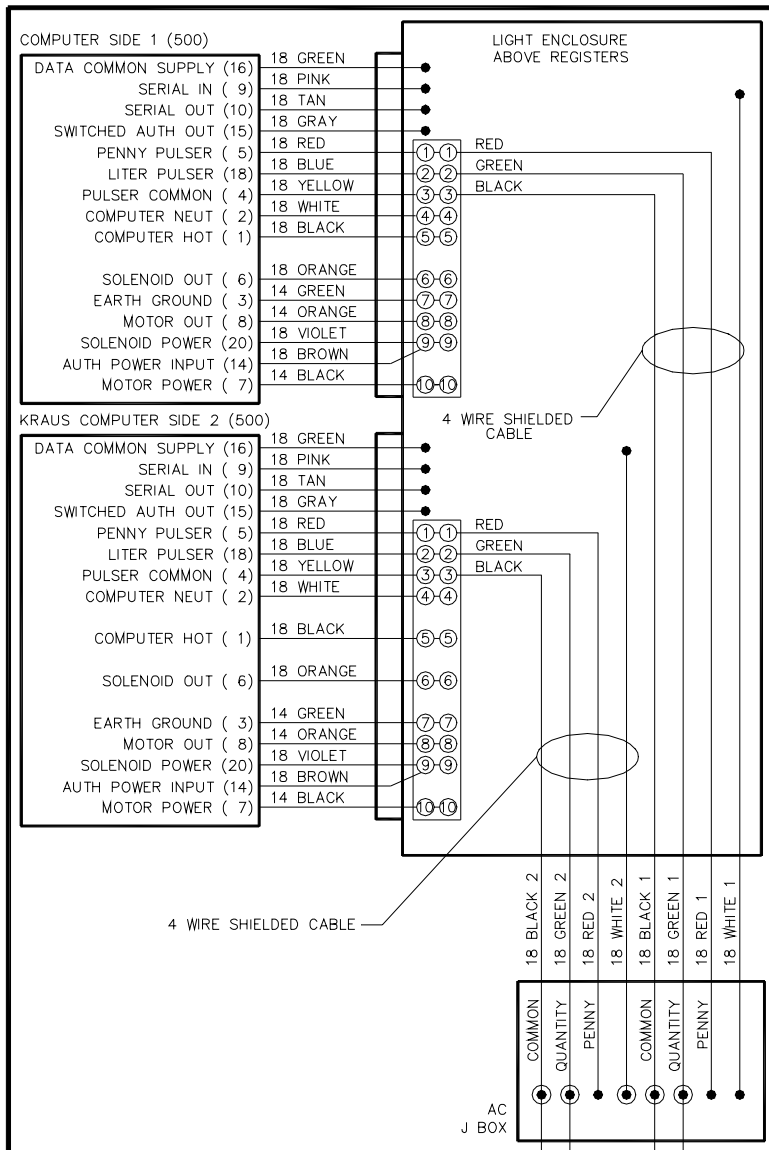


SERIES 1000





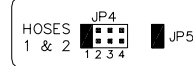
DC Wiring - Twin



SERIES 1000 PUMP CONTROL JUMPER SETTINGS

ADDRESS CONFIGURATION

JP4 - PUMP CONTROL ADDRESS  
JP5 - 60 HZ ENABLE



PULSER CONFIGURATION

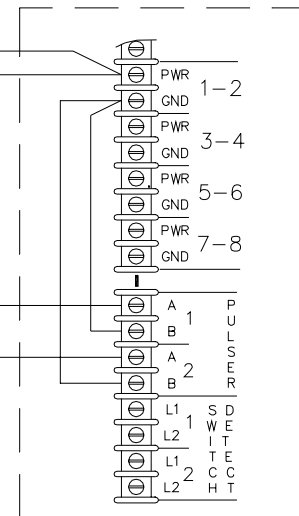
JP1 - SIDE 1 (HOSE 1 OR 3 OR 5 OR 7)  
JP2 - SIDE 2 (HOSE 2 OR 4 OR 6 OR 8)

1 2 3 4  
VR ELECTRONIC PULSER, 7671 SERIES  
100:1 OR HIGHER  
AND GASBOY SERIES 9800/9820

PULSE RATE (DEBOUNCE)

JP3 100:1 PULSERS OR HIGHER

SERIES 1000



# WARRANTY

## General Statements:

- Gasboy International LLC warrants all new equipment manufactured by Gasboy against defective material and/or workmanship, for the warranty period specified below, when the equipment is installed in accordance with specifications prepared by Gasboy.
- This warranty does not cover damage caused by accident, abuse, Acts of God, lack of surveillance of automatic recording systems, negligence, mis-application, faulty installation, improper or unauthorized maintenance, installation or use in violation of product manuals, instructions, or warnings.
- Under no circumstance shall Gasboy be liable for any indirect, special, or consequential damages, losses, or expenses to include, but not limited to, loss of product, loss of profits, litigation fees, or the use, or inability to use, our product for any for any purpose whatsoever.
- Parts Only - During the warranty period, Gasboy will, at its option, repair or replace defective parts returned transportation prepaid to its factory.
- On-Site Labor Included - Gasboy will also provide, within the Continental United States and during the warranty period, the services of an Authorized Service Representative (ASR) for on-site repair or replacement of defective parts.
- Replacement Parts - Any system components that are not part of the original system order, including Island Card Readers, Pump Control Units, etc., are considered replacement parts.

Equipment	Term	Coverage
Commercial Pumps and Dispensers Full-Cabinet Consumer Pumps	One year from date of installation or 18 mos. from date of Gasboy International's invoice to the purchaser, whichever comes first.	Parts and Labor.
Small Transfer Pumps, Meters, Pressure Regulators	One year from date of installation or 18 mos. from date of Gasboy International's invoice to the purchaser, whichever comes first.- Excepting the Model 2020 Hand Pump, which has a 90-day warranty from date of GASBOY International's invoice.	Parts Only.
Keytrol	One year from date of installation or 18 mos. from date of Gasboy International's invoice to the purchaser, whichever comes first.	Parts and Labor.
Fuel Management Systems: - CFN/ Profit Point - Series 1000/Fleetkey - TopKAT - Fuel Point Readers (sold with new systems)	One year from date of start-up or 15 mos. from date of Gasboy International's invoice to the purchaser, whichever comes first.- The basic warranty only applies to systems which have been started up by a Gasboy Authorized Service Representative (ASR).	Parts and Labor.
Additional Fuel Point Items: - Fuel Point Readers sold for retrofitting existing systems. - Fuel Point vehicle and dispenser components.	One year from date of start-up or 15 mos. from date of Gasboy International's invoice to the purchaser, whichever comes first.	Parts Only.
Encoders, Embossers, Modems, CRTs, and Logger Printers	Purchased with Fuel Management System (Encoders, Embossers only): 90 days from the date of start-up by a Gasboy ASR, or 180 days from date of Gasboy International's invoice, whichever occurs first.  Purchased with Fuel Management System (Modems, CRTs, and Logger Printers only): Matches system warranty.  Purchased Separately: 90 days from date of Gasboy International's invoice to the purchaser.	Purchased with System (Encoders, Embossers only): Parts only.  Purchased with System (Modems, CRTs, Logger Printers only): Matches system warranty.  Purchased Separately: Parts Only.
Air Diaphragm Pumps	Three years from date of purchase (for full warranty description, see Price List).	Parts Only.
Items not manufactured by Gasboy (ex. automatic nozzles, hoses, swivels, etc.)	Not warranted by Gasboy International (consult original manufacturer's warranty).	Not Applicable.
Replacement Parts	One year from date of Gasboy International's invoice to the purchaser.	Parts Only.

To the extent permitted by law, this warranty is made in lieu of all other warranties, expressed or implied, including warranties of freedom from patent infringement, or merchantability, or fitness for a particular purpose, or arising from a course of dealing or usage of trade. No one is authorized to vary the terms of the warranty nor may anyone make any warranty of representation, or assume any liability other than that herein stated, in connection with the sale described herein. The acceptance of any order by Gasboy International is expressly made subject to the purchaser's agreement to these conditions.



**GASBOY INTERNATIONAL LLC**

P.O. Box 309, Lansdale, PA 19446 ● (800) 444-5579 ● FAX: (800) 444-5569 ● [www.gasboy.com](http://www.gasboy.com)