



Invenco Edge IoT Host

The Invenco® Edge is a secure, connected IoT device designed to host site level software services for various retailing and commercial applications.

The Invenco Edge device was designed and manufactured internally, from the ground up to provide a secure environment that retailers can use to migrate from existing, monolithic, legacy systems to a more modern, secure, and agile system implementations.

With Edge, business are positioned to quickly and securely implement new payment processors and technologies, energy delivery (EV, CNG, Hydrogen) systems, customer engagement solutions and more.

Lightweight and ultra reliable, the Invenco Edge delivers cloud enabled c-store microservice applications which are faster and more secure than ever.

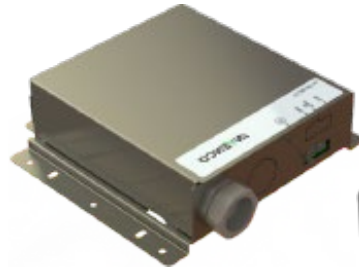
KEY FEATURES

- Fanless , hardened design built for 24/7 operations
- Built on industry leading and secure Sequoia 5 OS operating system
- Truly secure and encrypted, with PCI® approved TLS connections
- Cloud connected and managed
- Designed to keep out unwanted malware by running only digitally signed applications
- Ability to add additional IO modules which talk to nearly any pump, automatic tank gauge, price sign, and/or car wash in the world

KEY BENEFITS

- Give retailers a store platform with both agility and security in ONE device
- Enables retailers to add functionalities when needed, whatever those may be
- Maintains the highest industry standard levels of security throughout system upgrades and expansions
- When used with iNFX microservice solutions, provides almost limitless capabilities to drive new payment flows, device integrations and customer engagement solutions
- Allows the retailer, not the vendor to set roadmaps and the pace of innovations

Invenco Edge SPECIFICATIONS



General

Application Processor	Dual core processor
Operating System	Secure Sequoia 5 OS (based on Linux)
Memory	1GB RAM + 4GB FLASH or 2GB RAM + 64GB FLASH
GPIO	4 x individually configurable GPIO (5V)
Buzzer	Inbuilt buzzer for feedback
Power Output	Up to 2 x switchable 24V output Rated for up to 72W each
Port	1 x 5 wire RS232 port (Tx, Rx, RTS, CTS, DCD), RJ 45 connector 1 x 8 wire ethernet port, RJ 45 connector 4 x USB Type A 2.0 1 x USB Type B 2.0
Operating Temperature (powered)	-25°C to + 70°C 5 to 95% RH (non-condensing)
Storage Environment	-40°C to +80°C 20 to 80% RH (non-condensing) Store units in a dry covered location
Power Supply	Voltage +24V 310%
Size	27cm (w) + 15.1cm (h) x 4cm (d)

UNDERSTAND THE INVENCO DIFFERENCE

Invenco by GVR brings together Gilbarco Veeder-Root's (GVR) time-tested Retail Solutions business with best-in-class technology from recently acquired Invenco.

As a global leader in the payments and c-store industries, Invenco by GVR aims to be the operating system for convenience retail, by providing retailers with agile technology solutions that will allow them to increase productivity and drive consumer engagement.

©2023 Invenco Group, LTD. All rights reserved. INVENCO FlexPay 6 A2-09-, and the Invenco logo are trademarks of Invenco Group, LTD. and/or its subsidiaries.

©2023 Invenco Group, LTD. All rights reserved. INVENCO Edge IoT Host-, and the Invenco logo are trademarks of Invenco Group, LTD. and/or its subsidiaries.

P-2826