

# HydrX™ Fuel Conditioner Offset Mounting Bracket



## Installation Instructions

### Notice and Disclaimer

- **VEEDER-ROOT SHALL NOT BE LIABLE FOR ERRORS CONTAINED HEREIN OR FOR ANY TYPE OF DAMAGES IN CONNECTION WITH THE FURNISHING, PERFORMANCE, OR USE OF THIS PUBLICATION.**
- Veeder-Root makes no representation or warranty about the information in this publication. A qualified professional is required for service of the components addressed in this publication.
- The information in this publication cannot be used as a substitution for the knowledge and experience of a qualified professional.
- The information contained in this publication is merely for the consideration of a qualified professional, which should make their own determination of how to address any issues based on the situation.
- Veeder-Root reserves the right to change system options or features, or the information contained in this publication, at any time without notice.
- This publication contains proprietary information which is protected by copyright. All rights reserved. No part of this publication may be photocopied, reproduced, or translated to another language without the prior written consent of Veeder-Root.
- Contact TLS Systems Technical Support for additional troubleshooting information at 800-323-1799.

### CONTRACTOR CERTIFICATION REQUIREMENTS

Veeder-Root requires the following minimum training certifications for contractors who will install and setup the equipment discussed in this manual:

**Service Technician Certification (Previously known as Level 2/3):** Contractors holding valid Technician Certifications are approved to perform installation checkout, startup, programming and operations training, system tests, troubleshooting and servicing for all Veeder-Root Series Tank Monitoring Systems, including Line Leak Detection.

**TLS-4xx Technician Certification:** Contractors holding valid TLS-450 Technician Certifications are approved to perform installation checkout, startup, programming and operations training, troubleshooting and servicing for all Veeder-Root TLS-450 Series Tank Monitoring Systems, including Line Leak Detection and associated accessories.

**Warranty Registrations** may only be submitted by selected Distributors.

### SAFETY WARNINGS AND PRECAUTIONS

**FAILURE TO COMPLY WITH THE FOLLOWING WARNINGS AND SAFETY PRECAUTIONS COULD RESULT IN SERIOUS INJURY OR DEATH, AND/OR CAUSE DAMAGE TO PROPERTY, AND THE ENVIRONMENT.**

**THIS SYSTEM OPERATES NEAR HIGHLY COMBUSTIBLE FUEL STORAGE TANKS.**

**EXPLOSIVE:** Fuels and their vapors are extremely explosive if ignited.

**FLAMMABLE:** Fuels and their vapors are extremely flammable.

**READ ALL RELATED MANUALS:** Knowledge of all related procedures before you begin work is important. Read and understand all manuals thoroughly. If you do not understand a procedure, ask someone who does.

**USE SAFETY BARRICADES:** Unauthorized people or vehicles in the work area are dangerous. Always use safety cones or barricades, safety tape, and your vehicle to block the work area.

**APPROVED CONTAINER:** Use a nonbreakable, clearly marked container, suitable for collecting and transporting hazardous fuels during service.

**NOTICE:** Indicates information considered important, but not hazard-related.

### GENERAL PRECAUTIONS

1. Read and follow all instructions in this manual, including all safety procedures, local and federal guidelines.
2. Have equipment installed by a contractor trained in its proper installation and in compliance with all applicable codes including: National Electrical Codes 70 and 30A; federal, state, and local codes; and other applicable safety codes.
3. Do not modify or use service parts other than those provided by Veeder-Root.

**Reference Documents:** Manual 577014-446

**Suggested Equipment:** V-R kit# 330020-893; a 1/2" drive ratchet and 9/16" socket.

## INSTALLATION PROCEDURE

1. Lower HydrX into the sump and position it in the desired location.
2. Slide 2 nuts from kit 330020-893 into the lower mounting rail of the Hydrx FC. (see Figure 1).

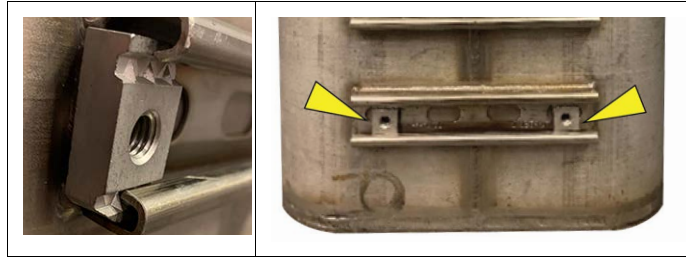


Fig. 1

3. Get one of the extension rails, two bolts and washers from kit 330020-893 and prep the bolt threads with grease (see Figure 2).



Fig. 2

4. Align the two nuts that were slid into the HydrX integral rail with the appropriate holes in the extension rail and start the threads of the bolts (see Figure 3 for positioning).

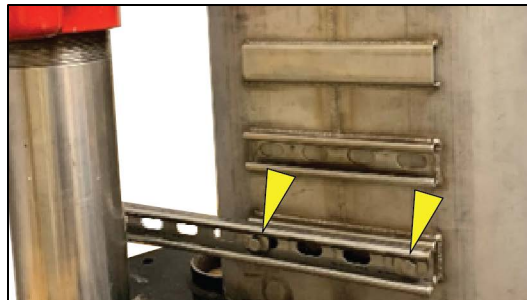


Fig. 3

5. With the extension rail aligned over the HydrX integral rail, use a ratchet and 9/16" socket to tighten the two bolts securely (Figure 4).



Fig. 4

6. Repeat steps 2-5 for upper rail.
7. Get the two 4" riser clamp assemblies from the HydrX install kit (clamp halves, nuts, bolts) and slide the notched end of the clamp into the extension rail on either side of the riser and tighten bolt, repeat for both clamps.
8. Completed installation shown in Figure 5.



**Fig. 5**

For additional assistance, please contact Veeder-Root Technical Support by phone at 800-323-1799 or by email to [technical-support@veeder.com](mailto:technical-support@veeder.com).