

# End of Life Notification

Open Frame Registers, Electronic Knockoffs, and Pulse Totalizers

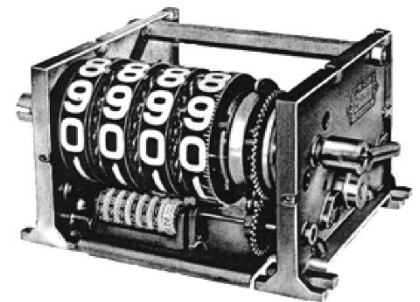
## Overview

Veeder-Root will be offering a last time buy on the following Mechanical products. These products have reached the point in their sales cycle where manufacturing them is not feasible due to low demand and increased cost to maintain older technologies.

### ► Impacted Equipment

#### Open Frame Register 1623 Series

Description
Base Model
Base Model w/ Pointer
Base Model w/ Pointer and Shutter
Base Model w/ Pointer and Interlock
Base Model w/ Shutter
Base Model w/ Shutter, Interlock and Pointer



**Note:** Prices are basic List Price, contact Customer Service for specific model pricing.

#### Electric Knockoffs

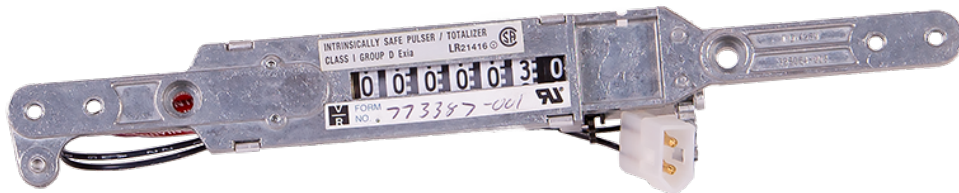
Part Number	Description
0312020-435	2-Stage Elect. Knockoff Switch Kit, UL/CSA w/ 4 SPDT, w/Handle
0312020-436	2-Stage Elect. Knockoff Switch Kit, UL/CSA w/ 4 SPDT, w/ out Handle
0370020-048	2-Stage Elect. Knockoff Switch Kit, EEC w/ 4 SPDT, w/ Handle
0785660-001	Preset Knockoff SW.4SPDT



## ► Impacted Equipment (Continued)

### Pulse Totalizers





Part Number	Description
0773386-002	Pulse Totalizer – 50 PPR RHW
0773387-001	Pulse Totalizer – 25 PPR RHW
0785991-001	Barrier Circuit for Totalizers Above – (for UL applications)
0787491-003	Quantity (Volume) Pulse Transactions (MDIM)
0074800-155	Washer .163X.005X.375



## ► Order Requirements

**Customer Service must receive last time buy orders on the part numbers in this notification no later than May 28, 2021.**  
Please contact Customer Service at [neworders@veeder.com](mailto:neworders@veeder.com).

### Support

-  1.800.323.1799 – Technical Support
-  1.800.873.3313 – Customer Service
-  1.800.234.5350 – Customer Service
-  [customerservice@veeder.com](mailto:customerservice@veeder.com)

