

## Draining Instructions

### Notice and Disclaimer

- **VEEDER-ROOT SHALL NOT BE LIABLE FOR ERRORS CONTAINED HEREIN OR FOR ANY TYPE OF DAMAGES IN CONNECTION WITH THE FURNISHING, PERFORMANCE, OR USE OF THIS PUBLICATION.**
- Veeder-Root makes no representation or warranty about the information in this publication. A qualified professional is required for service of the components addressed in this publication.
- The information in this publication cannot be used as a substitution for the knowledge and experience of a qualified professional.
- The information contained in this publication is merely for the consideration of a qualified professional, which should make their own determination of how to address any issues based on the situation.
- Veeder-Root reserves the right to change system options or features, or the information contained in this publication, at any time without notice.
- This publication contains proprietary information which is protected by copyright. All rights reserved. No part of this publication may be photocopied, reproduced, or translated to another language without the prior written consent of Veeder-Root.
- Contact TLS Systems Technical Support for additional troubleshooting information at 800-323-1799.

### CONTRACTOR CERTIFICATION REQUIREMENTS

Veeder-Root requires the following minimum training certifications for contractors who will install and setup the equipment discussed in this manual:

**Service Technician Certification (Previously known as Level 2/3):** Contractors holding valid Technician Certifications are approved to perform installation checkout, startup, programming and operations training, system tests, troubleshooting and servicing for all Veeder-Root Series Tank Monitoring Systems, including Line Leak Detection.

**TLS-4xx Technician Certification:** Contractors holding valid TLS-450 Technician Certifications are approved to perform installation checkout, startup, programming and operations training, troubleshooting and servicing for all Veeder-Root TLS-450 Series Tank Monitoring Systems, including Line Leak Detection and associated accessories.

**Warranty Registrations** may only be submitted by selected Distributors.

### SAFETY WARNINGS AND PRECAUTIONS

**FAILURE TO COMPLY WITH THE FOLLOWING WARNINGS AND SAFETY PRECAUTIONS COULD RESULT IN SERIOUS INJURY OR DEATH, AND/OR CAUSE DAMAGE TO PROPERTY, AND THE ENVIRONMENT.**

**THIS SYSTEM OPERATES NEAR HIGHLY COMBUSTIBLE FUEL STORAGE TANKS.**

**EXPLOSIVE:** Fuels and their vapors are extremely explosive if ignited.

**FLAMMABLE:** Fuels and their vapors are extremely flammable.

**READ ALL RELATED MANUALS:** Knowledge of all related procedures before you begin work is important. Read and understand all manuals thoroughly. If you do not understand a procedure, ask someone who does.

**USE SAFETY BARRICADES:** Unauthorized people or vehicles in the work area are dangerous. Always use safety cones or barricades, safety tape, and your vehicle to block the work area.

**APPROVED CONTAINER:** Use a nonbreakable, clearly marked container, suitable for collecting and transporting hazardous fuels during service.

**NOTICE:** Notice is used to address practices not related to physical injury.

**Reference Documents:** Manual 577014-466, 577014-446

**Suggested Equipment:** V-R kit# 330020-880 and approved 5-gallon container to receive fuel contaminated waste water.

### PROCEDURE

#### NOTICE Tag, lockout power to the STP.

1. Close STP Adapter ball valve to isolate the FC unit from the pump (see Figure 1).
2. Get the drain hose from the kit (see Figure 2) and attach the quick connect end of the hose to the waste water drain connector, marked 'D' on top of the FC manifold.

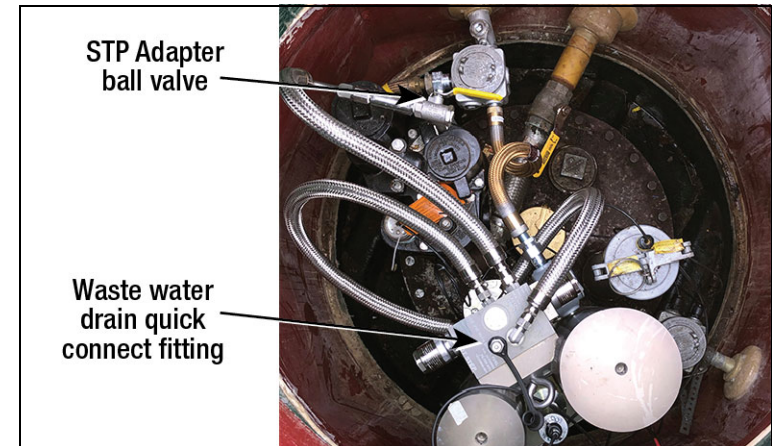


Figure 1.

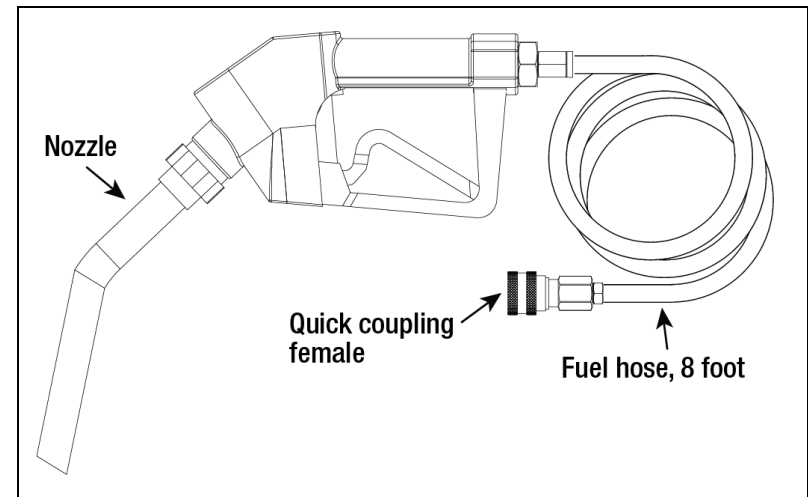


Figure 2.

3. Turn on power to the STP and re-open the pump STP Adapter ball valve.

- At the Fuel Conditioning Controller front panel, touch the Service button to open the Service Home screen (see Figure 3).

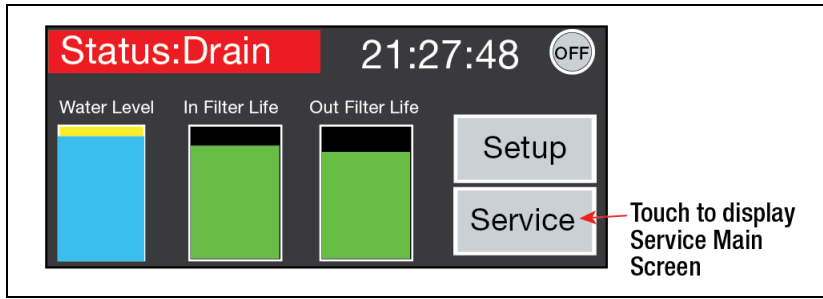


Figure 3.

- Touch the Auto Drain button (see Figure 4).
- Place the nozzle into the approved waste water container and open the nozzle to fill the five gallon tank.

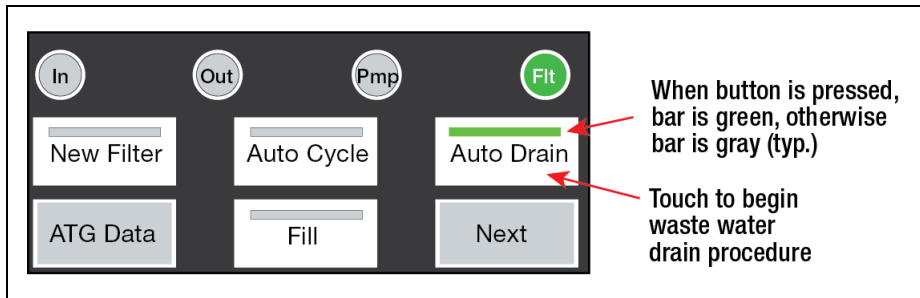


Figure 4.

- After filling the container, or until the draining automatically stops (the float is on the bottom of the tank), release the hose nozzle. and close the STP Adapter ball valve.
- Turn off power to the STP.
- Disconnect the drain hose from the FC Drain port and replace the cap on the drain fitting.
- Turn on power to the STP.
- Re-open the STP Adapter ball valve.

For additional assistance, please contact Veeder-Root Technical Support by phone at 800-323-1799 or by email to [technicalsupport@veeder.com](mailto:technicalsupport@veeder.com).