



9120K and 9820K Series AST Pumps

---

# Service and Parts Manual

## Computer Programs and Documentation

All Gasboy computer programs (including software on diskettes and within memory chips) and documentation are copyrighted by, and shall remain the property of, Gasboy. Such computer programs and documents may also contain trade secret information. The duplication, disclosure, modification, or unauthorized use of computer programs or documentation is strictly prohibited, unless otherwise licensed by Gasboy.

## Federal Communications Commission (FCC) Warning

This equipment has been tested and found to comply with the limits for a Class A digital device pursuant to Part 15 of the FCC Rules. These limits are designed to provide reasonable protection against harmful interference when the equipment is operated in a commercial environment. This equipment generates, uses, and can radiate radio frequency energy, and if not installed and used in accordance with the instruction manual, may cause harmful interference to radio communications. Operation of this equipment in a residential area is likely to cause harmful interference in which case the user will be required to correct the interference at his own expense. Changes or modifications not expressly approved by the manufacturer could void the user's authority to operate this equipment.

## Approvals

**Gasboy, Greensboro, is an ISO 9001:2000 registered facility.**

### Underwriters Laboratories (UL):

| UL File# | Products listed with UL  |
|----------|--|
| MH4314   | All dispensers and self-contained pumping units  |
| MH6418   | Power operated Transfer Pump Models 25, 25C, 26, 27, 28, 72, 72S, 72SP, 72X, 73 and 1820   |
| MH7404   | Hand operated Transfer Pump Models 1230 Series, 1243 Series, 1520 and 1720 Series  |
| MH10581  | Key control unit, Model GKE-B Series<br>Card reader terminals, Models 1000, 1000P<br>Site controller, Model 2000S CFN Series<br>Data entry terminals, Model TPK-900 Series<br>Fuel Point Reader System |

### New York City Fire Department (NYFD):

| NYFD C of A # | Product   |
|---------------|---|
| 4823          | 9100A, 9140A, 9152A, 9153A, 9800A, 9840A, 9850A, 9852A, 9853A, 9140             |
| 4997          | 9822A, 9823A  |
| 5046          | 9100Q, 9140Q, 9152Q, 9153Q, 9800Q, 9840Q, 9852Q, 9853Q                          |
| 5087          | 8753K, 8853K, 9153K, 9853K (restricted to diesel and non-retail gasoline sales) |
| 5091          | 8752K, 9152K  |
| 5129          | 9122K, 9123K, 9822K, 9823K  |

### California Air Resources Board (CARB):

| Executive Order # | Product                |
|-------------------|------------------------|
| G-70-52-AM        | Balance Vapor Recovery |
| G-70-150-AE       | VaporVac               |

## National Conference of Weights and Measures (NCWM) - Certificate of Compliance (CoC):

Gasboy pumps and dispensers are evaluated by NCWM under the National Type Evaluation Program (NTEP). NCWM has issued the following CoC:

| CoC#   | Product   | Model #                                      | CoC#   | Product    | Model #                           | CoC#   | Product | Model #                           |
|--------|-----------|--|--------|------------|-----------------------------------|--------|---------|-----------------------------------|
| 95-179 | Dispenser | 9100 Retail Series, 8700 Series, 9700 Series | 91-019 | Dispenser  | 9100 Commercial Series            | 05-002 | Atlas   | 8700K, 8800K, 9100K, 9200K, 9800K |
| 95-136 | Dispenser | 9800 Series                                  | 91-057 | Controller | 1000 Series FMS, 2000S-CFN Series |        |         |                                   |

## Patents

Gasboy products are manufactured or sold under one or more of the following US patents:

### Dispensers

5,257,720

### Point of Sale/Back Office Equipment

D335,673

Additional US and foreign patents pending.

## Trademarks

### Non-registered trademarks

Atlas™  
Console™  
Infinity™

### Registered trademarks

ASTRA®  
Fuel Point®  
Gasboy®  
Keytrol®  
Slimline®

Additional US and foreign trademarks pending.

Other brand or product names shown may be trademarks or registered trademarks of their respective holders.

---

# Table of Contents

---

|   |    |
|---|----|
| 1 – Introduction  | 1  |
| Purpose   | 1  |
| General Description                                     | 1  |
| Model 9120K   | 1  |
| Model 9820K   | 2  |
| Abbreviations and Acronyms                              | 3  |
| 2 – Important Safety Information                        | 5  |
| 3 – Preventive Maintenance                              | 9  |
| General   | 9  |
| Hints for Better Pump Performance                       | 9  |
| Demand Competent Service                                | 9  |
| Use Gasboy Authorized Parts                             | 9  |
| Operate with Reasonable Care                            | 10 |
| Preventive Maintenance                                  | 10 |
| Keep Water Out  | 10 |
| Clean the Dial Face                                     | 10 |
| Clean the Strainer                                      | 10 |
| Change the Filter                                       | 11 |
| Power Reset External Adjustment                         | 11 |
| Adjust the Belts  | 12 |
| Preserve the Finish of Your Pumps                       | 12 |
| 4 – Parts   | 13 |
| Base and Motor Shaft                                    | 13 |
| Pump Assembly   | 15 |
| Meter Shelf, J-Box, and 9123 Register, Reset and Pulser | 17 |
| Reset/Register Module                                   | 19 |
| Pulser Module   | 20 |
| Junction Box Assembly                                   | 22 |
| Meter Assembly  | 24 |
| 9823 Pulser, Totalizer and Gear Train                   | 25 |
| Panels, Remote Register, Mounting Kits                  | 27 |
| 9123K   | 27 |
| 9823K   | 29 |
| Remote Register - Front View                            | 30 |
| Remote Register - Side View                             | 31 |
| Remote Register Chassis Assembly - Top View             | 32 |
| Remote Register Chassis Assembly - Front View           | 33 |
| Remote Register Mounting Option                         | 34 |
| Series Kits and Accessories                             | 35 |

---

*This page is intentionally left blank.*

# 1 – Introduction

---

## Purpose

This manual is provided to assist the Gasboy Authorized Service Contractor (ASC) in servicing the following units used with Aboveground Storage Tanks (ASTs):

- 9120K compact mechanical commercial pump
- 9820K electronic commercial pump

This manual also provides the parts list for the 9X20K units.

*Note: Whenever information in this document applies to all the units listed above, the 9X20K model reference is used.*

## General Description

### Model 9120K

The Gasboy Series 9120K pump units are UL®-listed.

*Note: NFPA regulations do not allow tank-mounted pumps to be used for the resale of fuel.*

Model 9120K offers four-wheel mechanical-interlock registers. Mechanical pump registers show the total volume for a delivery up to 999.9 gallons.

Standard features and specifications of the 9120K Series pumps are as follows:

- Discharge elbows
- A 12-foot length of hose
- A working voltage of 115/230VAC, 50/60 Hz
- Mechanical Volume Totalizer
- A switch detect and optional pulser outputs which allow monitoring of the register's operation when it is connected to an automated fuel management system.
- Four-piston, positive-displacement meter
- Belt-driven, positive-displacement rotary-vane pump with an 80 mesh (300 micron) strainer and integral air-separation
- Cabinet height of 25.4 inches. The other dimensions may be found on the base layout.
- The standard cabinet finish has the top, sides, and back painted black while the front panel is painted white.
- Filters

The available options and accessories for the Gasboy Series 9120K pumps are as follows:

- Interchangeable Automatic Nozzles
- Pulsers
- Special Lengths of Hose
- Vapor Recovery System
- 380 VAC 3-Phase Motor

## Model 9820K

The Gasboy Series 9820K Aboveground Storage Tank Remote Access (ASTRA) pump units are UL-listed.

*Note: NFPA regulations do not allow tank-mounted pumps to be used for the resale of fuel.*

The 9820K Series consists of two metal cabinet assemblies.

- One assembly is mounted on top of the tank and contains the pumping unit, meter, electronic pulser, and all hydraulics. The hose and nozzle are connected to this assembly.
- The second assembly is mounted at a height to permit easy access by a user. It contains the electronic register, controls, display and nozzle boot.

The Standard features and specifications of the 9820K Series pumps are as follows:

- One-inch high, 6-digit, backlighted Liquid Crystal Display (LCD)
- 1000:1 dual-phase, error-checking pulser (gallons); 250:1 dual-phase, error-checking pulser (liters)
- AC authorization line for control of the unit
- Reset complete (Switch Detect) output that allows monitoring of the unit's operation when it is connected to an automated fueling system
- Resettable electronic totalizer
- Discharge elbow
- Both models use a quiet and efficient pump which features an air eliminator, built into the pump casting. The pump meter is a three piston, positive displacement meter which is tested and calibrated for accuracy at any speed or pressure up to the maximum working pressure of 50 psi.
- The standard pumping cabinet finish is white. The electronic register cabinet is black with a blue graphics panel.
- Dual Stage Solenoid Valve
- Filter

Available options and accessories for the Gasboy 9820K Series pumps are as follows:

- Pulser output drive line (open collector), capable of driving 1, 10, 100, 250 and 500 pulses per unit (gallons) or 1, 10, & 100 pulses per unit (liters)
- RS-485 communication for direct connect to Gasboy CFN or TopKAT™ equipment
- Battery backup for display of last transaction and capture of stored pulse count in the event of a power failure.
- Mechanical totalizer
- A working voltage of 115 VAC (115/230 for motor) 60 Hz for domestic use, 230 VAC 50 Hz/60 Hz for international use.
- Other options include listed automatic nozzles, special lengths of listed hose assembly, listed dual swivels, UL-recognized filters, Vapor Recovery, and Vapor Recovery Ready.

## Abbreviations and Acronyms

| Term       | Description                                    |
|------------|--|
| AC (or ac) | Alternating Current                            |
| ASC        | Authorized Service Contractor                  |
| AST        | Aboveground Storage Tank                       |
| ASTRA      | Aboveground Storage Tank Random Access         |
| CFR        | Code of Federal Regulations                    |
| CPR        | Cardiopulmonary Resuscitation                  |
| CPU        | Central Processing Unit                        |
| DC (or dc) | Direct Current                                 |
| LCD        | Liquid Crystal Display                         |
| NEC        | National Electrical Code                       |
| NFPA       | National Fire Protection Association           |
| OSHA       | Occupational Safety and Health Association     |
| PCB        | Printed Circuit Boards (preferred term: board) |
| STP        | Submerged Turbine Pump                         |
| UL         | Underwriters Laboratory                        |

*This page is intentionally left blank.*

## 2 – Important Safety Information

This section introduces the hazards and safety precautions associated with installing, inspecting, maintaining or servicing this product. Before performing any task on this product, read this safety information and the applicable sections in this manual, where additional hazards and safety precautions for your task will be found. Fire, explosion, electrical shock or pressure release could occur and cause death or serious injury, if these safe service procedures are not followed.

### Preliminary Precautions

You are working in a potentially dangerous environment of flammable fuels, vapors, and high voltage or pressures. Only trained or authorized individuals knowledgeable in the related procedures should install, inspect, maintain or service this equipment.

### Emergency Total Electrical Shut-Off

The first and most important information you must know is how to stop all fuel flow to the pump/dispenser and island. Locate the switch or circuit breakers that shut off all power to all fueling equipment, dispensing devices, and Submerged Turbine Pumps (STPs).

#### WARNING



The EMERGENCY STOP, ALL STOP, and PUMP STOP buttons at the cashier's station WILL NOT shut off electrical power to the pump/dispenser. This means that even if you activate these stops, fuel may continue to flow uncontrolled.



You must use the TOTAL ELECTRICAL SHUT-OFF in the case of an emergency and not the console's ALL STOP and PUMP STOP or similar keys.

### Total Electrical Shut-Off Before Access

Any procedure that requires access to electrical components or the electronics of the dispenser requires total electrical shut off of that unit. Understand the function and location of this switch or circuit breaker before inspecting, installing, maintaining, or servicing Gasboy equipment.

### Evacuating, Barricading and Shutting Off

Any procedure that requires access to the pump/dispenser or STPs requires the following actions:



- An evacuation of all unauthorized persons and vehicles from the work area
- Use of safety tape, cones or barricades at the affected unit (s)
- A total electrical shut-off of the affected unit (s)

### Read the Manual

Read, understand and follow this manual and any other labels or related materials supplied with this equipment. If you do not understand a procedure, call a Gasboy Authorized Service Contractor or call the Gasboy Service Center at 1-800-444-5529. It is imperative to your safety and the safety of others to understand the procedures before beginning work.

### Follow the Regulations

Applicable information is available in National Fire Protection Association (NFPA) 30A; *Code for Motor Fuel Dispensing Facilities and Repair Garages*, NFPA 70; *National Electrical Code (NEC)*, Occupational Safety and Hazard Association (OSHA) regulations and federal, state, and local codes. All these regulations must be followed. Failure to install, inspect, maintain or service this equipment in accordance with these codes, regulations and standards may lead to legal citations with penalties or affect the safe use and operation of the equipment.

### Replacement Parts

Use only genuine Gasboy replacement parts and retrofit kits on your pump/dispenser. Using parts other than genuine Gasboy replacement parts could create a safety hazard and violate local regulations.

## Safety Symbols and Warning Words

This section provides important information about warning symbols and boxes.

### Alert Symbol



This safety alert symbol is used in this manual and on warning labels to alert you to a precaution which must be followed to prevent potential personal safety hazards. Obey safety directives that follow this symbol to avoid possible injury or death.

### Signal Words

These signal words used in this manual and on warning labels tell you the seriousness of particular safety hazards. The precautions below must be followed to prevent death, injury or damage to the equipment:



**DANGER:** Alerts you to a hazard or unsafe practice which will result in death or serious injury.



**WARNING:** Alerts you to a hazard or unsafe practice that could result in death or serious injury.



**CAUTION** with Alert symbol: Designates a hazard or unsafe practice which may result in minor injury.

**CAUTION** without Alert symbol: Designates a hazard or unsafe practice which may result in property or equipment damage

## Working With Fuels and Electrical Energy

### Prevent Explosions and Fires

Fuels and their vapors will explode or burn, if ignited. Spilled or leaking fuels cause vapors. Even filling customer tanks will cause potentially dangerous vapors in the vicinity of the dispenser or island.

## No Open Fire



Open flames from matches, lighters, welding torches or other sources can ignite fuels and their vapors.

## No Sparks - No Smoking



Sparks from starting vehicles, starting or using power tools, burning cigarettes, cigars or pipes can also ignite fuels and their vapors. Static electricity, including an electrostatic charge on your body, can cause a spark sufficient to ignite fuel vapors. Every time you get out of a vehicle, touch the metal of your vehicle, to discharge any electrostatic charge before you approach the dispenser island.

## Working Alone

It is highly recommended that someone who is capable of rendering first aid be present during servicing. Familiarize yourself with Cardiopulmonary Resuscitation (CPR) methods, if you work with or around high voltages. This information is available from the American Red Cross. Always advise the station personnel about where you will be working, and caution them not to activate power while you are working on the equipment. Use the OSHA Lockout/ Tagout procedures. If you are not familiar with this requirement, refer to this information in the service manual and OSHA documentation.

## Working With Electricity Safely

Ensure that you use safe and established practices in working with electrical devices. Poorly wired devices may cause a fire, explosion or electrical shock. Ensure that grounding connections are properly made. Take care that sealing devices and compounds are in place. Ensure that you do not pinch wires when replacing covers. Follow OSHA Lockout/ Tagout requirements. Station employees and service contractors need to understand and comply with this program completely to ensure safety while the equipment is down.

## Hazardous Materials

Some materials present inside electronic enclosures may present a health hazard if not handled correctly. Ensure that you clean hands after handling equipment. Do not place any equipment in the mouth.

### WARNING

The pump/dispenser contains a chemical known to the State of California to cause cancer.

### WARNING

The pump/dispenser contains a chemical known to the State of California to cause birth defects or other reproductive harm.

## In an Emergency

### Inform Emergency Personnel

Compile the following information and inform emergency personnel:

- Location of accident (for example, address, front/back of building, and so on)
- Nature of accident (for example, possible heart attack, run over by car, burns, and so on)
- Age of victim (for example, baby, teenager, middle-age, elderly)
- Whether or not victim has received first aid (for example, stopped bleeding by pressure, and so on)
- Whether or not a victim has vomited (for example, if swallowed or inhaled something, and so on)

### WARNING



Gasoline ingested may cause unconsciousness and burns to internal organs.

Do not induce vomiting.

Keep airway open.

Oxygen may be needed at scene.

Seek medical advice immediately.

### WARNING



Gasoline inhaled may cause unconsciousness and burns to lips, mouth and lungs.

Keep airway open.

Seek medical advice immediately.

### WARNING



Gasoline spilled in eyes may cause burns to eye tissue.

Irrigate eyes with water for approximately 15 minutes.

Seek medical advice immediately.

### WARNING



Gasoline spilled on skin may cause burns.

Wash area thoroughly with clear water.




Seek medical advice immediately.

**IMPORTANT:** Oxygen may be needed at scene if gasoline has been ingested or inhaled. Seek medical advice immediately.

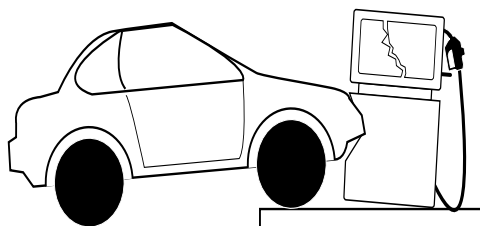
## Lockout/Tagout

Lockout/Tagout covers servicing and maintenance of machines and equipment in which the unexpected energization or start-up of the machine(s) or equipment or release of stored energy could cause injury to employees or personnel. Lockout/Tagout applies to all mechanical, hydraulic, chemical or other energy, but does not cover electrical hazards. Subpart S of 29 CFR Part 1910 - Electrical Hazards, 29 CFR Part 1910.333 contains specific Lockout/ Tagout provision for electrical hazards.

## Hazards and Actions

|  <b>WARNING</b> |  |
|--|--|
|                 | Spilled fuels, accidents involving pumps/dispensers, or uncontrolled fuel flow create a serious hazard.    |
|                 | Fire or explosion may result, causing serious injury or death.<br>Follow established emergency procedures. |

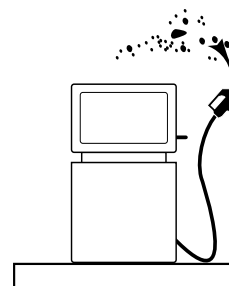
The following actions are recommended regarding these hazards:



Collision of a Vehicle with Unit



Fire at Island



Fuel Spill

- Do not go near a fuel spill or allow anyone else in the area.
- Use station EMERGENCY CUTOFF immediately. Turn off all system circuit breakers to the island(s).
- Do not use console E-STOP, ALL STOP and PUMP STOP to shut off power. These keys do not remove AC power and do not always stop product flow.
- Take precautions to avoid igniting fuel. Do not allow starting of vehicles in the area. Do not allow open flames, smoking or power tools in the area.
- Do not expose yourself to hazardous conditions such as fire, spilled fuel or exposed wiring.
- Call emergency numbers.

---

*This page is intentionally left blank.*

## 3 – Preventive Maintenance

---

### General

Gasboy pumps are designed and constructed to give many years of uninterrupted service. In fact, operators report years of trouble-free operation with absolutely no service expense. Yet, certain parts of a pump are bound to wear, and Gasboy therefore recommends a periodic inspection, at least twice a year, for such things as fuel leaks, belt tension and condition, lubrication and strainer cleanliness. If such a procedure is followed, any small adjustments that are necessary can be made before expensive, annoying breakdowns occur. The result of this sound approach is continuous, profitable service from all of your Gasboy equipment.



#### **WARNING**



To reduce the risk of electrical shock when servicing a pump, turn off all power to the pump.

### Hints for Better Pump Performance

#### **Demand Competent Service**

Gasboy suggests all service be done by certified Gasboy Authorized Service Contractors (ASCs) trained and familiar with the service of Gasboy products. Warranty service must be done by Gasboy ASC. Gasboy has a Distributor Network which services fuel dispensing and management systems in every section of the country.

#### **Use Gasboy Authorized Parts**

Should excessive wear, rust, or corrosion of parts cause inefficient operation, it is always best to replace them immediately; but if you want the best results and continuity of the Underwriters' Label on your pump, ensure that new authorized service parts supplied by Gasboy are used. Every part of a pump is carefully designed for a particular purpose. If it is replaced by an incorrect or substandard substitute, pump operation can be unsatisfactory and warranty will be voided. Always use new gaskets or seals when servicing or rebuilding Gasboy equipment; do not re-use the old ones.

## Operate with Reasonable Care

Like any machine, the pump that is operated with reasonable care will last longer and give better service. Abuse should be avoided (such as dropping the nozzle on the ground, operating the unit with a dirty strainer, dragging the hose across the concrete island or driveway, running the pump with the nozzle closed for more than two minutes and so on). Parts that fail from abuse will not be covered by warranty. The time and care given to your pumps will be returned to you in the form of dependable service.

## Preventive Maintenance

Refer to the “[Important Safety Information](#)” on [page 5](#) and read and understand all the information contained there. It is recommended that all service to this unit be done by Certified Gasboy ASCs familiar with the operation of this equipment and safety requirements for servicing equipment in potentially hazardous condition or location.

### Keep Water Out

Water tends to collect in storage tanks. This is due to moisture-laden air being drawn into the storage tank and condensing, or to defective fill openings that are not properly protected with watertight covers. Storage tanks should be checked after every fill-up for water and removed with a sump pump, to forestall serious damage to equipment. Water, sediment, and other foreign matter that accumulates in the tank can be drawn up into the pump and cause failures.

### Clean the Dial Face

Clean the dial face with a soft, clean, damp cloth as often as necessary. Do not use abrasive cleaners or those containing ammonia.

### Clean the Strainer

Clean the strainer immediately after the pump has been installed and tested, and again after a few hundred gallons have been delivered. Thereafter, once every six months, or whenever a filter is changed. The symptoms of a dirty or clogged strainer in a pump are slow delivery, noisy operation, and pulsation. To clean the strainer, turn off AC power to the pump. Locate the Suction Strainer Cap on the plumbing unit and unscrew it to access and remove the strainer. Use compressed air to blow the dirt out of the strainer. Clogged strainers can commonly be cleaned using alcohol. Refer to item 3 in the parts list under “[Meter Assembly](#)” on [page 24](#).



#### CAUTION



Always wear protective safety goggles or glasses when using compressed air.

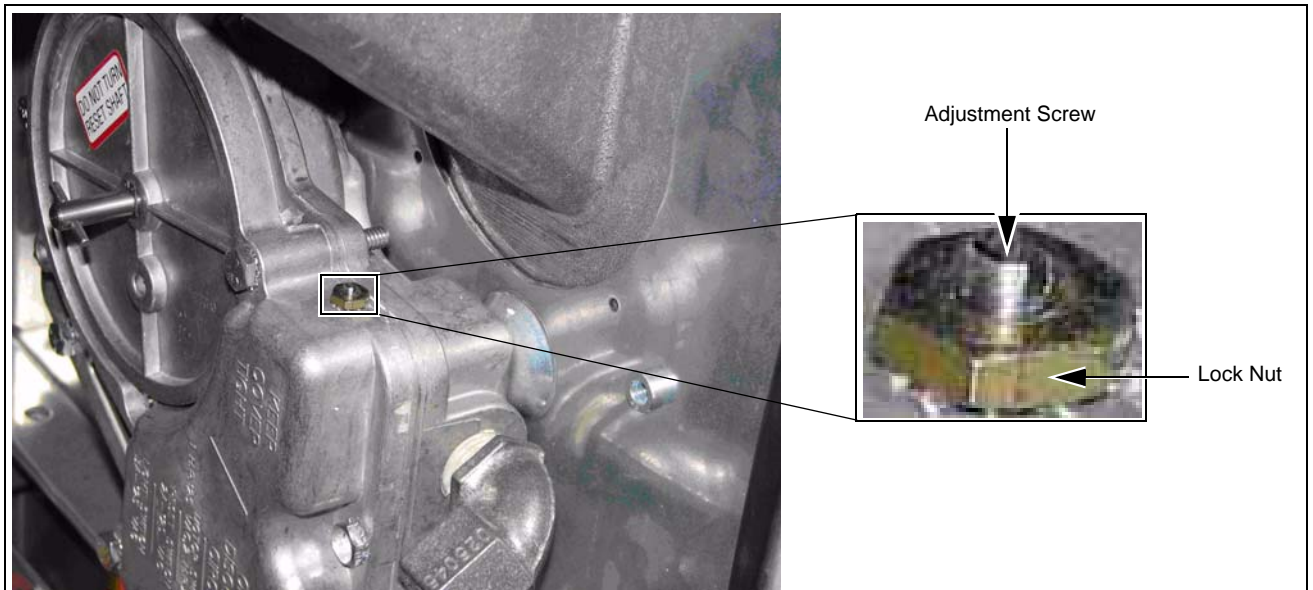
## Change the Filter

If the unit is equipped with a filter, check and change it at regular intervals. A dirty filter in a pump will cause a slower delivery rate. Refer to the accessories section of your parts manual to ensure that you replace the filter with one designed for your model. Always use a drip pan directly below the filter when removing the cartridge to prevent contamination of the soil and to aid in fluid recovery. Refer to item 2 in the parts list under “[Meter Assembly](#)” on [page 24](#).

## Power Reset External Adjustment

If the pump or remote dispenser fails to reset or shut off properly, the reset motor may need to be adjusted. To adjust, proceed as follows:

- 1 Loosen the lock nut on the adjusting screw and back screw out until it stops.
- 2 Move the reset lever to the ON position.
- 3 Turn adjustment screw in until reset motor starts.
- 4 Advance adjustment screw an additional 1/2 to 3/4 turn. Hold screw in this position and tighten the lock nut.
- 5 Move the reset lever to the OFF position, and then back to the ON position to verify if the reset motor operates properly. The reset coupling should make one revolution and stop.



## Adjust the Belts

With proper care, belts will give exceptionally good service. A loose belt not only cuts down pumping speed, due to slipping, but also results in excessive wear.

On the 9X20K units, the belt can be tightened by removing a link from the belt.

## Preserve the Finish of Your Pumps

Nearly all gasoline pumps are installed outdoors where their surfaces are subjected to the action of the weather. As a result, it is necessary to give the finish a reasonable amount of care if an attractive appearance is to be maintained.

The finish on Gasboy pump housings is a high-heat baked synthetic enamel, similar to that used on automobiles. The life of this finish can be lengthened several years if, at regular intervals, the painted surfaces are thoroughly cleaned with a non abrasive detergent and then protected with a coat of paste wax.

- Do not use abrasive cleaners.
- Do not use high pressure spraying equipment.
- Fuel stains can be removed using "Greased Lightning".

In order to retain the unmarked finish on stainless steel, occasional cleaning is required. In corrosive atmospheres, such as coastal areas, a more frequent cleaning schedule is necessary.

- Under ordinary conditions, washing with detergent or soap and water, followed by a clean water rinse, is sufficient.

*Note: If hard water is used, the surface should be wiped dry with a soft clean cloth to prevent the formation of water spots.*

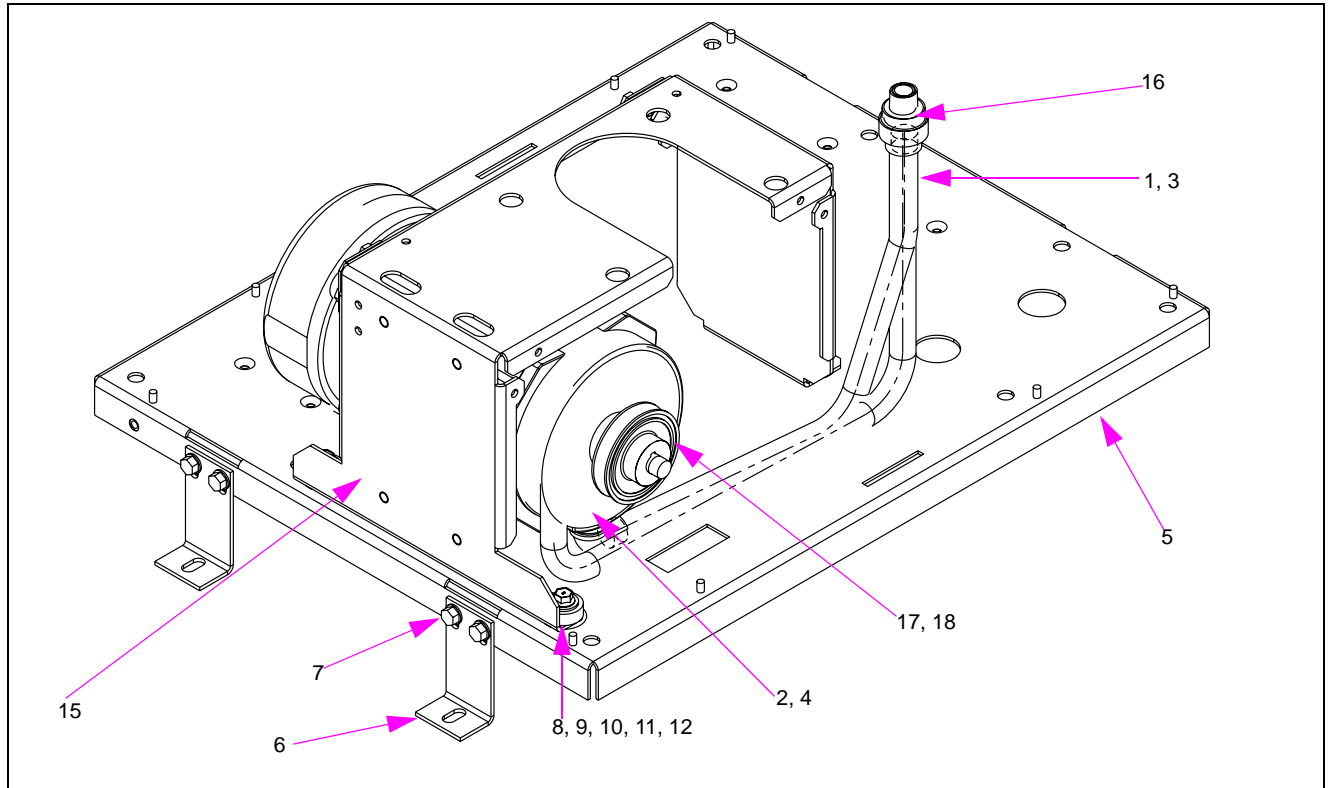
- Marks or spots, such as grease, oily fingerprints and smudges which resist soap and detergents, will have to be removed with a stronger cleaner capable of removing all oil/grease completely (DO NOT use ordinary steel wool as iron particles may adhere to the surface and cause corrosion.)

*Note: Care should be taken in choosing a cleaner because any cleaning compounds or powders which contain abrasives can scratch a mill-rolled finish. Care must be exercised in their use to run in the direction of the polishing lines in the steel, never across them.*

After cleaning, an application of paste wax is recommended to protect the surface and prolong the interval between cleaning.

## 4 – Parts

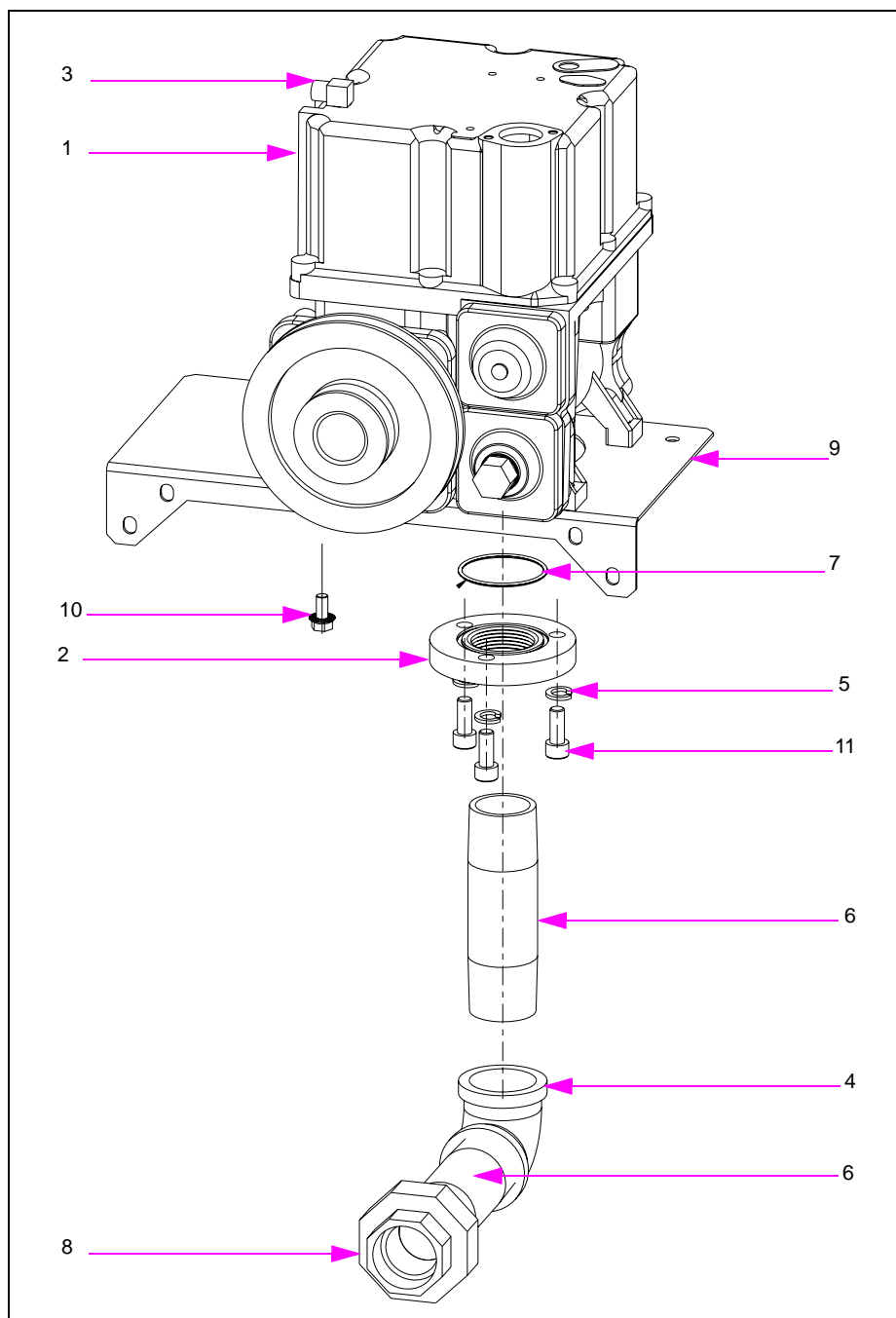
### Base and Motor Shaft



| Item # | Part Description                               | Current Part | Previous Part | Quantity |
|--------|--|--------------|---------------|----------|
| 1      | Conduit, Motor to J-Box                        | M06978B001   | -             | 1        |
| 2      | Motors, Cont. Duty 61 Frame                    | R14213-32    | -             | 1        |
| 3      | Assembly Conduit Motor to J-Box                | M07039B001   | -             | 1        |
| 4      | Electric Motor Frank In                        | M01068B302   | -             | 1        |
| 5      | Assembly, Bottom Panel 9x20k                   | M06582A001   | -             | 1        |
| 6      | Mounting Foot,9820 SS Tum                      | 026401       | -             | 4        |
| 7      | Screw, Metric M8 X 18                          | M00417B009   | -             | 8        |
| 8      | Mount, Universal                               | M04871B001   | -             | 4        |
| 9      | Washer, Flat M20 Stl Znpl                      | M00959B019   | -             | 4        |
| 10     | Screw Metric M8 X 40                           | M00415B017   | -             | 4        |
| 11     | Belt Adjustable                                | M07022B002   | -             | 0.0255   |
| 12     | Flat Washer                                    | M00959B008   | -             | 4        |
| 13     | Bracket, Reinforced Corner Gussett (Not Shown) | M06757B002   | -             | 2        |

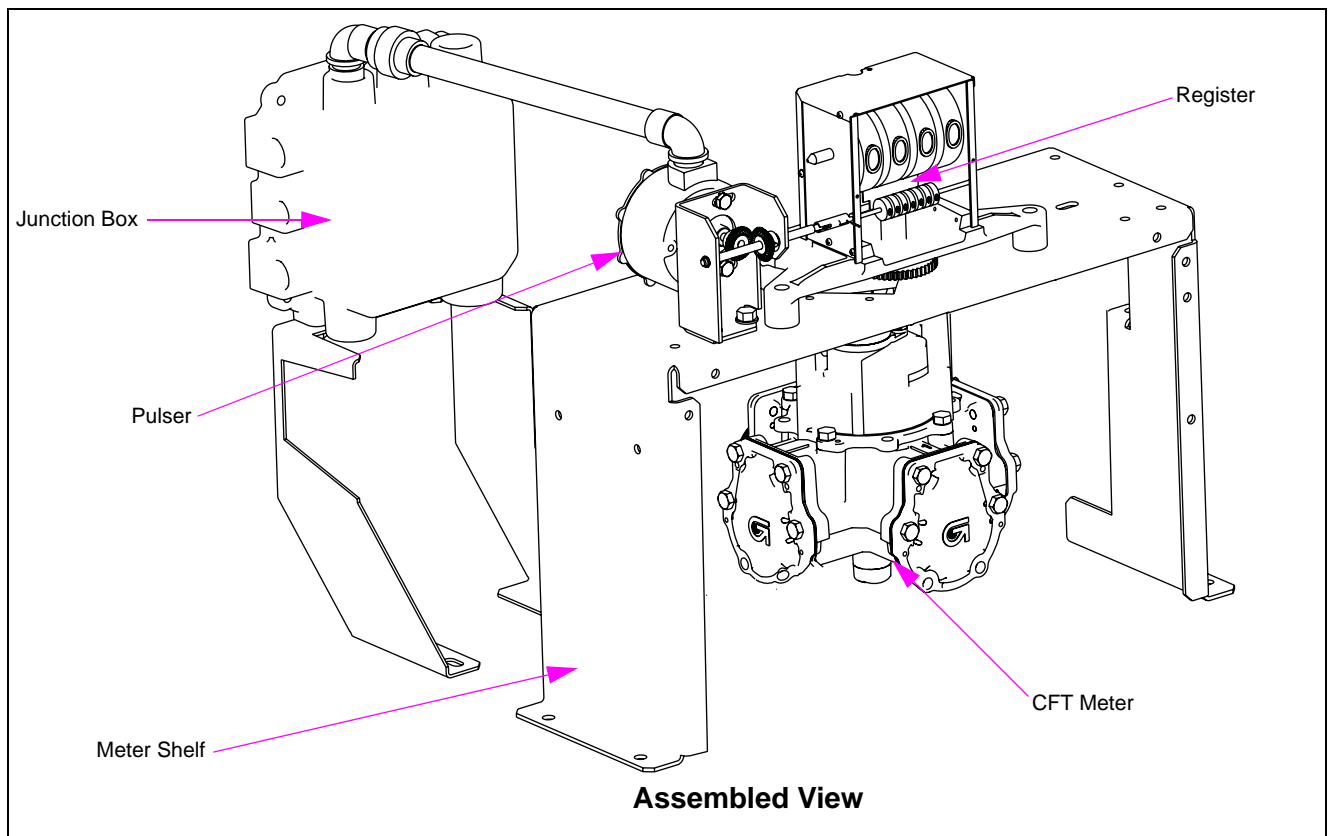
| Item # | Part Description                            | Current Part | Previous Part | Quantity |
|--------|---|--------------|---------------|----------|
| 14     | Nut, Metric, Hex Serrd Flg (M8) (Not Shown) | M00414B003   | -             | 4        |
| 15     | Shelf, Motor Support                        | M06566A001   | -             | 1        |
| 16     | Union, Conduit 1/2 Inch                     | Q10016-04    | -             | 1        |
| 17     | Pulley A Belt 2.50 Pd                       | R18900-27    | -             | 1        |
| 18     | Pulley A Belt 3.00 Pd                       | R18900-32    | -             | 1        |

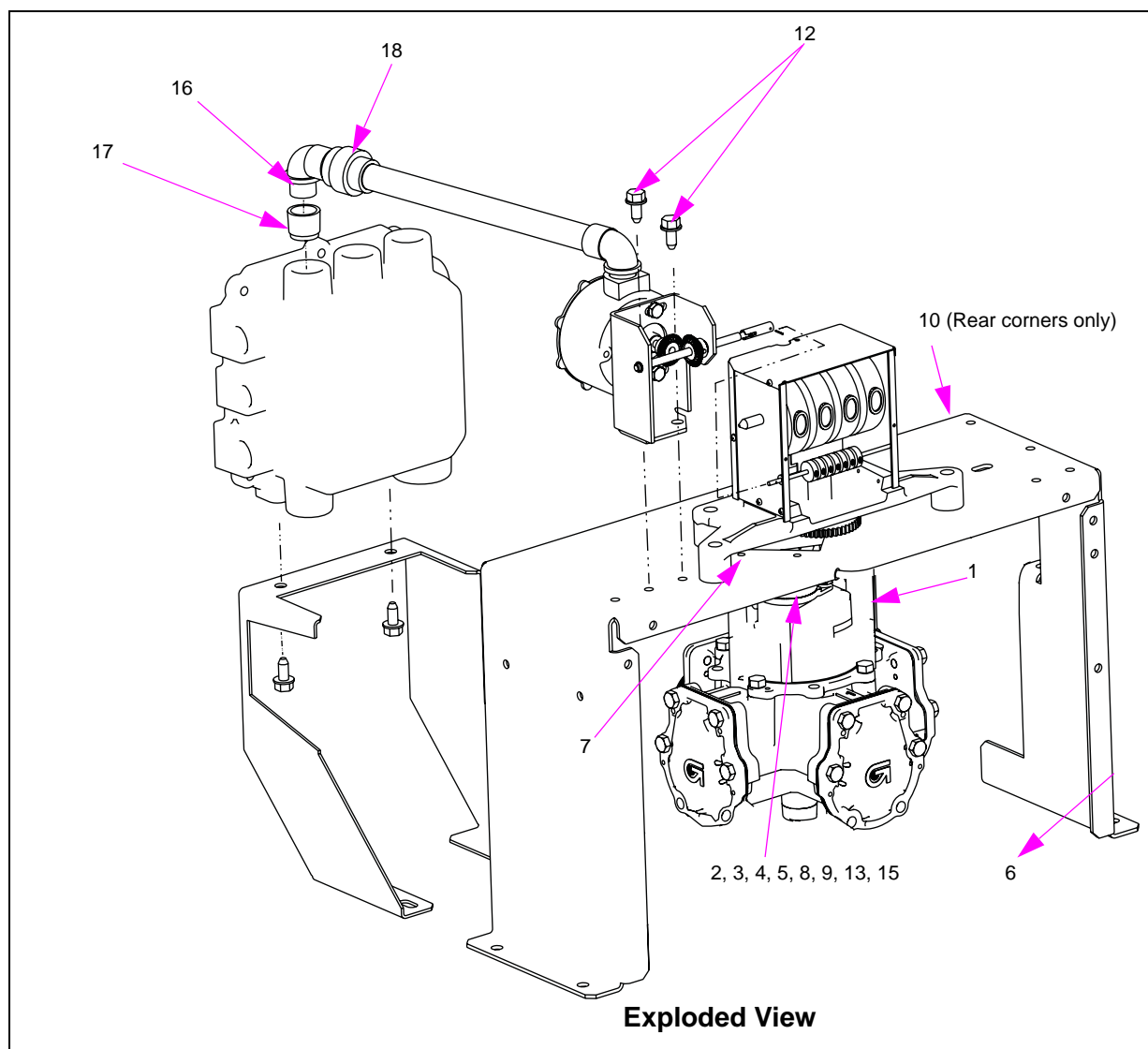
# Pump Assembly



| Item #                 | Part Description                       | Current Part | Previous Part | Quantity |
|------------------------|--|--------------|---------------|----------|
| 1                      | Global Pumping Unit                    | M04920B003   | -             | 1        |
| 2                      | Adaptor - EPZ Inlet                    | 023146       | -             | 1        |
| 3                      | Connection 90 Elbow Compression (Male) | Q12503-02    | -             | 1        |
| 4                      | Elbow 1-1 1/2 90 deg 150 PSI MI        | K46046       | -             | 1        |
| 5                      | Lockwasher Metric M10 Zinc Plate       | M01071B001   | -             | 3        |
| 6                      | Nipple FEe Pipe 1 1/2 x 6.00           | R11493-28    | -             | 2        |
| 7                      | O-Ring 2.237 x 0.103                   | Q10067-31    | -             | 1        |
| 8                      | Pipe Union, Female                     | K12179       | -             | 1        |
| 9                      | Plate, Pump Mounting                   | M06738B001   | -             | 1        |
| 10                     | Screw Metric M8 X 16                   | M00415B009   | -             | 4        |
| 11                     | Socket Head Cap Screw, M10 X 25        | M04973B005   | -             | 3        |
| 12                     | Tube, Vent 9x20K (Not Shown)           | M06650B003   | -             | 1        |
| <b>GPU Repair Kits</b> |  |              |               |          |
| 13                     | Bypass Valve                           | M04920K100   | -             | 1        |
| 14                     | Strainer                               | M04920K101   | -             | 1        |
| 15                     | Master Seal                            | M04920K102   | -             | 1        |
| 16                     | Blades                                 | M04920K103   | -             | 1        |
| 17                     | Control Valves                         | M04920K104   | -             | 1        |
| 18                     | Lip Seal                               | M04920K105   | -             | 1        |
| 19                     | Pumping Element Field Rebuild          | M04920K106   | -             | 1        |
| 20                     | Sump Float - OIML (B005)               | M04920K107   | -             | 1        |
| 21                     | Pumping Element Shop Rebuild           | M04920K108   | -             | 1        |
| 22                     | Inlet Check Valve                      | M04920K109   | -             | 1        |
| 23                     | Overflow Check Valve                   | M04920K110   | -             | 1        |
| 24                     | Sump Float - Non OIML (B001)           | M04920K111   | -             | 1        |

## Meter Shelf, J-Box, and 9123 Register, Reset and Pulser

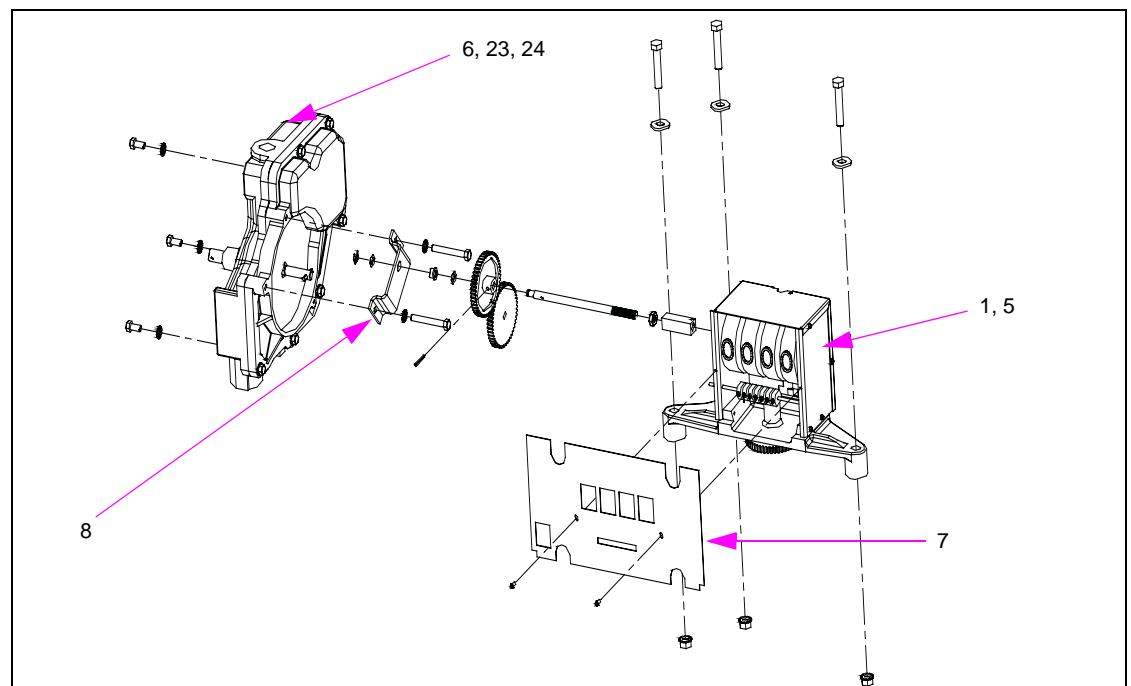




| Item # | Part Description                    | Current Part | Previous Part | Quantity |
|--------|-------------------------------------|--------------|---------------|----------|
| 1      | Screw Hex Serr Flng Hd              | Q10253-02    | -             | 3        |
| 2      | Washr Lk Ext Th 1/4x.025            | K50411-31    | -             | 1        |
| 3      | Stud Drive Gear                     | N23567       | -             | 1        |
| 4      | Ball Swivel                         | K93546-01    | -             | 1        |
| 5      | Pin Cotter 1/16x1/2                 | K02124       | -             | 1        |
| 6      | Mounting Bracket, Meter Shelf       | M06564A001   | -             | 1        |
| 7      | Screw, Metric M8 X 16               | M00415B009   | -             | 4        |
| 8      | Gear Pinion 20 Th                   | K55151-21    | -             | 1        |
| 9      | Assy Drv Gear & Bush 21             | K55152       | -             | 1        |
| 10     | Bracket, Reinforced Corner          | M06757B002   | -             | 2        |
| 11     | Bracket Assy, Retriever (Not shown) | M06768A002   | -             | 1        |
| 12     | Screw, Metric M8 X 18               | M00417B009   | -             | 13       |

| Item # | Part Description                     | Current Part | Previous Part | Quantity |
|--------|--------------------------------------|--------------|---------------|----------|
| 13     | Screw Skt Hd Cap 5/16-18             | Q12081-02    | -             | 1        |
| 14     | Assy Drive Gear + Bushi              | K53743       | -             | 1        |
| 15     | Gear Pinion 12 Th                    | K51008-24    | -             | 1        |
| 16     | Elbow Conduit 1/2 X 90 Male & Female | K42448       | -             | 1        |
| 17     | Bushing, Reducing                    | K49827-22    | -             | 1        |
| 18     | Union Conduit Male & Female 1/2      | Q10016-04    | -             | 1        |

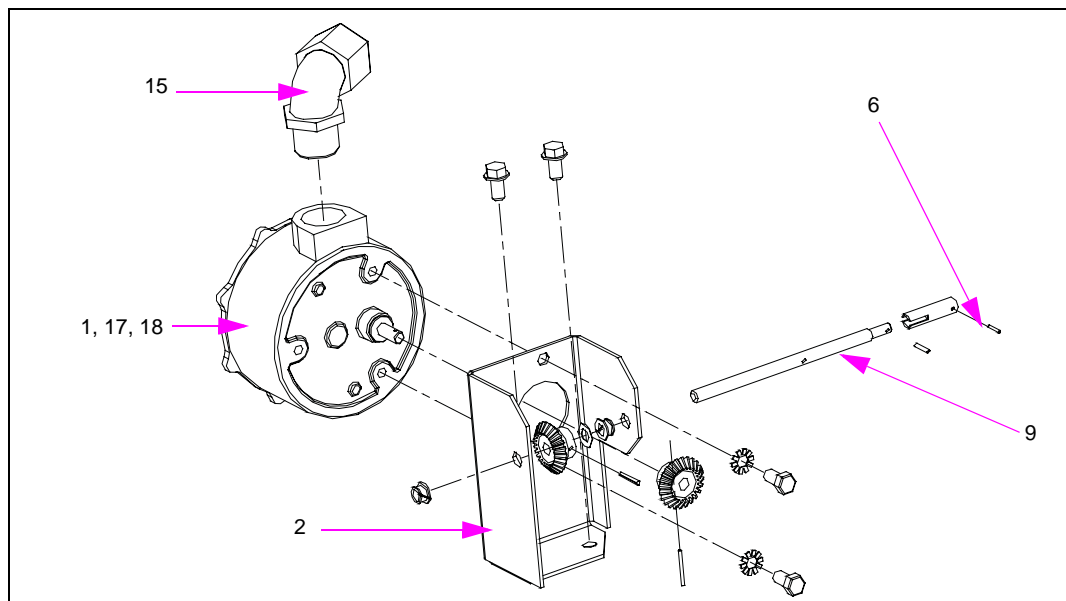
## Reset/Register Module



| Item # | Part Description                       | Current Part | Previous Part | Quantity |
|--------|--|--------------|---------------|----------|
| 1      | Drive Register Assembly 9120K, Gallons | 022834       | -             | 1        |
| 2      | Nut Hex Keps W/ext Lkwshr              | Q12068-06    | -             | 1        |
| 3      | Screw Hex Hd Cap Finished              | K03782       | -             | 1        |
| 4      | Washer 5/16in Sae-n (.38 X             | K65235-33    | -             | 1        |
| 5      | Drive Register Assembly 9120K, Liters  | 022835       | -             | 1        |
| 6      | Reset Assy Elec Unli 115/              | 048568       | -             | 1        |
| 7      | Dial-mask                              | GB91501G001  | -             | 1        |
| 8      | Bracket-gear & Shaft- 912              | 014040       | -             | 1        |
| 9      | Sleeve S/b As 1463-3                   | 056710       | -             | 1        |
| 10     | Nut Hex 5/16-18 Chk                    | K01933       | -             | 1        |
| 11     | Shaft-reset Interlock-912              | 054510       | -             | 1        |
| 12     | Gear-60t(9120K Reset)                  | 028235       | -             | 1        |

| Item # | Part Description                           | Current Part | Previous Part | Quantity |
|--------|--|--------------|---------------|----------|
| 13     | Washer, SS .260 X .500                     | 068037       | -             | 2        |
| 14     | Brng Oilt Flng                             | N17706-43    | -             | 1        |
| 15     | Groovpin 1/8x7/8 IIs#2zn2                  | 013128       | -             | 1        |
| 16     | Washer, lock Ext 1/4 1114                  | 068891       | -             | 3        |
| 17     | Screw Hex Hd Cap Finished                  | K05287       | -             | 3        |
| 18     | Screw Tf Pnh Phl 4-40x                     | Q11769-02    | -             | 2        |
| 19     | Ring Ret 1/4                               | K76238-41    | -             | 1        |
| 20     | Bracket Assy, Side Frame 9120K (Not Shown) | M04295A001   | -             | 1        |
| 21     | Screw, Metric M8 X 18                      | M00417B009   | -             | 2        |
| 22     | Elbow Cndt 1/2x90 M & F                    | K42448       | -             | 1        |
| 23     | Reset/reg Mod 9120K Gal 1                  | 042724       | -             | 1        |
| 24     | Reset Assy Elec Unli 230/                  | 048677       | -             | 1        |

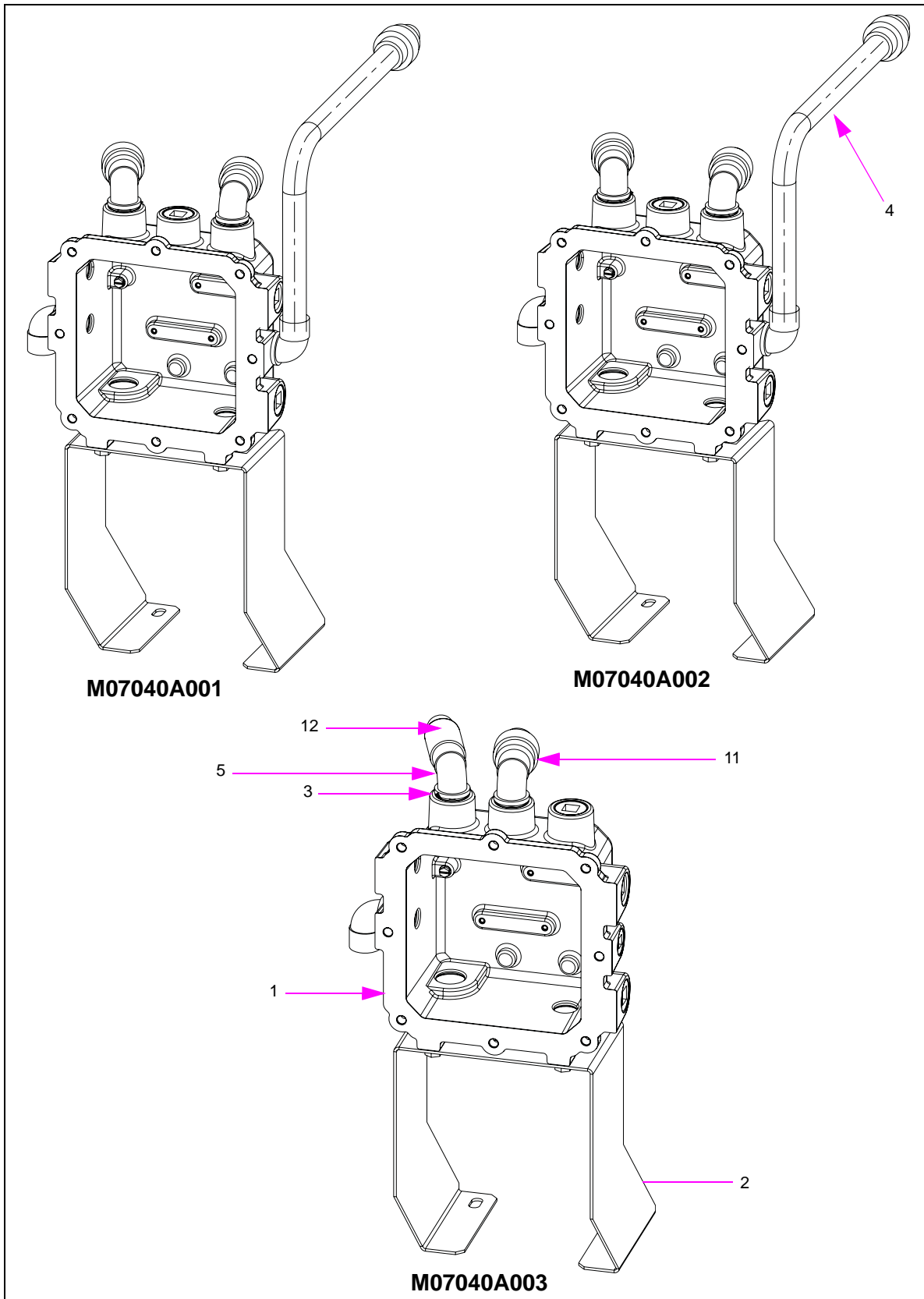
## Pulser Module



| Item # | Part Description          | Current Part | Previous Part | Quantity |
|--------|---------------------------|--------------|---------------|----------|
| 1      | Plsr 10:1 Vr 769780-010   | 021788       | -             | 1        |
| 2      | Bracket, Pulser Shaft     | M06740B001   | -             | 1        |
| 3      | Bearing Nyliner#412ff     | 011954       | -             | 2        |
| 4      | Gear Miter-24 T Mach Tank | 028422       | -             | 1        |
| 5      | Pin Grv Type 1 3/32x5/8   | K48724       | -             | 1        |
| 6      | Spirol Pin .062 X .750    | Q10038-30    | -             | 1        |
| 7      | Screw Hex Hd Cap Finished | K05287       | -             | 2        |
| 8      | Washer, lock Ext 1/4 1114 | 068891       | -             | 2        |
| 9      | Shaft-totalizer-9120K     | 054526       | -             | 1        |
| 10     | Spirol Pin .052 X .375    | Q10038-26    | -             | 1        |

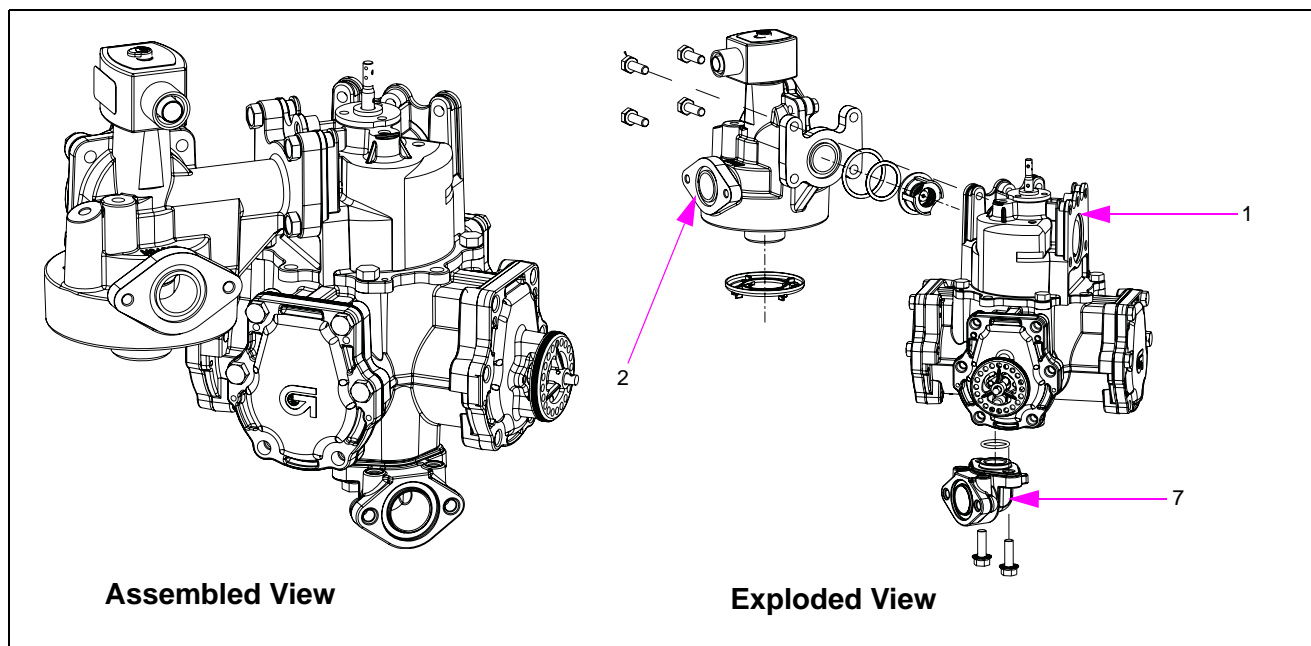
| Item # | Part Description                     | Current Part | Previous Part | Quantity |
|--------|--------------------------------------|--------------|---------------|----------|
| 11     | Washer, SS .260 X .500               | 068037       | -             | 1        |
| 12     | Screw, Metric M8 X 18                | M00417B009   | -             | 2        |
| 13     | Coupling-totalizer 9120K             | 054527       | -             | 1        |
| 14     | Spirol Pin .078 X .437               | Q10038-35    | -             | 1        |
| 15     | Elbow Cndt 1/2x90 M & F              | K42448       | -             | 1        |
| 16     | Nipple Cndt 1/2 X 10-1/2 (Not Shown) | R11976-80    | -             | 1        |
| 17     | Pulser Mod 9120K C+10:1              | 042737       | -             | 0        |
| 18     | Plsr 100:1 Vr 767181-332             | 047648       | -             | 1        |

## Junction Box Assembly



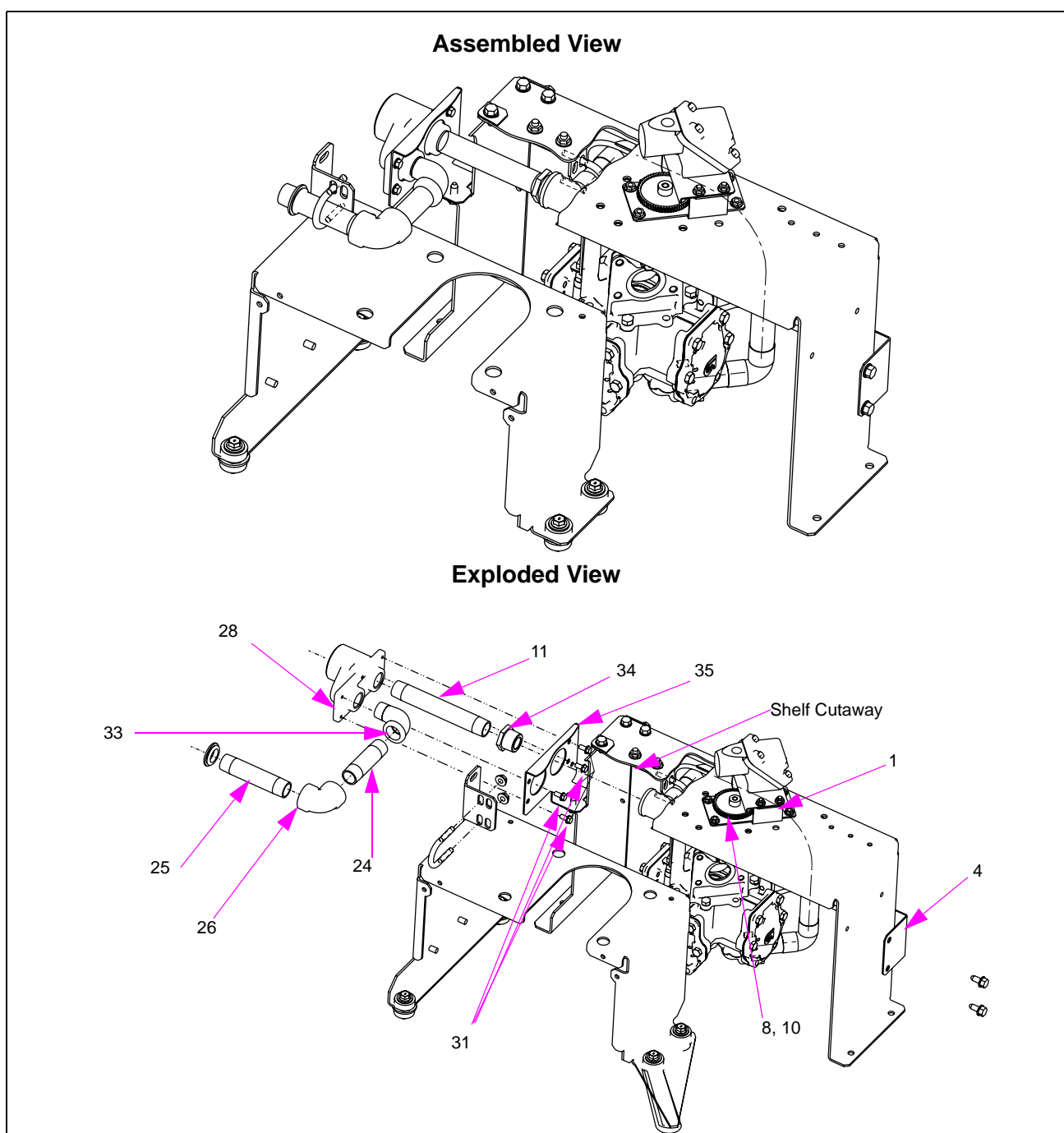
| Item # | Part Description                                  | Current Part | Previous Part | Quantity |
|--------|---|--------------|---------------|----------|
| 1      | Junction Box                                      | M04480B010   | -             | 1        |
| 2      | Bracket, J-Box Mounting                           | M06649B001   | -             | 1        |
| 3      | Bushing, Reducing 3/4 - 1/2                       | K49827-22    | -             | 2        |
| 4      | Conduit, J-Box to Reset                           | M07002A001   | -             | 1        |
| 5      | Elbow, 1/2 X 90 M X F                             | K42448       | -             | 4        |
| 6      | Pipe Plug C-Sunk 1                                | K51440       | -             | 1        |
| 7      | Pipe Plug C-Sunk 1/2                              | K43850       | -             | 1        |
| 8      | Pipe Plug C-Sunk 3/4                              | K57624       | -             | 4        |
| 9      | Screw, Hex, Sltd, Thd Frng, Wshr Hd (10-32 X 1/2) | K85736-05    | -             | 1        |
| 10     | Screw TF, Hex Wshr Hd M X 18                      | M00417B009   | -             | 2        |
| 11     | Union Conduit 1/2 Inch                            | Q10016-04    | -             | 3        |
| 12     | Expansion Union (conduit)                         | N16289-20    | -             | 1        |
| 13     | Cover Junction Box                                | M04536B010   | -             | 1        |

## Meter Assembly



| Item # | Part Description                       | Current Part             | Previous Part | Quantity |
|--------|--|--------------------------|---------------|----------|
| 1      | CFT Meter Assembly                     | T20150-G9<br>T20150-G10  | -             | 1        |
| 2      | 2- Stage Sol Valve and Filter Manifold | M04607B002<br>M04607B001 | -             | 1        |
| 3      | Strainer Insert High Capacity          | R19457                   | -             | 1        |
| 4      | Assy Meter Check Valve                 | N23619-G2                | -             | 1        |
| 5      | O-Ring 1.234 X 0.139                   | Q10068-09                | -             | 1        |
| 6      | O-Ring 1.609X 0.139                    | Q10068-14                | -             | 1        |
| 7      | Fitting, Discharge                     | M04624B040               | -             | 1        |
| 8      | O-Ring 0.862 X 0.103                   | N16891-32                | -             | 1        |
| 9      | Screw Metric M8 X 25                   | M00415B011               | -             | 2        |
| 10     | Bolt, Hx Hd Sems, 5/16-18x1" Lg        | Q10865-36                | -             | 4        |

# 9823 Pulser, Totalizer and Gear Train

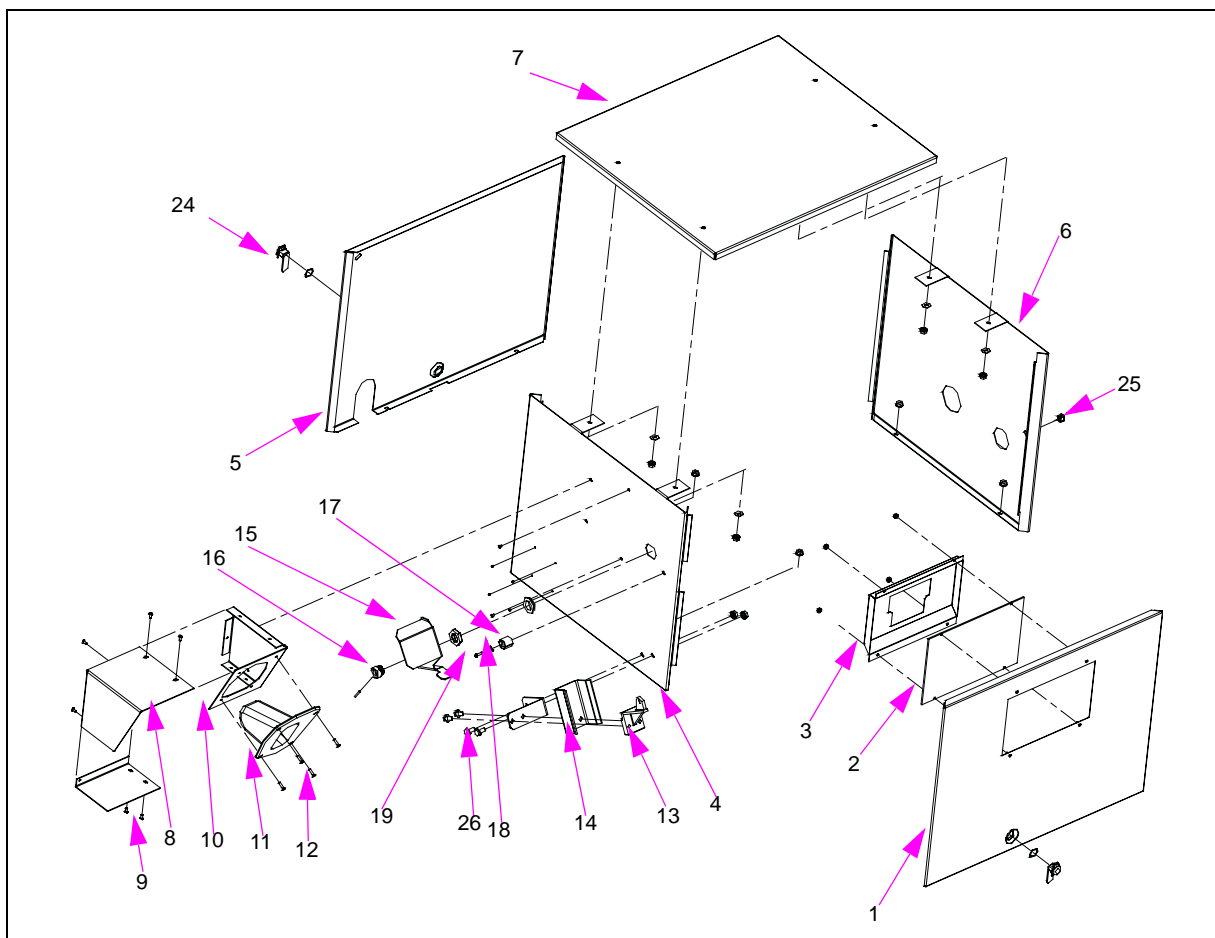


| Item # | Part Description                | Current Part | Previous Part | Quantity |
|--------|---------------------------------|--------------|---------------|----------|
| 1      | Assy, Pulser Mtg Bracket        | M07175A001   | -             | 1        |
| 2      | Nut, Metric Serrated            | M00414B002   | -             | 4        |
| 3      | Kit-Totalizer, 9820 Gal Factory | 025934       | -             | 1        |
| 4      | Assy, Bracket Ast Totlzl        | M06737A001   | -             | 1        |
| 5      | Screw, Metric M8 X 18           | M00417B009   | -             | 2        |

| Item #               | Part Description               | Current Part | Previous Part | Quantity |
|----------------------|--------------------------------|--------------|---------------|----------|
| 6                    | Tie Cable                      | Q10178-02    | -             | 2        |
| 7                    | Kit-Totalizer 9820 Ltr Factory | 025936       | -             | 1        |
| 8                    | Assy, Brkt Gear Train          | M07102A001   | -             | 1        |
| 9                    | Nut, Metric Serrated           | M00414B002   | -             | 4        |
| 10                   | Assy, Brkt Gear Train          | M07102A002   | -             | 1        |
| <b>Vapor (Shown)</b> |                                |              |               |          |
| 11                   | Nippl 3/4 X 6-1/2 Lg           | R11496 70    | -             | 1        |
| 12                   | Assy, Feedline Tube            | M06810A001   | -             | 1        |
| 13                   | Flange Pump Discharge          | M04686B001   | -             | 1        |
| 14                   | Ring O 1-1/8x1-3/8x1/8         | Q10068-07    | -             | 1        |
| 15                   | Screw Skt Hd Cap Metric        | M04973B001   | -             | 2        |
| 16                   | Screw Hex Serr Flng Hd         | Q10253-02    | -             | 4        |
| 17                   | Ring O 1-1/4x1-1/2x1/8         | Q10068-09    | -             | 2        |
| 18                   | Assy, Discharge Tube           | M06809A001   | -             | 1        |
| 19                   | Assy, Bracket U-bolt Mtg       | M06767A001   | -             | 1        |
| 20                   | Brakt U-bolt Mounting          | M06767B002   | -             | 1        |
| 21                   | U-bolt, Metric, M8             | M00703B001   | -             | 2        |
| 22                   | Nut, Metric M8 Serrated        | M00414B003   | -             | 6        |
| 23                   | Screw, Metric M8 X 18          | M00417B009   | -             | 6        |
| 24                   | Nipple 3/4 X 3-1/2             | R11496-75    | -             | 1        |
| 25                   | Nipple 3/4 X 4-3/8 Lg          | R11496-84    | -             | 1        |
| 26                   | Elbow-3/4 X 90 (Paint)         | 024955       | -             | 1        |
| 27                   | Label Gasboy V/r Hose          | M04039B003   | -             | 1        |
| 28                   | Casting Splitter Vp Emco#      | 049980       | -             | 1        |
| 29                   | Elbow Cndt 1/2x90 M & F        | K42448       | -             | 1        |
| 30                   | Condt, J-box To Valve          | M07001B001   | -             | 1        |
| 31                   | Screw Hex Hd Wshr Hd T-t       | K85736-51    | -             | 4        |
| 32                   | Screw, Metric M8 X 16          | M00415B009   | -             | 2        |
| 33                   | Elbow St 3/4 X 90 Mi           | K21703       | -             | 1        |
| 34                   | Bushg Red Hex Hd               | K02297       | -             | 1        |
| 35                   | Bracket, Vapor Casting         | M06741B001   | -             | 1        |
| <b>Non Vapor</b>     |                                |              |               |          |
| 36                   | Nippl 1x10-3/4                 | R11495-24    | -             | 1        |
| 37                   | Condt, J-box To Valve          | M07001B001   | -             | 1        |
| 38                   | Screw, Metric M8 X 16          | M00415B009   | -             | 2        |

# Panels, Remote Register, Mounting Kits

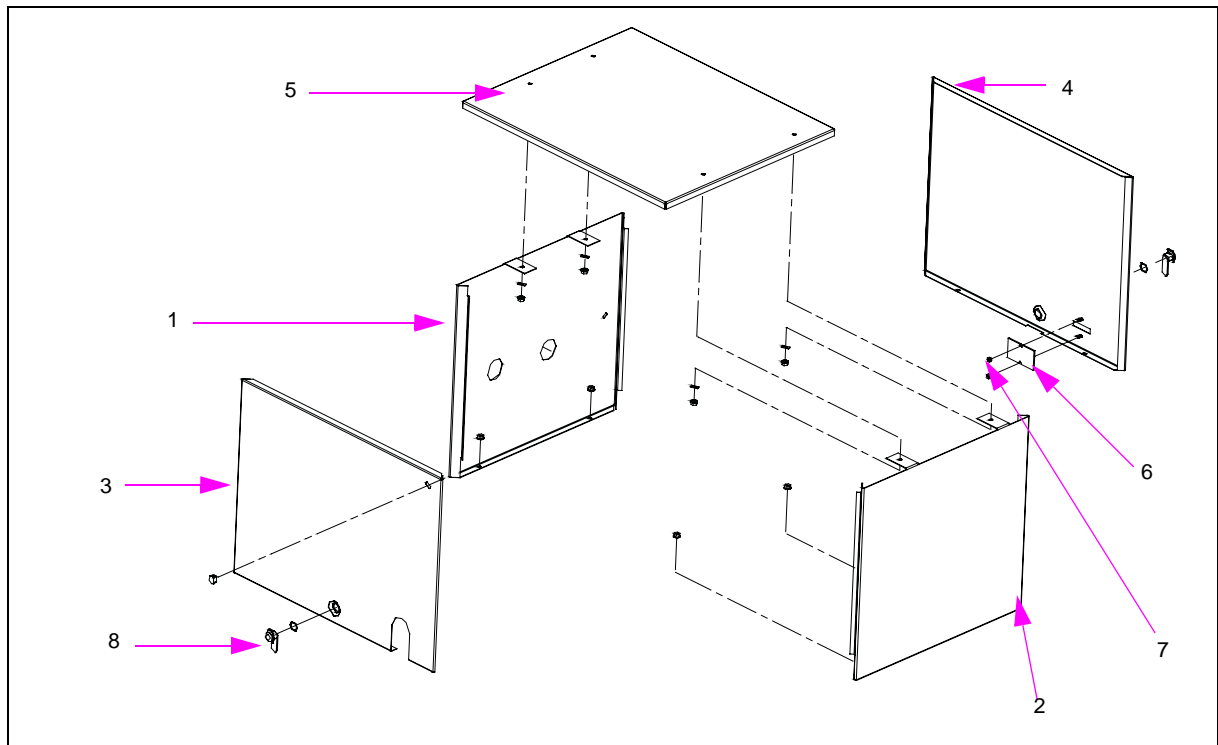
## 9123K



| Item # | Part Description           | Current Part | Previous Part | Quantity |
|--------|----------------------------|--------------|---------------|----------|
| 1      | Assy, Front Panel 9120K    | M06583A002   | -             | 1        |
| 2      | Glass Window 9120K         | 028811       | -             | 1        |
| 3      | Brakt 9120K Totalizer Face | M06739B001   | -             | 1        |
| 4      | Panel Lh Side 9120K        | M06584B002   | -             | 1        |
| 5      | Panel Back 9x20K           | M06578B003   | -             | 1        |
| 6      | Panel Rh Side 9X20K        | M06579B002   | -             | 1        |
| 7      | Assy, Top Panel 9X20K      | M06758A001   | -             | 1        |
| 8      | Cover Nozzle Boot 9120K    | 026420       | -             | 1        |
| 9      | Screw Tc Pnh Phl 10-32 X   | Q11769-76    | -             | 6        |
| 10     | Brkt Nozzle Boot Mtg       | 026403       | -             | 1        |
| 11     | Boot-noz;98a,88b/d (Mach)  | 003338       | -             | 1        |
| 12     | Screw Tpt Phil Fl Hd 8-32  | Q13399-03    | -             | 4        |

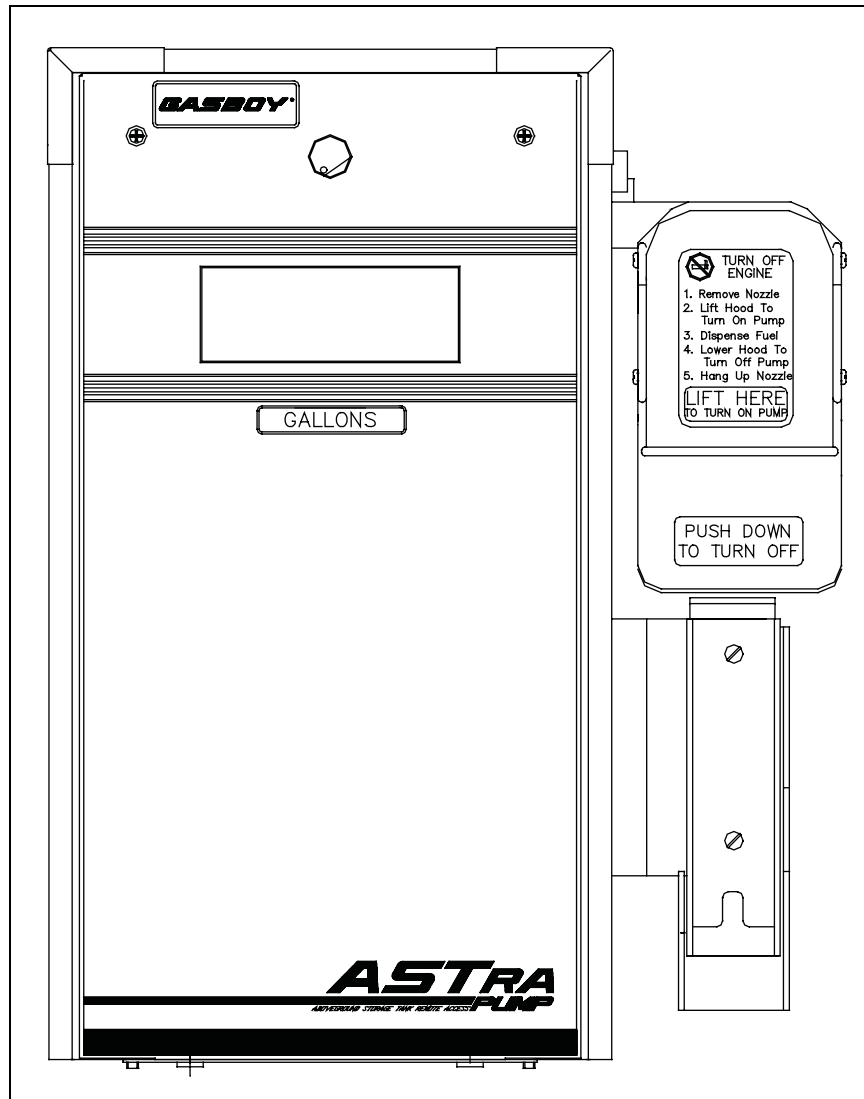
| Item # | Part Description               | Current Part | Previous Part | Quantity |
|--------|--------------------------------|--------------|---------------|----------|
| 13     | Bracket Nozzle Boot            | 026421       | -             | 1        |
| 14     | Guide-nozzle 9120              | 029027       | -             | 1        |
| 15     | Bracket Lever Reset 9120K      | 033992       | -             | 1        |
| 16     | Bushing Lever Reset 9120K      | 017234       | -             | 1        |
| 17     | Stop-eccentric Plastic         | 063204       | -             | 1        |
| 18     | Washer, .264 X .500 X .030     | N16599-123   | -             | 1        |
| 19     | Screw Rd Hd Phil 8-32x1/2      | Q11560-53    | -             | 1        |
| 20     | Nut Hex Slf Lock 5/16-18       | Q10218 10    | -             | 2        |
| 21     | Nut, Metric, Flange            | M00414B005   | -             | 4        |
| 22     | Nut, Metric Serrated           | M00414B002   | -             | 8        |
| 23     | Rivet                          | 047211       | -             | 2        |
| 24     | Cap Plug 2" Blk Plastic        | Q10554-16    | -             | 1        |
| 25     | Plug Cap Plastic               | Q10554-06    | -             | 1        |
| 26     | Screw Hex Serr Flng Hd         | Q10253-02    | -             | 4        |
| 27     | Nut 1/2 Conduit Seal           | K89681       | -             | 1        |
| 28     | Hook-Noz; 87, 88B/D, 91 (Mach) | 003732       | -             | 1        |
| 29     | Grommet, .875 OD X .375        | N15941-42    | -             | 1        |
| 30     | Pin GRV Type 5 1/8X1           | K63742       | -             | 1        |
| 31     | Cover Nozzle Boot BTM          | 026419       | -             | 1        |
| 32     | Grommet DSCH-3/4"              | 028930       | -             | 1        |

## 9823K



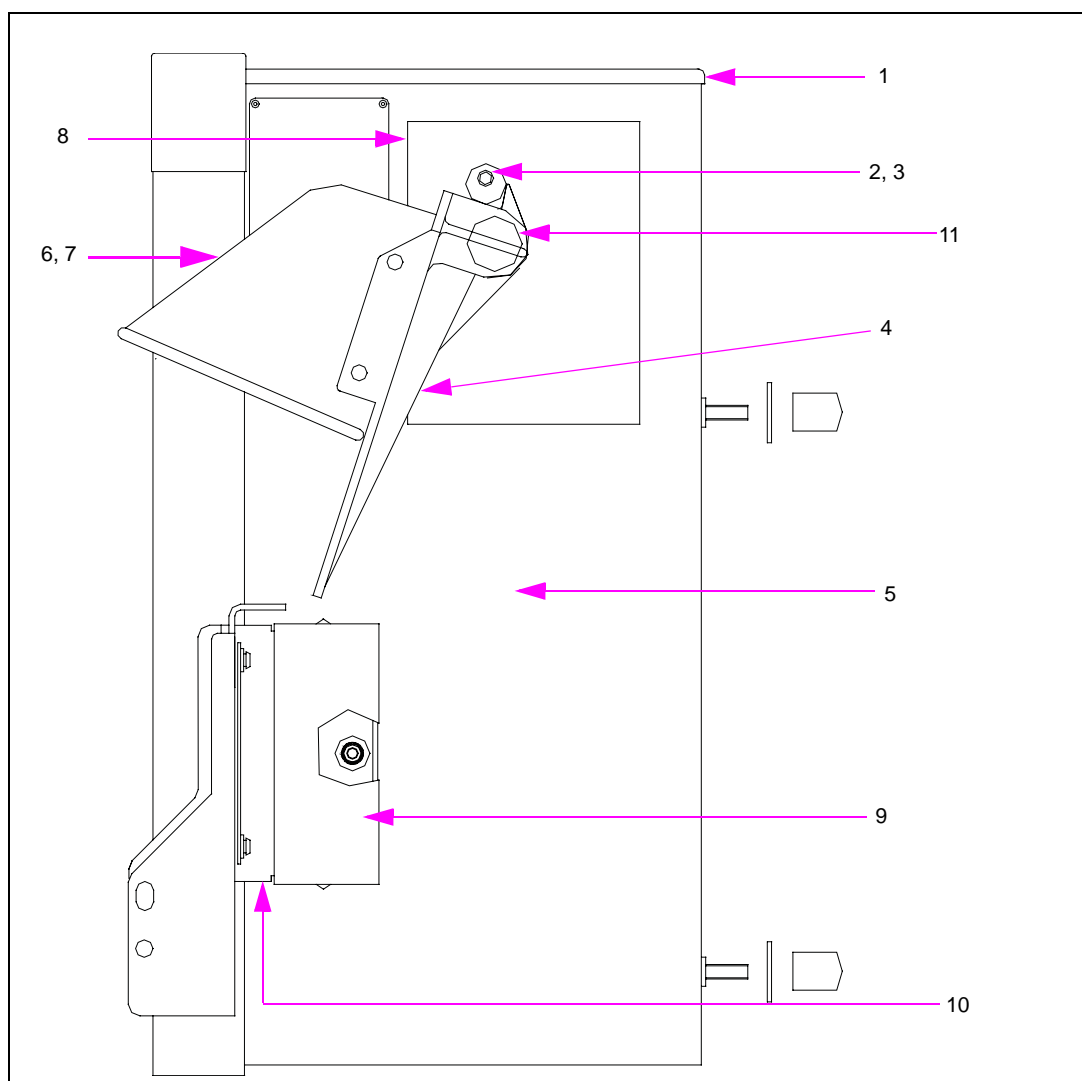
| Item # | Part Description            | Current Part | Previous Part | Quantity |
|--------|-----------------------------|--------------|---------------|----------|
| 1      | Panel RH Side 9X20K         | M06579B002   | -             | 1        |
| 2      | Panel LH Side 9820K         | M06581B002   | -             | 1        |
| 3      | Panel Back 9X20K            | M06578B003   | -             | 1        |
| 4      | Assembly, Front Panel 9820K | M06580A002   | -             | 1        |
| 5      | Assembly, Top Panel 9X20K   | M06758A001   | -             | 1        |
| 6      | Window, Totalizer 9 Digit   | 069076       | -             | 1        |
| 7      | Nut, Metric, Flange         | M00414B005   | -             | 2        |
| 8      | Lock-Door w/Clip (2" CAM)   | 035017       | -             | 2        |
| 9      | Plug Cap Plastic            | Q10554-06    | -             | 1        |
| 10     | Grommet, .875 OD X .375     | N15941-42    | -             | 1        |
| 11     | Nut, Metric Serrated        | M00414B002   | -             | 8        |
| 12     | Cap Plug 2" Blk Plastic     | Q10554-16    | -             | 1        |
| 13     | Grommet Dsch -3/4"          | 028930       | -             | 1        |

## Remote Register - Front View



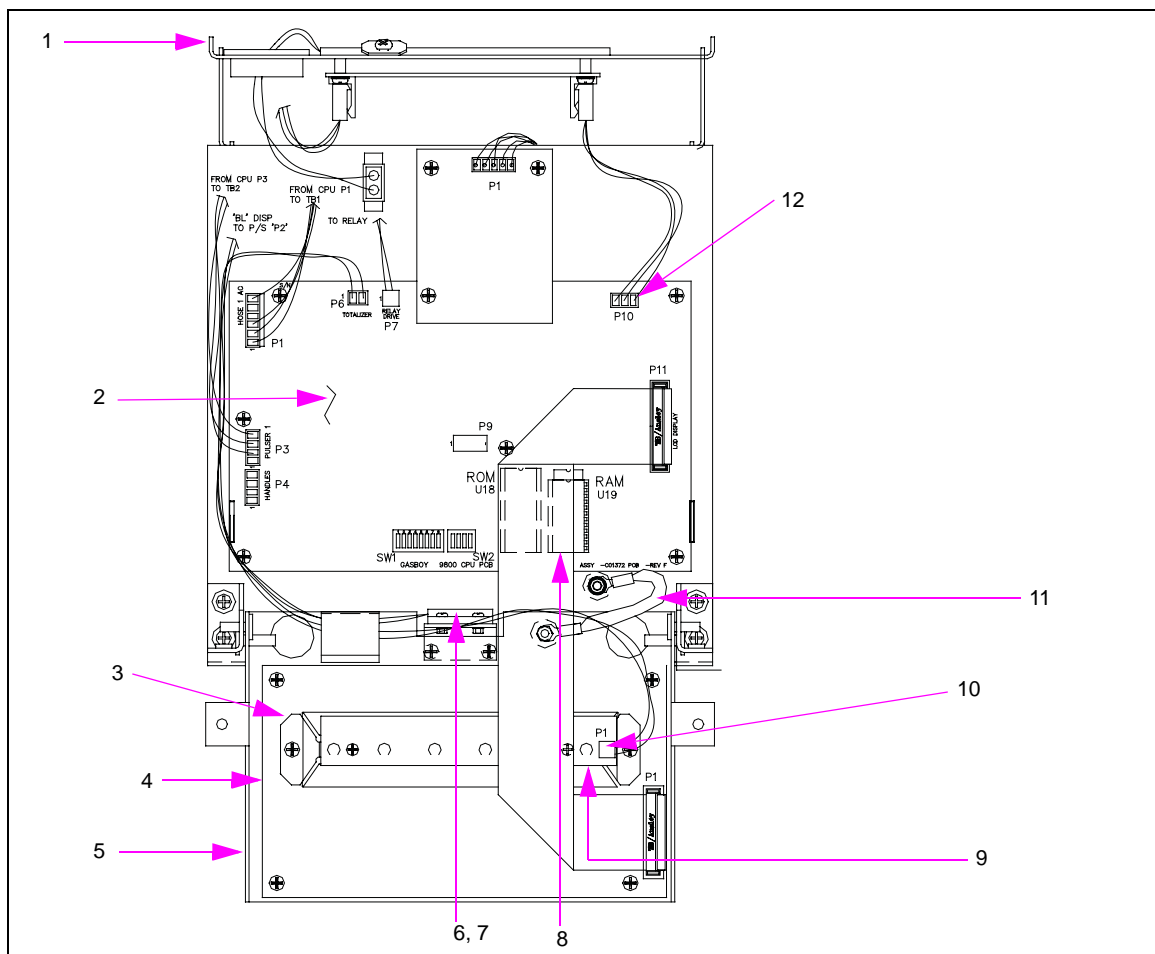
| Item # | Part Description       | Current Part | Previous Part |
|--------|------------------------|--------------|---------------|
| 1      | 115 V Register (9823K) | C06676       | -             |
| 2      | 230 V Register (9823K) | C06715       | -             |

## Remote Register - Side View



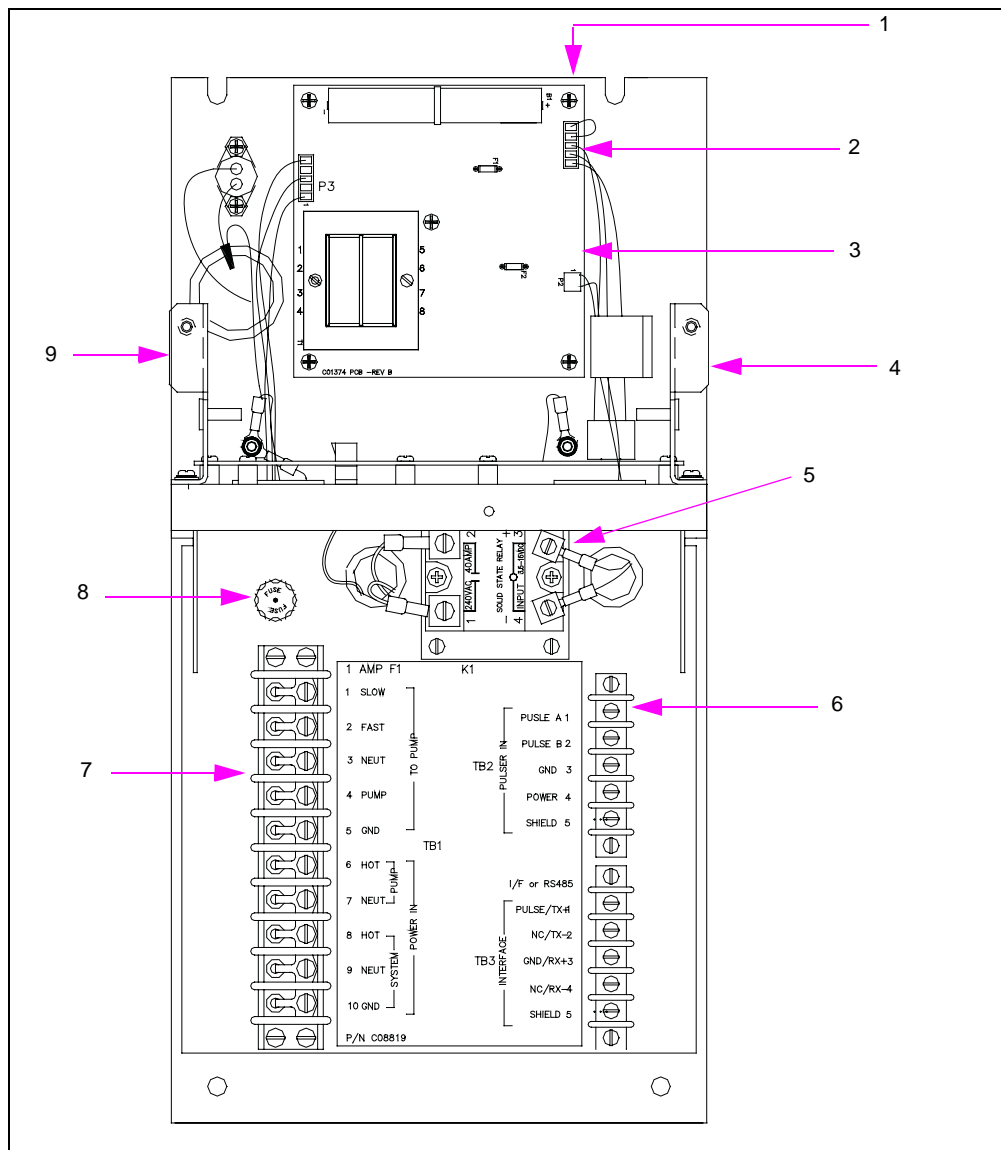
| Item # | Part Description                  | Current Part | Previous Part |
|--------|-----------------------------------|--------------|---------------|
| 1      | Panel, Top Cover, 9820 Register   | 040996       | -             |
| 2      | Stop                              | C09585       | -             |
| 3      | Cushion Sleeve                    | C09584       | -             |
| 4      | Lever, Control, 9820 Mach         | 003771       | -             |
| 5      | Housing Weld Assy.                | 040999       | -             |
| 6      | Hood                              | 029416       | -             |
| 7      | Hood, Support Assembly            | 063507       | -             |
| 8      | Bearing Plate Assembly            | 045988       | -             |
| 9      | Cover                             | 015760       | -             |
| 10     | Bracket, Tamper Proof             | 015694       | -             |
| 11     | Roll Pin, 1/8 X 1-3/8 (Not Shown) | 042657       | -             |

## Remote Register Chassis Assembly - Top View



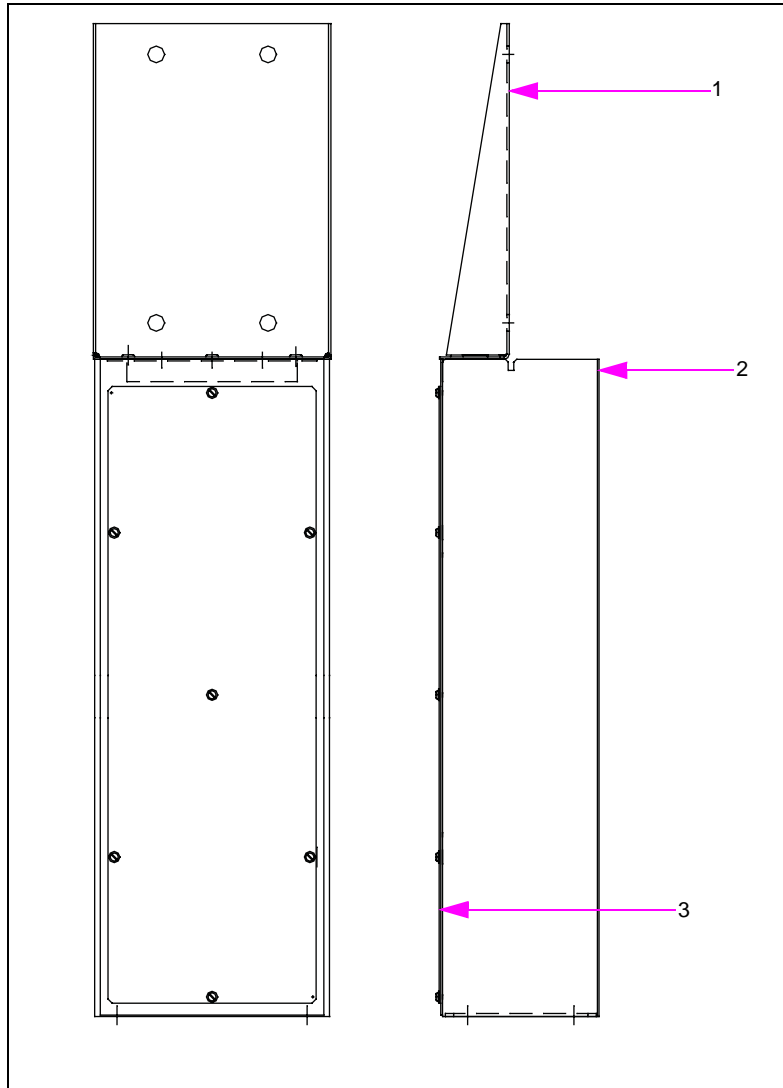
| Item # | Part Description                  | Current Part | Previous Part |
|--------|-----------------------------------|--------------|---------------|
| 1      | Weld Assy., Chassis               | C35584       | -             |
| 2      | PCB Assy., CPU 120 VAC            | C06394       | -             |
| 3      | Reflector, LCD Backlight          | C35399       | -             |
| 4      | PCB Assy., LCD Display            | C06387       | -             |
| 5      | Bracket Assy., Display Door       | C35543       | -             |
| 6      | Cable Assy., Totalizer w/ Bracket | C06673       | -             |
| 7      | Actuator, Totalizer (Not Shown)   | C01342       | -             |
| 8      | IC RAM 2K X 8                     | C01383       | -             |
| 9      | PCB Assy., LED Backlight          | C06372       | -             |
| 10     | Cable Assy., Display/Power Supply | C06668       | -             |
| 11     | Cable Assy., Ground Strap         | C06454       | -             |
| 12     | Cable Assy., DC Power             | C06679       | -             |

## Remote Register Chassis Assembly - Front View



| Item # | Part Description                | Current Part | Previous Part |
|--------|---------------------------------|--------------|---------------|
| 1      | Weld Assy, Chassis              | C35584       | -             |
| 2      | Cable Assy., DC Power           | C06679       | -             |
| 3      | PCB Assy., PS w/o Battery, 115V | C06396       | -             |
| 4      | Bracket Assy., RH Hinge         | C35538       | -             |
| 5      | Relay Assy.                     | C06681       | -             |
| 6      | Cable Assy., 5-pos. TB          | C06674       | -             |
| 7      | Cable Assy., 10-pos. TB         | C06675       | -             |
| 8      | Fuse Holder, Quick Conn.        | C09546       | -             |
| 9      | Bracket Assy., LH Hinge         | C35539       | -             |

## Remote Register Mounting Option



| Item # | Part Description                  | Current Part | Previous Part |
|--------|-----------------------------------|--------------|---------------|
| 1      | Bracket Housing Mounting          | 042073       | -             |
| 2      | Weld Assembly, Pedestal Body      | 042080       | -             |
| 3      | Cover                             | 042081       | -             |
| 4      | Side Mounting Bracket (not shown) | 015128       | -             |
| 5      | Rear Mounting Bracket (not shown) | 015127       | -             |

## Series Kits and Accessories

| Part No                                       | Description                                       |
|---|---|
| 003043  | Adapter, 9122, 3/4" NPT inlet and outlet          |
| 003044  | Adapter, 9123, 1" NPT inlet and outlet            |
| MDE-4617                                      | Ast Totalizer Kit, Installation Instructions      |
| MDE-4618                                      | Ast Pulser Kit, Installation Instructions         |
| MDE-4619                                      | Ast Vapor Recovery Kit, Installation Instructions |
| M07087K001                                    | Ast Pulser Kit; 10:1 Ratio                        |
| M07087K002                                    | Ast Pulser Kit; 100:1 Ratio                       |
| M07087K003                                    | Ast Pulser Kit; 1:1 Ratio                         |
| M07091K001                                    | Ast Totalizer Kit; Gallons                        |
| M07091K002                                    | Ast Totalizer Kit; Liters                         |
| M07425K001                                    | Ast Adapter Kit; K-version                        |
| M07494K001                                    | Ast Vapor Recovery Kit; 9820; K-version           |
| M07494K002                                    | Ast Vapor Recovery Kit; 9820 Vapor Complete       |
| M07494K003                                    | Ast Vapor Recovery Kit; 9120 Vapor Complete       |
| M07494K004                                    | Ast Vapor Recovery Kit; 9120; K-version           |
| <b>Other Options</b>                          |   |
| R18189-10<br>R18189-30<br>R18896-G1<br>026019 | Filter Type                                       |
| 030456<br>030457                              | Extra Length Hoses                                |
| C06718  | CFN/TOPKT RS-485                                  |
| C06717  | Single Pulse Output                               |
| C06722  | Dual Pulse Output                                 |
| C05818  | Resistor Assembly                                 |
| C06683  | Resistor Assembly                                 |
| 049043  | Vapor Recovery Kit                                |
| 032600  | High Hose Retriever                               |

*Spirol® is a registered trademark of Spirol International Holding Corporation. TopKAT™ is a trademark of Gasboy International. UL® is a registered trademark of Underwriters Laboratories Inc.*



**GASBOY**

© 2008 GASBOY

7300 West Friendly Avenue · Post Office Box 22087  
Greensboro, North Carolina 27420

Phone 1-800-444-5529 · <http://www.gasboy.com> · Printed in the U.S.A.

MDE-4616B 9120K and 9820K Series AST Pumps Service and Parts Manual · September 2008