

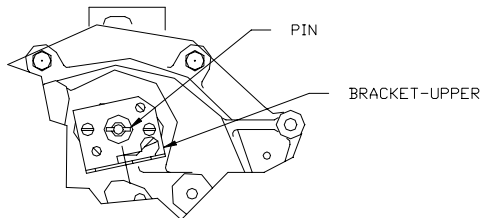
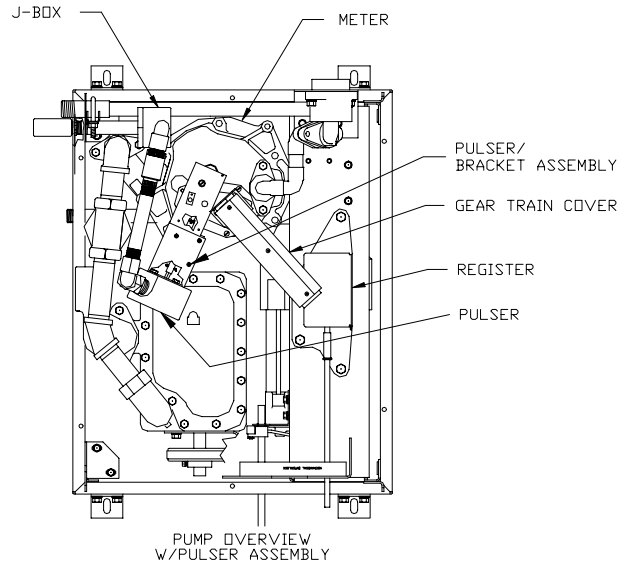
# PULSER KIT INSTRUCTIONS, 9120/7520

This instruction sheet shows how to install the 10:1/100:1 Pulser Kit for 9120/7520. Be sure to follow all warnings and safeguards as outlined in the enclosed *Warnings and Safeguards* sheet before working on the unit.

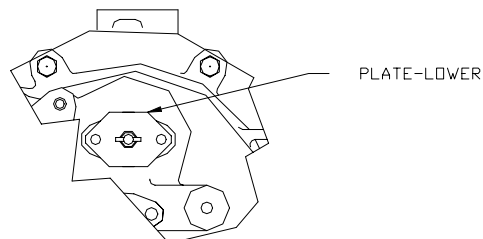
## Kit Contents (10:1 Pulser Kit 025929; 100:1 Pulser Kit 025930)

P/N	Description	Qty	P/N	Description	Qty
015451	Bracket, Pulser, 9120	1	003515	Junction Box Cover	1
051790	Screw, 1/4-20x 1/2 HHC	2	003340	Junction Box	1
068891	Washer, Lock, 1/4 1114	2	042290	Pin, Cotter, 3/64 x 1/2	2
021788	Pulser, 10:1 VR (025929 only)	1	034715	Link-Drive Pulser	1
047648	Pulser 100:1, VR (025930 only)	1	053000	Screw, 10-32 x 3/8	2
054827	Shaft-Drive Pulser	1	Z09273	Nut, Hex Keps #10-32	2
025015	Elbow, Conduit 1/2 x 45 M/F	1	022431	Gear Train, Top	1
025045	Elbow, Conduit 1/2 x 90 M/F	1	022432	Gear Train, Bottom	1
021372	Conduit, 1/2 x 4-1/2	1	034709	Link, Computer-Drive	1
053625	Screw, 6-32 x 3/8, Pn Hd	3	042130	Pin, Groove, 1/8 x 5/8	2
066400	1/2 UNY Explosion Proof Conduit Union	1	021058	Conduit Fitting, 90 M/F	1
039130	Nut, Conduit Lock	1	021986	Coupling, 1/2 Conduit	1
022050	Conduit, Pulser to Frame	1			

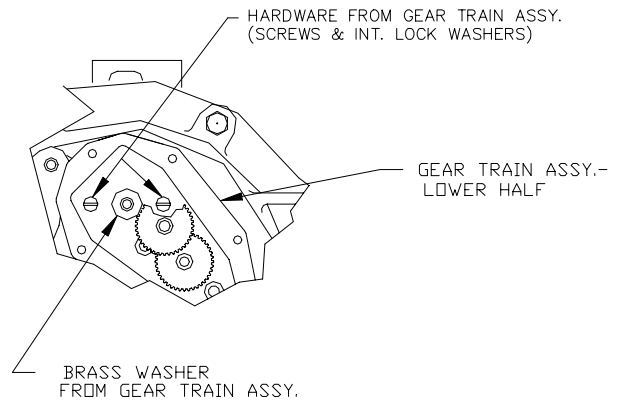
1. Remove screw that holds gear train cover to register and set aside.
2. Remove screw on other end of gear train cover fastened to bracket and set aside.
3. Remove and set aside gear train cover.
4. Remove brass link-drive from meter; this part will not be re-used.
5. Knock out pin from meter shaft and discard.
6. Remove and discard 2 screws securing bracket to meter. Remove upper bracket; reserve for later use.



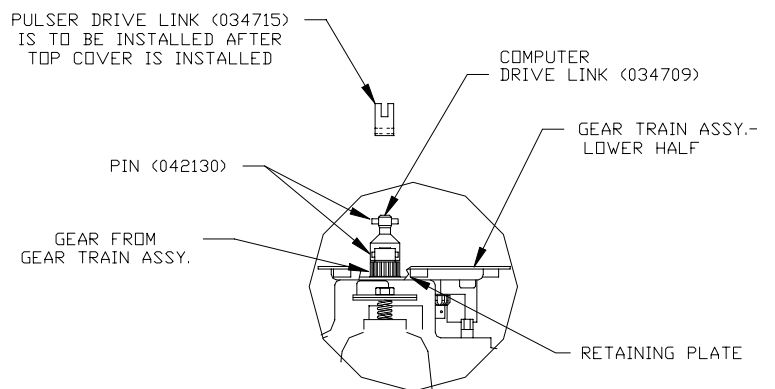
7. Remove two screws and remove retaining plate from meter (see illustration for Steps 10-12 for retaining plate location).



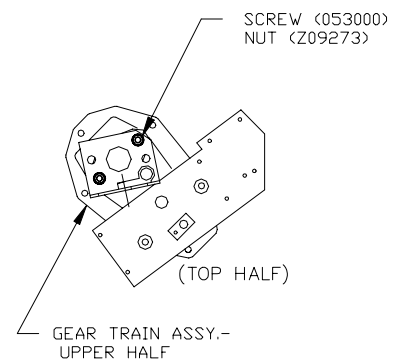
8. Install lower half of gear train assembly, 022432, using supplied screws and lock washers.
9. Install one brass washer (supplied with gear train assembly) to gear train assembly.



10. Install gear (supplied with gear train assembly) on top of brass washer.
11. Assemble one 042130 pin into 034709 link-drive.
12. Install 034715 link-drive to gear from gear train assembly with other 042130 pin.



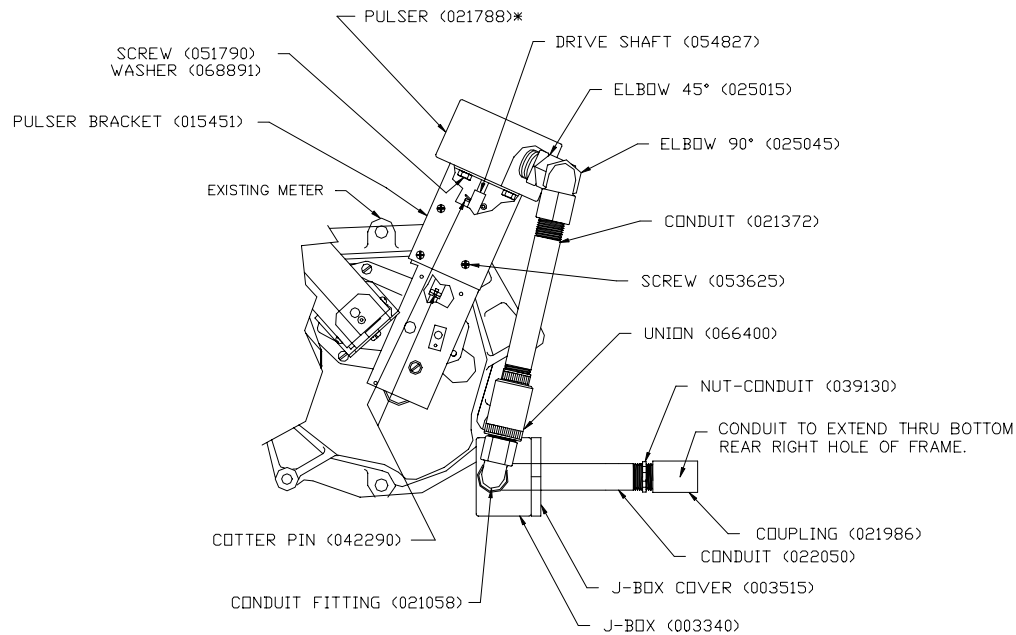
13. Assemble existing bracket (from Step 6) to 022431 gear train top with 053000 screws and Z09273 nuts. *NOTE: Remove grease and shavings from cover of gear train.*
14. Assemble gear train top to gear train bottom with four screws supplied.
15. Install 034709 brass link to pinned link-drive.
16. Re-install gear train cover set aside in Step 3, aligning pins from cover with brass links on meter and register. Once in place, assemble using existing hardware reserved from Steps 1 and 2.



*Continued on the next page*

Refer to the following diagram for Steps 17-31.

17. Remove cap from totalizer drive and install cotter pin.



18. Install drive shaft 054827 to pulser with cotter pin.

19. Install bracket to pulser with screw 051790 and washer 068891.

20. Remove red thread protector cap from pulser and wires.

21. Install 025015 elbow into pulser (grease threads).

22. Install 025045 elbow to 025015 elbow (grease threads)

23. Install 015451 pulser bracket to gear train with three 053625 screws.

24. Assemble 021372 conduit to 025045 elbow (grease threads).

25. Assemble 066400 conduit union to 021372 conduit (grease threads).

26. Assemble 021058 conduit fitting to 066400 conduit union.

27. Assemble 003340 J-box to 021058 conduit fitting.

28. Assemble 003515 J-box cover to 003340 J-box.

29. Assemble 022050 conduit to 003340 J-box.

30. Assemble 039130 nut to end of 022050 conduit.

31. Assemble 021986 coupling to 022050 conduit.