

Highline™ Super-Hi™ High Gallonage

Model No.	Description
AC4982A-MS1	Super-Hi Single One-Product Master Dispenser
AC7942A-MS1	Super-Hi Master/Satellite “Combo” Dispenser

Load Table

See attached wiring diagrams.

Domestic

FE-238A	Highline High Gallonage Master Satellite System 110/115/120 VAC
FE-240A	Highline High Gallonage “Combo” Master Satellite System 110/115/120 VAC

Export

FE-252A	Highline High Gallonage Master Satellite System 220/230/240VAC
FE-253A	Highline High Gallonage “Combo” Master Satellite System 220/230/240VAC

Operating Environment

Relative Humidity	20% to 95% non-condensing
Minimum Outside Ambient Temperature.....	-22°F (-30°C)
Maximum Outside Ambient Temperature	113°F (45°C)

Performance Requirements

Minimum Delivery Rate	30 gpm @ 35 psi inlet pressure (114 lpm @ 102 kg/cm ² inlet pressure)
or when teamed with a satellite	40 gpm @ 26 psi inlet pressure (152 lpm @ 76 kg/cm ² inlet pressure)
Meter Accuracy	± .25% from 1.5 to 15 gpm (5.7 to 57 lpm)

Weights

Super-Hi Single One-Product

Dispenser Weight	335 pounds/151 kilograms
------------------------	--------------------------

Super-Hi Master/Satellite “Combo”

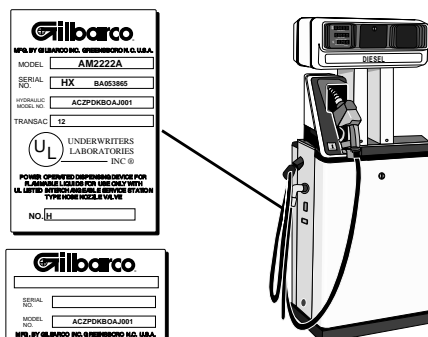
Dispenser Weight	390 pounds/176 kilograms
------------------------	--------------------------

Model Number Breakdown • Hydraulics

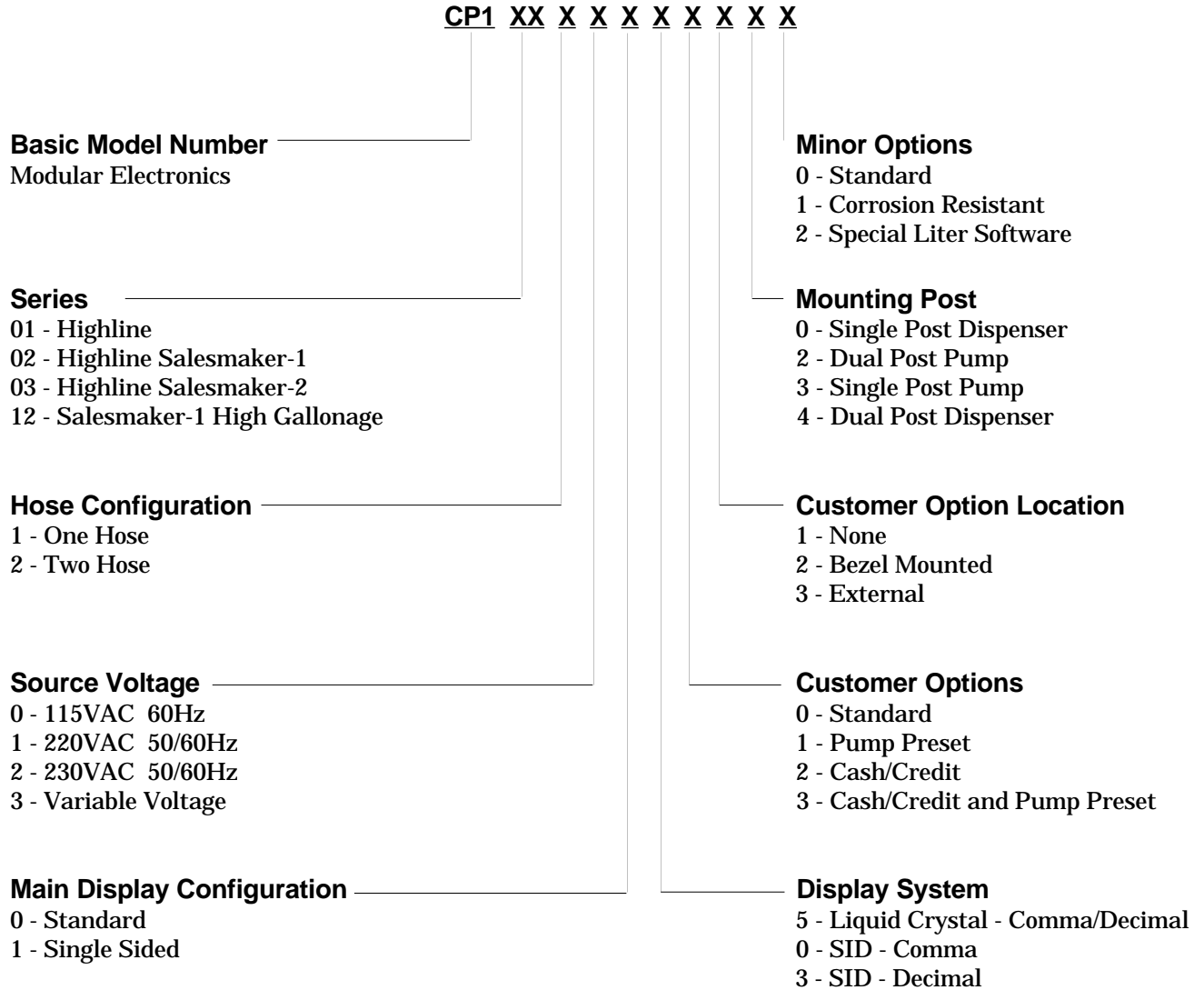
AC X X X X X X XXXXX

- A. U.S. _____
- C. Electronic Pump or Dispenser _____
- B. Highline™ Series _____
- F. International Highline Series _____
- A. Dispenser, Standard Gallonage _____
- B. Pump, Standard Gallonage _____
- C. Dispenser, Conventional High Gallonage _____
- D. Pump, Conventional High Gallonage _____
- E. Dispenser, Conventional High Gallonage Master (for satellite) _____
- F. Dispenser, Satellite (less CD module) _____
- G. Pump, PUS High Gallonage (with 1" piping) _____
- J. Pump, PUS Intermediate Gallonage (with 3/4" piping) _____
- K. Dispenser, Super-Hi™ High Gallonage Master (for satellite) _____
- L. Dispenser, Ultra-Hi™ High Gallonage Master (for satellite) _____
- M. Dispenser, Ultra-Hi Satellite (less CD module) _____
- N. Dispenser, Ultra-Hi™ High Gallonage Combo (with satellite) _____
- P. Pump, Standard Gallonage (with sump flow control) _____
- R. Pump, Conventional High Gallonage (with sump flow control) _____
- S. Dispenser, Conventional High Gallonage Combo (with satellite) _____
- T. Dispenser, Super-Hi™ High Gallonage Combo (with satellite) _____
- 2. Pump, PUS Intermediate Gallonage (with 3/4" piping and sump flow control valve) _____
- A. Single Product _____
- B. Dual One-Product _____
- C. Dual Two-Product _____
- D. Dual One-Product (rotated nozzle putdowns) _____
- G. Single Product (rotated nozzle putdowns) _____
- B. U.S. Gallons Totalizers, Vapor Recovery Nozzle Hook and Boot _____
- K. Metric Totalizers, Vapor Recovery Nozzle Hook and Standard Boot _____
- G. Metric Totalizers, Standard Nozzle Hook and Vapor Recovery Nozzle Boot _____
- N. Imperial Gallons Totalizers, Vapor Recovery Nozzle Hook and Standard Boot _____
- A. Fillup _____
- B. Preset _____
- A. First Major Revision _____
- M. Universal Hydraulics (value analyzed) _____

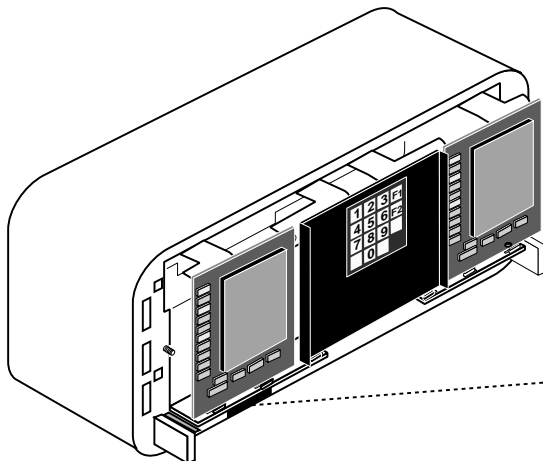
Reference _____



Model Number Breakdown • Electronics



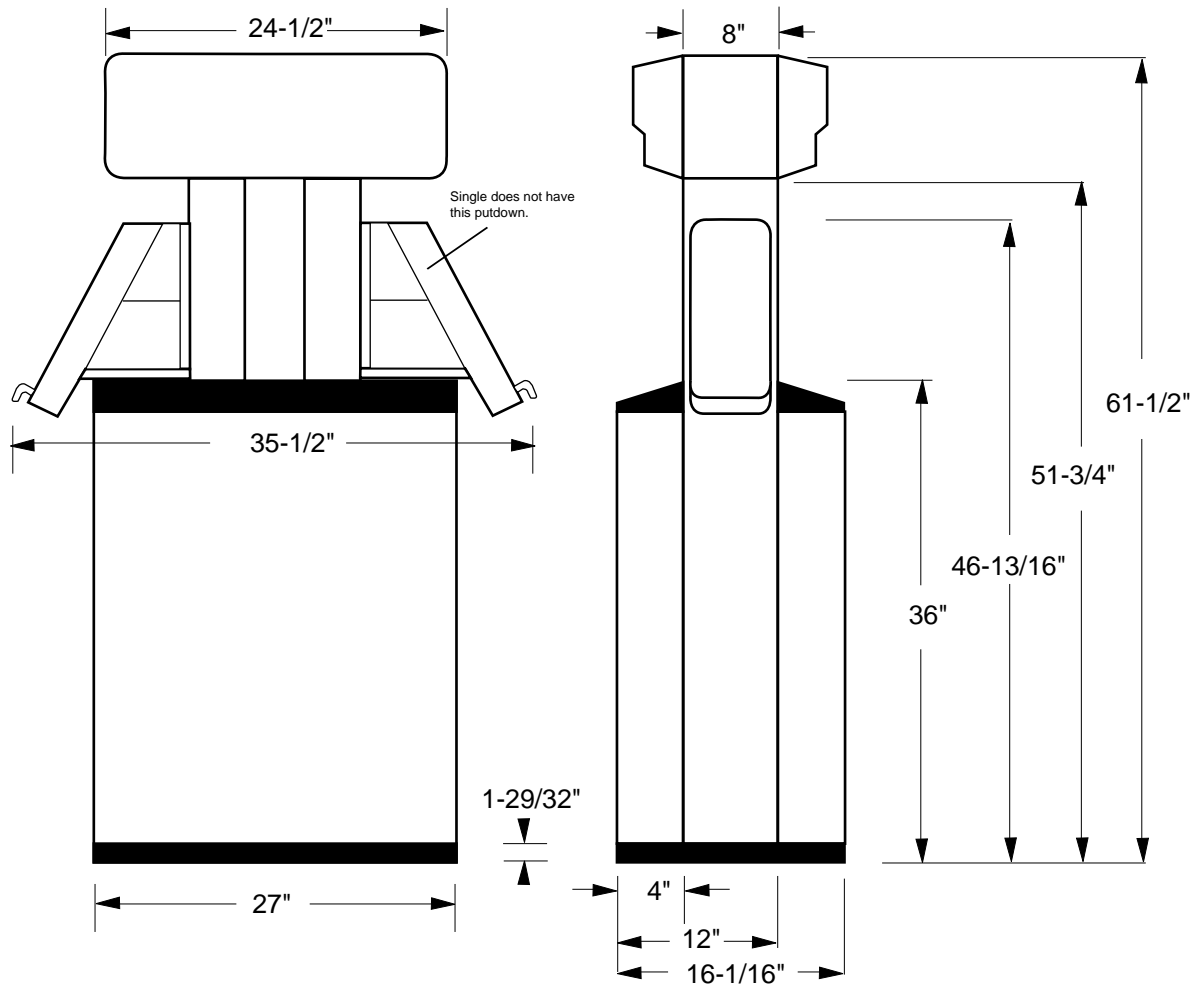
Thirteen digit electronics model number is stamped on plate attached to bottom of electronics module.



Elevation

Highline™ Super-Hi™ High Gallonage Dispenser

Single One-Product Master or Master/Satellite “Combo”



Screening Specifications

Lower Doors

Overall: 40.83" H x 28.34" W

(Total Blank Area)

Flat Surface: 32.28" H x 18.67" W

(Maximum Viewing Area)

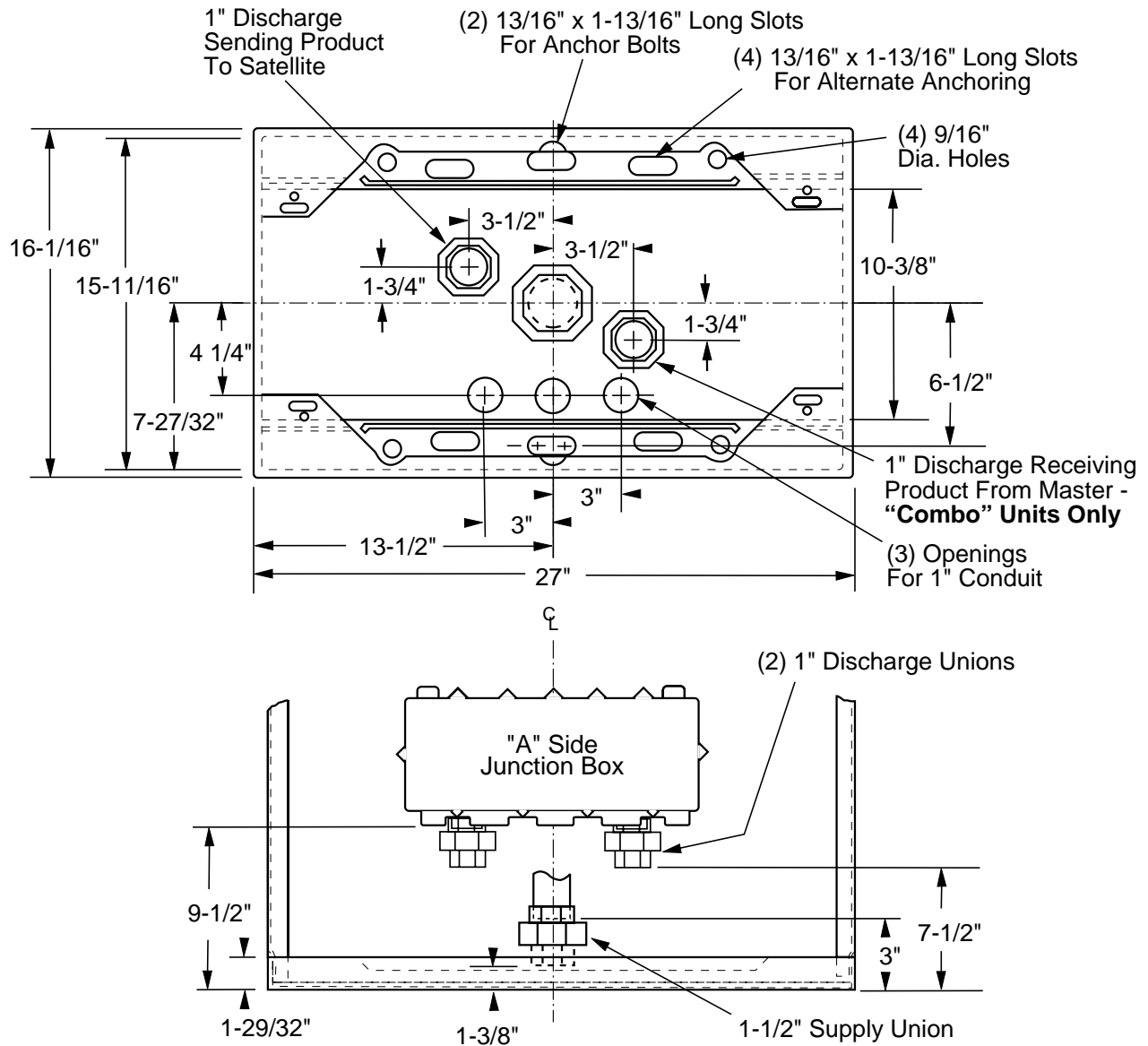
Brand Panels

Overall: 2.24" H x 21.5" W

Screening Area: 1.86" H x 20.88" W

Highline™ Super-Hi™ High Gallonage Dispenser

Single One-Product Master



Highline™ Super-Hi™ High Gallonage Dispenser

Master/Satellite "Combo"

