

# VAPOR RECOVERY OVERHEAD RETRACTOR INSTALLATION INSTRUCTIONS

MODEL NO. 884-004-5 (6.5 ft. post) Dual Hose  
MODEL NO. 884-022-5 (6.5 ft. post) Coaxial Hose  
MODEL NO. 884-033-5 (6.5 ft. post) w/out Hose Clamp

The Red Jacket Overhead Retractor is certified for use in Stage II vapor recovery installations under Executive Order G-70-14-D of the California Air Resources Board.

**WARNING** IT IS THE RESPONSIBILITY OF THE INDIVIDUAL PERFORMING THE INSTALLATION TO COMPLY WITH ALL LOCAL CODES AND SAFETY REGULATIONS REGARDING GASOLINE AND VAPORS.

## INSTALLATION

The maximum hose loop under the nozzle must be 10 inches when the nozzle is returned. See Figure 1

**CAUTION** DO NOT FASTEN THE POST TO THE ELECTRICAL HEAD (UPPER PORTION) FOR SUPPORT.

1. Remove the front panel(s) at the top of the dispenser. Drill a 3/8" and a 3/4" hole in the post and drill one 3/8" mounting hole where the post can be solidly secured through the slide frame. Use a spacer when required as in Figure 1 below. We recommend aluminum tubing as needed. Use care to avoid plumbing and electrical conduit.
2. Mount the angle clip by lagging into the curb the 3/8" lag bolt provided. Drill a 3/8" and a 3/4" hole in the post to secure to the angle clip using (1) 3/8" - 16 x 1" cap screw, (2) lockwashers, (1) flat washer, and nut as shown in Figure 3.
3. Mount the 3/8" - 16 x 2 cap screw, (2) lockwashers, (1) flat washer, (spacer) and (1) nut into the side as shown in Figure 2.
4. Cover the post holes with the caplugs provided.

The dispenser itself must be securely lagged into the concrete on top of the island to prevent any wobbling motion.

## HOSES AND SWIVELS

Fluid Hose: 5/8 inch inside diameter, U.L. listed for gasoline. 12 foot length.\*

Vapor Hose: 5/8 inch inside diameter, U.L. listed for gasoline. Length as needed to permit natural drainage when hanging, but sufficient to avoid strain on the hose at the dispenser swivel when fully extended.\*

\*Hose length referenced is based on standard softwall hose. Mounting configuration, hose type and climate may effect flexibility of hose. (Retractors for use with 5/8" or 3/4" I.D. Hose are available with either standard or heavy duty reels.)

Swivels: 360° in line, .495 inches minimum inside diameter, one on each end of both hoses.

Hose Ties: Minimum of five (5), Panduit DHC 1.12 x 1.75, or equivalent.

1. Slip the hose into the clamp provided and adjust until the bottom of the loop clears the curb. See Figure 1 below. Tighten securely.
2. Pull the hose to its full length. It should extend easily and then retract completely.
3. If adjustment is required in spring tension, remove the (4) screws from the cover, extend cable approximately 18", wind or unwind one turn at a time and repeat step 2.

FIGURE 1

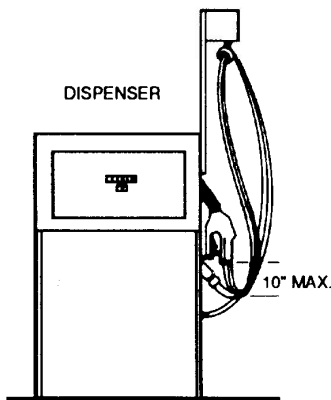


FIGURE 2

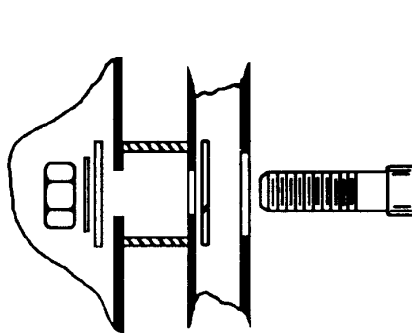
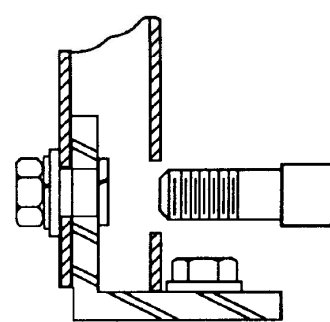


FIGURE 3



by  VEEDER-ROOT

125 Powder Forest Drive • Simsbury, CT 06070  
Tel: (860) 651-2700 • Fax: (860) 651-2719

051-146-1 Rev. F