



# **GASBOY**

---

## **SERIES 9120**

## **COMPACT COMMERCIAL PUMPS**

## **PARTS LIST**

**035236**

**REV. 03/07/03**

Copyright 2003 by Gasboy International LLC All rights reserved.  
The information in this document is confidential and proprietary. No further disclosure shall be made without permission from Gasboy International LLC. Gasboy International LLC believes that the information in this document is accurate and reliable. However, we assume no responsibility for its use, nor for any infringements of

patents or other rights of third parties resulting from its use. We reserve the right to make changes at any time without notice.

**GASBOY INTERNATIONAL LLC LANSDALE, PA**

## **IMPORTANT WARNINGS AND SAFEGUARDS**

**Gasoline and petroleum products are flammable. To avoid injury or death to persons or damage to equipment or property, follow these listed warnings and other warnings and precautions outlined in this manual when installing, using, or working around this equipment. Check with GASBOY Technical Services for compatibility of liquids with pump materials.**

### **TURN OFF AND LOCK OUT ALL POWER TO PUMP BEFORE PERFORMING SERVICE, MAINTENANCE OR IN THE EVENT OF A FUEL SPILL.**

All products must be installed by a qualified installer and used in conformance with all building, fire, and environmental codes and other safety requirements applicable to its installation and use, including, but not limited to, NFPA 30, NFPA 30A, NFPA 395 & NFPA 70. A qualified installer is familiar with fuel systems installations under the above stated building, fire, and environmental codes and other safety requirements for the particular type of installation.

This product is only part of a fuel dispensing system and additional equipment and accessories, such as, but not limited to, breakaway connectors, shear valves, pressure regulators, flow limiters, and other safety devices may be necessary to meet the applicable codes.

For maximum safety, we recommend that all employees be trained as to the location and procedure for turning off power to the entire system. Instructions regarding proper operation of the equipment along with the appropriate safety warnings should be posted in plain view at the fuel island.

Before performing service or maintenance (including changing of fuel filters or strainers) or in the event of a fuel spill, turn off and lock out all power to the system. In battery-powered pumps, disconnect power source. In submersible pump applications, turn off and lock out power at the master panel and close any impact valves to the submersible pump and any other dispensers which use that submersible pump. AC power can feed back into a shut-off dispenser when dispensers

share a common submersible pump or starter relay. Also block islands so no vehicles can pull up to the dispenser when the dispenser is being worked on.

**DO NOT** use Teflon tape for any pipe threads in the product.

**DO NOT** use consumer pumps for pumping fuel or additives into aircraft.

**DO NOT** use commercial pumps for direct fueling of aircraft without filters and separators necessary to ensure product purity.

**DO NOT** use where sanitary design is required (for food products for human consumption) or with water-based liquids.

**DO NOT** smoke near the pump or when using the pump.

**DO NOT** use near open flame or electrical equipment which may ignite fumes.

**DO NOT** permit the dispensing of gasoline or other petroleum products into a vehicle with its motor running.

**DO NOT** permit the dispensing of gasoline or other petroleum products into unapproved containers or into approved containers in or on vehicles including trucks. All containers must be filled on the ground to prevent static discharge. Always use Approved and Listed hoses and nozzles with electric pumps and dispensers.

**DO NOT** block open the nozzle in any manner. Nozzles shall conform to UL and NFPA code requirements for attended or unattended service.

**DO** ensure that the pump is equipped with proper filters based on the product being dispensed and its intended use.

**DO** wear safety goggles and protective clothes when dispensing any liquid which may be potentially harmful or hazardous.

**DO** keep all parts of body and loose clothing clear of belts, pulleys, and other exposed moving parts at all times.

**DO** require washing and changing of clothes if fuel is spilled on a person or his/her clothing. Keep away from open flames, sparks, or people smoking.

**DO** provide a receptacle for catching product from pump/meter when servicing.

**DO** clean up product spills on the driveway. Turn off and lock out all power prior to cleanup.

**DO** insure pump is properly grounded.

**DO** insure hose is compatible with fluid being dispensed.

**DO** inspect hose, nozzle, and pump on a regular basis for wear, damage, or other conditions which may create a safety or environmental hazard.

**DO** make sure all pipe threads are properly cut and the inside reamed to remove burrs. Use UL classified gasoline-resisting compound on all joints of gasoline handling piping. Sealing compound must also be resistant to Gasohol (Ethanol and Methanol). Use gasoline-resistant pipe compound on male threads only; pipe compound used on female threads can be squeezed into the supply line where it can enter the product stream and become lodged in the pump or meter.

**DO** ensure that junction box covers are in place and properly tightened. Mating surfaces between the box and cover must be free of dirt, nicks, and scratches. All unused entries into the junction box must be properly plugged.



---

# CONTENTS

---

|  |    |
|--|----|
| Using This Parts List.....                                 | 1  |
| Panel and Trim Assemblies                                  |    |
| Panel and Trim Assembly - Front and Side.....              | 2  |
| Panel and Trim Assembly - Rear and Nozzle Hook Detail..... | 4  |
| Dial Enclosure Assembly.....                               | 6  |
| Final Assembly - Covers Removed.....                       | 8  |
| Discharge Assemblies                                       |    |
| Discharge Assembly, Standard.....                          | 10 |
| Discharge Assembly, Vapor Recovery.....                    | 11 |
| Meter Assemblies   |    |
| Meter Assembly, Units Without Pulser Option.....           | 12 |
| Meter Assembly, Units With Pulser.....                     | 14 |
| Meter Breakdown - Exploded View.....                       | 16 |
| Motor Assembly.....  | 18 |
| Pump Assembly.....   | 20 |
| Pumping Unit Breakdown - Exploded View.....                | 22 |
| Reset/Register Assembly                                    |    |
| Reset/Register Assembly.....                               | 24 |
| Reset Shaft Assembly.....                                  | 26 |
| Switch Rod Assembly Breakdown.....                         | 27 |
| Cam and Operating Shaft Assembly.....                      | 28 |
| Reset Mounting Plate Assembly.....                         | 30 |
| Pulser Assembly, 10:1, 100:1 (Optional).....               | 32 |
| High Hose Retriever Option.....                            | 33 |
| 9120 Series Kits and Accessories.....                      | 34 |



---

# **PARTS LIST**

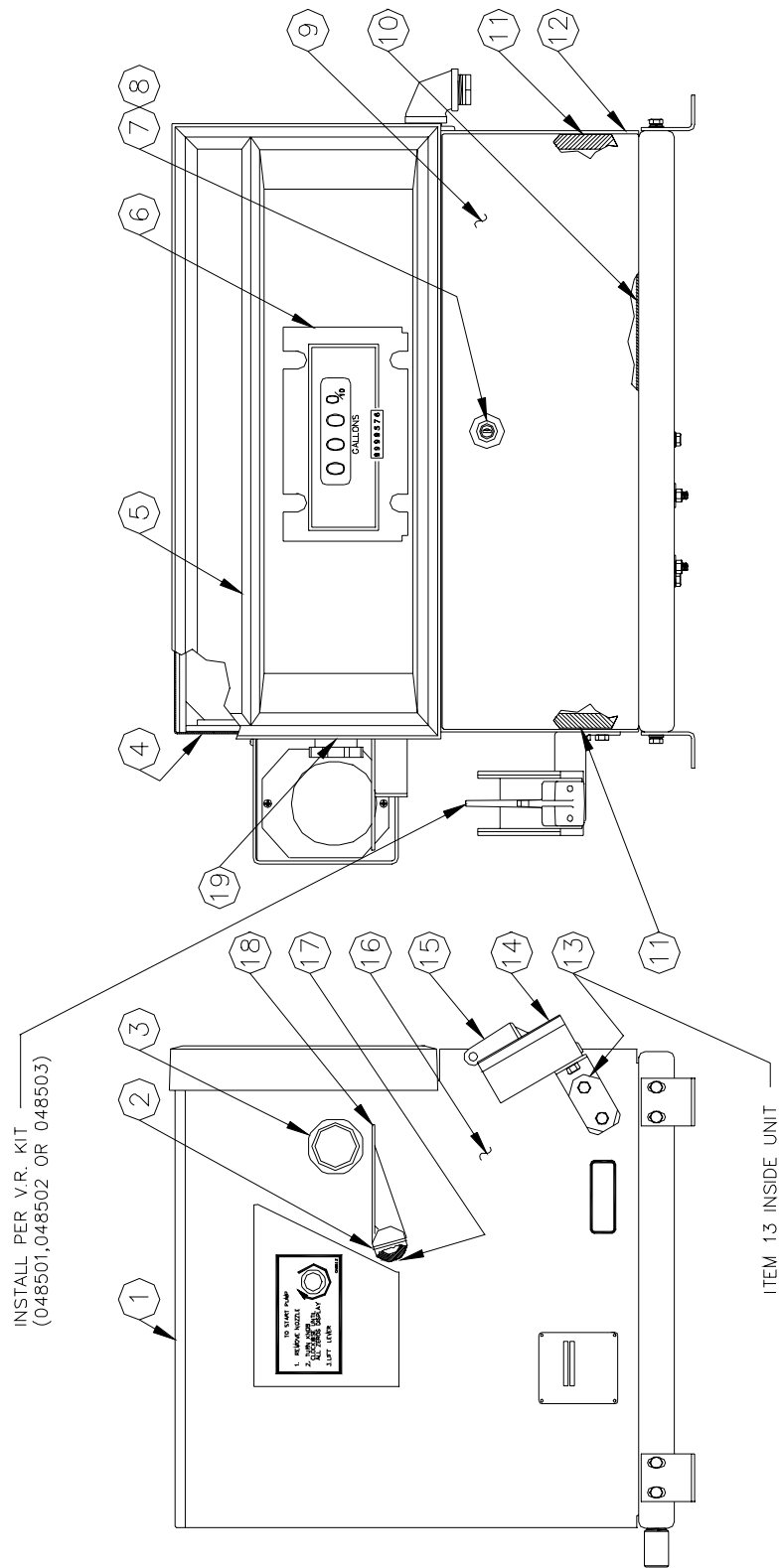
---

## **USING THIS PARTS LIST**

The following pages list parts information for the Series 9120 pumps. Using part numbers when ordering will expedite your order and reduce the possibility of the wrong parts being shipped.

Procedures requiring disassembly of portions of the pump/dispenser should be performed by competent service personnel. Do not depend upon the repair service of a general mechanic unless he is thoroughly familiar with the mechanism. GASBOY has a distributor network which services fuel dispensing equipment and management systems in every section of the country.

PANEL AND TRIM ASSEMBLY - FRONT AND SIDE



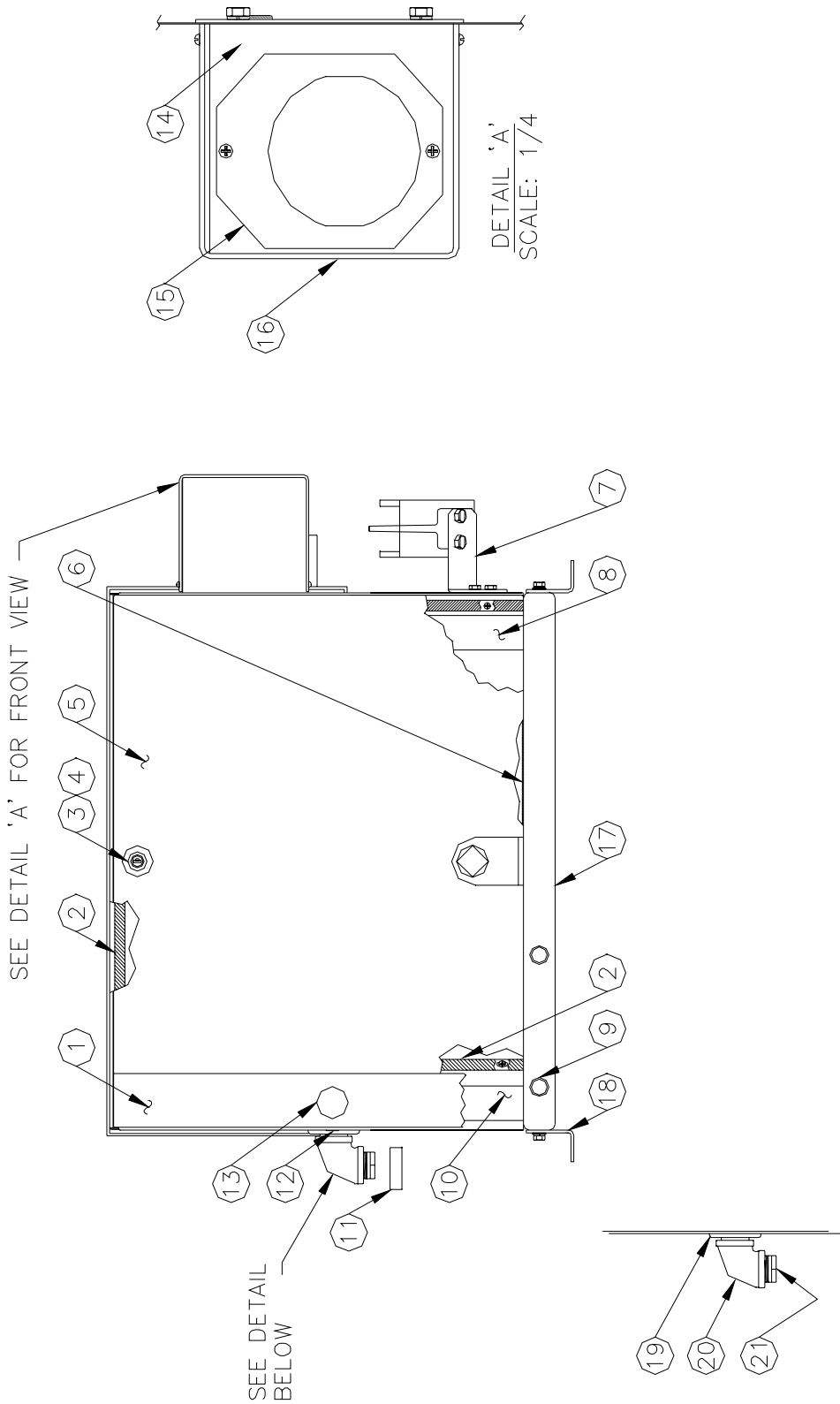


**PANEL AND TRIM ASSEMBLY - FRONT AND SIDE**

| Item | Part No. | Description   |
|------|----------|---|
| 1    | 022786   | Cover, Top Weld, 9120 Series                                  |
| 2    | 043241   | Roll-Pin, 3/16 x 3/4  |
| 3    | 032562   | Knob, Reset   |
| 4    | 027078   | Gasket, Rubatex, R411N, 1/16 x 1/2                            |
| 5    |          | Dial Enclosure Assembly ( <i>See breakdown</i> )              |
| 6    | 025578   | Dial Mask, Silkscreened, 9120                                 |
| 7    | 035018   | Lock and Key  |
| 8    | 026799   | Gasket, Lock, White   |
| 9    | 041607   | Panel, Front, 9120 Series ( <i>See Note</i> )                 |
| 10   | 027073   | Gasket, Rubatex, R411N 1/16 x 1/4                             |
| 11   | C08741   | Gasket, Rubatex, R411N, 3/16 x 1/2                            |
| 12   | 041603   | Panel, Right Weld, 9120 Series ( <i>See Note</i> )            |
|      | 041605   | Panel, Right Weld, VR, 9122 ( <i>See Note</i> )               |
| 13   | 046997   | Plate, Support Nozzle Hook, 9122                              |
| 14   | 029027   | Guide-Nozzle 9120   |
| 15   | 003732   | Hook - Nozzle (Standard)                                      |
|      | 003719   | Hook - Nozzle, 9120VR (Shown)                                 |
| 16   | 041601   | Panel, Left Weld Assy, 9122 ( <i>See Note</i> )               |
| 17   | 028935   | Grommet 7/8 ID x 1-5/8 OD                                     |
| 18   | 033926   | Control Lever Assy. 9120 ( <i>Parts not sold separately</i> ) |
| 19   | 028936   | Grommet, 5/16 ID x 1" OD                                      |

**NOTE:** Specify standard color (black, white, red). If not a standard color, specify serial number of pump/dispenser.

### PANEL AND TRIM ASSEMBLY - REAR AND NOZZLE HOOK DETAIL



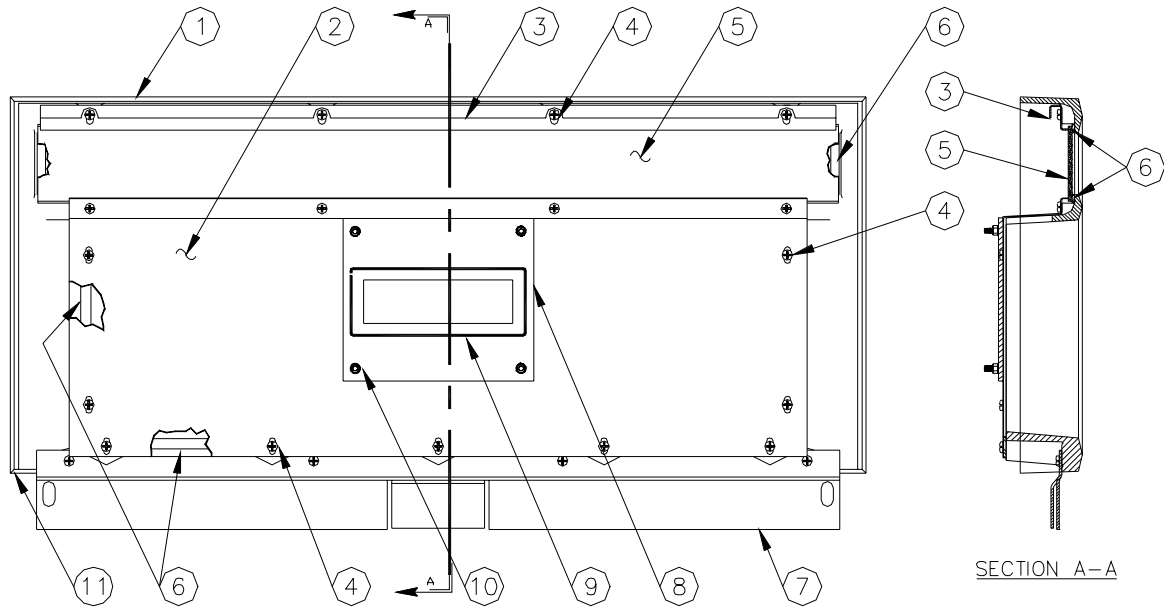
## PANEL AND TRIM ASSEMBLY - REAR AND NOZZLE HOOK DETAIL

| Item | Part No. | Description  |
|------|----------|--|
| 1    | 015083   | Panel-Rear 9120 (See Note 1)                             |
| 2    | C08741   | Gasket 3/16 x 1/2  |
| 3    | 035018   | Lock and Key   |
| 4    | 026799   | Gasket, Lock, White                                      |
| 5    | 041606   | Panel, Rear, 9122 (See Notes 1 & 2)                      |
| 6    | 027073   | Gasket, Rubatex, R411N 1/16 x 1/4                        |
| 7    | 018598   | Bracket, Nozzle Hook, 9122                               |
| 8    | 018588   | Brkt-Mtg Hsg LH 9120                                     |
| 9    | 047213   | Plug-Hayco 1"  |
| 10   | 015099   | Brkt-Support RH Weld Assy.                               |
| 11   | 064551   | Swivel Adapter VRR (Only on vapor recovery ready models) |
| 12   | 047214   | Plug-Hayco 1/2"  |
| 13   | 047211   | Plug-Hayco 1-3/8   |
|      | 028934   | Grommet-Discharge, VR only                               |
| 14   | 026723   | Frame, Nozzle Panel Weld, 9120 (See Note 1)              |
| 15   | 003341   | Boot-Nozzle 9120(F)                                      |
|      | 003317   | Boot-Nozzle Vapor Recovery Mach.                         |
| 16   | 022784   | Cover-Nozzle Boot 9120                                   |
| 17   | 026721   | Frame-weld 9120 (See Note 1)                             |
| 18   | 026399   | Foot, Mounting, 9120                                     |
| 19   | 028960   | Grommet Discharge 1"                                     |
| 20   | 024895   | Elbow, 1 x 90°   |
| 21   | 017270   | Bushing 3/4 x 1 (9122/9124 only)                         |

**NOTE 1:** Specify standard color (black, white, red). If not a standard color, specify serial number of pump/dispenser.

**NOTE 2:** The standard rear panel is 22-15/32" wide. Some units manufactured before 1993 contain a rear panel which is the full width of the cabinet (25" wide). Please specify, at the time of order, if you require the larger panel.

## DIAL ENCLOSURE ASSEMBLY

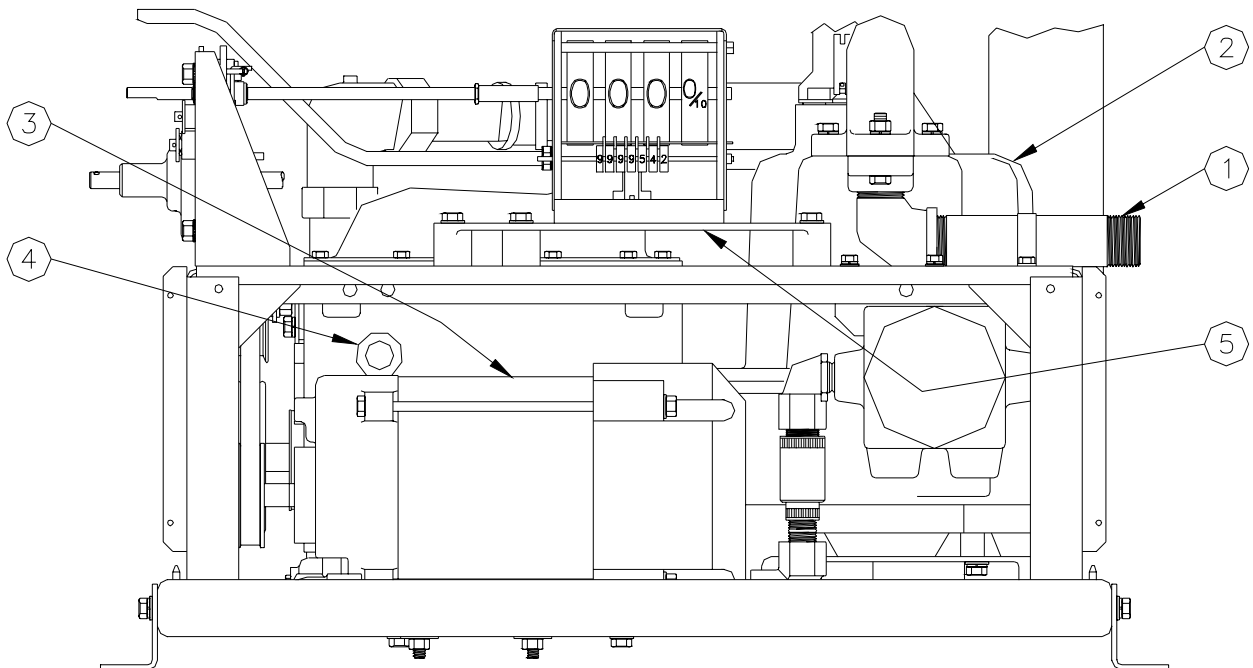
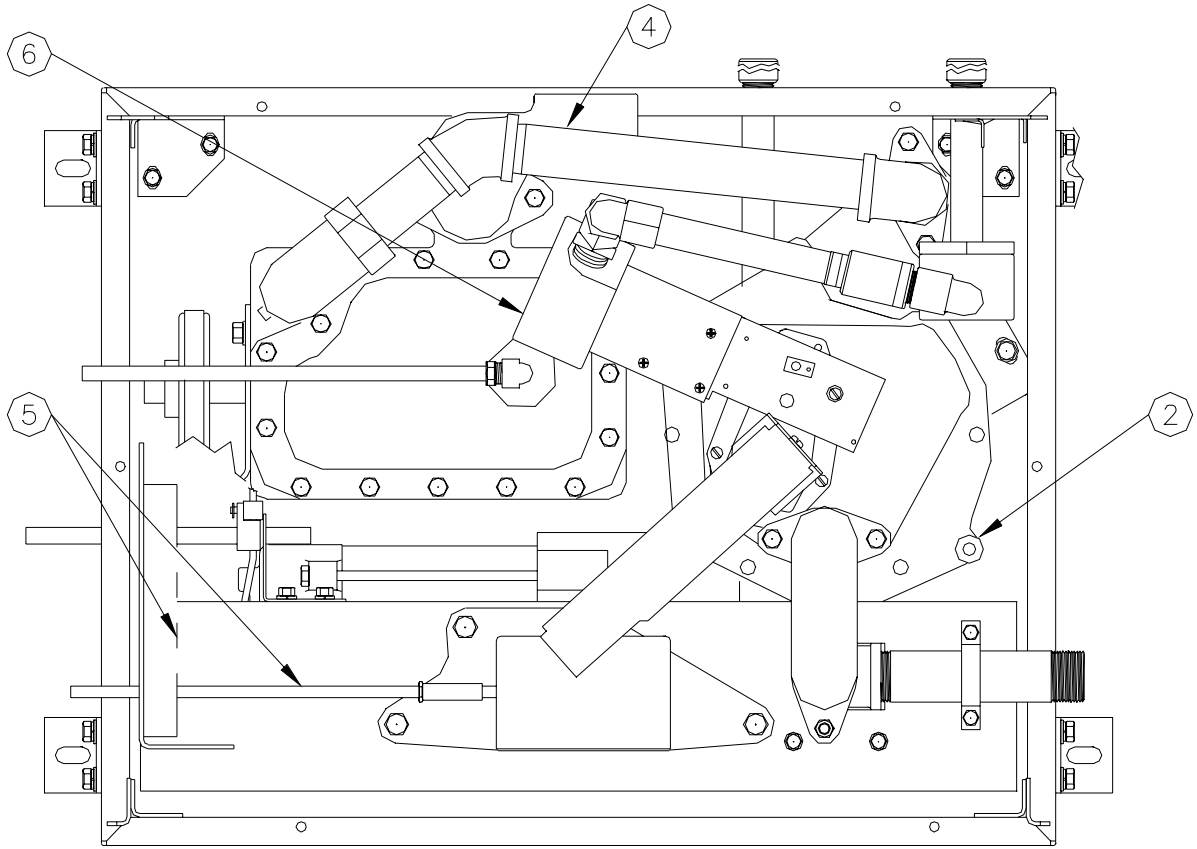


| Item | Part No. | Description   |
|------|----------|---|
| 1    | 025565   | Dial Enclosure Assembly<br><i>(Includes all parts listed below. When ordering, must also specify item 2 silkscreened dial enclosure.)</i> |
| 2    | *025563  | Silkscreened Dial Enclosure, Gallons 9122/9123  |
|      | *026257  | Silkscreened Dial Enclosure, Gallons 9124/9125  |
|      | *025564  | Silkscreened Dial Enclosure, Liters 9122/9123   |
|      | *026272  | Silkscreened Dial Enclosure, Liters 9124/9125   |
|      |          | <i>(For all other applications, specify serial number of pump.)</i>   |
|      |          | <i>NOTE: Item 2 not sold separately. Must order entire assembly, item 1.</i>  |
| 3    | 011309   | Latch Bar Bezel Assy.   |
| 4    | 053737   | Screw 8-32 x 3/8  |
| 5    | 028837   | Display Glass   |
| 6    | 027019   | Gasket, Dial Enclosure, Field Replacement   |
| 7    | 015065   | Bracket, Dial Enclosure   |
| 8    | 025824   | Dial Glass, Tank Pump   |
| 9    | C08099   | Silicone Sealant  |
| 10   | 039069   | Nut, Hex Keps, #6-32  |
| 11   |          | Bezel, Dial Enclosure <i>(Must order entire assembly)</i>   |

**NOTE:** *When replacing individual components, such as the dial glass, you must use silicone sealant to properly seal the unit from external moisture.*

**Page intentionally left blank.**

**FINAL ASSEMBLY - COVERS REMOVED**

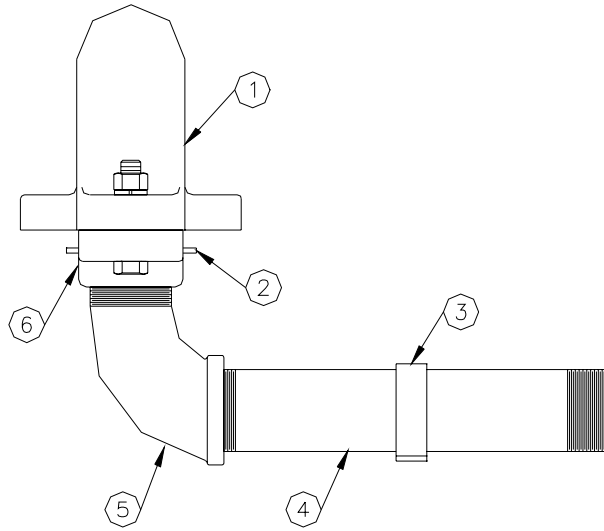


## FINAL ASSEMBLY - COVERS REMOVED

*NOTE: For individual component part numbers, see the parts breakdowns for the applicable assemblies.*

| Item | Part No. | Description                |
|------|----------|----------------------------|
| 1    |          | Discharge Assembly         |
| 2    |          | Meter Assembly             |
| 3    |          | Motor Assembly             |
| 4    |          | Pump Assembly              |
| 5    |          | Reset/Register Assembly    |
| 6    |          | Pulser Assembly (Optional) |

## DISCHARGE ASSEMBLY, STANDARD

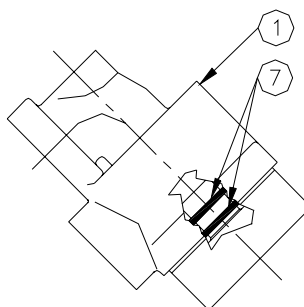
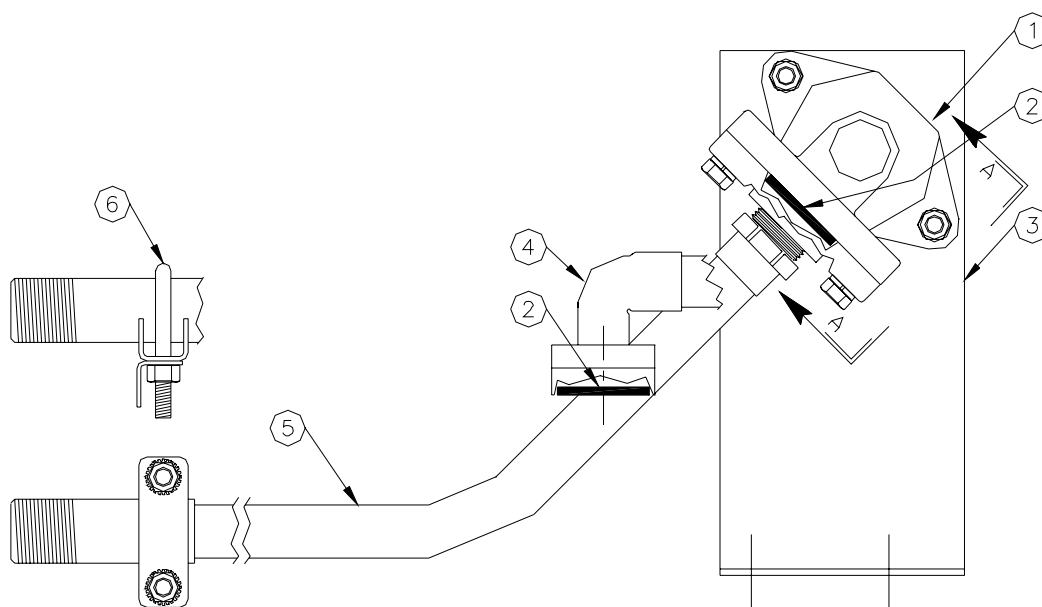


| Item | Part No. | Description                     |
|------|----------|---------------------------------|
| 1    | 003546   | Discharge, 7520 Meter Outlet, F |
| 2    | 027004   | Gasket, ID 1.234, OD 1.502      |
| 3    | 020740   | Clamp, J-Box, Redoxide          |
| 4    | 044606   | Pipe TBE, 1 x 6-3/4             |
| 5    | 024941   | Elbow, Street, 1 x 90°          |
| 6    | 026071   | Meter Flg, 1" NPT w/groove      |

**NOTE:** *Discharge assembly components shown apply to units made after June 1997. Earlier models may use brazed assembly, P/N 040005.*



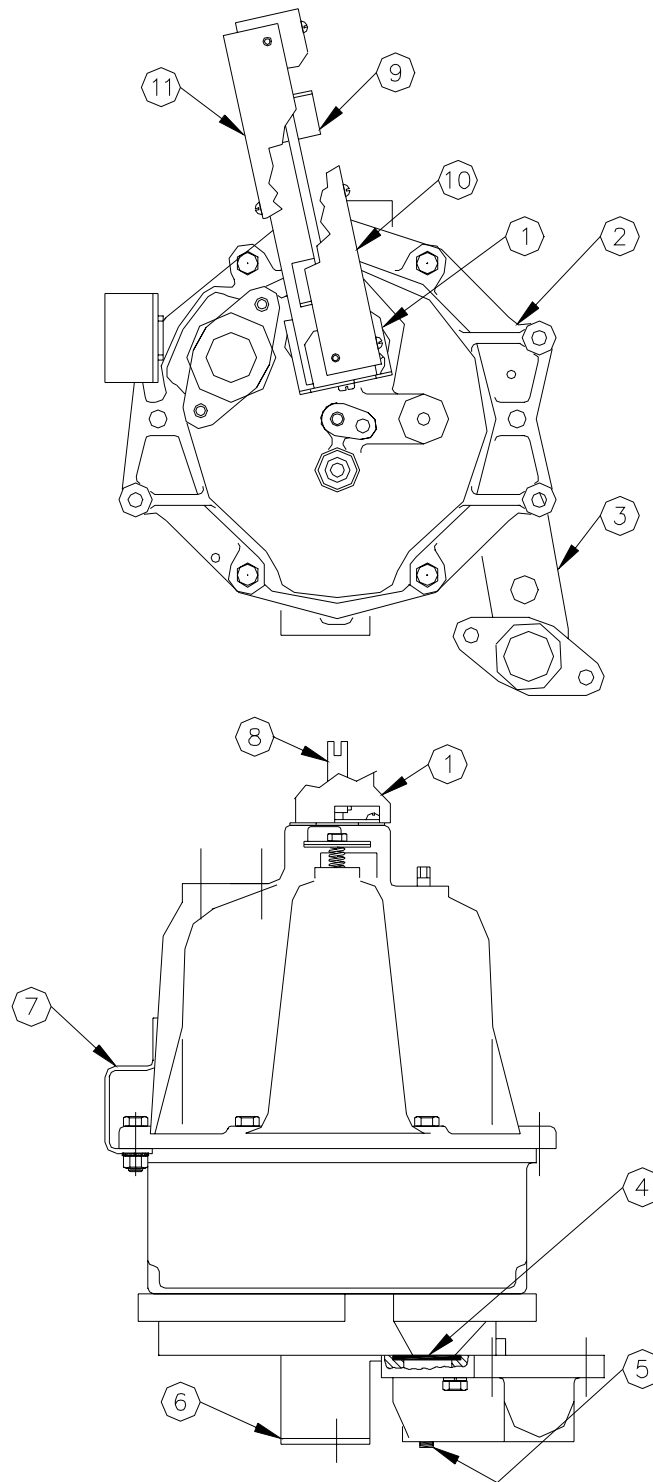
## DISCHARGE ASSEMBLY, VAPOR RECOVERY



DETAIL A-A

| Item | Part No. | Description                    |
|------|----------|--------------------------------|
| 1    | 010124   | Outlet Adapter, Vapor Recovery |
| 2    | 027004   | Gasket                         |
| 3    | 015084   | Support Plt. Weld Splitter VR  |
| 4    | 065650   | Discharge Assembly, Brazed     |
| 5    | 065662   | Tubing Assembly                |
| 6    | 013295   | U-Bolt 1-3/8 ID Walker #35324  |
| 7    | 049013   | O-Ring                         |

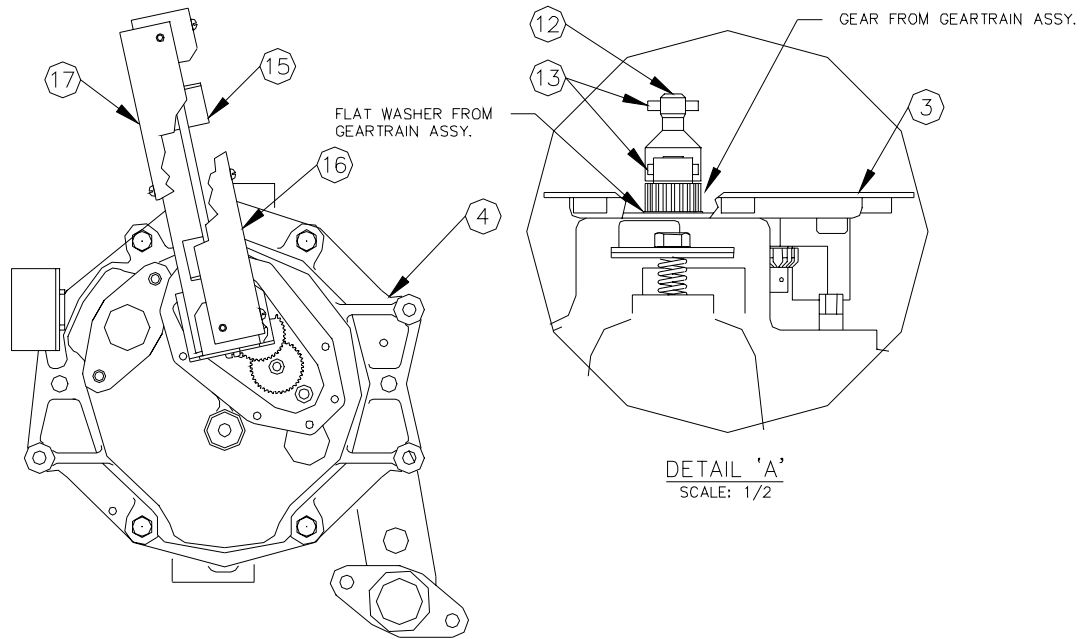
**METER ASSEMBLY, UNITS WITHOUT PULSER OPTION**



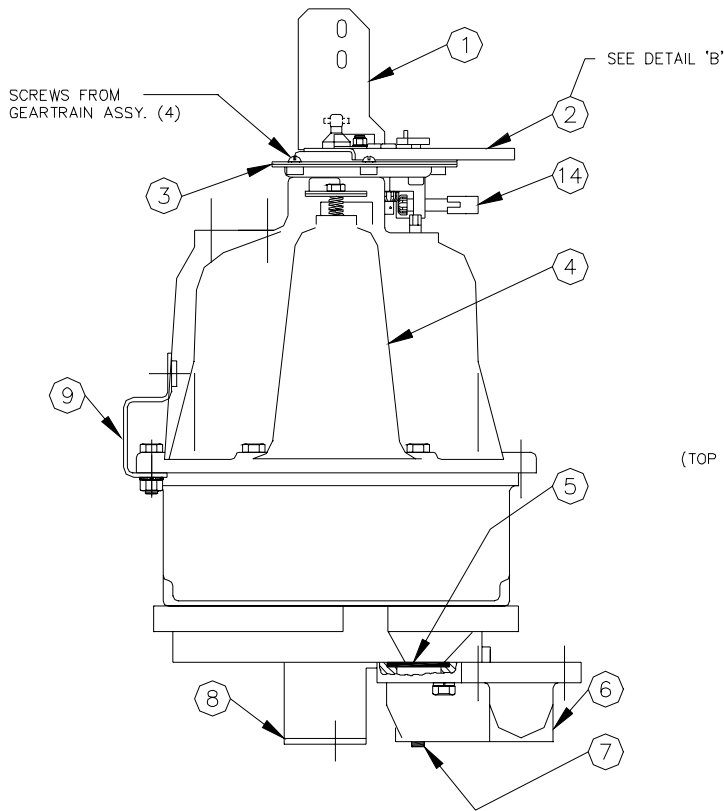
**METER ASSEMBLY, UNITS WITHOUT PULSER OPTION**

| Item | Part No. | Description   |
|------|----------|---|
| 1    | 018600   | Brkt-Gear Train Support 9122  |
| 2    | 035528   | Meter Assy. 4:1 Gal.  |
|      | 035535   | Meter Assy. 2:1 Ltr.<br>(See Meter breakdown for individual meter components) |
| 3    | 021855   | Connector-Meter Disc  |
| 4    | 027004   | Gasket  |
| 5    | 047279   | Plug-Pipe Soc Hd 1/8  |
| 6    | 018597   | Brkt-Meter Support 9120   |
| 7    | 018585   | Brkt-Meter Weld 9120  |
| 8    | 034713   | Link-Drive, Meter-Register, 9120  |
| 9    | 027050   | Gear Train Assembly, Meter-Register (Parts not sold separately.)              |
| 10   | 022809   | Cover, Gear Train Rear  |
| 11   | 022808   | Cover, Gear Train Front   |

### METER ASSEMBLY, UNITS WITH PULSER



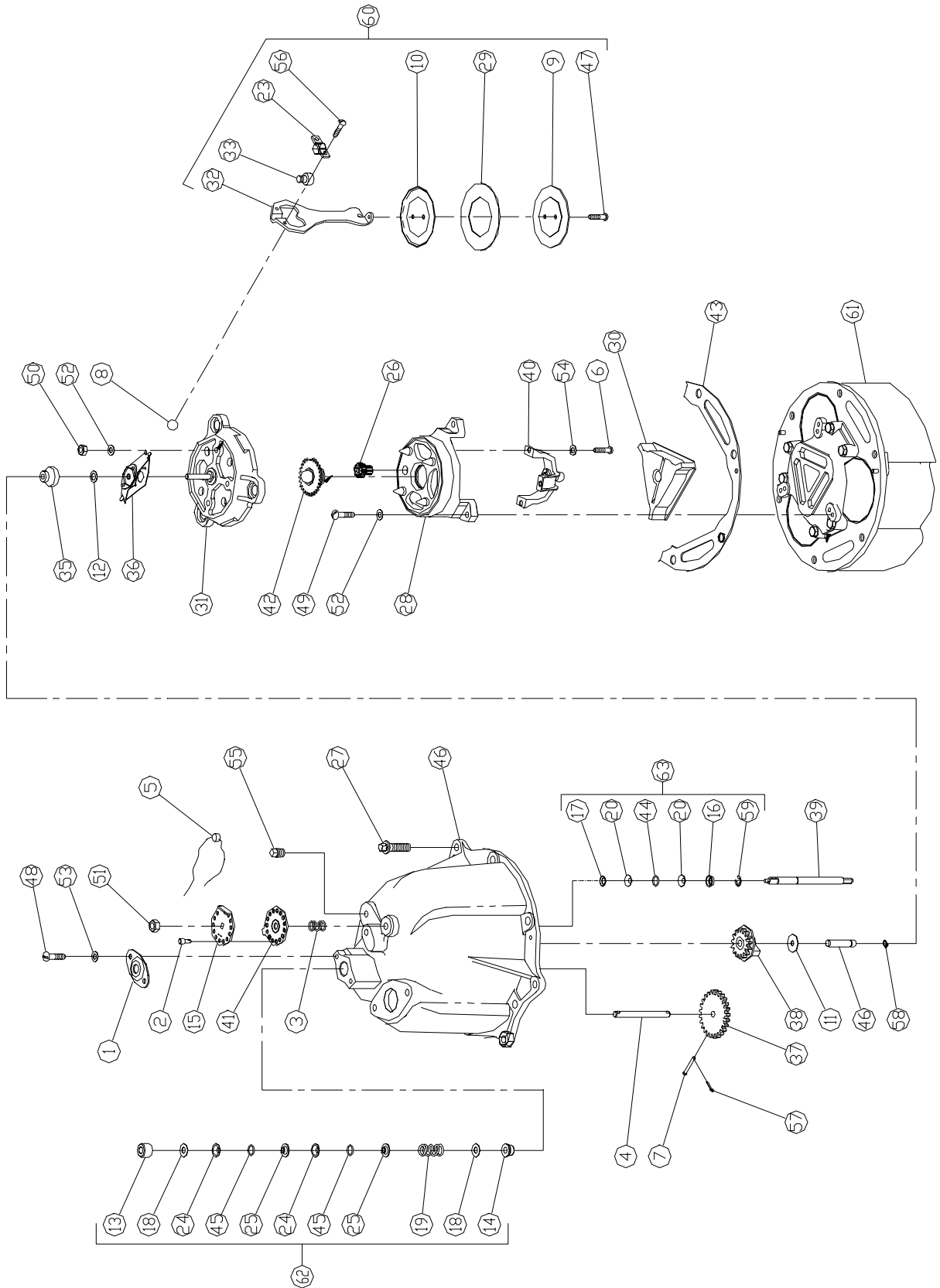
DETAIL 'A'  
SCALE: 1/2



DETAIL 'B'  
SCALE: 1/2

**METER ASSEMBLY, UNITS WITH PULSER**

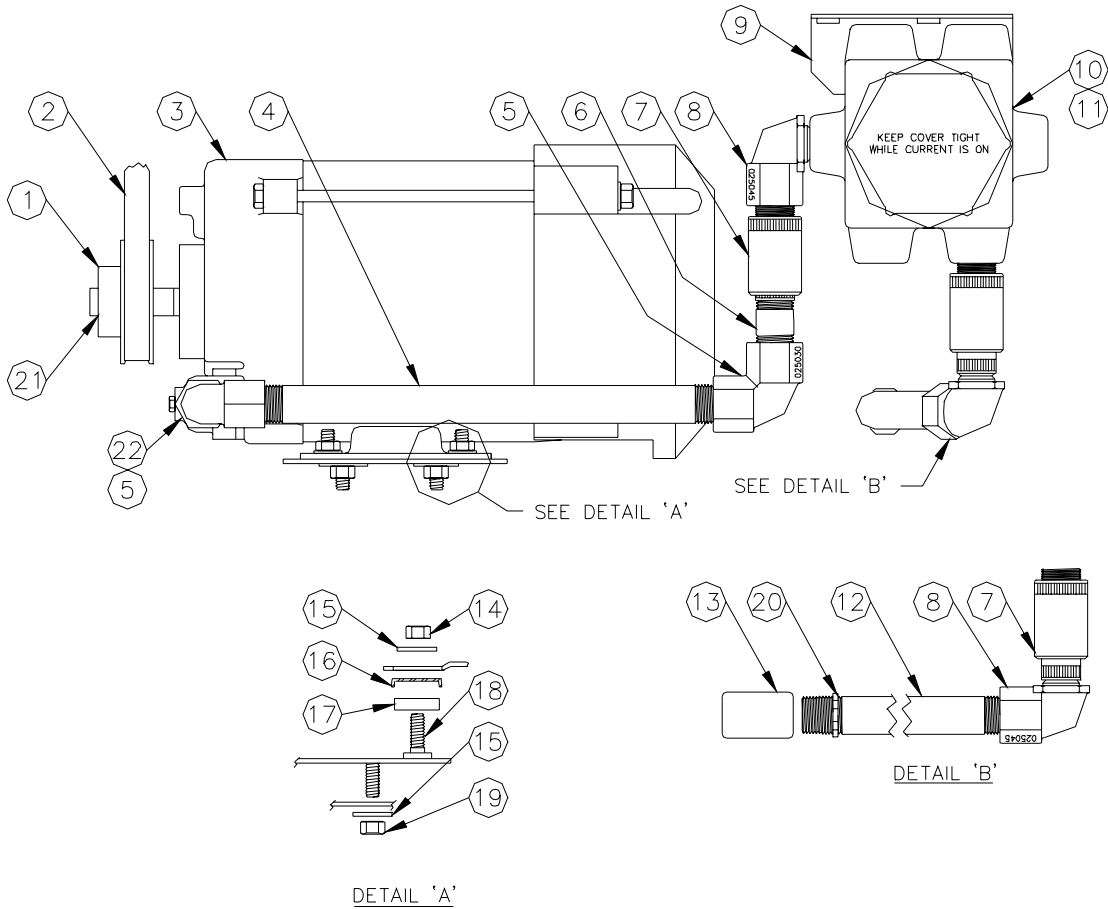
| Item | Part No. | Description  |
|------|----------|--|
| 1    | 018600   | Brkt-Meter Weld 9120 Series  |
| 2    | 022431   | Cover-Drill Drive  |
| 3    | 027408   | Gear Train Assy. (Bottom Half W/All Hardware. Parts not sold separately.)      |
| 4    | 035528   | Meter Assy, 4:1 Gallon   |
|      | 035535   | Meter Assy, 2:1 Liter<br>(See Meter breakdown for individual meter components) |
| 5    | 027004   | Gasket   |
| 6    | 021855   | Connector-Meter Disc   |
| 7    | 047279   | Plug-Pipe Soc Hd 1/8   |
| 8    | 018597   | Brkt-Meter Support 9120  |
| 9    | 018585   | Brkt-Meter Weld 9120   |
| 10   | 053000   | Scr 10-32 x 3/8 Lg. Rd. Hd. Slit. Pl.  |
| 11   | Z09273   | Nut-Hex Keps #10-32 Pl   |
| 12   | 034709   | Link-Computer Drive (F) 9120   |
| 13   | 042130   | Pin-Groove 1/8 x 5/8 Type 5, Pltd or Drive-lock                                |
| 14   | 034715   | Link-Drive Pulser  |
| 15   | 027050   | Gear Train Assembly, Meter & Register (Parts not sold separately.)             |
| 16   | 022809   | Cover, Gear Train Rear, 9120   |
| 17   | 022808   | Cover, Gear Train Front, 9120  |
| 18   | 054827   | Shaft-Drive Pulser   |



**METER BREAKDOWN - EXPLODED VIEW**

| Item | Part No. | Description                         | Item | Part No. | Description  |
|------|----------|-------------------------------------|------|----------|--|
| 1    | S00466   | Packing Gland Plate                 | 38   | S00499   | Counter Drive Gear Complete - Gal  |
| 2    | S00467   | Seal Pin                            |      | S00114   | Counter Drive Gear Complete - Ltr  |
| 3    | S00469   | Compensator Screw Spring            | 39   | S00497   | Compensator Shaft  |
| 4    | S00473   | Drive Shaft                         | 40   | S00500   | Bracket & Pin Assembly   |
| 5    | 069080   | Seal & Seal Wire                    | 41   | S00468   | Index Plate  |
| 6    | S00475   | Special Screw                       | 42   | S00479   | Pivot & Ball Assembly  |
| 7    | S00476   | Drive Shaft Pin                     | 43   | S00470   | Meter Body Gasket  |
| 8    | S00477   | 1/2" Ball                           | 44   | S00471   | "O" Ring (.362 Dia.)   |
| 9    | S00480   | Plunger Cup Support                 | 45   | S00472   | "O" Ring (.487 Dia)  |
| 10   | S00481   | Plunger Disc                        | 46   | S00486   | Meter Cover w/ Center Gear Post, Index Plate, Pipe Plug & Retaining Ring |
| 11   | S00482   | Washer                              | 47   | S00509   | #10-32 x 3/8 Lg. Rd. Hd. Mach. Screw                                     |
| 12   | S00483   | Washer                              | 48   | S00507   | #12-24 x 1/2 Lg. Rd. Hd. Mach. Screw                                     |
| 13   | S00484   | Upper Bearing Assembly              | 49   | S00508   | 1/4-20 x 3/4 Lg. Rd. Hd. Mach. Screw                                     |
| 14   | S00485   | Bearing Assembly                    | 50   | S00511   | 1/4-20 Hex Nut   |
| 15   | S00487   | Compensator Index Disc              | 51   | S00510   | 5/16-18 Hex Nut  |
| 16   | S00488   | Seal Half                           | 52   | S00520   | 1/4 Lockwasher   |
| 17   | S00489   | Seal Wedge                          | 53   | S00513   | #1212 Lockwasher   |
| 18   | S00490   | Washer                              | 54   | S00514   | #1114 Lockwasher   |
| 19   | S00492   | Packing Spring                      | 55   | S00515   | 1/8 Sq. Hd. Pipe Plug  |
| 20   | S00493   | Seal                                | 56   | S00516   | #10-32 x 3/8 Lg. Rd. Hd. Sems Fastener                                   |
| 23   | S00494   | Bearing Retainer                    | 57   | S00517   | 1/16 x 1/4 Lg. Cotter Pin  |
| 24   | S00495   | Seal (black)                        | 58   | S00518   | Truarc Retaining Ring  |
| 25   | S00491   | Seal Retaining Ring                 | 59   | S00519   | Truarc "E" Retaining Ring  |
| 26   | S00478   | Compensator Pinion                  | 60   | S00521   | Plunger Assy. w/ Bearing Retainer, Bearing Seat & Sems Fastener          |
| 27   | S00512   | Screw                               | 61   | S00522   | Body & Seat Assembly w/ Pins   |
| 28   | S00498   | Main Pivot Bracket Assembly w/ Pins | 62   | S00523   | Meter Drive Shaft Kit  |
| 29   | S00032   | Plunger Cup Kit (Set of 3 Cups)     | 63   | S00130   | Shaft-Seal Kit   |
| 30   | S00501   | Valve                               |      |          |  |
| 31   | S00502   | Wobble Plate w/ Slack Roller Post   |      |          |  |
| 32   | S00503   | Connector                           |      |          |  |
| 33   | S00504   | Bearing Seat                        |      |          |  |
| 35   | S00505   | Slack Roller Assembly               |      |          |  |
| 36   | S00506   | Slack Spring Assembly               |      |          |  |
| 37   | S00496   | Drive Shaft Gear - Gal              |      |          |  |
|      | S00115   | Drive Shaft Gear - Ltr              |      |          |  |

**MOTOR ASSEMBLY**



| Item | Part No. | Description                                 |
|------|----------|---|
| 1    | 047005   | Pulley, Maurey 2240, 5/8 bore 9122, 9124    |
|      | 047006   | Pulley, Maurey 2275, 5/8 bore 9123, 9125    |
| 2    | 012128   | V-Belt 4L270                                |
| 3    | F37723   | Motor, 1/2HP 115/230V/60Hz 56FR, 9122, 9124 |
|      | F37707   | Motor, 3/4HP 115/230V/60HZ 9123, 9125       |
|      | 037673   | Motor, 3/4HP 240V/50C 56FR, 9123, 9125      |
| 4    | 021517   | Conduit 1/2 x 11                            |
| 5    | 025030   | Elbow-Conduit 1/2 x 90 F-F Mch              |
| 6    | 021827   | Conduit 1/2 x 2-11/32 9122                  |
| 7    | 066400   | 1/2" UNY Explosion-Proof Conduit Union      |

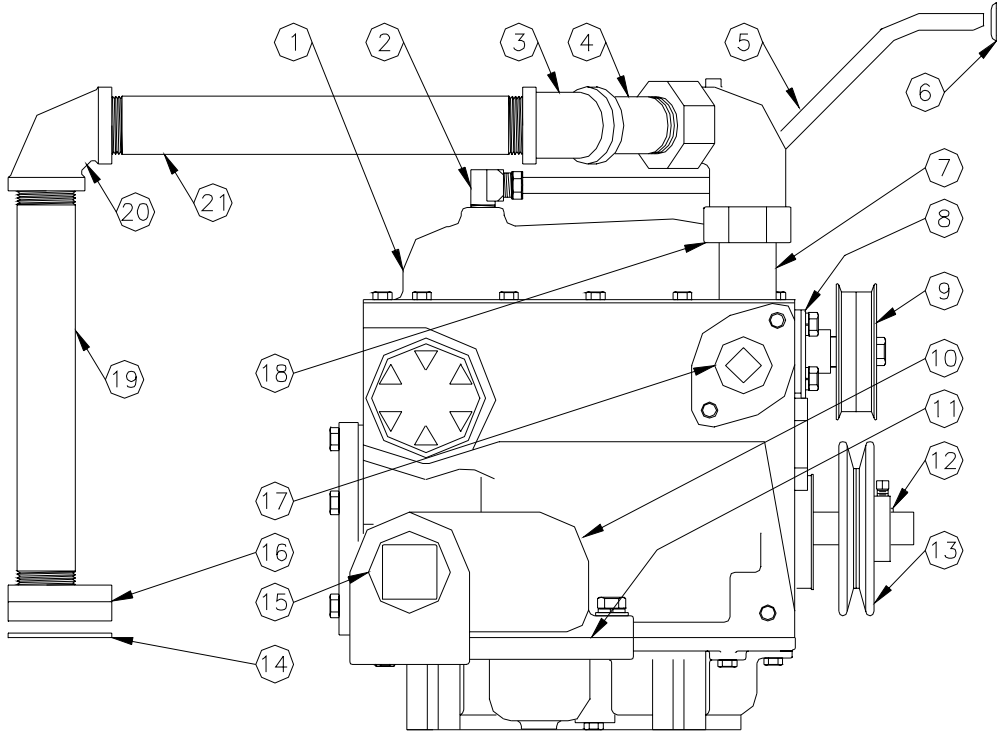
| Item | Part No. | Description                    |
|------|----------|--------------------------------|
| 8    | 025045   | Elbow, Conduit, 1/2 x 90°      |
| 9    | 018599   | Bracket, J-Box Weld            |
| 10   | 003344   | J Box Mach 7 Opening           |
| 11   | 022140   | J-Box Assembly                 |
| 12   | 020010   | Conduit, Inlet, 9120 Series    |
| 13   | 021986   | Coupling- 1/2" Conduit         |
| 14   | 038920   | Nut, Lock 5/16-18 Hex          |
| 15   | 068080   | Washer-5/16 pltd.              |
| 16   | 067735   | Washer-Cup                     |
| 17   | 037885   | Mount-Rubber                   |
| 18   | 046046   | Motor Plate                    |
| 19   | 038605   | Keys Lock Nut, 5/16            |
| 20   | 039130   | Nut - Conduit Lock PN3-66 1/2" |
| 21   | 031315   | Key                            |
| 22   | 021337   | Conduit 1/2 x 2 9123           |



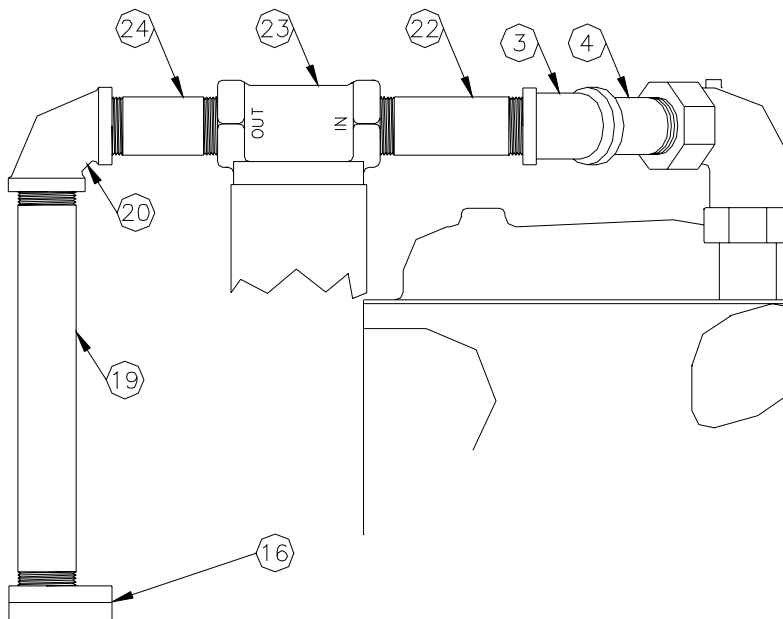
**Page intentionally left blank.**

## PUMP ASSEMBLY

### Without Internal Filter Option



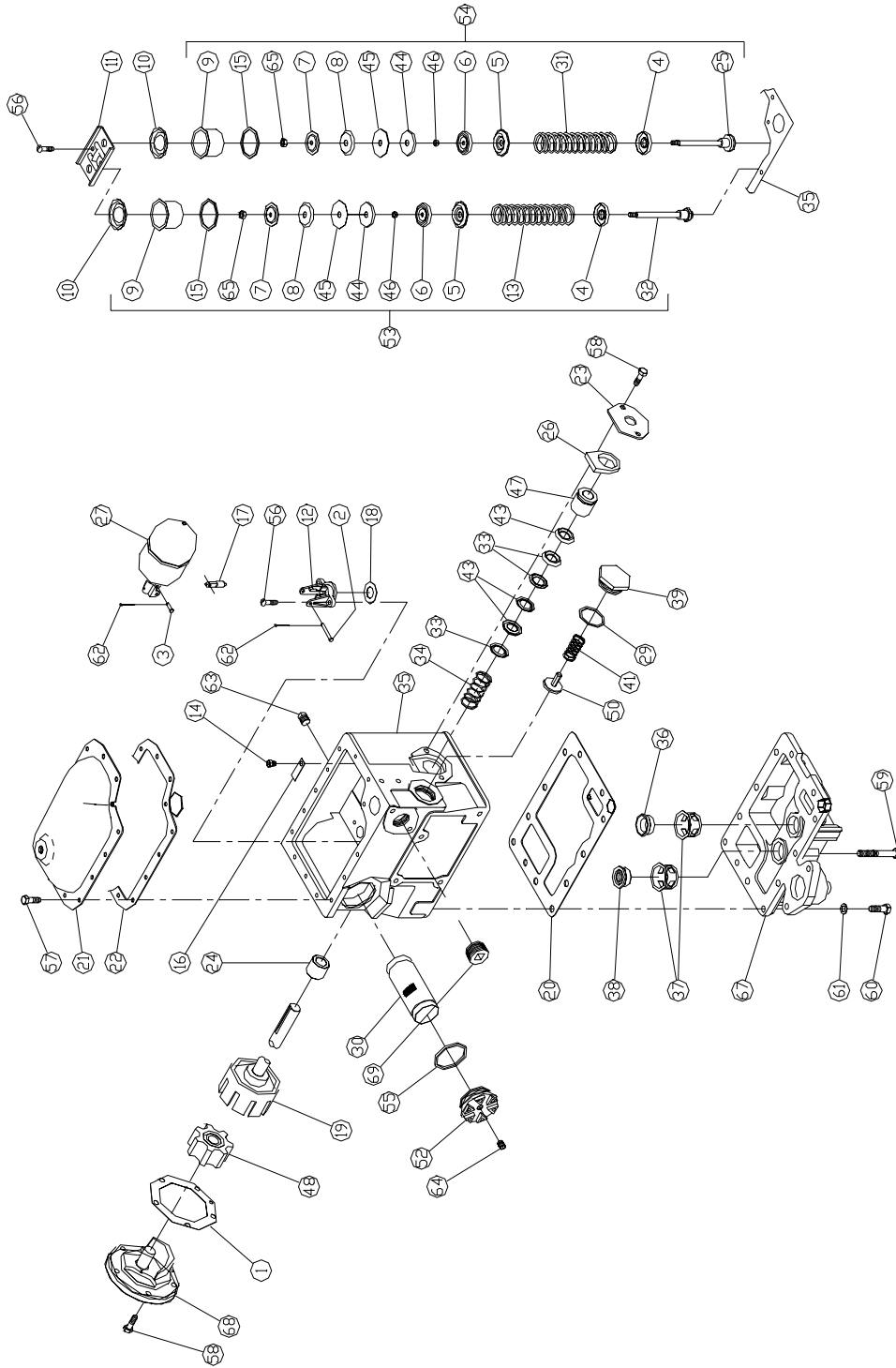
### With Internal Filter Option



## PUMP ASSEMBLY

| Item | Part No. | Description  |
|------|----------|--|
| 1    | 048393   | Pumping Unit 9122, 9124  |
|      | 048392   | Pumping Unit 9123, 9125<br>(See <b>Pumping Unit</b> breakdown for individual components) |
| 2    | 026044   | Fitting 3/8CT Elb. Inv. Fl.  |
| 3    | 024970   | Elbow, 1 x 45° 150# Blk Mall   |
| 4    | 045235   | Pipe TOE, 1 x 4  |
| 5    | 063665   | Vent Tube Assy. 9120   |
| 6    | 058021   | Grommet  |
| 7    | 045218   | Pipe Toe 1 x 2-1/2   |
| 8    | 047007   | Idler Arm  |
| 9    | 047009   | Pulley-Idler   |
| 10   | 003089   | Pump Inlet Fitting 9120  |
| 11   | 027001   | Pump Inlet Gasket  |
| 12   | 031315   | Key  |
| 13   | 047598   | Pulley-Pump 4" OD x 3/4 Bore 9122, 9124  |
|      | 047597   | Pulley-Pump 3.5" OD x 3/4 Bore 9123, 9125  |
| 14   | 027004   | Gasket   |
| 15   | 047243   | Plug - 1-1/2-11-1/2 NPT  |
| 16   | 026075   | Mtr Flg, 1" NPT  |
| 17   | 047305   | Plug Pipe Sq. Hd 1"  |
| 18   | 024910   | Elbow, Dresser 1 x 90°   |
|      | *054207  | Dresser Seal Ring  |
| 19   | 044609   | Pipe TBE, 1 x 10-1/4   |
| 20   | 024895   | Elbow, 1 x 90°   |
| 21   | 045327   | Pipe TBE, 1 x 10-3/4   |
| 22   | 044590   | Pipe TBE, 1 x 6  |
| 23   | 003044   | Filter Adapter, 9122, 9124   |
|      | 003087   | Filter Adapter, 9123, 9125   |
|      |          | <b>NOTE: See 9120 Series Kits and Accessories section for available filter elements.</b> |
| 24   | 044515   | Pipe TBE, 1 x 2-1/2  |

## PUMPING UNIT BREAKDOWN

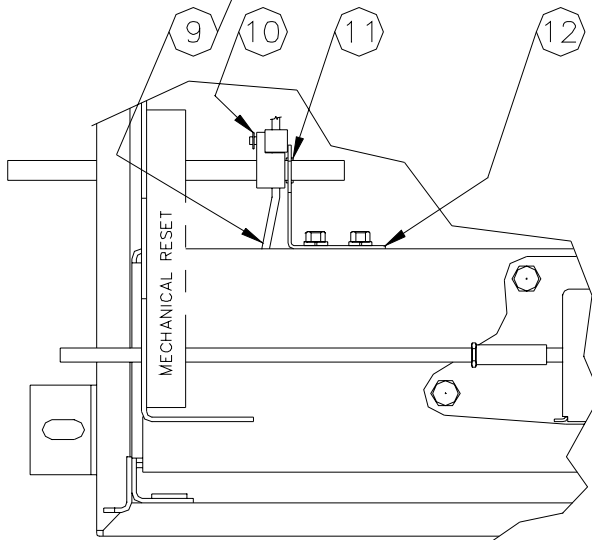
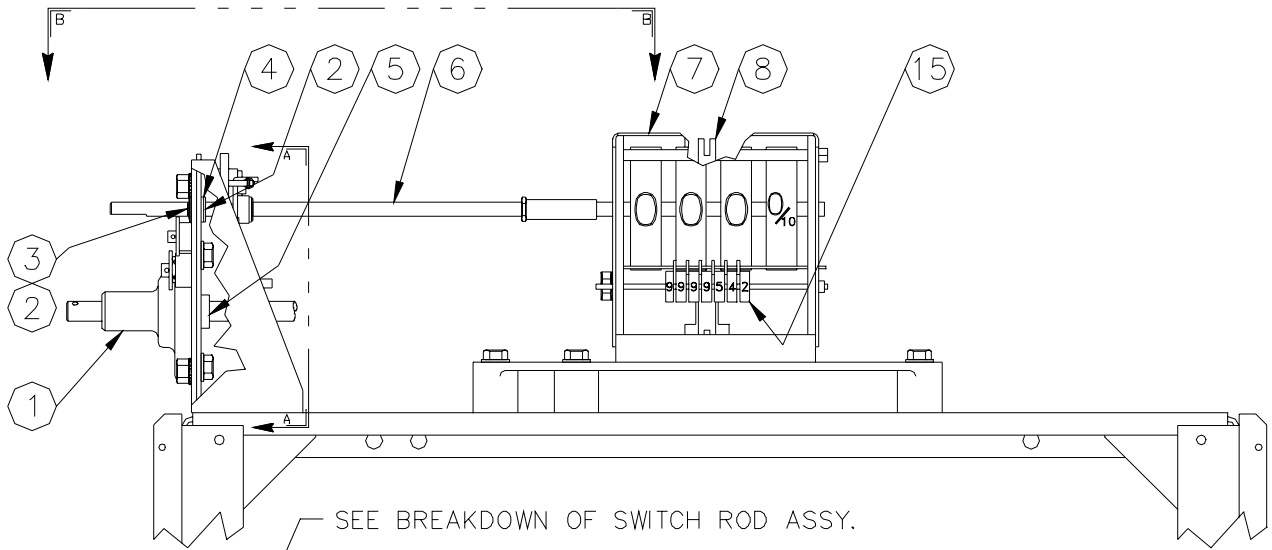


## PUMPING UNIT BREAKDOWN

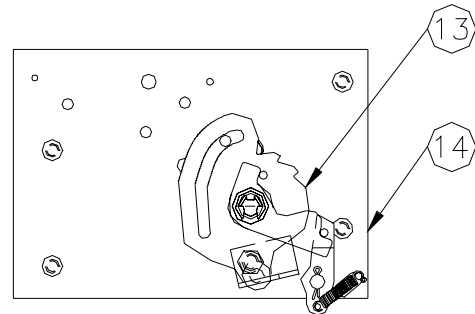
| Item | Part No. | Description   | Item | Part No. | Description   |
|------|----------|---|------|----------|---|
| 1    | S00117   | Gasket  | 53   | S00125   | By-pass Valve Assembly (34# to 35-1/2# spring, 9122/9124)                       |
| 2    | S00456   | Float Lever Pin   |      | S00126   | By-pass Valve Assembly (44-1/2# spring, 9123/9125)                              |
| 3    | S00066   | Valve Pin   | 54   | S00127   | Regulating Valve Assembly   |
| 4    | S00067   | Guide Plate   | 55   | 026768   | Gasket  |
| 5    | S00068   | Spring Plate  | 56   | S00451   | 1/4-20 x 7/8 Lg. Rd. Hd. Mach Screw   |
| 6    | S00069   | Plunger Head  | 57   | S00452   | 1/4-20 x 1/2 Lg. Hex Hd. Cap Screw  |
| 7    | S00072   | Plunger Plate   | 58   | S00453   | 5/16-18 x 7/8 Lg. Hex. Hd. Cap Screw  |
| 8    | S00073   | Plunger Follower  | 59   | S00454   | 3/8-16 x 2-3/4 Lg. Hex. Hd. Cap Screw   |
| 9    | S00074   | Valve Cylinder  | 60   | S00455   | 3/8-16 x 1-1/8 Lg. Hex. Hd. Cap Screw   |
| 10   | S00075   | Cylinder Head   | 61   | S00458   | 3/8 Lockwasher  |
| 11   | S00076   | Clamp Plate   | 62   | S00457   | 1/16 x 1/2 Lg. Cotter Pin   |
| 12   | S00077   | Float Valve Body  | 63   | S00459   | 1/4 Sq. Hd. Pipe Plug   |
| 13   | S00078   | By-Pass Valve Spring (#34 to 35-1/2# spring, 9122/9124)         | 64   | S00460   | 1/4 Countersunk Pipe Plug   |
|      | S00079   | By-Pass Valve Spring (44-1/2# Spring, 9123/9125)                | 65   | S00461   | 1/4 - 28 Hex. Nut   |
| 14   | S00080   | Vent Screw  | 67   | S00462   | Lower Pump Head w/Valve Seat Guides, Regulating Valve Seat & By-pass Valve Seat |
| 15   | S00062   | Valve Cylinder Gasket   | 68   | S00057   | Rotary Pump Head Assembly   |
| 16   | S00081   | Vent Screw Guard  | 69   | S00465   | 1" Pipe Plug (Not used on this model)   |
| 17   | S00082   | Float Valve Needle  |      |          |   |
| 18   | S00083   | Float Valve Gasket  |      |          |   |
| 19   | S00128   | Pump Rotor Shaft Assembly                                       |      |          |   |
| 20   | S00119   | Bottom Head Gasket  |      |          |   |
| 21   | S00084   | Separator Cover   |      |          |   |
| 22   | S00120   | Cover Gasket  |      |          |   |
| 23   | S00085   | Retainer  |      |          |   |
| 24   | S00121   | Bearing   |      |          |   |
| 25   | S00086   | Regulating Poppet Assy  |      |          |   |
| 26   | S00124   | Oil Well Felt   |      |          |   |
| 27   | S00061   | Float Assembly  |      |          |   |
| 29   | S00718   | Gasket  |      |          |   |
| 30   | 063312   | Suction Screen (Gasoline, 100 mesh)                             |      |          |   |
|      | 063313   | Suction Screen (Diesel, 40 mesh)                                |      |          |   |
| 31   | S00088   | Regulating Valve Spring   |      |          |   |
| 32   | S00089   | By-pass Valve Poppet  |      |          |   |
| 33   | S00056   | Packing Gland   |      |          |   |
| 34   | S00090   | Packing Spring  |      |          |   |
| 35   | S00091   | Rotary Pump & Separator Body w/Gasket, Bearing, Screws & Spring |      |          |   |
| 36   | S00092   | Regulating Valve Seat   |      |          |   |
| 37   | S00093   | Valve Seat Guide  |      |          |   |
| 38   | S00094   | By-pass Valve Seat  |      |          |   |
| 39   | S00717   | Check Valve Cap   |      |          |   |
| 41   | S00447   | Poppet Spring   |      |          |   |
| 43   | S00116   | "V" Packing   |      |          |   |
| 44   | S00095   | Plunger Guide   |      |          |   |
| 45   | S00096   | Plunger Disc  |      |          |   |
| 46   | S00097   | Plunger Spacer  |      |          |   |
| 47   | S00122   | Drive Shaft Bearing   |      |          |   |
| 48   | S00129   | Rotary Pump Idler   |      |          |   |
| 50   | S00098   | Poppet Disc. & Relief Valve Assy.                               |      |          |   |
| 52   | 063261   | Suction Strainer Cap  |      |          |   |



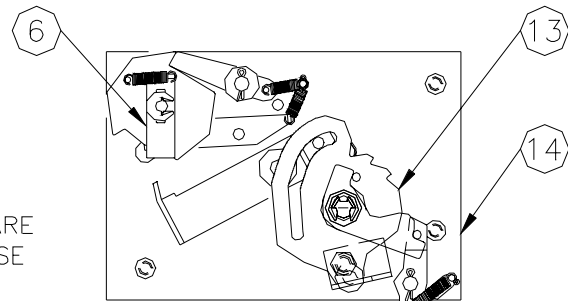
## RESET/REGISTER ASSEMBLY



VIEW B-B



(9124/9125)



(9122/9123)

VIEW A-A

NOTES:

1. INSTALL ITEMS 4 & 5 BEFORE TIGHTENING HARDWARE  
LUBRICATE INSIDE OF BUSHING WITH MULTI-PURPOSE  
GREASE BEFORE INSTALLING SHAFTS
2. INSTALL ITEM 2 BEHIND ITEM 3 IF NECESSARY,  
TO LIMIT END PLAY OF CAM & GATE ASSY ITEM 6  
BOWED RETAINING RING ITEM 3 MUST BE COMPRESSED

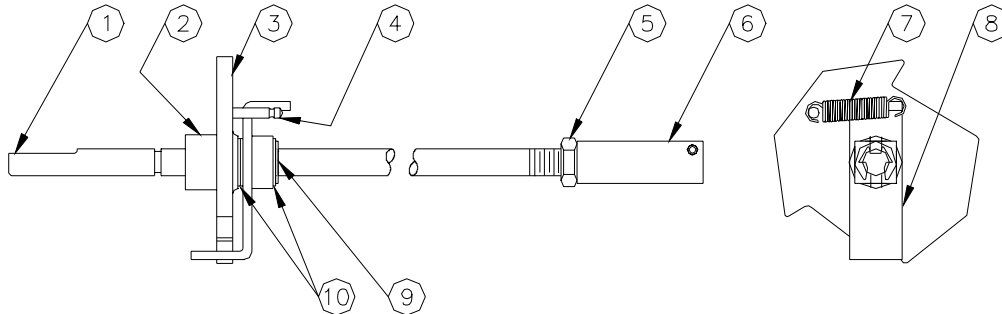
**RESET/REGISTER ASSEMBLY**

| Item | Part No. | Description  |
|------|----------|--|
| 1    | 003183   | Bearing-Start Shaft 9120   |
| 2    | 067240   | Washer, Brass, 21/64 x 9/16 x 1/32   |
| 3    | 049331   | Ring-Truarc 5139-31MF  |
| 4    | 017126   | Bushing  |
| 5    | 017261   | Bush, Operating Shaft  |
| 6    | 017516   | Reset Shaft Assembly, 9122/9123 (w/interlocking Cam and Gate)  |
|      | 017525   | Reset Shaft Assembly, 9124/9125 (w/o interlocking Cam and Gate)  |
| 7    | 022805   | Drive & Register Assembly, 9124/9125 Gallon  |
|      | *045801  | Register and Plate Assembly  |
|      | 022804   | Drive & Register Assembly, 9124/9125 Liter   |
|      | *045801  | Register and Plate Assembly  |
|      | 022815   | Drive & Register Assembly 9122/9123, Gallon  |
|      | *048565  | Register Assembly  |
|      | 022806   | Drive & Register Assembly 9122/9123, Liter   |
|      | *048565  | Register Assembly  |
| 8    | 034714   | Link-Drive Register 9120   |
| 9    | 050628   | Switch Rod Assembly ( <i>See <b>Switch Rod Assembly</b> breakdown for individual components</i> )                          |
| 10   | 049406   | Ring, Retaining  |
| 11   | 011953   | Bearing-Nyliner 7/16   |
| 12   | 018596   | Brkt-Support Start Shaft 9120  |
| 13   | 017520   | Cam and Operating Shaft Assy<br>( <i>See <b>Cam and Operating Shaft Assembly</b> breakdown for individual components</i> ) |
| 14   | 037873   | Reset Mounting Plate Assy, 9124/9125 ( <i>See breakdown for individual components</i> )                                    |
|      | 037872   | Reset Mounting Plate Assy, 9122/9123 ( <i>See breakdown for individual components</i> )                                    |
| 15   | S00173   | Totalizer Assembly   |

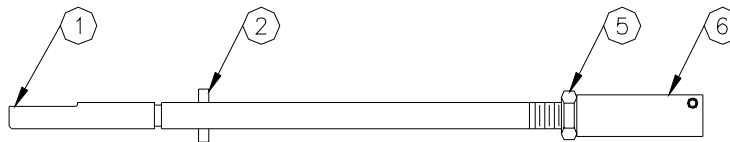


## RESET SHAFT ASSEMBLY

With Interlocking Cam and Gate, 9122/9123



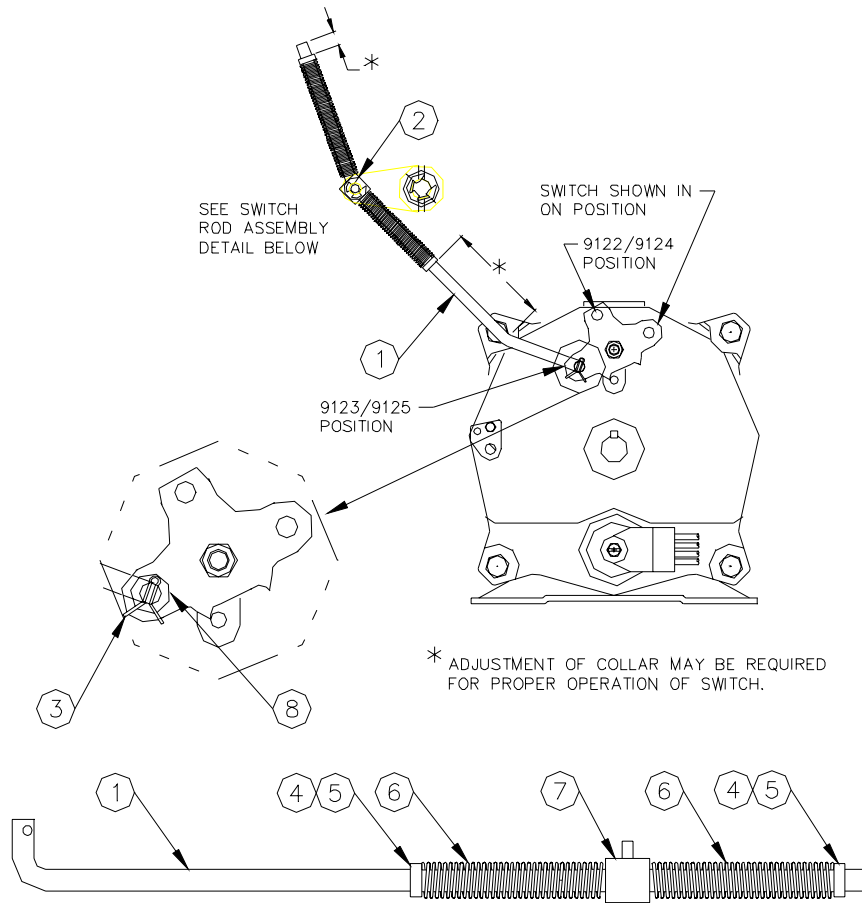
Without Interlocking Cam and Gate, 9124/9125



*Lubricate with multi-purpose grease before assembly.*

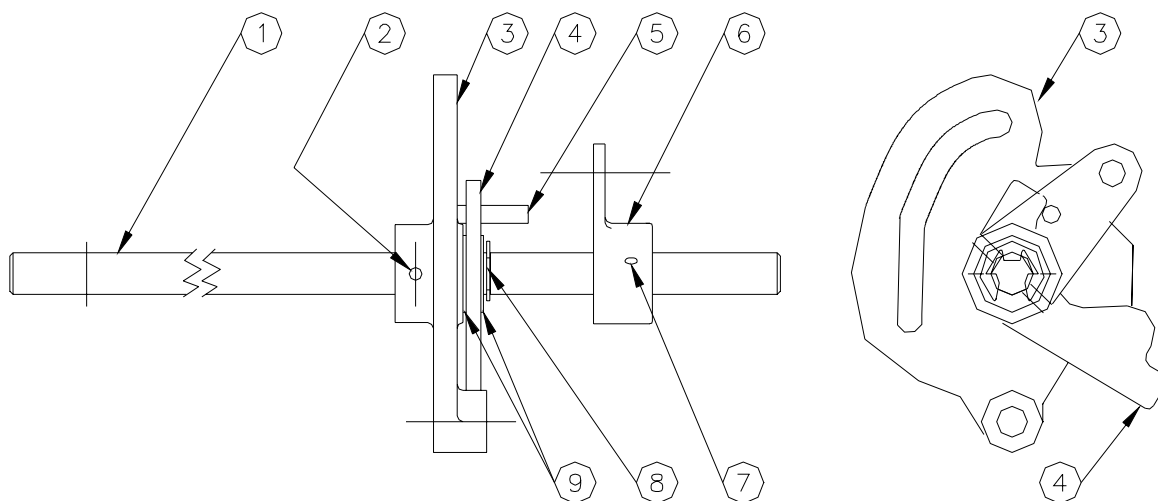
| Item | Part No. | Description                        |
|------|----------|------------------------------------|
| 1    | 054562   | Shaft, Setback Reset Interlock     |
| 2    | 042596   | Pin, Driv-Lok 1/8 x 3/4            |
| 3    | 003366   | Cam                                |
| 4    | 042470   | Pin, Driv-Lok 1/8 x 5/8            |
| 5    | 038725   | Nut, Hex Jam, 5/16-18              |
| 6    | 056710   | Sleeve, SB AS                      |
| 7    | 057790   | Spring Pawl                        |
| 8    | 027371   | Gate, Reset Assembly               |
| 9    | 049491   | SS Retaining Ring                  |
| 10   | 067240   | Washer, Brass, 21/64 x 9/16 x 1/32 |

## SWITCH ROD ASSEMBLY BREAKDOWN



| Item | Part No. | Description                     |
|------|----------|---------------------------------|
| 1    | 050670   | Switch Rod Assembly 9120        |
| 2    | 049406   | Ring-Ret 5133-25-ZF             |
| 3    | 042415   | Pin, Cotter, 1/16 x 5/8         |
| 4    | 053140   | Scr-set, soc hd, 10-32x3/16 Cup |
| 5    | 021145   | Collar                          |
| 6    | 057160   | Spring                          |
| 7    | 063707   | Stud-Swivel                     |
| 8    | 068005   | Washer, 1/4 Pltd                |

## CAM AND OPERATING SHAFT ASSEMBLY

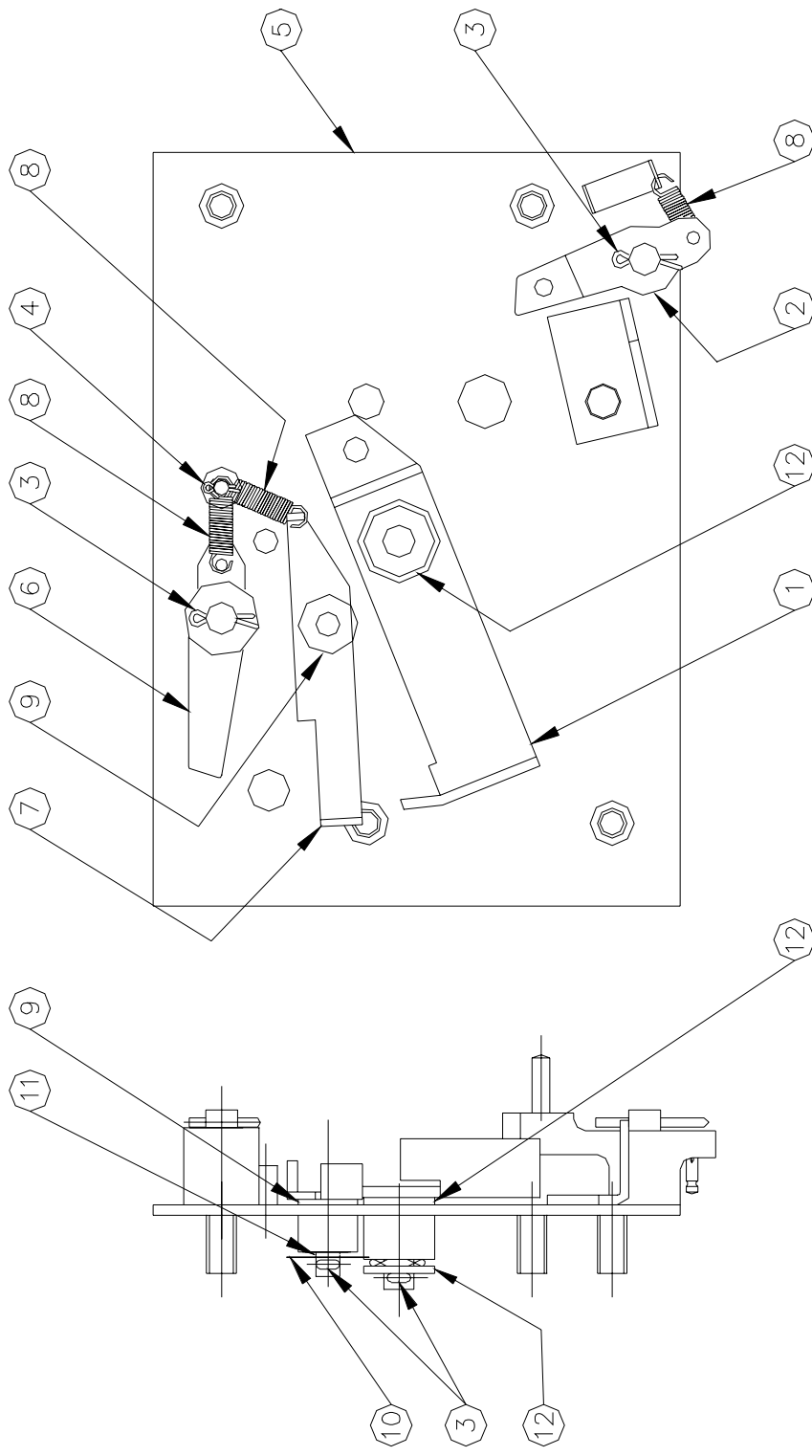


NOTE: LUBRICATE BEARING SURFACES OF ITEMS  
1 & 4 WITH MULTI-PURPOSE GREASE  
BEFORE ASSEMBLY.

| Item | Part No. | Description                  |
|------|----------|------------------------------|
| 1    | 054556   | Shaft, Operating             |
| 2    | 042656   | Groov-Pin, 1/8 x 1           |
| 3    | 003364   | Cam, Operating               |
| 4    | 003198   | Blocker, Pawl                |
| 5    | 042465   | Pin, Driv-Lok, 3/16 x 1      |
| 6    | 003045   | Arm-Switch                   |
| 7    | 042822   | Pin, Driv-Lok, 1/8 x 1       |
| 8    | 049426   | Ring, 7/16 Retaining         |
| 9    | 067495   | Washer Br 7/16 x 13/16 x 1/3 |

**Page intentionally left blank.**

**RESET MOUNTING PLATE ASSEMBLY**



- NOTES:
1. LUBRICATE PIVOT PINS FOR ITEMS 1,2,6 & 7 WITH MULTI-PURPOSE GREASE BEFORE ASSY
  2. IF NEEDED USE 2 WAVE WASHERS ITEM 12 TO LIMIT PLAY OF ITEM 1 LATCH BAR
  3. PAWLS MUST NOT BIND

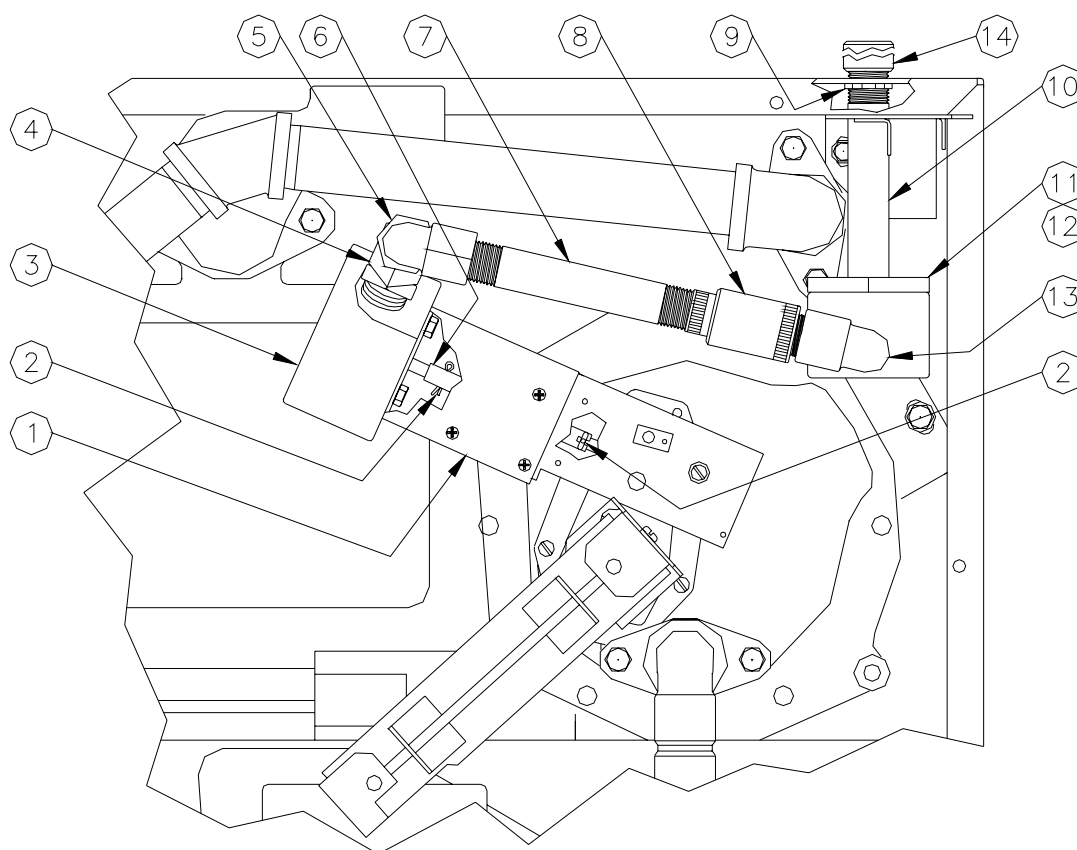
## RESET MOUNTING PLATE ASSEMBLY

### 9122/9123 Parts For Units With Interlock

| Item | Part No. | Description                          |
|------|----------|--------------------------------------|
| 1    | 033416   | Latch Bar Assy.                      |
| 2    | 041996   | Pawl-Oper. Cam Assy.                 |
| 3    | 042355   | Pin-Cotter 3/32 x 3/4 Chisel P       |
| 4    | 042400   | Pin-Cotter 1/16 x 3/8 Chisel P       |
| 5    | 046999   | Interlock Reset Mounting Plate Assy. |
| 6    | 048592   | Reset Cam Assy                       |
| 7    | 048593   | Reset Block-Pawl Assy.               |
| 8    | 057164   | Spring-Interlock-54                  |
| 9    | 067285   | Washer Br .282 x 5/8 x .040          |
| 10   | 068037   | Washer SS .260 x .500 x .010         |
| 11   | 067164   | Washer-Spring                        |
| 12   | 067495   | Washer Br 7/16 x 13/16 x 1/3         |

### 9124/9125 Parts For Units Without Interlock

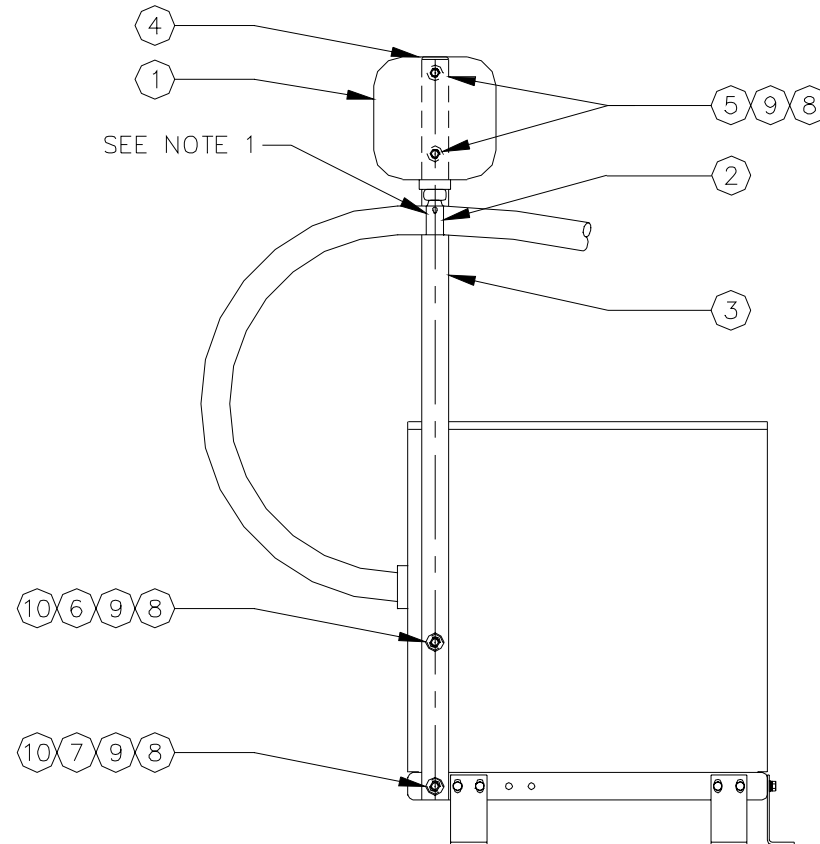
| Item | Part No. | Description                          |
|------|----------|--------------------------------------|
| 2    | 041996   | Pawl-Oper. Cam Assy.                 |
| 3    | 042355   | Pin-Cotter 3/32 x 3/4 Chisel P       |
| 5    | 046999   | Interlock Reset Mounting Plate Assy. |
| 8    | 057164   | Spring-Interlock-54                  |

**PULSER ASSEMBLY, 10:1, 100:1 (OPTIONAL)**

**NOTE:** See **Meter Assembly** for additional requirements for units with a pulser.

| Item | Part No. | Description                            |
|------|----------|--|
| 1    | 015451   | Brkt-Pulser 9120                       |
| 2    | 042290   | Pin, Cotter, 3/16 x 1/2                |
| 3    | 021788   | Pulser, 10:1 VR769780-010              |
|      | 047648   | Pulser, 100:1 VR767181-332             |
| 4    | 025015   | Elbow - Conduit 1/2 x 45 M/F           |
| 5    | 025045   | Elbow, Conduit, 1/2 x 90°              |
| 6    | 054827   | Shaft-Drive Pulser 9120                |
| 7    | 021372   | Conduit, 1/2 x 4-1/2                   |
| 8    | 066400   | 1/2" UNY Explosion-Proof Conduit Union |
| 9    | 039130   | Nut - Conduit Lock PN3-66 1/2"         |
| 10   | 022050   | Conduit - Pulser to Frame 9120         |
| 11   | 003340   | J-Box                                  |
| 12   | 003515   | J-Box Cover                            |
| 13   | 021058   | Elbow, Conduit, 90° M/F                |
| 14   | 021986   | Coupling- 1/2" Conduit                 |

## HIGH HOSE RETRIEVER OPTION



Complete High Hose Retriever installation requires a support post kit and a hose clamp/spring reel kit.

032674 Support Post Kit (Contains post and hardware: Items 3-10 below)

### Hose Clamp/Spring Reel Kits

|        |  |
|--------|--|
| 032666 | Kit, 5/8" Hardwall/Softwall (1" OD)              |
| 032659 | Kit, 3/4" Hardwall/Softwall (1-1/32" OD)         |
| 032663 | Kit, 3/4" Dayco Hardwall (1-1/8" OD)             |
| 032667 | Kit, 1" Softwall (1-1/2" OD)                     |
| 032668 | Kit, 1" Dayco Hardwall (1-7/16 OD)               |
| 032669 | Kit, 1" Hardwall (1-3/8 OD)                      |
| 032671 | Kit, HHR, Goodyear Prem, Vapor Recovery, Coaxial |

| Item | Part No. | Description  |
|------|----------|--|
| 1    | 030804   | Reel Assy, 5/8" & 3/4" Hardwall/Softwall   |
|      | 030805   | Reel Assy, 1" Softwall, 1" Hardwall; 1-1/4" Softwall; GY Prem Coax, Vapor Recovery |
| 2    | 020714   | Clamp, 5/8" Hardwall/Softwall  |
|      | 020712   | Clamp, 1" Softwall   |
|      | 020718   | Clamp, 1" Hardwall (1-7/16 OD)   |
|      | 020719   | Clamp, 1" Hardwall (1-3/8 OD)  |
|      | 026732   | Clamp, GY Prem Coax, Vapor Recovery  |

| Item | Part No. | Description             |
|------|----------|-------------------------|
| 3    | 063957   | Support Bar Assy.       |
| 4    | 017930   | Caplug                  |
| 5    | 051956   | Bolt, 5/16-18 x 2, SS   |
| 6    | 051940   | Bolt, 5/16-18 x 1-1/2   |
| 7    | 051821   | Bolt, 5/16-18 x 3/4, SS |
| 8    | 068080   | Washer, 5/16 Pltd       |
| 9    | 068875   | Lockwasher, 5/16 Pltd   |
| 10   | 047219   | Plug Button, 7/8        |



## 9120 SERIES KITS AND ACCESSORIES

### Filter Components

#### Adapters for External Filters

| Part No. | Description                                   |
|----------|---|
| 003043   | Adapter, 9122/9124, 3/4" NPT inlet and outlet |
| 003044   | Adapter, 9123/9125, 1" NPT inlet and outlet   |

#### Filter Elements, 9122/9124

| Part No. | Description |
|----------|-------------|
| 026005   | Standard    |
| 026042   | Hydrosorb   |
| 025909   | Methanol    |

#### Filter Elements, 9123/9125

| Part No. | Description |
|----------|-------------|
| 026018   | Standard    |
| 026019   | Hydrosorb   |
| 026284   | Methanol    |

### Pulser Kits (for field retrofit)

| Part No. | Description |
|----------|-------------|
| 025929   | 10:1 ratio  |
| 025930   | 100:1 ratio |

### Vapor Recovery Kits (For use with units containing the Vapor Recovery Option)

| Part No. | Description  |
|----------|--|
| 048501   | Vapor Recovery Ready Kit (includes coaxial to standard hose adapter, standard hose, nozzle hook, and nozzle boot)  |
| 048502   | Vapor Recovery Kit (includes vapor recovery nozzle hook and boot; no hose and nozzle).   |
| 048503   | Vapor Recovery Complete Kit (includes vapor recovery nozzle hook and boot, coaxial hose, nozzle, swivel, breakaway connector, and high hose retriever).                          |
| 032628   | Vapor Recovery Kit (Converts standard discharge assembly to a vapor recovery discharge assembly. Kit does not include high hose retriever, hose, nozzle, swivel, and breakaway.) |

### Repair Kits

| Part No. | Description                       |
|----------|-----------------------------------|
| 032718   | Reset Repair Parts Kit, 9122/9123 |

# WARRANTY

**General Statements:**

Gasboy International LLC. warrants all new equipment manufactured by Gasboy against defective material and/or workmanship, for the warranty period specified below, when the equipment is installed in accordance with specifications prepared by Gasboy.

This warranty does not cover damage caused by accident, abuse, Acts of God, lack of surveillance of automatic recording systems, negligence, mis-application, faulty installation, improper or unauthorized maintenance, installation or use in violation of product manuals, instructions, or warnings.

Under no circumstance shall Gasboy be liable for any indirect, special, or consequential damages, losses, or expenses to include, but not limited to, loss of product, loss of profits, litigation fees, or the use, or inability to use, our product for any for any purpose whatsoever.

Parts Only - During the warranty period, Gasboy will, at its option, repair or replace defective parts returned transportation prepaid to its factory.

On-Site Labor Included - Gasboy will also provide, within the Continental United States and during the warranty period, the services of an Authorized Service Representative (ASR) for on-site repair or replacement of defective parts.

Replacement Parts - Any system components that are not part of the original system order, including Island Card Readers, Pump Control Units, etc., are considered replacement parts.

| Equipment  | Term   | Coverage  |
|--|--|---|
| Commercial Pumps and Dispensers<br>Full-Cabinet Consumer Pumps   | One year from date of installation or 18 mos. from date of Gasboy International's invoice to the purchaser, whichever comes first.   | Parts and Labor.  |
| Small Transfer Pumps, Meters,<br>Pressure Regulators   | One year from date of installation or 18 mos. from date of Gasboy International's invoice to the purchaser, whichever comes first.- Excepting the Model 2020 Hand Pump, which has a 90-day warranty from date of GASBOY International's invoice.           | Parts Only.   |
| Keytrol  | One year from date of installation or 18 mos. from date of Gasboy International's invoice to the purchaser, whichever comes first.   | Parts and Labor.  |
| Fuel Management Systems:<br>- CFN/ Profit Point<br>- Series 1000/Fleetkey<br>- TopKAT<br>- Fuel Point Readers<br>(sold with new systems)       | One year from date of start-up or 15 mos. from date of Gasboy International's invoice to the purchaser, whichever comes first.- The basic warranty only applies to systems which have been started up by a Gasboy Authorized Service Representative (ASR). | Parts and Labor.  |
| Additional Fuel Point Items:<br>- Fuel Point Readers sold for retrofitting existing systems.<br>- Fuel Point vehicle and dispenser components. | One year from date of start-up or 15 mos. from date of Gasboy International's invoice to the purchaser, whichever comes first.   | Parts Only.   |
| Encoders, Embossers, Modems,<br>CRTs, and Logger Printers  | Purchased with Fuel Management System (Encoders, Embossers only):<br>90 days from the date of start-up by a Gasboy ASR, or 180 days from date of Gasboy International's invoice, whichever occurs first.   | Purchased with System (Encoders, Embossers only):<br>Parts only.                        |
|  | Purchased with Fuel Management System (Modems, CRTs, and Logger Printers only):<br>Matches system warranty.  | Purchased with System (Modems, CRTs, Logger Printers only):<br>Matches system warranty. |
|  | Purchased Separately:<br>90 days from date of Gasboy International's invoice to the purchaser.   | Purchased Separately:<br>Parts Only.  |
| Air Diaphragm Pumps  | Three years from date of purchase (for full warranty description, see Price List).   | Parts Only.   |
| Items not manufactured by Gasboy (ex. automatic nozzles, hoses, swivels, etc.)   | Not warranted by Gasboy International (consult original manufacturer's warranty).  | Not Applicable.   |
| Replacement Parts  | One year from date of Gasboy International's invoice to the purchaser.   | Parts Only.   |

To the extent permitted by law, this warranty is made in lieu of all other warranties, expressed or implied, including warranties of freedom from patent infringement, or merchantability, or fitness for a particular purpose, or arising from a course of dealing or usage of trade. No one is authorized to vary the terms of the warranty nor may anyone make any warranty of representation, or assume any liability other than that herein stated, in connection with the sale described herein. The acceptance of any order by Gasboy International is expressly made subject to the purchaser's agreement to these conditions.



**GASBOY INTERNATIONAL LLC**

P.O. Box 309, Lansdale, PA 19446 ● (800) 444-5579 ● FAX: (800) 444-5569 ● [www.gasboy.com](http://www.gasboy.com)