

Legacy Hi and Ultra-Hi Master, Satellite, Combo Specifications

Associated Manuals

MDE-2833 Pump and Dispenser Site Preparation manual

Available Models and Weights

Models	Description	Weight
JHB310	1-Grade, 1-Hose, Dispenser, Master, Hi Flow	310 lbs./140 kgs.
JHC310	1-Grade, 1-Hose, Dispenser, Satellite, Hi Flow	180 lbs./ 81 kgs.
JHB410	1-Grade, 2-Hose, Dispenser, Master, Hi Flow	
JHB510	2-Grade, 2-Hose, Dispenser, Master, Hi Flow	390 lbs./180 kgs.
JHC510	2-Grade, 2-Hose, Dispenser, Satellite, Hi Flow	235 lbs./106 kgs.
JHD510	Combo Dispenser, Hi Flow	370 lbs./167 kgs.
JHB600	1-Grade, 1-Hose, Dispenser, Master, Ultra-Hi Flow	320 lbs./144 kgs.
JHC600	1-Grade, 1-Hose, Dispenser, Satellite, Ultra-Hi Flow	180 lbs./ 81 kgs.
JHB800	2-Grade, 2-Hose, Dispenser, Master, Ultra-Hi Flow	380 lbs./171 kgs.
JHC800	2-Grade, 2-Hose, Dispenser, Satellite, Ultra-Hi Flow	235 lbs./106 kgs.
JHD800	Combo Dispenser, Ultra-Hi Flow	370 lbs./167 kgs.

Load Table

Field Wiring Diagram (Attached)	Voltage Rating
FE-332	110/115/120VAC

Operating Environment

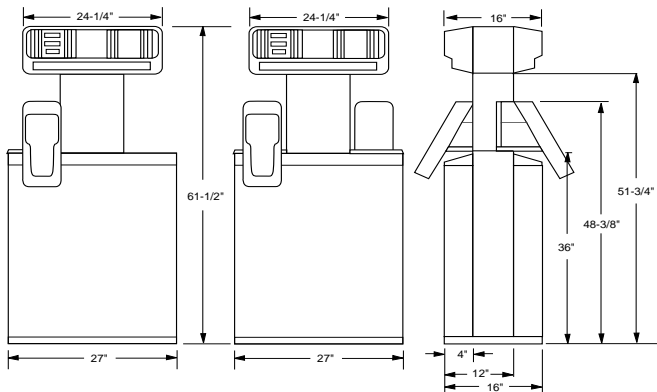
Environment	Range
Relative humidity	20% to 95% Non-condensing
Minimum outside ambient temperature	-22°F (-30°C)
Maximum outside ambient temperature	131°F (55°C)

Model Number Breakdown

	XX	X	X	X	X
Product Name _____					
JH Electronic					
Type _____					
B Master, Dispenser					
C Satellite, Dispenser					
D Master/Satellite, Combo Dispenser					
Configuration _____					
3 1-Grade, 1-Hose, High Flow					
4 1-Grade, 2-Hose, High Flow					
5 2-Grade, 2-Hose, High Flow					
6 1-Grade, 1-Hose, Ultra-Hi Flow					
7 1-Grade, 2-Hose, Ultra-Hi Flow					
8 2-Grade, 2-Hose, Ultra-Hi Flow					
Other (Fifth digit) _____					
0 Standard Unit					
1 New High Flow Master Hydraulics (Units built after 6/96)					
Sales information _____					
Sixth digit reserved for sales information					

Options	Order Entry Items
Electromechanical Totalizers	Lower Doors
Spring Retriever	Filter
Flexmast Mount	Hoses & Hose Clamps
	Breakaways
	Nozzles
	Decals
	Brands

High and Ultra-Hi Flow Models for Masters and Combos – Elevation



Screening Specifications

Lower Doors

Overall: 40.83" H x 34.34" W
 (Total Blank Area)
 Front Surface: 32.28" H x 24.67" W
 (Maximum Viewing Area)

Brand Panels

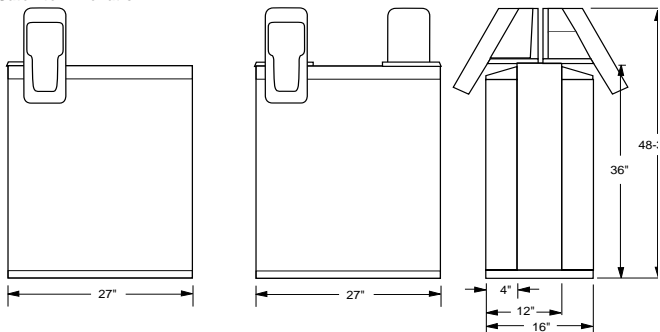
Overall: 2.24" H x 21.5" W
 (Total Blank Area)
 Screening Area: 1.86" H x 20.88" W

Model Description

Model Description	Model #
One-Grade 1-Hose	
Dispenser, Master, High Flow	JHB310
Dispenser, Master, Ultra-High Flow	JHB600
One-Grade 2-Hose	
Dispenser, Master, High Flow	JHB410
Two-Grade 2-Hose	
Dispenser, Master, High Flow	JHB510
Dispenser, Master, Ultra-High Flow	JHB800
Dispenser, Combo, High Flow	JHD510
Dispenser, Combo, Ultra-High Flow	JHD800

S0000256

Satellite – Elevation



Screening Specifications

Lower Doors

Overall: 40.83" H x 34.34" W
(Total Blank Area)

Front Surface: 32.28" H x 24.67" W
(Maximum Viewing Area)

Model Description

- One-Grade 1-Hose
Dispenser, High Flow
Dispenser, Ultra-High Flow
- Two-Grade 2-Hose
Dispenser, High Flow
Dispenser, Ultra-High Flow

S000

High Flow Models for Master/Satellite and Combo Units – Foundation Diagram

(Models JHB310, JHC310, JHB410, JHB510, JHC510, JHD510)

PRODUCT INLET LOCATIONS

SINGLE MASTER

A	OUTLET TO SATELLITE A
B	INLET FROM TANK A
C	NOT USED
D	NOT USED

POSITION	FUNCTION
1-GRADE, 1-HOSE - JHB310	

DUAL MASTER

A	OUTLET TO SATELLITE A
B	INLET FROM TANK A
C	NOT USED
D	OUTLET TO SATELLITE B

POSITION	FUNCTION
1-GRADE, 2-HOSE - JHB410	

A	OUTLET TO SATELLITE A
B	INLET FROM TANK B
C	NOT USED
D	OUTLET TO SATELLITE B

POSITION	FUNCTION
2-GRADE, 2-HOSE - JHB510	

COMBO

A	OUTLET TO SATELLITE A
B	INLET FROM TANK
C	NOT USED
D	INLET FROM REMOTE

POSITION	FUNCTION
JHD510	

SINGLE SATELLITE

A	INLET FROM REMOTE A
B	NOT USED
C	NOT USED
D	NOT USED

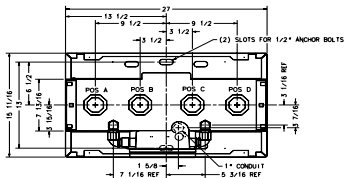
POSITION	FUNCTION
1-GRADE, 1-HOSE - JHC310	

DUAL SATELLITE

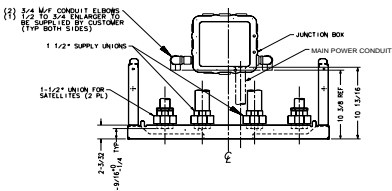
A	INLET FROM REMOTE A
B	NOT USED
C	NOT USED
D	INLET FROM REMOTE B

POSITION	FUNCTION
2-GRADE, 2-HOSE - JHC510	

TOP VIEW



FRONT VIEW



S0000258

To install double poppet shear valves use the following kits which will increase the height of the supply unions on your unit to 2-7/16" above grade.

Double Poppet Shear Valve Kits

Includes feedline assembly (to meter), union and nipple:

Used for one-grade, one-hose models
and two-grade, two-hose models

K94294

-01 150# union

-02 300# union

Used for one-grade, two-hose models

K94295

-01 150# union

-02 300# union

Ultra-High Flow Models for Master and all Satellite Units – Foundation Diagram

(Models JHB600, JHC600, JHB800, JHC800, JHD800)

PRODUCT INLET LOCATIONS

SINGLE MASTER

A	INLET FROM TANK
B	OUTLET TO SATELLITE A
C	NOT USED
D	NOT USED
POSITION	FUNCTION

1-GRADE, 1-HOSE - JHB600

DUAL MASTER

A	INLET FROM TANK A
B	OUTLET TO SATELLITE A
C	OUTLET TO SATELLITE B
D	INLET FROM TANK B
POSITION	FUNCTION

2-GRADE, 2-HOSE - JHB800

COMBO

A	INLET FROM TANK
B	OUTLET TO SATELLITE A
C	NOT USED
D	INLET FROM REMOTE
POSITION	FUNCTION

JHD800

SINGLE SATELLITE

A	INLET FROM REMOTE A
B	NOT USED
C	NOT USED
D	NOT USED
POSITION	FUNCTION

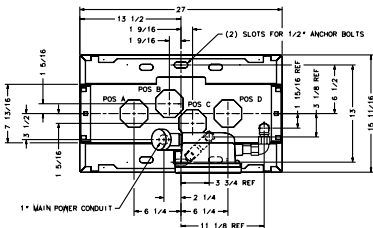
1-GRADE, 1-HOSE - JHC600

DUAL SATELLITE

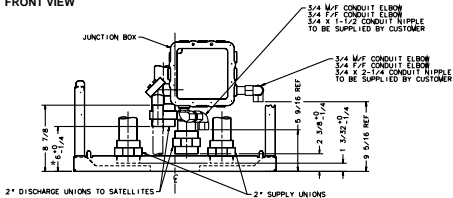
A	INLET FROM REMOTE A
B	NOT USED
C	NOT USED
D	INLET FROM REMOTE B
POSITION	FUNCTION

2-GRADE, 2-HOSE - JHC800

TOP VIEW



FRONT VIEW



* POS B	ELEVATION	UNIT TYPE
	6" +0/-1/4	DUAL MASTER
	2.38" +0/-1/4	SINGLE MASTER OR COMBO

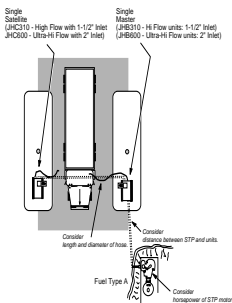
S0000259

Master/Satellite, Combo Site Configuration Options

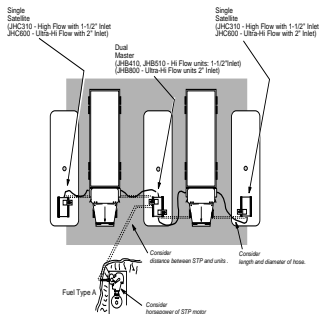
Some variables that affect flow rates. Consider these when laying out a site:

Quantity of: Islands, Dispensers, STP's
 Size of: Model types, Pump (horse power)
 Diameter of: Hoses, Pipes, etc.
 Distance between: STP's and Dispenser,
 Length of: Hoses, Pipe run, etc.
 Maximum use of all dispensers working at same time.

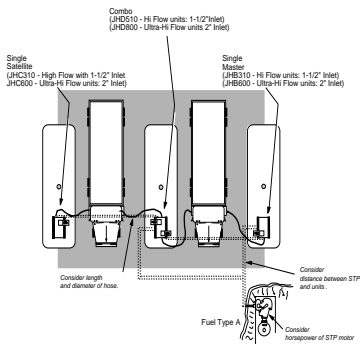
Single Master with Single Satellite Configuration



Dual Master with Single Satellites Configuration



Combo Configuration



Dual Satellite, Dual Masters and Single Satellites Configuration

