

Salesmaker™ -2H and 4A Pumps and Dispensers

Model No.	Description
AM1222A	Salesmaker-4A Two-Product Dispenser
AM2222A	Salesmaker-4A Two-Product Pump
AM6222A	Salesmaker-2H One-Product Dispenser

Notes:

A 2 or 4 in the 3rd digit denotes single-sided units.

A 1 in the 5th digit denotes vapor recovery models.

A 3 in the 5th digit denotes vapor ready models.

Load Table

See attached wiring diagrams.

- FE-225B Salesmaker-2H/4A Dispensers
- FE-289 Salesmaker-4A Pumps, Single Phase
- FE-291 Salesmaker-4A Pumps Three-Phase

Operating Environment

Relative Humidity	20% to 95% non-condensing
Minimum Outside Ambient Temperature.....	-22°F (-30°C)
Maximum Outside Ambient Temperature	104°F (40°C)

Performance Requirements

Minimum Delivery Rate	10.6 gpm @ 35 psi inlet pressure
.....	(40 lpm @ 102 kg/cm ² inlet pressure)
Meter Accuracy	± .25% from 1.5 to 15 gpm (5.7 to 57 lpm)

Weights

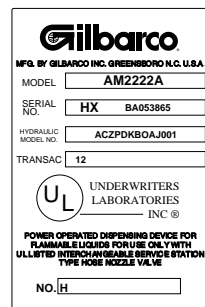
Salesmaker-2H

Dispenser Weight 700 pounds/315 kilograms

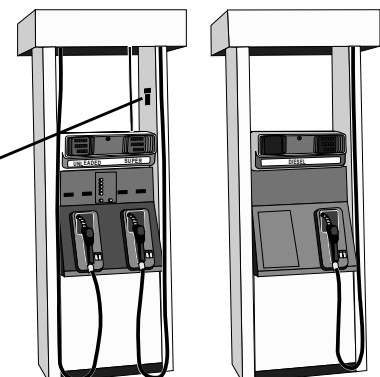
Salesmaker-4A

Dispenser Weight 700 pounds/315 kilograms

Pump Weight 920 pounds/414 kilograms



Some export models use this plate.

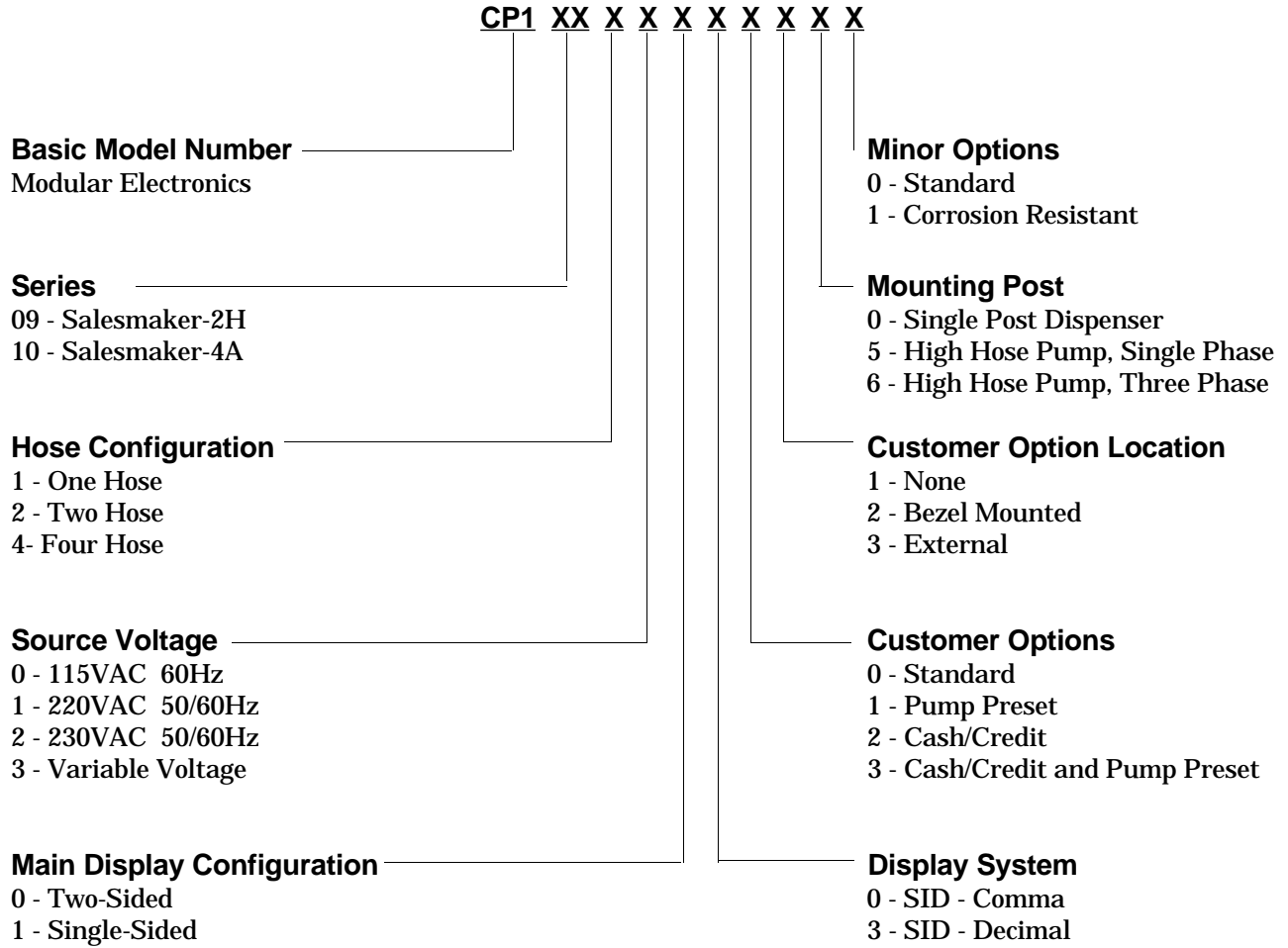


Model Number Breakdown • Hydraulics

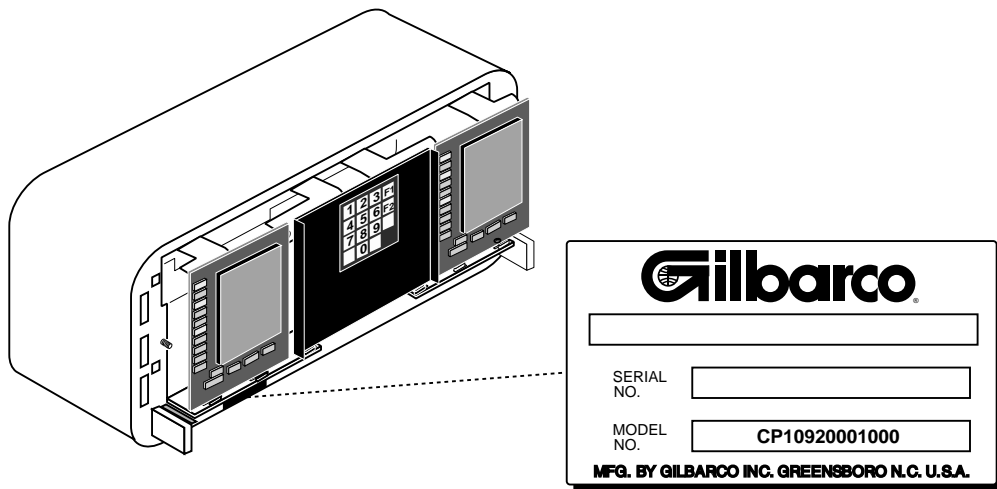
The model number is attached to a plate on the corresponding module.

	AC	Z	X	X	X	X	X	X	X	XXX
Base Number _____										
A U.S.										
C Electronic Gas Pump/Dispenser										
Z Salesmaker™ -2H and 4A _____										
A Standard Dispenser _____										
B Standard Pump _____										
Class _____										
D Two-Sided; Dual Product; Four Meter										
F Dual One-Product										
G Single One-Product										
S Dual Two-Product										
Nozzle Boot and Totalizer _____										
B V/R Nozzle Boot, V/R Hook, U.S. Gallons										
J V/R Nozzle Boot, Standard Hook, U.S. Gallons										
K V/R Nozzle Boot, Standard Hook, Metric										
G Standard Nozzle Boot, Metric										
Hydraulic Function _____										
B Preset										
Major Revision _____										
M Value Analyzed Hydraulics										
N Value Analyzed Hydraulics with Coaxial Hose and Nozzle										
O Original Release										
Vapor Fittings _____										
A Less Vapor Recovery Piping										
C Vapor Ready, Gilbarco Discharge Fittings										
F Vapor Ready, Emco-Wheaton Discharge Fittings										
Product Code _____										
A Salesmaker-4A, 94" High; Solid Upper Housing, Domestic										
C Salesmaker-2H, 94" High; Solid Upper Housing										
F Salesmaker-2H, 94" High; Open Upper Housing										
G Salesmaker-4A, 94" High; Open Upper Housing, International										
H Salesmaker-4A, 94" High; Open Upper Housing, Domestic										
J Salesmaker-4A, 94" High; Solid Upper Housing, International										
Reference _____										

Model Number Breakdown • Electronics



Thirteen digit electronics model number is stamped on plate attached to bottom of electronics module.



Elevation/Footprint

Salesmaker™ -2H

Screening Specifications

Lower Doors

Overall: 27.38" H x 28.92" W
(Total Blank Area)

Front Surface: 24.58" H x 26.12" W

Canopy Option (Screening Area)

Front Surface: 9.31" H x 38.62" W

Side Surface: 9.31" H x 31.12" W

Brand Panels

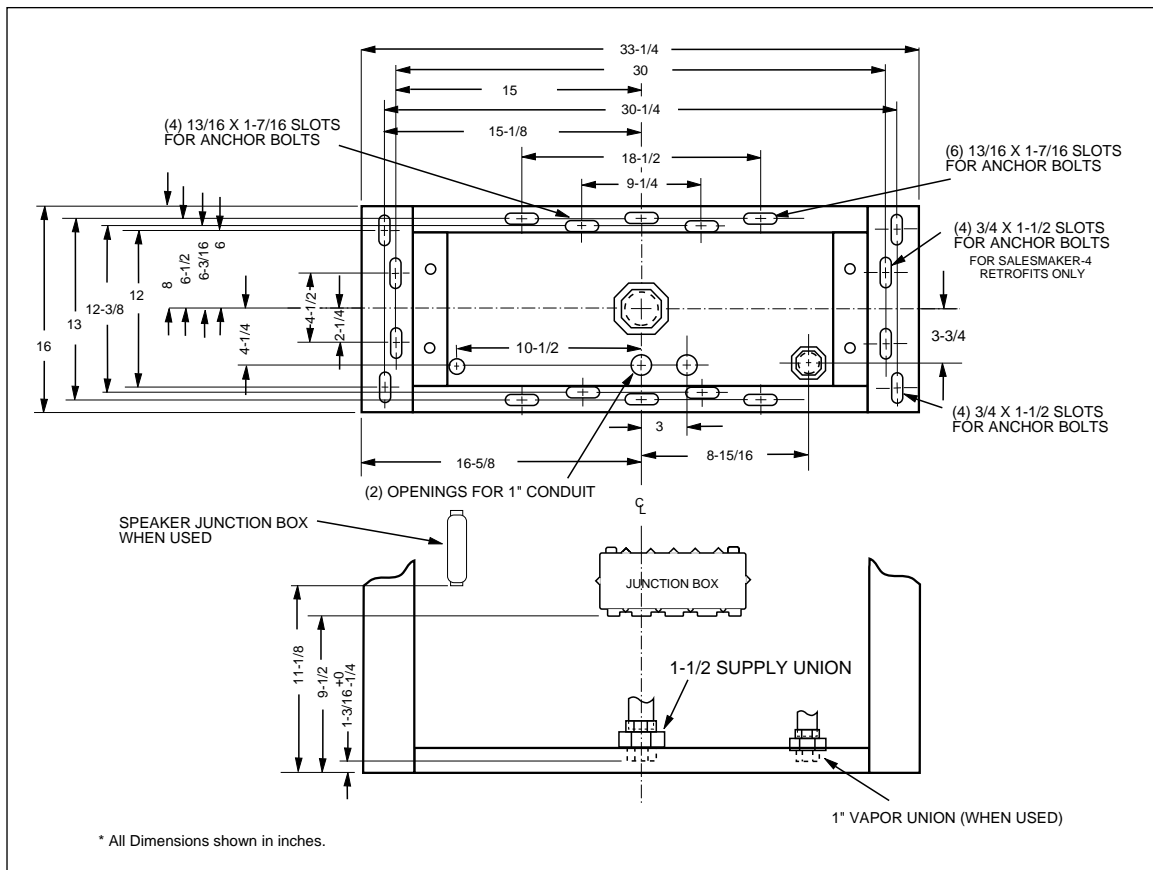
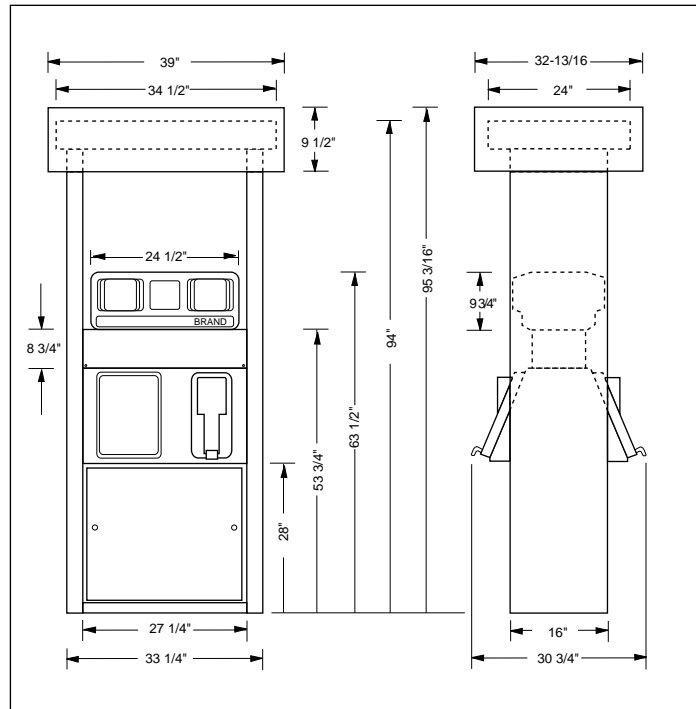
Overall: 2.24" H x 28.92" W
(Total Blank Area)

Screening Area: 1.86" H x 20.88" W
(Maximum Viewing Area)

Octane Decal Size

Overall: 2.25" H x 2.75" W

Screening Area: 2" H x 2.5" W



Salesmaker™ -4A Dispenser

Screening Specifications

Lower Doors

Overall: 27.38" H x 28.92" W
(Total Blank Area)

Front Surface: 24.58" H x 26.12" W

Canopy Option (Screening Area)

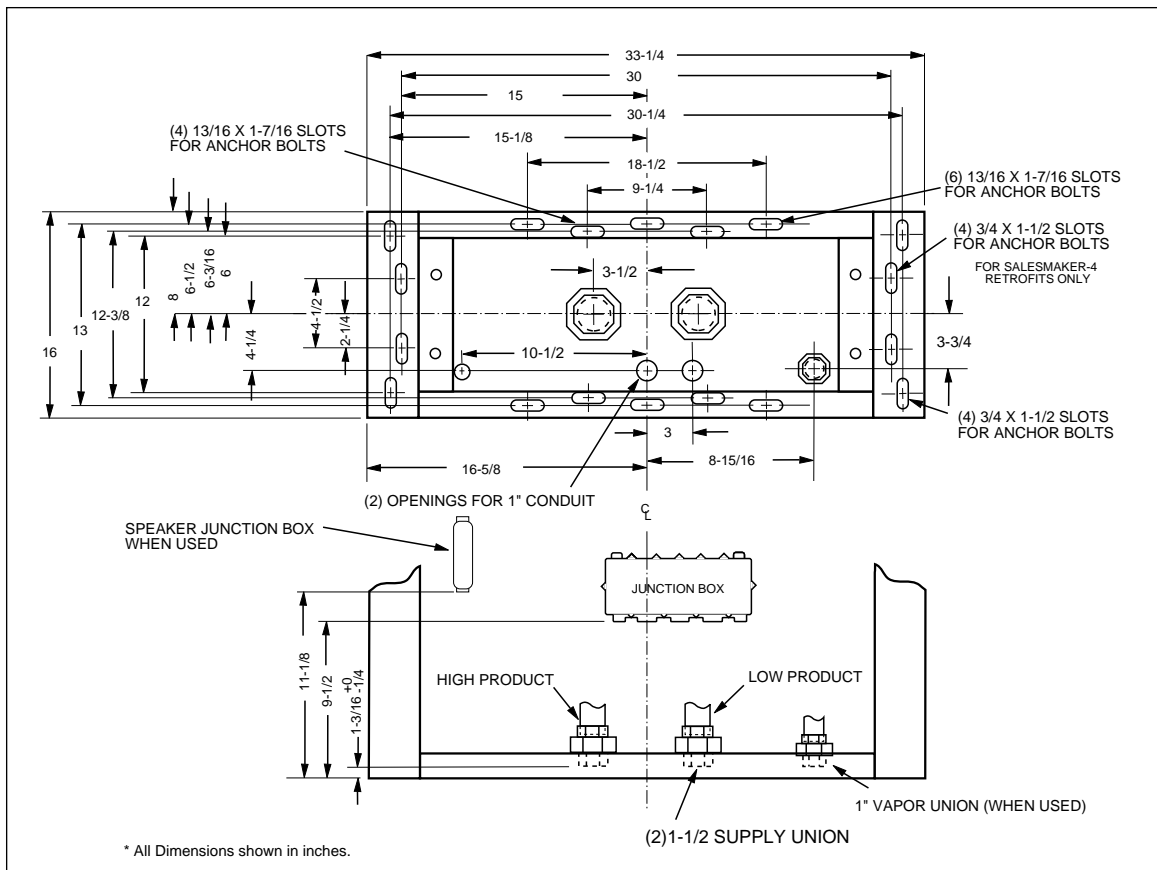
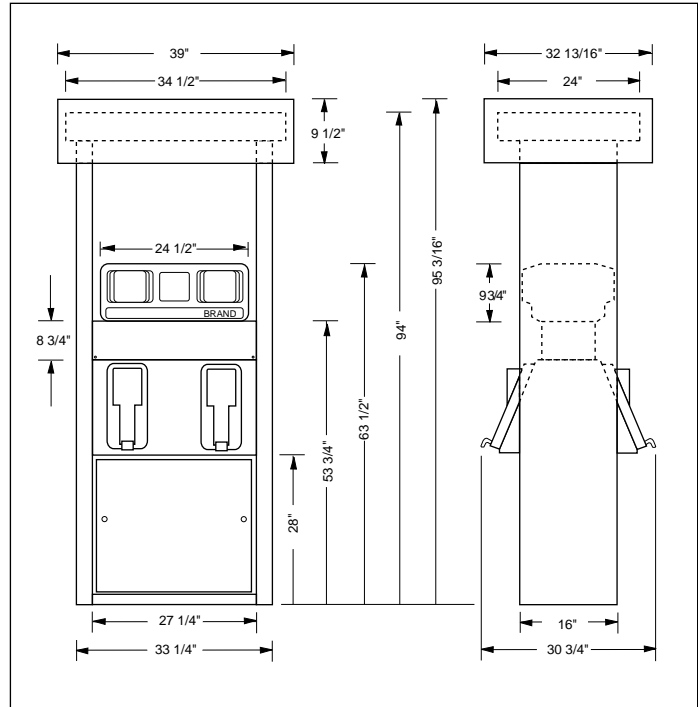
Front Surface: 9.31" H x 38.62" W

Side Surface: 9.31" H x 31.12" W

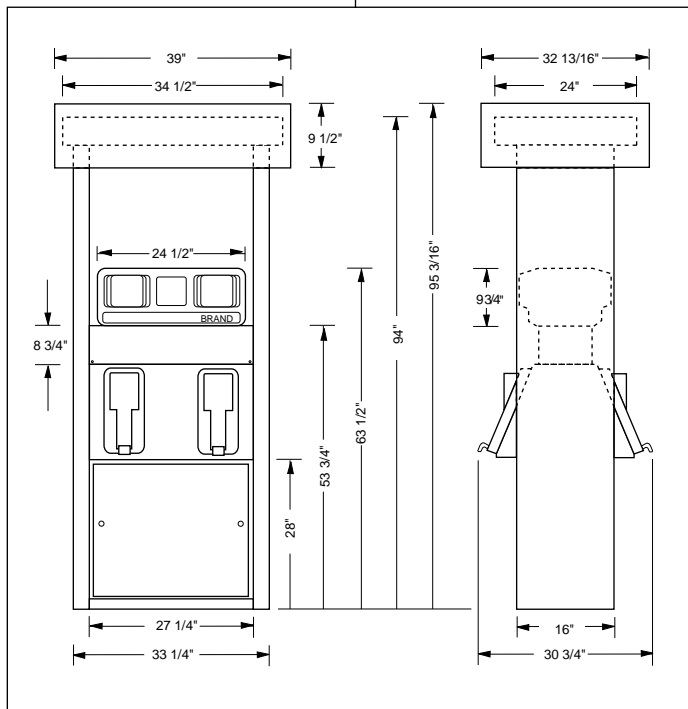
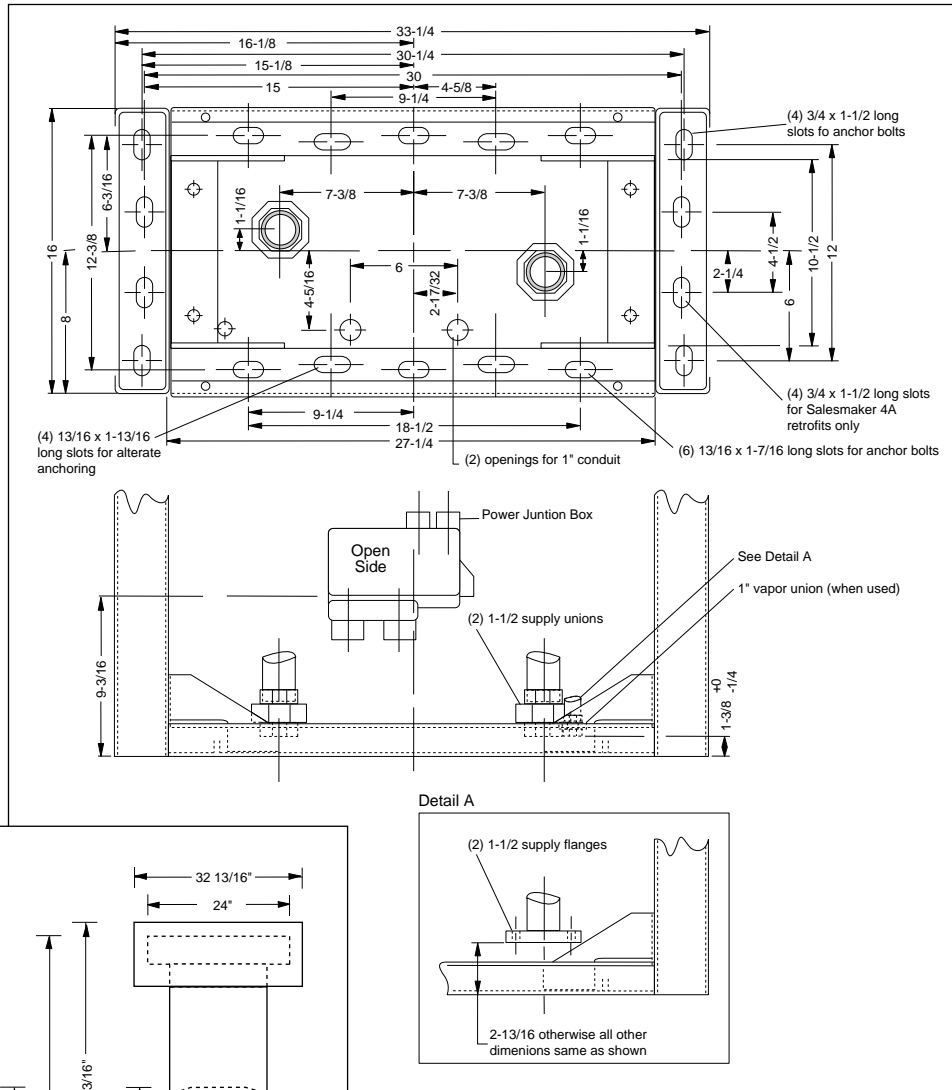
Brand Panels

Overall: 2.24" H x 28.92" W
(Total Blank Area)

Screening Area: 1.86" H x 20.88" W
(Maximum Viewing Area)



Salesmaker™ -4A Pump



Screening Specifications

Lower Doors

Overall: 27.38" H x 28.92" W
(Total Blank Area)

Front Surface: 24.58" H x 26.12" W
Canopy Option (Screening Area)

Front Surface: 9.31" H x 38.62" W
Side Surface: 9.31" H x 31.12" W

Brand Panels

Overall: 2.24" H x 28.92" W
(Total Blank Area)

Screening Area: 1.86" H x 20.88" W
(Maximum Viewing Area)