

DESCRIPTIVE SYSTEM DOCUMENT FOR CERTIFICATE NUMBER DEMKO 06 ATEX 137480X

TLS-50/TLS2/TLS-IB CONSOLES

NON-HAZARDOUS AREA

HAZARDOUS AREA  
INTRINSICALLY SAFE (I.S.) APPARATUS

REV	DESCRIPTION	BY	DATE	ECO
D	ADDED SURGE PROTECTOR; UPDATED NOTES 8, 10, AND 11	KG	04/26/12	CN-04987
E	ADDED MAG PLUS1 CERTIFICATION NO.: TUV 12 ATEX 105828	TB	2012/07/26	CN-05344
F	1. ADD II 1/2...T4. 2. ADD CERT. NO: DEMKO ...1306057X. 3. UPDATE GROUNDING SYMBOL 4. UPDATE DASHED LINES. 5. UPDATE NOTE 14. 6. ADD NOTE 15 AND 16.	TKR	2013/10/17	CN-06775

AMBIENT TEMPERATURE RANGE  
0°C ≤ Ta ≤ 40°C

ASSOCIATED APPARATUS

AMBIENT TEMPERATURE RANGE  
(UNLESS NOTED)  
-40°C ≤ Ta ≤ 60°C

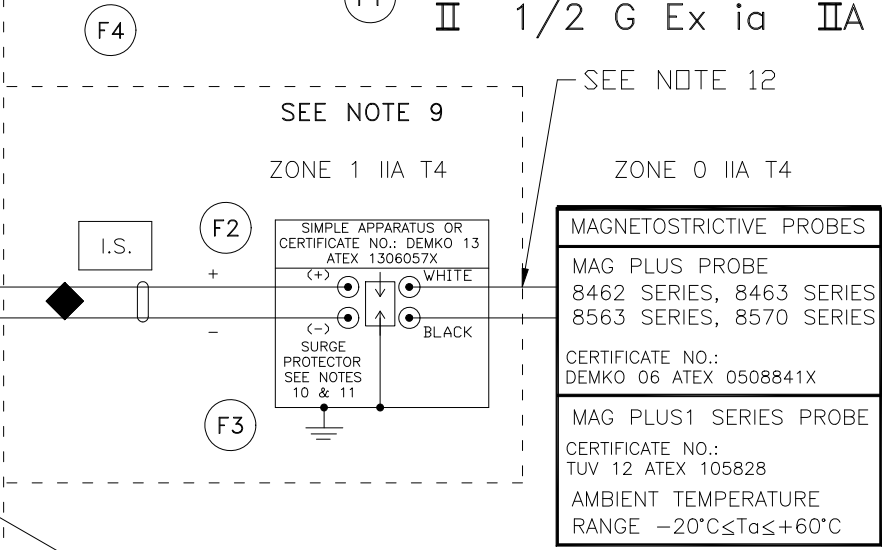
Ex II (1) G [Ex ia] IIA

Ex II 1 G Ex ia IIA T4  
II 2 G Ex ia IIA T4  
II 1/2 G Ex ia IIA T4

TLS RF CONSOLE  
CERTIFICATE NO.:  
DEMKO 06 ATEX 137478X

UNSPECIFIED RECEIVER  
TLS RF CONSOLE  
OPTICALLY ISOLATED  
INTRINSICALLY SAFE  
CIRCUITS

TLS2 CONSOLE  
TLS-50 CONSOLE  
TLS-IB CONSOLE  
CERTIFICATE NO.:  
DEMKO 06 ATEX 137485X

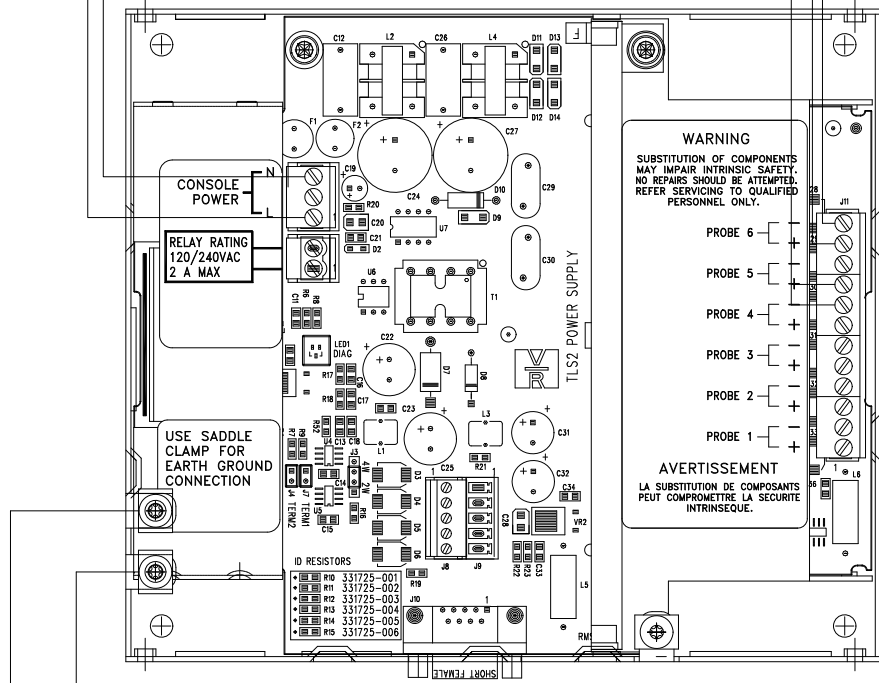


MAGNETOSTRICTIVE PROBES  
MAG PLUS PROBE  
8462 SERIES, 8463 SERIES  
8563 SERIES, 8570 SERIES  
CERTIFICATE NO.:  
DEMKO 06 ATEX 0508841X  
MAG PLUS1 SERIES PROBE  
CERTIFICATE NO.:  
TUV 12 ATEX 105828  
AMBIENT TEMPERATURE  
RANGE -20°C ≤ Ta ≤ +60°C

Certified Product  
No changes permitted  
without reference to the  
"Notified Body (NB)"

SEE NOTE 7

AC NEUTRAL  
AC LINE



WARNING  
SUBSTITUTION OF COMPONENTS  
MAY IMPAIR INTRINSIC SAFETY.  
NO REPAIRS SHOULD BE ATTEMPTED.  
REFER SERVICING TO QUALIFIED  
PERSONNEL ONLY.


AVERTISSEMENT  
LA SUBSTITUTION DE COMPOSANTS  
PEUT COMPROMETTRE LA SECURITE  
INTRINSEQUE.

- RESISTORS
- R0 331725-001
- R1 331725-002
- R2 331725-003
- R3 331725-004
- R4 331725-005
- R5 331725-006


BARRIER GROUND  
SEE NOTE 8  
CHASSIS GROUND  
SEE NOTE 7

SEE NOTES 1 THRU 5

SEE SHEET 2 FOR NOTES

DO NOT SCALE DRAWING				
	NAME	DATE	NEXT GRP.	-----
DESIGNER	C.ROUTHIER	4/23/03	ASSEMBLY	-----
PROJECT	B. ANDREW	4/23/03	FORM NO	-----
MATERIAL	 SIMSBURY, CONNECTICUT 06070 U.S.A.			
NOTICE - THIS DOCUMENT IS THE PROPERTY OF THE VEEDER-ROOT COMPANY AND IS NOT TO BE DISCLOSED, REPRODUCED IN WHOLE OR IN PART, OR USED FOR MANUFACTURE BY ANYONE WITHOUT VEEDER-ROOT'S WRITTEN CONSENT.				
REFERENCE MFG. SPEC. VRS 81005 WHERE IT IS APPLICABLE	DESCRIPTIVE SYS DOCUMENT ATEX TLS-50, TLS2 & TLS-IB			
UNSPECIFIED TOLERANCES +/- 0.005	SIZE D	DRAWING NUMBER 331940-003	REV. F	STATUS NFP
	SCALE NONE	SHEET 1	OF 2	

NOTES:

1. A MAXIMUM CABLE LENGTH OF 305 METERS OR 1,000 FEET IS ALLOWED TO CONNECT ANY SINGLE I.S. DEVICE TO THE ASSOCIATED APPARATUS. THE TOTAL ALLOWABLE CABLE LENGTH USED TO CONNECT ALL OF THE I.S. DEVICES TO THE ASSOCIATED APPARATUS IS 2,438 METERS OR 8,000 FEET.
2. EACH CABLE (OR WIRING) USED TO CONNECT I.S. DEVICES TO THE CONSOLE MUST NOT EXCEED A CAPACITANCE OF 328 pf/METER OR 100 pf/FOOT.
3. THE TOTAL CABLE CAPACITANCE, COMBINING ALL OF THE CABLE USED TO CONNECT THE INTRINSICALLY SAFE DEVICES TO THE ASSOCIATED APPARATUS, MUST NOT EXCEED 0,8μF.
4. EACH CABLE MUST NOT EXCEED AN INDUCTANCE OF 0,656 μH/METER OR 0,2 μH/FOOT.
5. THE L/R RATIO OF THE CABLE MUST NOT EXCEED 200 μH/OHM.
6. FOR EACH TLS-50, TLS2, TLS-IB CONSOLE INSTALLED THE MAXIMUM NUMBER OF I.S. DEVICES CONNECTED TO THE ASSOCIATED APPARATUS IS 8. A MAXIMUM OF TWO TLS RF CONSOLES CAN BE CONNECTED TO THE CONSOLE, WHERE EACH CONNECTED TLS RF CHANNEL EQUALS ONE I.S. DEVICE.
7. NON-HAZARDOUS ASSOCIATED APPARATUS IS AS SHOWN AND MUST NOT BE SUPPLIED FROM OR CONTAIN, UNDER NORMAL OR ABNORMAL CONDITIONS, A SOURCE OF POTENTIAL WITH RESPECT TO EARTH IN EXCESS OF 250V RMS OR 250V dc, Um = 250V.
8. CONNECT THE BARRIER GROUND TO THE EARTH GROUND BUS AT THE POWER DISTRIBUTION PANEL WITH A 4 sq. mm (10 AWG) (OR LARGER) CONDUCTOR. GROUNDING MUST COMPLY WITH EN 60079-14, CLAUSE TITLED "EARTHING OF INTRINSICALLY SAFE CIRCUITS."
9. THIS SYMBOL, , DENOTES A FIELD WIRING CONNECTION INSIDE A WEATHERPROOF JUNCTION BOX.
10. A RISK ANALYSIS MUST BE PERFORMED TO DETERMINE IF THE INSTALLATION LOCATION IS SUSCEPTIBLE TO LIGHTNING OR OTHER SURGES. IF NECESSARY, ADD PROTECTION AGAINST LIGHTNING AND OTHER ELECTRICAL SURGES IN ACCORDANCE WITH EN 60079-25, SECTION TITLED "PROTECTION AGAINST LIGHTNING AND OTHER ELECTRICAL SURGES." IF REQUIRED INSTALL A SURGE PROTECTOR IN ZONE 1 AS CLOSE AS POSSIBLE TO THE BOUNDARY WITH ZONE 0. THE SITE PREPARATION GUIDE, MANUAL NO. 577013-578, PROVIDES ADDITIONAL DETAILS ABOUT RISK ASSESSMENT.
11. IT IS THE RESPONSIBILITY OF THE INSTALLER TO DETERMINE COMPLIANCE OF SIMPLE APPARATUS. SIMPLE APPARATUS USED WITH THIS SYSTEM MUST CONFORM TO THE FOLLOWING REQUIREMENTS:
  - A) CONSTRUCTED OF PASSIVE COMPONENTS ONLY, FOR EXAMPLE, SWITCHES, JUNCTION BOXES AND RESISTORS.
  - B) CONSTRUCTED WITHOUT ANY SOURCES OF STORED ENERGY SUCH AS BATTERIES, CAPACITORS AND INDUCTORS.
  - C) CONSTRUCTED WITHOUT SOURCES OF GENERATED ENERGY THAT PRODUCE MORE THAN 1.5V, AND 25mW OR SOURCES THAT CONTAIN A MEANS OF INCREASING THE VOLTAGE.
  - D) IF CONSTRUCTED WITH A METALLIC HOUSING THE SIMPLE APPARATUS SHALL BE CAPABLE OF WITHSTANDING THE TEST VOLTAGE TO EARTH IN ACCORDANCE WITH EN 60079-11, CLAUSE TITLED "DIELECTRIC STRENGTH REQUIREMENTS" AND ITS TERMINALS MUST CONFORM TO EN 60079-11, CLAUSE 6.2.
  - E) NONMETALIC ENCLOSURES AND ENCLOSURES OF LIGHT METALS MUST COMPLY WITH EN 60079-0 SECTIONS 7 & 8 AND EN 60079-26, CLAUSE 4.3.3.
  - F) BASED ON THE AVAILABLE POWER WITHIN THE SYSTEM, SIMPLE APPARATUS THAT HAVE ELECTRICAL COMPONENTS THAT EXCEED 20 sq. mm IN TOTAL SURFACE AREA, MAY BE ASSESSED AS HAVING A T4 TEMPERATURE CODE, AT THE SPECIFIED AMBIENT TEMPERATURE RANGE OF -40°C ≤ Ta ≤ +60°C. OTHER TYPES OF SIMPLE APPARATUS MUST BE ASSESSED IN ACCORDANCE WITH EN 60079-11, CLAUSE TITLED "SIMPLE APPARATUS."
  - G) SIMPLE APPARATUS SHALL NOT CONTAIN ANY MEANS OF INCREASING THE AVAILABLE VOLTAGE OR CURRENT, FOR EXAMPLE DC TO DC CONVERTERS.
12. CABLE GLAND MUST BE A SUITABLE PROCESS CONNECTION IN ACCORDANCE WITH EN 60079-26.
13. SPECIAL CONDITIONS FOR SAFE USE, AS APPLICABLE AND AS DEFINED IN THE CERTIFICATE OF CONFORMITY AND THE SITE PREPARATION GUIDE, MANUAL NO. 577013-578, MUST BE TAKEN INTO ACCOUNT.
- F5** 14. TLS-50, TLS2 AND TLS-IB CONSOLES MUST BE INSTALLED IN AN INDOOR, NON-HAZARDOUS AREA IN ACCORDANCE WITH THE DESCRIPTIVE SYSTEM DOCUMENT AND THE INSTALLATION INSTRUCTIONS. ONLY ONE TLS-50, TLS2, AND TLS-IB CONSOLE CAN BE CONNECTED TO ANY SINGLE INTRINSICALLY SAFE APPARATUS AS DESCRIBED ON SHEET ONE OF THIS DOCUMENT. MULTIPLE SOURCES OF POWER, ADDITIONAL TLS CONSOLES OR OTHER ASSOCIATED APPARATUS, CANNOT BE CONNECTED TO THE SAME INTRINSICALLY SAFE APPARATUS.
- F6** 15. THE MAG PLUS1 SERIES PROBES MARKED Ex ia IIB T4 OR Ex ia IIC T4, WHEN USED WITHIN THIS SYSTEM THE DEVICE IS LIMITED TO GROUP IIA.
16. REFERENCE THE DEVICE CERTIFICATION FOR APPLICABLE STANDARD EDITIONS.

STANDARDS:

[Ex ia] IIA

EN 60079-0	ELECTRICAL APPARATUS FOR POTENTIALLY EXPLOSIVE ATMOSPHERES-PART 0: GENERAL REQUIREMENTS
EN 60079-11	ELECTRICAL APPARATUS FOR POTENTIALLY EXPLOSIVE ATMOSPHERES-PART 11: INTRINSIC SAFETY "I"
EN 60079-25	ELECTRICAL APPARATUS FOR EXPLOSIVE GAS ATMOSPHERES-PART 25: INTRINSICALLY SAFE SYSTEMS
EN 60079-26	ELECTRICAL APPARATUS FOR EXPLOSIVE GAS ATMOSPHERES - PART 26: CONSTRUCTION, TEST AND MARKING OF GROUP II ZONE 0 ELECTRICAL APPARATUS



NOTICE - THIS DOCUMENT IS THE PROPERTY OF THE VEEDER-ROOT COMPANY AND IS NOT TO BE DISCLOSED, REPRODUCED IN WHOLE OR IN PART, OR USED FOR MANUFACTURE BY ANYONE WITHOUT VEEDER-ROOT'S WRITTEN CONSENT.

DESCRIPTIVE SYS DOCUMENT  
ATEX TLS-50, TLS2 & TLS-IB

SIZE	DRAWING NUMBER	REV.	STATUS
D	331940-003	F	NFP

SCALE NONE SHEET 2 OF 2