

# The Advantage® 4x4

## Available Models and Weights

Model No.	Description	Weight
BB2	The Advantage 4x4 Dispenser, 1 side	750 lbs/350 kgs
BB3	The Advantage 4x4 Dispenser, 2 sides	
BC2	The Advantage 4x4 Pump, 1 side	875 lbs/394 kgs
BC3	The Advantage 4x4 Pump, 2 sides	

## Load Table

Field Wiring Diagram (Attached)	Voltage Rating
FE-330	110/115/120VAC and 220/230/240VAC, Dispenser
FE-331	110/115/120VAC and 220/230/240VAC, Pump

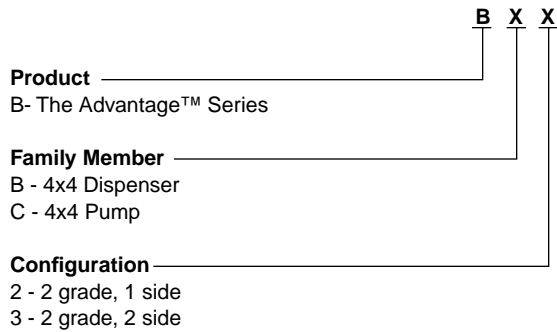
## Related Manuals

MDE-2833	Pump and Dispenser Site Preparation
MDE-3116	Distribution Box Installation Manual
MDE-2755	STP Installation Manual

## Operating Environment

Environment	Range
Relative humidity	20% to 95% non-condensing
Minimum outside ambient temperature	-22°F (-30°C)
Maximum outside ambient temperature	131°F (55°C)

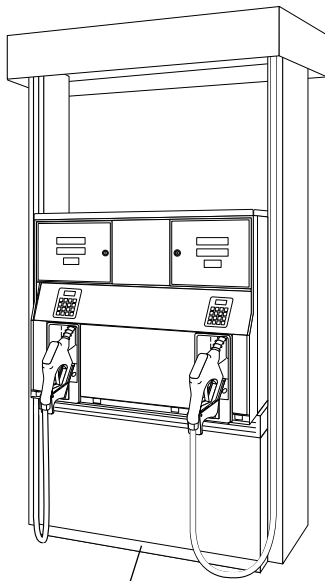
## Model Number Breakdown



### Options

- Brand Panel, Backlit
- Brand Panel, Lighted
- Brand Panel, Unlit
- Button, Call
- Hose Retriever
- Light Conduit (Canopy)
- Nozzle, Push-To-Start
- Nozzle, Lever Activated
- Preset, Customer Programmable
- Speaker
- Totalizers, Mechanical Gallon
- Totalizers, Mechanical Imperial
- Totalizers, Mechanical Metric

4 x 4

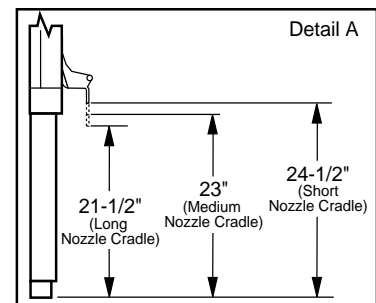
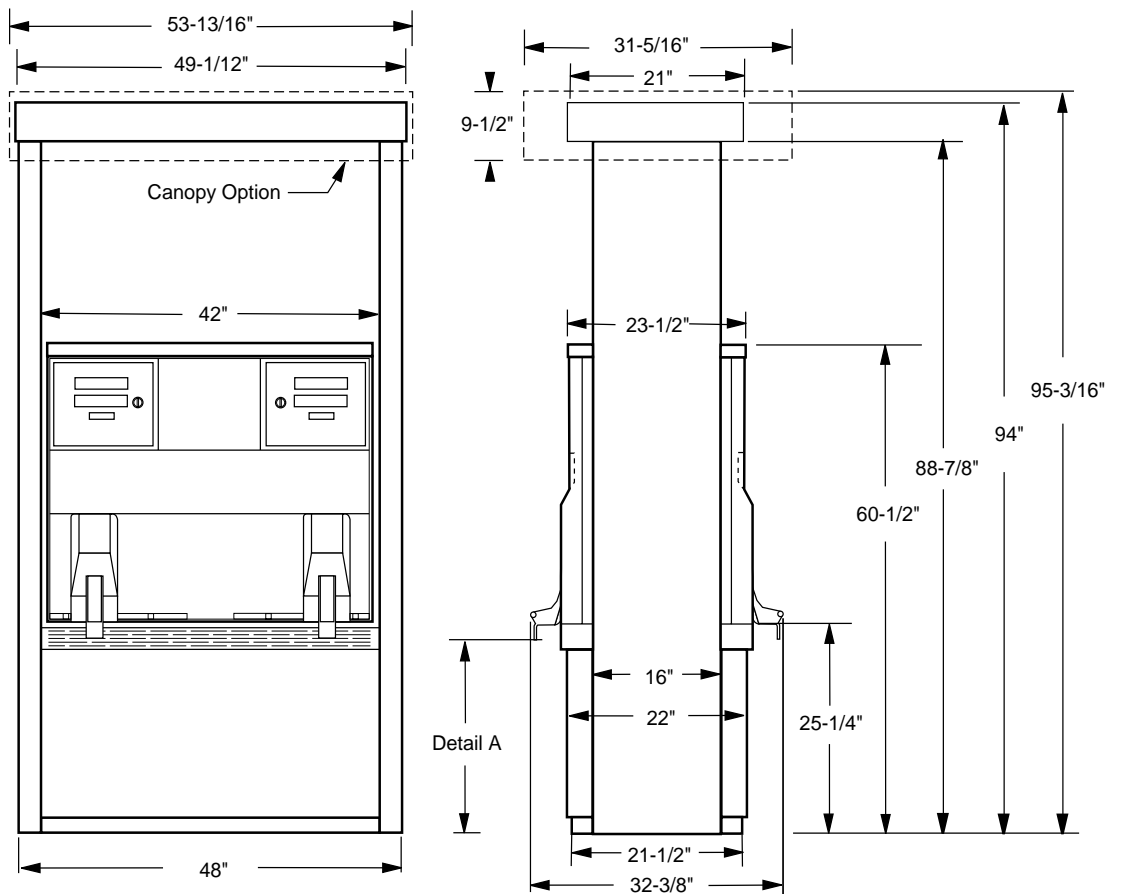


Model number plate

<input type="checkbox"/> Vapor/Vac <input type="checkbox"/> Balance Vapor <input type="checkbox"/> Balance Ready <input type="checkbox"/> Lever Activate <input type="checkbox"/> Button Activate <input type="checkbox"/> CRIND <input type="checkbox"/> Cash/Credit <input type="checkbox"/> Pump Preset	<input type="checkbox"/> Cash Acceptor <input type="checkbox"/> Retriever <input type="checkbox"/> U.S. Gal Tots <input type="checkbox"/> Metric Tots <input type="checkbox"/> Imp Gal Tots <input type="checkbox"/> Overhead Spkr <input type="checkbox"/> Crpy Lgt Cndt	<p style="font-size: small; margin: 0;">MFG. BY GILBARCO, INC. GREENSBORO, N.C. U.S.A.</p> <p style="font-size: x-small; margin: 0;">For use with equipment specified in installation instructions. N.Y.F.D. C. of A. #4805</p>
		Model No. <b>BC3</b> Serial No. <b>DX PA001020</b>
		Underwriters Laboratories Inc. Listed Power Operated Dispensing Device For Flammable Liquids No. _____

## Elevation Diagram • Models BB2 and BB3

### (4x4 Dispenser)



## Screening Specifications

### Lower Doors

Overall: 22.94" H x 49.74" W

Front Surface: 19.94" H x 42.25" W

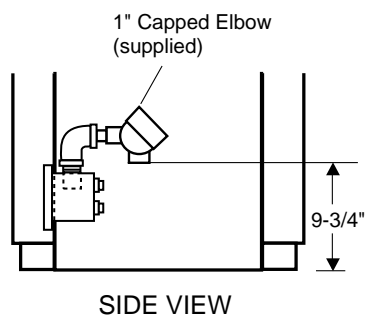
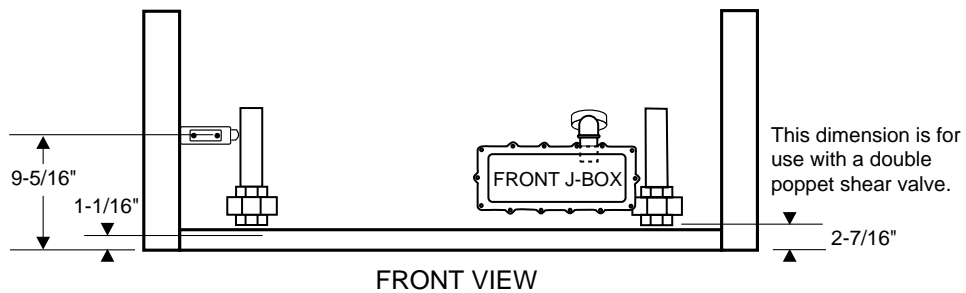
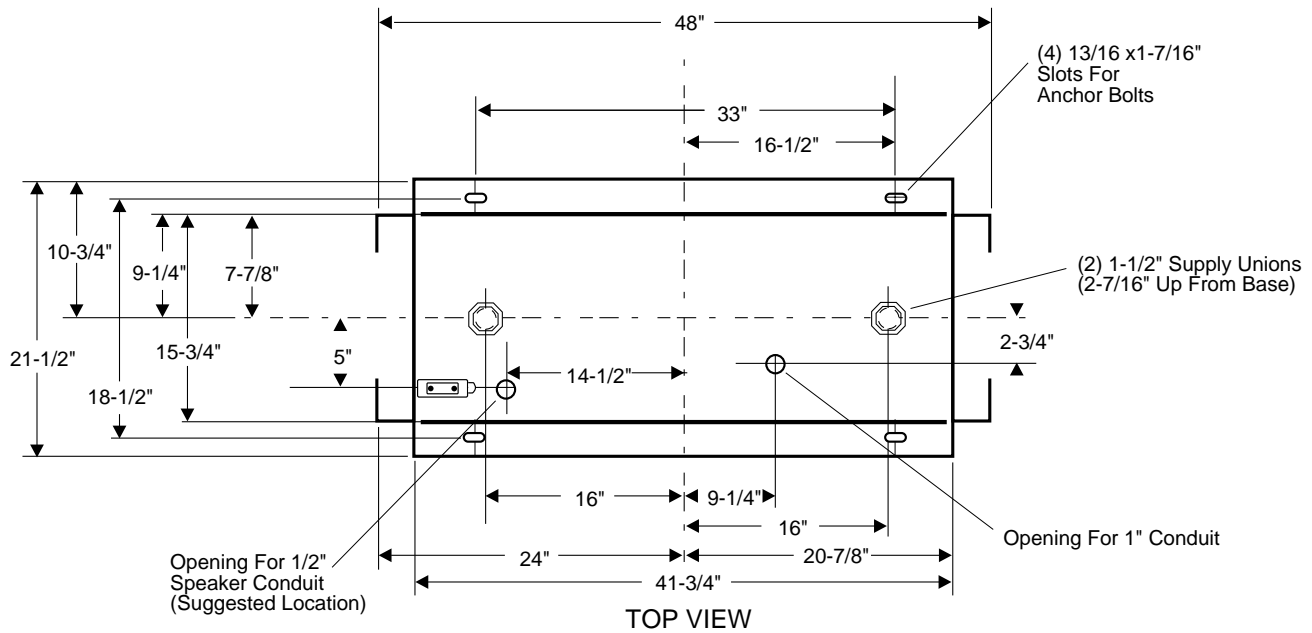
### Canopy Option

Front Surface: 9.5" H x 53.81" W

Side Surface: 9.5" H x 31.31" W

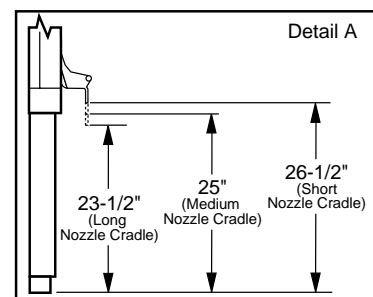
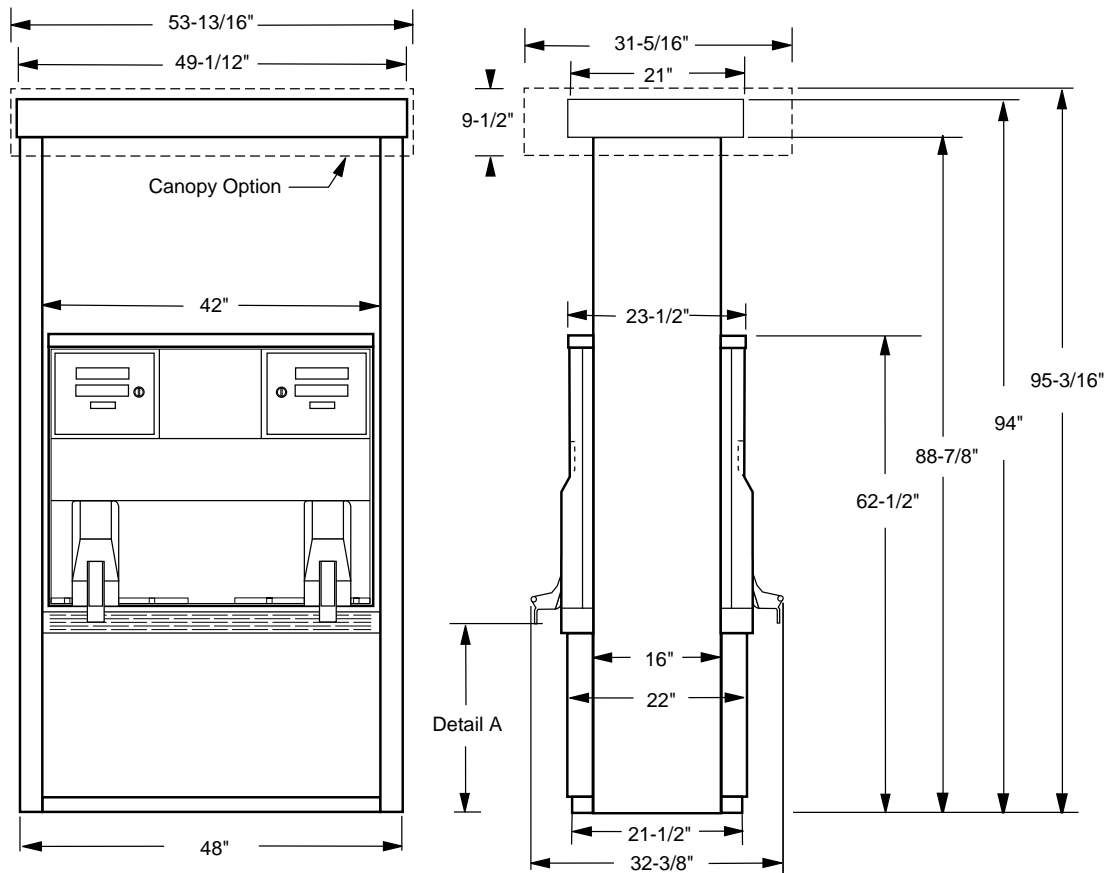
## Foundation Diagram • Models BB2 and BB3

### (4x4 Dispenser)



## Elevation Diagram • Models BC2 and BC3

(4x4 Pump)



### Screening Specifications

#### Lower Doors

Overall: 22.94" H x 49.74" W  
 Front Surface: 19.94" H x 42.25" W

#### Canopy Option

Front Surface: 9.5" H x 53.81" W  
 Side Surface: 9.5" H x 31.31" W

## Foundation Diagram • Models BC2 and BC3

(4x4 Pump)

