



**RED JACKET®**

## OVERHEAD HOSE RETRACTOR INSTALLATION INSTRUCTIONS (OTHER THAN GILBARCO H-III ELECTRONIC UNITS)

MODEL NO. 884-014-5 (6.5 ft. post) 5/8" or 3/4" Hose

MODEL NO. 884-018-5 (6.5 ft. post) 1" Hose

MODEL NO. 884-025-5 (6.5 ft. post) 5/8" or 3/4" Hose with M.D. Reel

The Red Jacket Overhead Hose Retractor Model is intended for use on electronic dispenser (other than Gilbarco Hill Series)\* or wherever a base mounted retractor is desired.

**IT IS THE RESPONSIBILITY OF THE INDIVIDUAL PERFORMING THE INSTALLATION TO COMPLY WITH ALL LOCAL CODES AND SAFETY REGULATIONS REGARDING GASOLINE AND VAPORS.**

### INSTALLATION

**CAUTION** Do not fasten the post to the electronic head (upper portion) for support.

1. Remove the lower panel(s) from the dispenser. Drill a 3/8" and a 3/4" hole in the post and drill one 3/8" mounting hole where the post can be solidly secured through the side frame. Use a spacer when required as shown in Figure 2 below. We recommend aluminum tubing as needed. Use care to avoid plumbing and electrical conduit.
2. Mount the angle clip by lagging into the curb the 3/8" lag bolt provided. Drill a 3/8" and a 3/4" hole in the post to secure to the angle clip using (1) 3/8" — 16 x 1" cap screw, (2) lockwashers, (1) flat washer, and nut as shown in Figure 3.
3. Mount the 3/8"—16 x 2 cap screw, (2) lockwashers, (1) flat washer, (spacer) and (1) nut into the side as shown in Figure 2.
4. Cover the post holes with the capplugs provided.

### HOSES AND SWIVELS

A 5/8" or 3/4" I.D., U.L. Listed gasoline hose, up to 17 ft. long is typically used on Model 884-014.\*\*

A 1" I.D., U.L. Listed gasoline hose, up to 15 ft. long is typically used on Model 884-028.\*\*

\*\*Hose length referenced is based on standard softwall hose. Mounting configuration, hose type and climate may affect flexibility of hose. (Retractors for use with 5/8" or 3/4" I.D. hose are available with either standard or heavy-duty reels.)

1. Slip the hose into the clamp provided and adjust until the bottom of the loop clears the curb. See Figure 1 below. Tighten securely.
2. Pull the hose to its full length. It should extend easily and then retract completely.
3. If adjustment is required in spring tension, remove the (4) screws from the cover, extend cable approximately 18", wind or unwind one turn at a time and repeat step 2.

\*Special Bracket No. 009-246-1 & instructions required for mounting to this series.

FIGURE 1

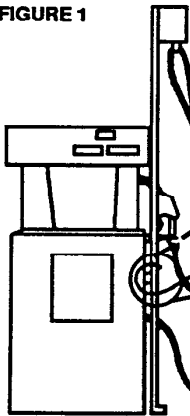


FIGURE 2

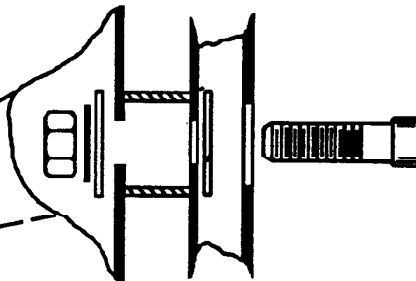
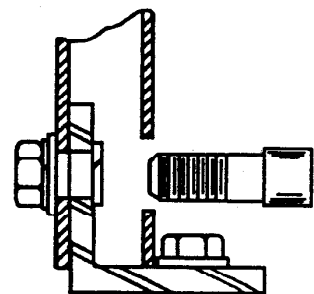


FIGURE 3



**REDJACKET®**

by **VEEDER-ROOT**

125 Powder Forest Drive • Simsbury, CT 06070  
Tel: (860) 651-2700 • Fax: (860) 651-2719

041-774 Rev. E