

Highline™ Standard Gallonage Dispenser

Model No.	Description
AC4921A	Highline 111B Single One-Product Dispenser
AC5921A	Highline 111B Dual One-Product Dispenser
AC6921A	Highline 111B Dual Two-Product Dispenser

Note: Highline Salesmaker™ models with lane oriented putdowns have an "-S1" model # suffix.

Load Table

See attached wiring diagrams:

FE-133E Highline Dispenser 110/115/120 VAC and 220/230/240 VAC

Operating Environment

Relative Humidity 20% to 95% non-condensing
Minimum Outside Ambient Temperature -22°F (-30°C)
Maximum Outside Ambient Temperature 104°F (40°C)

Performance Requirements

Minimum Delivery Rate 10 gpm @ 35 psi inlet pressure
..... (38 lpm @ 102 kglcm² inlet pressure)
Meter Accuracy ± .25% from 1.5 to 15 gpm (5.7 to 57 lpm)

Weights

Highline 111B or Highline Salesmaker Single One-Product

Dispenser Weight 280 pounds/126 kilograms

Highline 111B or Highline Salesmaker Dual One-Product

Dispenser Weight 335 pounds/151 kilograms

Highline 111B or Highline Salesmaker Dual Two-Product

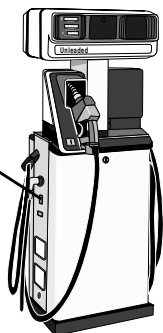
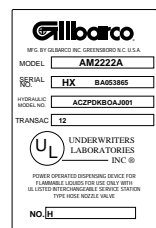
Dispenser Weight 310 pounds/140 kilograms

Model Number Breakdown • Hydraulics

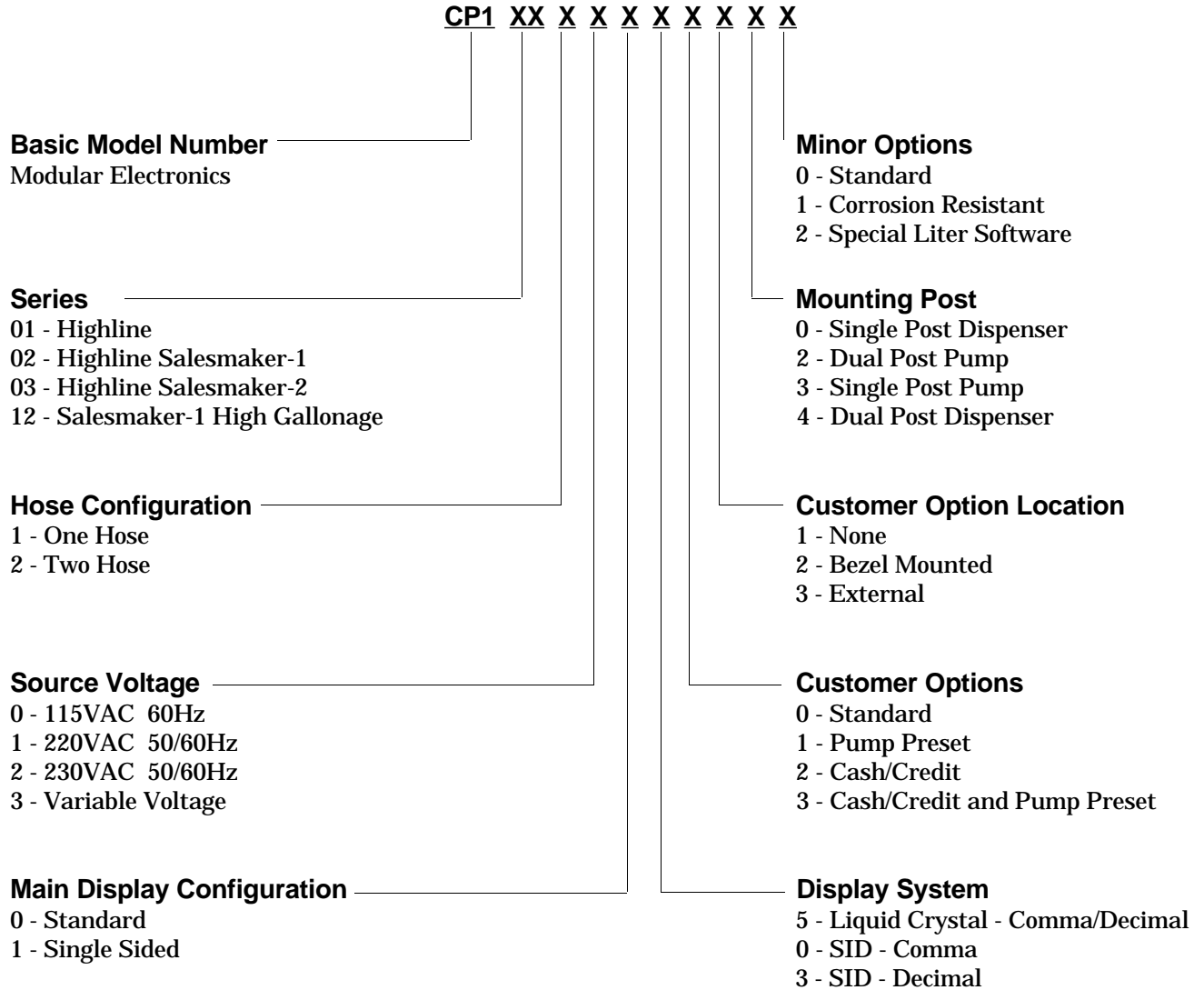
AC X X X X X X XXXXX

- A. U.S. _____
- C. Electronic Pump or Dispenser _____
- B. Highline™ Series _____
- F. International Highline Series _____
- A. Dispenser, Standard Gallonage _____
- B. Pump, Standard Gallonage _____
- C. Dispenser, Conventional High Gallonage _____
- D. Pump, Conventional High Gallonage _____
- E. Dispenser, Conventional High Gallonage Master (for satellite) _____
- F. Dispenser, Satellite (less CD module) _____
- G. Pump, PUS High Gallonage (with 1" piping) _____
- J. Pump, PUS Intermediate Gallonage (with 3/4" piping) _____
- K. Dispenser, Super-Hi™ High Gallonage Master (for satellite) _____
- L. Dispenser, Ultra-Hi™ High Gallonage Master (for satellite) _____
- M. Dispenser, Ultra-Hi Satellite (less CD module) _____
- N. Dispenser, Ultra-Hi™ High Gallonage Combo (with satellite) _____
- P. Pump, Standard Gallonage (with sump flow control) _____
- R. Pump, Conventional High Gallonage (with sump flow control) _____
- S. Dispenser, Conventional High Gallonage Combo (with satellite) _____
- T. Dispenser, Super-Hi™ High Gallonage Combo (with satellite) _____
- 2. Pump, PUS Intermediate Gallonage (with 3/4" piping and sump flow control valve) _____
- A. Single Product _____
- B. Dual One-Product _____
- C. Dual Two-Product _____
- D. Dual One-Product (rotated nozzle putdowns) _____
- G. Single Product (rotated nozzle putdowns) _____
- B. U.S. Gallons Totalizers, Vapor Recovery Nozzle Hook and Boot _____
- K. Metric Totalizers, Vapor Recovery Nozzle Hook and Standard Boot _____
- G. Metric Totalizers, Standard Nozzle Hook and Vapor Recovery Nozzle Boot _____
- N. Imperial Gallons Totalizers, Vapor Recovery Nozzle Hook and Standard Boot _____
- A. Fillup _____
- B. Preset _____
- A. First Major Revision _____
- M. Universal Hydraulics (value analyzed) _____

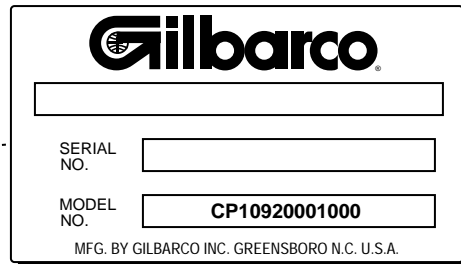
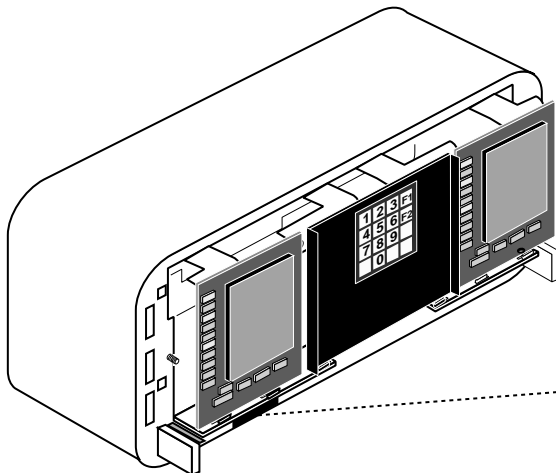
Reference _____



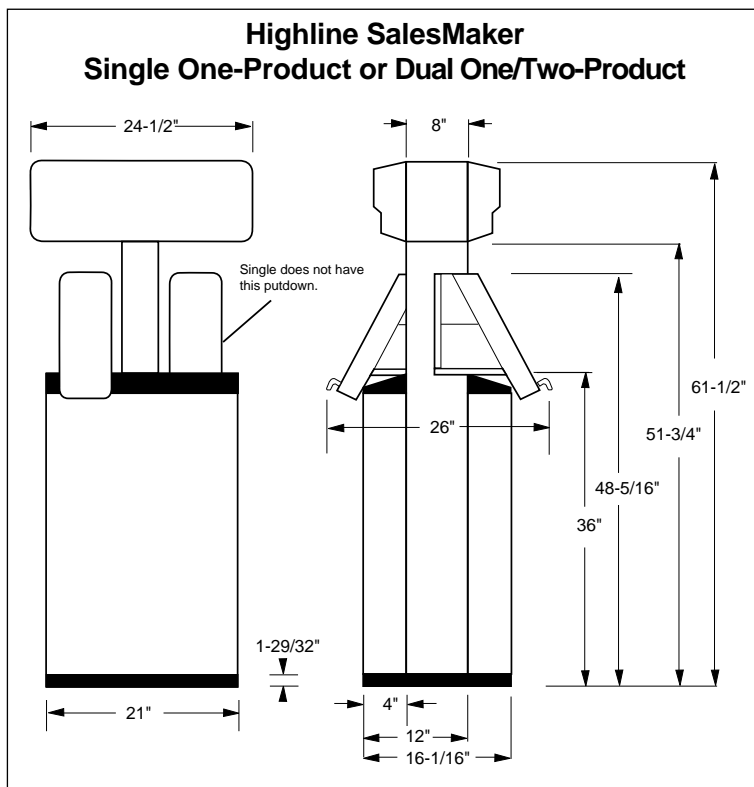
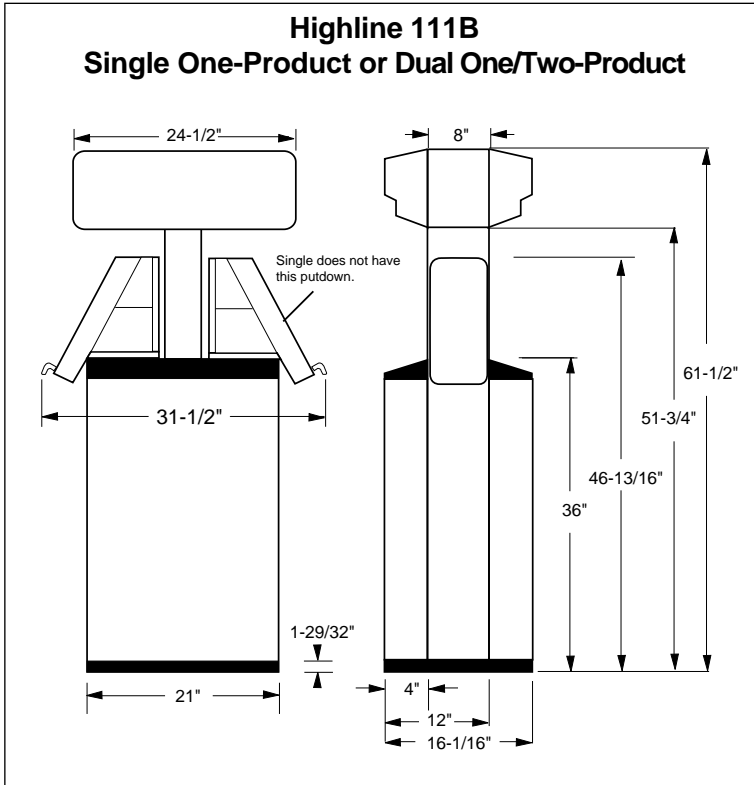
Model Number Breakdown • Electronics



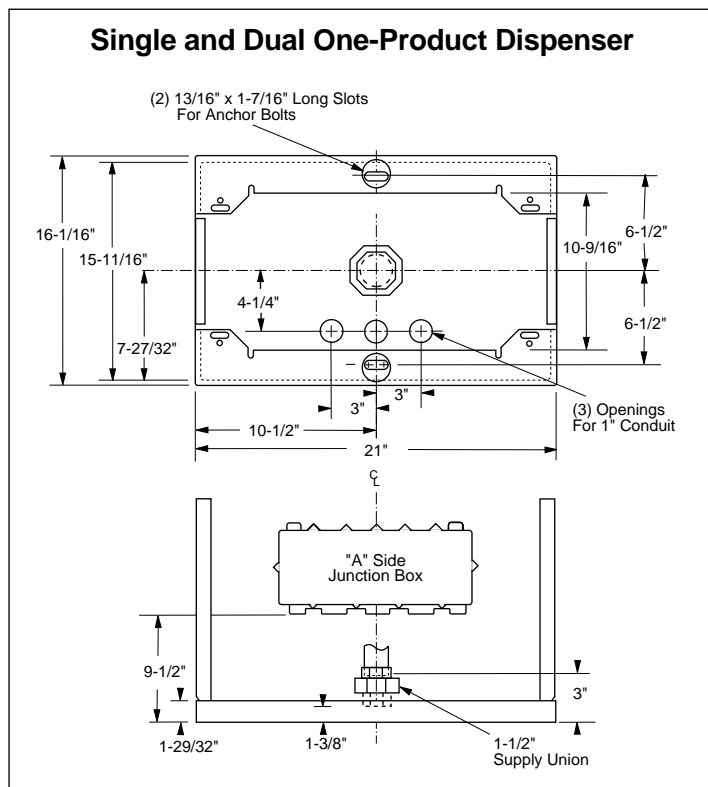
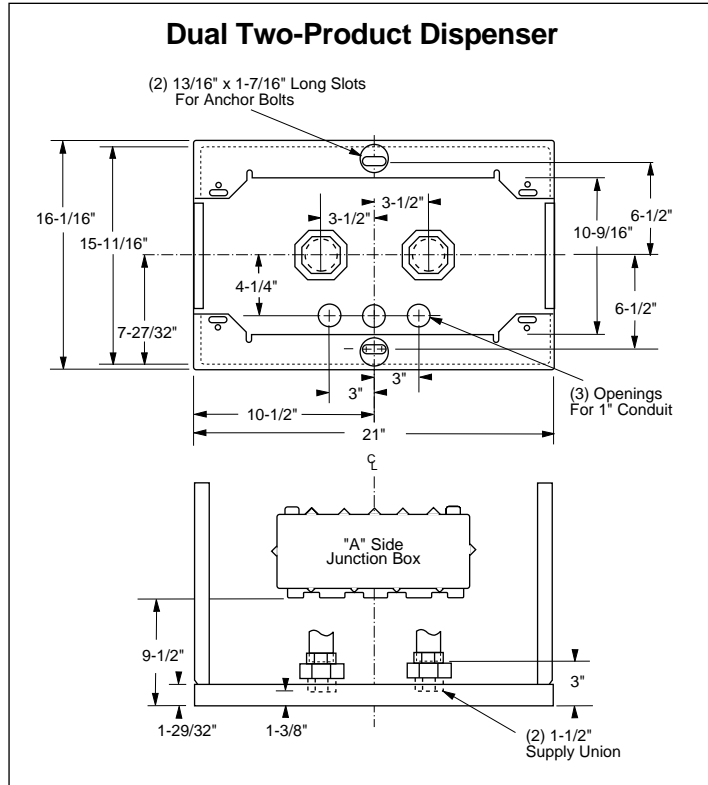
Thirteen digit electronics model number is stamped on plate attached to bottom of electronics module.



Highline™ (21" Frames)



Highline™ (21" Frames)



Highline™ Salesmaker™ -2

