

The Advantage® Selectable Blender Dispenser

Available Models and Weights

Models	Description	Weight
Selectable Blender 36"		
B7E	3 + 0 (single-sided)	725 lbs./326 kgs.
B78	3 + 0 (two-sided)	
B7N	4 + 0 (single-sided)	
B7K	4 + 0 (two-sided)	
B7G	5 + 0 (single-sided)	
B7A	5 + 0 (two-sided)	
Selectable Blender 48"		
B7F	3 + 0 (single-sided)	940 lbs./423 kgs.
B79	3 + 0 (two-sided)	
B70	4 + 0 (single-sided)	
B7L	4 + 0 (two-sided)	
B7H	5 + 0 (single-sided)	
B7B	5 + 0 (two-sided)	
B7I	3 + 1 (single-sided)	
B7C	3 + 1 (two-sided)	
B7P	4 + 1 (single-sided)	
B7M	4 + 1 (two-sided)	
B7J	5 + 1 (single-sided)	
B7D	5 + 1 (two-sided)	

Load Table

Field Wiring Diagram (Attached)	Voltage Rating
FE-270	110/115/120VAC

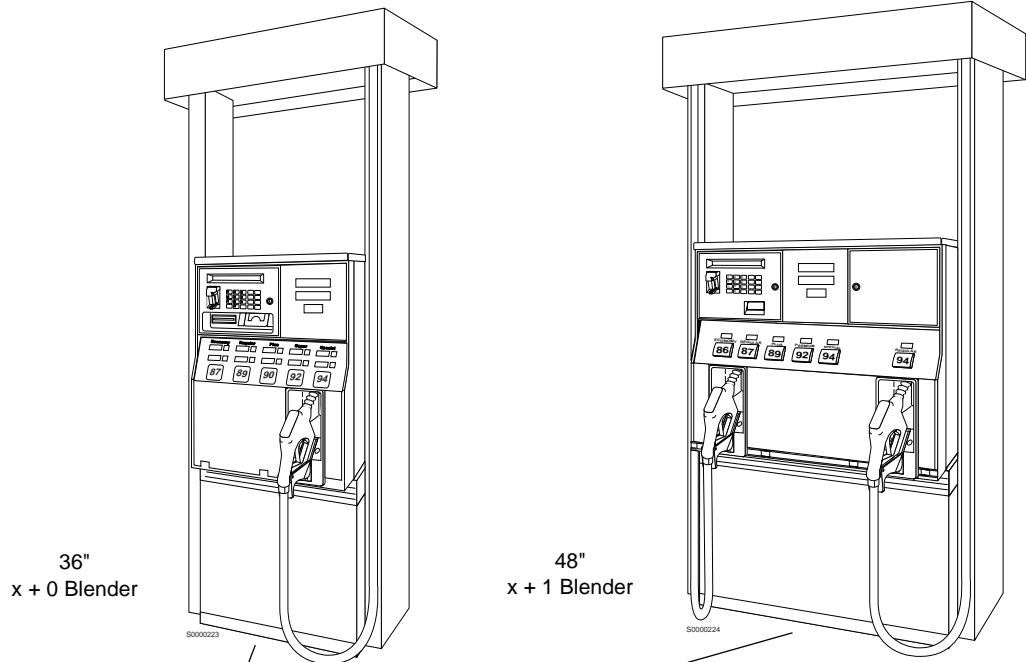
Operating Environment

Environment	Range
Relative humidity	20% to 95% non-condensing
Minimum outside ambient temperature	-22°F (-30°C)
Maximum outside ambient temperature	131°F (55°C)

Model Number Breakdown

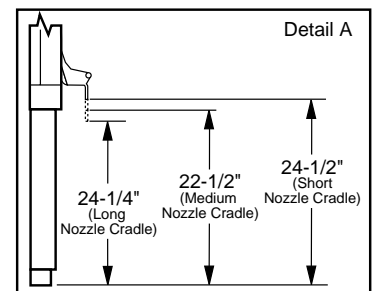
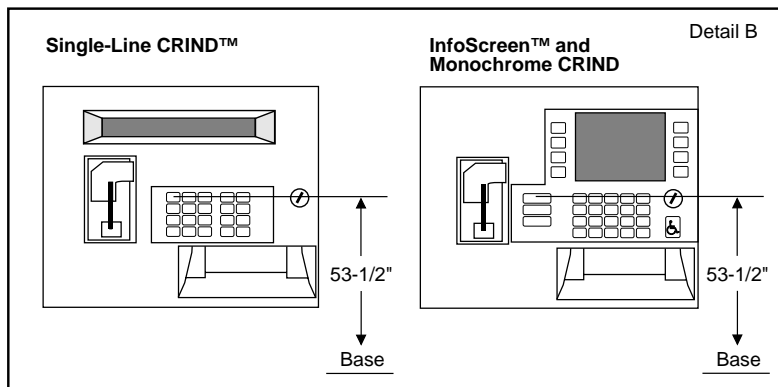
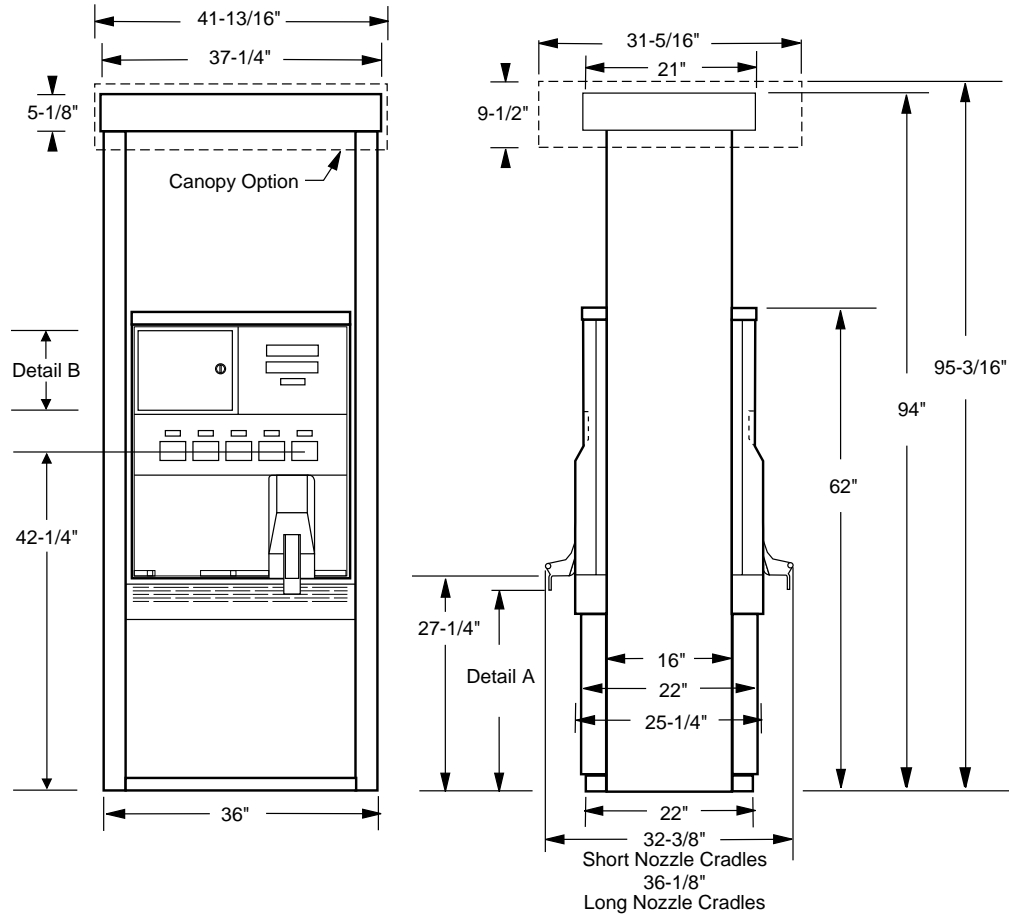
<p>Product _____ B X X</p> <p>B- The Advantage® Series</p> <p>Family Member _____</p> <p>7 - Selectable Blender Dispenser</p> <p>Configuration _____</p> <p>8 - 3 + 0 blender, 36", 2-side 9 - 3 + 0 blender, 48", 2-side A - 5 + 0 blender, 36", 2-side B - 5 + 0 blender, 48", 2-side C - 3 + 1 blender, 48", 2-side D - 5 + 1 blender, 48", 2-side E - 3 + 0 blender, 36", 1-side F - 3 + 0 blender, 48", 1-side G - 5 + 0 blender, 36", 1-side H - 5 + 0 blender, 48", 1-side I - 3 + 1 blender, 48", 1-side J - 5 + 1 blender, 48", 1-side K - 4 + 0 blender, 36", 2-side L - 4 + 0 blender, 48", 2-side M - 4 + 1 blender, 48", 2-side N - 4 + 0 blender, 36", 1-side O - 4 + 0 blender, 48", 1-side P - 4 + 1 blender, 48", 1-side</p>	<p>Options</p> <p>Push-To-Start Nozzle Lever Activated Nozzle CRIND™ Card Reader ¹ Cash Acceptor ¹ Customer Programmable Preset ¹ Cash/Credit Pricing Full Vapor (Balance System) ² VaporVac® Vacuum Assist ² Mechanical Gallon Totalizers Mechanical Metric Totalizers Mechanical Imperial Totalizers Unlit Brand Panel Lighted Brand Panel Backlit Brand Panel Light Conduit (Canopy) Speaker Hose Retriever</p>
--	--

¹ Cannot have both CRIND Card Reader and/or cash acceptor and Customer Programmable Preset.
² Not available on Super-Hi models.



Elevation Diagram • Models B78, B7A, B7E, B7G, B7K, and B7N

(Selectable Blender 36" Dispenser)



Note:
Gilbarco VaporVac®
and some Balance Vapor Recovery units
use short nozzle cradles.

Screening Specifications

Lower Doors

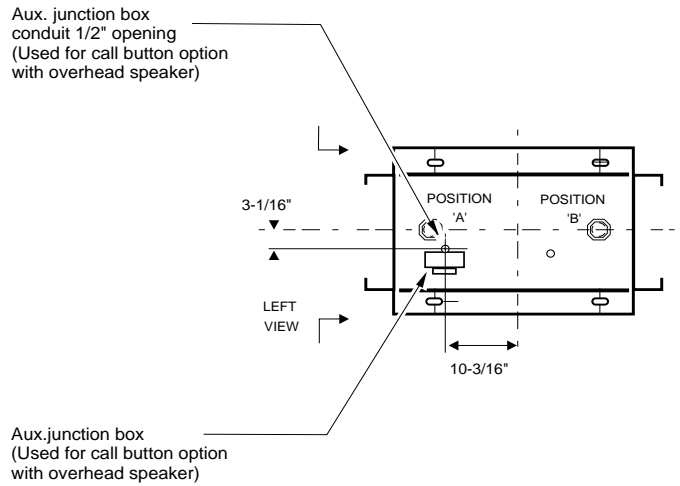
Overall: 22.94" H x 37.74" W
Front Surface: 19.94" H x 30.24" W

Canopy Option

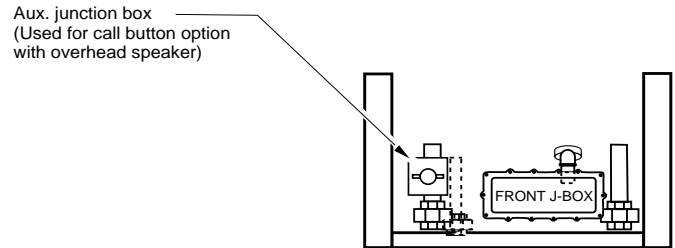
Front Surface: 9.5" H x 41.81" W
Side Surface: 9.5" H x 31.31" W

Optional Conduit Locations
 (See Standard Conduit Location drawing for all standard conduit locations.)

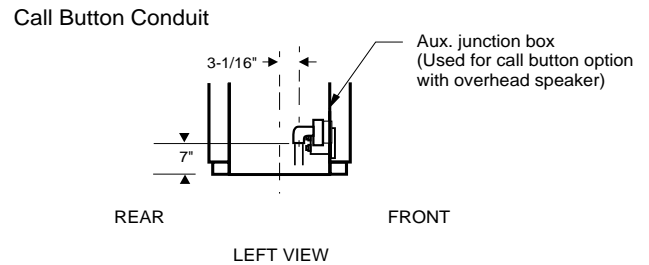
TOP VIEW



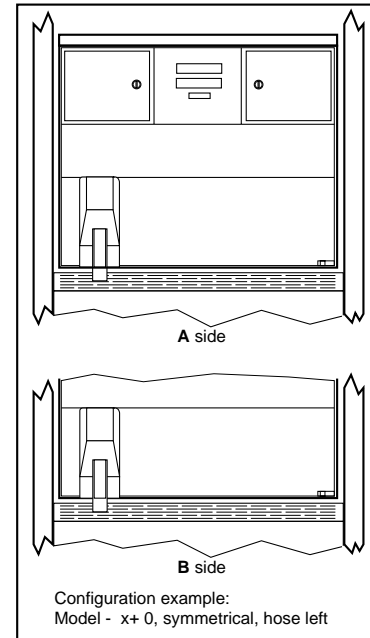
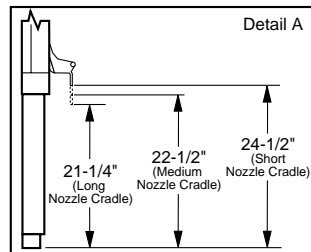
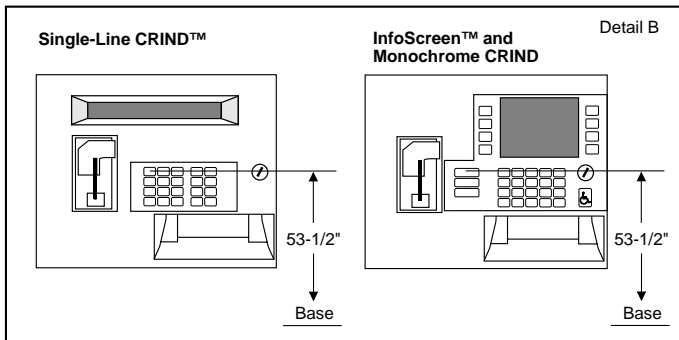
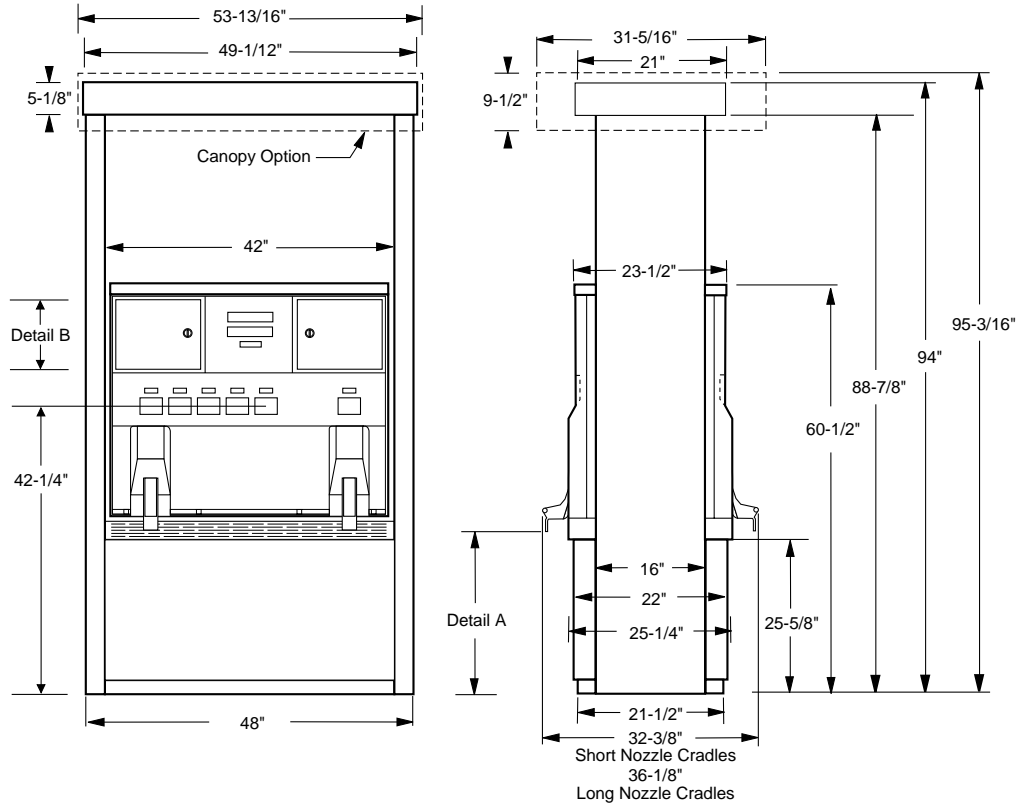
FRONT VIEW



SIDE VIEW OF COLUMN



**Elevation Diagram • B79, B7B, B7C, B7D, B7F, B7H, B7I, B7J, B7L, B7M, B7O and B7P
(Selectable Blender 48" Dispenser)**



Screening Specifications

Lower Doors

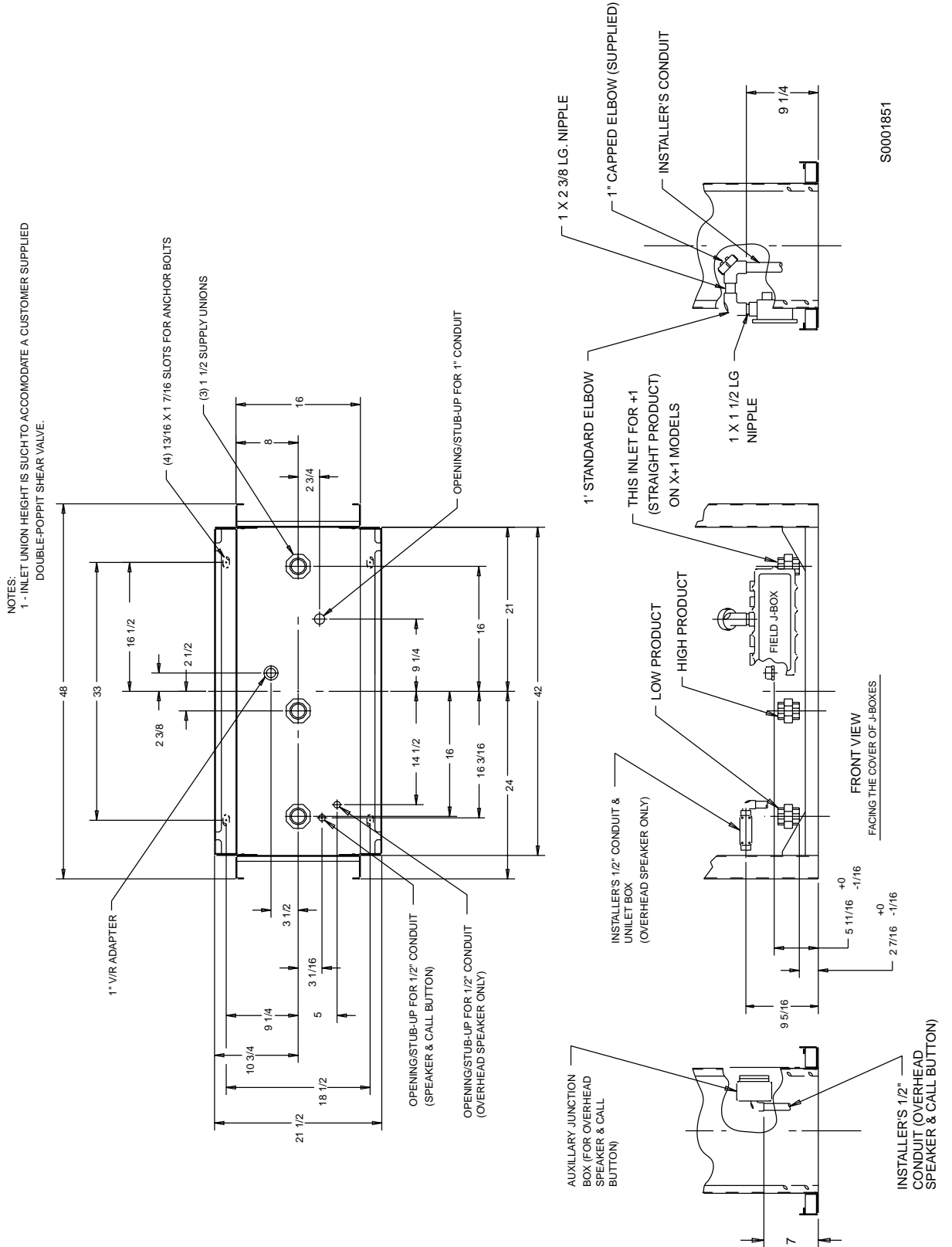
Overall: 22.94" H x 49.74" W
Front Surface: 19.94" H x 42.25" W

Canopy Option

Front Surface: 9.5" H x 53.81" W
Side Surface: 9.5" H x 31.31" W

Note:
Gilbarco VaporVac®
and some Balance Vapor Recovery units
use short nozzle cradles.

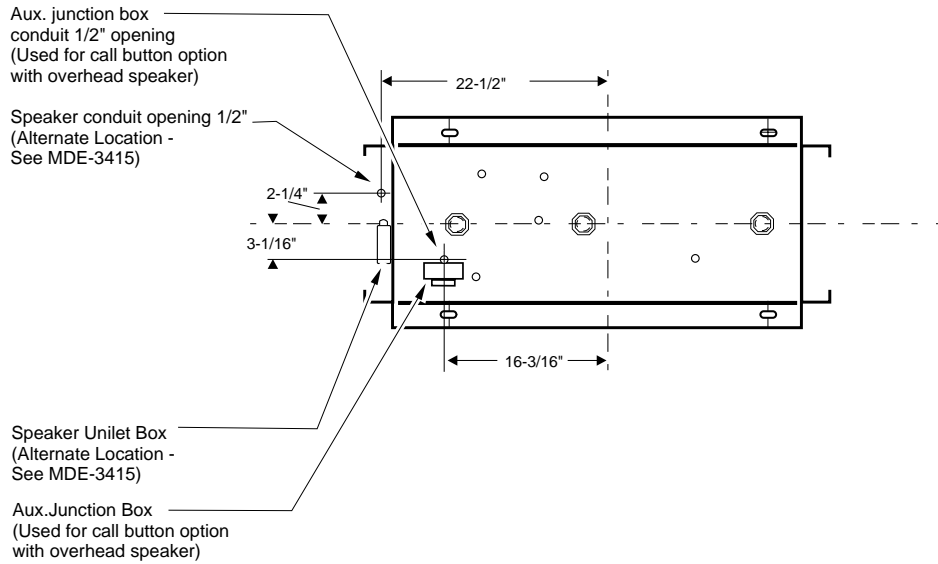
Foundation Diagram • B79, B7B, B7C, B7D, B7F, B7H, B7I, B7J, B7L, B7M, B7O and B7P
(Selectable Blender 48" Dispenser)



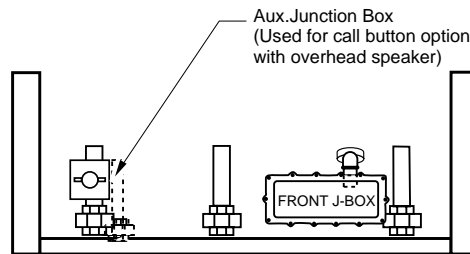
S0001851

Optional Conduit Locations
 (See Standard Conduit Location drawing for all standard conduit locations.)

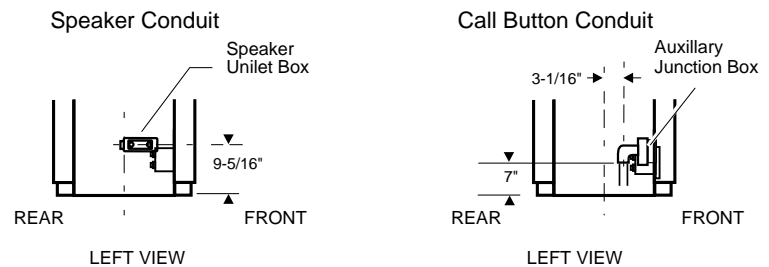
TOP VIEW



FRONT VIEW



SIDE VIEW OF COLUMN



(Alternate Column Location)
 See MDE-3415