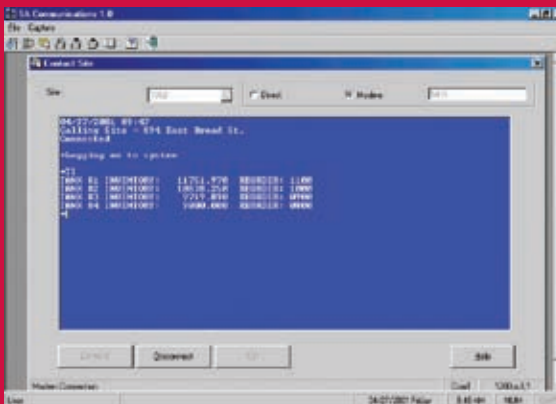


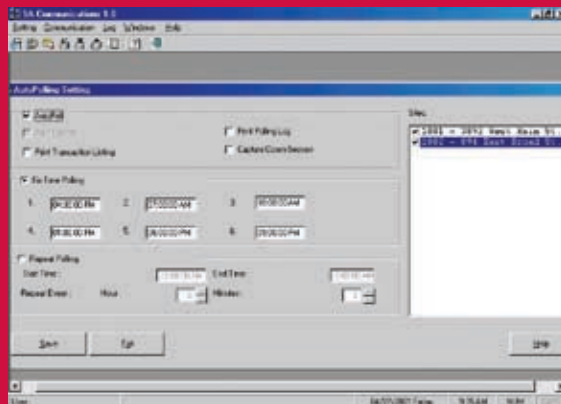
Gasboy PC/1000 for Windows® Software

Use Gasboy PC/1000 for Windows to create an interactive communications link between your PC and your Gasboy 1000 or FleetKey fuel management systems at your fueling sites. Easily communicate with one or an unlimited number of Series 1000 or FleetKey systems. Site communication is accomplished simply through direct hard wiring from the PC comm port to your 1000 system, or through telephone modem communication. The software is designed as a single desktop application and is compatible with Microsoft Windows 95, 98, 2000, ME, or NT 4.0 Workstation operating systems.

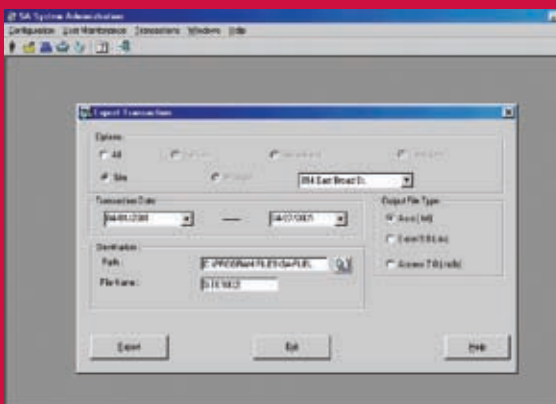
Site Communication: Use your PC to easily initiate site commands for reports, file maintenance, etc.



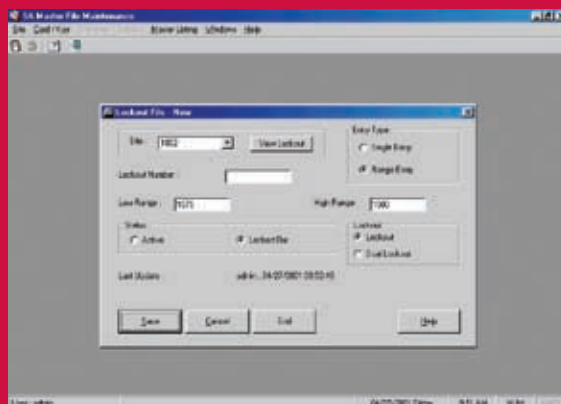
Automatically Poll Fuel Transactions: Let an unattended PC automatically gather your fuel transactions.



Create Export Files: Generate a flat ASCII file of fuel transactions for export to your reporting package of choice, or select a format compatible with Microsoft Access or Excel



Download Fuel Site Access Changes: Centralize the changes of authorized drivers or other lockout fields and automatically download to your Series1000 or FleetKey sites.



Features and Benefits

Site Communication

Use your PC to easily run site commands for reports, file maintenance, etc. Simply select the site number and click on the "Connect" button. Once connected, you can initiate any Series 1000 or FleetKey site commands to:

- Display/Print Site Reports
- Fueling Transactions
- Tank Inventory
- Pump Totalizers
- Lockouts
- System parameters
- Configure System Parameters
- Perform Site File Maintenance

Match Your Site Setup

At system setup, match the site files in your PC/1000 software to the options and communication parameters (direct or modem connection, phone number, baud rate, etc.) of each of your sites. From then on, execute site communication automatically by just selecting the site and clicking "connect."

Automatically Poll Fuel Transactions

Collect fuel transactions from one or multiple Series 1000 or FleetKey sites automatically up to six different times per 24-hour period, or set the system for repeat polling at an hour and minute frequency you designate. You have the option to poll fuel sites any time on demand. Polled transactions are automatically processed and stored in the software's database until purged.

Automatically Execute site Commands

Optionally designate up to ten site commands to be performed automatically during polling and capture the results to a file (e.g.; tank inventory, pump totalizers, etc.).

Export File of Fuel Transactions

Generate a flat ASCII file of polled fuel transactions for export to other applications for creating custom or multi-site reports (third party fleet maintenance packages, spreadsheets, databases, etc.). Or, if you wish to create your own reports, you have the option to select an export file compatible with Microsoft Access or Excel.

Download Fuel Site Access Changes

Centrally change the lockout status (authorization to fuel) that is currently in the lockout file(s) in the Series 1000 or FleetKey systems at your fuel sites, and automatically download the changes to your sites at the time of polling or any time on demand. You can change the status individually or enter a range of numbers.

Installation Wizard

Quickly and reliably install the software through a standard Windows installation wizard.

User Interface

Easily navigate the software via a standard Windows user interface. A main page provides point and click access to the main software features. Additional features can be accessed via the individual menu bars, and icons for frequently used features, on each screen.

On-Line Help

Confused? Use the standard Windows on-line help system to facilitate use of the software.

Diagnostics

Troubleshoot communication problems with the option to capture the communication session to a file.

Password Protection

Prohibit access to the software through an optional single level password. Limit access to selected functions by user id.

PC Backup & Restore

Quickly backup your PC software files and safely restore if necessary.

MINIMUM SYSTEM REQUIREMENTS

Fuel Management System:

- GASBOY Series 1000 (v3 or higher) or FleetKey System PC:
- Microsoft Windows 95, 98, 2000, ME, or NT 4.0 Workstation with service pack 4 or higher
- Pentium or faster processor
- 16 MB RAM required; 32 MB recommended
- 60 MB hard disk space available
- Mouse
- CD-ROM
- Modem for dial-up connection or serial port and direct connect cable
- Windows-compatible printer

WARNING

Failure to follow these instructions may result in property damage, personal injury or loss of life. Gasboy products must be installed by a qualified installer and used in conformance with all building, fire and environmental codes and other safety requirements applicable to their installation and use, including, but not limited to, NFPA 30, NFPA 30A and NFPA 70. This product is only part of a fuel dispensing system and additional equipment and accessories, such as, but not limited to, breakaway connectors, shear valves, pressure regulators and other safety devices may be necessary to meet the applicable codes. Qualified installers shall be familiar with fuel system installations under the above stated building, fire and environmental codes and other safety requirements required for the particular type of installation. Gasboy dispensers shall not be used for the direct fueling of aircraft without filters, separators and other equipment necessary to ensure product purity. All sales subject to Gasboy standard warranty.

Windows, Microsoft Access, and Excel are trademarks of Microsoft Corporation. Pentium is a trademark of Intel Corporation.

