

TLS-2 SERIES (TLS-2, TLS-2P)



POWERFUL, RELIABLE, COMPACT AND COST EFFECTIVE

The Veeder-Root TLS-2P is ideal for retail and commercial site owners who need essential fuel inventory monitoring functionality.

Veeder-Root's TLS-2P Automatic Tank Gauge (ATG) is built on the reliable and field-proven TLS-2 System architecture with over 25,000 installations worldwide. The TLS-2P set up is intuitive and can easily be customized for unique site requirements.

Benefits

The TLS-2P feature set optimizes a site owner's operational efficiency and protects profits:

- **Web interface and enhanced communication capabilities**
- **Optimized integration into site operations**
- **Power-off delivery detection**
- **Fuel quality identification**

Web interface and enhanced communication capabilities

TLS-2P web interface and email notification features allow site owners to stay on top of their business remotely. Site owners can receive operational messages in real time and take prompt actions.

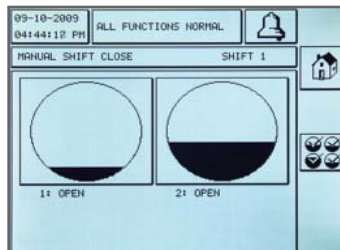
An internal Ethernet port enables the TLS-2P to seamlessly integrate into any LAN or WAN. The TLS-2P console supports static and dynamic TCP/IP addresses.

Three serial ports and a USB are now simultaneously available. Site operators can use a standard USB

cable to transfer inventory data from the console to their PC for data management and printing. The three serial ports provide site owners flexibility to connect the console to external devices.

Optimized integration into site operations

Flexible Shift Closing feature includes both Timed Shift Closing and Manual Shift Closing.



The newly added Manual Shift Closing allows site operators to manually close a shift by individual tank without interrupting the other tanks' operation. The TLS-2P now offers great flexibility and accuracy in station shift management.

User-defined Inventory Snapshot

feature enables site operators to store up to 72 inventory records on the console to prevent sudden data loss. This helps the central office optimize fuel delivery management of any site within a network.

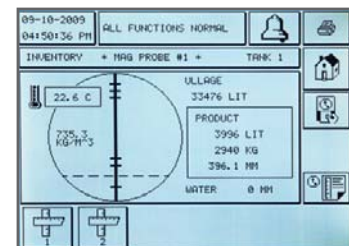


Power-off delivery detection

Power-off Delivery feature automatically detects, reports and stores deliveries that occur during a power outage. Once the power is restored to the console, the console can capture the inventory increase.

Fuel quality identification

Density/Mass Measurement is a feature of the MAG-D Density Probe. When combined with the TLS-2P, the Probe can continuously monitor in-tank fuel density (density range: 690-900kg/m³) at an accuracy of +/- 2.0 kg/m³.



TLS-2 SERIES (TLS-2, TLS-2P)

The TLS-2P offers all the features of existing TLS-2 within the same small footprint and also incorporates more robust inventory management features and communications. Backed by Veeder-Root's industry leading quality, reliability and service coverage, the TLS-2P offers petroleum site owners' competitive performance to price value.

TLS-2 Series Products (TLS-2, TLS-2P)

Specifications:

- Up to 6 tank monitoring capability
- Graphics touch screen display
- Audible alarms through built-in beeper
- Visual indicator on the front panel for alarm, warning and power
- Serial connection to point-of-sale, serial printer or external modem
- Output relay to connect to external overfill alarm
- Dimensions: 6.6" x 7.6" x 4" (167mm x 193mm x 101mm)
- Operating temperatures: 0°C to 40°C (32°F to 104°F)
- Humidity: 95% RH (non-condensing)
- Compatible with all Veeder-Root magnetostrictive probes
- Universal power supply
- Global safety approvals

Capabilities:

- In-Tank Leak Detection (0.1 and 0.2 GPH)
- High water warning and alarm
- Inventory, shift and delivery management
- Density and mass measurement
- Web interface for remote access, program and diagnosis
- Programmable email notification of alarms and events
- Dynamic TCP/IP push

Reports:

- User-defined inventory snapshot up to 72 records
- Power-off delivery history
- Manual shift closing
- Density/Mass inventory (Optional feature if ordered with Mag Density Probe)
- Current inventory level
- Automatic delivery
- Timed shift closing
- Tank leak test results
- Active alarm & alarm history
- Set-up and diagnostics

TLS-2 Series Part Numbers:

P/N	Description	P/N	Description
856060-060	TLS-2 Console (ATEX)	856020-060	TLS-2 Console (IECEX)
856060-064	TLS-2P Console (ATEX)	856020-064	TLS-2P Console (IECEX)
856090-060	TLS-2 Console (UL, cUL)	330020-662	TLS-2 Upgrade Kit to TLS-2P
856090-064	TLS-2P Console (UL, cUL)		

