



GASBOY

MODELS 2150A, 5200A, 5300A

PARTS MANUAL

035293

REV. 03/07/03

Copyright 2003 by Gasboy International LLC All rights reserved.
The information in this document is confidential and proprietary. No further disclosure shall be made without permission from Gasboy International LLC. Gasboy International LLC believes that the information in this document is accurate and reliable. However, we assume no responsibility for its use, nor for any infringements of patents or other rights of third parties resulting from its use. We reserve the right to make changes at any time without notice.

GASBOY INTERNATIONAL LLC LANSDALE, PA

IMPORTANT WARNINGS AND SAFEGUARDS

Gasoline and petroleum products are flammable. To avoid injury or death to persons or damage to equipment or property, follow these listed warnings and other warnings and precautions outlined in this manual when installing, using, or working around this equipment. Check with GASBOY Technical Services for compatibility of liquids with pump materials.

TURN OFF AND LOCK OUT ALL POWER TO PUMP BEFORE PERFORMING SERVICE, MAINTENANCE OR IN THE EVENT OF A FUEL SPILL.

All products must be installed by a qualified installer and used in conformance with all building, fire, and environmental codes and other safety requirements applicable to its installation and use, including, but not limited to, NFPA 30, NFPA 30A, NFPA 395 & NFPA 70. A qualified installer is familiar with fuel systems installations under the above stated building, fire, and environmental codes and other safety requirements for the particular type of installation.

This product is only part of a fuel dispensing system and additional equipment and accessories, such as, but not limited to, breakaway connectors, shear valves, pressure regulators, flow limiters, and other safety devices may be necessary to meet the applicable codes.

For maximum safety, we recommend that all employees be trained as to the location and procedure for turning off power to the entire system. Instructions regarding proper operation of the equipment along with the appropriate safety warnings should be posted in plain view at the fuel island.

Before performing service or maintenance (including changing of fuel filters or strainers) or in the event of a fuel spill, turn off and lock out all power to the system. In battery-powered pumps, disconnect power source. In submersible pump applications, turn off and lock out power at the master panel and close any impact valves to the submersible pump and any other dispensers which use that submersible pump. AC power can feed back into a shut-off dispenser when dispensers share a common submersible pump or starter relay. Also block islands so no vehicles can pull up to the dispenser when the dispenser is being worked on.

DO NOT use Teflon tape for any pipe threads in the product.

DO NOT use consumer pumps for pumping fuel or additives into aircraft.

DO NOT use commercial pumps for direct fueling of aircraft without filters and separators necessary to ensure product purity.

DO NOT use where sanitary design is required (for food products for human consumption) or with water-based liquids.

DO NOT smoke near the pump or when using the pump.

DO NOT use near open flame or electrical equipment which may ignite fumes.

DO NOT permit the dispensing of gasoline or other petroleum products into a vehicle with its motor running.

DO NOT permit the dispensing of gasoline or other petroleum products into unapproved containers or into approved containers in or on vehicles including trucks. All containers must be filled on the ground to prevent static discharge. Always use Approved and Listed hoses and nozzles with electric pumps and dispensers.

DO NOT block open the nozzle in any manner. Nozzles shall conform to UL and NFPA code requirements for attended or unattended service.

DO ensure that the pump is equipped with proper filters based on the product being dispensed and its intended use.

DO wear safety goggles and protective clothes when dispensing any liquid which may be potentially harmful or hazardous.

DO keep all parts of body and loose clothing clear of belts, pulleys, and other exposed moving parts at all times.

DO require washing and changing of clothes if fuel is spilled on a person or his/her clothing. Keep away from open flames, sparks, or people smoking.

DO provide a receptacle for catching product from pump/meter when servicing.

DO clean up product spills on the driveway. Turn off and lock out all power prior to cleanup.

DO insure pump is properly grounded.

DO insure hose is compatible with fluid being dispensed.

DO inspect hose, nozzle, and pump on a regular basis for wear, damage, or other conditions which may create a safety or environmental hazard.

DO make sure all pipe threads are properly cut and the inside reamed to remove burrs. Use UL classified gasoline-resisting compound on all joints of gasoline handling piping. Sealing compound must also be resistant to Gasohol (Ethanol and Methanol). Use gasoline-resistant pipe compound on male threads only; pipe compound used on female threads can be squeezed into the supply line where it can enter the product stream and become lodged in the pump or meter.

DO ensure that junction box covers are in place and properly tightened. Mating surfaces between the box and cover must be free of dirt, nicks, and scratches. All unused entries into the junction box must be properly plugged.

CONTENTS

Warnings and Safeguards

General.....	1
2150A, 5200A, 5300A Final Assembly - Front View	2
2150A, 5200A, 5300A Final Assembly - Side View.....	4
2150ARDX-1 Chassis - Front View	6
2150ARDX-1 Chassis - Side View	8
2150ARDX-2 Chassis - Front View	10
2150ARDX-2 Chassis - Side View	12
5200A-2, 5300A-2 Chassis - Front View	14
5200A-2, 5300A-2 Chassis - Side View	16
2150A Discharge Assembly - 024379	18
2150A Satellite Discharge Assembly - 045641	18
5200A Discharge Assembly - 024375; 5300A Discharge Assembly - 024376	19
5200A-1 & 5300A-1 Inlet Manifold Assembly - 035194.....	19
Flange Assembly	20
Electric Reset - S00206.....	21
Pumping Unit Assembly Breakdown	22
Meter Assembly Breakdown.....	24
Motor Mount Detail	26
Strainer Body Assembly	26

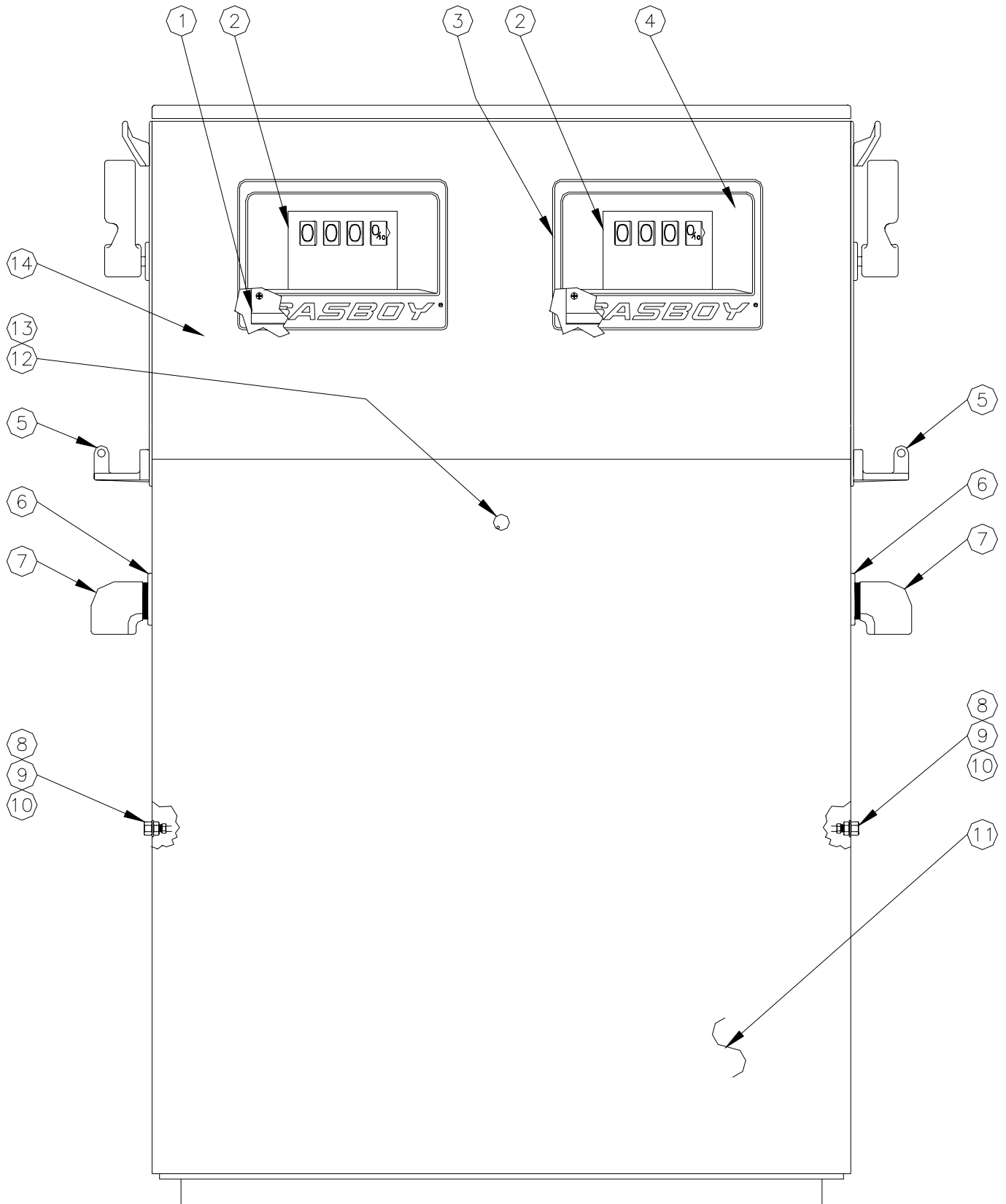
PARTS LIST

GENERAL

This manual lists parts information for the Model 2150A, 5200A and 5300A pumps and dispensers. Using part numbers when ordering will expedite your order and reduce the possibility of the wrong parts being shipped. When ordering replacement parts, be sure to give the complete name and part number as shown in the appropriate parts lists. It is also helpful to supply the serial number of the equipment.

This manual is arranged from general to specific, presenting the complete unit first, then the chassis breakdowns, then further breakdowns of the individual components. If you can't find the part you need from the chassis drawing, be sure to check the appropriate parts breakdown for your model.

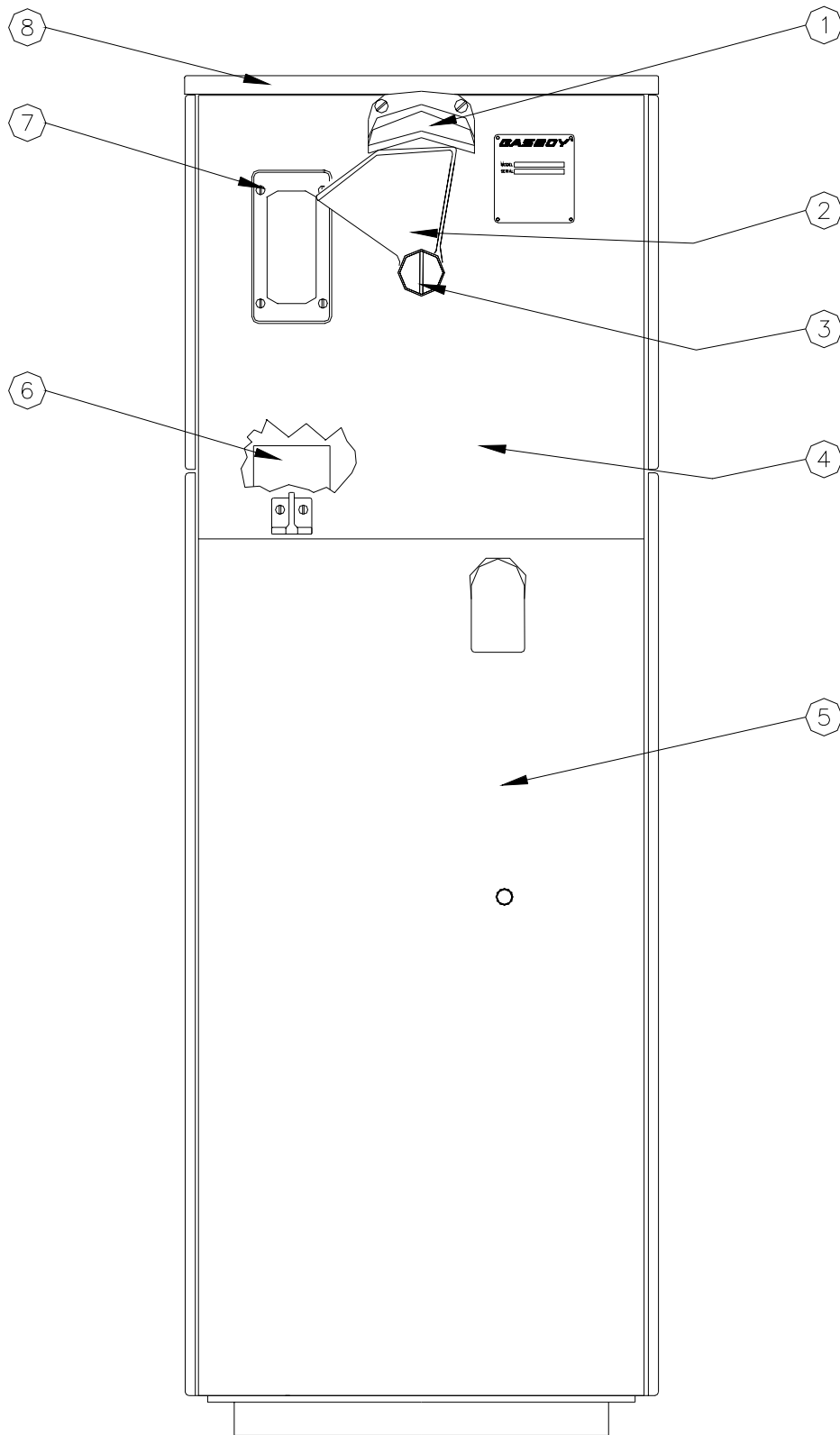
2150A, 5200A, 5300A FINAL ASSEMBLY - FRONT VIEW



2150A, 5200A, 5300A FINAL ASSEMBLY - FRONT VIEW

Item	Part No.	Description
1	025527	Dial Face, Non-Totalizer
	025542	Dial Face, Total Gallons
2		Dial Enclosure <i>(Part no longer available)</i>
3	012252	Bezel Assy.
4	069050	Window Glass
5	003745	Nozzle Hook
6	028960	Grommet
7	003620	Elbow, Discharge
8	026047	Fitting, 3/8 Ct Conn Inv Fl
9	067885	Washer, Fiber, 1/2 x 3/4 x 1/16
10	017921	Cap, Vent
11		Lower Panel Assy., CRS <i>(Part no longer available)</i>
		Lower Panel Assy., SS <i>(Part no longer available)</i>
12	026799	Gasket, Lock
13	035012	Lock, Door
14		Upper Panel Assy., CRS <i>(Part no longer available)</i>
		Upper Panel Assy., SS <i>(Part no longer available)</i>

2150, 5200A, 5300A FINAL ASSEMBLY - SIDE VIEW



2150, 5200A, 5300A FINAL ASSEMBLY - SIDE VIEW

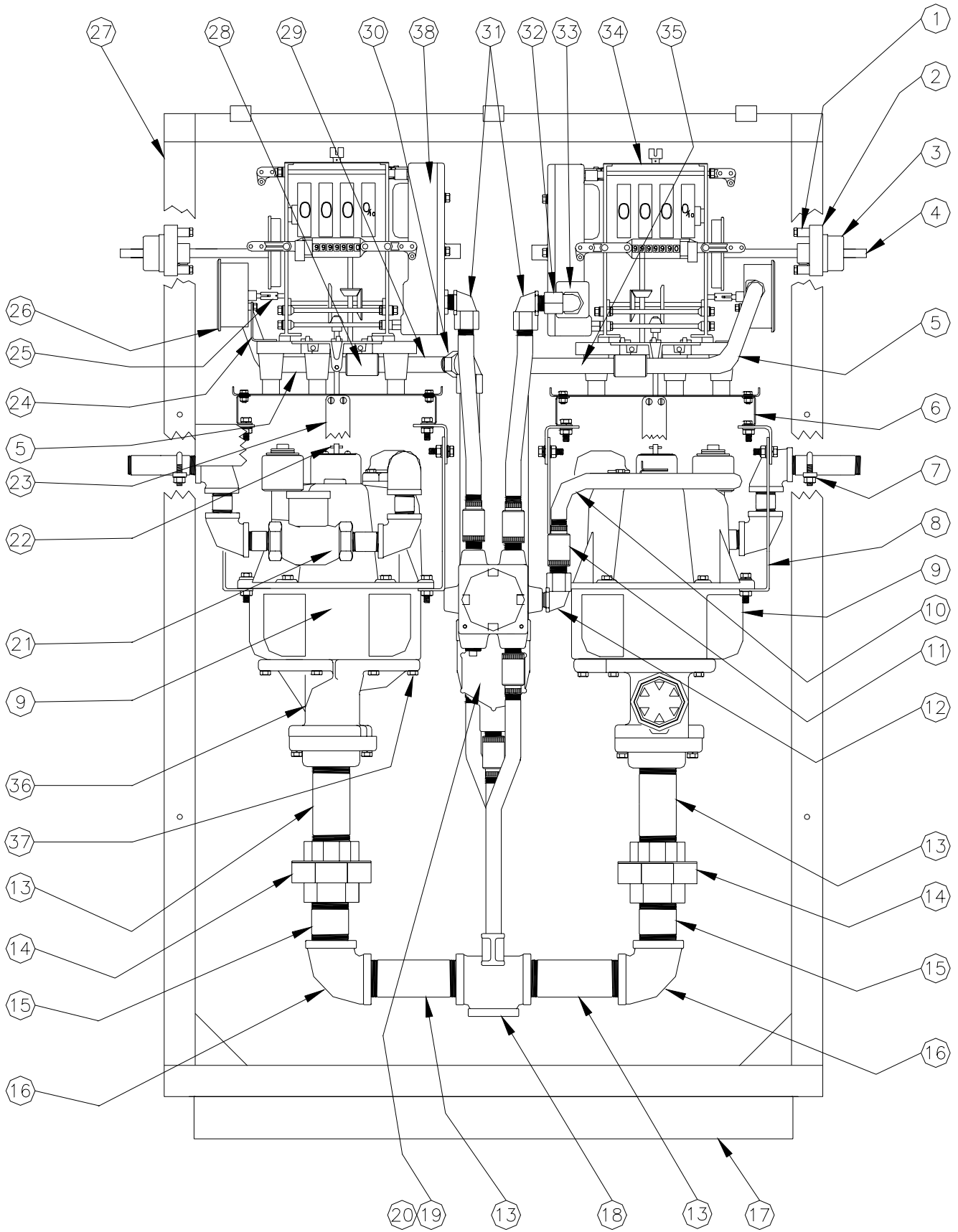
Item	Part No.	Description
1	003744	Hose Hook
2	033831	Control Lever
3	043105	Pin
4		Scuff Panel <i>(Part no longer available)</i>
5		Side Panel Weld Assy., CRS <i>(Part no longer available)</i>
		Side Panel Weld Assy., SS <i>(Part no longer available)</i>
		Side Panel Assy., Int. Retriever, CRS <i>(Part no longer available)</i>
		Side Panel Assy., Int. Retriever, SS <i>(Part no longer available)</i>
6	046765	Plate, Nozzle Backup
7	003332	Boot, Nozzle
8		Top Cover Assy., CRS <i>(Part no longer available)</i>
		Top Cover Assy., SS <i>(Part no longer available)</i>

NOTE: Pumps equipped with internal retrievers use the following parts (not shown):

Internal Retriever Parts - 047946

Item	Part No.	Description
1	040035	Cable Guide, Internal Hose Retriever
2	020712	Clamp, 1" Hose
3	048369	Reel and Cable
4	015022	Bracket, Internal Hose Retriever

2150ARDX-1 CHASSIS - FRONT VIEW

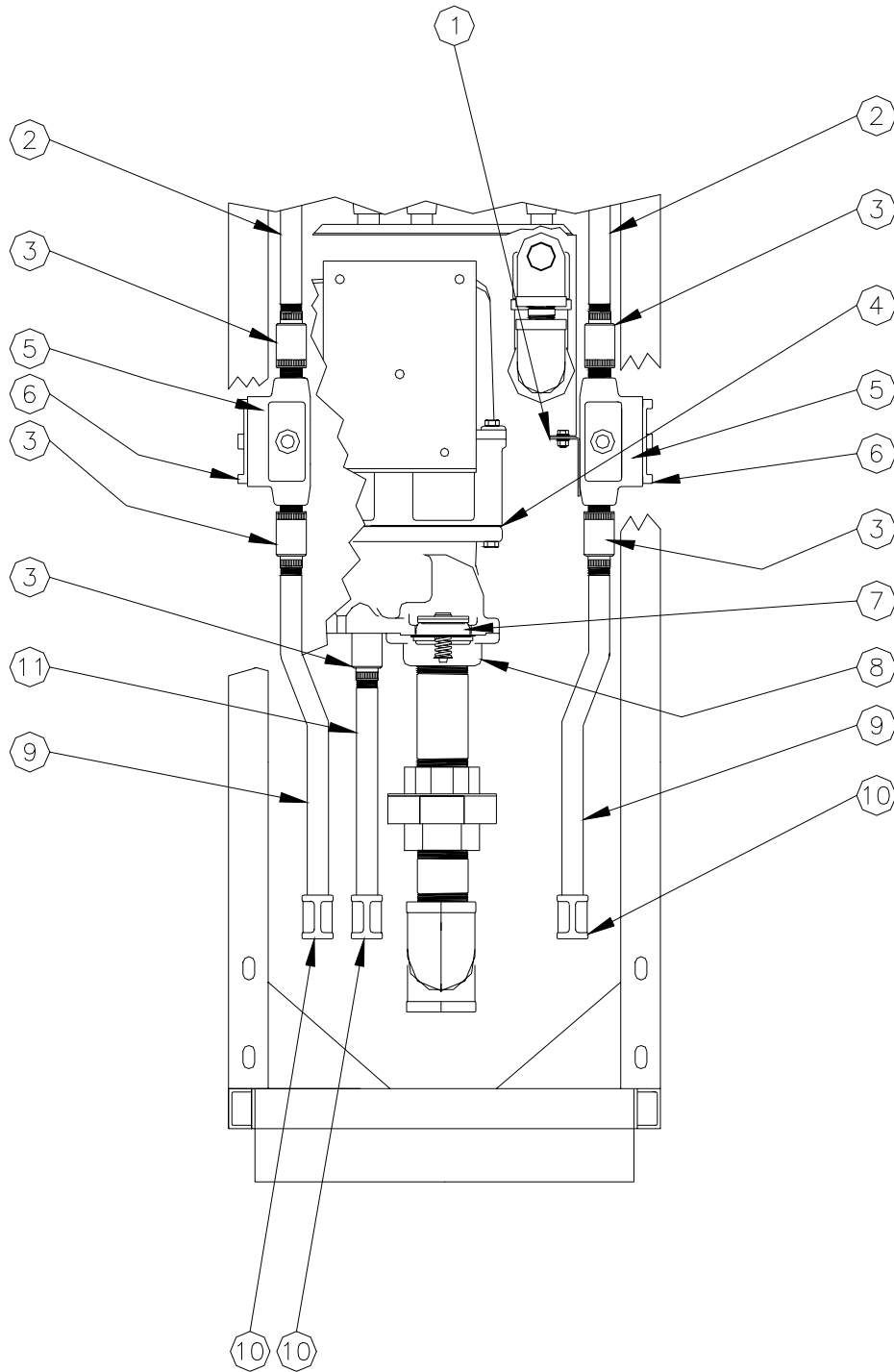


2150ARDX-1 CHASSIS - FRONT VIEW

Item	Part No.	Description
1	063215	Stop, Operating Shaft
2	015546	Bracket & Spring Assy.
3	003185	Bearing, Start Shaft
4	055675	Shaft, Start Assy.
5	021651	Conduit, Pulser
6	063963	Support, Computer
7	013295	U-Bolt, 1-3/8 ID
8	015043	Bracket, Meter Support, Non-Computer
9	035517	Meter, Gallons
	035576	Meter, Liters
10	021648	Conduit, 1" ITT Valve
11	066400	Union, Explosion-Proof Conduit
12	025045	Elbow
13	044933	Pipe, TBE, 1-1/2 x 4-3/4
14	066385	Union, 1-1/2 Stockham #150
15	038005	Pipe, TBE, 1-1/2 x 1-3/4
16	Z03555	Elbow, 1-1/2 x 90°
17	011680	Base Assy.
18	064811	Tee, Reducing 1-1/2 x 1-1/2 x 2
19	003337	Box, Junction
20	003461	Cover, Junction Box
21	024379	Discharge Pipe/Valve Assy. <i>(See Breakdown)</i>
	045641	Satellite Piping Assembly <i>(See Breakdown)</i>
22	042595	Pin, Drive-Lock, 1/8 x 5/8
23	021978	Coupling Half
24	015431	Bracket, Pulser, Gallon
25	021941	Coupling, Pulser
26	021788	Pulser, 10:1
	047648	Pulser, 100:1
27	026656	Frame
28	021986	Coupling, 1/2 Conduit
29	021652	Conduit, Pulser
30	025030	Elbow, Conduit 1/2 x 90° F/F
31	021685	Conduit & Electrical
32	024917	Potted Elbow
33	048370	Reducer, Conduit
34	021222	Non-Computer Assy., Electric Reset, w/o Top Drive, Gallons
	*020996	Non-Computer Assy. w/o Electric Reset
	021107	Non-Computer Assy., Electric Reset, w/o Top Drive, Liters
35	021650	Conduit, Pulser
36		Strainer Body Assy. <i>(See breakdown Strainer Body Assembly)</i>
37	052020	Screw, 3/8-16 x 1-1/4, HHC, GR-5
38		Electric Reset only <i>(See Breakdown)</i>

*Denotes this is a subpart used in the preceding assembly

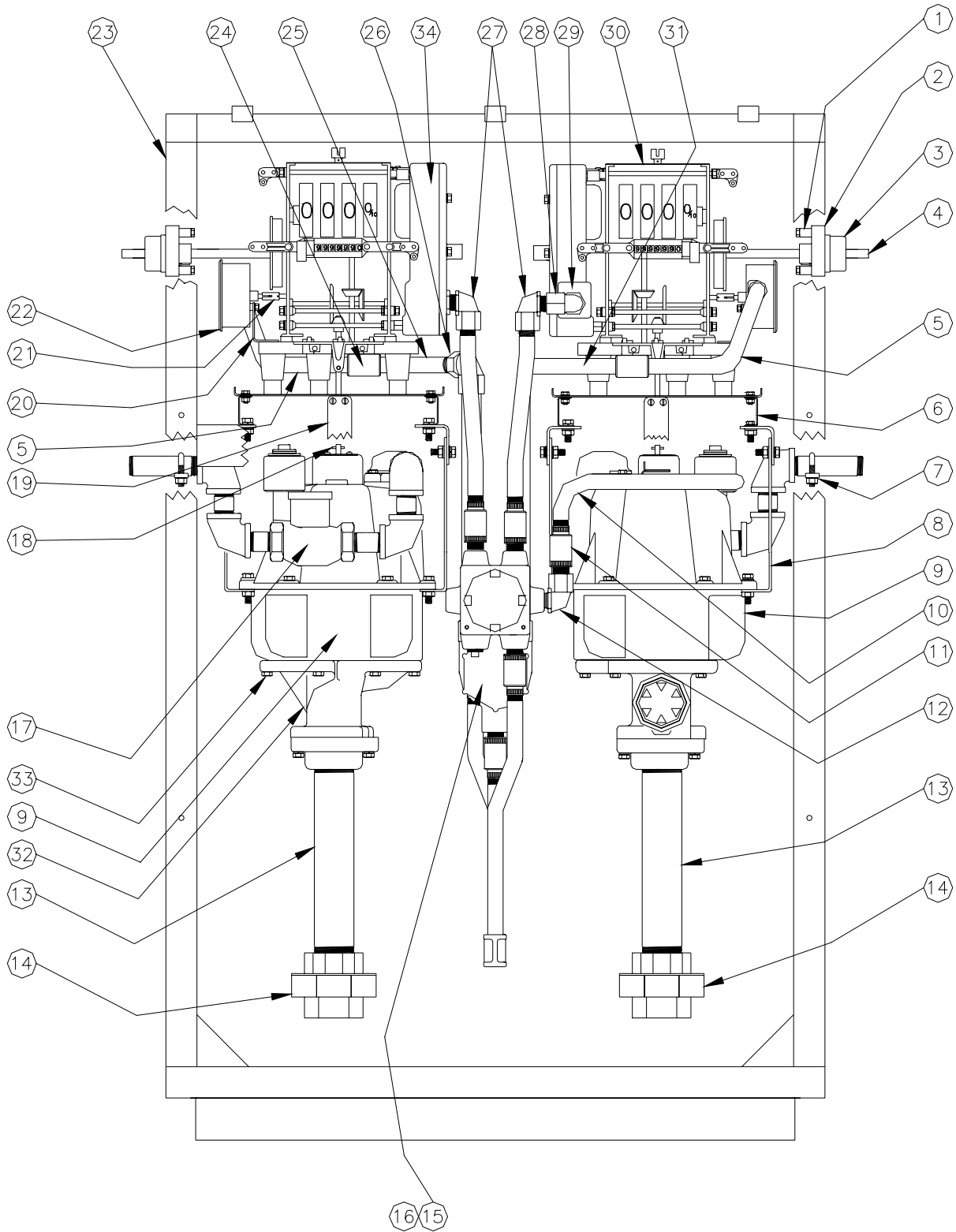
2150ARDX-1 CHASSIS - SIDE VIEW



2150ARDX-1 CHASSIS - SIDE VIEW

Item	Part No.	Description
1	015000	Bracket, Junction Box
2	021685	Conduit & Electrical
3	066400	Union, Explosion-Proof Conduit
4	027038	Gasket
5	003344	Junction Box
6	022140	Junction Box Cover Assy.
7		Check Valve Assy. (See breakdown Strainer Body Assembly)
8	048138	Valve Housing
9	021162	Conduit
10	021986	Conduit Coupling
11	021380	Conduit, 1/2 x 7-1/2

2150ARDX-2 CHASSIS - FRONT VIEW

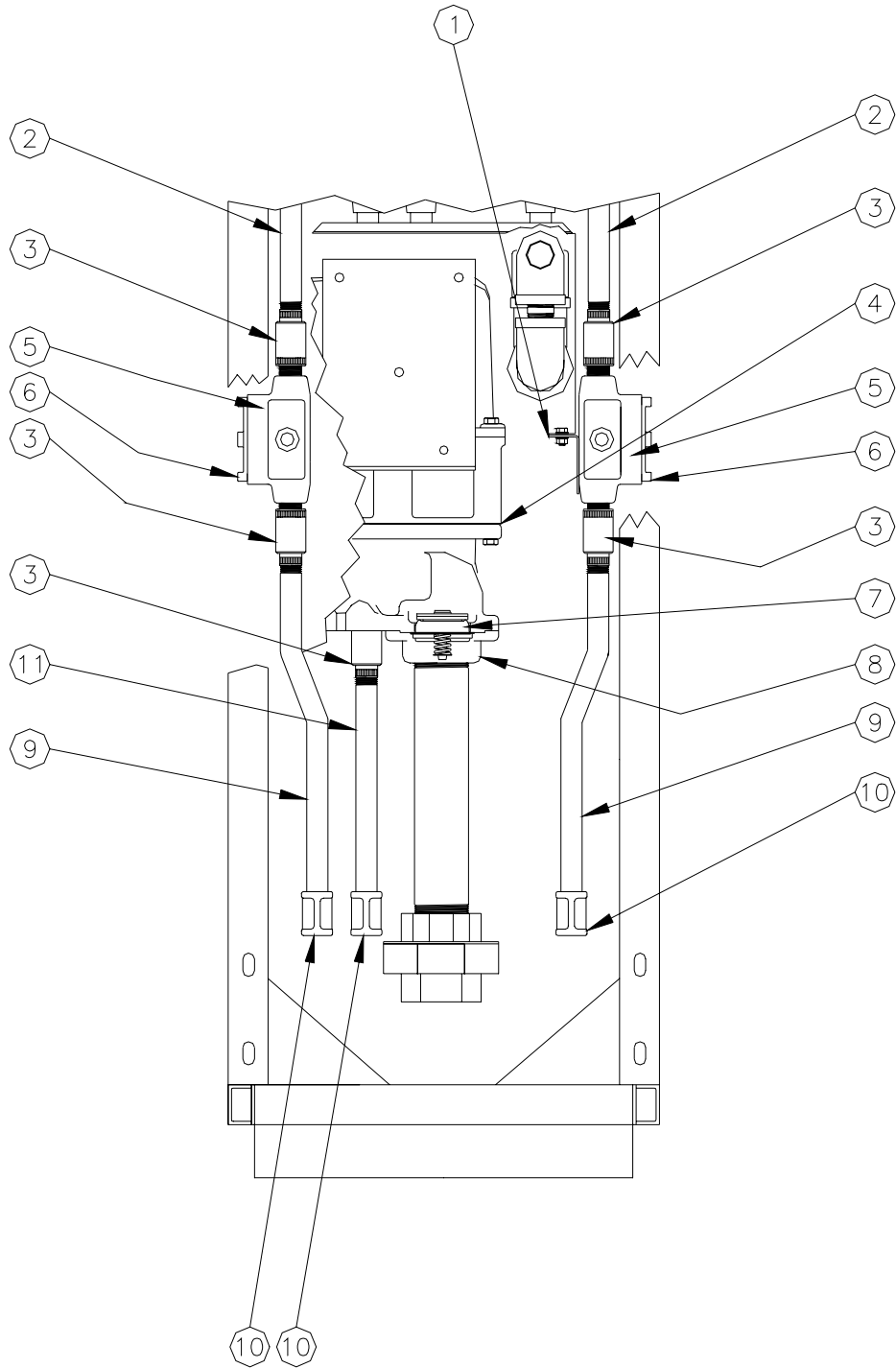


2150ARDX-2 CHASSIS - FRONT VIEW

Item	Part No.	Description
1	063215	Stop, Operating Shaft
2	015546	Bracket & Spring Assy.
3	003185	Bearing, Start Shaft
4	055675	Shaft, Start Assy.
5	021651	Conduit, Pulser
6	063963	Support, Computer
7	013295	U-Bolt, 1-3/8 ID
8	015043	Bracket, Meter Support, Non-Computer
9	035517	Meter, Gallons
	035576	Meter, Liters
10	021648	Conduit, 1" ITT Valve
11	066400	Union, Explosion-Proof Conduit
12	025045	Elbow
13	044903	Pipe, TBE 1-1/2 x 9-1/4
14	066385	Union, 1-1/2 Stockham #150
15	003337	Box, Junction
16	003461	Cover, Junction Box
17	024379	Discharge Pipe/Valve Assy. <i>(See Breakdown)</i>
	045641	Satellite Piping Assembly <i>(See Breakdown)</i>
18	042595	Pin, Drive-Lock, 1/8 x 5/8
19	021978	Coupling Half
20	015431	Bracket, Pulser, Gallon
21	021941	Coupling, Pulser
22	021788	Pulser, 10:1
	047648	Pulser, 100:1
23	026656	Frame
24	021986	Conduit Coupling
25	021652	Conduit, Pulser
26	025030	Elbow, Conduit 1/2 x 90° F/F
27	021685	Conduit & Electrical
28	024917	Potted Elbow
29	048370	Reducer, Conduit
30	021222	Non-Computer Assy., ERS, w/o Top Drive, Gallons
	*020996	Non-Computer Assy. w/o Electric Reset
	021107	Non-Computer Assy., ERS, w/o Top Drive, Liters
31	021650	Conduit, Pulser
32		Strainer Body Assy. <i>(See breakdown Strainer Body Assembly)</i>
33	052020	Screw, 3/8-16 x 1-1/4, HHC, GR-5
34		Electric Reset only <i>(See Breakdown)</i>

*Denotes this is a subpart used in the preceding assembly

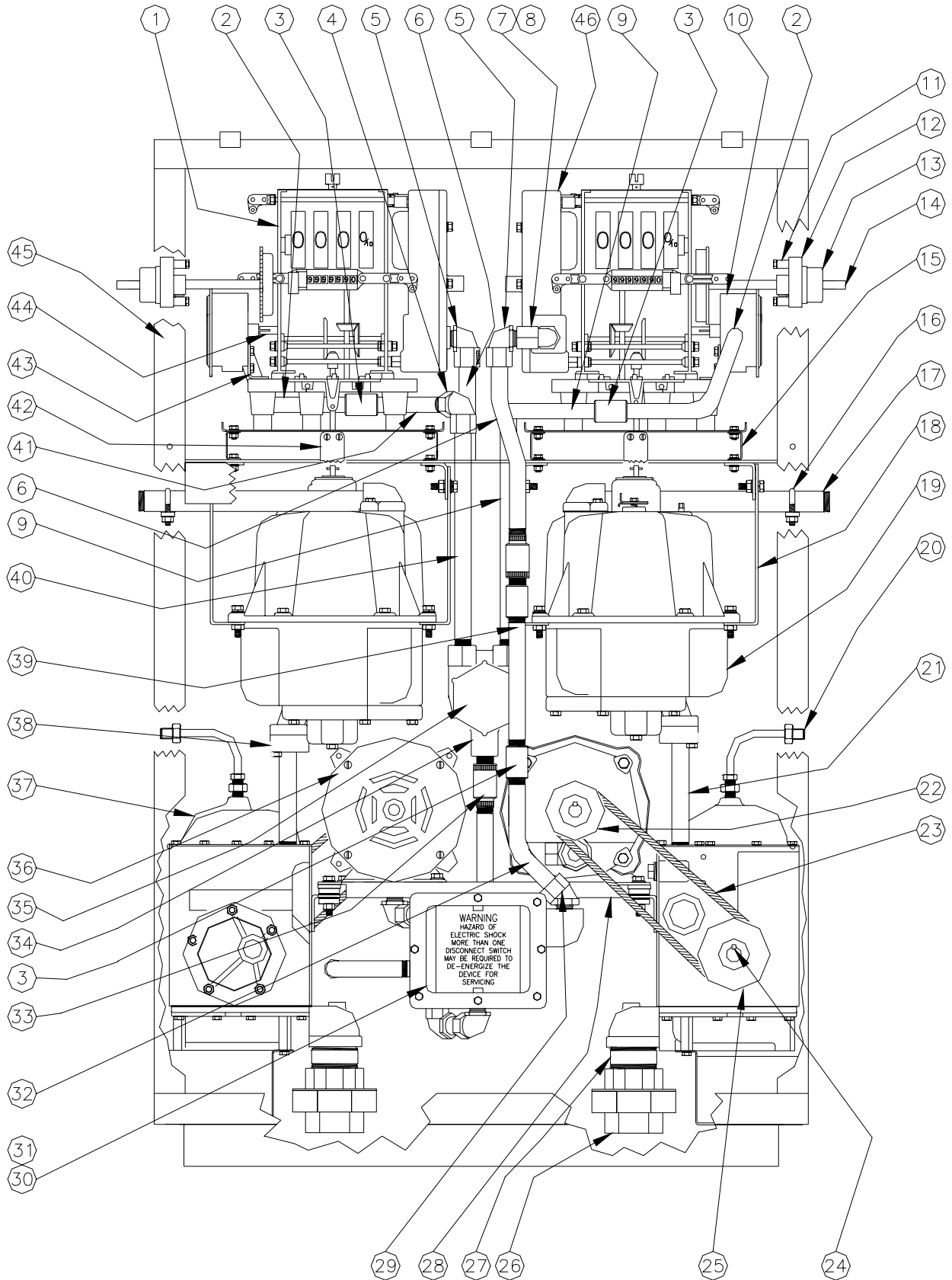
2150ARDX-2 CHASSIS - SIDE VIEW



2150ARDX-2 CHASSIS - SIDE VIEW

Item	Part No.	Description
1	015000	Bracket, Junction Box
2	021685	Conduit & Electrical
3	066400	Union, Explosion-Proof Conduit
4	027038	Gasket
5	003344	Junction Box
6	022140	Junction Box Cover Assy.
7		Check Valve Assy. (See breakdown Strainer Body Assembly)
8	048138	Valve Housing
9	021162	Conduit
10	021986	Conduit Coupling
11	021380	Conduit, 1/2 x 7-1/2

5200A-2, 5300A-2 CHASSIS - FRONT VIEW

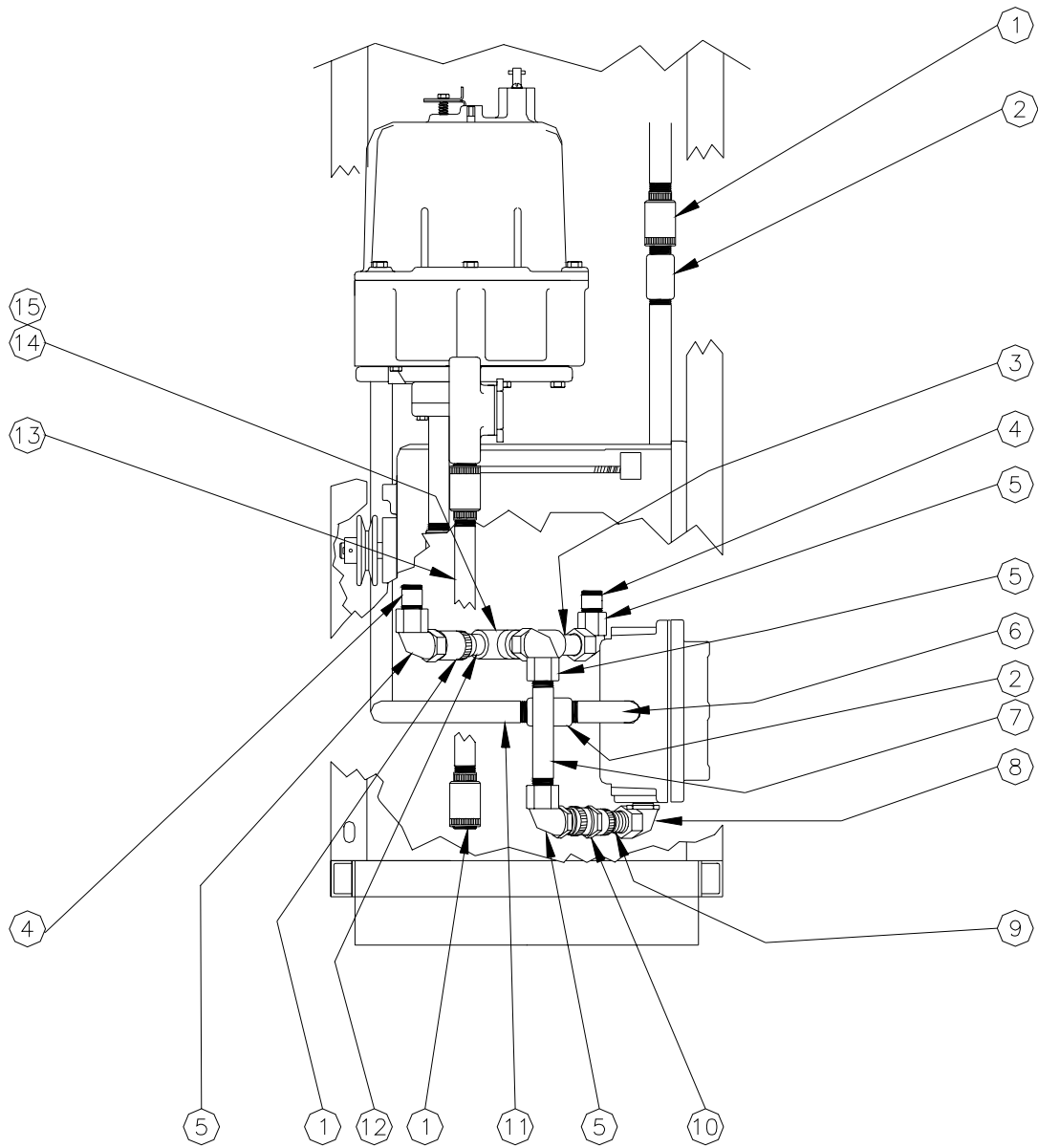


5200A-2, 5300A-2 CHASSIS - FRONT VIEW

Item	Part No.	Description	Item	Part No.	Description
1	021222	Non-Computer Assy., ERS, w/o Top Drive, Gallons	20	065830	Tube Assy, Vent
	*020996	Non-Computer Assy. w/o Electric Reset	21	021972	Coupling Nipple
	021107	Non-Computer Assy., ERS, w/o Top Drive, Liters	22	047680	Pulley, Variable Pitch
2	021651	Conduit, Pulser	23	012143	Belt, Vee 30 4L300
3	021986	Conduit Coupling	24	031315	Key
4	025030	Elbow, Conduit 1/2 x 90° F/F	25	047598	Pump, Pulley
5	025045	Elbow	26	066385	Union, 1-1/2 Stockham #150
6	021685	Conduit & Electrical	27	038005	Pipe, TBE 1-1/2 x 1-3/4 Close
7	024917	Potted Elbow	28	047075	Platform, Motor
8	048370	Reducer, Conduit	29	025015	Elbow, Conduit, 1/2 x 45° M/F
9	021650	Conduit, Pulser	30	014141	Box, Junction
10	021788	Pulser, 10:1	31	022196	Cover, Junction Box
	047648	Pulser, 100:1	32	021666	Conduit
11	063215	Stop, Operating Shaft	33	066400	Union, Explosion-Proof Conduit
12	015546	Bracket & Spring Assy.	34	003337	Box, Junction
13	003185	Bearing, Start Shaft	35	003461	Cover, Junction Box
14	055675	Shaft, Start Assy.	36	037667	Motor, 1/3 HP, 60 Hz. w/o switch, 5200
15	063963	Support, Computer		037692	Motor, 3/4 HP, 60 Hz.w/o switch, 5300
16	013295	U-Bolt, 1-3/8 ID		NOTE:	<i>Motor must be A.O. Smith; Franklin cannot be substituted.</i>
17	024375	Discharge Piping Assy., 3/4" Twin Pump, 5200	37	048028	Pumping Unit, 5200
	024376	Discharge Piping Assy., 1" Pump Twin, 5300		048022	Pumping Unit, 5300 (See Breakdown)
18	015043	Bracket, Meter Support, Non- Computer	38		Flange Assy. (See Breakdown)
19	035528	Meter Assy., Gallons	39	021377	Conduit, 1/2 x 6
	*035517	Meter, Gallons	40	021518	Conduit, 1/2 x 11-1/2
	*035513	Meter Transfer Body	41	021652	Conduit, Pulser
	*027038	Gasket	42	021977	Coupling Half
	*052020	Screw, 3/8-16 x 1-1/4 HHC, GR-5	43	015431	Bracket, Pulser, Gallon
	035535	Meter Assy., Liters	44	021941	Coupling, Pulser
	*035576	Meter, Liters	45	026652	Frame
	*035513	Meter Transfer Body	46		Electric Reset only (See Breakdown)
	*027038	Gasket			
	*052020	Screw, 3/8-16 x 1-1/4 HHC, GR-5			

*Denotes this is a subpart used in the preceding assembly

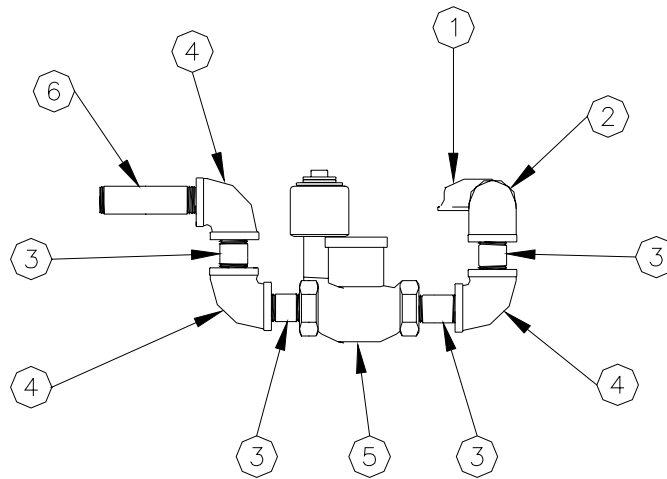
5200A-2, 5300A-2 CHASSIS - SIDE VIEW



5200A-2, 5300A-2 CHASSIS - SIDE VIEW

Item	Part No.	Description
1	066400	Union, Explosion-Proof Conduit
2	021986	Coupling, 1/2 Conduit
3	021364	Conduit, 1/2 x 3-1/2
4	038050	Conduit, 1/2 x 1-3/16 Close
5	025030	Elbow, Conduit 1/2 x 90° F/F
6	021664	Conduit, Bent, 3-7/8 x 3-7/8
7	021456	Conduit, 1/2 x 4-1/4
8	025045	Elbow
9	038050	Conduit, 1/2 x 1-3/16 Close
10	C08125	Conduit, Fitting 1/2 Union F/F
11	021663	Conduit
12	021345	Conduit, 1/2 x 1-1/2
13	021294	Conduit, 1/2 x 8
14	064840	Tee, Conduit
15	048370	Reducer, Conduit

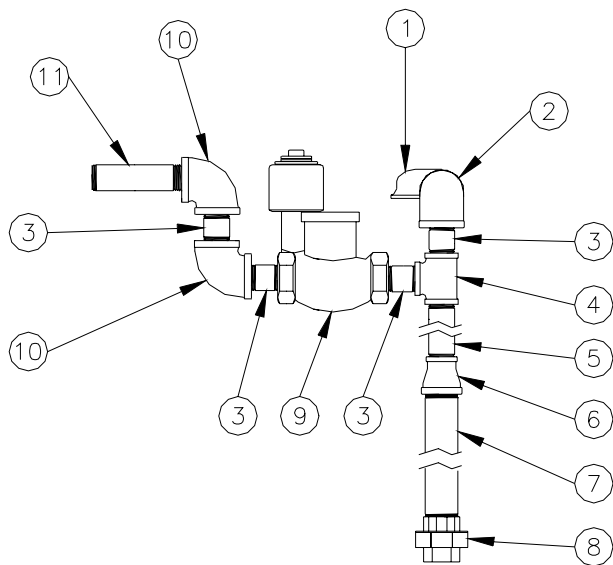
2150A DISCHARGE ASSEMBLY - 024379



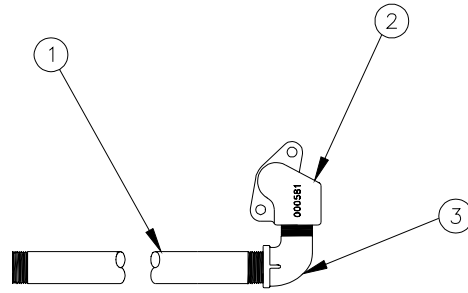
Item	Part No.	Description
1	003582	Elbow, Flanged Meter Discharge
2	024941	Elbow, 1 x 90°, Street
3	038035	Pipe, TBE, 1 x 1-1/2 Close Nip
4	024895	Elbow, 1 x 90°, Std.
5	067035	Valve, Solenoid, 1" Skinner
	<i>NOTE:</i>	<i>This part replaces part 067021 which is no longer available. It requires field modification of conduit for installation.</i>
6	044550	Pipe, TBE, 1 x 3-1/2

2150A SATELLITE DISCHARGE ASSEMBLY - 045641

Item	Part No.	Description
1	003582	Elbow, Flanged Meter Dschg
2	024941	Elbow, 1 x 90°, Street
3	038035	Pipe, TBE, 1 x 1-1/2 Close Nip
4	064796	Tee, 1 x 1 x 1
5	044665	Pipe, TBE 1 x 12
6	021984	Pipe Coupling, Reducer, 1-1/2 x 1
7	044921	Pipe, TBE, 1-1/2 x 7
8	066385	Union, 1-1/2 Stockham #150
9	067035	Valve, Solenoid, 1" Skinner (See NOTE above)
10	024895	Elbow, 1 x 90°, Std.
11	044550	Pipe, TBE, 1 x 3-1/2

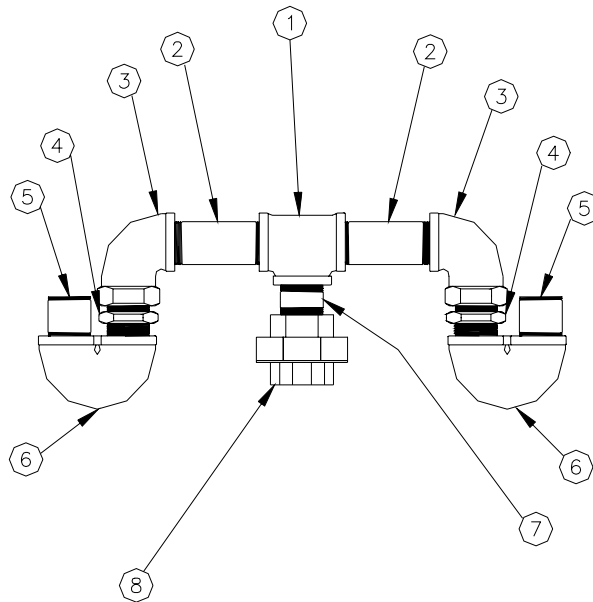


5200A DISCHARGE ASSEMBLY - 024375
5300A DISCHARGE ASSEMBLY - 024376



Item	Part No.	Description
1	044159	Pipe, TBE, 3/4 x 15-1/2, 5200
	044664	Pipe TBE, 1 x 11-7/8, 5300
2	003581	Elbow, Flanged Meter Discharge, 5200
	003582	Elbow, Flanged Meter Discharge, 5300
3	024940	Elbow, Street, 3/4 x 9 Obl, 5200
	024941	Elbow, 1 x 90°, Street, 5300

5200A-1 & 5300A-1 INLET MANIFOLD ASSEMBLY - 035194

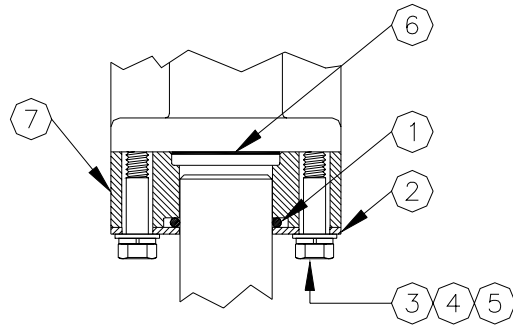


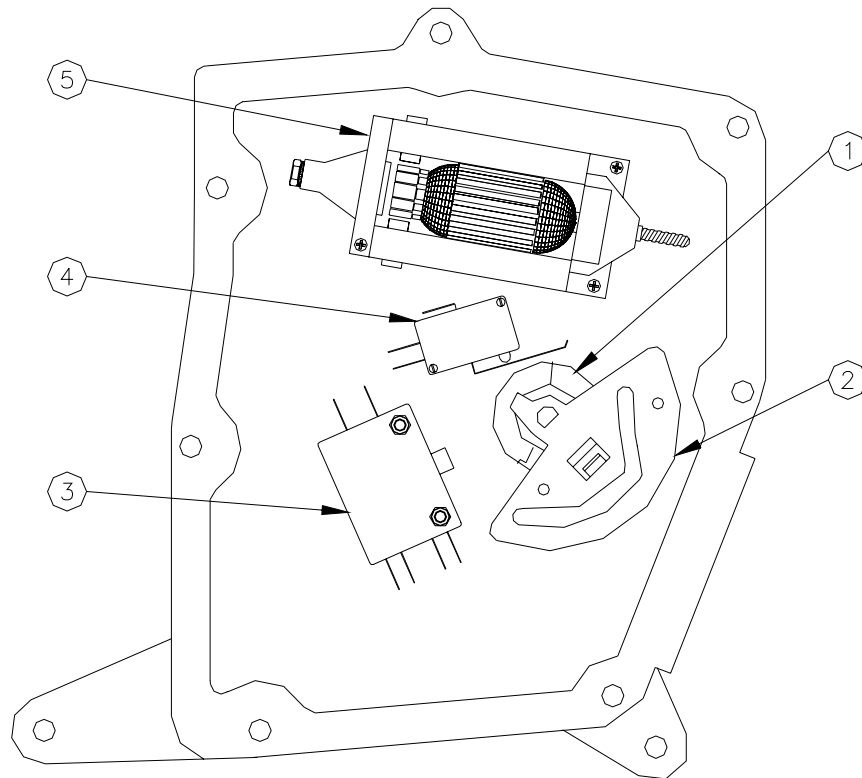
Item	Part No.	Description
1	064797	Tee, 1-1/2
2	045487	Pipe TOE, 1-1/2 x 3-3/8
3	022046	Ell, Dresser, 1-1/2 x 90°
4	066804	Check Valve Assy.
5	044910	Pipe, TBE, 1-1/2 x 2-1/2
6	024926	Pipe Return Bend 1-1/2
7	038005	Pipe, TBE, 1-1/2 x 1-3/4
8	066385	Union, 1-1/2 Stockham #150

NOTE: *Items 5 and 6 must be ordered separately. They are not part of assembly 035194.*

FLANGE ASSEMBLY

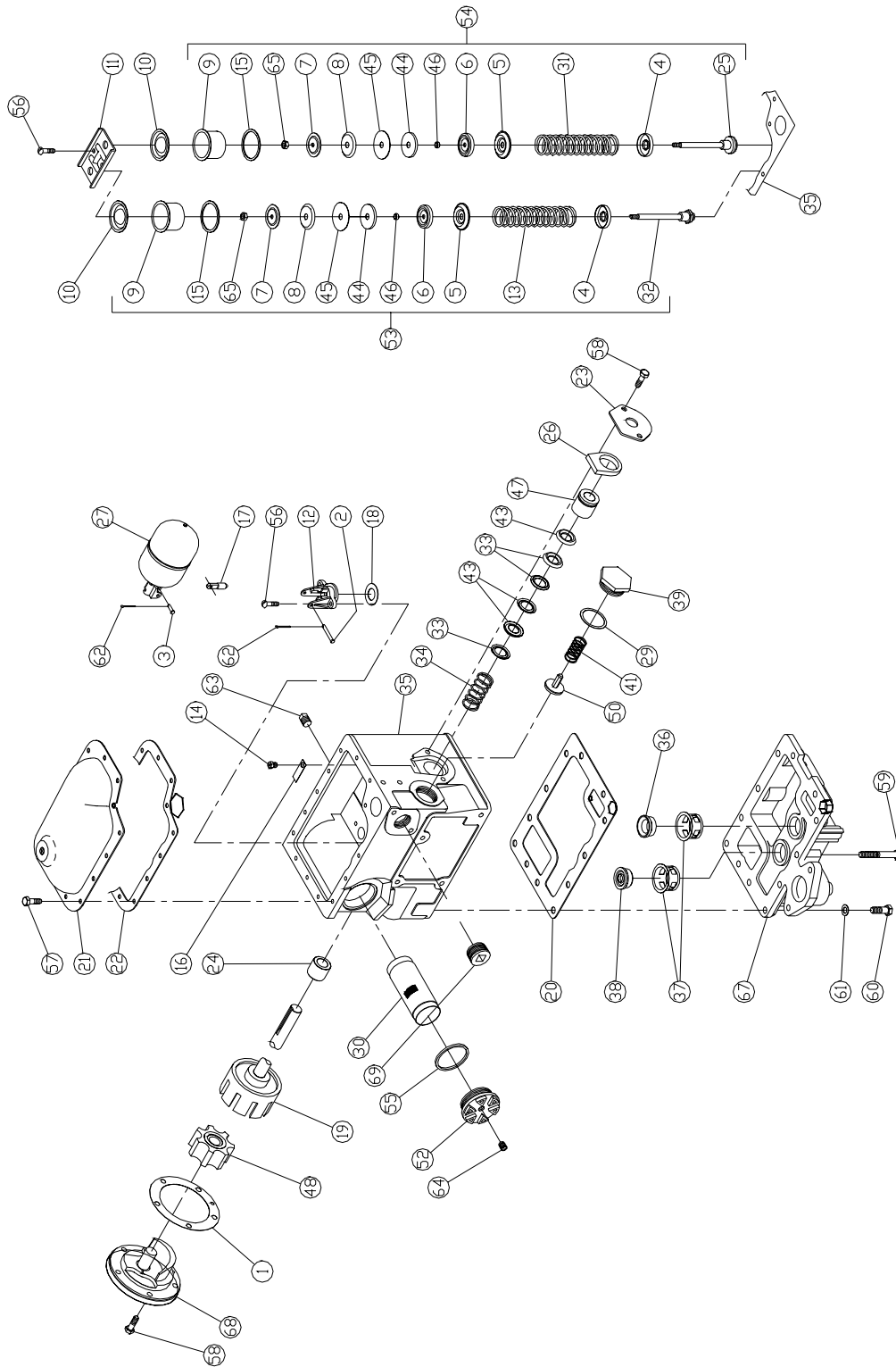
Item	Part No.	Description
1	049014	O-Ring
	M49014	O-Ring, Methanol/Ethanol
2	026079	Flange
3	051950	5/16-18 x 1-3/4 HHC Screw
4	068005	1/4 Washer
5	068875	Lockwasher, 5/16
6	027797	Gasket
7	021950	Coupling



ELECTRIC RESET - S00206

Item	Part No.	Description
1	S00211	Reset Motor, 115V
	S00212	Reset Motor, 220V
2	S00208	Electric Reset Motor Switch
3	S55321	Shaft, Ctr, Non-Computer (not visible on illustration)
4	S00213	Cam Group, Clockwise
5	S00210	Switch, DPDT, Robertshaw

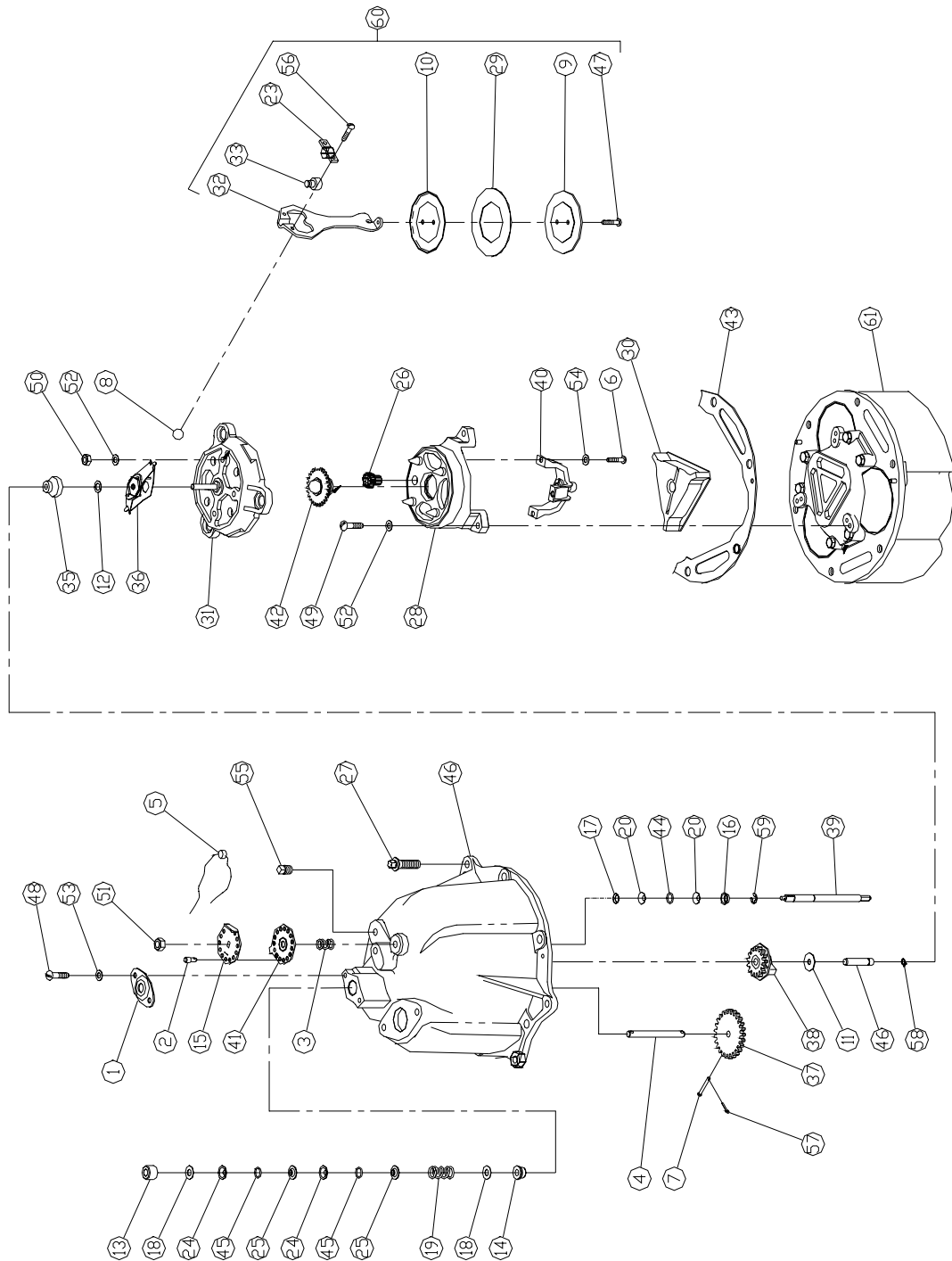
PUMPING UNIT ASSEMBLY BREAKDOWN



PUMPING UNIT ASSEMBLY BREAKDOWN

Item	Part No.	Description	Item	Part No.	Description
1	S00117	Gasket	53	S00125	By-pass Valve Assembly (34# to 35-1/2# spring (52))
2	S00456	Float Lever Pin		S00126	By-pass Valve Assembly (44-1/2# spring (53))
3	S00066	Valve Pin	54	S00127	Regulating Valve Assembly
4	S00067	Guide Plate	55	026768	Gasket
5	S00068	Spring Plate	56	S00451	1/4-20 x 7/8 Lg. Rd. Hd. Mach Screw
6	S00069	Plunger Head	57	S00452	1/4-20 x 1/2 Lg. Hex Hd. Cap Screw
7	S00072	Plunger Plate	58	S00453	5/16-18 x 7/8 Lg. Hex. Hd. Cap Screw
8	S00073	Plunger Follower	59	S00454	3/8-16 x 2-3/4 Lg. Hex. Hd. Cap Screw
9	S00074	Valve Cylinder	60	S00455	3/8-16 x 1-1/8 Lg. Hex. Hd. Cap Screw
10	S00075	Cylinder Head	62	S00457	1/16 x 1/2 Lg. Cotter Pin
11	S00076	Clamp Plate	63	S00459	1/4 Sq. Hd. Pipe Plug
12	S00077	Float Valve Body	65	S00461	1/4 - 28 Hex. Nut
13	S00078	By-Pass Valve Spring (#34 to 35-1/2# spring (52))	67	S01135	Lower Pump Head w/Valve Seat Guides, Regulating Valve Seat & By-pass Valve Seat Rotary Pump Head Assembly
	S00079	By-Pass Valve Spring (44-1/2# Spring (53))	68	S00057	
14	S00080	Vent Screw			
15	S00062	Valve Cylinder Gasket			
16	S00081	Vent Screw Guard			
17	S00082	Float Valve Needle			
18	S00083	Float Valve Gasket			
19	S00128	Pump Rotor Shaft Assembly			
20	S00119	Bottom Head Gasket			
21	S00084	Separator Cover			
22	S00120	Cover Gasket			
23	S00085	Retainer			
24	S00121	Bearing			
25	S00086	Regulating Poppet Assy			
26	S00124	Oil Well Felt			
27	S00061	Float Assembly			
29	S00718	Gasket			
30	063312	Suction Screen (Gasoline, 100 mesh)			
	063313	Suction Screen (Diesel, 40 mesh)			
31	S00088	Regulating Valve Spring			
32	S00089	By-pass Valve Poppet			
33	S00056	Packing Gland			
34	S00090	Packing Spring			
35	S00091	Rotary Pump & Separator Body w/Gasket, Bearing, Screws & Spring			
36	S00092	Regulating Valve Seat			
37	S00093	Valve Seat Guide			
38	S00094	By-pass Valve Seat			
39	S00717	Check Valve Cap			
41	S00447	Poppet Spring			
43	S00116	"V" Packing			
44	S00095	Plunger Guide			
45	S00096	Plunger Disc			
46	S00097	Plunger Spacer			
47	S00122	Drive Shaft Bearing			
48	S00129	Rotary Pump Idler			
50	S00098	Poppet Disc. & Relief Valve Assy			
52	063261	Suction Strainer Cap			

METER ASSEMBLY BREAKDOWN

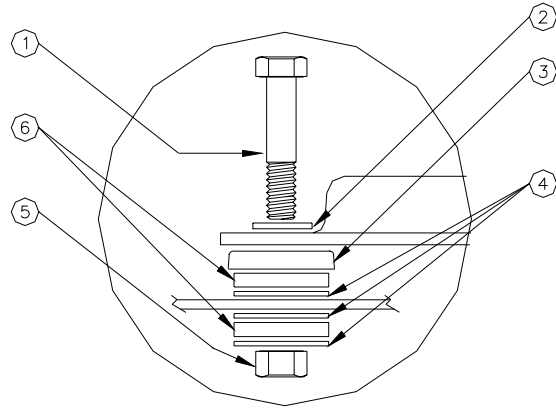


METER ASSEMBLY BREAKDOWN

Item	Part No.	Description	Item	Part No.	Description
1	S00466	Packing Gland Plate	38	S00499	Counter Drive Gear Complete - Gal
2	S00467	Seal Pin		S00114	Counter Drive Gear Complete - Ltr
3	S00469	Compensator Screw Spring	39	S00497	Compensator Shaft
4	S00473	Drive Shaft	40	S00500	Bracket & Pin Assembly
5	069080	Seal & Seal Wire	41	S00468	Index Plate
6	S00475	Special Screw	42	S00479	Pivot & Ball Assembly
7	S00476	Drive Shaft Pin	43	S00470	Meter Body Gasket
8	S00477	1/2" Ball	44	S00471	"O" Ring (.362 Dia.)
9	S00480	Plunger Cup Support	45	S00472	"O" Ring (.487 Dia)
10	S00481	Plunger Disc	46	S00486	Meter Cover w/ Center Gear Post, Index Plate, Pipe Plug & Retaining Ring
11	S00182	Washer	47	S00509	#10-32 x 3/8 Lg. Rd. Hd. Mach. Screw
12	S00183	Washer	48	S00507	#12-24 x 1/2 Lg. Rd. Hd. Mach. Screw
13	S00484	Upper Bearing Assembly	49	S00508	1/4-20 x 3/4 Lg. Rd. Hd. Mach. Screw
14	S00485	Bearing Assembly	50	S00511	1/4-20 Hex Nut
15	S00487	Compensator Index Disc	51	S00510	5/16-18 Hex Nut
16	S00488	Seal Half	52	S00520	1/4 Lockwasher
17	S00489	Seal Wedge	53	S00513	#1212 Lockwasher
18	S00490	Washer	54	S00514	#1114 Lockwasher
19	S00492	Packing Spring	55	S00515	1/8 Sq. Hd. Pipe Plug
20	S00493	Seal	56	S00516	#10-32 x 3/8 Lg. Rd. Hd. Sems Fastener
23	S00494	Bearing Retainer	57	S00517	1/16 x 1/4 Lg. Cotter Pin
24	S00495	Seal (black)	58	S00518	Truarc Retaining Ring
25	S00491	Seal Retaining Ring	59	S00519	Truarc "E" Retaining Ring
26	S00478	Compensator Pinion	60	S00521	Plunger Assy. w/ Bearing Retainer, Bearing Seat & Sems Fastener
27	S00512	Screw	61	S00522	Body & Seat Assembly w/ Pins
28	S00498	Main Pivot Bracket Assembly w/ Pins			
29	S00032	Plunger Cup Kit (Set of 3 Cups)			
30	S00501	Valve			
31	S00502	Wobble Plate w/ Slack Roller Post			
32	S00503	Connector			
33	S00504	Bearing Seat			
35	S00505	Slack Roller Assembly			
36	S00506	Slack Spring Assembly			
37	S00496	Drive Shaft Gear - Gal			
	S00115	Drive Shaft Gear - Ltr			

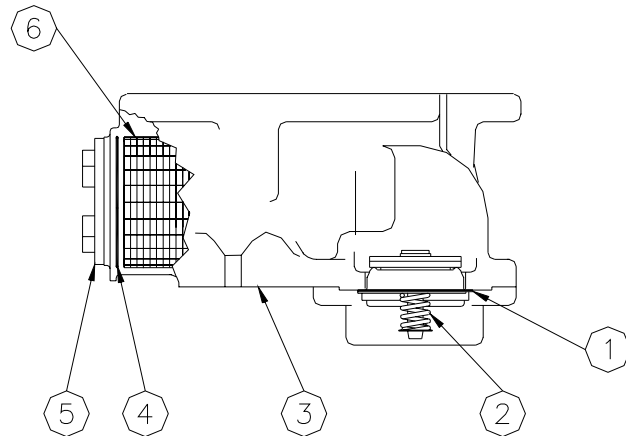
MOTOR MOUNT DETAIL

Item	Part No.	Description
1	051940	5/16-18 x 1-1/2 HHC Screw
2	068080	5/16 Washer
3	067735	Cup Washer
4	068620	Washer
5	038920	5/16-18 ESNA Nut
6	037885	Rubber Mount



STRAINER BODY ASSEMBLY

Item	Part No.	Description
1	063261	Strainer Cap
2	063312	Gasoline Strainer (100 mesh)
	063313	Diesel Strainer (40 mesh)
3	S00524	Strainer Body
4	026768	O-Ring
5	027005	Gasket
6	035319	Check Valve Assy.



WARRANTY

General Statements:

Gasboy International LLC. warrants all new equipment manufactured by Gasboy against defective material and/or workmanship, for the warranty period specified below, when the equipment is installed in accordance with specifications prepared by Gasboy.

This warranty does not cover damage caused by accident, abuse, Acts of God, lack of surveillance of automatic recording systems, negligence, mis-application, faulty installation, improper or unauthorized maintenance, installation or use in violation of product manuals, instructions, or warnings. Under no circumstance shall Gasboy be liable for any indirect, special, or consequential damages, losses, or expenses to include, but not limited to, loss of product, loss of profits, litigation fees, or the use, or inability to use, our product for any for any purpose whatsoever.

Parts Only - During the warranty period, Gasboy will, at its option, repair or replace defective parts returned transportation prepaid to its factory.

On-Site Labor Included - Gasboy will also provide, within the Continental United States and during the warranty period, the services of an Authorized Service Representative (ASR) for on-site repair or replacement of defective parts.

Replacement Parts - Any system components that are not part of the original system order, including Island Card Readers, Pump Control Units, etc., are considered replacement parts.

Equipment	Term	Coverage
Commercial Pumps and Dispensers Full-Cabinet Consumer Pumps	One year from date of installation or 18 mos. from date of Gasboy International's invoice to the purchaser, whichever comes first.	Parts and Labor.
Small Transfer Pumps, Meters, Pressure Regulators	One year from date of installation or 18 mos. from date of Gasboy International's invoice to the purchaser, whichever comes first. - Excepting the Model 2020 Hand Pump, which has a 90-day warranty from date of GASBOY International's invoice.	Parts Only.
Keytrol	One year from date of installation or 18 mos. from date of Gasboy International's invoice to the purchaser, whichever comes first.	Parts and Labor.
Fuel Management Systems: - CFN/ Profit Point - Series 1000/Fleetkey - TopKAT - Fuel Point Readers (sold with new systems)	One year from date of start-up or 15 mos. from date of Gasboy International's invoice to the purchaser, whichever comes first. - The basic warranty only applies to systems which have been started up by a Gasboy Authorized Service Representative (ASR).	Parts and Labor.
Additional Fuel Point Items: - Fuel Point Readers sold for retrofitting existing systems. - Fuel Point vehicle and dispenser components.	One year from date of start-up or 15 mos. from date of Gasboy International's invoice to the purchaser, whichever comes first.	Parts Only.
Encoders, Embossers, Modems, CRTs, and Logger Printers	Purchased with Fuel Management System (Encoders, Embossers only): 90 days from the date of start-up by a Gasboy ASR, or 180 days from date of Gasboy International's invoice, whichever occurs first. Purchased with Fuel Management System (Modems, CRTs, and Logger Printers only): Matches system warranty. Purchased Separately: 90 days from date of Gasboy International's invoice to the purchaser.	Purchased with System (Encoders, Embossers only): Parts only. Purchased with System (Modems, CRTs, Logger Printers only): Matches system warranty. Purchased Separately: Parts Only.
Air Diaphragm Pumps	Three years from date of purchase (for full warranty description, see Price List).	Parts Only.
Items not manufactured by Gasboy (ex. automatic nozzles, hoses, swivels, etc.)	Not warranted by Gasboy International (consult original manufacturer's warranty).	Not Applicable.
Replacement Parts	One year from date of Gasboy International's invoice to the purchaser.	Parts Only.

To the extent permitted by law, this warranty is made in lieu of all other warranties, expressed or implied, including warranties of freedom from patent infringement, or merchantability, or fitness for a particular purpose, or arising from a course of dealing or usage of trade. No one is authorized to vary the terms of the warranty nor may anyone make any warranty of representation, or assume any liability other than that herein stated, in connection with the sale described herein. The acceptance of any order by Gasboy International is expressly made subject to the purchaser's agreement to these conditions.



GASBOY INTERNATIONAL LLC

P.O. Box 309, Lansdale, PA 19446 ● (800) 444-5579 ● FAX: (800) 444-5569 ● www.gasboy.com