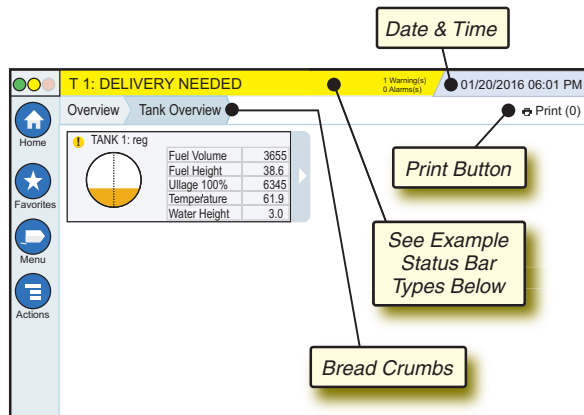


Example TLS4 Home Screen-1 Tank Monitored, 1 Warning



12/20/2012 06:01 PM **System Date and Time**

Overview Tank Overview **Bread Crumbs** - Menu path to current screen - touch a previous tab to return to the Menu Selection dialog.

Print (0) **Print button** - Touch to print a report of the current screen if you have a printer configured on your system. If you have more than one printer configured you'll be prompted to choose a printer. NOTE: A number in parentheses indicates the number of print jobs sent to the printer and waiting to be printed.

TLS4 Front Panel Status Lights



Example Status Bar Notifications

SYSTEM STATUS **Power On to console and no warnings or alarms from system.**

PM 8: SETUP DATA WARNING **Something needs to be reviewed and/or assessed. In this state, touching the status/warning bar brings you to the Reports > Alarms > Active screen so you can see the cause of the warning. While in that screen, touching the status/warning bar again acknowledges the warning and shuts off the beeper.**

L 10: FUEL ALARM **Something needs to be acted upon immediately. In this state, touching the status/warning bar brings you to the Reports > Alarms > Active screen so you can see the cause of the alarm. While in that screen, touching the status/warning bar again acknowledges the alarm and shuts off the beeper.**

SAVING **System tasks message bar.**

System Icons

- Home Screen Icon** - Touch to navigate to the home screen. Default is the Tank Overview screen (shown at left).
- Favorites Screen Icon** - Touch to setup/access your favorite screens and designate which screen will be the home (default) screen:
 - Touch to add the current screen to your Favorites list. You can have more than one Favorites screen. If you want to delete a screen from your Favorites list, touch next to that screen.
 - Touch to set the current screen as the home screen.
- Menu Icon** - Touch to access System Setup Menu, Reports, Diagnostics and other screens (Administrator assigned access).
- Actions Icon** - Touch to access Help. Touch the Help icon to open On-Board Help. Also, if the Shifts feature is set up, touching the Actions icon will display the Close Shift icon which can be touched to close a shift.
- Unrelated to the choices above, when entering data in any screen, a Red Circle may appear on the Actions icon to indicate that additional tasks can be performed on that screen.

Screen Dependent Icons - The number in the circle under the Actions icon indicates the device you are viewing or setting up. Touching the circled number displays all of the similar devices in a row along the bottom of the screen (other tanks, ports, probes, etc.) that you have set up. Touching the circled number again hides the device icon row. A highlighted icon indicates the device you are viewing or setting up. Some of the device icons you may see are shown below:

1 Device	Tank	Ethernet Port	Probe	Product	Relay
	External Input	Sensor	Printer	Siphon Set	Serial Port

Field Name* An asterisk (*) next to a field indicates you changed an entry for that field before you have accepted or saved the change in a dialog window.

- Touch to accept/save the entries you have made in a dialog window.
- Touch to exit or cancel without saving any changed entries you may have made in a dialog window.

Security Login

Login [If the console Security Feature is Enabled] - Touch the Login button to open the login screen so you can login as a user.

Once the screen above displays, log in to the system with your Username and Password. NOTE: If you do not log in, you are only permitted to view system status screens and to print out end-user reports

Logout Touch the Logout button to log out of the console. NOTE: If the console is inactive for 15 minutes, the console will automatically log you out. You will need to log back in to access your user account.

Using On-Board Help

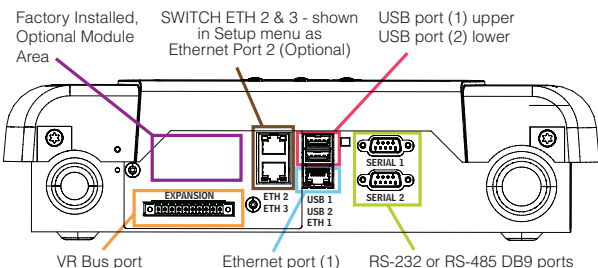
Note: On-board help applies to multiple console types - not all help features will apply to all consoles.

Enter On-Board Help:

- Upon entering Help, the topic associated with the currently displayed screen will be visible. Repeatedly touch the side scroll bar up/down arrows to scroll through a topic. You can also drag and pan through a topic. Touch the 'X' in the right corner of the Help screen title bar to return to the TLS4 screen you were viewing.
- To show or hide the help Table of Contents (TOC) pane on left side of screen - Quickly tap the text (Show TOC or Hide TOC) twice with your finger.
- To expand or close a book - Touch the icon of the book once with your finger.
- To go to a topic within a book - Quickly tap the book topic twice with your finger.
- Touch the side TOC scroll bar, and either move your finger up (to scroll down) or move your finger down (to scroll up).
- Repeatedly touch the side TOC scroll bar upper arrow to scroll up, or repeatedly touch the side scroll bar down arrow to scroll down.

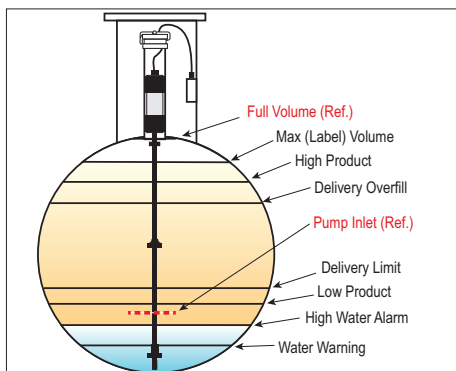
TLS4 Comm Ports - Menu>Setup>Communication

The diagram below shows Comm Port options. Your console's Comm Port configuration will depend on features ordered.



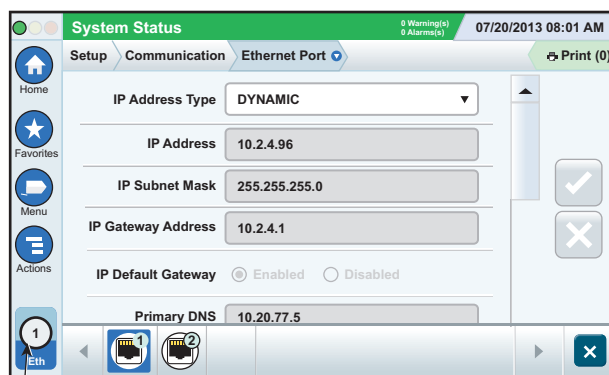
Alarm Limit Settings - Menu>Setup>Tank>Limits

The diagram below shows the relative position of tank alarm (Limit) settings.



Configure An Ethernet Port -

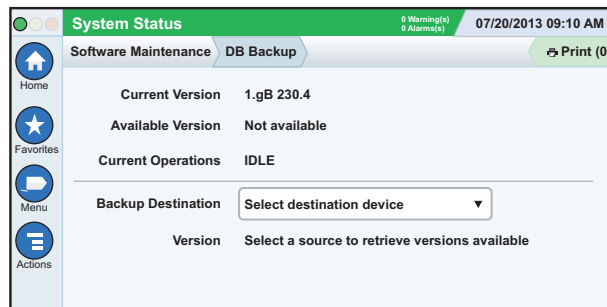
Menu>Setup>Communication>Ethernet Port



Selected Port

Touch **Actions>Help** from this screen for setup assistance.

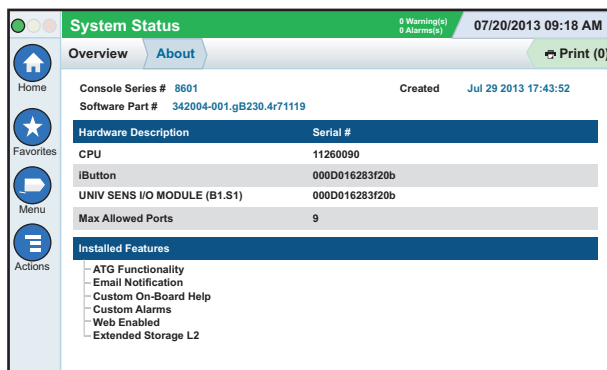
Backup Data - Menu>Software Maintenance>DB Backup



Insert your thumb drive (minimum 4 GB) in a USB port and touch the down arrow in the Backup Destination field to select the thumb drive, then follow the on-screen instructions to backup TLS4 data.

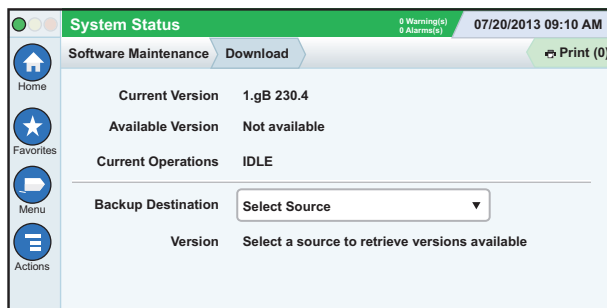
You should perform a DB Backup weekly.

TLS4 Software Version - Menu>Overview>About



Touch **Actions>Help** from this screen for content information.

Software Download - Menu>Software Maintenance>Download



Insert your valid V-R Code thumb drive in a USB port and touch the down arrow in the Backup Destination field to select the thumb drive, then follow the onscreen instructions to begin the download.

Workflow Wizard

Workflow Wizard is an application in the TLS4 that guides the user through the Veeder-Root recommended setup screens during the console's initial commissioning.

From the console's touch screen Workflow Wizard Setup can be accessed by touching **Menu>Setup>Workflow Wizard>Setup Workflow**.

Paths To Frequently Used Screens

Alarm Definitions - **Actions>Help>Show TOC>Home>Troubleshooting>Alarms and Warnings**

Viewing Custom Alarm Labels - **Menu>Setup>Custom Alarms>View**

Configure A Printer - **Menu>Setup>Printers**

Manual Delivery - **Menu>Reports>Delivery>Manual Delivery**

Entering A New Email Recipient - **Menu>Setup>Automatic Events>Address Book**

Set Date and Time - **Menu>Setup>Date and Time**

Ticketed Delivery - **Menu>Reports>Delivery>Ticketed Delivery**

Upgrade Features - **Menu>Software Maintenance>Upgrade Features**

Using The On-Screen Keyboard - **Actions>Help>Show TOC>Home>How To Use On-Screen Keyboard**

View Delivery History - **Menu>Reports>Delivery>Last Delivery**

View Reports - **Menu>Reports**

View Help - **Actions>Help**

On-board Help Topics of Interest - Actions>Help

- **Understanding ATG** -This help section explains the fundamentals of automatic tank gauges (ATG) as implemented by Veeder-Root.
- **Configuration and Maintenance** - This help book discusses Comm Ports, Initial Console Setup Sequence, and Periodic Maintenance recommendations.
- **Welcome (Help Intro) , Screen Icons, On-Screen Keyboards, and Touchscreen navigation** are essential help topics which you can view in the On-Board Help's Table of Contents.
- **Reference Tables** - This help section contains topics that cover a wide variety of useful information replaceable fuses, V-R acronyms, system device identifiers, tank tilt calculation information, DIM data, etc.



IMPORTANT!

The Battery Isolator Tab must be removed prior to startup. Refer to Manual P/N 577014-022, Figure 2 to locate Battery Isolator Tab and verify it has been removed.

Console Serial and Form Numbers

Write in Form and Serial Numbers from label on top of console housing for future reference:

Form Number: _____

Serial Number: _____