



Introduction

Purpose

This manual provides instructions to install the following Seal Installation kits:

- 032867
- 054024
- 054026
- M08781K001

Table of Contents

Topic	Page
Introduction	1
Important Safety Information	3
Installing the 032867, 054024, and 054026 Kits (For 70 Series and 620 Series Pumps)	5
Installing the M08781K001 Kit (For Model 25-28 Series Pumps)	6

Required Tools

The following tools are required for the installation of the kits:

- Pliers
- Flat blade screwdriver
- Snap Ring Pliers
- 9/16" wrench

Parts List

The following table lists the parts included in the 032867 kit.

Item	Description	Part Number	Quantity
1	O-Ring 3/8 X 1/2 -012 Vit	048845	1
2	O-Ring 9/16 X 11/16 -015	048846	1
3	Seal Ring	054131	1
4	Rotating Seal Ring	054133	1
5	Spring	057393	1
6	Washer	067166	1
7	Poly Bag 3 X 5	047400	2
8	Manual, Seal Installation	MDE-4449	1

The following table lists the parts included in the 054024 kit.

Item	Description	Part Number	Quantity
1	Spring - Seal	057956	1
2	Washer, AL 41/64 X 51/64	067210	2
3	O-Ring .612 I.D.X.103W -1	048941	1
4	Ring-Rotating Sealing	049510	1
5	Ring-Sealing	048820	1
6	O-Ring 11/16 X 7/8 Viton	048956	1
7	Poly Bag 3 X 5	047400	2
8	Manual, Seal Installation	MDE-4449	1

The following table lists the parts included in the 054026 kit.

Item	Description	Part Number	Quantity
9	Spring-600 Series Seal	057955	1
10	Washer, AL 41/64 X 51/64 X	067210	2
11	O-Ring .612 I.D.X.103 W -1	048941	1
12	Ring-Rotating Sealing	049510	1
13	Ring-Sealing	048820	1
14	O-Ring .737 I.D. X .103 W -1	048971	1
15	Poly Bag 3 X 5	047400	2
16	Manual, Seal Installation	MDE-4449	1

The following table lists the parts included in the M08781K001 kit.

Item	Description	Part Number	Quantity
1	Spring	M08745B001	1
2	Washer	067210	2
3	Rubber Seal	M08511B001	1
4	Rotating Ring	049510	1
5	Seal Ring	048820	1
6	Rubber Seal Boot	M08508B001	1
7	Woodruff Key	031375	2
8	Locator Pin	054535	2
9	Retaining Ring	K76238-65	1
10	Inner Pump Head (Red)*	M08504B001PG8	1
	Inner Pump Head (White)	M08504B001PN1	
	Inner Pump Head (Beige)	M08504B001PN2	
11	Poly Bag 3 X 5	047400	2
12	Manual, Seal Installation	MDE-4449	1

* The red colored Inner Pump Head is provided in the kit by default. If other colors are required (white or beige), they must be ordered separately.

Warranty

For information on warranty, refer to MDE-4255 Gasboy's Warranty Policy Statement. If you have any warranty-related questions, contact Gasboy's Warranty Department at its Greensboro location.

Important Safety Information

This section introduces the hazards and safety precautions associated with installing, inspecting, maintaining or servicing this product. Before performing any task on this product, read this safety information and the applicable sections in this manual, where additional hazards and safety precautions for your task will be found. Fire, explosion, electrical shock or pressure release could occur and cause death or serious injury, if these safe service procedures are not followed.

Preliminary Precautions

You are working in a potentially dangerous environment of flammable fuels, vapors, and high voltage or pressures. Only trained or authorized individuals knowledgeable in the related procedures should install, inspect, maintain or service this equipment.

Emergency Total Electrical Shut-Off

The first and most important information you must know is how to stop all fuel flow to the pump/dispenser and island. Locate the switch or circuit breakers that shut off all power to all fueling equipment, dispensing devices, and Submerged Turbine Pumps (STPs).

WARNING



The EMERGENCY STOP, ALL STOP, and PUMP STOP buttons at the cashier's station WILL NOT shut off electrical power to the pump/dispenser. This means that even if you activate these stops, fuel may continue to flow uncontrolled.



You must use the TOTAL ELECTRICAL SHUT-OFF in the case of an emergency and not the console's ALL STOP and PUMP STOP or similar keys.

Total Electrical Shut-Off Before Access

Any procedure that requires access to electrical components or the electronics of the dispenser requires total electrical shut off of that unit. Understand the function and location of this switch or circuit breaker before inspecting, installing, maintaining, or servicing Gasboy equipment.

Evacuating, Barricading and Shutting Off

Any procedure that requires access to the pump/dispenser or STPs requires the following actions:



- An evacuation of all unauthorized persons and vehicles from the work area
- Use of safety tape, cones or barricades at the affected unit (s)
- A total electrical shut-off of the affected unit (s)

Read the Manual

Read, understand and follow this manual and any other labels or related materials supplied with this equipment. If you do not understand a procedure, call a Gasboy Authorized Service Contractor or call the Gasboy Service Center at 1-800-444-5529. It is imperative to your safety and the safety of others to understand the procedures before beginning work.

Follow the Regulations

Applicable information is available in National Fire Protection Association (NFPA) 30A; *Code for Motor Fuel Dispensing Facilities and Repair Garages*, NFPA 70; *National Electrical Code (NEC)*, Occupational Safety and Hazard Association (OSHA) regulations and federal, state, and local codes. All these regulations must be followed. Failure to install, inspect, maintain or service this equipment in accordance with these codes, regulations and standards may lead to legal citations with penalties or affect the safe use and operation of the equipment.

Replacement Parts

Use only genuine Gasboy replacement parts and retrofit kits on your pump/dispenser. Using parts other than genuine Gasboy replacement parts could create a safety hazard and violate local regulations.

Safety Symbols and Warning Words

This section provides important information about warning symbols and boxes.

Alert Symbol



This safety alert symbol is used in this manual and on warning labels to alert you to a precaution which must be followed to prevent potential personal safety hazards. Obey safety directives that follow this symbol to avoid possible injury or death.

Signal Words

These signal words used in this manual and on warning labels tell you the seriousness of particular safety hazards. The precautions below must be followed to prevent death, injury or damage to the equipment:



DANGER: Alerts you to a hazard or unsafe practice which will result in death or serious injury.



WARNING: Alerts you to a hazard or unsafe practice that could result in death or serious injury.



CAUTION with Alert symbol: Designates a hazard or unsafe practice which may result in minor injury.

CAUTION without Alert symbol: Designates a hazard or unsafe practice which may result in property or equipment damage.

Working With Fuels and Electrical Energy

Prevent Explosions and Fires

Fuels and their vapors will explode or burn, if ignited. Spilled or leaking fuels cause vapors. Even filling customer tanks will cause potentially dangerous vapors in the vicinity of the dispenser or island.

Important Safety Information

No Open Fire



Open flames from matches, lighters, welding torches or other sources can ignite fuels and their vapors.



No Sparks - No Smoking

Sparks from starting vehicles, starting or using power tools, burning cigarettes, cigars or pipes can also ignite fuels and their vapors. Static electricity, including an electrostatic charge on your body, can cause a spark sufficient to ignite fuel vapors. Every time you get out of a vehicle, touch the metal of your vehicle, to discharge any electrostatic charge before you approach the dispenser island.

Working Alone

It is highly recommended that someone who is capable of rendering first aid be present during servicing. Familiarize yourself with Cardiopulmonary Resuscitation (CPR) methods, if you work with or around high voltages. This information is available from the American Red Cross. Always advise the station personnel about where you will be working, and caution them not to activate power while you are working on the equipment. Use the OSHA Lockout/ Tagout procedures. If you are not familiar with this requirement, refer to this information in the service manual and OSHA documentation.

Working With Electricity Safely

Ensure that you use safe and established practices in working with electrical devices. Poorly wired devices may cause a fire, explosion or electrical shock. Ensure that grounding connections are properly made. Take care that sealing devices and compounds are in place. Ensure that you do not pinch wires when replacing covers. Follow OSHA Lockout/Tagout requirements. Station employees and service contractors need to understand and comply with this program completely to ensure safety while the equipment is down.

Hazardous Materials

Some materials present inside electronic enclosures may present a health hazard if not handled correctly. Ensure that you clean hands after handling equipment. Do not place any equipment in the mouth.

WARNING

The pump/dispenser contains a chemical known to the State of California to cause cancer.

WARNING

The pump/dispenser contains a chemical known to the State of California to cause birth defects or other reproductive harm.

In an Emergency

Inform Emergency Personnel

Compile the following information and inform emergency personnel:

- Location of accident (for example, address, front/back of building, and so on)
- Nature of accident (for example, possible heart attack, run over by car, burns, and so on)
- Age of victim (for example, baby, teenager, middle-age, elderly)
- Whether or not victim has received first aid (for example, stopped bleeding by pressure, and so on)
- Whether or not a victim has vomited (for example, if swallowed or inhaled something, and so on)

WARNING



Gasoline ingested may cause unconsciousness and burns to internal organs.

Do not induce vomiting.

Keep airway open.

Oxygen may be needed at scene.

Seek medical advice immediately.

WARNING



Gasoline inhaled may cause unconsciousness and burns to lips, mouth and lungs.

Keep airway open.

Seek medical advice immediately.

WARNING



Gasoline spilled in eyes may cause burns to eye tissue.

Irrigate eyes with water for approximately 15 minutes.

Seek medical advice immediately.

WARNING



Gasoline spilled on skin may cause burns.

Wash area thoroughly with clear water.

Seek medical advice immediately.

IMPORTANT: Oxygen may be needed at scene if gasoline has been ingested or inhaled. Seek medical advice immediately.

Lockout/Tagout

Lockout/Tagout covers servicing and maintenance of machines and equipment in which the unexpected energization or start-up of the machine(s) or equipment or release of stored energy could cause injury to employees or personnel. Lockout/Tagout applies to all mechanical, hydraulic, chemical or other energy, but does not cover electrical hazards. Subpart S of 29 CFR Part 1910 - Electrical Hazards, 29 CFR Part 1910.333 contains specific Lockout/ Tagout provision for electrical hazards.

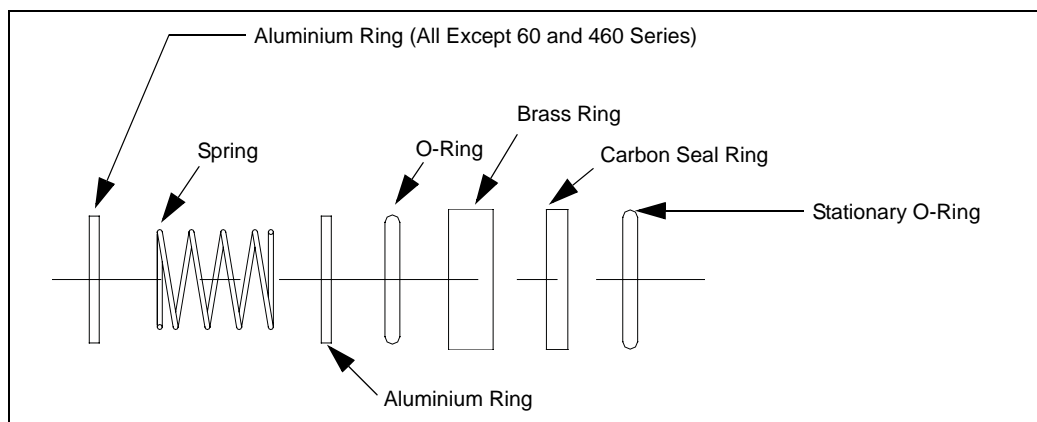
Installing the 032867, 054024, and 054026 Kits (For 70 Series and 620 Series Pumps)

Notes: 1) Before performing pump maintenance or service, refer to “[Important Safety Information](#)” on page 3.

2) Refer to [Figure 1](#) for parts identification and assembly order.

3) Refer to [Figure 2](#) on page 6 for the exploded view of the seal assembly and pump.

Figure 1: Assembly Order of the Parts



To install the 032867, 054024 or 054026 Seal Installation kit, proceed as follows:

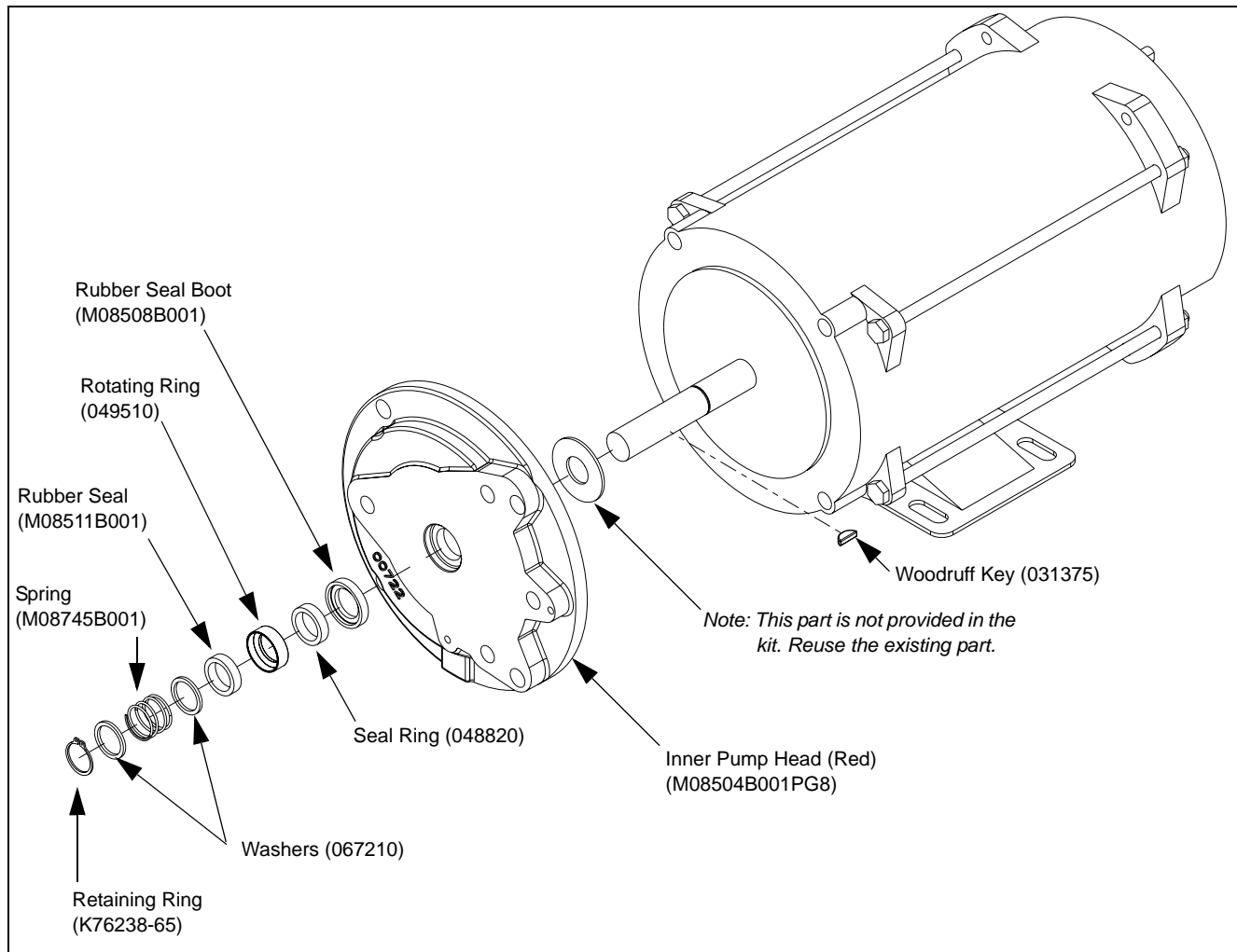
- 1 Remove the Pump Cover, Rotor, Vanes, and Shaft Key to expose the Mechanical Seal.
- 2 Remove the entire seal assembly from the shaft. If the pump is so equipped, it may be necessary to remove a Snap Ring from the shaft prior to removing the seal. Ensure that you do not scratch the shaft or motor counterbore surfaces when removing old seal parts.
Note: It is critical that the seal part mating surfaces remain clean and dry. Do not touch or allow oil of any type to contaminate the carbon or brass mating surfaces. If the seal inadvertently becomes contaminated, both mating surfaces must be carefully cleaned with a lint-free cloth and methyl alcohol.
- 3 Carefully install the Stationary O-Ring and the Carbon Seal Ring into the motor counterbore.
- 4 Install the Brass Ring, O-Ring, Aluminum Washer, Spring, and second Aluminum Washer, in that order. If the pump is equipped with a Snap Ring, install it at this time.
- 5 Reassemble the remaining parts.

Installing the M08781K001 Kit (For Model 25-28 Series Pumps)

Notes: 1) Before performing pump maintenance or service, refer to “[Important Safety Information](#)” on [page 3](#).

2) Refer to [Figure 2](#) for parts identification and the exploded view of the seal assembly and pump.

Figure 2: Installing the Kit (Exploded View of Seal Assembly and Pump)



To install the M08781K001 kit, proceed as follows:

- 1 Remove the Pump Cover, Rotor, Vanes, and Shaft Key to expose the Mechanical Seal.
- 2 Remove the Retaining Ring and entire seal assembly from the shaft.
- 3 Separate the Pump Block from the Inner Pump Head and Motor assembly. Retain the O-Rings (049180) for reuse.

- 4** Remove the old Inner Pump Head.
Note: Ensure that you do not scratch the shaft or motor counterbore surfaces when removing the old seal parts.
- 5** Carefully install the new Inner Pump Head (M08504B001PG8) on the motor shaft.
Note: The Rubber Seal Boot (M08508B001), Seal Ring (048820), and Locator Pins (054535) are pre-installed in the Inner Pump Head.
- 6** Reassemble the Pump Block and Inner Pump Head using the new Locator Pins (054535). Reuse one of the O-Rings (049180) between the Inner Pump Head and Pump Body.
- 7** Refer to [Figure 2](#) on [page 6](#) to install the new seal parts and secure with Retaining Ring (K76238-65).
- 8** Reassemble the Rotor, Vanes, Shaft Key, and Pump Cover. Reuse one of the O-Rings (049180) between the Pump Body and Pump Cover.



© 2008 GASBOY

7300 West Friendly Avenue · Post Office Box 22087
Greensboro, North Carolina 27420

Phone 1-800-444-5529 · <http://www.gasboy.com> · Printed in the U.S.A.

MDE-4449B Seal Installation Kits 032867, 054024, 054026, and M08781K001 Installation Instructions · July 2008