

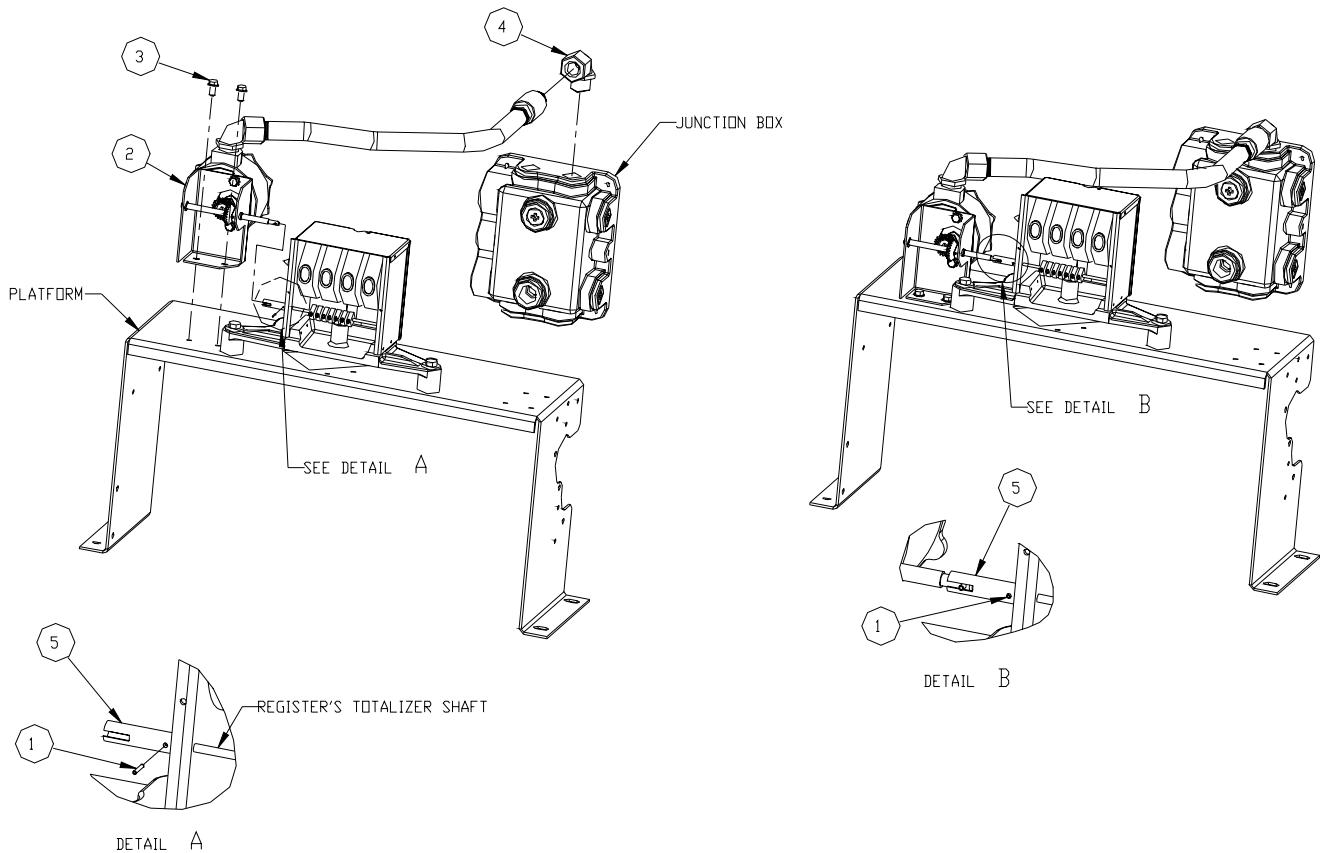
INSTALLATION INSTRUCTIONS 9120Q PULSER

This instruction sheet describes installation of pulser kits 026996 (10:1) and 026997 (100:1).

Kit Contents

Item	Part No.	Description	Item	Part No.	Description
1	043210	Spirol Pin, .052 x 3/8 SS	4	025045	Elbow, Conduit 1/2 x 90 M/F
2	026992	Pulser & Gear assembly, 10:1 (Kit 026996)	5	054527	Coupling, totalizer, 9120Q
	026993	Pulser & Gear assembly, 100:1 (Kit 026997)	6	032180	Instruction Sheet (this sheet)
3	053919	Screw, 1/4-20 x 1/2 Hex Head, Taptite	7	035282	Warnings and Safeguards Sheet

1. Turn off and lock out all power to the system.
2. Remove sheet metal cover from the unit.
3. Install coupling (item 5) into the register's totalizer shaft. Insert the spirol pin (item 1) into the holes in the coupling and register's totalizer shaft. The pin should be set with both ends protruding equally on the coupling. (See Detail A).



4. Install pulser, gears, bracket & conduit assembly (item 2) to the platform aligning the shaft's pin into the slot in the coupling (item 5) that was installed in the register's totalizer shaft (See Detail B). Using two 1/4-20 X 1/2 Taptite screws (item 3) secure pulser, gears, bracket & conduit assembly (item 2) in place aligning the two existing holes in the platform.
5. Remove the existing pipe plug from the junction box's top opening and install conduit elbow (item 4). Connect the conduit union to the just installed conduit elbow (item 4). *NOTE: Both the conduit with union and the conduit elbow (item 4) might need to be adjusted to align the connection.*
6. Open junction box cover and make proper wire connections inside the junction box. *NOTE: DC wires must be on left side of the divider plate inside the junction box.* If needed, see the *9120Q Installation/Operation Manual, 035092* for reference. When finished, re-install junction box cover with existing screws.
7. Restore power to the unit and check for proper operation of the totalizer. Re-install and secure sheet metal cover back to the unit.