

Frequently Asked Questions

What makes this product standout?

The new Frontier is world-class. It is backed by Gilbarco Veeder-Root, a name you trust, with more meter accuracy, higher security, greater reliability, and easier service.

How can I be assured of the quality of construction?

This factory is already ISO 9000 and is undergoing full UL approvals. We have the most recent processes and designs in the assembly line through Quality and Product Variation management. We are using the same DBS quality improvement methods that we use in all our global factories. We have put our best minds into producing this product.

Will this process yield the same results?

Gilbarco uses the same controls, the same processes, and the same measurement tools to help deliver consistent results in every global location. By using our global standard components in our factories, we can leverage scale and expertise on the most complicated components.

How can I trust this product?

This is a Gilbarco design that underwent 1000 hours of weathering testing including rain testing and severe pressure washing, dirt fuel testing through the meter, and 11 million liters of fuel with acceptable function within regulated tolerances. We change out components after trails to improve durability and resistance to rust. After all- this has to meet Gilbarco standards.

Will it work in my environment? Where has the meter been tested?

Frontier components have been tested in harsh environments of the Middle East, Latin America, Asia, and Africa. It has more reliable LEDs installed, and critical data is regularly backed up so no lost information when power outages occur.

What POS protocols does it have?

Frontier comes with Gilbarco standard 2-wire protocol, and the Sprint protocol.

Can I add CRIND or color screen? What about printers?

CRIND is not available on the Frontier. However, a transaction printer is available when using Sprint protocol/functionality.

Does the Frontier have 7 digit displays?

Yes, the money and volume displays are 7 digits. When using the 2-wire special functions, the POS can also work with the 7 digit features.

Frontier

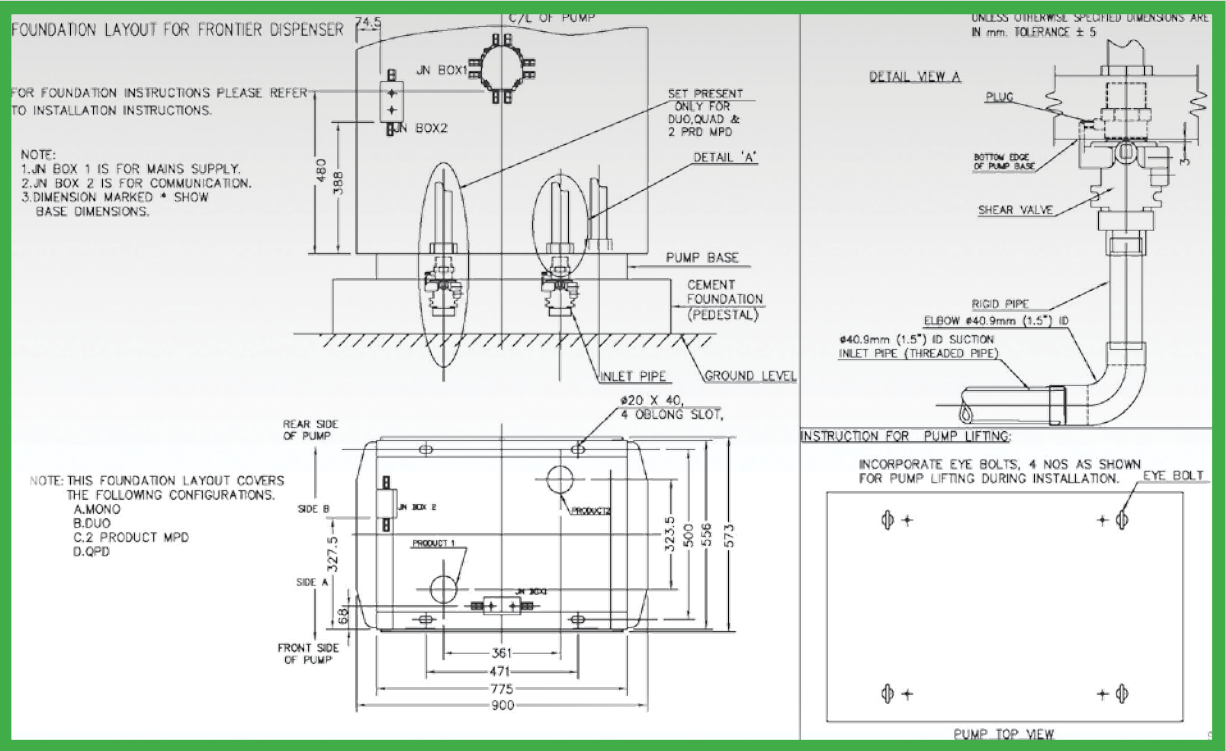
Frequently Asked Questions

Technical Specifications

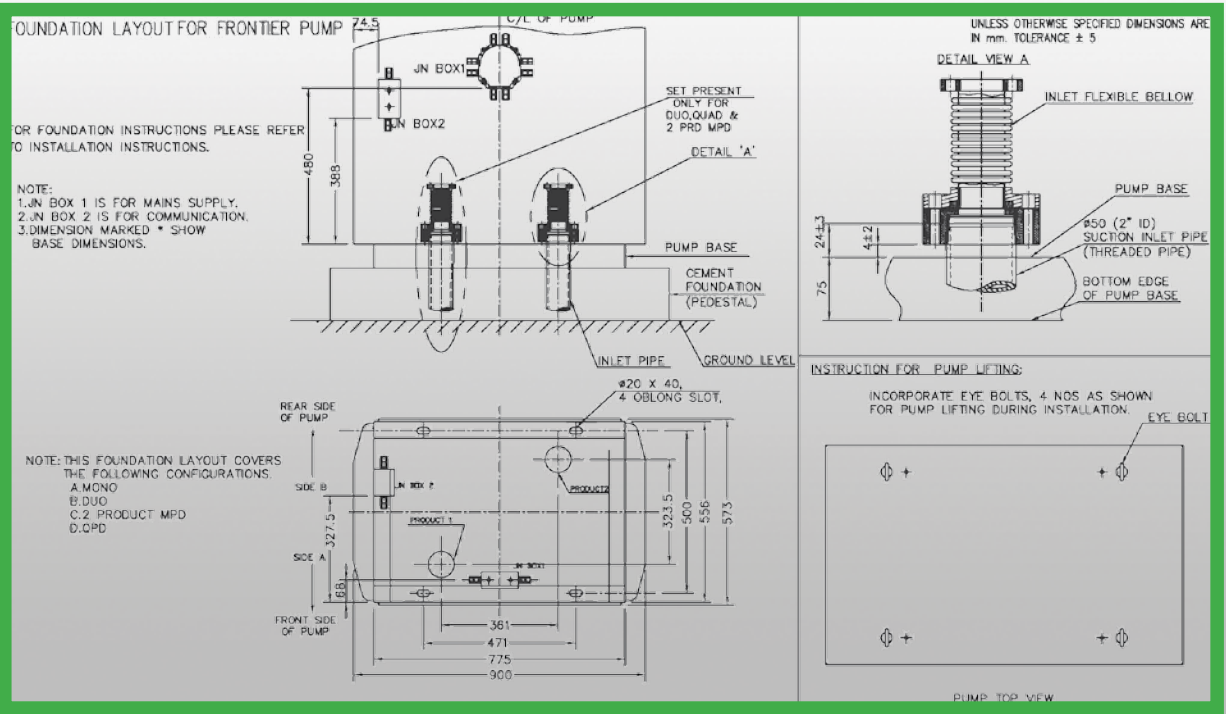


Technical Specifications

Foundation layout for Frontier dispenser



Foundation layout for Frontier pump



Shipping Weights and Dimensions

	Low Hose		High Hose	
Grades of Fuel	1	2	1	2
Suction	185 kg	205 kg	235 kg	255 kg
Pressure	165 kg	175 kg	215 kg	225 kg
Shipping Dimensions	1200mm x 840mm x 1900mm		1230mm x 880mm x 2560mm	

* Weights may vary by options chosen.

ACCURACY

- > Highly-tuned, wear-resistant materials
- > Redesigned rotary valve
- > Graphite deck plate
- > More surface area on piston cup

SECURITY

- > Tamper-resistant meter-encoder interface
- > Secure and proprietary serial interface prevents theft
- > Redundant encoder sensors ensure integrity and reliability
- > Padlock provisions for enhanced protection

SERVICEABILITY

- > Roomy and accessible hydraulic cabinet
- > Global standard components
- > Vane pump designed for easy service

RELIABILITY

- > Bright LED backlit displays save power, reduce heat, and last longer
- > Certified to withstand 8 kV of static electricity
- > Critical data stored in nonvolatile memory