



INSTALLATION INSTRUCTIONS

Lock-Down Screw

The following defined terms are used throughout this literature to bring attention to the presence of hazards of various risk levels, or to important information concerning the life of the product.

DANGER

Indicates presence of a hazard which *will* cause *severe* personal injury, death or substantial property damage if ignored.

WARNING

Indicates presence of a hazard which *can* cause *severe* personal injury, death or substantial property damage if ignored.

CAUTION

Indicates presence of a hazard which *will* or *can* cause *minor* personal injury, death or substantial property damage if ignored.

NOTICE

Indicates special instructions on installations, operation, or maintenance which are important but not related to personal injury hazards.

Lock-Down Screw Removal

- STEP 1** **DANGER** Always disconnect and lock out or tag out the power before starting to service the pump.
- STEP 2** **NOTICE** Care should be taken to insure that the internal portions of the check valve housing are clean and free of debris or contamination during servicing.
- STEP 3** Close the ball valve in the discharge line if it has been installed. Relieve system pressure by removing the protective cover ⑦ and then backing out the pressure adjustment screw ⑥.
- STEP 4** Remove the four wiper housing retaining screws ⑤, and discard.
- STEP 5** Lift off the wiper ③ and housing ④ from the lock-down screw and discard.
- STEP 6** Unscrew the lock-down screw ② and remove it from the check valve housing and discard.

STEP 11 Open the ball valve in the discharge line if it has been installed.

STEP 12 Readjust the pressure adjusting screw ⑥ to the desired pressure setting, if required.

STEP 13 Replace the protective cap ⑦.

Lock-Down Screw Re-installation

- STEP 7** Sparingly lubricate the two o-rings on the lock-down screw before rotating the new lock-down screw clockwise into the check valve housing. Use light grease, oil, or petroleum jelly.
- STEP 8** Sparingly lubricate the wiper ID lip before sliding the wiper housing over the lockdown screw onto the check valve housing. Use light grease, oil, or petroleum jelly.
- STEP 9** Install the four #6 wiper housing retaining screws ⑤ and torque to 15 in-lb.
- STEP 10** Rotate the lock-down screw counter-clockwise until it reaches a positive stop.

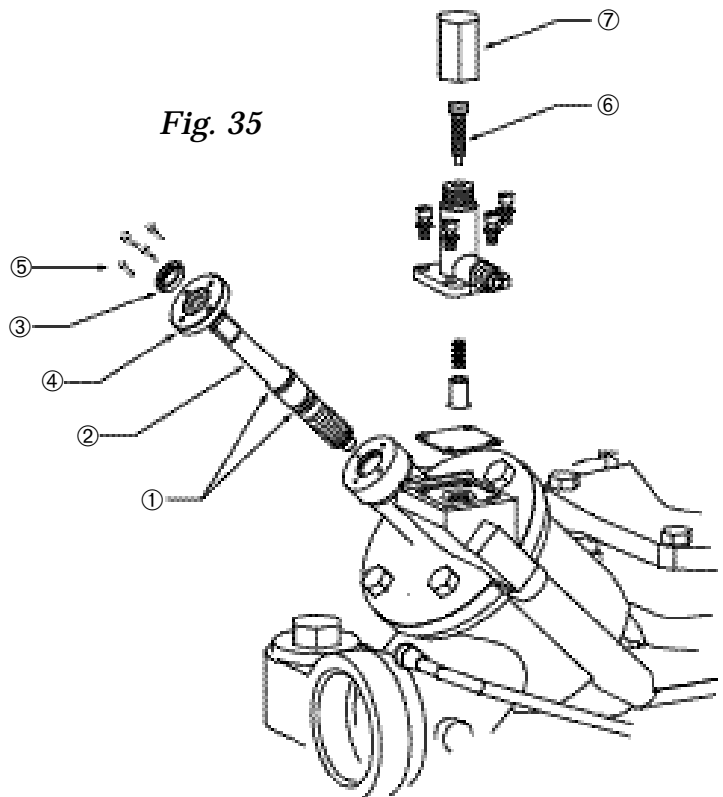


Fig. 35



500 East 59th Street • Davenport, IA 52807 • 319-391-8600
Red Jacket reserves the right to make design improvements and pricing modifications as necessary and without notice.
www.redjacket.com Printed in USA