

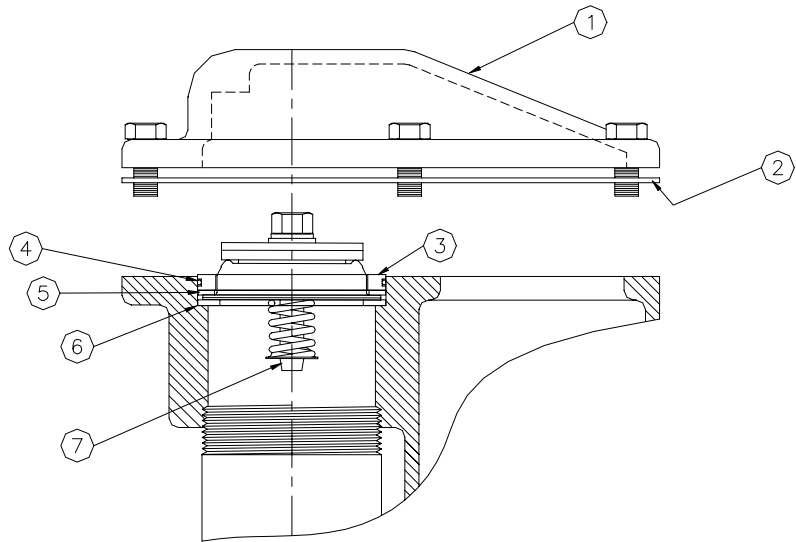
CHECK VALVE RETROFIT INSTRUCTIONS MODELS 25/425, 26/426, 27/427, 28/428 & 250/4250

This instruction sheet covers the retrofit of the check valve to Models 25/425, 26/426, 27/427, 28/428 and 250/4250 pumps. Depending on which one you are retrofitting, you will have one of the following kits:

- 032083 Models 25/425, 26/426, 27/427, 28/428 & 250/4250
- 032084 Models 250AR/4250AR

Kits contain the following:

Item	Part No.	Description
1	003489	Strainer Cover, Models 25/425, 26/426, 27/427, 28/428 & 250/4250 (Kit 032083 only)
	003491	Strainer Cover, Models 250AR/4250AR (Kit 032084 only)
2	027360	Gasket
3	047201	Upper Check Valve Plate
4	049019	O-Ring
5	027301	Gasket
6	047202	Check Valve Support Plate
7	035319	Check Valve Assembly



WARNING: Turn off and lock out all power to the pump before servicing. Follow all warnings and safeguards as outlined in the *Installation Manual*.

1. Remove five bolts securing strainer cover and set aside.
2. Remove cover and gasket and discard parts.
3. Remove old check valve assembly and O-ring and discard parts.
4. Install check valve support plate (item 6).
5. Install check valve assembly (item 7).
6. Install gasket (item 5).
7. Install o-ring (item 4) in groove of upper check valve plate (item 3).
8. Lubricate O-ring with silicone and install upper check valve plate assembly.
9. Install cover gasket (item 2).
10. Install new strainer cover (item 1).
11. Install and tighten the five cover bolts.

