

Highline™ Ultra-Hi™ High Gallonage

Model No.	Description
AC4992D-MS1	Ultra-Hi Single One-Product Master Dispenser
AC6992D-MS1	Ultra-Hi Dual Two-Product Master Dispenser (Single-Sided or Two-Sided)
AC7992D-MS1	Ultra-Hi Master/Satellite “Combo” Dispenser

Load Table

See attached wiring diagrams.

FE-238A	Highline High Gallonage Master Satellite System 120VAC
FE-240A	Highline High Gallonage “Combo” Master Satellite 120VAC
FE-252A	Highline High Gallonage Master Satellite System 240VAC
FE-253A	Highline High Gallonage “Combo” Master Satellite 240VAC

Operating Environment

Relative Humidity	20% to 95% non-condensing
Minimum Outside Ambient Temperature	-22°F (-30°C)
Maximum Outside Ambient Temperature	104°F (40°C)

Performance Requirements

Minimum Delivery Rate*	40 gpm @ 35 psi inlet pressure (152 lpm @ 102 kg/cm ² inlet pressure) or when teamed with a satellite	60 gpm @ 35 psi inlet pressure (228 lpm @ 76 kg/cm ² inlet pressure)
Meter Accuracy	± .25% from 1.5 to 15 gpm (5.7 to 57 lpm)	

**Actual flow rate will depend on your specific installation and accessories.*

Weights

Ultra-Hi Single One-Product

Dispenser Weight 320 pounds/144 kilograms

Ultra-Hi Dual Two-Product

Dispenser Weight 380 pounds/171 kilograms

Ultra-Hi Master/Satellite “Combo”

Dispenser Weight 370 pounds/167 kilograms

Model Number Breakdown • Hydraulics

AC X X X X X X XXXXX

- A. U.S. _____
- C. Electronic Pump or Dispenser _____

- B. Highline™ Series _____
- F. International Highline Series _____

- A. Dispenser, Standard Gallonage _____
- B. Pump, Standard Gallonage _____
- C. Dispenser, Conventional High Gallonage _____
- D. Pump, Conventional High Gallonage _____
- E. Dispenser, Conventional High Gallonage Master (for satellite) _____
- F. Dispenser, Satellite (less CD module) _____
- G. Pump, PUS High Gallonage (with 1" piping) _____
- J. Pump, PUS Intermediate Gallonage (with 3/4" piping) _____
- K. Dispenser, Super-Hi™ High Gallonage Master (for satellite) _____
- L. Dispenser, Ultra-Hi™ High Gallonage Master (for satellite) _____
- M. Dispenser, Ultra-Hi Satellite (less CD module) _____
- N. Dispenser, Ultra-Hi™ High Gallonage Combo (with satellite) _____
- P. Pump, Standard Gallonage (with sump flow control) _____
- R. Pump, Conventional High Gallonage (with sump flow control) _____
- S. Dispenser, Conventional High Gallonage Combo (with satellite) _____
- T. Dispenser, Super-Hi™ High Gallonage Combo (with satellite) _____
- 2. Pump, PUS Intermediate Gallonage (with 3/4" piping and sump flow control valve) _____

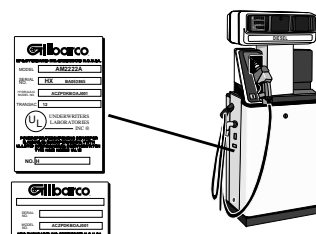
- A. Single Product _____
- B. Dual One-Product _____
- C. Dual Two-Product _____
- D. Dual One-Product (rotated nozzle putdowns) _____
- G. Single Product (rotated nozzle putdowns) _____
- S. Dual One-Product (rotated nozzle putdowns, one-sided) _____

- B. U.S. Gallons Totalizers, Vapor Recovery Nozzle Hook and Boot _____
- K. Metric Totalizers, Vapor Recovery Nozzle Hook and Standard Boot _____
- G. Metric Totalizers, Standard Nozzle Hook and Vapor Recovery Nozzle Boot _____
- N. Imperial Gallons Totalizers, Vapor Recovery Nozzle Hook and Standard Boot _____
- Q. Electro-mechanical Totalizer _____

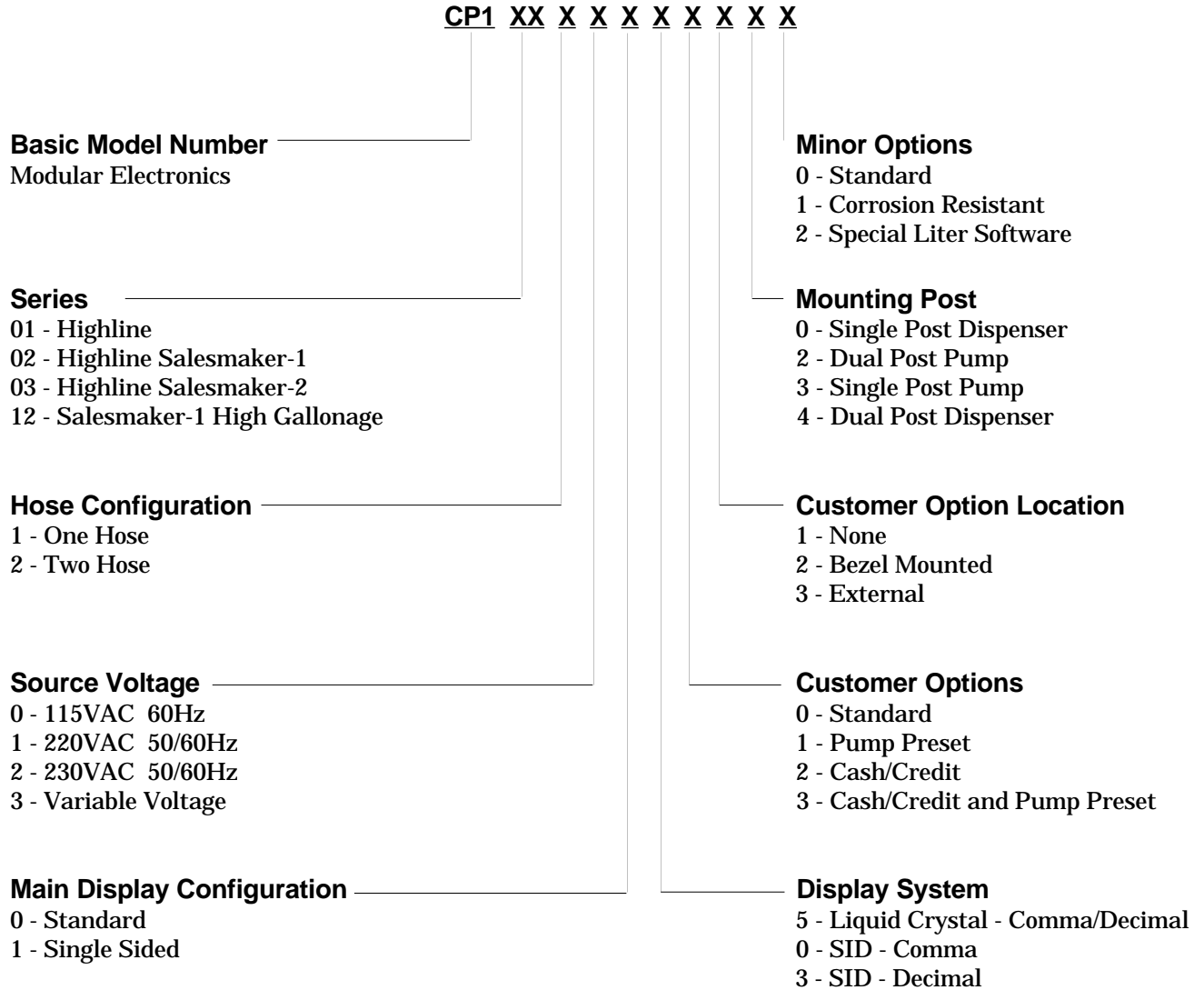
- A. Fillup _____
- B. Preset _____

- A. First Major Revision _____
- M. Universal Hydraulics (value analyzed) _____
- T. Electronic Calibration _____

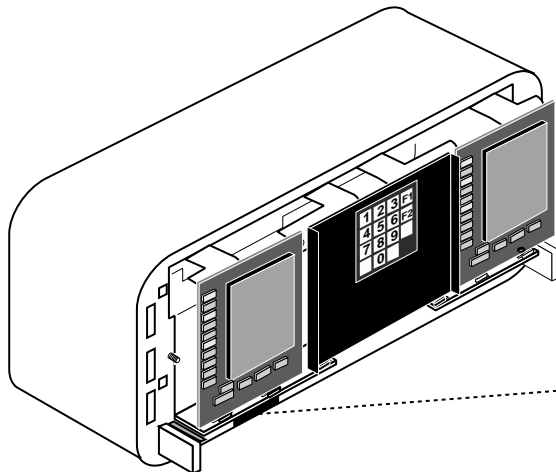
- Reference (for export models) _____



Model Number Breakdown • Electronics



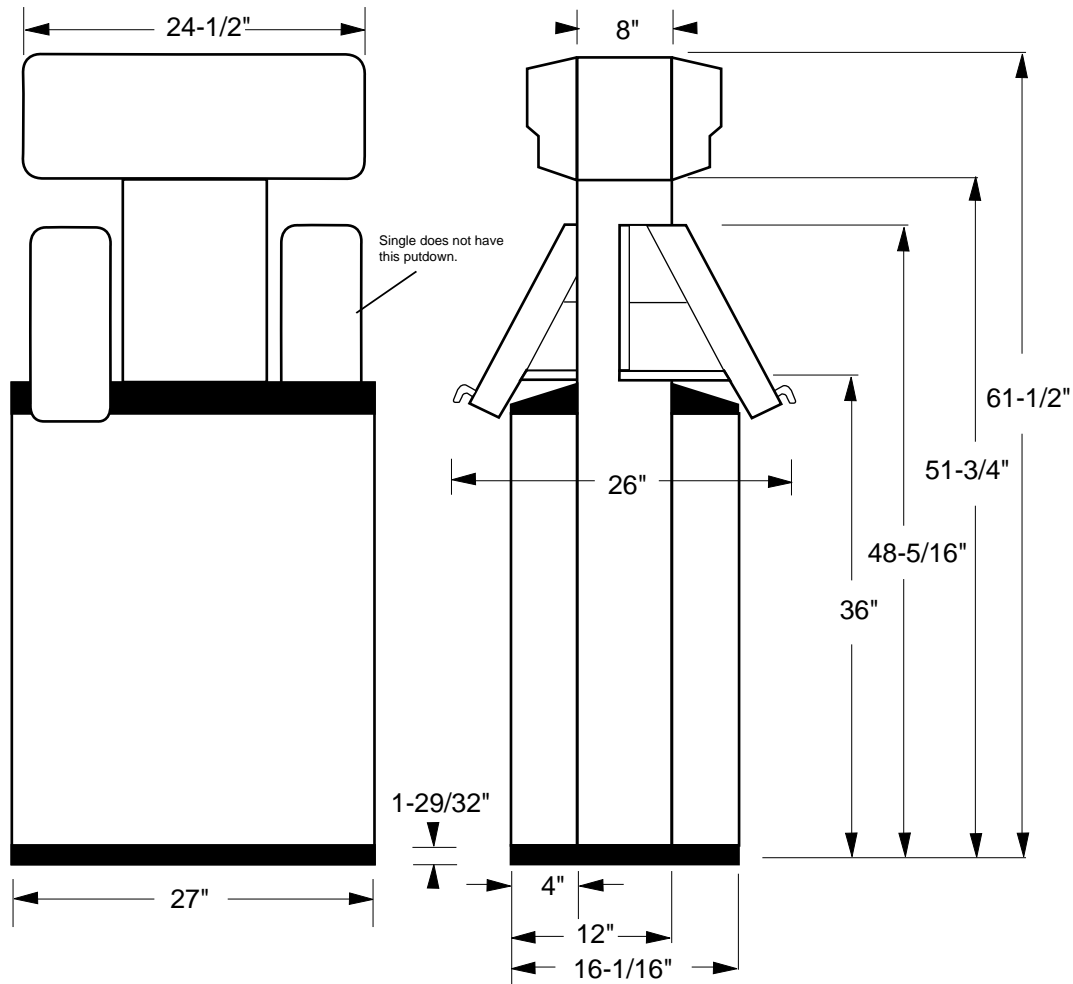
Thirteen digit electronics model number is stamped on plate attached to bottom of electronics module.



Elevation

Highline™ Ultra-Hi™ High Gallonage Dispenser

Single One-Product Master Dispenser
Dual Two-Product Master Dispenser
Master/Satellite "Combo" Dispenser



Screening Specifications

Lower Doors

Overall: 40.83" H x 34.34" W

(Total Blank Area)

Flat Surface: 32.28" H x 24.67" W

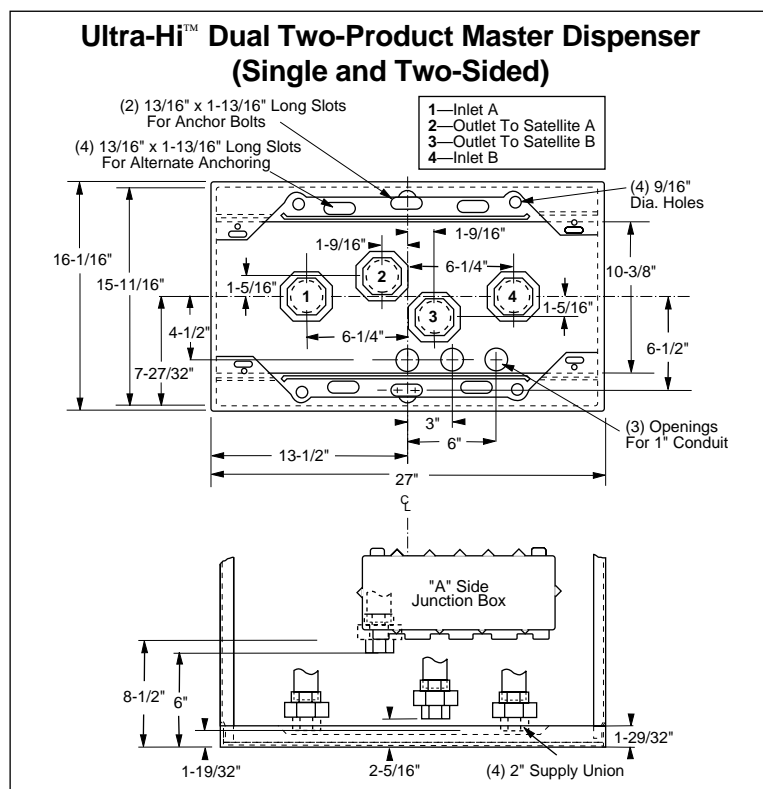
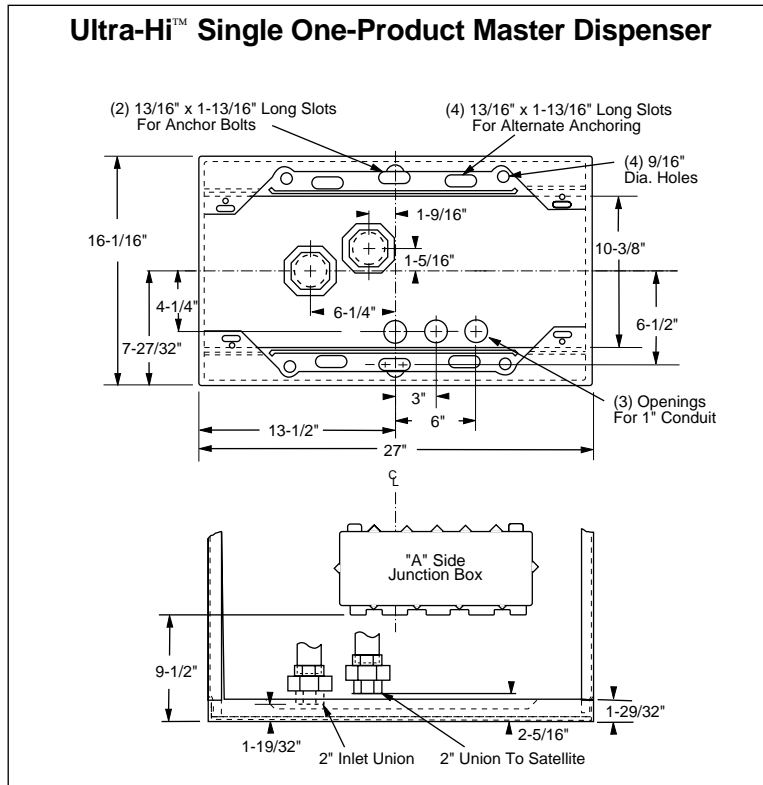
(Maximum Viewing Area)

Brand Panels

Overall: 2.24" H x 21.5" W

Screening Area: 1.86" H x 20.88" W

Highline™ Ultra-Hi™ High Gallonage Dispenser



Highline™ Ultra-Hi™ High Gallonage Dispenser

Ultra-Hi™ Master/Satellite “Combo” Dispenser

