

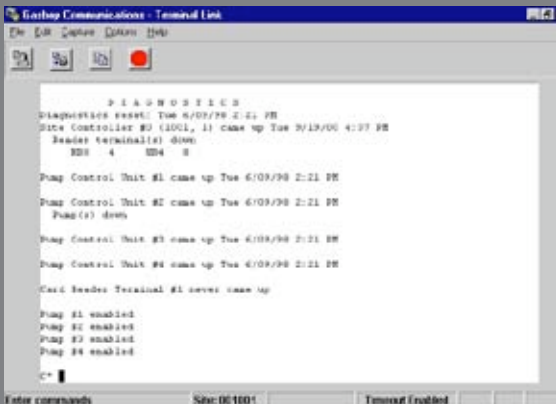
Gasboy® PC/CFN For Windows® Software

PC Access to sites with Gasboy CFN II / III™ Fleet Management Systems

Gasboy PC/CFN for Windows creates an interactive communications link between your PC and your Gasboy CFN II/III fleet management systems at your sites. You can easily communicate with one or an unlimited number of CFN II/III systems. Communication is via a direct connection from the PC comm. Port to your CFN system or through a telephone modem. The software is designed as a single desktop application and is compatible with Microsoft Windows 95, 89, 2000 or NT 4.0 Workstation operating systems.

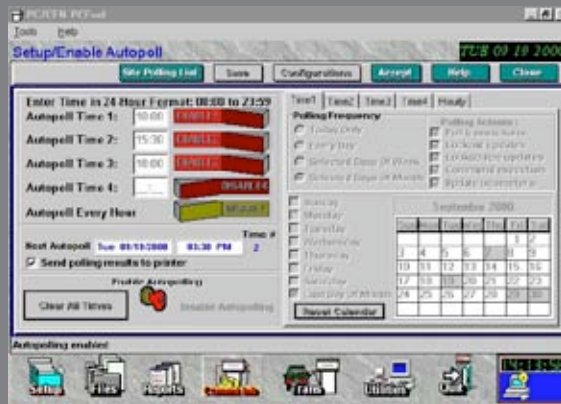
Communicate With Sites

Establish communication with your fuel sites easily. Initiate site commands for file maintenance, diagnostics and more.



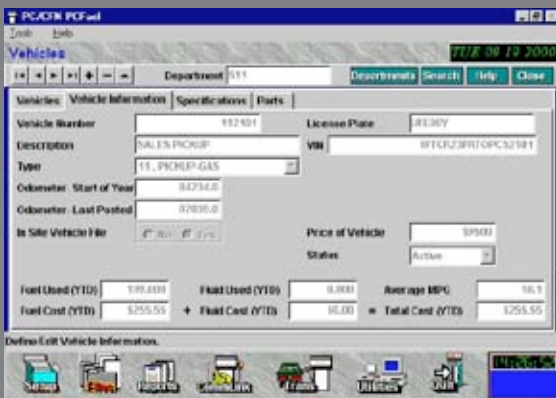
Automatically Poll Fuel Transactions

Let an unattended PC automatically gather your fuel transactions at the time and frequency you designate.



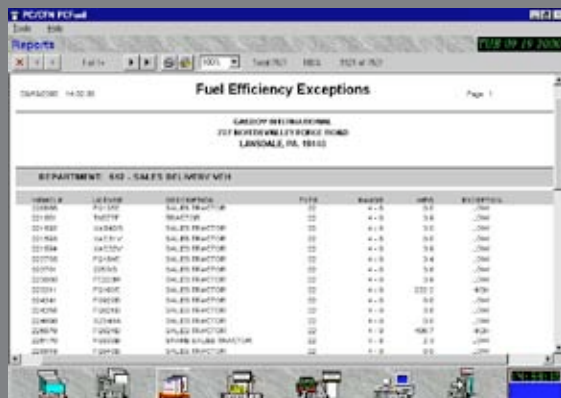
View Data

Link descriptive information to your cards, keys or codes and view current department employee or vehicle year to date fuel usage.



Display or Print Reports

Preview or print a variety of fuel usage reports by department, employee, vehicle, tank or product. Query transactions by a specified group and date and time range.



Features and Specifications

FEATURES

Site Communication

Use your PC to interact directly with your CFN site controller. Simply select the site name and click on the "Contact Site" button. Once connected, initiate any site commands.

Setup and User Interface

Quickly setup the software through a setup wizard. Easily navigate the software from the main page icons which provide point and click access to the key functions. Use the standard Windows online help system for support.

Password Protection

Prohibit access to system features through an optional two-tier password. A system password limits the user to a view-only access to all forms while the manager password allows access to the entire package.

PC Backup and Restore

Quickly backup your PC software files and safely restore if necessary.

Automatically Poll Fuel Transactions

Collect fuel transactions from one or multiple CFN sites automatically every hour, up to four times per 24-hour period, or any time on demand. You can elect to poll every day or selected days of the week or month, or poll a single site continuously for transaction. Enter manual transactions and edit/delete polled transactions.

Transaction Export Options

Generate a flat ASCII file of fuel transaction polled from the site controller(s) or a transfer file* with additional PC/CFN file information added to the transaction for export to other applications.

Centralize Lockout Management

Centrally maintain the site controller lockout (authorization to fuel) file. Change the status individually or enter a range of number, and search the file to determine the current status. Copy lockout files from the PC to the sites or from a site to the PC.

Department, Vehicle And Employee Files*

Maintain files with descriptive data and YTD totals. Enhance your fuel reporting with descriptive information:

Department: Dept. #, description, address, discount %, YTD fuel and fluid usage and cost by product.

Vehicle: Vehicle #, license #, description, VIN, type, beginning and ending odometers, price, lockout status, specification and parts data, YTD fuel and fluid usage and cost.

Employee: Employee #, social security #, name, lockout status, YTD fuel and fluid usage and cost.

Tank Inventory Levels*

Automatically updates tank files with current inventory levels based on polled transactions. Includes site #, tank #, capacity, quantity, reorder level, product code, typed and description, and assigned pumps.

REPORTS

View of print the following reports:

Fuel Usage By Department*

Reports for employee or vehicle. Select a range or all departments and specify date and time range. Report includes quantity, unit, extended and discounted cost; by product, by employee or vehicle, and by department. Department totals, site totals, and grand totals are provided by product.

Fuel Usage By Employee*

Reports transaction detail or summary by department or employee. Select a range or all employees or departments and specify a date and time range. Report includes transaction detail, total number of transactions, quantity, and cost totals by product, by employee, and by department. Department and grand totals are provided by product.

Fuel Usage By Vehicle*

Reports transaction detail or summary by department, vehicle, or vehicle type by department. Select a range or all vehicles, departments, or types of vehicles and specify a date and time range. Report includes transaction detail, total number of transactions, quantity, and cost totals by product, miles driven average mpg, and cost per mile by vehicle or department. Department vehicle type and grand totals are provided by product.

Site Tank Fuel Usage*

Select site(s) and date and time range. Report includes quantity, unit, cost and extended cost by tank and site.

Site Product Fuel Usage*

Select site(s) and date and time range. Report includes quantity, unit, cost and extended cost by tank and site.

Fuel Efficiency*

Reports by department, vehicle, or vehicle type by department. Select single department or vehicle, a range of departments or vehicles, or all departments or vehicles. Specify date and time ranges for the report. Report includes miles, quantity, average mpg, cost/mile, and department totals.

Fuel Efficiency Exceptions*

Reports by department, vehicle, or vehicle type by department. Select single department or vehicle, a range of departments or vehicles, or all departments or vehicles.

Specify date and time ranges for the report. Report includes range, mpg, and exception low or high.

Unprocessed Fuel Transactions*

Select all data, or data by department, employee, or vehicle. Specify date and time range.

Processed Fuel Transactions*

Select all data, or data by department, employee, or vehicle. Specify date and time range.

Lockouts

Lists specified sites or master lockout file.

Fuel Sites*

Lists tank data for specified sites.

Departments*

Lists file date with grand totals.

Employees*

Lists file data with department and grand totals.

Vehicles*

Lists file data with department and grand totals.

Vehicle Specifications*

Provides vehicle file with descriptive data, specifications, and parts.

SPECIFICATIONS

System Requirements

Pentium E PC with a minimum of 16 MB RAM (32 MB recommended) and 60 MB hard drive space, plus a CFN II (V2.0 or higher) or CFN III at your site.

Ordering Information

PC/CFN is distributed on CD-ROM and can be purchased with a software license. Or, you can "test" a fully functional copy at no charge and purchase the software license later.

Part # Description

PCS030	Comm Module with License
099015	Comm Module Support Contract
PCS042	Fuel Module with License (includes Comm Module)
099004	Fuel Module Support Contract
PCS028	Comm Module to Fuel Module Upgrade
PCS031	DEMO Copy for Evaluation (later purchase PCS025 Comm Module software License and PCS026 Fuel Module Software License)

NOTE: PC CFN has Comm and Fuel Modules. The Fuel Module includes the Comm Module features. An asterisk () indicates features only available with the Fuel Module.

Windows® is a trademark of Microsoft Corporation. Pentium® is a trademark of Intel Corporation.

