

Legacy™ Electronic Series Specifications

Available Models and Weights

Model Number	Description	Weight
JH10	1-Grade, 1-Hose, Standard Flow Pump	
JH11	1-Grade, 2-Hose, Standard Flow Pump	
JH12	2-Grade, 2-Hose, Standard Flow Pump	460lbs./209kgs.
JH13	1-Grade, 1-Hose, High Flow Pump	
JH15	2-Grade, 2-Hose, High Flow Pump	
JHA0	1-Grade, 1-Hose, Standard Flow Dispenser	
JHA1	1-Grade, 2-Hose, Standard Flow Dispenser	
JHA2	2-Grade, 2-Hose, Standard Flow Dispenser	310lbs./141kgs.
JHA3	1-Grade, 1-Hose, High Flow Dispenser	
JHA4	1-Grade, 2-Hose, High Flow Dispenser	
JHA5	2-Grade, 2-Hose, High Flow Dispenser	

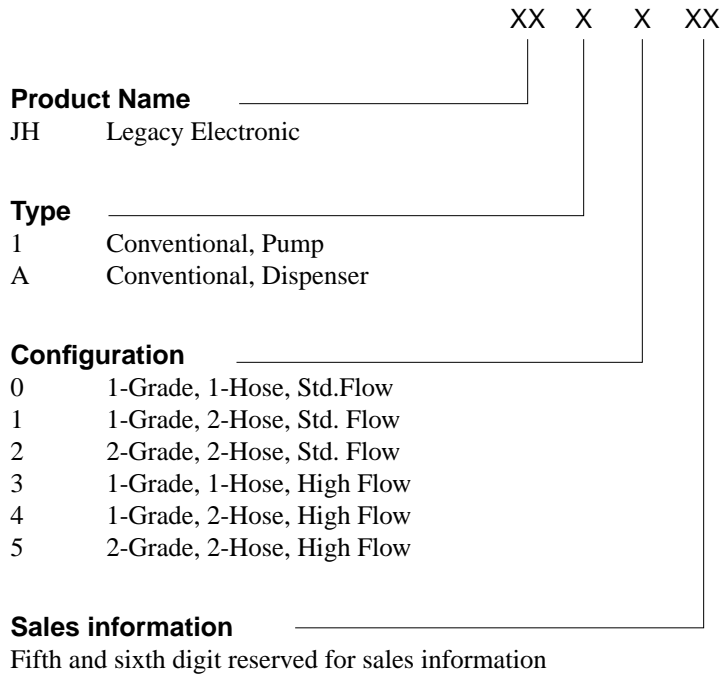
Load Table

Field Wiring Diagram (Attached)	Voltage Rating
FE-326	110/115/120VAC and 220/230/240VAC
FE-327	380VAC Three Phase

Operating Environment

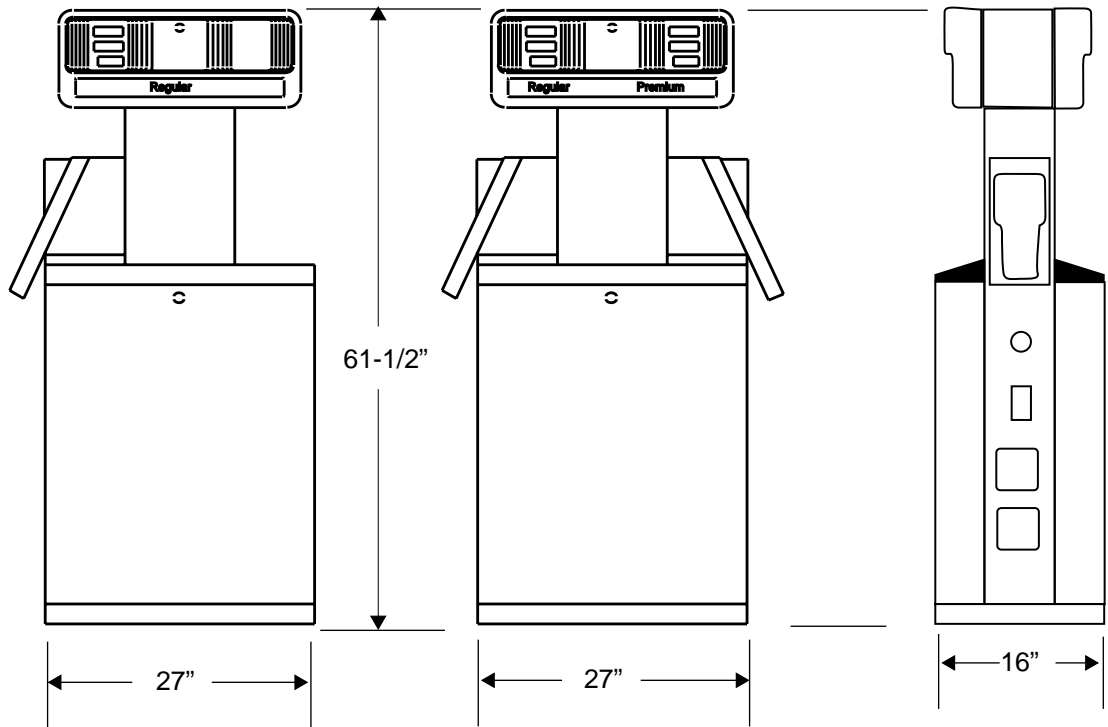
Environment	Range
Relative humidity	20% to 95% Non-condensing
Minimum outside ambient temperature	-22°F (-30°C)
Maximum outside ambient temperature	131°F (55°C)

Model Number Breakdown



Options	Order Entry Items
Electronic Programmable Pump Preset Electromechanical Totalizers Rotated Putdowns Hand Drive Spring Retriever Flexmast Mount Visible Discharge Indicator	Electronic Head Hydraulic Bezels Filter Scuffs Hoses & Hose Clamps Breakaways Nozzles Decals Brands

Legacy Electronic - Elevation



Legacy Electronic Pump and Dispenser - Foundation Diagrams (Models JH10, JH11, JH12, JH13, JH15, JHA0, JHA1, JHA2, JHA3, JHA4, JHA5)

PRODUCT INLET LOCATIONS

PUMPS

A	INLET FROM TANK
B	NOT USED
C	NOT USED
D	NOT USED
POSITION	FUNCTION

1-GRADE, 1-HOSE - JC10, JC13, JH10, JH13, JM10, JM13

A	INLET FROM TANK
B	NOT USED
C	NOT USED
D	NOT USED
POSITION	FUNCTION

1-GRADE, 2-HOSE - JC11, JH11, JM11

A	INLET FROM TANK
B	INLET FROM TANK
C	NOT USED
D	NOT USED
POSITION	FUNCTION

2-GRADE, 2-HOSE - JC12, JC15, JH12, JH15, JM12, JM15

DISPENSERS

A	NOT USED
B	NOT USED
C	INLET FROM TANK
D	NOT USED
POSITION	FUNCTION

1-GRADE, 1-HOSE - JCA0, JCA3, JHA0, JHA3, JMA0, JMA3

A	NOT USED
B	NOT USED
C	INLET FROM TANK
D	NOT USED
POSITION	FUNCTION

1-GRADE, 2-HOSE - JCA1, JCA4, JHA1, JHA4, JMA1, JMA4

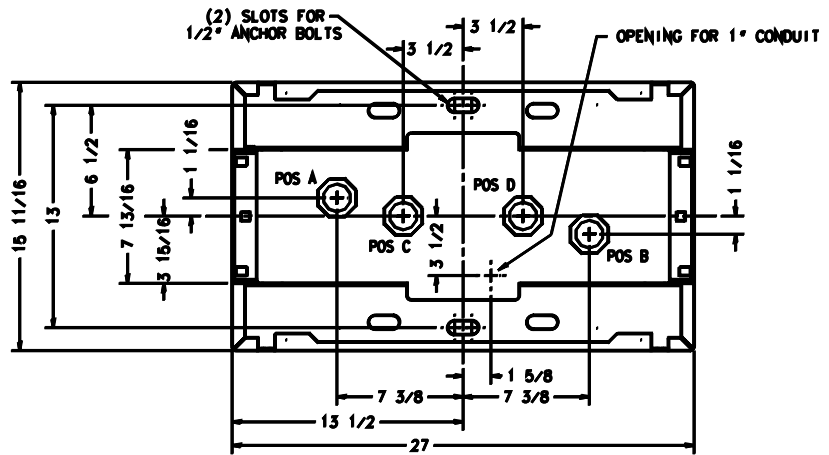
A	NOT USED
B	NOT USED
C	INLET FROM TANK
D	INLET FROM TANK
POSITION	FUNCTION

2-GRADE, 2-HOSE - JCA2, JCA5, JHA2, JHA5, JMA2, JMA5

NOTES:

- 1 FOR A DOUBLE-POPPET SHEAR VALVE MAKE INLET UNION HEIGHT AT 2-7/16" (+0, -1/4).
- 2 WHEN USING A DOUBLE-POPPET SHEAR VALVE USE INLET TUBE KIT K94294 (1G1H OR 2G2H) OR K94295 (1G2H), WHICH WILL POSITION THE UNION AT 2-7/16" INSTEAD OF 1-9/16".

TOP VIEW



FRONT VIEW

