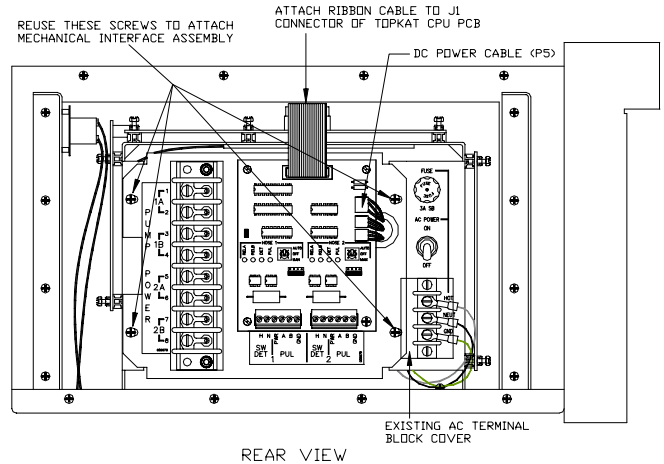


## FIELD INSTALLATION OF A TOPKAT (SERIES 900) MECHANICAL INTERFACE KIT

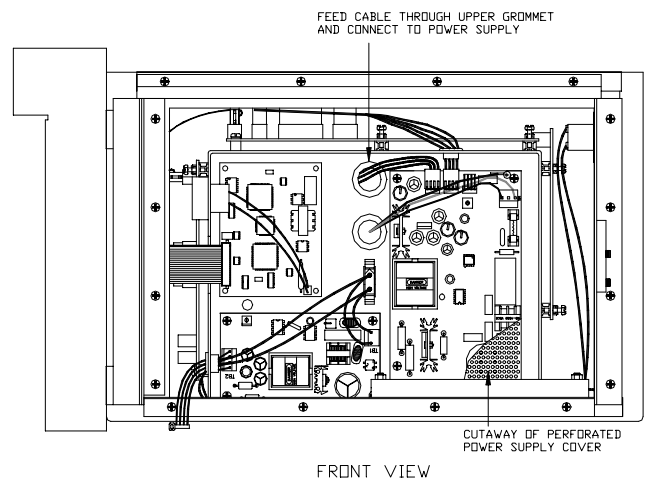
The TopKAT (Series 900) Mechanical Interface Kit (C07356) should contain the following parts:

Item	Qty.	P/N	Description
1	1	C07050	Mechanical Interface Assembly
2	1	C36089	Field Installation instructions
3	1	C35754	TopKAT Installation Manual

1. Backup or poll all current TopKAT data before beginning.
2. When complete, switch off the breaker that supplies AC power to the TopKAT. Unlock and open the front and rear doors of the TopKAT. Switch off the AC power switch located to the right when viewed from the rear of the head.
3. Remove the hood of the unit from the head. This is done by removing two large Phillips-head screws located at the lower left and lower right looking from the rear of unit.
4. Remove the rear blank cover (with the Danger label) by removing the four Phillips-head screws that secure it. Be sure to save the screws to later mount the Mechanical Interface Assembly. Also remove and discard the existing clear plastic AC terminal block cover.
5. From the front of the unit, remove the perforated power supply cover, by removing the three Phillips-head screws that secure it in place.
6. Examine the C07050 Mechanical Interface Assembly and locate the DC Power Cable Assembly that is connected to P5 of the Series 900 Pump Control PCB. Follow the cable to find the other end (which will be unconnected).



7. Look into the rear of the TopKAT, and locate the two black plastic grommets in the upper center of the vertical barrier plate.
8. Feed the loose end of the DC Power Cable through the upper grommet while sliding the Mechanical Interface Assembly into place. Re-use the four Phillips-head screws removed earlier to secure the assembly.
9. Attach the loose end of the ribbon cable assembly coming from P6 of the Series 900 Pump Control PCB to the J1 connector of the Series 900 CPU PCB.
10. Set SW1 switch 2 to the closed (down) position on the Series 900 CPU PCB.



11. Move to the front of the TopKAT and locate the DC Power Cable that was fed through the grommet. Attach it to any one of the open connectors along the top edge of the power supply.
12. Replace the power supply cover and secure it with the three screws removed previously.
13. Refer to the TopKAT *Installation Manual* for detailed pump/dispenser wiring connection information and proper jumper selection of the TopKAT Mechanical Pump Control PCB. Improper selection may cause the +12 volt fuse (F2) to blow.
14. After all wiring is complete, install the clear protective AC terminal block cover. It should cover the Pump Power terminal block as well as the AC power input terminal block.
15. Replace the hood and secure it with the two screws removed previously.
16. Switch on the breaker to provide AC power to the TopKAT. Switch on the AC power to the TopKAT. Follow the *Manual Override Test* in the TopKAT *Installation Manual* to verify pump/dispenser wiring.
17. Close and lock the front and back doors when all testing is complete. Check the data in the TopKAT. All pump data must be reloaded to accommodate the change to mechanical pumps. Refer to your Operation Manual if necessary.