



Document Number	DCV-00541
Date Released	May. 2023
Revision Number/Security level	R04 S2

Retrofit G7 Printer Wayne Helix (US & Canada) Installation Guide

# Retrofit G7 Printer Wayne Helix (US & Canada) Installation Guide

<b>Kit Part Numbers</b>	<b>Brief Description</b>
RF00025-XX	G7 Printer Wayne Helix Kit



Document Number	DCV-00541
Date Released	May. 2023
Revision Number/Security level	R04 S2

Retrofit G7 Printer Wayne Helix (US & Canada) Installation Guide

## Release History

Version	Prepared by	Date	Change description
0	Jojie Adigue	20/7/2020	Initial Release
1	Michael Doh	10-Aug-2020	Review and updates for initial release
2	Michael Doh	14-Aug-2020	Corrections to part numbers
3	Shibani Joshi	14-April-2023	Added RF00075-XX (Wayne Helix Headless G7 15inch kit)
4	Shibani Joshi	01-May-2023	UL Comments Addressed

© 2023 by Invenco Group Limited

All rights reserved

No part of this document may be copied or reproduced in any form without prior written consent from Invenco. Invenco has taken great effort to verify the accuracy of this document but assumes no responsibility for any technical inaccuracies or typographical errors



Document Number	DCV-00541
Date Released	May. 2023
Revision Number/Security level	R04 S2

## Retrofit G7 Printer Wayne Helix (US & Canada) Installation Guide

### Contents

Release History.....	2
1 Introduction.....	4
1.1 Tools Required .....	4
1.2 Installation Kit Contents .....	5
2 Safety & Compliance Information.....	6
2.1 Preliminary Precautions .....	6
2.2 Emergency Total Electrical Shut-Off .....	6
2.3 Total Electrical Shut-Off Before Access .....	6
2.4 Evacuation, Barricading and Shut-Off .....	6
2.5 Read the Manual .....	6
2.6 Follow the Regulations.....	7
2.7 Replacement Parts .....	7
3 Safety Symbols and Terminology.....	7
3.1 Prevent Explosions and Fires .....	7
3.1.1 No Open Flames.....	8
3.1.2 No Sparks - No Smoking .....	8
3.1.3 Working Alone .....	8
3.1.4 Working with Electricity Safety .....	8
3.1.5 Hazardous Materials.....	8
3.1.6 In an Emergency.....	8
3.1.7 Approvals.....	9
3.2 Computer Programs and Documentation .....	9
4 Installation Guide .....	10
5 Wiring Completion.....	13

## Retrofit G7 Printer Wayne Helix (US & Canada) Installation Guide

### 1 Introduction

The documentation provides some basic guidelines for installing the G7 printer into the Wayne Helix dispenser.

This Retro-Fit Kit:

- can only be installed in combination with any of these UL Listed by Report Retro Fit Kits:
  - RF00014-XX (Wayne Helix Standard G7 kit)
  - RF00063-XX (Wayne Helix Standard G7 15 inch kit)
  - RF00075-XX (Wayne Helix Headless G7 15inch kit)
- can be installed into either Side A or Side B the dispenser.
- is for a single Side. For a double-sided installation, two of these Kits are required.

**IMPORTANT NOTE: The installer must review the entire installation guide prior to starting any work on the dispenser. If the construction of the dispenser in the installation guide does not match the construction of the dispenser being retrofitted, then do not proceed with the installation and contact customer service.**

#### 1.1 Tools Required

The following tools are required to install the printer onto the Helix Optic 12 Panel.

- T7 Torex Key
- 3mm Allen Key
- Philipps head screw driver
- Helix dispenser key
- Rubber mallet



**WARNING**

**Do NOT** use power tools if working on a fuel station forecourt.

Any spark could cause an explosion.



Document Number	DCV-00541
Date Released	May. 2023
Revision Number/Security level	R04 S2

## Retrofit G7 Printer Wayne Helix (US & Canada) Installation Guide

### 1.2 Installation Kit Contents

#### **G7 Printer Wayne Helix kit (RF00025-XX):**

Unpack the G7 Printer Wayne Helix Retro-Fit Kit (RF00025-XX) and check that all of the parts listed below are present.

<b>Retrofit Kit Contents</b>		
<b>Part Number</b>	<b>Description</b>	<b>Quantity</b>
EZ0649	Printer Assembly	1
MS0245 (006-8611475)	Printer attaching screw	2

## Retrofit G7 Printer Wayne Helix (US & Canada) Installation Guide

## 2 Safety & Compliance Information

This section introduces the hazards and safety precautions associated with installing, inspecting, maintaining or servicing the G7 Printer. Before proceeding, check the relevant hazard and safety information. Fire, explosion or electrical shock could occur and cause death or serious injury if these safe service procedures are not followed.

### 2.1 Preliminary Precautions

You are working in a potentially dangerous environment of flammable fuels, vapour, and high voltage. Only trained or authorized individuals knowledgeable in the related procedures should install, inspect, maintain or service this equipment.

### 2.2 Emergency Total Electrical Shut-Off

Locate the forecourt emergency fuel shut-off valves and electrical isolation breakers. Understand how to use these, should they be required. Locate the switch or circuit breakers that shut-off all power to all fueling equipment and dispensing devices.

### 2.3 Total Electrical Shut-Off Before Access

Any procedure requiring access to electrical components or the electronics of a pump/dispenser requires total electrical shut-off of that unit. Understand the function and location of this switch or circuit breaker before inspecting, installing, maintaining, or servicing the Invenco OPT


### 2.4 Evacuation, Barricading and Shut-Off

Any procedures requiring accessing a pump/dispenser head requires the following three actions:

- An evacuation of all unauthorized persons and vehicles
- Using safety tape or cones as barricades to the effected units
- A total electrical shut-off of the affected unit(s)

### 2.5 Read the Manual

Read, understand and follow this manual and any other labels or related materials supplied with the equipment. If you do not understand a procedure, call an Invenco Authorized Service Centre or Invenco Service Officer. It is imperative to your safety and the safety of others to understand the procedures before beginning work.

	Document Number	DCV-00541
	Date Released	May. 2023
	Revision Number/Security level	R04 S2
<b>Retrofit G7 Printer Wayne Helix (US &amp; Canada) Installation Guide</b>		

## 2.6 Follow the Regulations

Regulations in OSHR (Occupational Safety and Health Regulations), national, state and local codes, including customer requirements must be followed. Failure to install, inspect, maintain or service this equipment in accordance with these codes, regulations and standards may lead to legal citations with penalties and may affect the safe use and operation of the equipment.

## 2.7 Replacement Parts

Use only genuine Invenco replacement parts and retrofit kits on your installation. Using parts other than genuine Invenco replacement parts could create a safety hazard and violate local regulations.

# 3 Safety Symbols and Terminology



This safety alert symbol is used in this manual and on warning labels to alert you to a precaution which must be followed to prevent potential personal safety hazard. Obey safety directives that follow this symbol to avoid possible injury or death.

### Signal Words

These signal words used in this manual and on warning labels tell you the seriousness of particular safety hazards. The precautions below must be followed to prevent death, injury or damage to the equipment:



**DANGER:** Alerts you to a hazard or unsafe practice which will result in death or serious injury.



**WARNING:** Alerts you to a hazard or unsafe practice that could result in death or serious injury.



**CAUTION:** Designates a hazard or unsafe practice which may result in minor injury, property or equipment damage.

## Working with Fuels and Electrical Energy

### 3.1 Prevent Explosions and Fires

Fuels and their vapors may explode or burn if ignited. Spilled or leaking fuels cause vapors. Even filling customer tanks will cause potentially explosive vapors in the vicinity of dispenser or island.

## Retrofit G7 Printer Wayne Helix (US & Canada) Installation Guide

### 3.1.1 No Open Flames



Open flames from matches, lighters, welding torches or other sources can ignite fuels and their vapors.

### 3.1.2 No Sparks - No Smoking



Sparks from starting vehicles, starting or using power tools, burning cigarettes, cigars or pipes can also ignite fuels and their vapor. Static electricity, including an electrostatic charge on your body, can cause a spark sufficient to ignite fuels and their vapors. After getting out of a vehicle, touch the metal of your vehicle to discharge any electrostatic charge before you approach the dispenser island.

### 3.1.3 Working Alone

It is highly recommended that someone who is capable of rendering first aid be present during servicing. Be familiar with Cardiopulmonary Resuscitation (CPR) methods if you are working with or around high voltages. This information is available from the First Aid training providers. Always advise the station personnel about where you will be working and caution them not to activate power while you are working on the equipment. Use the OSHA Tag-out/Lockout procedures. If you are not familiar with this requirement, refer to information in the relevant manual and OSHA documentation.

### 3.1.4 Working with Electricity Safety

Ensure that you use safe and established practices in working with electrical devices. Poorly wired devices may cause a fire, explosion or electrical shock. Ensure that grounding connections are properly made. Take care that sealing devices and compounds are in place. Ensure that you do not pinch wires when replacing covers. Follow OSHA Tag-out/Lockout requirements. Station employees and service contractors need to understand and comply with this program completely to ensure safety while equipment is down.

For USA: Follow all applicable requirements in NFPA 30, 30A and 70, and those of the Local Authority Having Jurisdiction for electrical wiring.

For Canada: Follow all applicable requirements in Canadian Electrical Code (CE Code), CSA C22.1.

### 3.1.5 Hazardous Materials


Some materials present inside electronic enclosures may present a health hazard if not handled correctly. Be sure to clean hands after handling equipment. Do not place any equipment in mouth.

### 3.1.6 In an Emergency

Compile the following information in case of emergency:

- Location of accident (e.g. address, front/back of building, etc.)
- Nature of accident (e.g. possible heart attack, struck by a vehicle, burns, etc.)
- Age of victim (e.g. baby, teenager, middle-age, elderly).



	Document Number	DCV-00541
	Date Released	May. 2023
	Revision Number/Security level	R04 S2
<b>Retrofit G7 Printer Wayne Helix (US &amp; Canada) Installation Guide</b>		

- Whether or not victim has received first aid (e.g. stopped bleeding by application of pressure etc.)
- Whether or not victim has vomited (e.g. if swallowed or inhaled something etc.)

IMPORTANT: Oxygen may be needed at scene if gasoline has been ingested or inhaled. Seek medical advice immediately.

### 3.1.7 Approvals

Invenco develops and maintains its hardware and software products using industry-standard quality processes and is audited by various bodies.

The Invenco G7 Printer Wayne Helix Retro-Fit Kit has UL File Reference of MH61528.

## 3.2 Computer Programs and Documentation

All Invenco Group Ltd. computer programs (including software on discs and within memory chips) and documentation are copyrighted by, and shall remain the property of, Invenco Group Ltd. Such computer programs and documents may also contain trade secret information. The duplication, disclosure, modification, or unauthorized use of computer programs or documentation is strictly prohibited, unless otherwise licensed by Invenco Group Ltd.

## Retrofit G7 Printer Wayne Helix (US & Canada) Installation Guide

### 4 Installation Guide

1. Please ensure all safety procedures are followed per requirement by the customer before installing the retrofit kit.
2. Remove power to Pump and follow the OSHA Lock-out/Tag-out procedures.
3. This installation will require various panel replacements. The panels will be removed from the door and replaced with pre-built panels with the OPT modules pre-fitted.



## WARNING

Failure to turn off the unit during installation of the kit may cause injury or bodily harm from electrical shock. Ensure that all power to the unit is switched off before opening the door of the unit and during kit installation.

Prepare and install the Printer Wayne Helix as per below:

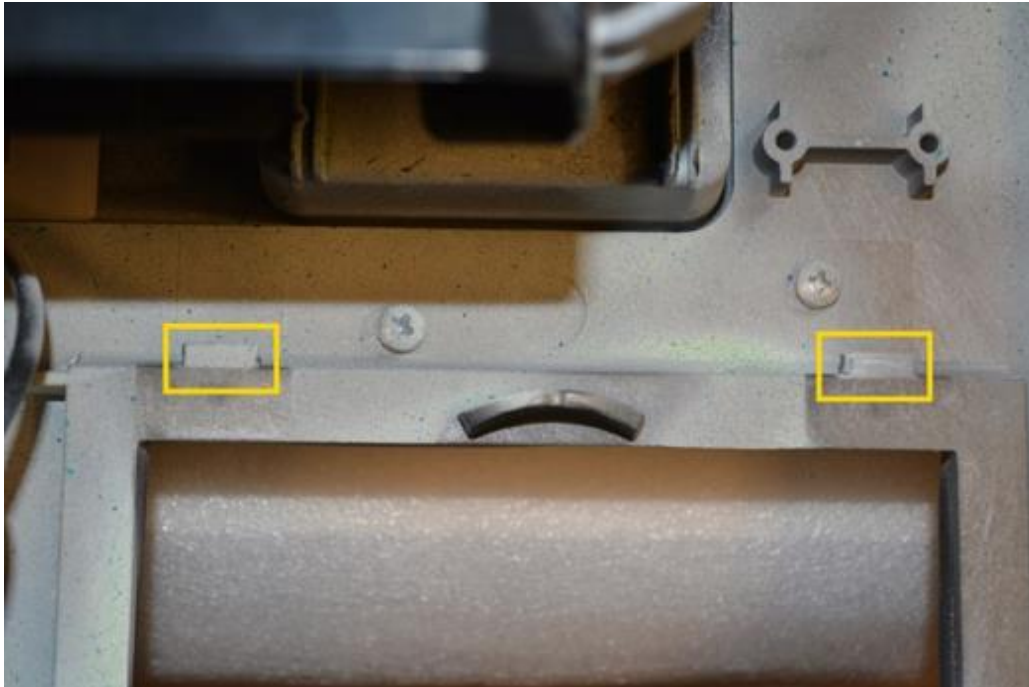
1. Open the Printer Door using the provided printer door key



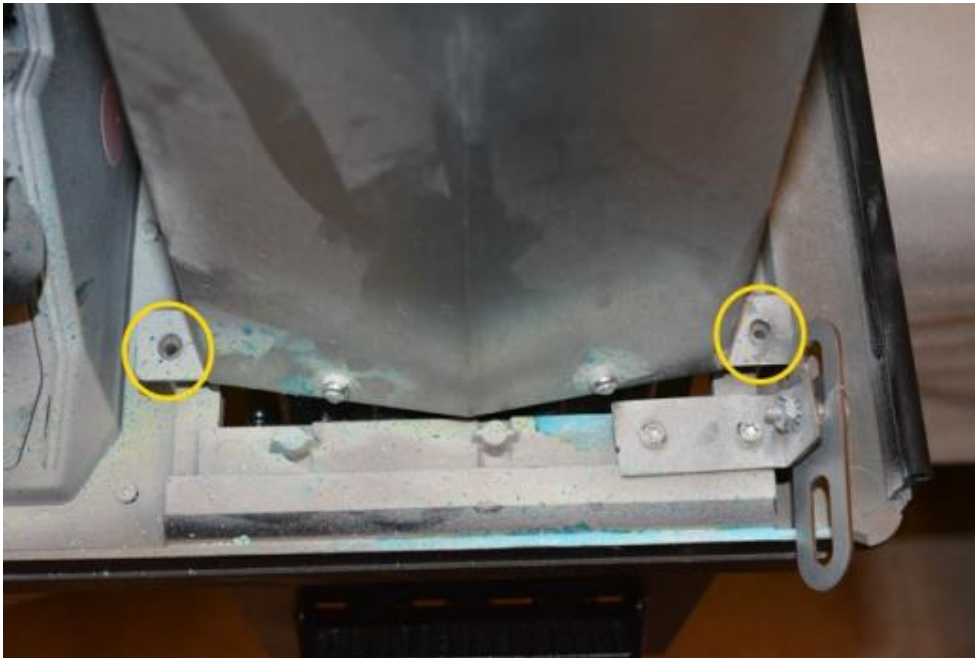
2. Acquire the Helix printer assembly EZ0649.

**Retrofit G7 Printer Wayne Helix (US & Canada) Installation Guide**

3. Place the printer into the back of the printer door opening. Use care that it does not fall into the opening in the dispenser panel once the door is opened and damage the printer assembly. Hold the printer back on its rails while installing to the dispenser.
  - a. Engage the top hooks of the printer assembly to the notches above the printer door.



- b. Install the provided screws MS0245 (006-8611475) in the lower section of the printer assembly and attach to the Helix G7 or G7 15 inch panel.

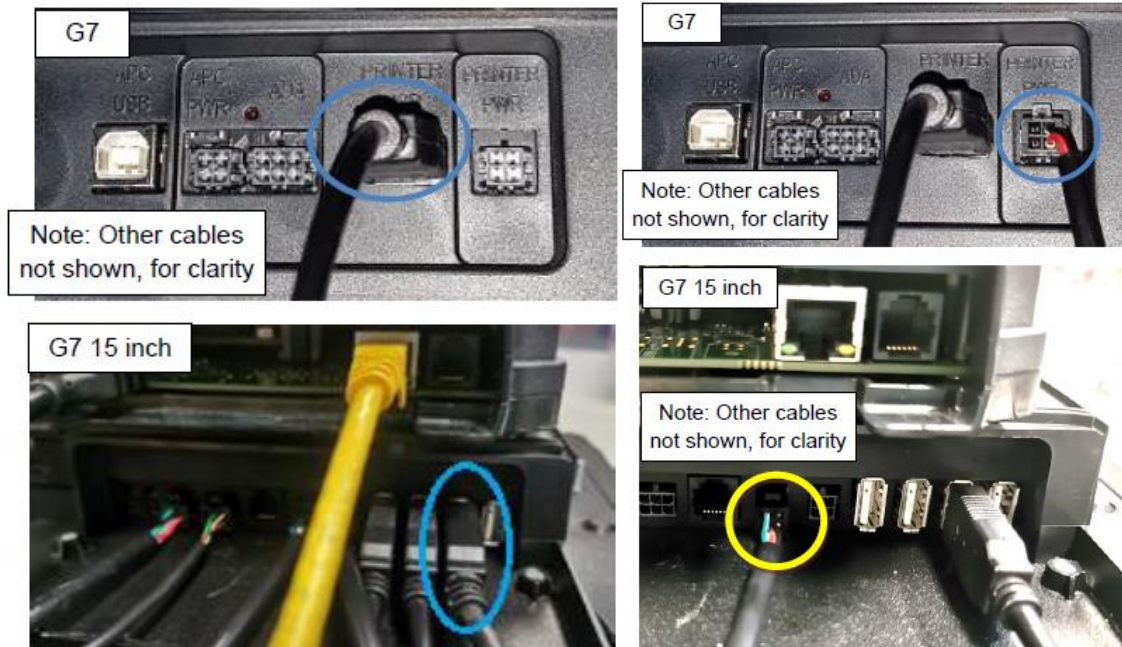
**Retrofit G7 Printer Wayne Helix (US & Canada) Installation Guide**

4. Push the printer back into the assembly if out. Close and lock the printer door.



**Retrofit G7 Printer Wayne Helix (US & Canada) Installation Guide**

5. Plug in the Printer Power Cable EK0117 and Printer USB Cable EK0157 (both cables preinstalled on the printer assembly) to the G7 or G7 15 inch SDC.



6. Attach the grounding wire EK0214 (preinstalled on the printer assembly) to the dispenser when directed in the Helix Installation Guide (DCV-00540 and DCV-00560).
7. Continue to the next installation step in the Helix Installation Guide (DCV-00540 and DCV-00560) UL Listed by Report Retrofit Kit RF00014-XX, RF00063-XX or RF00075-XX.

## 5 Wiring Completion

Ensure that all cables are tidy and cannot become snagged or pinched when the door of the cabinet is opened and closed.

**WARNING** – Local regulations may also require that the installation is electrically tested and certified **BEFORE** switch-on.