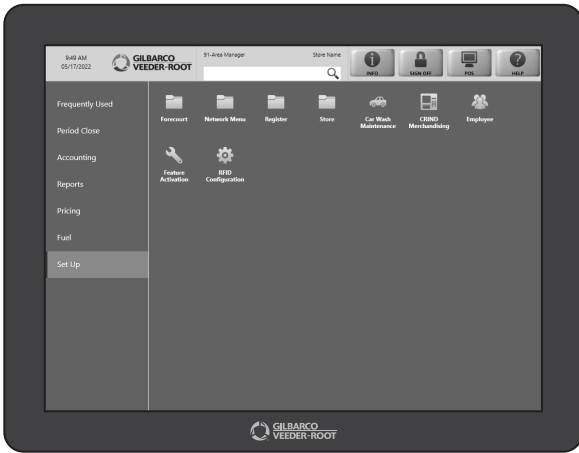


*Speed is the key to convenience and here's another way Passport® lets you press fast-forward.*

### ENABLING THE DEFAULT BUTTON FOR RESTRICTED ITEMS.



#### FROM THE MANAGER WORKSTATION:

1. Select "Set Up"



2. Select "Store"



3. Select "Restriction Maintenance"

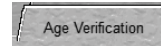


4. Select the restriction you wish to change.

5. Select the "Change" button.



6. Select the Age Verification tab.



7. Select "Allow Default button to be used for sale of age restricted items"

Allow Default button to be used for sale of age restricted items

8. Select "Save"

**AND THERE YOU GO – NO MORE CHECKING GRANDMA'S ID...  
LETTING YOUR CASHIERS MOVE CUSTOMERS THROUGH THE LINE FASTER THAN EVER!**

