
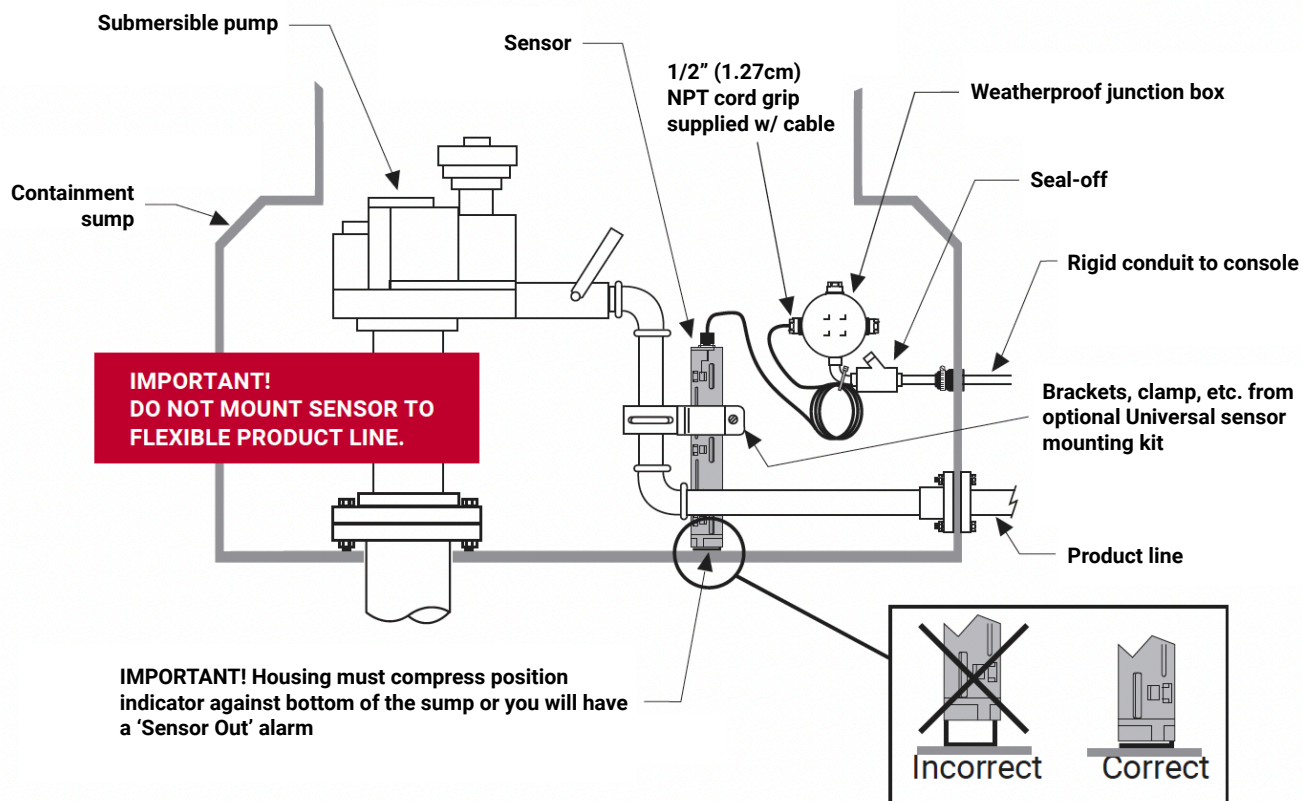


Sensor Description	Position Sensitive Sensor		This sensor is installed in a containment sump or dispenser pan and will detect the presence of liquid in the sump.				
Part Number	0794380-323						
Category	<input type="checkbox"/> Discriminating <input checked="" type="checkbox"/> Non-Discriminating <input checked="" type="checkbox"/> Position Sensitive		<input type="checkbox"/> Level Sensing <input type="checkbox"/> Static Testing <input type="checkbox"/> Hydrostatic				
Fuel Compatibility	<input checked="" type="checkbox"/> Gas <input checked="" type="checkbox"/> Diesel <input checked="" type="checkbox"/> Kerosene <input checked="" type="checkbox"/> Jet Fuel <input checked="" type="checkbox"/> Aviation Gas		<input checked="" type="checkbox"/> E-15 <input checked="" type="checkbox"/> E-85 ¹ <input checked="" type="checkbox"/> E-100 <input checked="" type="checkbox"/> Bio-Diesel 20 <input type="checkbox"/> Bio-Diesel 100				<input checked="" type="checkbox"/> Green Diesel <input type="checkbox"/> DEF <input checked="" type="checkbox"/> Waste Oil <input checked="" type="checkbox"/> Motor Oil
Console Compatibility	Recommended Min. Console Software	Sensor Interface Modules					
		Module Part #	Module Description	# of Modules per Console	# of Sensor Inputs per Module	Availability	
TLS-450PLUS (8600 Series)	6.A or Higher	0332812-001	Universal Sensor Module (USM)	Up to 4 – TLS-4xx Up to 8 – TLS-4xx w/ opt. TLS-XB	16	Sold Separately	
TLS-450	4.A or Higher						
TLS4 (8601 Series)	6.A or Higher	0330020-750	Universal Sensor Input/Output Module (USIOM-AC)	1	12	Included	
TLS4i (8601 Series)					6		
TLS4B (8601 Series)		0330020-751			8		Sold Separately
TLS4c (8601 Series)					4		
TLS-350/R/PLUS	124/324 or Higher	0329358-001	Interstitial Sensor Interface Module	Up to 8	8	Sold Separately	
TLS-350J		0329356-003	4 Probe / 4 Sensor Interface Module	1	4	Sold Separately	
TLS-300i		0330230-001	4 Probe / 8 Sensor Interface Module		8	Included	
Alarm Notification	Normal	Sensor in Normal State – No liquid detected					
	Sensor Out	Sensor not resting on bottom of containment or sensor not communicating to ATG/Console					
	Fuel Alarm	Liquid detected in containment area at approx. 1.5" (3.81cm)					
Installation Kit	0330020-012	Universal Sensor Mounting Kit (Sold Separately)					
Specifications							
Operating Principle	Product Permeable, Reed Switch / Float						
Product Activation Height	Liquid – Approx. 1.5" (3.81cm)						
Operating Temperature	+32°F to +140°F (0°C to +60°C)						
Dimensions	12" (30.5cm) high, 2.2" (5.6cm) diameter						
Miscellaneous/Notes	Standard Cable Length: 12' (3.66m)						
Third Party Evaluation Links	TLS-3XX/TLS-450 Series Consoles TLS4 (8601Series) Consoles						
Product Link	Position Sensitive Sensor						
Warranty with System	1 Year Parts & Labor						
Warranty (When purchased separately)	1 Year Parts Only						

Where Used (Typical)

- | | |
|---|---|
| <input checked="" type="checkbox"/> Dispenser Pan | <input type="checkbox"/> Annular Space |
| <input checked="" type="checkbox"/> Spill Containment | <input type="checkbox"/> Monitoring Well |
| <input checked="" type="checkbox"/> STP Sump | <input type="checkbox"/> Oil/Water Separator Tank |
| <input type="checkbox"/> Convault Tank | |

Example Installation


Notice

Veeder-Root makes no warranty of any kind with regard to this publication, including, but not limited to, the implied warranties of merchantability and fitness for a particular purpose.

Veeder-Root shall not be liable for errors contained herein or for incidental or consequential damages in connection with the furnishing, performance, or use of this publication.

Veeder-Root reserves the right to change system options or features, or the information contained in this publication.

This publication contains proprietary information which is protected by copyright. All rights reserved. No part of this publication may be photocopied, reproduced, or translated to another language without the prior written consent of Veeder-Root.

Example Illustrations

Illustrations used in this guide for example sensor installations may contain components that are customer supplied and not included with the sensor. Please check with your Veeder-Root Distributor for recommended installation accessories.

Third Party Evaluations

Third party evaluations of the Veeder-Root sensors contained in this application guide can be found under the Veeder-Root vendor name on the National Work Group on Leak Detection Evaluations (NWGLDE) website: <http://www.nwglde.org>